



WORLD'S BEST  
ALLOY BULLBARS

East Coast Bullbars (ECB Pty Ltd)

Tel: 07 3897 5700

Fax: 07 3283 1168

ecb@ecb.com.au www.ecb.com.au

29 Snook St  
Clontarf QLD 4019  
Australia

Po Box 122  
Margate QLD 4019  
Australia

NBV02SY

REPLACES: 25.03.09  
REVISED: 11.07.10

## FITTING INSTRUCTIONS

### VOLKSWAGON TRANSPORTER 07/07on 76MM NUDGE BAR VEHICLE FRONTAL PROTECTION SYSTEM (VFPS) FOR AIR BAG & ADR COMPLIANT VEHICLES

Check installation hardware before commencing.

Special Tools: T25 and T30 Torx bit and associated driver  
Air or electrically driven ratchet and associated drivers.

1. Open bonnet.
2. Remove bumper side panels and bumper grille from bumper using a small flat blade screwdriver. Slide screwdriver between top of side panel and bumper to release clips. Repeat for bottom of side panel and bumper. Gently pull from centre to assist in removal. **See figure 1.**
3. Remove plastic screws from grille, drivers side headlight cover and battery cover. Remove headlight cover and battery cover only. Grille is removed with bumper. Disconnect passengers side headlight. Feed wiring back into bumper cavity. Wiring harness is removed with bumper,
4. Remove one 10mm bolt from power steering bottle. Unclip from lower mount and allow to hang.
5. Remove one PK screw from windscreen washer bottle. Allow to hang.
6. From behind rear of radiator support, remove four T25 Torx head screws. Screws on passengers side are recessed into rear of radiator support. **See figure 2.**
7. Remove five 13mm head bolts from centre under body guard. Unclip from plastic guard hanger and remove. From rear of bumper remove three T30 Torx head bolts.
8. De assemble front of inner guard removing three T25 Torx head screws from underside, two T25 Torx head screws from front of wheel arch (per side). Peel back inner guard to access rear flat edge of plastic bumper.
9. Remove two 10mm head bolts from inside of guard on rear flat edge of plastic bumper (per side) and one T25 head screw from rear corner of plastic bumper wing. On drivers side of vehicle, disconnect wiring harness hanging under horn. **See figure 3.** Wiring harness is removed with bumper.
10. Where bumper side panels are removed, remove two T30 Torx head screws (per side). Carefully remove bumper cover. **See figure 4.**
11. Remove bumper cover support. Five 13mm head bolts (per side).
12. Fit ECB Steel chassis support brackets to front of chassis ends using two M8 x 1.25 x 25mm bolts, spring washers and flat washers from underside, flat washers and nuts (supplied) on inside of chassis rails. **See figure 5. Finger tighten only. Warning: Plates must be fitted to support front of chassis rail. If not fitted, damage to vehicle may occur. Caution: Bolts, spring washers and flat washers must be to underside of chassis rail.**



**WORLD'S BEST  
ALLOY BULLBARS**

**East Coast Bullbars (ECB Pty Ltd)**

Tel: 07 3897 5700

Fax: 07 3283 1168

ecb@ecb.com.au www.ecb.com.au

29 Snook St  
Clontarf QLD 4019  
Australia

Po Box 122  
Margate QLD 4019  
Australia

13. Install ECB chassis mount to front of chassis rail using four M8 x 40 x 1.25 bolts, spring washers and 3/8 flat washers for front of mount and one M8 x 35 x 1.25, spring washers and 3/8 flat washers for top radiator support mount (per side) (supplied) . Centre to vehicle and **tighten all bolts. See figure 6.**
14. Fit M8 nuts, spring washers and flat washers (supplied) to rear of chassis mount bolts. Ensure bolt is through Chassis support bracket. Hold front of bolt to tighten nut, spring washer and flat washer to rear. **Tighten all bolts. See figure 7.**
15. Remove fog light trim from plastic bumper cover. Trim inner section from bumper cover. **See figure 8.**
16. Refit bumper cover to vehicle as per reverse of steps 2 to 10. Ensure ECB wiring harness hangs through front of bumper cover.
17. Measure from inner fog light trim opening to ECB steel chassis mount. Transfer measurements to plastic fog light trim and allow 15mm opening in trim for chassis mount to protrude. Cut trim to suit. Refit trim to bumper cover. **See figure 9.**
18. Attach ECB protection bar to inside of steel chassis mount using two 1/2 x 1 1/2 bolts, flat washers, spring washers and nuts (per side) (supplied). For ease of fitment, place bolt heads to outside of mount. **Finger tighten only.**
19. Align ECB protection bar to vehicle. **Tighten all bolts. See figure 10 and 11.**

**ENSURE NUMBER PLATE IS CLEARLY VISABLE**

**Note:** When fitting/refitting the licence plate to the vehicle, ensure there is no obstruction to licence plate vision in accordance with local authorities. If required relocate licence plate to an alternate location.

**Further VFPS Notes:**

- a) Do not attach VFPS to the vehicle using anchorages not intended for this purpose (e.g. engine mounting bolts).
- b) Do not use this product for any vehicle make or model, other than those specified by the VFPS manufacturer.
- c) Do not remove the plaque or label from the VFPS.
- d) Do not modify the structure of the VFPS in any way.
- e) No accessory or fitment should project forward of the VFPS forward profile.
- f) **ENSURE THESE INSTRUCTIONS ARE LEFT WITH VEHICLE OWNER AND/OR OPERATOR.**

**IMPORTANT INFORMATION**

Periodically check bolts and nuts for correct tightness, especially if travelling on rough roads

**FITTING KIT**

1 – ECB steel chassis mount	12 – M8 nuts
2 – ECB steel chassis support brackets	10 – 3/8 flat washers
4 – M8 x 1.25 x 25 bolts	4 – 1/2 x 1 1/2 bolts
2 – M8 x 1.25 x 30 bolts	8 – 1/2 flat washers
8 – M8 x 1.25 x 40 bolts	4 – 1/2 spring washers
8 – M8 flat washers	4 – 1/2 nuts
22 – M8 spring washers	



**WORLD'S BEST  
ALLOY BULLBARS**

**East Coast Bullbars (ECB Pty Ltd)**

Tel: 07 3897 5700

Fax: 07 3283 1168

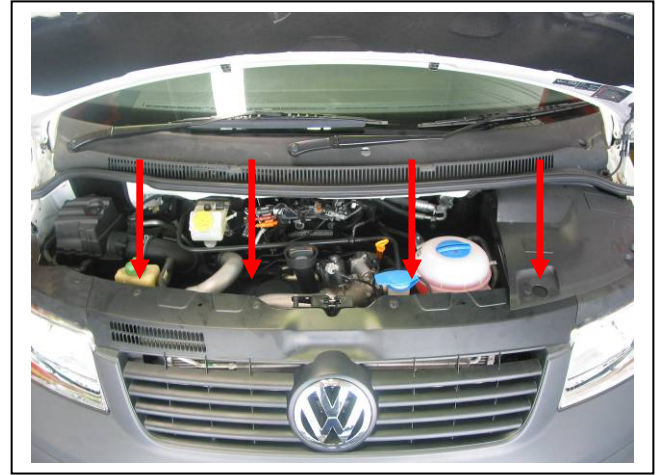
ecb@ecb.com.au www.ecb.com.au

29 Snook St  
Clontarf QLD 4019  
Australia

Po Box 122  
Margate QLD 4019  
Australia



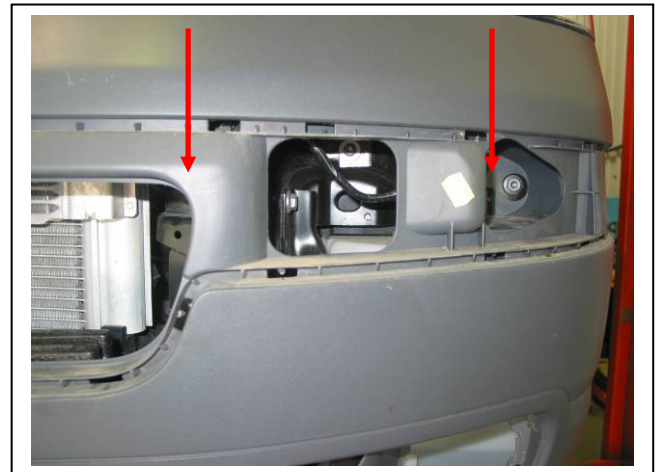
**Figure 1:** Bumper side panel holding clips.  
Passengers side shown.



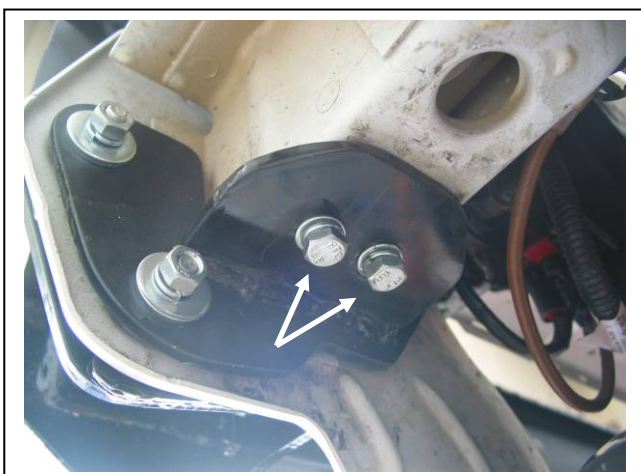
**Figure 2:** Placement of upper bumper screws  
behind radiator support.



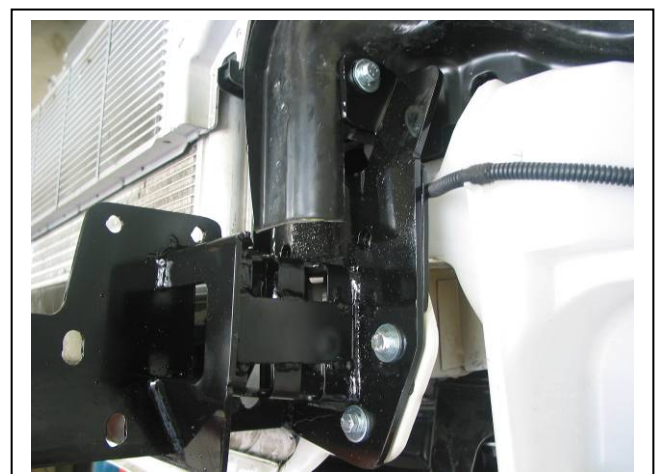
**Figure 3:** Wiring harness to be disconnected.  
Harness is removed with plastic bumper.



**Figure 4:** Remove two T25 Torx screws.



**Figure 5:** Chassis support attached to front of  
chassis. Passengers side shown.



**Figure 6:** Chassis mount attached to vehicle.  
Passengers side shown.





East Coast Bullbars (ECB Pty Ltd)

Tel: 07 3897 5700

Fax: 07 3283 1168

ecb@ecb.com.au www.ecb.com.au

29 Snook St  
Clontarf QLD 4019  
Australia

Po Box 122  
Margate QLD 4019  
Australia

WORLD'S BEST  
ALLOY BULLBARS

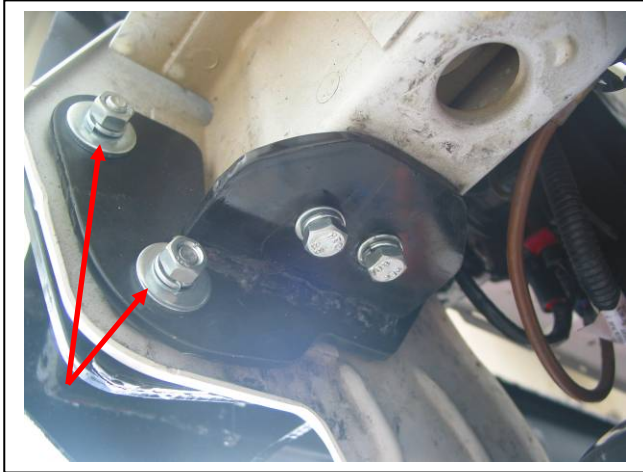


Figure 7: Nuts to rear of chassis mount.



Figure 9: remove marked section from plastic bumper cover.



Figure 14: Drivers side of sample vehicle.  
Measurement may vary.



Figure 16: Side view



Figure 17: Front view



**WORLD'S BEST  
ALLOY BULLBARS**

**East Coast Bullbars (ECB Pty Ltd)**

Tel: 07 3897 5700

Fax: 07 3283 1168

ecb@ecb.com.au www.ecb.com.au

29 Snook St  
Clontarf QLD 4019  
Australia

Po Box 122  
Margate QLD 4019  
Australia

## *We value your comments*

Dear Fitter,

ECB would like to know how you went with the installation of this product. We value your comment and may need to contact you to clarify some details so please complete your contact details clearly.

We would appreciate if you could complete as many of the following details as possible.

<b>Your Name:</b>	<b>Your contact No.</b>
<b>Product Part No.</b>	<b>Product Invoice No.</b>
<b>Product Description:</b>	<b>Make, model, and year of vehicle:</b>
<b>Product Work Order No.</b>	<b>Company your from/Company product purchased from:</b>

**Date of Fitment:** \_\_\_\_/\_\_\_\_/\_\_\_\_

Was the fitting hardware supplied complete?

Yes

No

If no what was not supplied

---

---

Did the installation go well?

Yes

No

Please provide comments

---

---

---

Please draw diagrams if you need to.

**Post to**

Reply Paid 122

PO Box 122

Margate QLD 4019

**Fax to**

(07) 3283 1168



**WORLD'S BEST  
ALLOY BULLBARS**

**East Coast Bullbars (ECB Pty Ltd)**

Tel: 07 3897 5700

Fax: 07 3283 1168

ecb@ecb.com.au [www.ecb.com.au](http://www.ecb.com.au)

29 Snook St  
Clontarf QLD 4019  
Australia

Po Box 122  
Margate QLD 4019  
Australia



WORLD'S BEST  
ALLOY BULLBARS

East Coast Bullbars (ECB Pty Ltd)

Tel: 07 3897 5700

Fax: 07 3283 1168

ecb@ecb.com.au www.ecb.com.au

29 Snook St  
Clontarf QLD 4019  
Australia

Po Box 122  
Margate QLD 4019  
Australia

## DESPATCH CHECKLIST NBV02SY

Work Order #	
Finish:	
Transport:	
Due Date:	

- 1 – Steel Chassis mounting brackets.
- 2 – Steel chassis support brackets.
- 1 – Bolt Kit.

**See other side of  
this page for  
photos of all  
mounts**



Is this product “the best it can be” Yes \_\_\_\_\_ / \_\_\_\_\_  
Wrapper’s initials / Checker initials  
 If **NO** fix before continuing

All parts checked and completed by:

Nut and bolts: \_\_\_\_\_ Date \_\_/\_\_/\_\_

Order control: \_\_\_\_\_ Date \_\_/\_\_/\_\_

Final wrap check: \_\_\_\_\_ Date \_\_/\_\_/\_\_



**East Coast Bullbars (ECB Pty Ltd)**

Tel: 07 3897 5700

Fax: 07 3283 1168

ecb@ecb.com.au www.ecb.com.au

29 Snook St  
Clontarf QLD 4019  
Australia

Po Box 122  
Margate QLD 4019  
Australia

**WORLD'S BEST  
ALLOY BULLBARS**

