



**WORLD'S BEST
ALLOY BULLBARS**

East Coast Bullbars (ECB Pty Ltd)

Tel: 07 3897 5700

Fax: 07 3283 1168

ecb@ecb.com.au www.ecb.com.au

29 Snook St
Clontarf QLD 4019
Australia

Po Box 122
Margate QLD 4019
Australia

NBMA31SY

REPLACES: 05.06.14
REVISED: 22.09.14

FITTING INSTRUCTIONS MAZDA CX5 MY13 VEHICLE FRONTAL PROTECTION SYSTEM (VFPS) FOR AIR BAG & ADR COMPLIANT VEHICLES

Check installation hardware before commencing.

1. Lift bonnet
2. Remove centre trim from top of bumper by removing two black push-pull clips. Remove four phillips head screws and four black push-pull clips from top of bumper.
3. From front of wheel arch (per side) remove three black push-pull clips, and ten phillips head screws, two black push-pull clips from under side of bumper. Pull centre of under body guard down and remove two black push-pull clips from bumper. Remove one 10 mm head bolt from rear wing (per side). Carefully pull out on rear wing to unclip bumper from guard, pull bumper forward to unclip from headlight. **See figure 1.** Disconnect wiring from fog lights, disconnect bumper parking sensors and unplug headlight washer line. Remove bumper.
4. Remove foam pad from bumper support.
5. Fit ECB steel mounting brackets onto front of bumper support using inner ECB steel mounting brackets, 3/8 x 4 bolts, flat washers and nyloc nuts and outer rear ECB steel mounting brackets, 3/8 x 3 1/2 bolts, flat washers and nyloc nuts (supplied). Centralise ECB steel mounting brackets to front of vehicle and measure inside of alloy protection bar to set ECB steel mounting bracket in correct position. Align and tighten bolts. **See figure 2.**
6. Mark and cut foam pad to fit around mounts on bumper reinforcement. **See figure 3.** (Secure with zip-tie if required)
7. Mark and cut grille opening in front bumper for steel mount to protrude through. **See figure 4 and 5.**
8. Refit bumper onto vehicle in the reverse steps of step 2 and 3.
9. Fit protection bar onto vehicle using two M10 x 40 bolts, flat washers, spring washers and nuts (supplied) (per side). Align protection bar with vehicle and tighten bolts. **See figure 6** side view and **figure 7** front view.
10. Test parking sensors for correct operation. Should parking sensors not work correctly, adjustment to protection bar will be required.

ENSURE NUMBER PLATE IS CLEARLY VISABLE

Note: When fitting/refitting the licence plate to the vehicle, ensure there is no obstruction to licence plate vision in accordance with local authorities. If required relocate licence plate to an alternate location.

Further VFPS Notes:

- a) Do not attach VFPS to the vehicle using anchorages not intended for this purpose (e.g. engine mounting bolts).
- b) Do not use this product for any vehicle make or model, other than those specified by the VFPS manufacturer.
- c) Do not remove the plaque or label from the VFPS.
- d) Do not modify the structure of the VFPS in any way.
- e) No accessory or fitment should project forward of the VFPS forward profile.
- f) **ENSURE THESE INSTRUCTIONS ARE LEFT WITH VEHICLE OWNER AND/OR OPERATOR.**



East Coast Bullbars (ECB Pty Ltd)

Tel: 07 3897 5700

Fax: 07 3283 1168

ecb@ecb.com.au www.ecb.com.au

WORLD'S BEST
ALLOY BULLBARS

29 Snook St
Clontarf QLD 4019
Australia

Po Box 122
Margate QLD 4019
Australia

IMPORTANT INFORMATION

Periodically check bolts and nuts for correct tightness, especially if travelling on rough roads

FITTING KIT

1 – Pair front steel mounting brackets	4 – M10 nut
1 – Pair rear inner steel mounting brackets – (In Kit)	4 – 3/8 X 4 bolts
1 – Pair rear outer steel mounting brackets – (In Kit)	4 – 3/8 x 3 1/2 bolt
4 – M10 x 40 bolt	8 – 3/8 nyloc nut
26 – M10 flat washer	4 – 300mm zip ties
4 – M10 spring washer	



Figure 1

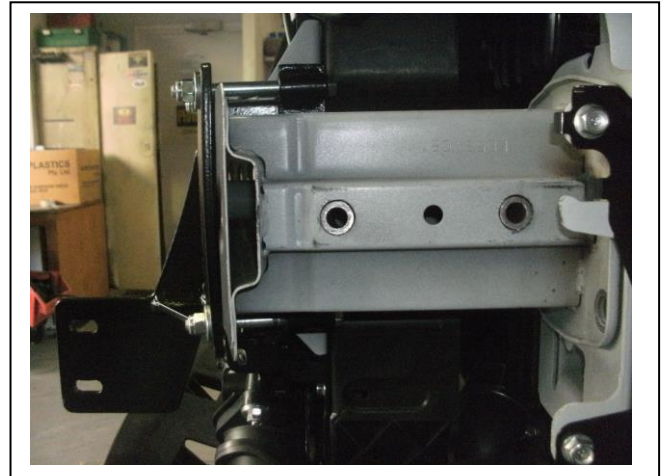


Figure 2

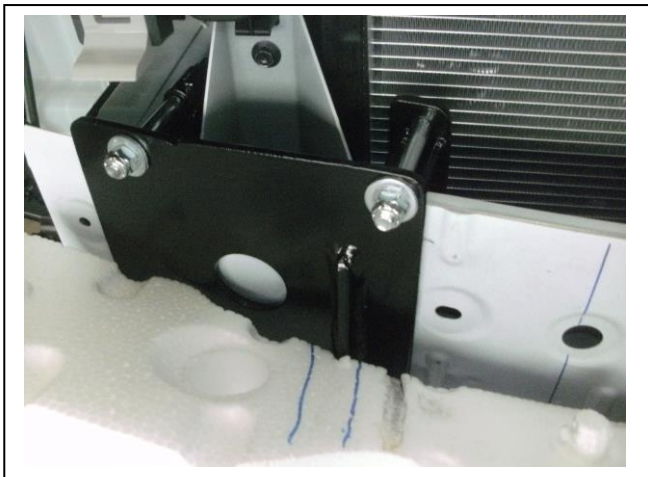


Figure 3

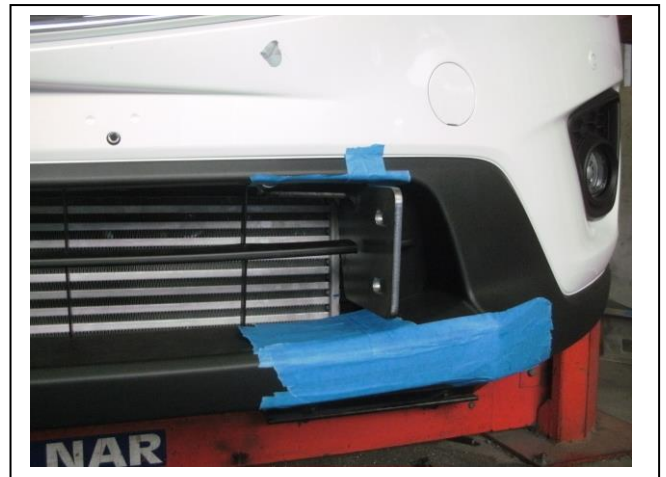


Figure 4



East Coast Bullbars (ECB Pty Ltd)

Tel: 07 3897 5700

Fax: 07 3283 1168

ecb@ecb.com.au www.ecb.com.au

29 Snook St
Clontarf QLD 4019
Australia

Po Box 122
Margate QLD 4019
Australia

WORLD'S BEST
ALLOY BULLBARS



Figure 5



Figure 6



Figure 7



**WORLD'S BEST
ALLOY BULLBARS**

East Coast Bullbars (ECB Pty Ltd)

Tel: 07 3897 5700

Fax: 07 3283 1168

ecb@ecb.com.au www.ecb.com.au

29 Snook St
Clontarf QLD 4019
Australia

Po Box 122
Margate QLD 4019
Australia

We value your comments

Dear Fitter,

ECB would like to know how you went with the installation of this product. We value your comment and may need to contact you to clarify some details so please complete your contact details clearly.

We would appreciate if you could complete as many of the following details as possible.

Your Name:	Your contact No.
Product Part No.	Product Invoice No.
Product Description:	Make, model, and year of vehicle:
Product Work Order No.	Company your from/Company product purchased from:

Date of Fitment: ___/___/___

Was the fitting hardware supplied complete? Yes No

If no what was not supplied

Did the installation go well? Yes No

Please provide comments

Please draw diagrams if you need to.

Post to
Reply Paid 122
PO Box 122
Margate QLD 4019

Fax to
(07) 3283 1168



WORLD'S BEST
ALLOY BULLBARS

East Coast Bullbars (ECB Pty Ltd)

Tel: 07 3897 5700

Fax: 07 3283 1168

ecb@ecb.com.au www.ecb.com.au

29 Snook St
Clontarf QLD 4019
Australia

Po Box 122
Margate QLD 4019
Australia

DESPATCH CHECKLIST NBMA31SY

Work Order #		See other side off this page for photos of all mounts
Finish:		
Transport:		
Due Date:		

- OC.....1 – Pair front Steel mounting brackets.
- BK.....1 – Pair rear inner Steel mounting brackets.
- BK.....1 – Pair rear outer Steel mounting brackets.
- BK.....1 – Bolt Kit.



Is this product “the best it can be” Yes _____ / _____
Wrapper's initials / Checker initials

If NO fix before continuing

All parts checked and completed by:

Nut and bolts: _____ Date __/__/__

Order control: _____ Date __/__/__

Final wrap check: _____ Date __/__/__



East Coast Bullbars (ECB Pty Ltd)

Tel: 07 3897 5700

Fax: 07 3283 1168

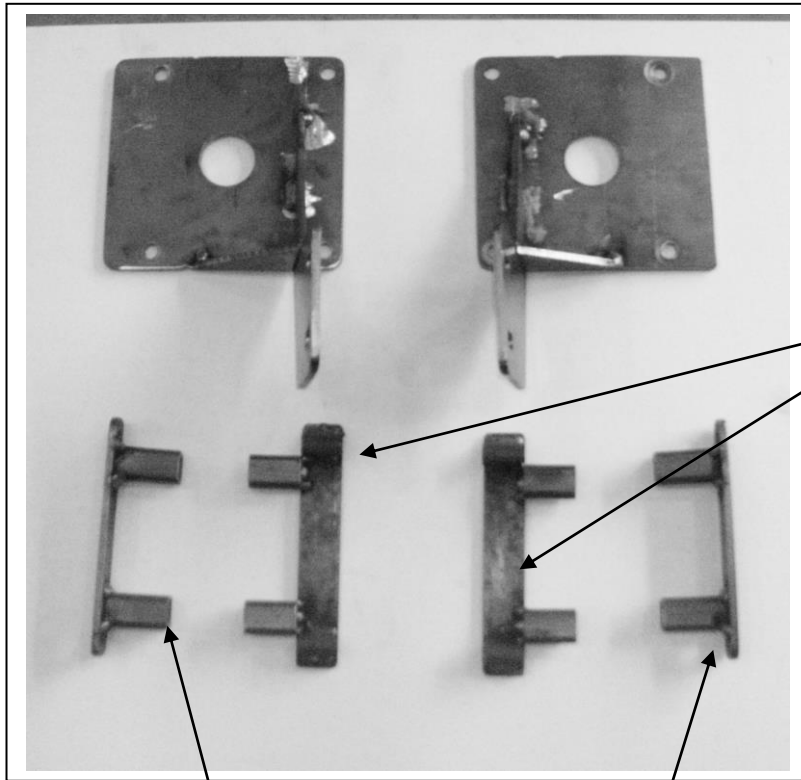
ecb@ecb.com.au www.ecb.com.au

29 Snook St
Clontarf QLD 4019
Australia

Po Box 122
Margate QLD 4019
Australia

WORLD'S BEST
ALLOY BULLBARS

Front Mounts - Pair



Outer Rear mounts - **IN KIT**

Inner Rear mounts - **IN KIT**

_____/_____
Wrapper's initials / Checker initials