



WORLD'S BEST
ALLOY BULLBARS

East Coast Bullbars (ECB Pty Ltd)

Tel: 07 3897 5700

Fax: 07 3283 1168

ecb@ecb.com.au www.ecb.com.au

29 Snook St
Clontarf QLD 4019
Australia

Po Box 122
Margate QLD 4019
Australia

NBH26SY / NB6H26SY

REPLACES: 00.00.00

REVISED: 20.04.12

FITTING INSTRUCTIONS

HOLDEN CAPTIVA 7 SERIES 2 3/11 on 76MM NUDGE BAR AND SERIES 2 NUDGE BAR VEHICLE FRONTAL PROTECTION SYSTEM (VFPS) FOR AIR BAG & ADR COMPLIANT VEHICLES

Caution: To minimise vibration on vehicle, the ECB mounting system must be fully fitted as per these instructions. Failure to do this will void the warranty and could potentially cause product failure.

Check installation hardware before commencing.

1. Lift bonnet.
2. Remove plastic filler panel between grille and radiator support, nine plastic screw clips.
3. Remove headlights from vehicle, two 10mm head bolts from headlight to radiator support mounts and one 10mm head bolt from lower grille side. Disconnect as removing.
4. To remove bumper cover. Remove two 7mm head screws from front of wheel arch(per side), one 7mm head screw from rear of join in plastic bumper and guard (per side), two 7mm head screws from under side of bumper cover(per side) and three 13mm head bolts from underside centre of plastic bumper. Carefully pull side of plastic bumper out from vehicle to release plastic clips, then pull forward to release clips where headlights are removed. Remove plastic bumper cover. Disconnect fog lights if fitted. **See figure 1**
5. Remove air dam from drivers side of radiator, three plastic screw clips.
6. Remove four 12mm head bolts from radiator support to crash can (per side).
7. Remove two 12mm head bolts (per side) from inside of crash can to chassis rail. Slide ECB crash can support mounting bracket (supplied) between radiator and crash can , **See figure 2**. Fit using two M8 x 35 bolts, spring washers and flat washers (supplied) into front of chassis rail. **Tighten all bolts.**
8. Slide ECB lower mount between radiator support and crash can with lower mount hole to inside. Fit two outer M8 x 30 bolts, spring washers and flat washers into crash can. **Finger tighten only.**
9. Fit ECB outer mount on outside of radiator support using two M8 x 120mm bolts, spring washers and flat washers and one 3/8 x 1 1/4 bolt, flat washer, spring washer and nut into lower hole in mount. **See figure 3**. Using top holes in outer mount as a guide, drill to 10mm. **Note: Blow filings clear and treat all exposed metal with a rust inhibitor.** Install two 3/8 x 2 3/4 bolts, flat washers, spring washers and nuts. Finger tighten only.
10. **Tighten all bolts on mounting system.**
11. Trim radiator air dam to allow for protrusion of mount. **See figure 4**. Refit to vehicle using original equipment clips.
12. Refit bumper and headlights to vehicle as per reverse of steps 3 and 4. Do not fit radiator support to grille cover at this time.

13. Fit ECB protection bar to ECB steel mounting brackets using two 3/8 x 1 1/2 bolts (per side) (supplied). Rear bolt is accessed from behind grille at top. **Finger tighten only.**
14. Align ECB protection bar to vehicle. **See figures 5 and 6 for 76mm Nudge Bar and 7 and 8 for Series 2 Nudge Bar. Tighten all bolts.**
15. Fit radiator support to bumper cover trim using original plastic screw clips.

ENSURE NUMBER PLATE IS CLEARLY VISABLE

Note: When fitting/refitting the licence plate to the vehicle, ensure there is no obstruction to licence plate vision in accordance with local authorities. If required relocate licence plate to an alternate location.

Further VFPS Notes:

- a) Do not attach VFPS to the vehicle using anchorages not intended for this purpose (e.g. engine mounting bolts).
- b) Do not use this product for any vehicle make or model, other than those specified by the VFPS manufacturer.
- c) Do not remove the plaque or label from the VFPS.
- d) Do not modify the structure of the VFPS in any way.
- e) No accessory or fitment should project forward of the VFPS forward profile.
- f) **ENSURE THESE INSTRUCTIONS ARE LEFT WITH VEHICLE OWNER AND/OR OPERATOR.**

IMPORTANT INFORMATION

Periodically check bolts and nuts for correct tightness, especially if travelling on rough roads

FITTING KIT

1 – Pair ECB steel crash can support mounts	10 – 3/8 spring washers
1 – Pair ECB steel outer mounting brackets	10 – 3/8 nuts
2 – ECB lower steel mounting brackets	4 – M8 x 35 bolts
2 – 3/8 x 1 1/4 bolts	4 – M8 x 30 bolts
4 – 3/8 x 2 3/4 bolts	4 – M8 x 120 bolts
4 – 3/8 x 1 1/2 bolts	12 – M8 flat washers
20 – 3/8 flat washers	12 – M8 spring washers



Figure 1: Vehicle with bumper removed

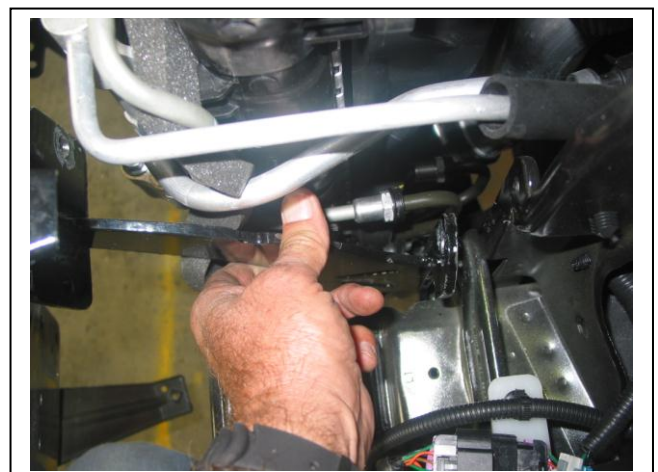


Figure 2: Slide ECB crash can support between chassis mounting and radiator support.



East Coast Bullbars (ECB Pty Ltd)

Tel: 07 3897 5700

Fax: 07 3283 1168

ecb@ecb.com.au www.ecb.com.au

WORLD'S BEST
ALLOY BULLBARS

29 Snook St
Clontarf QLD 4019
Australia

Po Box 122
Margate QLD 4019
Australia

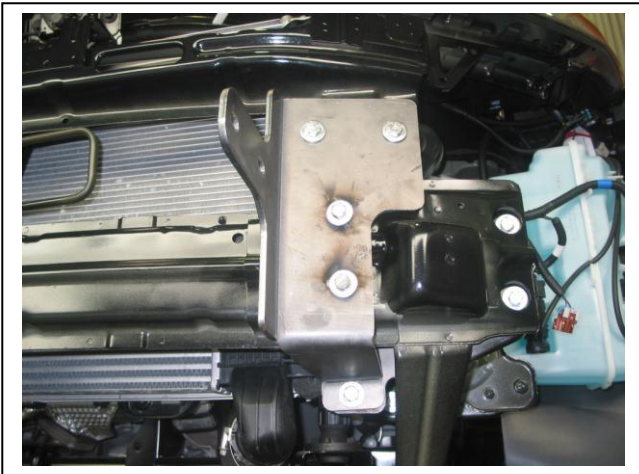


Figure 3: Outer mounting bracket fitted to front of radiator support



Figure 4: Bottom corner of drivers side air dam. Trim along white line.



Figure 5: Front view, 76mm Nudge Bar



Figure 6: Side view, 76mm Nudge Bar



Figure 7: Front view, Series 2 Nudge Bar



Figure 8: Side view, Series 2 Nudge Bar



**WORLD'S BEST
ALLOY BULLBARS**

East Coast Bullbars (ECB Pty Ltd)

Tel: 07 3897 5700

Fax: 07 3283 1168

ecb@ecb.com.au www.ecb.com.au

29 Snook St
Clontarf QLD 4019
Australia

Po Box 122
Margate QLD 4019
Australia

We value your comments

Dear Fitter,

ECB would like to know how you went with the installation of this product. We value your comment and may need to contact you to clarify some details so please complete your contact details clearly.

We would appreciate if you could complete as many of the following details as possible.

Your Name:	Your contact No.
Product Part No.	Product Invoice No.
Product Description:	Make, model, and year of vehicle:
Product Work Order No.	Company your from/Company product purchased from:

Date of Fitment: ____/____/____

Was the fitting hardware supplied complete?

Yes

No

If no what was not supplied

Did the installation go well?

Yes

No

Please provide comments

Please draw diagrams if you need to.

Post to
Reply Paid 122
PO Box 122
Margate QLD 4019

Fax to
(07) 3283 1168



WORLD'S BEST
ALLOY BULLBARS

East Coast Bullbars (ECB Pty Ltd)

Tel: 07 3897 5700

Fax: 07 3283 1168

ecb@ecb.com.au www.ecb.com.au

29 Snook St
Clontarf QLD 4019
Australia

Po Box 122
Margate QLD 4019
Australia

DESPATCH CHECKLIST NBH26SY, NB6H26SY

Work Order #	
Finish:	
Transport:	
Due Date:	

- 1 – Pair Steel outer mounting brackets.
- 1 – Pair steel crash can support mounts
- 2 – Lower mounting brackets
- 1 – Bolt Kit.

**See other side off
this page for
photos of all
mounts**



Is this product “the best it can be” Yes _____/_____
Wrapper’s initials / Checker initials

If **NO** fix before continuing

All parts checked and completed by:

Nut and bolts: _____ Date __/__/__

Order control: _____ Date __/__/__

Final wrap check: _____ Date __/__/__



East Coast Bullbars (ECB Pty Ltd)

Tel: 07 3897 5700

Fax: 07 3283 1168

ecb@ecb.com.au www.ecb.com.au

WORLD'S BEST
ALLOY BULLBARS

29 Snook St
Clontarf QLD 4019
Australia

Po Box 122
Margate QLD 4019
Australia

