



**WORLD'S BEST
ALLOY BULLBARS**

East Coast Bullbars (ECB Pty Ltd)

Tel: 07 3897 5700

Fax: 07 3283 1168

ecb@ecb.com.au www.ecb.com.au

29 Snook St
Clontarf QLD 4019
Australia

Po Box 122
Margate QLD 4019
Australia

NBH110SY

REPLACES: 26.11.13

REVISED: 21.01.21

FITTING INSTRUCTIONS

VF COMMODORE 05/13-08/15 EVOKE 76mm NUDGE BAR VEHICLE FRONTAL PROTECTION SYSTEM (VFPS) FOR AIR BAG & ADR COMPLIANT VEHICLES

Check installation hardware before commencing.

1. Lift bonnet.
2. From underside of bumper remove nine T20 Torx screws and two 13mm head bolts. Front of wheel arch remove three T15 Torx head screw (per side). Remove six 10mm head bolts and six T20 Torx head screws from top to bumper between grille and radiator. Unplug bumper sensor harness from under drivers side headlight. Pull out on rear bumper wing to release clips on guard (**see figure 1**) and forward to release plastic clips under headlights. Remove bumper from vehicle.
3. Remove under bumper skid plate. Six T15 Torx head screws from under front of wheel arch and four 13mm head bolts on underside.
4. Windscreen washer bottle unbolts (four 10mm head bolts) from rear of alloy cross member. **NOTE:** A deep socket is best suited for removing the three 10mm head bolts. Use caution near radiator; position a thin piece of metal or cardboard between ratchet and radiator to ensure no damage.
5. Remove alloy cross member from front of chassis. Six 13mm head bolts and two 10 mm head bolts on underside rear of chassis.
6. Slide steel mounting brackets (supplied) over alloy cross member and align all holes in steel mounting brackets to centre of holes in alloy cross member. Mark and drill 10mm holes both sides as per **figure 2**. **NOTE:** Holes drilled on underside of cross member, not on top.
7. Attach steel mounting brackets (supplied) to alloy cross member using 3/8 x 2 bolts, 3/8 nut plate on wire, flat and spring washers (supplied). **TIGHTEN BOLTS/NUTS.**
8. Trim plastic air dam using sharp knife, die grinder or similar, to allow fitment of steel mounting brackets. **See figure 3 and 4.**
9. Fit steel mounting brackets and alloy cross member to front of chassis using six M8 x 1.25 x 30mm bolts, flat and spring washers (supplied) and original equipment 10mm head bolts to rear of chassis rails. **LOOSELY TIGHTEN BOLTS AT THIS POINT.**
10. Refit windscreen washer bottle to rear of cross member using original bolts. **NOTE:** Use caution near radiator, position a thin piece of metal or cardboard between ratchet and radiator to ensure no damage. **TIGHTEN ALL BOLTS** attaching steel mounting brackets and cross member to front of chassis.
11. Disconnect and remove parking sensor from grille only. Remove three plastic wiring clips from rear of fog light housing section. Disconnect parking sensor in fog light housing section and remove wire from hole in plastic bumper to allow more wiring to centre of vehicle. Fit 2nd plastic clip from outside of wiring loom into inner hole of fog light housing. Reconnect fog light housing parking sensor. **See figures 5 and 6.**



**WORLD'S BEST
ALLOY BULLBARS**

East Coast Bullbars (ECB Pty Ltd)

Tel: 07 3897 5700

Fax: 07 3283 1168

ecb@ecb.com.au www.ecb.com.au

29 Snook St
Clontarf QLD 4019
Australia

Po Box 122
Margate QLD 4019
Australia

12. Trim lower grille and backing inserts in bumper cover to fit over steel mounting brackets. Refer to **figures 7 and 8** for details. Install blanking plug (supplied) into parking sensor hole in grille. Feed centre parking sensor wiring through hole in grille.
13. Refit bumper cover using original bolts and clips. **NOTE:** Connect parking sensors. Ensure parking sensor wiring reaches approximately 30mm past end of ECB steel mount.
14. Fit protection bar to outside of steel mounting brackets using four M10 x 30bolts, nuts, flat and spring washers (supplied).
15. Align protection bar with vehicle. Refer to **figure 9** for front view and **figure 10** for side views. **TIGHTEN ALL BOLTS.**
16. Connect parking sensors to original equipment harness. Gently install parking sensor into rear of ECB parking sensor mount and affix to rear of mount using zip tie (supplied). Do not over tighten. Fit ECB parking sensor mount to front of protection bar using two M6 x 20 bolts, flat washers and nyloc nuts (supplied). Ensure sensor brackets are parallel with front of protection bar, sensors will be slightly upward facing. Check sensor for correct operation. NOTE: Adjustment may be required. **See figures 11, 12, 13 and 14.** Attach sensor wiring to Protection bar mount using 300mm zip tie.
17. Refit under body skid plate using original clips. Attach front of under body skid plate to front of bumper using original bolts. Ensure all other clips and bolts are refitted to top of bumper and plastic inner guard.

ENSURE NUMBER PLATE IS CLEARLY VISABLE

ENSURE THESE INSTRUCTIONS ARE LEFT WITH VEHICLE OWNER AND/OR OPERATOR

Note: When fitting/refitting the licence plate to the vehicle, ensure there is no obstruction to licence plate vision in accordance with local authorities. If required relocate licence plate to an alternate location.

Further VFPS Notes:

- a) Do not attach VFPS to the vehicle using anchorages not intended for this purpose (e.g. engine mounting bolts).
- b) Do not use this product for any vehicle make or model, other than those specified by the VFPS manufacturer.
- c) Do not remove the plaque or label from the VFPS.
- d) Do not modify the structure of the VFPS in any way.
- e) No accessory or fitment should project forward of the VFPS forward profile.
- f) **ENSURE THESE INSTRUCTIONS ARE LEFT WITH VEHICLE OWNER AND/OR OPERATOR.**

IMPORTANT INFORMATION

Periodically check bolts and nuts for correct tightness, especially if travelling on rough roads

FITTING KIT

1 – Pair Steel mounting brackets	6 – M8 x 17 flat washers.
1 – Pair parking sensor mounts	6 – M8 spring washers.
2 – 3/8 x 2 bolts.	4 – M6 x 20 bolts
2 – 16 x 25 x 6mm nut plate on 400mm wire.	4 – M6 nyloc nuts
4 – M10 x 1.5 x 30 bolts	8 – M6 flat washers
4 – M10 x 1.5 nuts	4 – M6 spring washers
10 – M10 flat washers	2 – 150mm zip ties
6 – M10 spring washers	2 – 300mm zip ties
6 – M8 x 1.25 x 30 bolts.	2 – 20mm black plugs (ICINSERT20)



East Coast Bullbars (ECB Pty Ltd)

Tel: 07 3897 5700

Fax: 07 3283 1168

ecb@ecb.com.au www.ecb.com.au

WORLD'S BEST
ALLOY BULLBARS

29 Snook St
Clontarf QLD 4019
Australia

Po Box 122
Margate QLD 4019
Australia



Figure 1

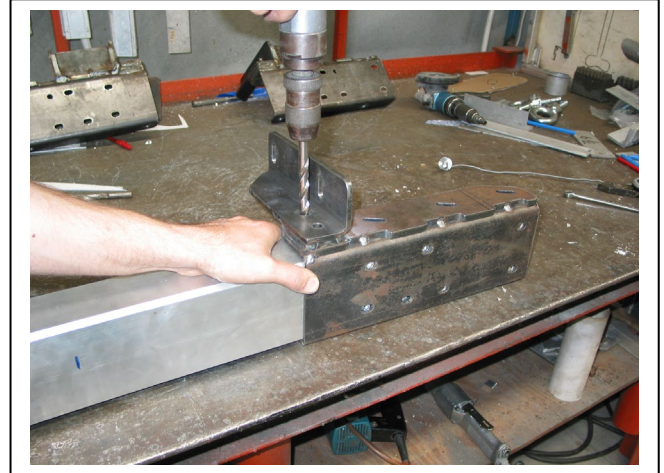


Figure 2

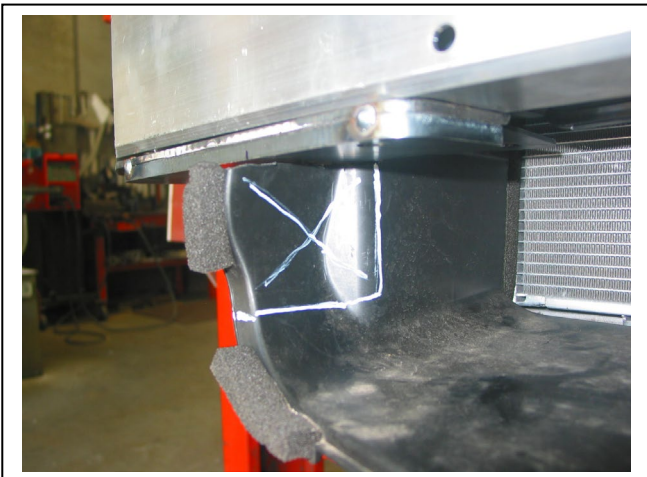


Figure 3 – Driver's side shown

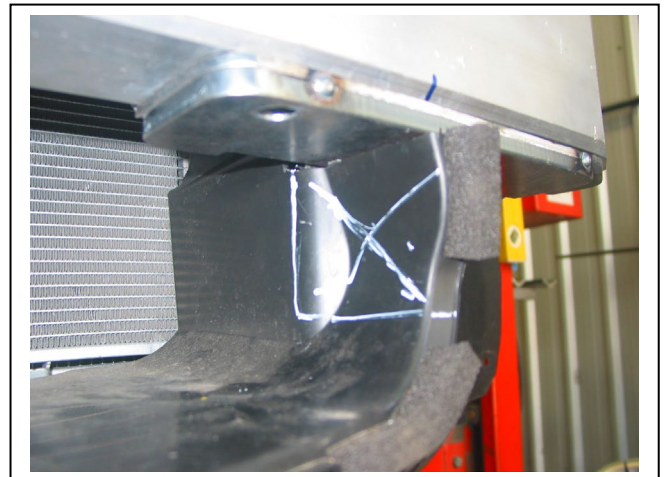


Figure 4 – Passengers side shown



Figure 5 – Parking sensor wiring before movement



Figure 6 – Parking sensor wiring after movement



East Coast Bullbars (ECB Pty Ltd)

Tel: 07 3897 5700

Fax: 07 3283 1168

ecb@ecb.com.au www.ecb.com.au

WORLD'S BEST
ALLOY BULLBARS

29 Snook St
Clontarf QLD 4019
Australia

Po Box 122
Margate QLD 4019
Australia



Figure 7 – Grille trim.



Figure 8 – Mounts shown bumper fitted



Figure 9 – Front view



Figure 10 – Side View



Figure 11 – Sensor mount fitted



Figure 12 – Protection bar with sensors fitted



**WORLD'S BEST
ALLOY BULLBARS**

East Coast Bullbars (ECB Pty Ltd)

Tel: 07 3897 5700

Fax: 07 3283 1168

ecb@ecb.com.au www.ecb.com.au

29 Snook St
Clontarf QLD 4019
Australia

Po Box 122
Margate QLD 4019
Australia



Figure 13 – sensors parallel to front face of ECB Protection bar



Figure 14 – sensors parallel to front face of ECB Protection bar



**WORLD'S BEST
ALLOY BULLBARS**

East Coast Bullbars (ECB Pty Ltd)

Tel: 07 3897 5700

Fax: 07 3283 1168

ecb@ecb.com.au www.ecb.com.au

29 Snook St
Clontarf QLD 4019
Australia

Po Box 122
Margate QLD 4019
Australia

We value your comments

Dear Fitter,

ECB would like to know how you went with the installation of this product. We value your comment and may need to contact you to clarify some details so please complete your contact details clearly.

We would appreciate if you could complete as many of the following details as possible.

Your Name:	Your contact No.
Product Part No.	Product Invoice No.
Product Description:	Make, model, and year of vehicle:
Product Work Order No.	Company your from/Company product purchased from:

Date of Fitment: ____/____/____

Was the fitting hardware supplied complete?

Yes

No

If no what was not supplied

Did the installation go well?

Yes

No

Please provide comments

Please draw diagrams if you need to.

Post to
Reply Paid 122
PO Box 122
Margate QLD 4019

Fax to
(07) 3283 1168



WORLD'S BEST
ALLOY BULLBARS

East Coast Bullbars (ECB Pty Ltd)

Tel: 07 3897 5700

Fax: 07 3283 1168

ecb@ecb.com.au www.ecb.com.au

29 Snook St
Clontarf QLD 4019
Australia

Po Box 122
Margate QLD 4019
Australia

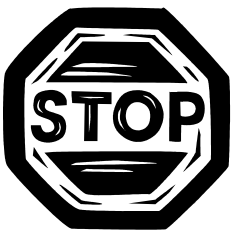
DESPATCH CHECKLIST NBH110SY

Work Order #	
Finish:	
Transport:	
Due Date:	

OC.....1 – Pair steel mounting brackets.

BK.....1 – Pair alloy sensor brackets (P/C black) brackets to be carefully wrapped separately as are presentation item.

BK.....1 – Bolt Kit.



Is this product “the best it can be” Yes _____ / _____
Wrapper's initials / Checker initials

If NO fix before continuing

All parts checked and completed by:

Nut and bolts: _____ Date __ / __ / __

Order control: _____ Date __ / __ / __

Final wrap check: _____ Date __ / __ / __



East Coast Bullbars (ECB Pty Ltd)

Tel: 07 3897 5700

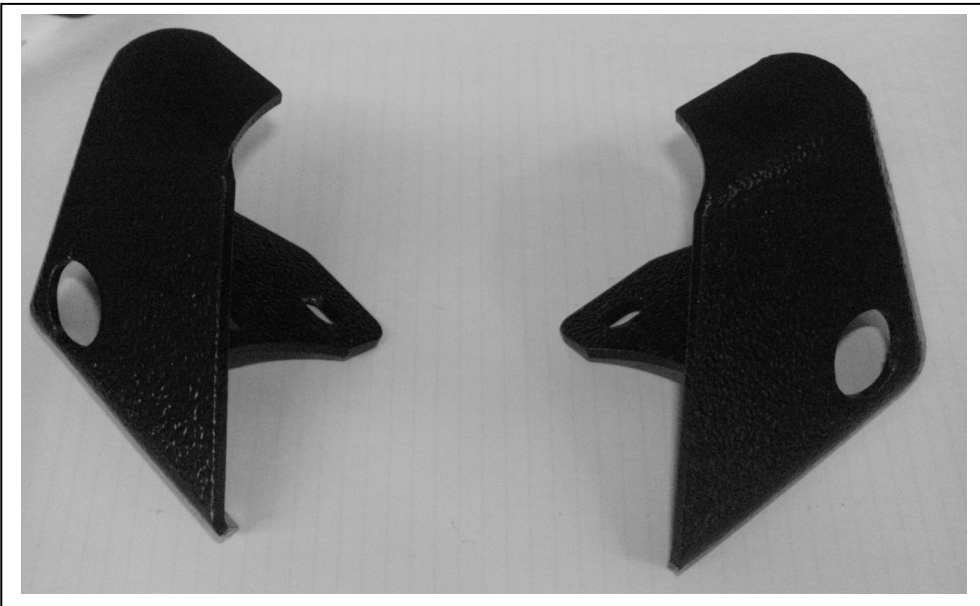
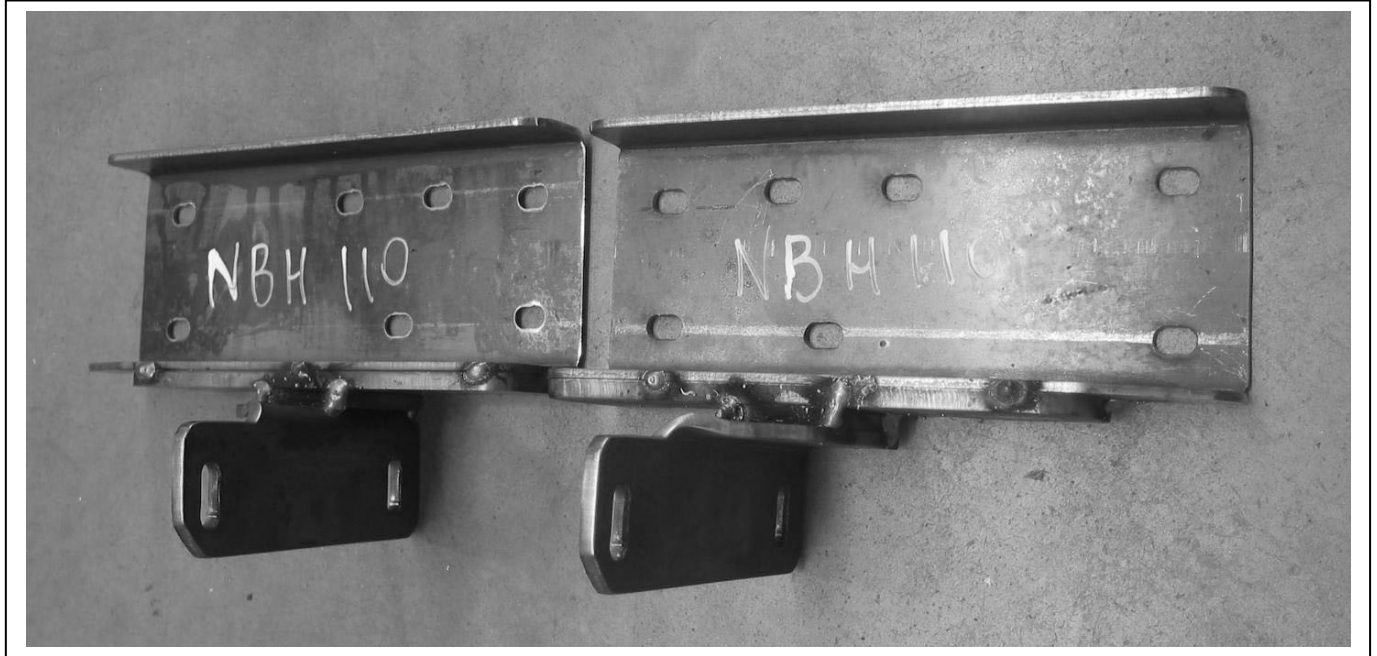
Fax: 07 3283 1168

ecb@ecb.com.au www.ecb.com.au

WORLD'S BEST
ALLOY BULLBARS

29 Snook St
Clontarf QLD 4019
Australia

Po Box 122
Margate QLD 4019
Australia



Wrapper's initials / Checker initials