



WORLD'S BEST  
ALLOY BULLBARS

East Coast Bullbars (ECB Pty Ltd)

Tel: 07 3897 5700

Fax: 07 3283 1168

ecb@ecb.com.au www.ecb.com.au

29 Snook St  
Clontarf QLD 4019  
Australia

Po Box 122  
Margate QLD 4019  
Australia

## NB6F37SY / NBF37SY

REPLACES: 22.12.14  
REVISED: 01.12.15

### FITTING INSTRUCTIONS

#### FORD TERRITORY 7/14 ON 63MM SERIES 2 NUDGE BAR AND 76MM NUDGE BAR VEHICLE FRONTAL PROTECTION SYSTEM (VFPS) FOR AIR BAG & ADR COMPLIANT VEHICLES

Check installation hardware before commencing.

Special Requirements: Tube of clear neutral cure silicon.

1. Lift bonnet.
2. Remove radiator support to grille cover. Four plastic screw clips, two plastic push pull clips across rear and four clips at front attached to grille. Slide hand into grille to unclip.
3. From under vehicle, remove lower plastic air deflector, eighteen 7mm head screws. Pull under body guard forward and down at rear, then slide rearward to remove.
4. Remove three plastic push pull clips (per side) from front of inner guard. Behind inner guard at join from bumper cover to guard, remove two 10mm head screws (per side), one pointing up on vehicle and one pointing forward. From top of bumper between headlights, remove two 10mm head bolts. Carefully pull sides of bumper rearward and out from vehicle to release guard clips, lift from positioning lugs between headlights. **See figure 1.** Disconnect fog lights, Parking sensors from under drivers side and antennae wire from passengers side as removing (if fitted). **Caution: bumper side plastic clips are easily damaged. Please use care when removing sides of bumper cover.**
5. Remove lower polystyrene bumper support.
6. Clamp ECB steel mounting brackets (supplied) onto front bumper support aligning top and outside edge with arrow up.  
For Series 2 Nudge Bar: Using outside measurement of alloy mounts, set inner measurement of ECB steel mounting brackets to match.  
For 76mm Nudge Bar: Using inner measurement of alloy mounts, set outer measurement of ECB steel mounting brackets to match.  
Be sure to allow 3 to 4 mm room above ECB Steel mounting brackets for intercooler tube.
7. Ensure ECB steel mounting brackets are central to vehicle. When correct measurement is achieved, using ECB steel mounting brackets as a guide, drill four holes (per side) in bumper support to 10mm. **Blow filings clear and treat all exposed metal with a rust inhibitor. See figure 2. Caution: Ensure oil tube is clear of drilling area on diesel models.**
8. Install ECB steel mounting brackets to bumper support using four M10 x 35 bolts, flat washers, spring washers and nuts (per side) (supplied). Use M10 nut and washer on wire (supplied) for passengers side nut under intercooler pipe. **Warning:** Ensure ECB steel mounting bracket hardware does not touch any vehicle pipe work as damage to vehicle could result. Lower air conditioning pipe work can be moved away from ECB steel mounting bracket by gently bending alloy section of tube either ends of flexible section. Caution is needed to not place strain on air conditioning fittings. **See figure 3. TIGHTEN ALL BOLTS.** Trim and crimp nut wire to bumper support to avoid rattling.



**WORLD'S BEST  
ALLOY BULLBARS**

**East Coast Bullbars (ECB Pty Ltd)**

Tel: 07 3897 5700

Fax: 07 3283 1168

ecb@ecb.com.au www.ecb.com.au

29 Snook St  
Clontarf QLD 4019  
Australia

Po Box 122  
Margate QLD 4019  
Australia

9. Measure, mark and cut polystyrene padding to fit back on bumper support. Place polystyrene padding in position on bumper support and using polystyrene as a guide, select one hole in front of bumper support. Enlarge hole in bumper support to 6mm. **Blow filings clear and treat all exposed metal with a rust inhibitor.** Refit using 6mm Christmas tree plugs and 6mm washer in previously drilled holes. **See figure 4 and 5.**
10. Remove grille from front bumper. Using sharp scissors or similar, carefully cut out bumper template (supplied). Align bumper template with inner edge of grille opening in bumper and mark cut area. **CAUTION:** As some printers may vary, check measure template to ensure correct dimensions.
11. Cut marked area from bumper cover using pull saw, hacksaw or similar.
12. Refit front bumper as per reverse of step 4. Ensure when refitting to pull rear edge of bumper toward rear of vehicle to allow correct positioning on plastic retainer. If bumper is not re-seated correctly, the rear of the bumper will want to release itself from the guard. Do not refit radiator support or grille cover at this time.
13. Using grille opening and mounts as a guide, mark and cut grille to fit around steel mounts. Allow extra room to inside of mounts for alloy bar mount. Clean internal surfaces of outer silver grille trim using Methylated spirits or similar. Using clear neutral cure silicon, fill cut ends of outer silver grille trim. This not only stops dirt build up, it also stops possible rattle of parts. Fit grille to vehicle. **See figure 6.**
14. Fit ECB protection bar to ECB steel mounting brackets using M10 x 40 bolts, flat washers, spring washers and nuts (supplied). **FINGER TIGHTEN ONLY.** Rear bolts are accessed from under vehicle, M10 x 40 bolt on wire in fitting kit if required for ease of fitment.
15. Align protection bar to vehicle and pull as far forward as possible on mounts, tighten firmly enough for testing only. Test parking sensors for correct operation. If parking sensors come on, gently push Nudge Bar rearward until parking sensors work correctly. **See figures 7 and 9 for 76mm Nudge Bar, 8 and 10 for Series 2 Nudge Bar. Note:** Sensors only activate in reverse or when button is pressed in cabin of vehicle in drive under 15 Km/h.
16. Refit under body guard to underside of vehicle and radiator support to grill cover under bonnet, as per reverse of steps 2 and 3.

#### **ENSURE NUMBER PLATE IS CLEARLY VISABLE**

**Note:** When fitting/refitting the licence plate to the vehicle, ensure there is no obstruction to licence plate vision in accordance with local authorities. If required relocate licence plate to an alternate location.

#### **Further VFPS Notes:**

- a) Do not attach VFPS to the vehicle using anchorages not intended for this purpose (e.g. engine mounting bolts).
- b) Do not use this product for any vehicle make or model, other than those specified by the VFPS manufacturer.
- c) Do not remove the plaque or label from the VFPS.
- d) Do not modify the structure of the VFPS in any way.
- e) No accessory or fitment should project forward of the VFPS forward profile.
- f) **ENSURE THESE INSTRUCTIONS ARE LEFT WITH VEHICLE OWNER AND/OR OPERATOR.**

#### **IMPORTANT INFORMATION**

Periodically check bolts and nuts for correct tightness, especially if travelling on rough roads.



**WORLD'S BEST  
ALLOY BULLBARS**

**East Coast Bullbars (ECB Pty Ltd)**

Tel: 07 3897 5700

Fax: 07 3283 1168

ecb@ecb.com.au www.ecb.com.au

29 Snook St  
Clontarf QLD 4019  
Australia

Po Box 122  
Margate QLD 4019  
Australia

## **FITTING KIT**

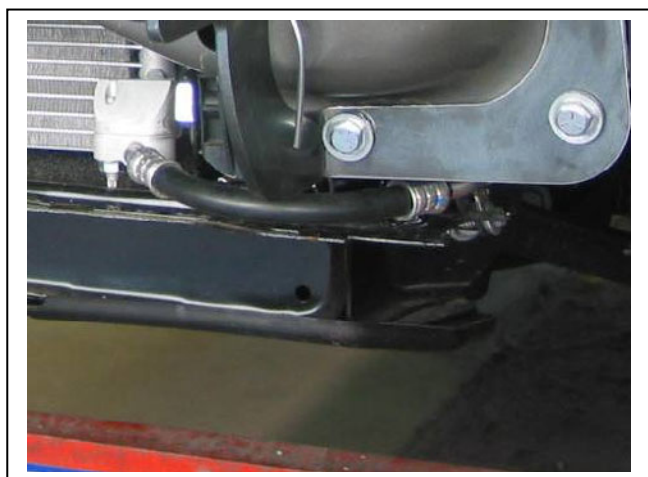
1 – Pair ECB steel mounting brackets.	23 – M10 flat washers
8 – M10 x 1.5 x 35 bolts	12 – 3/8 spring washers
4 – M10 x 1.5 x 40 bolts	11 – M10 nuts
2 – M10 x 1.5 x 40 bolt and washer on wire	2 – M6 flat washers
1 – M10 x 1.5 nut and washer on 200mm wire	2 – 6 x 35 Christmas tree plug



**Figure 1:** Pull bumper rearward and out to release.



**Figure 2:** Drill four holes to 10mm (per side)



**Figure 3:** Check clearance between ECB steel mount and air conditioning pipe



**Figure 4:** Enlarge one hole per side for polystyrene foam bumper support



**WORLD'S BEST  
ALLOY BULLBARS**

**East Coast Bullbars (ECB Pty Ltd)**

Tel: 07 3897 5700

Fax: 07 3283 1168

ecb@ecb.com.au www.ecb.com.au

29 Snook St  
Clontarf QLD 4019  
Australia

Po Box 122  
Margate QLD 4019  
Australia



**Figure 5:** Place M6 washer over Christmas tree plug to enlarge size of head.



**Figure 6:** Lower grille cut out



**Figure 7:** 76mm Nudge Bar front view



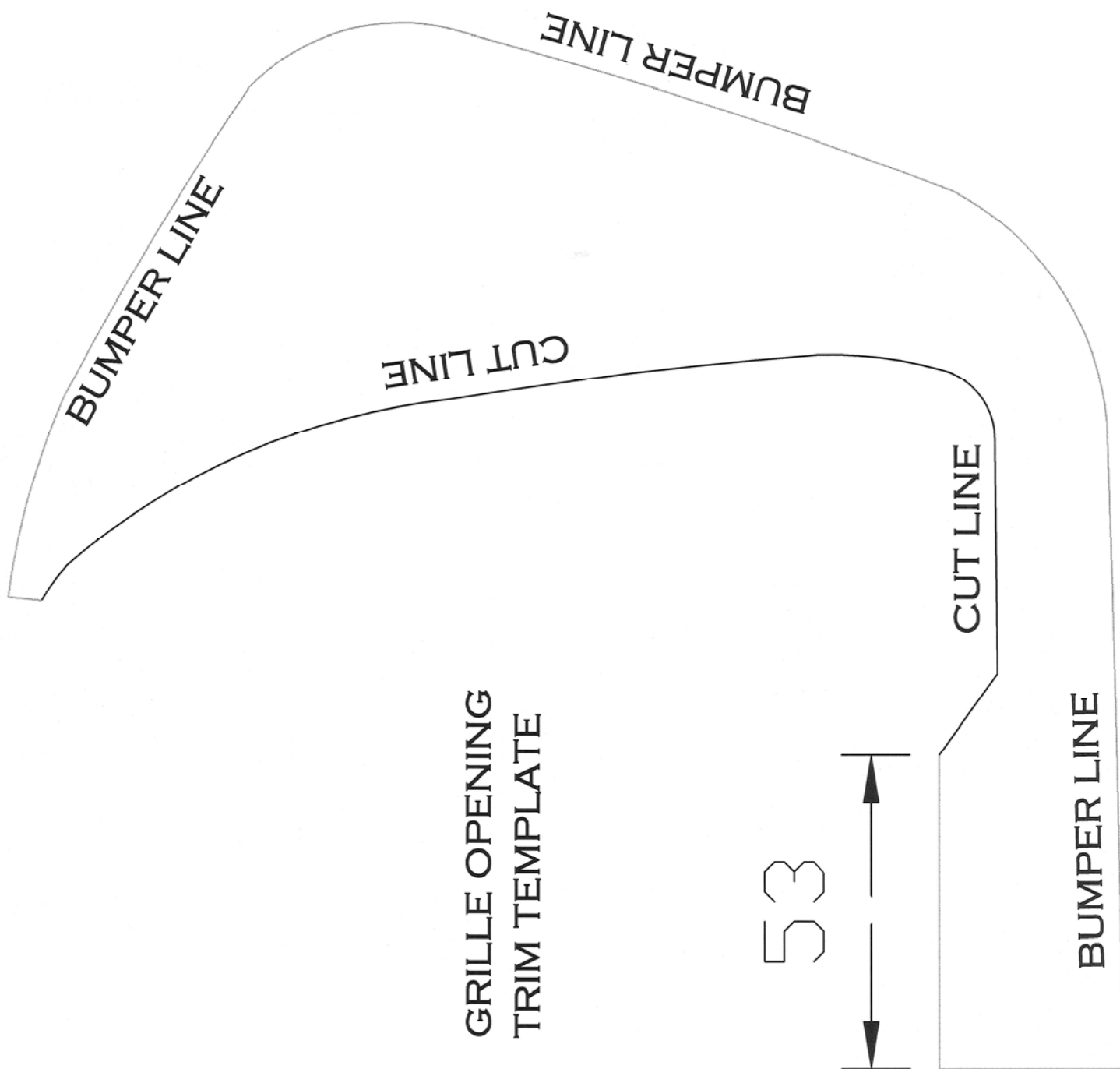
**Figure 8:** Series 2 Nudge Bar front view



**Figure 9:** 76mm Nudge Bar side view



**Figure 10:** Series 2 Nudge Bar side view







**WORLD'S BEST  
ALLOY BULLBARS**

**East Coast Bullbars (ECB Pty Ltd)**

Tel: 07 3897 5700

Fax: 07 3283 1168

ecb@ecb.com.au www.ecb.com.au

29 Snook St  
Clontarf QLD 4019  
Australia

Po Box 122  
Margate QLD 4019  
Australia

## **We value your comments**

Dear Fitter,

ECB would like to know how you went with the installation of this product. We value your comment and may need to contact you to clarify some details so please complete your contact details clearly.

We would appreciate if you could complete as many of the following details as possible.

<b>Your Name:</b>	<b>Your contact No.</b>
<b>Product Part No.</b>	<b>Product Invoice No.</b>
<b>Product Description:</b>	<b>Make, model, and year of vehicle:</b>
<b>Product Work Order No.</b>	<b>Company your from/Company product purchased from:</b>

**Date of Fitment:** \_\_\_\_/\_\_\_\_/\_\_\_\_

Was the fitting hardware supplied complete?

Yes

☐

No

☐

If no what was not supplied

---

---

---

Did the installation go well?

Yes

☐

No

☐

Please provide comments

---

---

---

Please draw diagrams if you need to.

**Post to**

Reply Paid 122

PO Box 122

Margate QLD 4019

**Fax to**

(07) 3283 1168







WORLD'S BEST  
ALLOY BULLBARS

East Coast Bullbars (ECB Pty Ltd)

Tel: 07 3897 5700

Fax: 07 3283 1168

ecb@ecb.com.au www.ecb.com.au

29 Snook St  
Clontarf QLD 4019  
Australia

Po Box 122  
Margate QLD 4019  
Australia

## DESPATCH CHECKLIST NBF37SY, NB6F37SY

Work Order #		<b>See other side off this page for photos of all mounts</b>
Finish:		
Transport:		
Due Date:		

OC.....1 – Pair Steel mounting brackets.

BK.....1 – Bolt Kit.



Is this product “the best it can be” Yes \_\_\_\_\_ / \_\_\_\_\_  
Wrapper's initials / Checker initials

If NO fix before continuing

All parts checked and completed by:

Nut and bolts: \_\_\_\_\_ Date \_\_/\_\_/\_\_

Order control: \_\_\_\_\_ Date \_\_/\_\_/\_\_

Final wrap check: \_\_\_\_\_ Date \_\_/\_\_/\_\_



**WORLD'S BEST  
ALLOY BULLBARS**

**East Coast Bullbars (ECB Pty Ltd)**

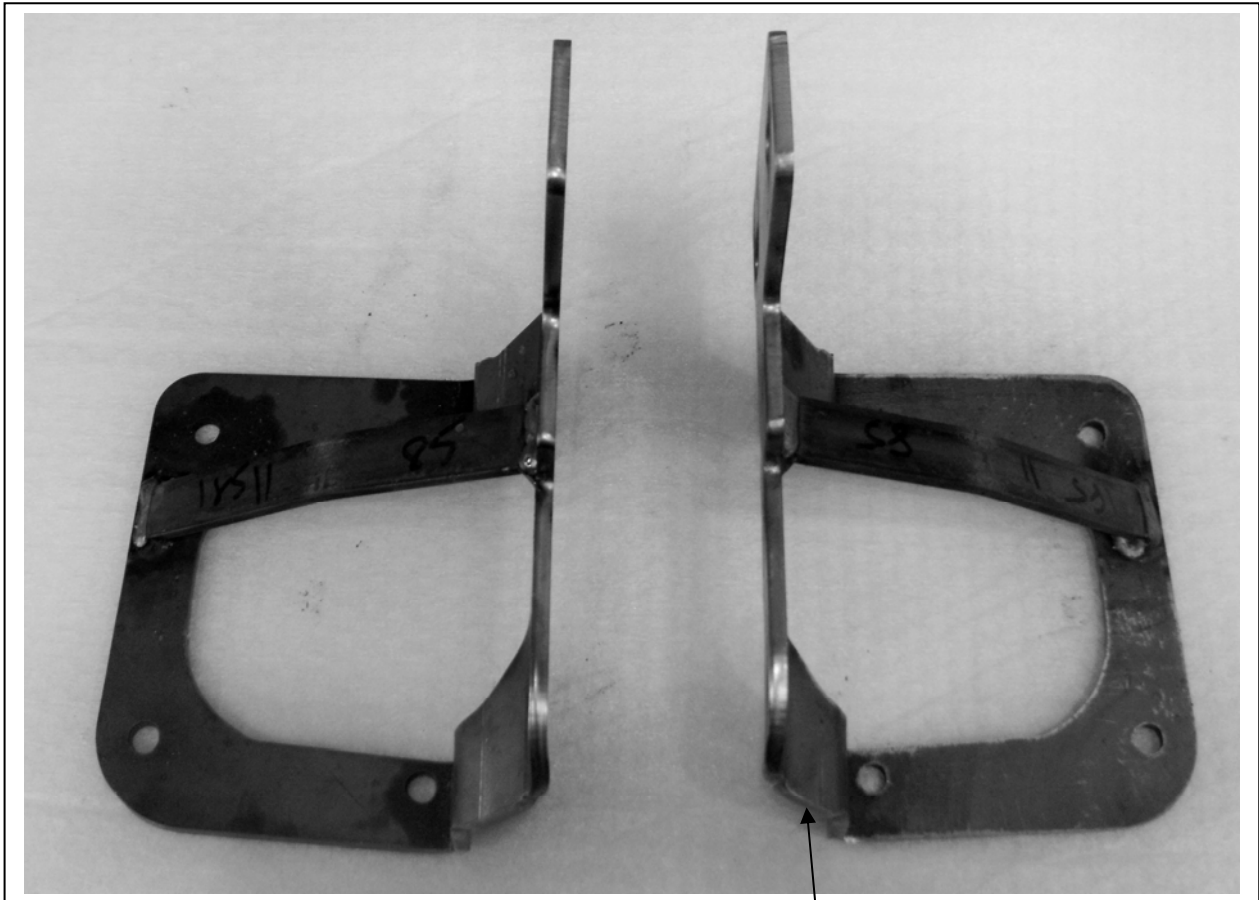
Tel: 07 3897 5700

Fax: 07 3283 1168

ecb@ecb.com.au www.ecb.com.au

29 Snook St  
Clontarf QLD 4019  
Australia

Po Box 122  
Margate QLD 4019  
Australia



**Fitting times:**

1. 1 min
2. 2 min
3. 5 min
4. 10 min
5. 1 min
6. 5 min
7. 10 min
8. 8 min
9. 2 min
10. 2 min
11. 5 min
12. 5 min
13. 8 min
14. 5 min
15. 8 min
16. 5 min

**NOTE: Mount has offset to  
forward facing section.**

**Total time = 82mins + 9 mins to read = 91mins**