



**WORLD'S BEST
ALLOY BULLBARS**

East Coast Bullbars (ECB Pty Ltd)

Tel: 07 3897 5700

Fax: 07 3283 1168

ecb@ecb.com.au www.ecb.com.au

29 Snook St
Clontarf QLD 4019
Australia

Po Box 122
Margate QLD 4019
Australia

NBR55SY / NB6R55SY

REPLACES: 23.02.06

REVISED: 24.07.10

FITTING INSTRUCTIONS

LANDROVER DISCOVERY 3 04/05-09/09 76mm NUDGE BAR AND 63mm SERIES 2 NUDGE BAR VEHICLE FRONTAL PROTECTION SYSTEM (VFPS) FOR AIR BAG & ADR COMPLIANT VEHICLES

Check installation hardware before commencing.

1. Remove one PK self-tapper (each side) from bottom of inner guard to bumper cover. Remove 1 castle head screw (each side) from lower bumper cover. **See figure 1.**
2. Doing one side at a time, turn wheel full lock outwards to access chassis.
3. Enlarge existing hole in chassis for 3/8 x 1 ½ bolt on wire to fit through. **See figure 2.** Use die grinder or similar. Blow all fillings from vehicle and **treat exposed metal with a rust inhibitor.**
4. Bend wire on 3/8 x 1 ½ bolt (supplied) to suit. Feed in through enlarged hole and out through original forward hole on chassis. **See figure 3**
5. Fit steel mounting bracket (supplied) to 3/8 x 1 ½ bolt, use 3/8 flat washer, spring washer and nut (supplied) **FINGER TIGHTEN ONLY.** Fit angle section of steel mounting bracket to existing chassis holes. For the outer hole, feed 3/8 x 1 ¼ bolt with flat washer (supplied) through angle and up into chassis, use 3/8 flat washer, spring washer and nut (supplied) inside chassis. **FINGER TIGHTEN ONLY.** **See figure 4** –Ensure bolt and flat washer only are used. Feed as indicated – otherwise bolt head will foul on protection bar. Feed 3/8 nut with flat washer and 250mm wire (supplied) into chassis to align with inner chassis hole. Use 3/8 x 1 ¼ bolt with flat washer and spring washer (supplied). **See figures 5 and 6**
NOTE: Push plastic inner guard clear to access.
6. Repeat for other side.
7. Straighten wheels. Align steel mounting brackets square to vehicle and parallel with each other. Ensure protection bar will mount on outside of steel mounting brackets. **NOTE:** On certain vehicles the body may be offset to the chassis - Slot holes for sideways adjustment are provided on steel mounting brackets – In this instance a 6mm horse shoe spacer to go between the chassis and the steel mounting bracket is supplied. Usually required on passenger side. **See figure 7. TIGHTEN LOWER BOLTS/NUTS FIRST – THEN SIDE CHASSIS BOLTS. See figure 8.** Crimp wire on bolts tight around chassis to avoid any rattling and or vibration – cut off excess.
8. Refit PK screws to inner guards and castle head screws to lower bumper cover
9. Attach protection bar to outside of steel mounting brackets. Use 3/8 x 1 ½ bolts and washers on wire (supplied) to access front holes. Use 3/8 x 1 ½ bolts, nuts and washers (supplied) for rear holes. **FINGER TIGHTEN ONLY.**
10. Align protection bar with vehicle. **See figures 9 and 11** for front views and **figures 10 and 12** for side views. **TIGHTEN ALL BOLTS/NUTS.**
11. Bend excess wire around tube tightly, so as to avoid any rattling and/or vibration. Trim off excess wire.

ENSURE NUMBER PLATE IS CLEARLY VISABLE



**WORLD'S BEST
ALLOY BULLBARS**

East Coast Bullbars (ECB Pty Ltd)

Tel: 07 3897 5700

Fax: 07 3283 1168

ecb@ecb.com.au www.ecb.com.au

29 Snook St
Clontarf QLD 4019
Australia

Po Box 122
Margate QLD 4019
Australia

Note: When fitting/refitting the licence plate to the vehicle, ensure there is no obstruction to licence plate vision in accordance with local authorities. If required relocate licence plate to an alternate location.

Further VFPS Notes:

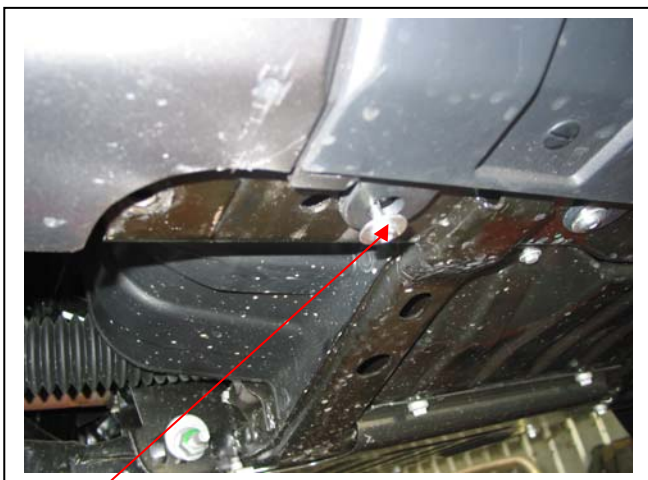
- a) Do not attach VFPS to the vehicle using anchorages not intended for this purpose (e.g. engine mounting bolts).
- b) Do not use this product for any vehicle make or model, other than those specified by the VFPS manufacturer.
- c) Do not remove the plaque or label from the VFPS.
- d) Do not modify the structure of the VFPS in any way.
- e) No accessory or fitment should project forward of the VFPS forward profile.
- f) **ENSURE THESE INSTRUCTIONS ARE LEFT WITH VEHICLE OWNER AND/OR OPERATOR.**

IMPORTANT INFORMATION

Periodically check bolts and nuts for correct tightness, especially if travelling on rough roads

FITTING KIT

2 – Steel mounting brackets.	4 – 3/8 x 1¼ bolts.
2 – 3/8 x 1 ½ bolts with 300mm wire only.	8 – 3/8 nuts.
2 – 3/8 x 1 ½ bolts and washers with 300mm wire.	2 – 3/8 nuts/washers with 250 mm wire.
2 – 3/8 x 1 ½ bolts.	14 – 3/8 flat washers.
1 – 50x50x6 mm alloy horse shoe spacer.	10 – 3/8 spring washers.



Castle head screw **Figure 1 – Drivers side shown**



Figure 2 – Drivers side shown



**WORLD'S BEST
ALLOY BULLBARS**

East Coast Bullbars (ECB Pty Ltd)

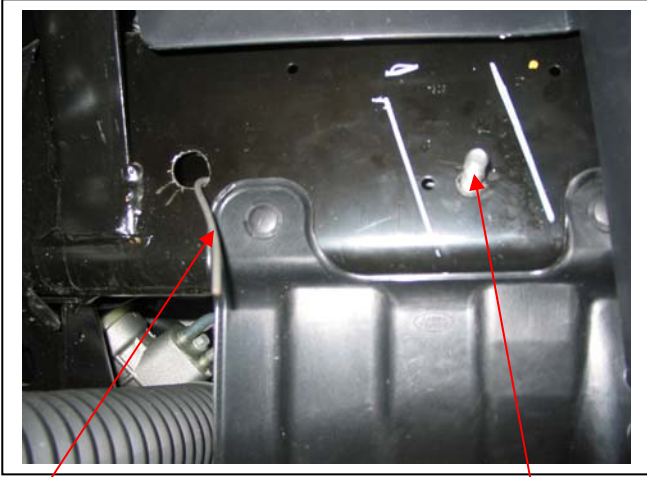
Tel: 07 3897 5700

Fax: 07 3283 1168

ecb@ecb.com.au www.ecb.com.au

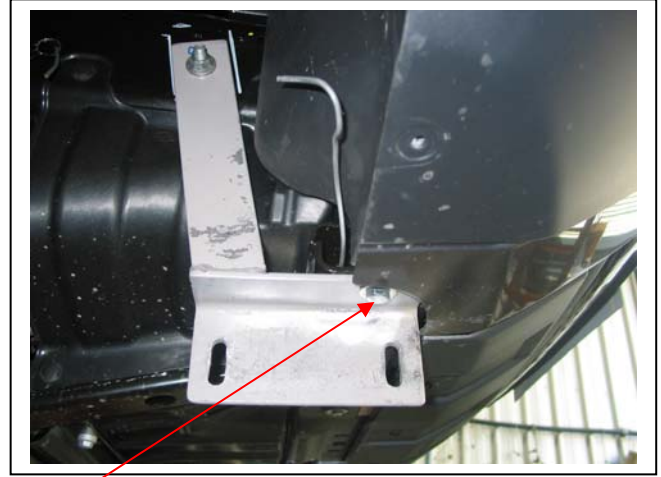
29 Snook St
Clontarf QLD 4019
Australia

Po Box 122
Margate QLD 4019
Australia

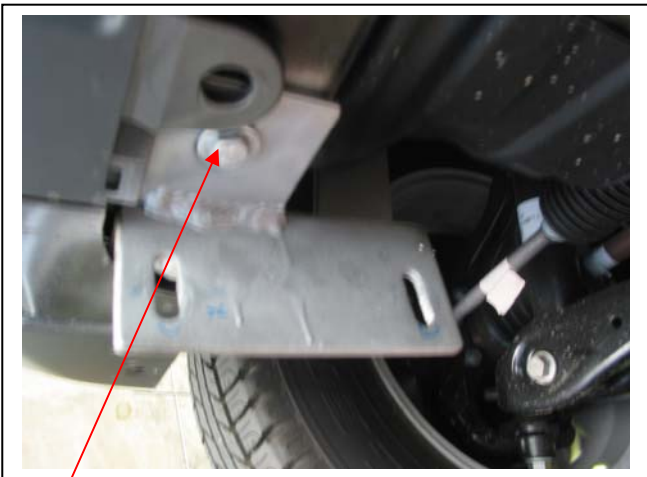


Wire

Figure 3 3/8 x 1 1/2 bolt



3/8 x 1 1/4 **Figure 4** – Drivers side shown



3/8 x 1 1/4 **Figure 5** – Drivers side shown
inner bolt

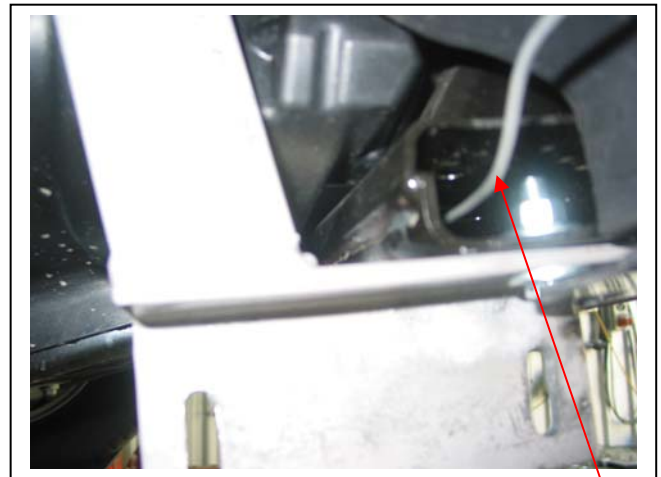


Figure 6 – Drivers side shown Nut / wire

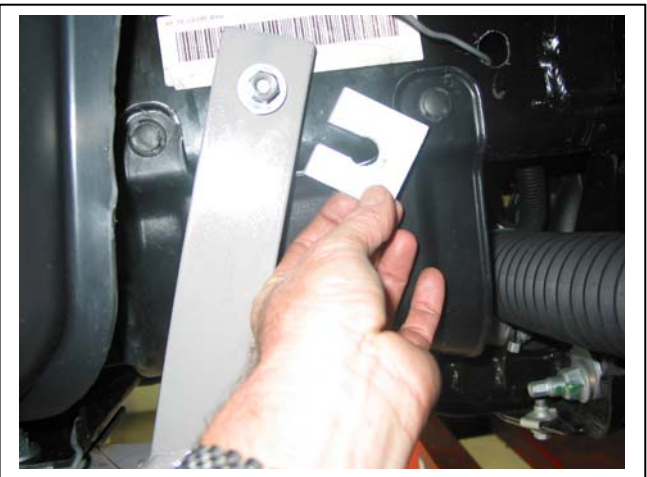


Figure 7 – Passenger side shown
Slide horse shoe spacer between steel mounting
bracket and chassis



Align steel mounting brackets

Figure 8



**WORLD'S BEST
ALLOY BULLBARS**

East Coast Bullbars (ECB Pty Ltd)

Tel: 07 3897 5700

Fax: 07 3283 1168

ecb@ecb.com.au www.ecb.com.au

29 Snook St
Clontarf QLD 4019
Australia

Po Box 122
Margate QLD 4019
Australia



Figure 9 – 76mm Nudge Bar front view shown



Figure 10 – 76mm Nudge Bar side view shown



Figure 11 – 63mm Series 2 Nudge Bar front view shown



Figure 12 – 63mm Series 2 Nudge Bar side view shown



**WORLD'S BEST
ALLOY BULLBARS**

East Coast Bullbars (ECB Pty Ltd)

Tel: 07 3897 5700

Fax: 07 3283 1168

ecb@ecb.com.au www.ecb.com.au

29 Snook St
Clontarf QLD 4019
Australia

Po Box 122
Margate QLD 4019
Australia

We value your comments

Dear Fitter,

ECB would like to know how you went with the installation of this product. We value your comment and may need to contact you to clarify some details so please complete your contact details clearly.

We would appreciate if you could complete as many of the following details as possible.

Your Name:	Your contact No.
Product Part No.	Product Invoice No.
Product Description:	Make, model, and year of vehicle:
Product Work Order No.	Company your from/Company product purchased from:

Date of Fitment: ____/____/____

Was the fitting hardware supplied complete?

Yes

No

If no what was not supplied

Did the installation go well?

Yes

No

Please provide comments

Please draw diagrams if you need to.

Post to
Reply Paid 122
PO Box 122
Margate QLD 4019

Fax to
(07) 3283 1168



**WORLD'S BEST
ALLOY BULLBARS**

East Coast Bullbars (ECB Pty Ltd)

Tel: 07 3897 5700

Fax: 07 3283 1168

ecb@ecb.com.au www.ecb.com.au

29 Snook St
Clontarf QLD 4019
Australia

Po Box 122
Margate QLD 4019
Australia



WORLD'S BEST
ALLOY BULLBARS

East Coast Bullbars (ECB Pty Ltd)

Tel: 07 3897 5700

Fax: 07 3283 1168

ecb@ecb.com.au www.ecb.com.au

29 Snook St
Clontarf QLD 4019
Australia

Po Box 122
Margate QLD 4019
Australia

DESPATCH CHECKLIST NBR55SY / NB6R55SY

Work Order #	
Finish:	
Transport:	
Due Date:	

- 2 – Steel mounting brackets.
- 1 – Bolt Kit.

**See other side of
this page for
photos of all
mounts**



Is this product “the best it can be” Yes _____ / _____
Wrapper's initials / Checker initials
 If **NO** fix before continuing

All parts checked and completed by:

Nut and bolts: _____ Date __/__/__

Order control: _____ Date __/__/__

Final wrap check: _____ Date __/__/__



**WORLD'S BEST
ALLOY BULLBARS**

East Coast Bullbars (ECB Pty Ltd)

Tel: 07 3897 5700

Fax: 07 3283 1168

ecb@ecb.com.au www.ecb.com.au

29 Snook St
Clontarf QLD 4019
Australia

Po Box 122
Margate QLD 4019
Australia

