



**WORLD'S BEST
ALLOY BULLBARS**

East Coast Bullbars (ECB Pty Ltd)

Tel: 07 3897 5700

Fax: 07 3283 1168

ecb@ecb.com.au www.ecb.com.au

29 Snook St
Clontarf QLD 4019
Australia

Po Box 122
Margate QLD 4019
Australia

MI41SY

REPLACES: 00.00.00

REVISED: 19.01.17

FITTING INSTRUCTIONS

IVECO DAILY 4x4 9/16 ON WINCH COMPATIBLE MIDI TUBE BAR VEHICLE FRONTAL PROTECTION SYSTEM (VFPS) FOR AIR BAG & ADR COMPLIANT VEHICLES

Check installation hardware before commencing.

1. From under guard, remove one 10mm head bolt (per side) from above axle and four T30 torx head screw and nuts from rear and underside of bumper (per side) from front section of inner wheel arch. Remove front section of inner wheel arch only.
2. Unbolt two 15mm head nuts (per side) from rear of bumper sides. **See figure 1.**
3. Disconnect lights.
4. Support front of bumper and remove four 10mm Allen head bolts and two T45 torx head bolts. **See figure 2.** Remove bumper.
5. Remove six 15mm head bolts from front of underbelly guard. Allow to hang.
6. Remove front most bolts from steering box and tow hook.
7. Using 3/16 drill bit, carefully drill out rivets to separate sides of bumper from centre. **See figure 3. Blow filings clear and treat all exposed metal with a rust inhibitor.**
8. Attach sides of bumper to ECB Protection bar using 3/16 rivets and small washers (supplied). Place rivet through hole in ECB protection bar and bumper end from inside. Install 3/16 flat washer (supplied) over end of rivet then rivet into position. **See figure 4.** Note: the tighter the flat washer is held onto the rivet, the better the join.
9. Install ECB winch frame (supplied) onto ends of chassis using two M16 x 50 bolts, spring washers and flat washers (supplied) (per side) into chassis ends, two M16 x 60 bolts (supplied) into previously holes in steering box and tow hook and two 3/8 x 5 bolt, flat washer, two 6mm spacer washers, spring washer and nuts (supplied) under tow hook and steering box bolts. **See figure 5.**
10. Refit underbelly guard using original bolts to front of ECB winch frame. **Finger tighten only.** NOTE: Some forward adjustment can be obtained from the bolts in the lower rear of the guard.
11. Align ECB winch frame centrally to the body of the vehicle. **Tighten all bolts.**
12. Install winch into ECB winch frame using bolts supplied with winch. Attach control box to winch using two worm drive hose clamps (supplied) for Warn control box mount and Mean Mother control box mount as per instructions supplied with winch. Fit fairlead roller to front of ECB winch frame using bolts supplied with winch. **Finger tighten only.**
13. Attach 6mm clip lock trim (supplied) to edge of fairlead roller cut out.



**WORLD'S BEST
ALLOY BULLBARS**

East Coast Bullbars (ECB Pty Ltd)

Tel: 07 3897 5700

Fax: 07 3283 1168

ecb@ecb.com.au www.ecb.com.au

29 Snook St
Clontarf QLD 4019
Australia

Po Box 122
Margate QLD 4019
Australia

14. Install ECB protection bar to front of winch frame using six M12 x 40 bolts, flat washers, spring washers and nuts (supplied). Place nuts to inside for best appearances. Should sides of bumper not realign with original mountings some adjustment may be required. Refit to side mountings using original nuts.
15. Align protection bar and **tighten all bolts. See figures 6 and 7.**
16. Connect lights.
17. Refit front inner guards using original equipment bolts.
18. Using hinge base as a guide, drill three 6mm holes in front face of channel. Assemble hinge front to rear using two M6 x 20 bolts, flat washers and nuts (supplied). Install to Protection bar using three M6 x 20 bolts, flat washers and nyloc nuts (supplied).

ENSURE NUMBER PLATE IS CLEARLY VISABLE

Note: When fitting/refitting the licence plate to the vehicle, ensure there is no obstruction to licence plate vision in accordance with local authorities. If required relocate licence plate to an alternate location.

Further VFPS Notes:

- a) Do not attach VFPS to the vehicle using anchorages not intended for this purpose (e.g. engine mounting bolts).
- b) Do not use this product for any vehicle make or model, other than those specified by the VFPS manufacturer.
- c) Do not remove the plaque or label from the VFPS.
- d) Do not modify the structure of the VFPS in any way.
- e) No accessory or fitment should project forward of the VFPS forward profile.
- f) **ENSURE THESE INSTRUCTIONS ARE LEFT WITH VEHICLE OWNER AND/OR OPERATOR.**

IMPORTANT INFORMATION

Periodically check bolts and nuts for correct tightness, especially if travelling on rough roads

FITTING KIT

| | |
|--|---|
| 1 – ECB winch mount | 6 – M12 nuts |
| 1 – Warn control box mount (WIN CONT B4MS) | 2 – 3/8 x 5 bolts |
| 1 – Mean Mother control box mount (MOTHERCB B4MS) | 2 – 3/8 nuts |
| 4 – 6mm steel spacer washers (BI41SY A6MS) | 4 – M10 flat washer |
| 1 – Number plate hinge base (number hin base a4ms) | 2 – M10 spring washers |
| 1 – Number plate hinge front (number hin lge a4ms) | 5 – M6 x 20 bolts |
| 4 – M16 x 2 X 50 bolts | 10 – M6 flat washers |
| 2 – M16 x 1.5 X 60 bolts | 5 – M6 nyloc nuts |
| 6 – M16 flat washers | 26 – 4.8 (3/16) x 6.4(1/4) blind rivets |
| 6 – M16 spring washer | 26 – 3/16 x 1/2 washer |
| 6 – M12 x 1.75 x 40 bolts | 1 – 1000mm length 6mm clip lock trim |
| 12 – M12 flat washers | 4 – Fog light trims |
| 6 – M12 spring washers | |



**WORLD'S BEST
ALLOY BULLBARS**

East Coast Bullbars (ECB Pty Ltd)

Tel: 07 3897 5700

Fax: 07 3283 1168

ecb@ecb.com.au www.ecb.com.au

29 Snook St
Clontarf QLD 4019
Australia

Po Box 122
Margate QLD 4019
Australia

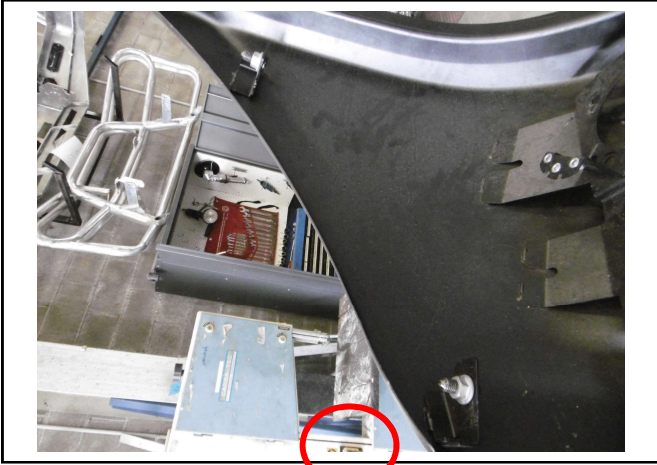


Figure 1

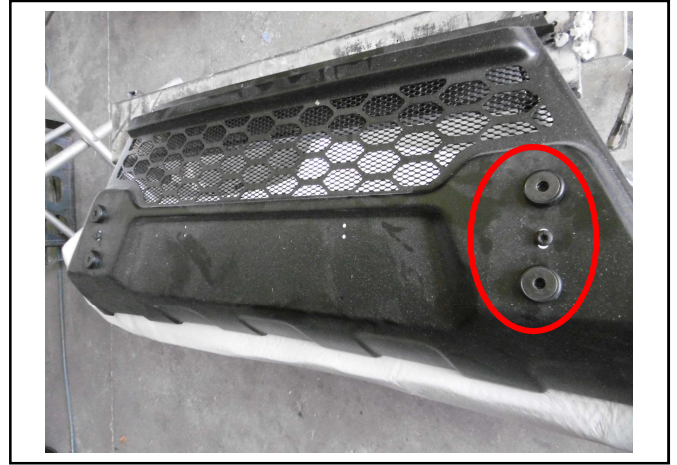


Figure 2



Figure 3

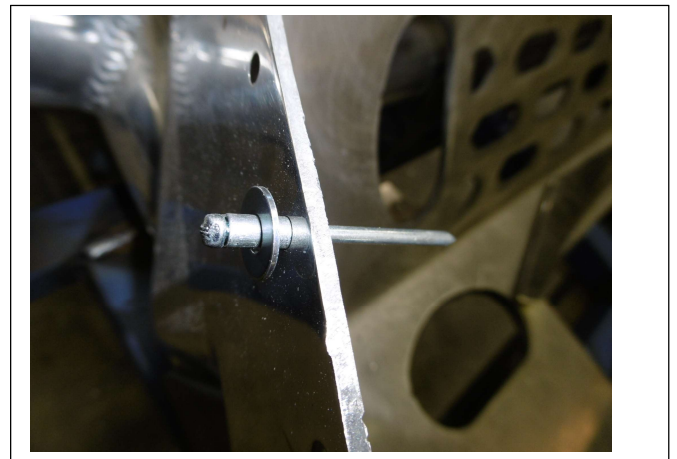


Figure 4



Figure 5



Figure 6



**WORLD'S BEST
ALLOY BULLBARS**

East Coast Bullbars (ECB Pty Ltd)

Tel: 07 3897 5700

Fax: 07 3283 1168

ecb@ecb.com.au www.ecb.com.au

29 Snook St
Clontarf QLD 4019
Australia

Po Box 122
Margate QLD 4019
Australia



Figure 7



**WORLD'S BEST
ALLOY BULLBARS**

East Coast Bullbars (ECB Pty Ltd)

Tel: 07 3897 5700

Fax: 07 3283 1168

ecb@ecb.com.au www.ecb.com.au

29 Snook St
Clontarf QLD 4019
Australia

Po Box 122
Margate QLD 4019
Australia

We value your comments

Dear Fitter,

ECB would like to know how you went with the installation of this product. We value your comment and may need to contact you to clarify some details so please complete your contact details clearly.

We would appreciate if you could complete as many of the following details as possible.

| | |
|-------------------------------|--|
| Your Name: | Your contact No. |
| Product Part No. | Product Invoice No. |
| Product Description: | Make, model, and year of vehicle: |
| Product Work Order No. | Company your from/Company product purchased from: |

Date of Fitment: ___ / ___ / ___

Was the fitting hardware supplied complete?

Yes

No

If no what was not supplied

Did the installation go well?

Yes

No

Please provide comments

Please draw diagrams if you need to.

Post to
Reply Paid 122
PO Box 122
Margate QLD 4019

Fax to
(07) 3283 1168



**WORLD'S BEST
ALLOY BULLBARS**

East Coast Bullbars (ECB Pty Ltd)

Tel: 07 3897 5700

Fax: 07 3283 1168

ecb@ecb.com.au www.ecb.com.au

29 Snook St
Clontarf QLD 4019
Australia

Po Box 122
Margate QLD 4019
Australia



WORLD'S BEST
ALLOY BULLBARS

East Coast Bullbars (ECB Pty Ltd)

Tel: 07 3897 5700

Fax: 07 3283 1168

ecb@ecb.com.au www.ecb.com.au

29 Snook St
Clontarf QLD 4019
Australia

Po Box 122
Margate QLD 4019
Australia

DESPATCH CHECKLIST MI41SY

| | | |
|--------------|--|---|
| Work Order # | | See other side of this page for photos of all mounts |
| Finish: | | |
| Transport: | | |
| Due Date: | | |

OC.....1 – Steel winch bracket.

BK.....1 – Warn control box mount.

BK.....1 – Mean Mother control box mount.

BK.....1 – number plate hinge base (number_hin_base_a4ms)

BK.....1 – number plate hinge front (number_hin_lgea4ms)

BK.....1 – Bolt Kit.

BK.....1 – 1000mm length 6mm clip lock

BK.....4 – Fog light trims

_____/_____
Wrapper's initials / Checker initials



Is this product “the best it can be” Yes

If NO fix before continuing

All parts checked and completed by:

Nut and bolts: _____ Date __/__/__

Order control: _____ Date __/__/__

Final wrap check: _____ Date __/__/__



**WORLD'S BEST
ALLOY BULLBARS**

East Coast Bullbars (ECB Pty Ltd)

Tel: 07 3897 5700

Fax: 07 3283 1168

ecb@ecb.com.au www.ecb.com.au

29 Snook St
Clontarf QLD 4019
Australia

Po Box 122
Margate QLD 4019
Australia



/_____
Wrapper's initials / Checker initials