



**WORLD'S BEST
ALLOY BULLBARS**

East Coast Bullbars (ECB Pty Ltd)

Tel: 07 3897 5700

Fax: 07 3283 1168

ecb@ecb.com.au www.ecb.com.au

29 Snook St
Clontarf QLD 4019
Australia

Po Box 122
Margate QLD 4019
Australia

MHO60SY / NB6HO60SY / NBHO60SY

REPLACES: 00.00.00

REVISED: 12.01.15

FITTING INSTRUCTIONS

HONDA CRV 6-13on

MID TUBE BAR, SERIES 2 NUDGE BAR & 76mm NUDGE BAR VEHICLE FRONTAL PROTECTION SYSTEM (VFPS) FOR AIR BAG & ADR COMPLIANT VEHICLES

Check installation hardware before commencing.

Special Note: Ensure battery is disconnected before any electrical work is attempted on this vehicle.

1. Lift bonnet.
2. Remove front four plastic push pull clips from grille between headlamps. Gently pull grill away from vehicle. Remove four plastic push pull clips from filler panel under grille, between headlights. Allow to hang. Slide a large flat blade screwdriver between grille clips and headlight. Lever clips to remove grille and top of bumper from headlights. **See figure 1.** Clips are designed to and will break. Grille is removed with bumper.
3. Remove four plastic push pull clips from under front centre of bumper cover, one 10mm head bolts and one push pull plastic clip under side.
4. Remove two plastic push pull clip and one PK screws from wheel arch at rear of flare (per side). Pull bottom of plastic bumper down to unclip bottom of flare. Slide hand between liner and bumper to release two plastic clips on rear of flare.
5. Remove one PK screw (per side) from behind flare. Gently pull sides of bumper away from guards to release the plastic clips behind. Disconnect fog lamps, bumper sensors and headlight washers if fitted on removal.
6. Die grind front holes and top holes in chassis rail large enough to accept a M10 x 35 bolt and washer on 300mm wire. **See figure 2 and 3. NOTE:** Blow all filings clear and treat all exposed metal with a rust inhibitor or similar.
7. Gently hammer ends of chassis rail flat. **See figure 4.**
8. Mark lower steel splash guards as per photos to allow mount fitment. **See figure 5.** Remove and trim lower steel splash guards. **NOTE:** Blow all filings clear and treat all exposed metal with a rust inhibitor or similar. Refit to vehicle using original bolts.
9. Place M10 x 35 bolts on wire and washer (supplied) through holes in bottom of chassis. Fit ECB steel mounting bracket (supplied) to bolt using M10 nut, flat and spring washers (supplied). Using mount as a guide, drill top holes in mount to 10mm. **NOTE:** Blow all filings clear and treat all exposed metal with a rust inhibitor or similar.
10. Feed two M10 x 35 bolts and washers on 300mm wire (supplied) into large holes in chassis and through remaining holes in steel mounting bracket. **See figure 6.** Secure using M10 nut, flat and spring washers (supplied) **FINGER TIGHTEN ONLY.**
11. Install two M10 x 30 bolts, flat washers, spring washers and nuts into bumper support mounts.
12. Using the mounting bracket as a guide, trim air dam lower section using a sharp knife or similar to allow air dams to fit above mount. **See figure 7 and 8.**
13. Use a sharp knife or similar to cut outer area of lower grille. **See figure 9.**



**WORLD'S BEST
ALLOY BULLBARS**

East Coast Bullbars (ECB Pty Ltd)

Tel: 07 3897 5700

Fax: 07 3283 1168

ecb@ecb.com.au www.ecb.com.au

29 Snook St
Clontarf QLD 4019
Australia

Po Box 122
Margate QLD 4019
Australia

14. **TIGHTEN ALL BOLTS.** Trim all wire and tuck wire clear of all possible obstructions.
15. On centre two parking sensors, cut wiring half way between the sensor and the wiring harness. Bare wiring harness and ends of wires to allow joining of wiring. Using Solder Joiners and 5 core wiring (supplied), rejoin parking sensor too original equipment wiring harness. Ensure correct joining of colour to colour. NOTE: solder joiners require a cigarette lighter only to shrink plastic coating and melt joiner solder. CAUTION: Do not overheat joiners as overheating will cause plastic on joiner to split.
16. Remove grille from bumper, taking care not to damage remaining clips. Remove two lower centre grille clips and fit to bumper near headlights. **See figure 10 and 11.** Refit from bumper as per reverse of steps 2 to 5. Do not refit grille at this time.
17. Taking care not to damage vehicle, lift ECB protection bar up to steel mounting brackets. Attach using two M10 x 40 bolts from the inside of the mount with flat and spring washers and nuts (supplied) (per side) to the outside. **FINGER TIGHTEN ONLY.**
18. Align ECB protection bar with vehicle. See **figures 12, 14 and 16** for front views and **figures 13, 15 and 17** for side views. **TIGHTEN ALL BOLTS.**
19. Ensure parking sensors have silicon ring around edge of sensor area of part. Gently place sensor into hole in ECB protection bar and twist into mounting bracket in rear of protection bar. Make sure sensor silicon ring is not folded or crimped in any way and is holding sensor away from protection bar. Connect sensor to wiring harness. Run zip tie (supplied) through both holes in mounting bracket from wiring side on mounting, under rear of sensor (wired connector end) and back through zip end of tie. Ensure sensor is sitting centrally in hole. Alloy sensor mount can be bent to suit. **Do not over tighten.**
20. Refit filler panel and grille to vehicle.

ENSURE NUMBER PLATE IS CLEARLY VISABLE

Note: When fitting/refitting the licence plate to the vehicle, ensure there is no obstruction to licence plate vision in accordance with local authorities. If required relocate licence plate to an alternate location.

Further VFPS Notes:

- a) Do not attach VFPS to the vehicle using anchorages not intended for this purpose (e.g. engine mounting bolts).
- b) Do not use this product for any vehicle make or model, other than those specified by the VFPS manufacturer.
- c) Do not remove the plaque or label from the VFPS.
- d) Do not modify the structure of the VFPS in any way.
- e) No accessory or fitment should project forward of the VFPS forward profile.
- f) **ENSURE THESE INSTRUCTIONS ARE LEFT WITH VEHICLE OWNER AND/OR OPERATOR.**

IMPORTANT INFORMATION

Periodically check bolts and nuts for correct tightness, especially if travelling on rough roads.

FITTING KIT

1 – ECB Steel mounting brackets.	18 – M10 flat washers.
6 – M10 x 1.5 x 35 bolts and washers on 300mm wire.	12 – M10 spring washers
4 – M10 x 1.5 x 40 bolts.	20 – Water proof Solder joiner
2 – M10 x 1.5 x 30 bolts	2 – 400mm length 2mm 5 core wire
12 – M10 x 1.5 nuts.	



WORLD'S BEST
ALLOY BULLBARS

East Coast Bullbars (ECB Pty Ltd)

Tel: 07 3897 5700

Fax: 07 3283 1168

ecb@ecb.com.au www.ecb.com.au

29 Snook St
Clontarf QLD 4019
Australia

Po Box 122
Margate QLD 4019
Australia

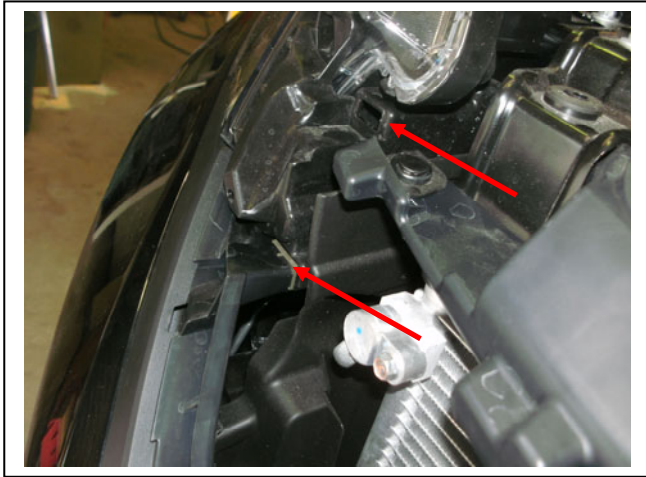


Figure 1 – Driver's side shown. Grille removed for photo

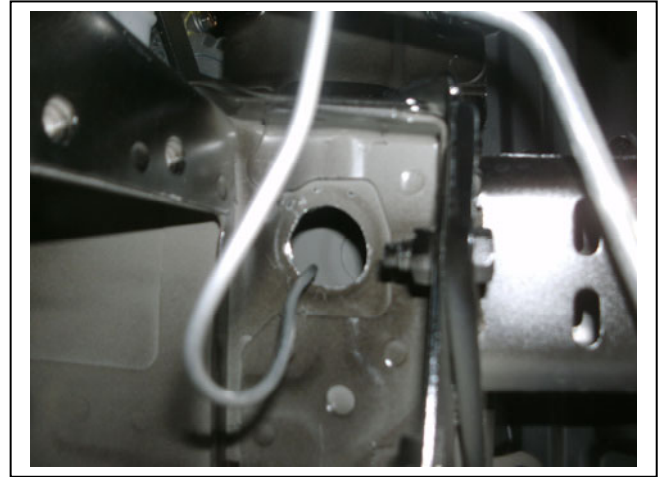


Figure 2 – Top hole

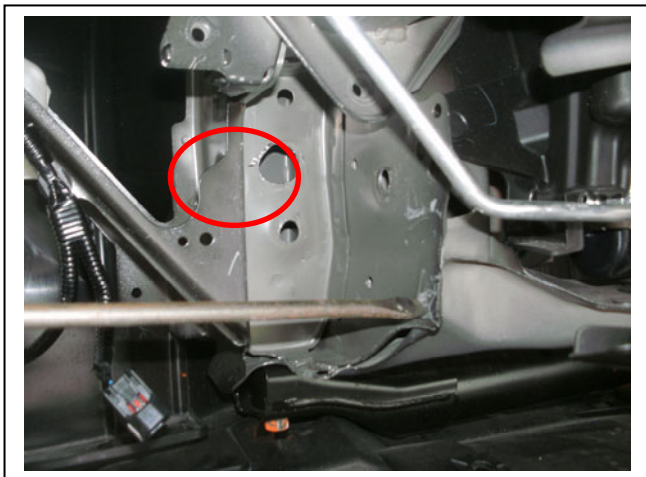


Figure 3 – Front hole

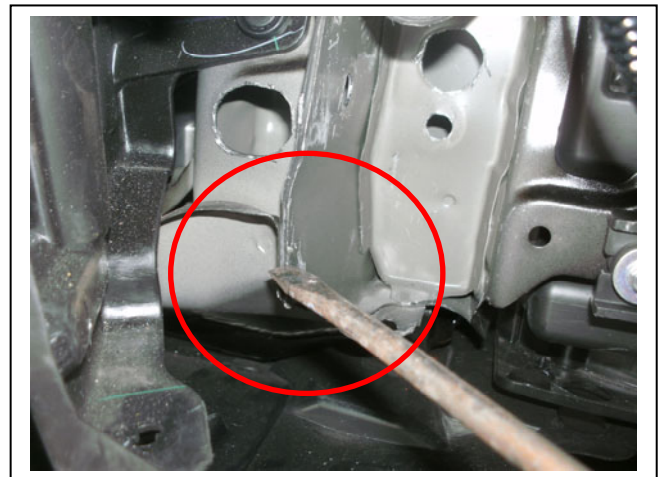


Figure 4 – Pointing to hammered area passengers side shown.



Figure 5 – Steel splash guard trim mark out.

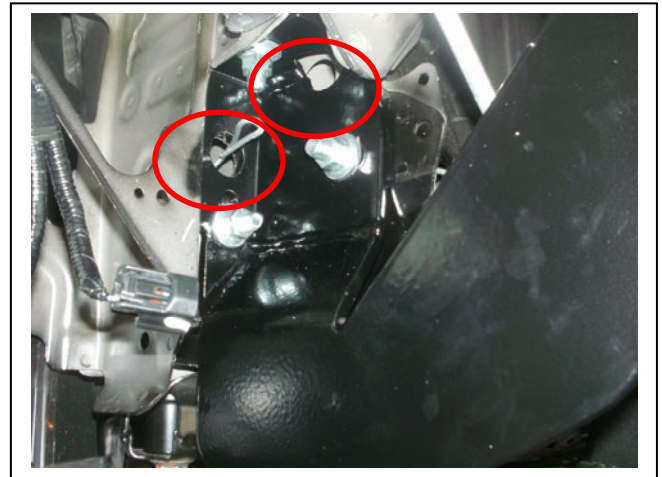


Figure 6 – Holes for placement of bolts on wire.



WORLD'S BEST
ALLOY BULLBARS

East Coast Bullbars (ECB Pty Ltd)

Tel: 07 3897 5700

Fax: 07 3283 1168

ecb@ecb.com.au www.ecb.com.au

29 Snook St
Clontarf QLD 4019
Australia

Po Box 122
Margate QLD 4019
Australia

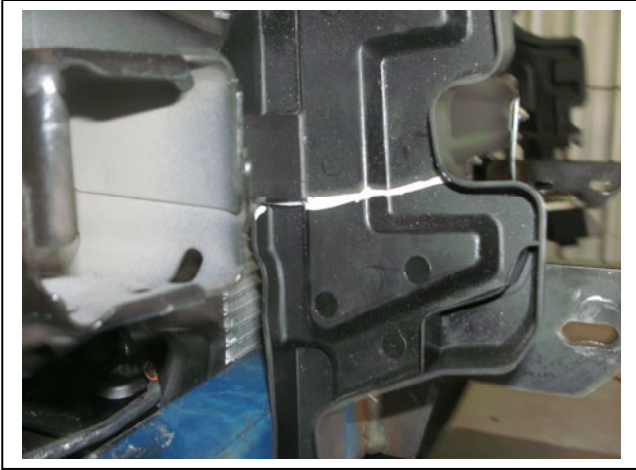


Figure 7 – Trim on drivers side air dam



Figure 8– Trim on Passengers side air dam



Figure 9 – Lower grille removed from bumper for photo

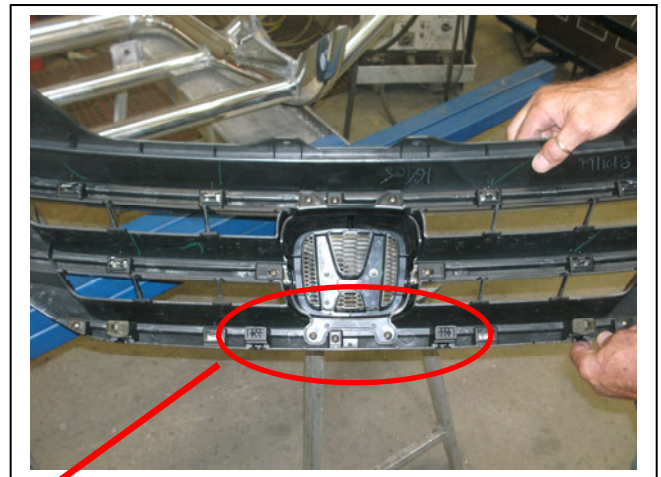


Figure 10 – Remove two lower centre grille clips

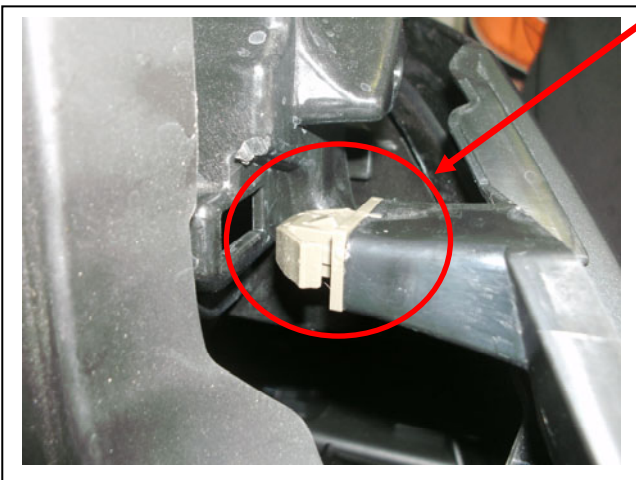


Figure 11



Figure 12



**WORLD'S BEST
ALLOY BULLBARS**

East Coast Bullbars (ECB Pty Ltd)

Tel: 07 3897 5700

Fax: 07 3283 1168

ecb@ecb.com.au www.ecb.com.au

29 Snook St
Clontarf QLD 4019
Australia

Po Box 122
Margate QLD 4019
Australia



Figure 13



Figure 14



Figure 14



Figure 15



Figure 16



**WORLD'S BEST
ALLOY BULLBARS**

East Coast Bullbars (ECB Pty Ltd)

Tel: 07 3897 5700

Fax: 07 3283 1168

ecb@ecb.com.au www.ecb.com.au

29 Snook St
Clontarf QLD 4019
Australia

Po Box 122
Margate QLD 4019
Australia

We value your comments

Dear Fitter,

ECB would like to know how you went with the installation of this product. We value your comment and may need to contact you to clarify some details so please complete your contact details clearly.

We would appreciate if you could complete as many of the following details as possible.

Your Name:	Your contact No.
Product Part No.	Product Invoice No.
Product Description:	Make, model, and year of vehicle:
Product Work Order No.	Company your from/Company product purchased from:

Date of Fitment: ____/____/____

Was the fitting hardware supplied complete?

Yes

No

If no what was not supplied

Did the installation go well?

Yes

No

Please provide comments

Please draw diagrams if you need to.

Post to
Reply Paid 122
PO Box 122
Margate QLD 4019

Fax to
(07) 3283 1168



WORLD'S BEST
ALLOY BULLBARS

East Coast Bullbars (ECB Pty Ltd)

Tel: 07 3897 5700

Fax: 07 3283 1168

ecb@ecb.com.au www.ecb.com.au

29 Snook St
Clontarf QLD 4019
Australia

Po Box 122
Margate QLD 4019
Australia

DESPATCH CHECKLIST

MHO60SY / NB6HO60SY / NBHO60SY

Work Order #	
Finish:	
Transport:	
Due Date:	

- 1 – Steel mounting brackets.
- 1 – Bolt Kit.



Is this product “the best it can be” Yes _____ / _____
Wrapper's initials / Checker initials

If NO fix before continuing

All parts checked and completed by:

Nut and bolts: _____ Date __/__/__

Order control: _____ Date __/__/__

Final wrap check: _____ Date __/__/__



WORLD'S BEST
ALLOY BULLBARS

East Coast Bullbars (ECB Pty Ltd)

Tel: 07 3897 5700

Fax: 07 3283 1168

ecb@ecb.com.au www.ecb.com.au

29 Snook St
Clontarf QLD 4019
Australia

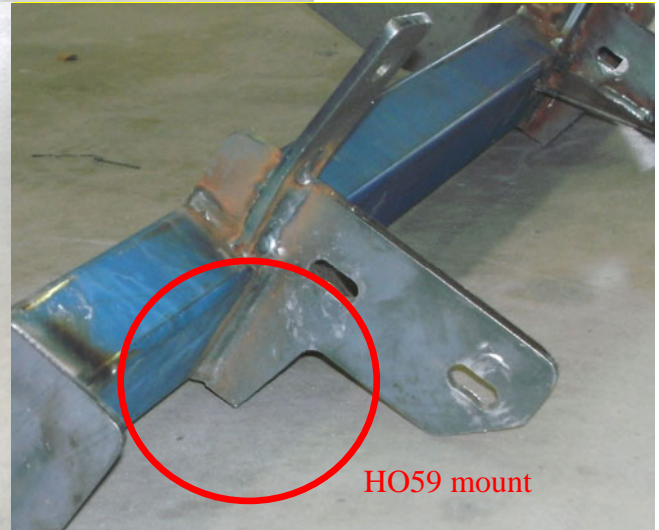
Po Box 122
Margate QLD 4019
Australia



_____/_____
Wrapper's initials / Checker initials



HO60 mount



HO59 mount

Most visible change between HO59 and HO60 steel mount