



**WORLD'S BEST
ALLOY BULLBARS**

East Coast Bullbars (ECB Pty Ltd)

Tel: 07 3897 5700

Fax: 07 3283 1168

ecb@ecb.com.au www.ecb.com.au

29 Snook St
Clontarf QLD 4019
Australia

Po Box 122
Margate QLD 4019
Australia

MHO58SY / NB7HO58SY / NBHO58SY

REPLACES: 17.06.07

REVISED: 17.06.10

FITTING INSTRUCTIONS

HONDA CRV 2/07on MIDI TUBE, 76mm SERIES 2 NUDGE BAR & 76mm NUDGE BAR VEHICLE FRONTAL PROTECTION SYSTEM (VFPS) FOR AIR BAG & ADR COMPLIANT VEHICLES

This product range is designed to fit across two models of the Honda CRV (2/07 to 2/10, and 2/10 on). The model change is noted by a change in the front bumper assembly. See **figures 1 and 2** for variants.

Check installation hardware before commencing.

1. Lift bonnet.
2. Remove front four plastic push pull clips from cover on top of grille area between headlamps.
3. Remove four plastic push pull clips from under front centre of bumper cover and two 10mm head bolts under side.
4. Remove one plastic push pull clip from top rear cover of bumper wing and two PK screws from wheel arch (per side).
5. Gently pull sides of bumper away from guards to release the plastic clips behind. Using a small flat screwdriver, release the two plastic clips from under the headlamps and one plastic clip from rear of grille assembly under headlamp. Disconnect fog lamps if fitted on removal.
6. Die grind front holes in chassis rail large enough to accept a 3/8 x 1 1/2 bolt and washer on 300mm wire. See **figure 3**. **NOTE:** Blow all filings clear and treat all exposed metal with a rust inhibitor or similar.
7. On driver's side, remove wiring from mounting area and relocated to front of bottle. See **figure 4**.
8. Working on one side at a time, remove four bolts from crash can on bumper support. Place 3/8 x 1 1/2 bolt and washer (supplied) through holes in bottom of chassis. Fit ECB steel mounting brackets (supplied) to bolt using 3/8 nut, flat and spring washers (supplied).
9. Feed two 3/8 x 1 1/2 bolts and washers on 300mm wire (supplied) into large holes in chassis and through remaining holes in mount. See **figure 5**. Secure using 3/8 nut, flat and spring washers (supplied) **FINGER TIGHTEN ONLY**.
10. Repeat steps 8 and 9 for the other side on the vehicle. **TIGHTEN ALL BOLTS**.
11. Using the mount as a guide, trim lower splash guard using a sharp knife or similar to allow mounting bracket to come through.
12. For 2/07 to 2/10 models only: Use protective tape to mask front lower section of bumper where mounts will contact. Place bumper in position on vehicle above mounts and mark cut line on bumper. See **figure 6**. Using a jigsaw or a sharp knife, trim 40mm forward, see **figure 7**.
13. **TIGHTEN ALL BOLTS**. Trim all wire and tuck wire clear of all possible obstructions.
14. Refit from bumper as per reverse of steps 2 to 5.



**WORLD'S BEST
ALLOY BULLBARS**

East Coast Bullbars (ECB Pty Ltd)

Tel: 07 3897 5700

Fax: 07 3283 1168

ecb@ecb.com.au www.ecb.com.au

29 Snook St
Clontarf QLD 4019
Australia

Po Box 122
Margate QLD 4019
Australia

15. Taking care not to damage vehicle, lift ECB protection bar up to steel mounting brackets. Steel mounting brackets have two sets of holes per side. Rear holes to fit the 2/07 to 2/10 model, front holes for 02/10 on model. The Midi Tube and Series 2 Nudge bar fit to outside on steel mounts and the 76mm Nudge Bar to inside of steel mounts. Attach using two 3/8 x 1 1/2 bolts and washers on 30mm wire from the inside of the tube with flat and spring washers and nuts (supplied) (per side) to the outside. **FINGER TIGHTEN ONLY.**
16. Align ECB protection bar with vehicle. See **figures 8, 10 and 12** for front views and **figures 9, 11 and 13** for side views for 2/07 to 2/10 model and **figures 14, 16 and 18** for front view and **figures 15,17and 19** for side views of 2/10 on.
17. **TIGHTEN ALL BOLTS.**

ENSURE NUMBER PLATE IS CLEARLY VISABLE

Note: When fitting/refitting the licence plate to the vehicle, ensure there is no obstruction to licence plate vision in accordance with local authorities. If required relocate licence plate to an alternate location.

Further VFPS Notes:

- a) Do not attach VFPS to the vehicle using anchorages not intended for this purpose (e.g. engine mounting bolts).
- b) Do not use this product for any vehicle make or model, other than those specified by the VFPS manufacturer.
- c) Do not remove the plaque or label from the VFPS.
- d) Do not modify the structure of the VFPS in any way.
- e) No accessory or fitment should project forward of the VFPS forward profile.
- f) **ENSURE THESE INSTRUCTIONS ARE LEFT WITH VEHICLE OWNER AND/OR OPERATOR.**

IMPORTANT INFORMATION

Periodically check bolts and nuts for correct tightness, especially if travelling on rough roads

FITTING KIT

1 – Pair ECB Steel mounting brackets.
6 – 3/8 x 1 1/2 bolts and washers on 300mm wire.
4 – 3/8 x 1 1/2 bolts.
10 – 3/8 nuts.
14 – 3/8 flat washers.
10 – 3/8 spring washers.



Figure 1: 02/07 to 02/10 model



Figure 2: 02/10on model



WORLD'S BEST
ALLOY BULLBARS

East Coast Bullbars (ECB Pty Ltd)

Tel: 07 3897 5700

Fax: 07 3283 1168

ecb@ecb.com.au www.ecb.com.au

29 Snook St
Clontarf QLD 4019
Australia

Po Box 122
Margate QLD 4019
Australia



Figure 3 – Driver's side shown



Wiring removed and
relocated with mount fitted

Figure 4

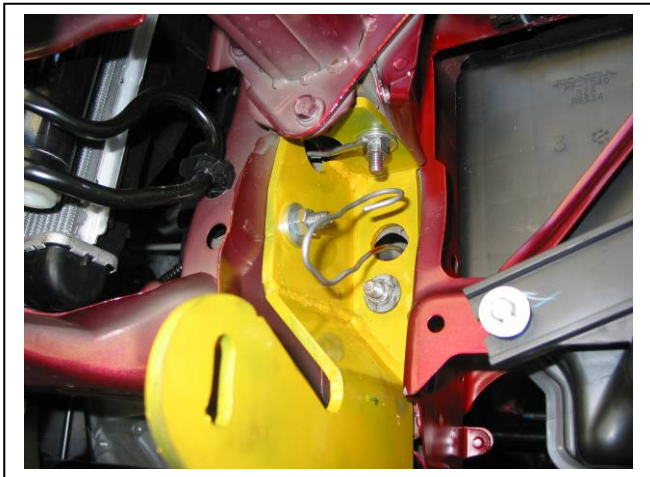


Figure 5 – Passenger side shown



Figure 6 – Marking bumper for trim
(2/07 to 2/10 models only)

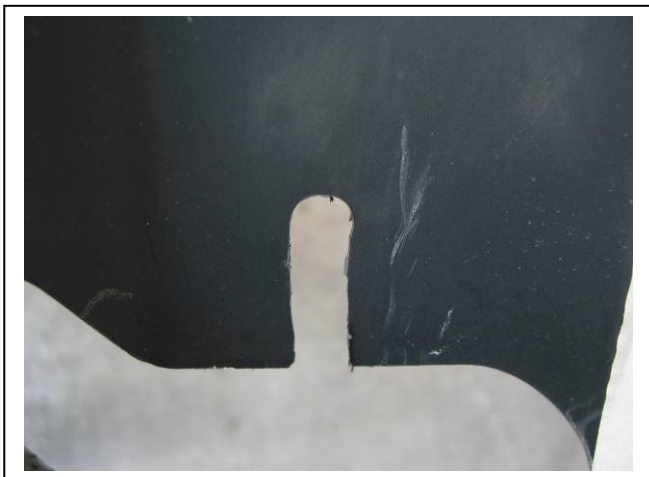


Figure 7 – Finished trim on bumper 02/07 to 2/10
model



Figure 8 – Midi Tube front view shown 2/07 to
2/10 model



**WORLD'S BEST
ALLOY BULLBARS**

East Coast Bullbars (ECB Pty Ltd)

Tel: 07 3897 5700

Fax: 07 3283 1168

ecb@ecb.com.au www.ecb.com.au

29 Snook St
Clontarf QLD 4019
Australia

Po Box 122
Margate QLD 4019
Australia

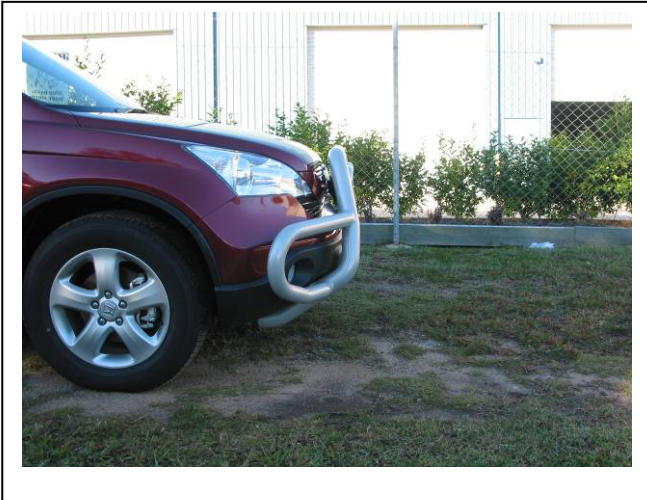


Figure 9 – Midi Tube side view shown 2/07 to 2/10 model



Figure 10 – 76mm Series 2 Nudge Bar front view shown 2/07 to 2/10 model



Figure 11 – 76mm Series 2 Nudge Bar side view shown 2/07 to 2/10 model



Figure 12 – 76mm Nudge Bar front view shown 2/07 to 2/10 model



Figure 13 – 76mm Nudge Bar side view shown 2/07 to 2/10 model



Figure 14 – Midi Tube side view shown 02/10on



East Coast Bullbars (ECB Pty Ltd)

Tel: 07 3897 5700

Fax: 07 3283 1168

ecb@ecb.com.au www.ecb.com.au

WORLD'S BEST
ALLOY BULLBARS

29 Snook St
Clontarf QLD 4019
Australia

Po Box 122
Margate QLD 4019
Australia



Figure 15 – Midi Tube side view shown 02/10on model



Figure 16 – 76mm Series 2 Nudge Bar front view shown 02/10on model



Figure 17 – 76mm Series 2 Nudge Bar side view shown 2/10on model



Figure 18 – 76mm Nudge Bar front view shown 02/10on model



Figure 19 – 76mm Nudge Bar side view shown 02/10on model



**WORLD'S BEST
ALLOY BULLBARS**

East Coast Bullbars (ECB Pty Ltd)

Tel: 07 3897 5700

Fax: 07 3283 1168

ecb@ecb.com.au www.ecb.com.au

29 Snook St
Clontarf QLD 4019
Australia

Po Box 122
Margate QLD 4019
Australia

We value your comments

Dear Fitter,

ECB would like to know how you went with the installation of this product. We value your comment and may need to contact you to clarify some details so please complete your contact details clearly.

We would appreciate if you could complete as many of the following details as possible.

Your Name:	Your contact No.
Product Part No.	Product Invoice No.
Product Description:	Make, model, and year of vehicle:
Product Work Order No.	Company your from/Company product purchased from:

Date of Fitment: ____/____/____

Was the fitting hardware supplied complete?

Yes

No

If no what was not supplied

Did the installation go well?

Yes

No

Please provide comments

Please draw diagrams if you need to.

Post to
Reply Paid 122
PO Box 122
Margate QLD 4019

Fax to
(07) 3283 1168



WORLD'S BEST
ALLOY BULLBARS

East Coast Bullbars (ECB Pty Ltd)

Tel: 07 3897 5700

Fax: 07 3283 1168

ecb@ecb.com.au www.ecb.com.au

29 Snook St
Clontarf QLD 4019
Australia

Po Box 122
Margate QLD 4019
Australia

DESPATCH CHECKLIST

MHO58SY / NB7HO58SY / NBHO58SY

Work Order #	
Finish:	
Transport:	
Due Date:	

- 1 – Pair steel mounting brackets.
- 1 – Bolt Kit.



Is this product “the best it can be” Yes _____ / _____
Wrapper's initials / Checker initials

If **NO** fix before continuing

All parts checked and completed by:

Nut and bolts: _____ Date __/__/__

Order control: _____ Date __/__/__

Final wrap check: _____ Date __/__/__



**WORLD'S BEST
ALLOY BULLBARS**

East Coast Bullbars (ECB Pty Ltd)

Tel: 07 3897 5700

Fax: 07 3283 1168

ecb@ecb.com.au www.ecb.com.au

29 Snook St
Clontarf QLD 4019
Australia

Po Box 122
Margate QLD 4019
Australia

