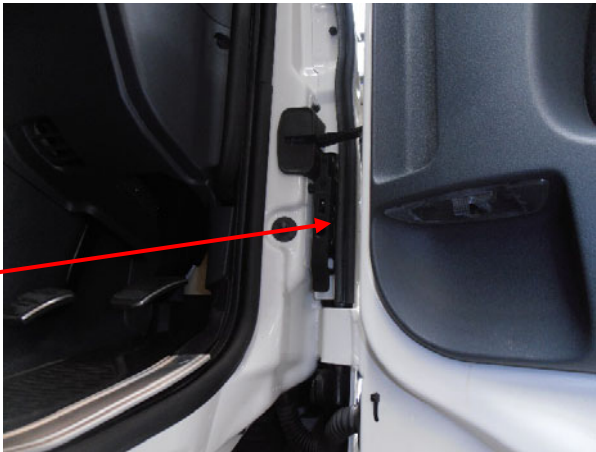
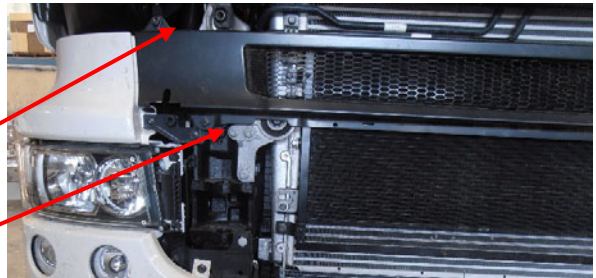
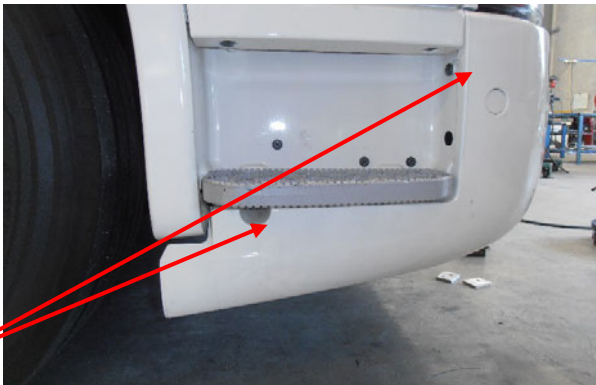
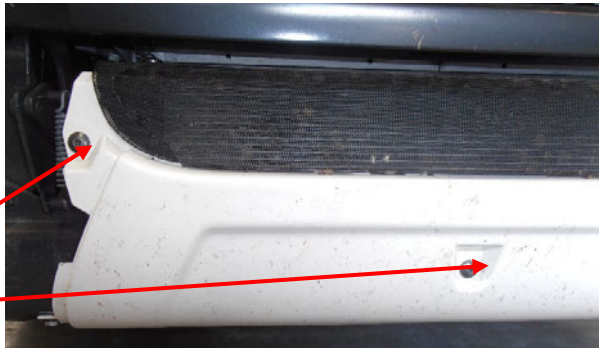
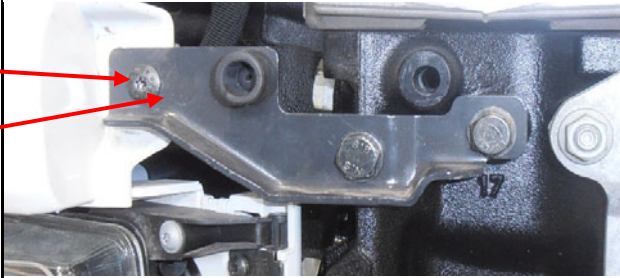
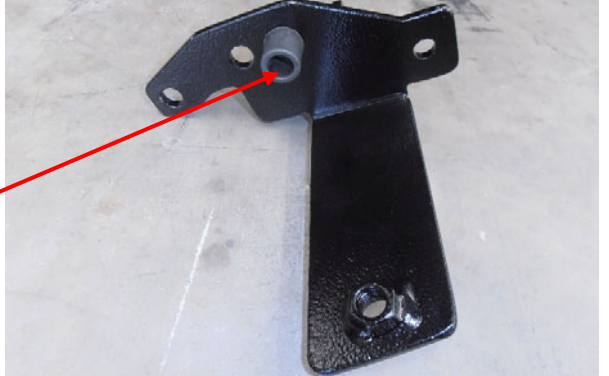
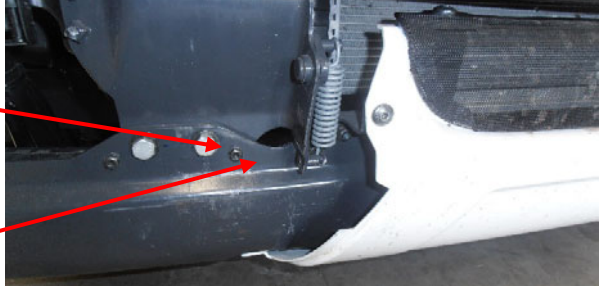


BULLBAR FITTING INSTRUCTIONS

TO SUIT: SCANIA R560 2013+

PART NUMBER:M3SC0001SYF

<p>Step1.</p> <p>Release the upper bonnet. Release lever is located inside the driver side front door frame near the hinges.</p> <p>Open the lower radiator compartment step.</p> <p style="text-align: center;">Upper bonnet release lever</p>	
<p>Step 2.</p> <p>Remove metal panel above the lower radiator compartment step. Retain panel and fasteners.</p> <p>Release nut each side</p> <p style="text-align: center;">Release bolt each side</p>	
<p>Step 3.</p> <p>Remove the lower outer body panels from below the headlights. Torx screws are located below the step, to the front of the top step, under the front of the body panel and a tab on the top of the body panel.</p> <p>Retain panels and all fasteners.</p> <p style="text-align: center;">Release Torx screws</p>	

<p>Step 4.</p> <p>Remove the lower centre body panel. Torx screws are located at the top, each side, under the front and one in the centre front face. Retain panel and all fasteners.</p> <p>Release Torx screws</p>	
<p>Step 5.</p> <p>Remove the upper metal bumper rubber brackets. Remove the bumper rubbers and discard the metal brackets. Retain fasteners.</p>	
<p>Step 6.</p> <p>Place the bumper rubbers to the supplied upper bar mounts using 3/16" x 3/4" Pan head screws, flat washers and nyloc nuts.</p> <p>Re-fit bumper rubbers</p>	
<p>Step 7.</p> <p>Remove lower bolts, 1 large and 1 small from each side. Remove and discard. Discard all fasteners.</p> <p>Remove and discard</p>	

Step 8.

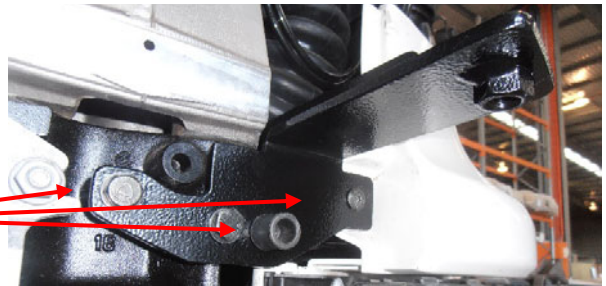
Position lower chassis mount assembly and fasten using 2 - 8mm spacer between chassis mount and vehicle chassis each side 1 - M14 x 2 x 75mm bolts, flat and spring washers and 1 - M8 x 1.5 x 60mm, flat washers and spring washers per side. Lightly tighten only.



Step 9.

Position upper mounts and fasten using the original fasteners.

Original fasteners



Step 10.

Trial fit the bar onto the chassis mounts using 5/8" x 2" and check the upper mount alignment with the upper bar mounts, adjust the lower chassis mounts if needed and fully tighten. Remove the bar and store safely.



Step 11.

Using the chassis mounts as a guide, drill an M10 hole through the vertical bracket on each side of the vehicle and fasten using 3/8" x 1-1/4" UNC bolts, flat washers and nyloc nuts.



Step 12.

Re-fit the lower centre body panel using the original fasteners.

Release Torx screws



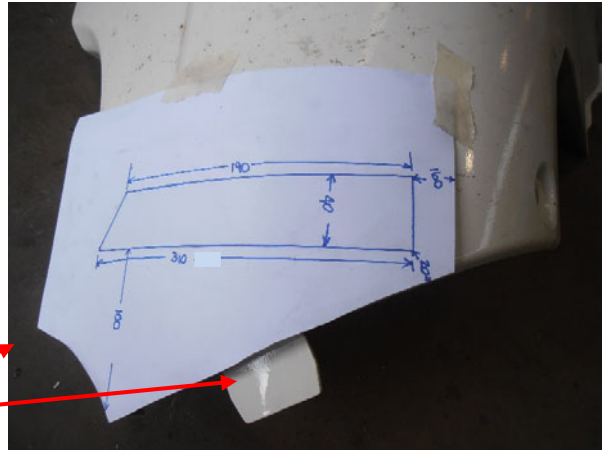
Step 13.

Align the template with the edges of each of the lower outer body panels and mark out cut lines.

Carefully cut slots into each of the lower outer body panels and remove any sharp edges.

Re-fit the panels back into place and fasten using the original fasteners.

Align the template



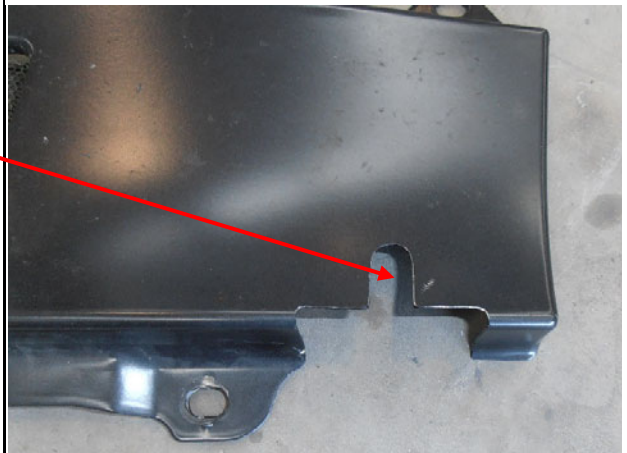
Step 14.

Place the template onto the upper metal panel and mark out cut lines.

Cut slots into each side of the upper metal panel.

Remove sharp edges and paint raw edge.

Re-fit the panel back into place and fasten using the original fasteners.



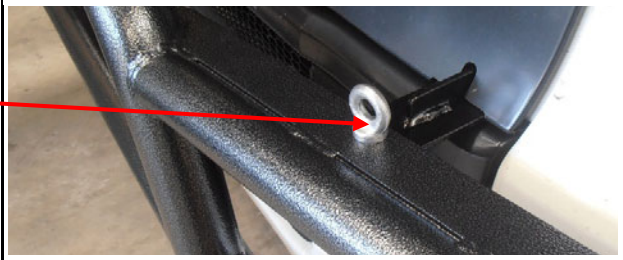
Step 15.

Align bar with the chassis mounts and fasten using 5/8" x 2" UNC bolts, flat washers and nyloc nuts being sure to fit nylon washers between bar mounts and the chassis mounts.



Step 16.

Fasten bar to the upper mounts using 1/2" Eye bolts and flat washers.



Step 17.

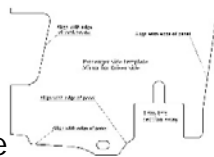
Check alignment of the bar with the vehicle.
Check all fasteners have been tightened.



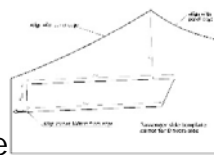
M3SC0001SYF FITTING KIT

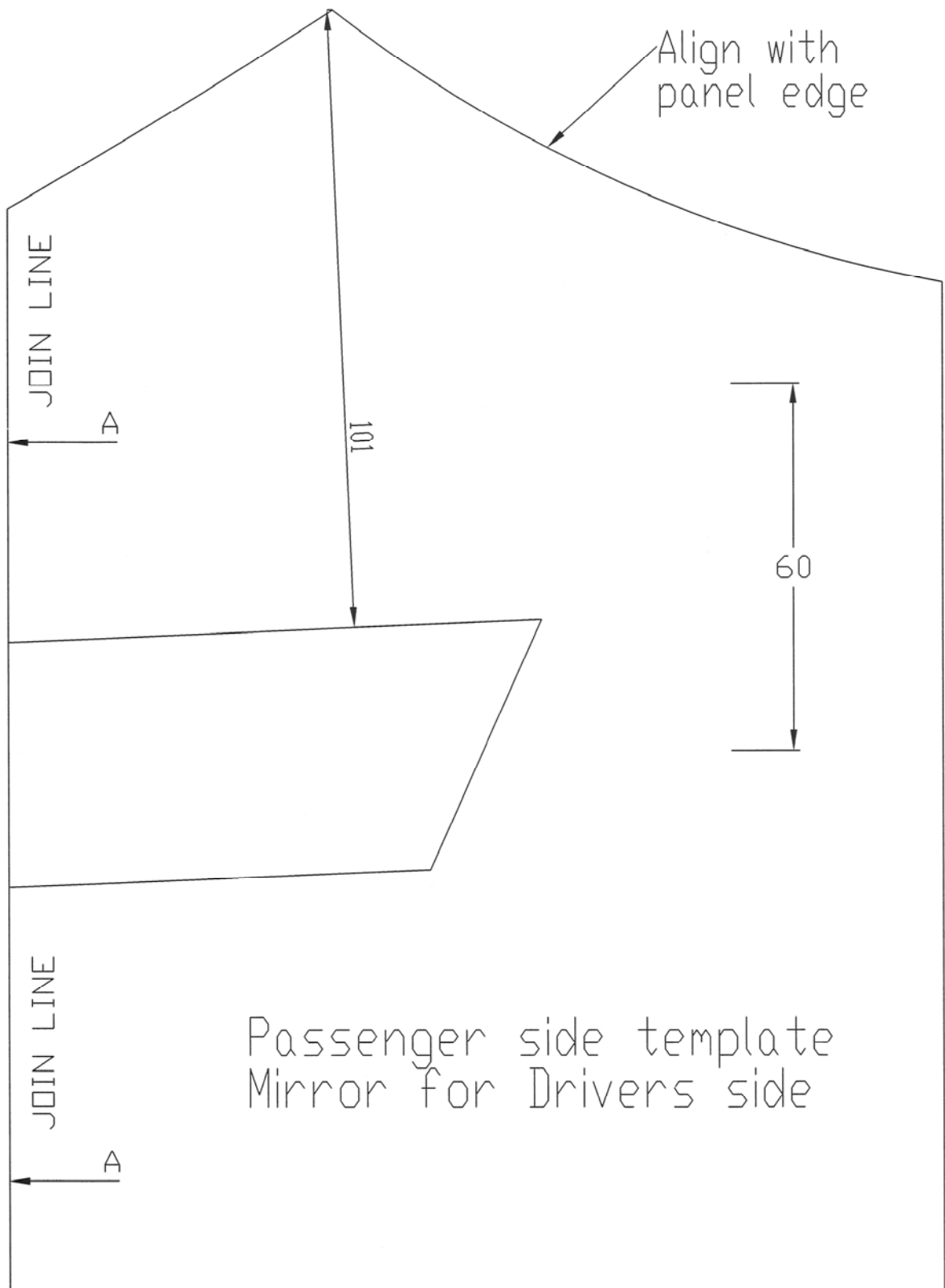
- | | |
|---|------------------------------------|
| 1 - Steel lower mount | 2 - 5/8" Nylon washers |
| 1 - pair top steel mounts | 2 - 3/8 x 1 1/4 bolts |
| 4 - 8mm chassis spacers (M3SC0001SY_H8AL) | 4 - 3/8 flat washers |
| 2 - 1/2" Eye bolts | 2 - 3/8 Nyloc nuts |
| 2 - M14 x 2 x 75mm Hex bolts | 2 - M8 x 1.5 x 60mm Hex bolts |
| 4 - 12 X 29 X 2.7 Flat washers | 2 - M8 Large Flat washers |
| 2 - 9/16" Spring washers | 2 - M8 Spring washers |
| 2 - 5/8 x 2 UNC Hex bolts | 2 - 3/16 x 3/4 Pan head set screws |
| 4 - M16 x 30 x 2 Flat washers | 4 - 3/16 flat washers |
| 2 - 5/8" Nyloc nuts | 2 - 3/16 Nyloc |

1 - Upper panel paper template

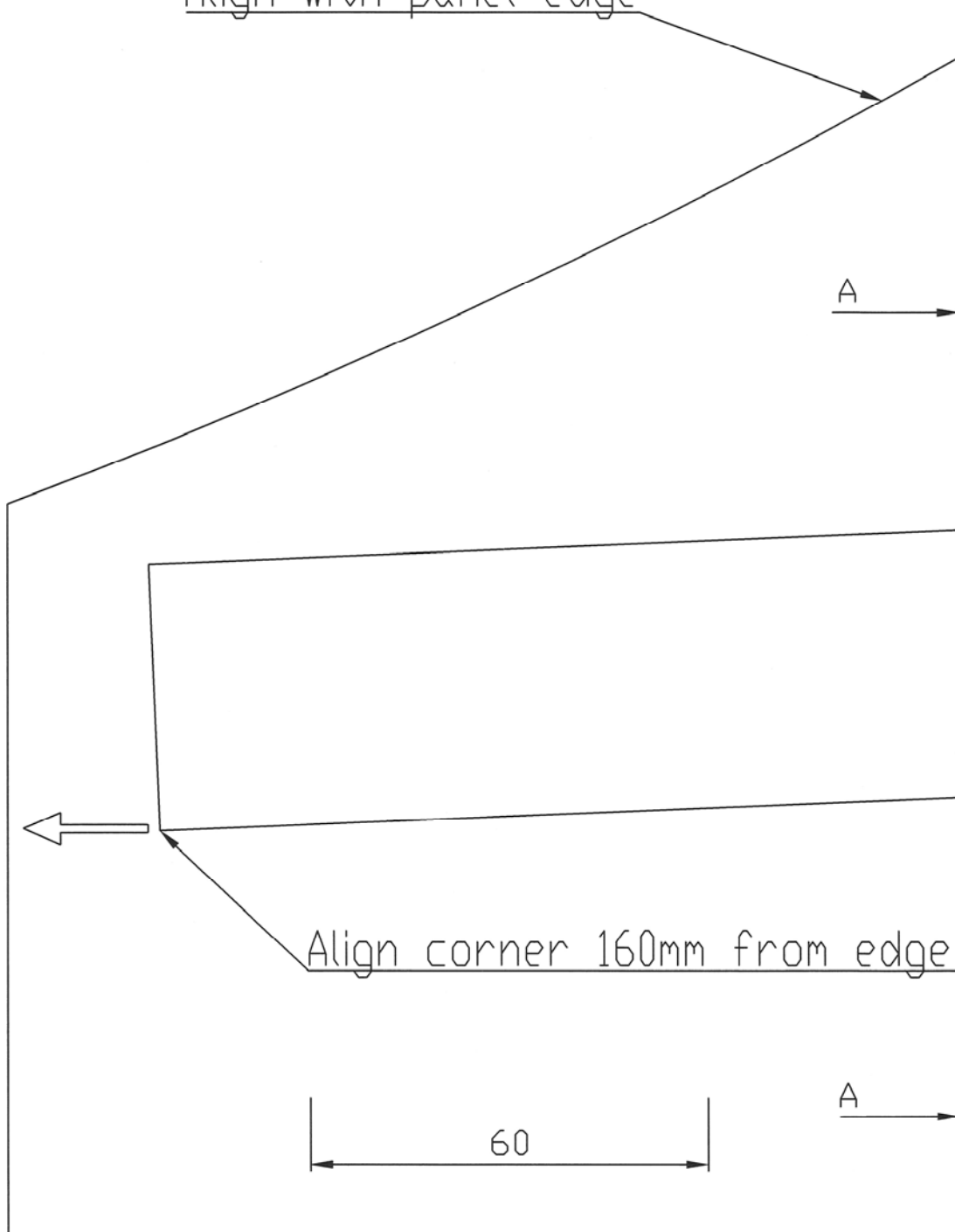


1 - Lower panel paper template





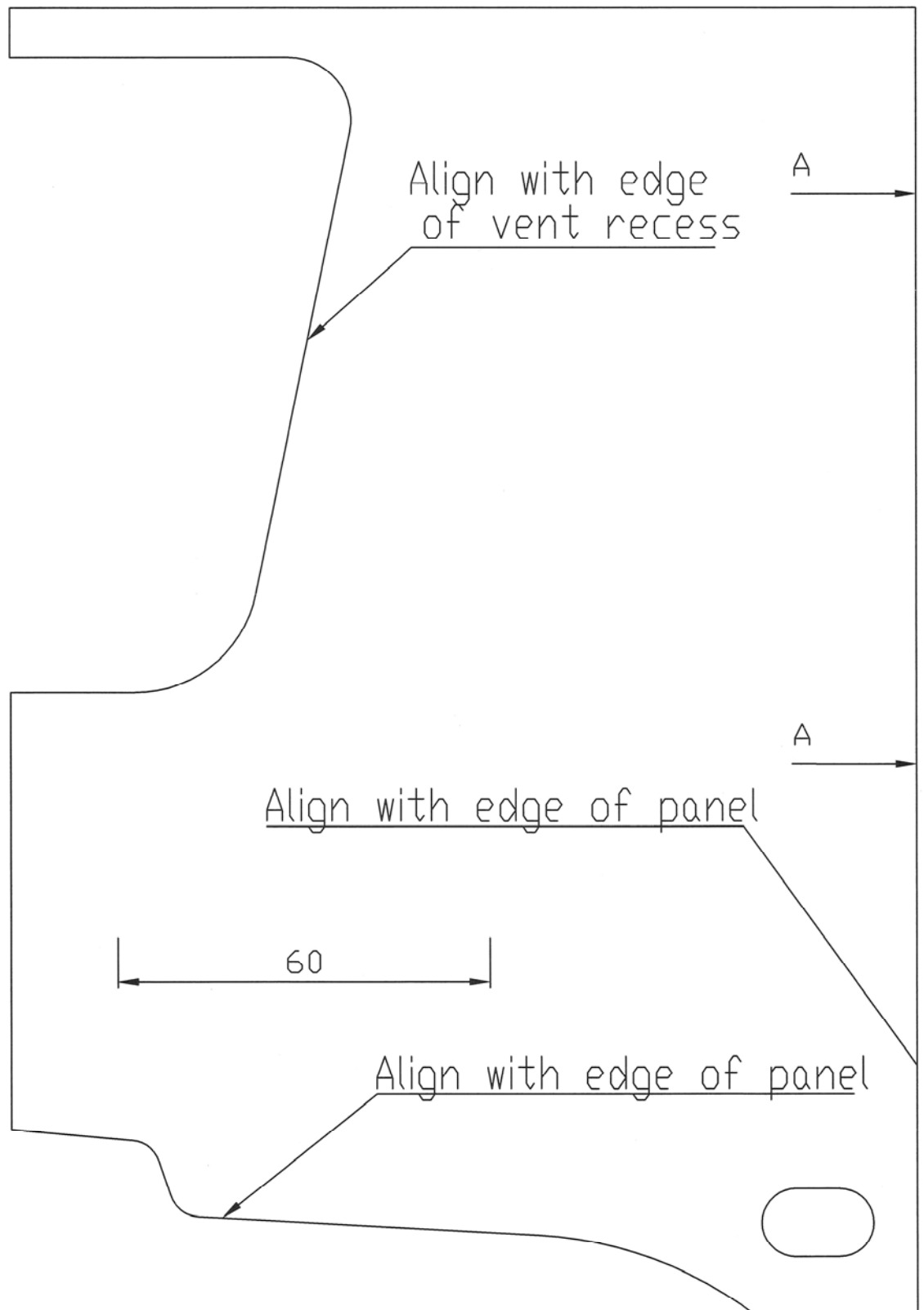
Align with panel edge

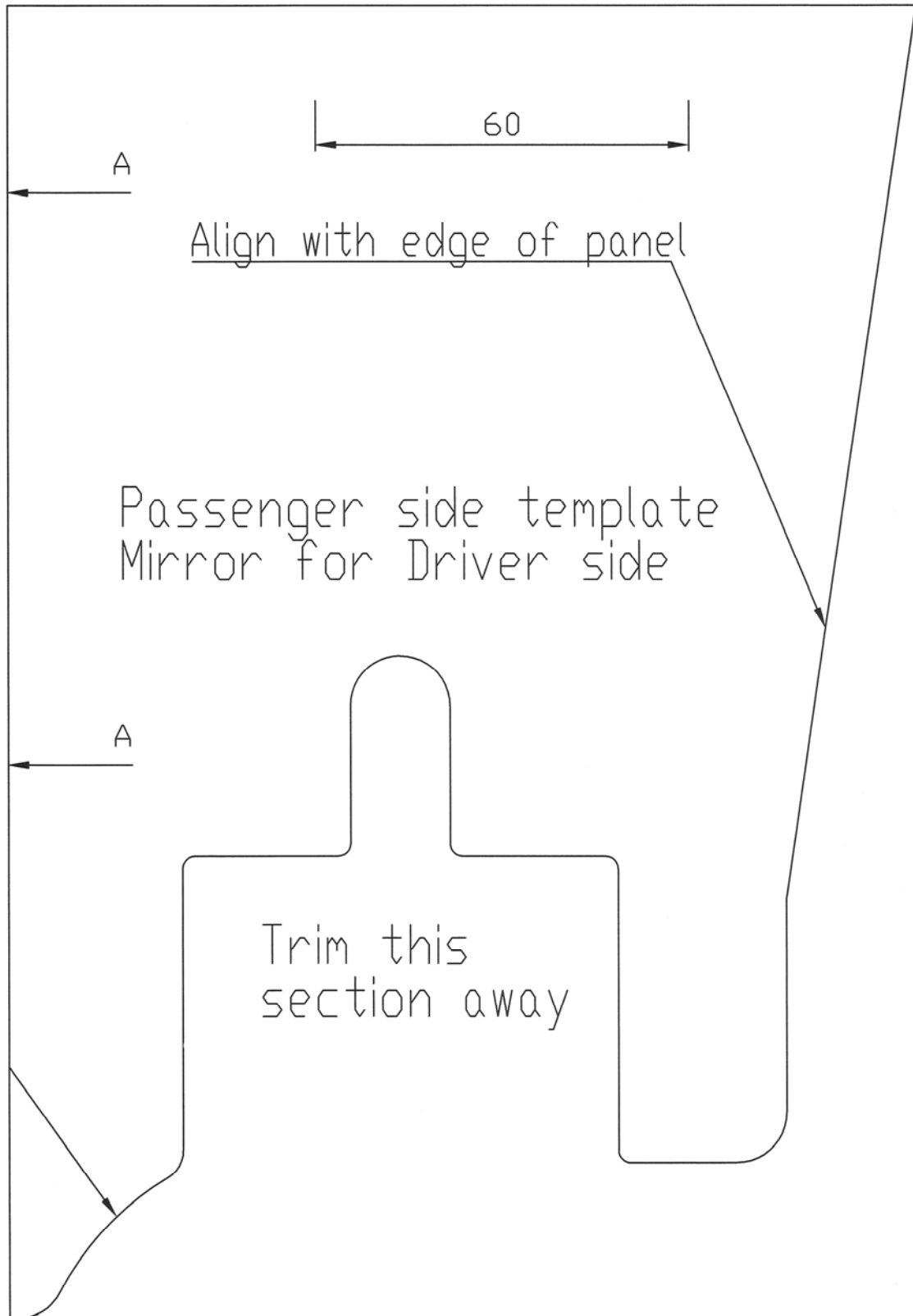


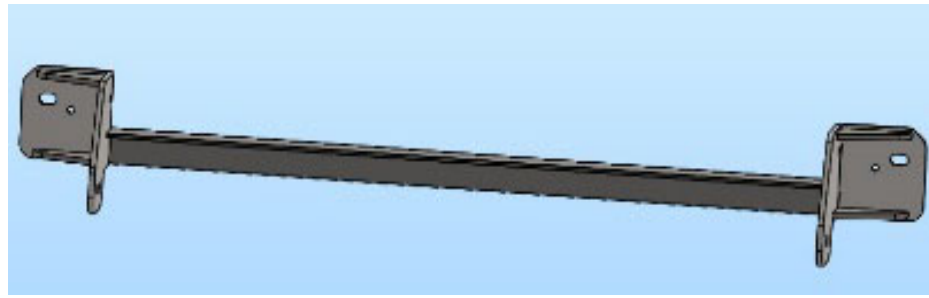
Align corner 160mm from edge

60

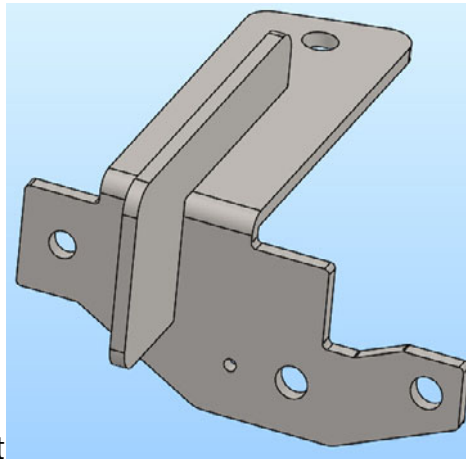
A



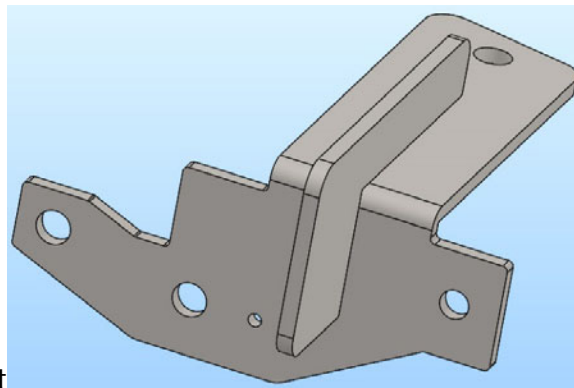




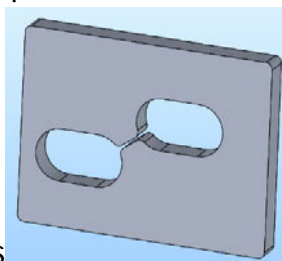
1 - Mount assembly



1 - Passenger side upper mount



1 - Driver side hand upper mount



4 - 8mm Spacer plates