



**WORLD'S BEST  
ALLOY BULLBARS**

**East Coast Bullbars (ECB Pty Ltd)**

Tel: 07 3897 5700

Fax: 07 3283 1168

ecb@ecb.com.au www.ecb.com.au

29 Snook St  
Clontarf QLD 4019  
Australia

Po Box 122  
Margate QLD 4019  
Australia

**EAV43SY**

SUPERCEEDS: EAV40SY  
REVISED: 13.02.13

## **FITTING INSTRUCTIONS**

### **VOLKSWAGON AMAROK 2/11 ON ECB WINCH COMPATIBLE ARC BAR WITH FOG LIGHTS AND PARKING SENSORS VEHICLE FRONTAL PROTECTION SYSTEM (VFPS) FOR AIR BAG & ADR COMPLIANT VEHICLES**

Check installation hardware before commencing.

- Special Requirements: T25 and T30 Torx drivers
  - If vehicle not fitted with original bumper lights, an auxiliary wiring harness (not supplied, can be purchased from ECB ASLWIRING) will be required to wire the lights supplied to the vehicles low beam light circuit.
1. Lift bonnet.
  2. Using a small flat screwdriver, gently remove fog light surrounds. Lever from inside top corner. Remove two 14mm head bolts beside top of light (1 per side).
  3. From under wheel arches, remove three T25 Torx head screws and two T30 Torx head bolts. Under bonnet, remove four 3mm allen head plastic screw clip. Remove centre number plate two T25 Torx head screws behind number plate (if fitted). Gently pull sides of bumper away from vehicle to unclip from retaining clips, and down on lower rear corner to unlock from retaining lug at front of inner guard. Disconnect fog lights (if fitted), Parking sensors (if fitted) and remove air sensor from bumper as removing bumper.
  4. Remove lower polystyrene bumper infill.
  5. Carefully unclip air dam between lower bumper support and radiator from front of radiator and remove.
  6. From inside of rails, remove horns, one 13 mm head bolt (per side) and separate horn bracket from attachment bracket, one T50 Torx head bolt. Should horns be attached to lock support, no change will be needed.
  7. From inside of passengers side of chassis rail, where horn was removed, use a punch to remove nutsert (rivet style nut) from rail. **See figure 1.** Drill hole to 13mm on passenger side only.
  8. Remove outer bumper stays from radiator support, two 10mm head bolts.
  9. Disconnect indicator and parking lights on vehicle. Install ECB quick click wiring harnesses (supplied) between disconnected harness and indicator / park lights on vehicle. Run wiring out from under lights ensuring clearance from sharp edges and moving parts.
  10. Connect ECB Quick Click fog light wiring harness (supplied) into original wiring harness. Should vehicle not have fog lights fitted, an aftermarket wiring harness will be required to be fitted. (Ensure fog lights are wired to low beam circuit and have an internal cabin switch)
  11. Fit ECB winch mount (supplied) to front of bumper support, rear leg to inside of chassis rails. **See figure 2.** Use four M12 x 40 bolts, flat washers, spring washers and nuts for front (supplied), one M12 x 40 bolt and washer on 300mm wire, flat washer, spring washer and nut (supplied) for passengers side inner of chassis rail and one M8 x 30 bolt, flat washer, spring washer (supplied) for drivers side inner chassis rail. Inside of



**WORLD'S BEST  
ALLOY BULLBARS**

**East Coast Bullbars (ECB Pty Ltd)**

Tel: 07 3897 5700

Fax: 07 3283 1168

ecb@ecb.com.au www.ecb.com.au

29 Snook St  
Clontarf QLD 4019  
Australia

Po Box 122  
Margate QLD 4019  
Australia

chassis rails are accessible from welded connection area between chassis rail and front cross member. **See figure 3. Finger tighten only.**

12. Centralise ECB winch mount to body of vehicle. **Tighten all bolts.**
13. Using mounts as a guide, drill two holes per side in front of mount and one hole in rear leg to 13mm. **See figure 4 and 5. Blow filings clear and treat all exposed metal with a rust inhibitor.** Fit four M12 x 40 bolts, flat washers, spring washers and nuts (supplied) to front drilled holes and two M12 x 40 bolts and washers on 300mm wire, flat washers, spring washers and nuts for chassis rail holes. **Tighten all bolts.**
14. Install fairlead roller onto front of ECB winch frame using M12 x 40 bolts, flat washers, spring washers and nuts (supplied). **Finger tighten only. See figure 6.**
15. Install winch into ECB winch frame according to winch suppliers instructions. Fit control box to ECB control box mount and install to winch using worm drive clamps around motor end of winch. Leave control box loose to allow fitment of plastic bumper to vehicle. Wire winch as per manufacturers instructions. **See figure 7. Note:** This kit comes with two control box mounts, one to suit Warn compatible control box and one for mean mother compatible control box. Use control box mount suitable to your winch.
16. Refit horns (if required) to top hole in of ECB steel mounting brackets using M8 x 30 bolts, flat washers, spring washers and nuts (supplied).
17. Remove flare from side of bumper (if fitted), two T25 torx head screws on rear of flare. Flares are hot melt secured at front. Slight pressure will break this join.
18. Mask rear edge of plastic bumper to allow marking. Measure and mark 220mm down from top rear corner of plastic bumper. Using 50mm paper masking tape; join this mark to the top outer edge of the fog light opening. **See figure 8.**
19. Double check lines to be cut. Across centre open section of grille, trim vertical bars at top. **See figure 9.** Where grille fills on sides, trim under second rib from top. Retain temperature sensor mount hole on passenger's side of plastic bumper. **See figure 10.** Trim bumper across marked lines around outside of plastic bumper.
20. Tape top of flares to avoid damage during cutting. Measure templates to ensure correct sizing. Cut templates from instruction with sharp scissors. Use templates to mark flares. Double check to ensure correctness of marking and trim flares to size. **See figure 11. Caution:** Screw on rear of flare must be retained.
21. Refit top section bumper and flares to vehicle using original equipment screws. Align and screw front lower corner of flare to plastic bumper using one 8 gauge PK screw and screw covers (supplied) (per side). Use 3mm clip lock trim (supplied) to cover cut edge of flare. Cut inner end of clip lock trim shorter than outer edge to allow full coverage of cut edge.
22. Adjust control box up to touch front of plastic bumper. This will place control box in rear of channel when ECB protection bar is fitted. **Tighten in position.**
23. Fit ECB LED indicator / park lights (supplied) into protection bar as per instructions supplied with the LED indicator kit. **NOTE: Ensure park light is to outside. See figure 12.**
24. Attach ECB fog lights to protection bar. Place M6 x 20 bolts, spring washers (supplied) through light mount from inside and attach nut to top. Slide assembly into light mount in Protection bar and centralize light to hole. **TIGHTEN FIRM ONLY. See figure 13.**



**WORLD'S BEST  
ALLOY BULLBARS**

**East Coast Bullbars (ECB Pty Ltd)**

Tel: 07 3897 5700

Fax: 07 3283 1168

ecb@ecb.com.au www.ecb.com.au

29 Snook St  
Clontarf QLD 4019  
Australia

Po Box 122  
Margate QLD 4019  
Australia

25. Attach 6mm clip lock trim (supplied) to top of ECB protection bar. **NOTE:** Trim off lower edge on an angle so trim will sit flush with end of protection bar. **See figures 14, 15 and 16.**
26. Loosely zip tie parking sensor wiring harness into rear of ECB protection bar. **See figure 17.** Should vehicle not have parking sensors, fit six plastic plugs (supplied) to sensor holes in Protection Bar.
27. Fit ECB protection bar to outside of ECB winch mount using M12 x 40 bolts, flat washers, spring washers and nuts (supplied). **Finger tighten only.**
28. Align ECB protection bar. **See figures 18 and 19. Tighten all bolts.**
29. Connect and test vehicle lighting for correct operation.
30. Install centre under body guard to top of skirt lower leg using three M6 x 20 bolts, flat washers and nyloc nuts (supplied). **Finger tighten only. See figure 20.**
31. Install side under body guards (supplied) to top side of skirt lower leg and lower side of centre under body guard using four M6 x 20 bolts, flat washers and nyloc nuts (supplied). Centralise under body guards to vehicle and tighten all bolts. **See figure 21.**
32. Using under body guard as a guide, drill two 6mm holes through vehicles under body guard. Fit M6 x 20 bolts, flat washers and nyloc nuts (supplied). **See figure 22. Blow filings clear and treat all exposed metal with a rust inhibitor.** Tighten all bolts.
33. Trim inner guards to suit rear of under body guards. **See figure 23.** Attach inner guard to rear of under body guard using three 12-14 hex head self tapping screws (supplied) (per side).

#### **ENSURE NUMBER PLATE IS CLEARLY VISABLE**

**Note:** When fitting/refitting the licence plate to the vehicle, ensure there is no obstruction to licence plate vision in accordance with local authorities. If required relocate licence plate to an alternate location.

#### **Further VFPS Notes:**

- a) Do not attach VFPS to the vehicle using anchorages not intended for this purpose (e.g. engine mounting bolts).
- b) Do not use this product for any vehicle make or model, other than those specified by the VFPS manufacturer.
- c) Do not remove the plaque or label from the VFPS.
- d) Do not modify the structure of the VFPS in any way.
- e) No accessory or fitment should project forward of the VFPS forward profile.
- f) **ENSURE THESE INSTRUCTIONS ARE LEFT WITH VEHICLE OWNER AND/OR OPERATOR.**

#### **IMPORTANT INFORMATION**

Periodically check bolts and nuts for correct tightness, especially if travelling on rough roads

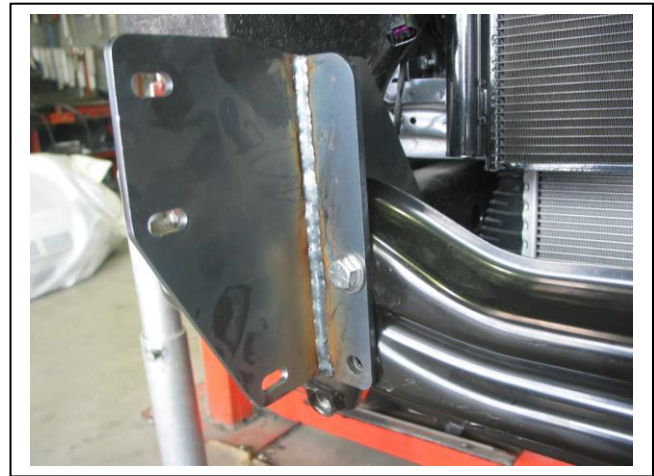


**FITTING KIT**

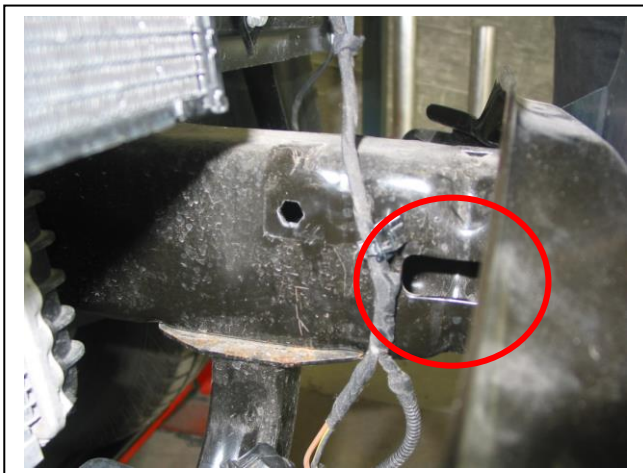
1 – ECB winch mount	2 – black plastic screw covers (2 piece, top and bottom)
1 – Centre under body guard	15 – M6 x 20 bolts
1 – Pair side under body guards	28 – M6 flat washers
1 – Warn winch control bracket (WIN_CONT_B4MS) – <b>IN KIT</b>	2 – M6 spring washers
1 – Mean Mother winch bracket(MOTHERCB_B4MS) – <b>IN KIT</b>	2 – M6 nut
2 – 127mm Worm drive hose clamps	13 – M6 nyloc nuts
18 – M12 x 1.75 x 40 bolts	6 - 12-14 hex head self tapping screws
3 – M12 x 1.75 x 40 bolts and washers on 300mm wire	1 – ECB LED Indicator / Park light kit
40 – M12 flat washers	1 – Quick Click Indi / Park kit (IC11AMARLED100H)
21 – M12 spring washers	1 – ECB Fog light kit
21 – M12 x 1.75 nuts	4 – ECB fog light surrounds
3 – M8 x 30 bolts	1 – Quick Click fog wiring kit (IC07LC791004ECBH)
5 – M8 flat washers	2 – 120mm lengths 3mm clip lock trim
3 – M8 spring washers	1 – 2400mm length 6mm clip lock trim
2 – M8 nuts	10 – 150mm zip ties
2 – 8 gauge x 1 PK screws	4 – 22mm black plastic button plugs



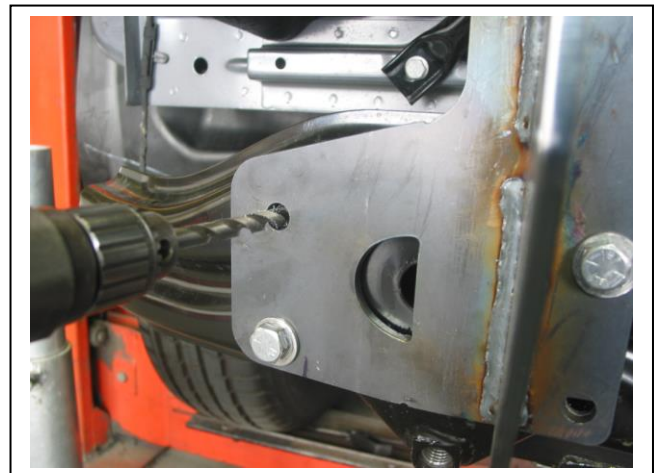
**Figure 1:** Remove riveted nut (nutsert)



**Figure 2:** Rear leg fitment to inside of chassis rail.



**Figure 3:** Opening in front of chassis rail



**Figure 4:** Drill two holes in front of each mount





East Coast Bullbars (ECB Pty Ltd)

Tel: 07 3897 5700

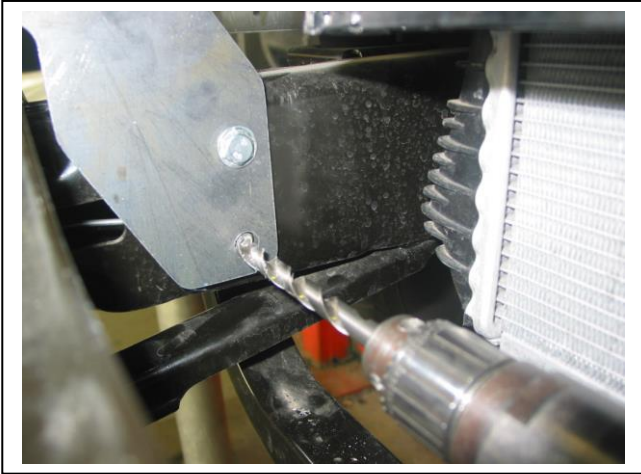
Fax: 07 3283 1168

ecb@ecb.com.au www.ecb.com.au

29 Snook St  
Clontarf QLD 4019  
Australia

Po Box 122  
Margate QLD 4019  
Australia

WORLD'S BEST  
ALLOY BULLBARS



**Figure 5:** Drill one 10mm hole in rear leg of each mount



**Figure 6:** Fairlead roller fitted to winch frame. Finger tighten only



**Figure 7:** Warn XP9.5 fitted to winch frame.



**Figure 8:** Measure rear of plastic bumper 220mm to cut line on bumper.



**Figure 9:** Centre of grille cut at top and removed.



**Figure 10:** Cut side of grille under second rib. Retain thermo sensor mounting point.



East Coast Bullbars (ECB Pty Ltd)

Tel: 07 3897 5700

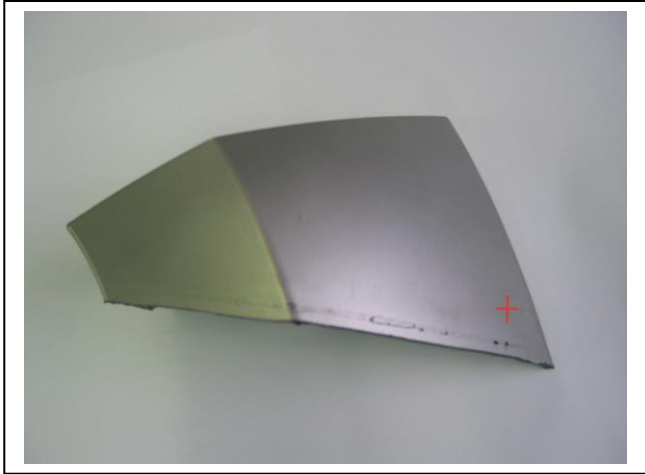
Fax: 07 3283 1168

ecb@ecb.com.au www.ecb.com.au

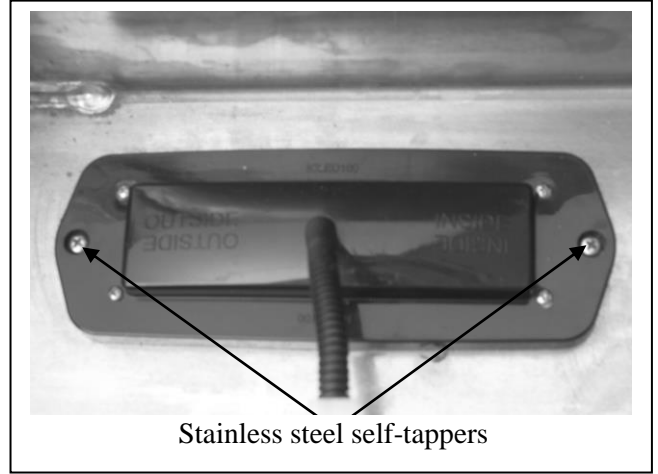
29 Snook St  
Clontarf QLD 4019  
Australia

Po Box 122  
Margate QLD 4019  
Australia

WORLD'S BEST  
ALLOY BULLBARS

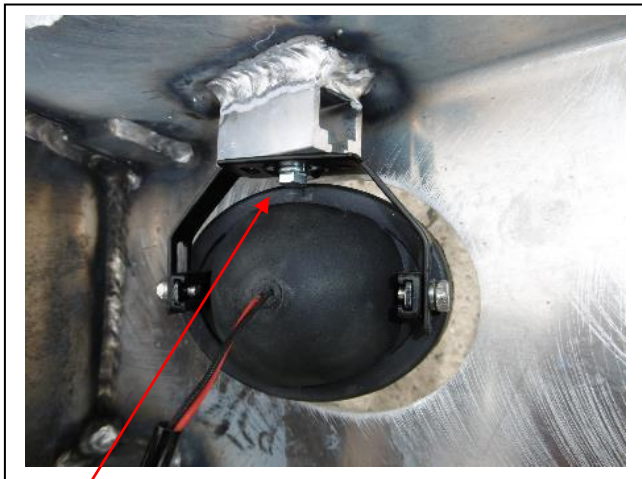


**Figure 11:** Use template to measure and cut flare to size. Affix to bumper at red crossed point.



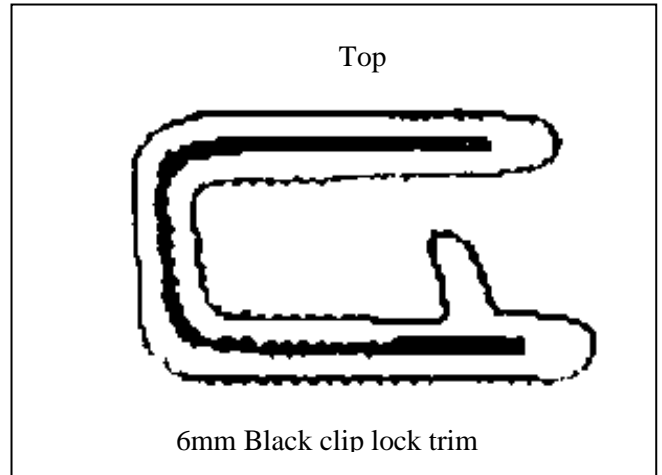
Stainless steel self-tappers

**Figure 12**



M6 bolt

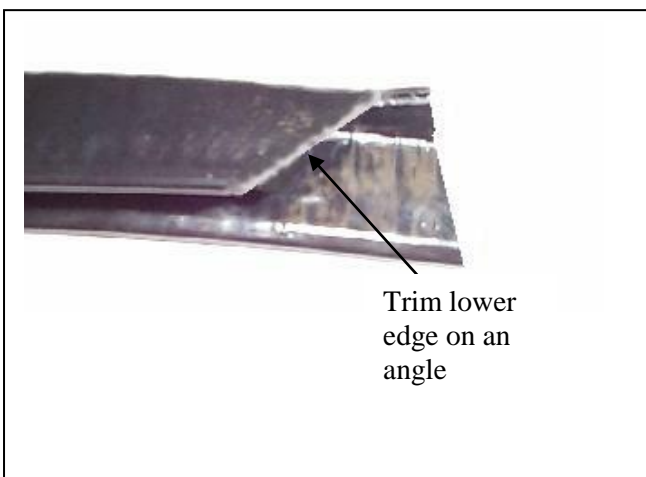
**Figure 13**



Top

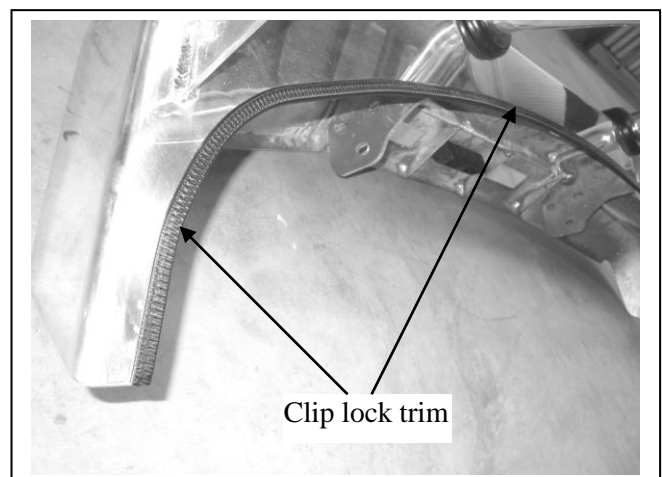
6mm Black clip lock trim

**Figure 14**



Trim lower edge on an angle

**Figure 15**



Clip lock trim

**Figure 16**





East Coast Bullbars (ECB Pty Ltd)

Tel: 07 3897 5700

Fax: 07 3283 1168

ecb@ecb.com.au www.ecb.com.au

WORLD'S BEST  
ALLOY BULLBARS

29 Snook St  
Clontarf QLD 4019  
Australia

Po Box 122  
Margate QLD 4019  
Australia



Figure 17: Parking sensor finish mounted.



Figure 18: Front view



Figure 19: Side view



Figure 20: Centre under body guard.



Figure 21: Side under body guard.



Figure 22: Drill underbody guard hole to 6mm



WORLD'S BEST  
ALLOY BULLBARS

East Coast Bullbars (ECB Pty Ltd)

Tel: 07 3897 5700

Fax: 07 3283 1168

ecb@ecb.com.au www.ecb.com.au

29 Snook St  
Clontarf QLD 4019  
Australia

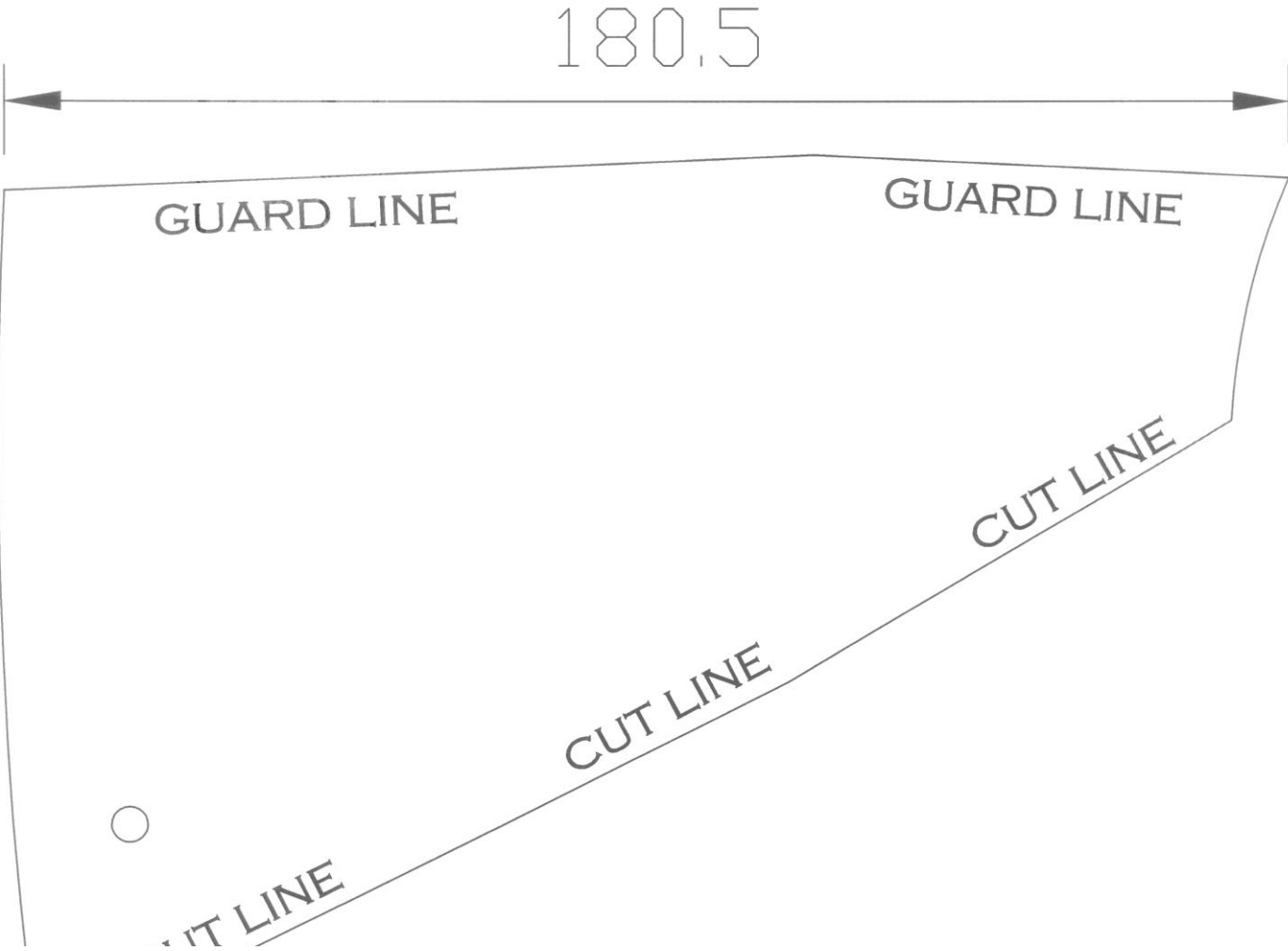
Po Box 122  
Margate QLD 4019  
Australia



**Figure 23:** Cut line for inner guard. Attach using three self tapping screws.



# Flare Template





**WORLD'S BEST  
ALLOY BULLBARS**

**East Coast Bullbars (ECB Pty Ltd)**

Tel: 07 3897 5700

Fax: 07 3283 1168

ecb@ecb.com.au [www.ecb.com.au](http://www.ecb.com.au)

29 Snook St  
Clontarf QLD 4019  
Australia

Po Box 122  
Margate QLD 4019  
Australia



**WORLD'S BEST  
ALLOY BULLBARS**

**East Coast Bullbars (ECB Pty Ltd)**

Tel: 07 3897 5700

Fax: 07 3283 1168

ecb@ecb.com.au www.ecb.com.au

29 Snook St  
Clontarf QLD 4019  
Australia

Po Box 122  
Margate QLD 4019  
Australia

**We value your comments**

Dear Fitter,

ECB would like to know how you went with the installation of this product. We value your comment and may need to contact you to clarify some details so please complete your contact details clearly.

We would appreciate if you could complete as many of the following details as possible.

<b>Your Name:</b>	<b>Your contact No.</b>
<b>Product Part No.</b>	<b>Product Invoice No.</b>
<b>Product Description:</b>	<b>Make, model, and year of vehicle:</b>
<b>Product Work Order No.</b>	<b>Company your from/Company product purchased from:</b>

**Date of Fitment:** \_\_\_\_/\_\_\_\_/\_\_\_\_

Was the fitting hardware supplied complete?                      Yes                      No

If no what was not supplied

---



---

Did the installation go well?    Yes                      No

Please provide comments

---



---



---

Please draw diagrams if you need to.

**Post to**  
Reply Paid 122  
PO Box 122  
Margate QLD 4019

**Fax to**  
(07) 3283 1168





**WORLD'S BEST  
ALLOY BULLBARS**

**East Coast Bullbars (ECB Pty Ltd)**

Tel: 07 3897 5700

Fax: 07 3283 1168

ecb@ecb.com.au [www.ecb.com.au](http://www.ecb.com.au)

29 Snook St  
Clontarf QLD 4019  
Australia

Po Box 122  
Margate QLD 4019  
Australia



East Coast Bullbars (ECB Pty Ltd)

Tel: 07 3897 5700

Fax: 07 3283 1168

ecb@ecb.com.au www.ecb.com.au

29 Snook St  
Clontarf QLD 4019  
Australia

Po Box 122  
Margate QLD 4019  
Australia

WORLD'S BEST  
ALLOY BULLBARS

## DESPATCH CHECKLIST EAV43SY

ICZBKCV43



Work Order #	
Finish:	
Transport:	
Due Date:	

- 1 –Winch mount.
- 1 – Warn winch control bracket (WIN\_CONT\_B4MS) – **IN KIT**
- 1 – Mean Mother winch bracket(MOTHERCB\_B4MS) – **IN KIT**
- 2 – 127mm Worm drive hose clamps
- 1 – centre under body guard (P/C black)
- 1 – Pair side under body guard (P/C black)
- 1 – Bolt Kit.
- 1 – LED ECB indicator / park light kit.
- 1 – Quick Click Indi / Park kit (IC11AMARECB100H)
- 1 - Quick Click fog light kit (IC07LC791004ECBH)
- 1 – fog light kit
- 4 – fog light surrounds
- 1 – 2400mm length 6mm clip lock
- 2 – 120mm length 3mm clip lock
- 2 – ECB Overrides – **Fitted to Bar**
- 5 – 6mm Air Vents – **channel vents only Fitted to Bar**

**See other side of  
this page for  
photos of all  
mounts**



Is this product “the best it can be” Yes \_\_\_\_\_ / \_\_\_\_\_  
Wrapper’s initials / Checker initials

If **NO** fix before continuing

All parts checked and completed by:

Nut and bolts: \_\_\_\_\_ Date \_\_/\_\_/\_\_

Order control: \_\_\_\_\_ Date \_\_/\_\_/\_\_

Final wrap check: \_\_\_\_\_ Date \_\_/\_\_/\_\_



East Coast Bullbars (ECB Pty Ltd)

Tel: 07 3897 5700

Fax: 07 3283 1168

ecb@ecb.com.au www.ecb.com.au

29 Snook St  
Clontarf QLD 4019  
Australia

Po Box 122  
Margate QLD 4019  
Australia

