



WORLD'S BEST
ALLOY BULLBARS

East Coast Bullbars (ECB Pty Ltd)

Tel: 07 3897 5700

Fax: 07 3283 1168

ecb@ecb.com.au www.ecb.com.au

29 Snook St
Clontarf QLD 4019
Australia

Po Box 122
Margate QLD 4019
Australia

EAV42SY

SUPERCEEDS: 13.02.13

REVISED: 23.06.17

FITTING INSTRUCTIONS

VOLKSWAGON AMAROK 2/11 ON ECB FOG LIGHT BIG TUBE™ BAR WITH PARKING SENSORS VEHICLE FRONTAL PROTECTION SYSTEM (VFPS) FOR AIR BAG & ADR COMPLIANT VEHICLES

Check installation hardware before commencing.

- Special Requirements: T25 and T30 Torx drivers
 - If vehicle not fitted with original bumper lights, an auxiliary wiring harness (not supplied, can be purchased from ECB ASLWIRING) will be required to wire the lights supplied to the vehicles low beam light circuit.
1. Lift bonnet.
 2. Using a small flat screwdriver, gently remove fog light surrounds. Lever from inside top corner. Remove two 14mm head bolts beside top of light (1 per side).
 3. From under wheel arches, remove three T25 Torx head screws and two T30 Torx head bolts. Under bonnet, remove four 3mm allen head plastic screw clip. Remove centre number plate two T25 Torx head screws behind number plate (if fitted). Gently pull sides of bumper away from vehicle to unclip from retaining clips, and down on lower rear corner to unlock from retaining lug at front of inner guard. Disconnect fog lights (if fitted), Parking sensors (if fitted) and remove air sensor from bumper as removing bumper.
 4. Carefully remove parking sensors, parking sensor wiring harness (if fitted) from coloured section of bumper.
 5. Remove lower polystyrene bumper infill.
 6. Remove two grey push pull clips from front of chassis cross member into lower air dam. Carefully unclip lower air dam from front of radiator and remove.
 7. From inside of rails, remove horns, one 10mm head bolt (per side) and separate horn bracket from attachment bracket, one T50 Torx head bolt. Should horns be attached to lock support, no change will be needed.
 8. From inside of passengers side of chassis rail, where horn was removed, use a punch to remove nutsert (rivet style nut) from rail. **See figure 1.**
 9. Remove outer bumper stays from radiator support, two 10mm head bolts.
 10. Disconnect indicator and parking lights on vehicle. Install ECB quick click wiring harnesses (supplied) between disconnected harness and indicator / park lights on vehicle. Run wiring out from under lights ensuring clearance from sharp edges and moving parts.
 11. Connect ECB Quick Click fog light wiring harness (supplied) into original wiring harness. Should vehicle not have fog lights fitted, an aftermarket wiring harness will be required to be fitted. (Ensure fog lights are wired to low beam circuit and have an internal cabin switch)
 12. Fit ECB steel mounting brackets (supplied) to front of bumper support, rear leg to inside of chassis rails. **See figure 2.** Use two ½ x 1 ¼ bolts, flat washers, spring washers and nuts for front (supplied), one 3/8 x 1 ¼ bolt and washer on 300mm wire, flat washer, spring washer and nut (supplied) for passengers side inner of chassis rail and one M8 x 30 bolt, flat washer, spring washer (supplied) for drivers side inner chassis rail. Inside of



**WORLD'S BEST
ALLOY BULLBARS**

East Coast Bullbars (ECB Pty Ltd)

Tel: 07 3897 5700

Fax: 07 3283 1168

ecb@ecb.com.au www.ecb.com.au

29 Snook St
Clontarf QLD 4019
Australia

Po Box 122
Margate QLD 4019
Australia

passengers side chassis rail is accessible from welded connection area between chassis rail and front cross member. **See figure 3. Finger tighten only.** Ensure mounts are vertical.

13. Measure outside measurement of alloy mounts. Set measurement between ECB steel mounting brackets to suit ECB alloy protection bar. Tighten all bolts. Ensure ECB steel mounting brackets remain vertical and central to vehicle. **Tighten all bolts.**
14. Using mounts as a guide, drill two holes per side in front of mount and one hole in rear leg to 10mm. **See figure 4 and 5. Blow filings clear and treat all exposed metal with a rust inhibitor.** Fit four 3/8 x 1 1/4 bolts, flat washers, spring washers and nuts (supplied) to front drilled holes and two 3/8 x 1 1/4 bolts and washers on 300mm wire, flat washers, spring washers and nuts for chassis rail holes. **Tighten all bolts.**
15. Refit horns (if required) to top hole in steel mounting bracket using one M8 x 30 bolt, flat washer, spring washer and nut supplied.
16. Remove flare from side of bumper (if fitted), two T25 torx head screws on rear of flare. Flares are hot melt secured at front. Slight pressure will break this join.
17. Mask rear edge of plastic bumper to allow marking. Measure and mark 220mm down from top rear corner of plastic bumper. Using 50mm paper masking tape; join this mark to the top outer edge of the fog light opening. **See figure 6.**
18. Double check lines to be cut. Across centre open section of grille, trim vertical bars at top. **See figure 7.** Where grille fills on sides, trim under second rib from top. Retain temperature sensor mount hole on passenger's side of plastic bumper. **See figure 8.** Trim bumper across marked lines around outside of plastic bumper.
19. Tape top of flares to avoid damage during cutting. Measure templates to ensure correct sizing. Cut templates from instruction with sharp scissors. Using templates to mark flares. Double check to ensure correctness of marking and trim flares to size. **See figure 9. Caution:** Screw on rear of flare must be retained.
20. Refit top section bumper and flares to vehicle using original equipment screws. Align and screw front lower corner of flare to plastic bumper using one 8 gauge PK screw and screw covers (supplied) (per side). Use 3mm clip lock trim (supplied) to cover cut edge of flare. Cut inner end of clip lock trim shorter than outer edge to allow full coverage of cut edge.
21. Fit ECB LED indicator / park lights (supplied) into protection bar as per instructions supplied with the LED indicator kit. **NOTE: Ensure park light is to outside. See figure 10.**
22. Attach ECB fog lights to protection bar. Place M6 x 20 bolts, spring washers (supplied) through light mount from inside and attach nut to top. Slide assembly into light mount in Protection bar and centralize light to hole.) **TIGHTEN FIRM ONLY. See figure 11.**
23. Attach 6mm clip lock trim (supplied) to top of ECB protection bar. **NOTE:** Trim off lower edge on an angle so trim will sit flush with end of protection bar. **See figures 12, 13 and 14.**
24. Loosely zip tie parking sensor wiring harness into rear of ECB protection bar. **See figure 15.** Should vehicle not have parking sensors, fit six plastic plugs (supplied) to sensor holes in Protection Bar.
25. Fit ECB protection bar to outside of ECB steel mounting brackets using 1/2 x 1 1/2 bolts, flat washers, spring washers and nuts (supplied). **Finger tighten only.**



**WORLD'S BEST
ALLOY BULLBARS**

East Coast Bullbars (ECB Pty Ltd)

Tel: 07 3897 5700

Fax: 07 3283 1168

ecb@ecb.com.au www.ecb.com.au

29 Snook St
Clontarf QLD 4019
Australia

Po Box 122
Margate QLD 4019
Australia

26. Align ECB protection bar. **See figures 16 and 17. Tighten all bolts.**
27. Connect and test vehicle lighting and parking sensors for correct operation.
28. Install centre under body guard to top of skirt lower leg using three M6 x 20 bolts, flat washers and nyloc nuts (supplied). **Finger tighten only. See figure 18.**
29. Install side under body guards (supplied) to top side of skirt lower leg and lower side of centre under body guard using four M6 x 20 bolts, flat washers and nyloc nuts(supplied). Centralise under body guards to vehicle and tighten all bolts. **See figure 19.**
30. Using under body guard as a guide, drill two 6mm holes through vehicles under body guard. Fit M6 x 20 bolts, flat washers and nyloc nuts (supplied). **See figure 20. Blow filings clear and treat all exposed metal with a rust inhibitor.** Tighten all bolts.
31. Trim inner guards to suit rear of under body guards. **See figure 21.** Attach inner guard to rear of under body guard using three 12-14 hex head self tapping screws (supplied) (per side).

ENSURE NUMBER PLATE IS CLEARLY VISABLE

Note: When fitting/refitting the licence plate to the vehicle, ensure there is no obstruction to licence plate vision in accordance with local authorities. If required relocate licence plate to an alternate location.

Further VFPS Notes:

- a) Do not attach VFPS to the vehicle using anchorages not intended for this purpose (e.g. engine mounting bolts).
- b) Do not use this product for any vehicle make or model, other than those specified by the VFPS manufacturer.
- c) Do not remove the plaque or label from the VFPS.
- d) Do not modify the structure of the VFPS in any way.
- e) No accessory or fitment should project forward of the VFPS forward profile.
- f) **ENSURE THESE INSTRUCTIONS ARE LEFT WITH VEHICLE OWNER AND/OR OPERATOR.**

IMPORTANT INFORMATION

Periodically check bolts and nuts for correct tightness, especially if travelling on rough roads



East Coast Bullbars (ECB Pty Ltd)

Tel: 07 3897 5700

Fax: 07 3283 1168

ecb@ecb.com.au www.ecb.com.au

29 Snook St
Clontarf QLD 4019
Australia

Po Box 122
Margate QLD 4019
Australia

WORLD'S BEST
ALLOY BULLBARS

FITTING KIT

1 – Pair ECB steel mounting brackets	2 – 8 gauge x 1 PK screws
1 – Centre under body guard	2 – black plastic screw covers (2 piece, top and bottom)
1 – Pair side under body guards	15 – M6 x 20 bolts
6 – ½ x 1 ½ bolts	28 – M6 flat washers
4 – ½ x 1 ¼ bolts	2 – M6 spring washers
20 – ½ flat washers	2 – M6 nuts
10 – ½ spring washers	13 – M6 nyloc nuts
10 – ½ nuts	6 - 12-14 hex head self tapping screws
3 – 3/8 x 1 ¼ bolt and washer on 300mm wire	1 – ECB LED Indicator / Park light kit
4 – 3/8 x 1 ¼ bolts	1 - Quick Click Indi / Park kit (IC11AMARLED100H)
11 – 3/8 flat washers	1 – ECB Fog light kit
7 – 3/8 spring washers	2 – ECB fog light surrounds
7 – 3/8 nuts	1 – Quick Click fog wiring kit (IC07LC791004ECBH)
3 – M8 x 30 bolts	2 – 120mm lengths 3mm clip lock trim
5 – M8 flat washers	1 – 2400mm length 6mm clip lock trim
3 – M8 spring washers	10 – 150mm zip ties
2 – M8 nuts	4 – 22mm black plastic button plugs



Figure 1: Remove riveted nut (nutsert)

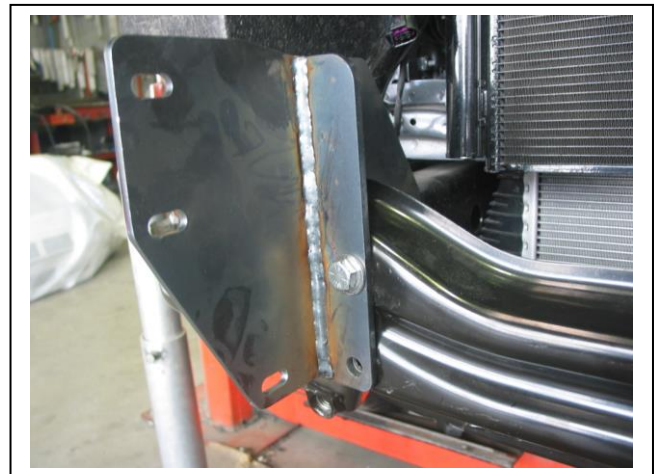


Figure 2: Rear leg fitment to inside of chassis rail.

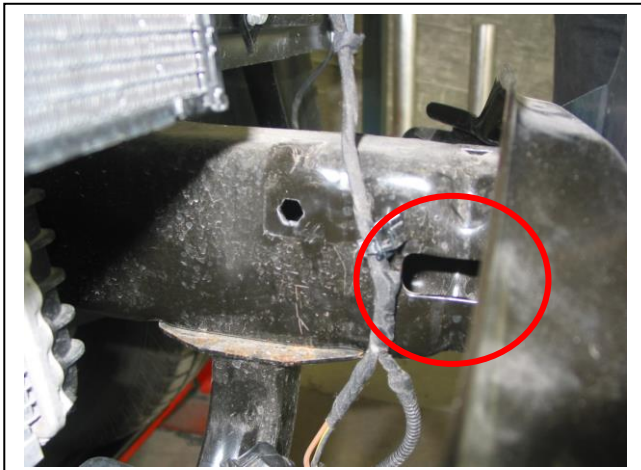


Figure 3: Opening in front of chassis rail

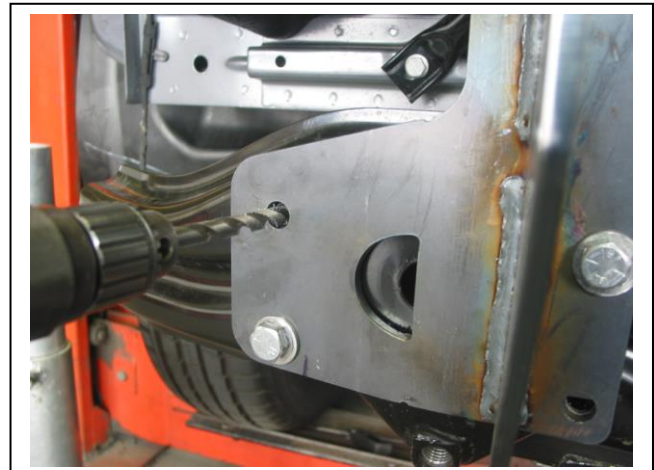


Figure 4: Drill two holes in front of each mount



East Coast Bullbars (ECB Pty Ltd)

Tel: 07 3897 5700

Fax: 07 3283 1168

ecb@ecb.com.au www.ecb.com.au

29 Snook St
Clontarf QLD 4019
Australia

Po Box 122
Margate QLD 4019
Australia

WORLD'S BEST
ALLOY BULLBARS

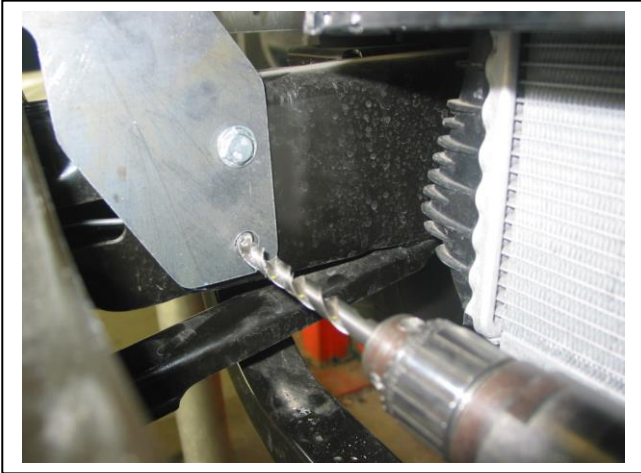


Figure 5: Drill one 10mm hole in rear leg of each mount

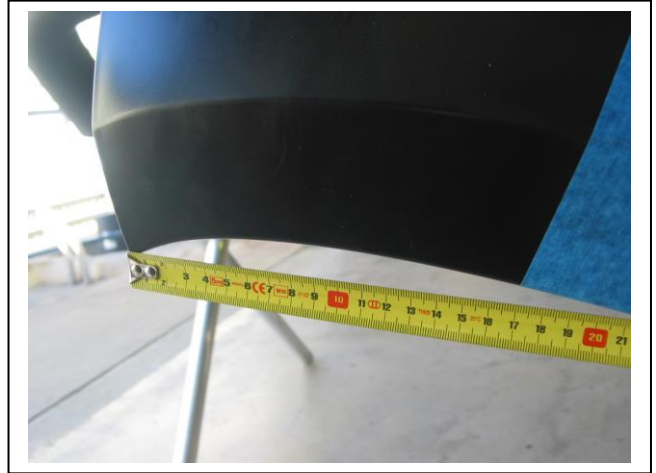


Figure 6: Measure rear of plastic bumper 170mm to top of 50mm tape line



Figure 7: Centre of grille cut at top and removed.



Figure 8: Cut side of grille under second rib. Retain thermo sensor mounting point.

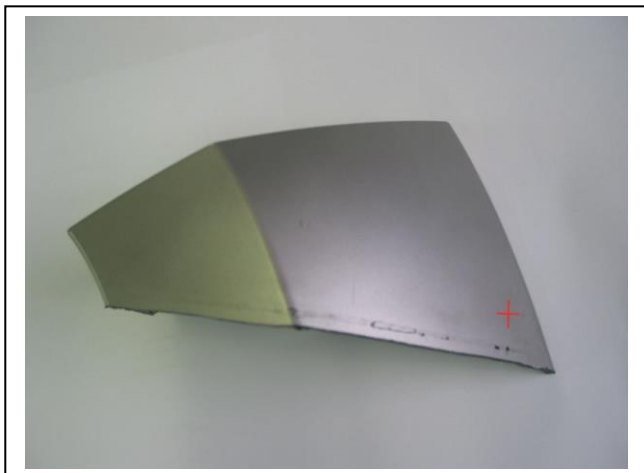


Figure 9: Use template to measure and cut flare to size. Affix to bumper at red crossed point.

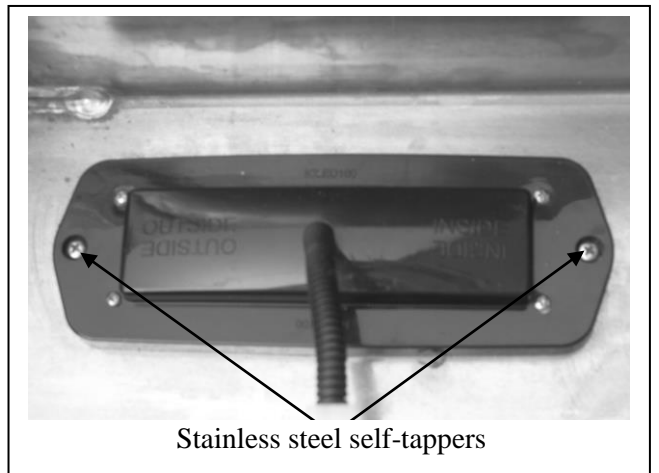


Figure 10



East Coast Bullbars (ECB Pty Ltd)

Tel: 07 3897 5700

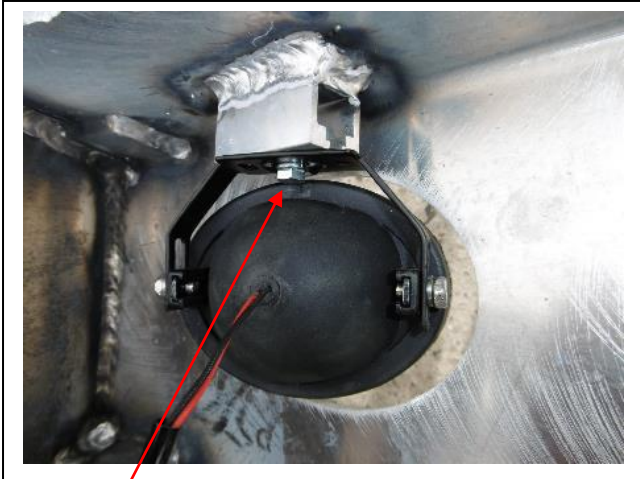
Fax: 07 3283 1168

ecb@ecb.com.au www.ecb.com.au

29 Snook St
Clontarf QLD 4019
Australia

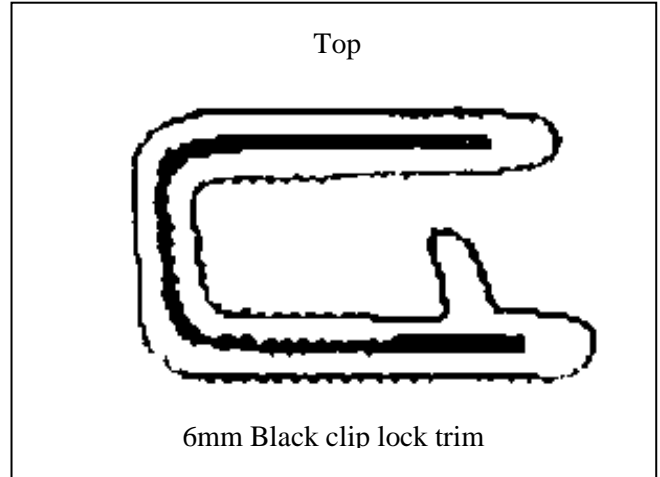
Po Box 122
Margate QLD 4019
Australia

WORLD'S BEST
ALLOY BULLBARS



M6 Bolt

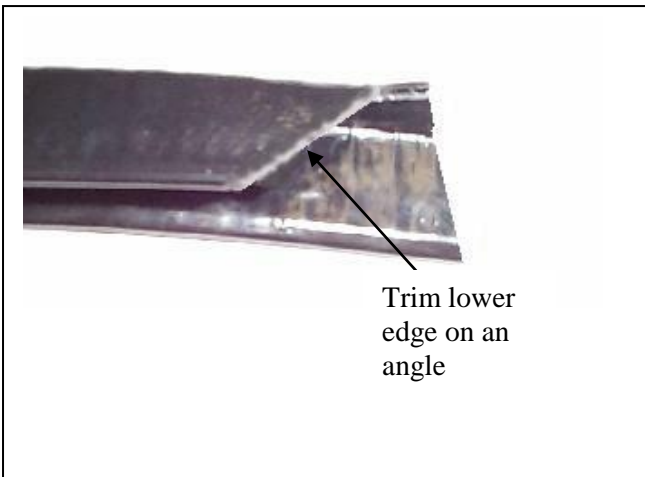
Figure 11



Top

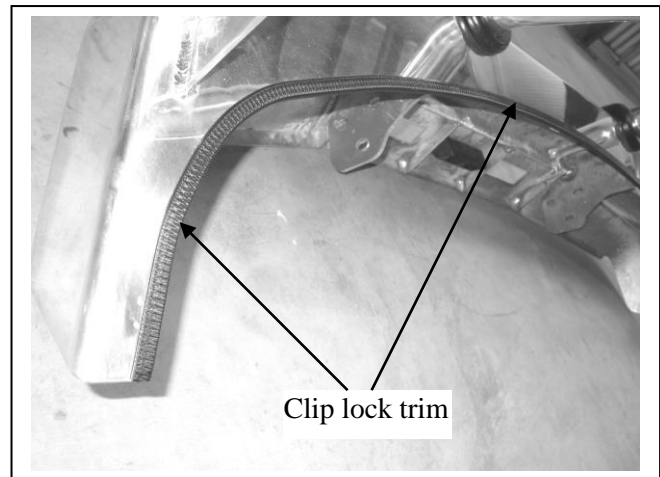
6mm Black clip lock trim

Figure 12



Trim lower
edge on an
angle

Figure 13



Clip lock trim

Figure 14

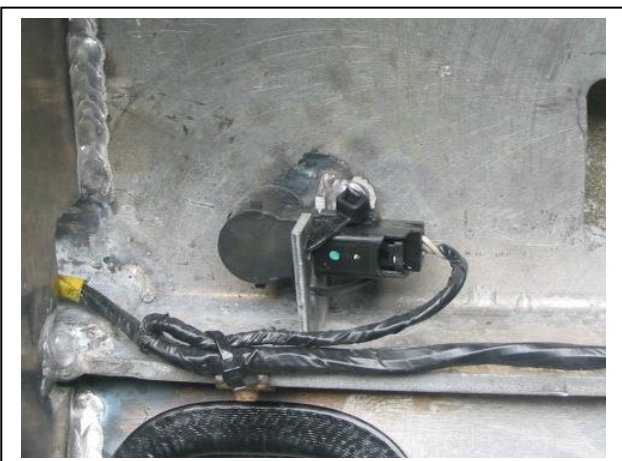


Figure 15: Parking sensor finish mounted.



Figure 16: Front view



East Coast Bullbars (ECB Pty Ltd)

Tel: 07 3897 5700

Fax: 07 3283 1168

ecb@ecb.com.au www.ecb.com.au

WORLD'S BEST
ALLOY BULLBARS

29 Snook St
Clontarf QLD 4019
Australia

Po Box 122
Margate QLD 4019
Australia

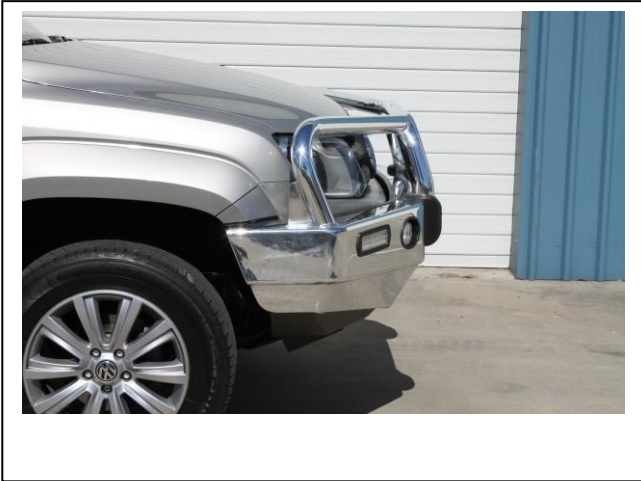


Figure 17: Side view



Figure 18: Centre under body guard.



Figure 19: Side under body guard.



Figure 20: Drill underbody guard hole to 6mm



Figure 21: Cut line for inner guard. Attach using three self tapping screws.



**WORLD'S BEST
ALLOY BULLBARS**

East Coast Bullbars (ECB Pty Ltd)

Tel: 07 3897 5700

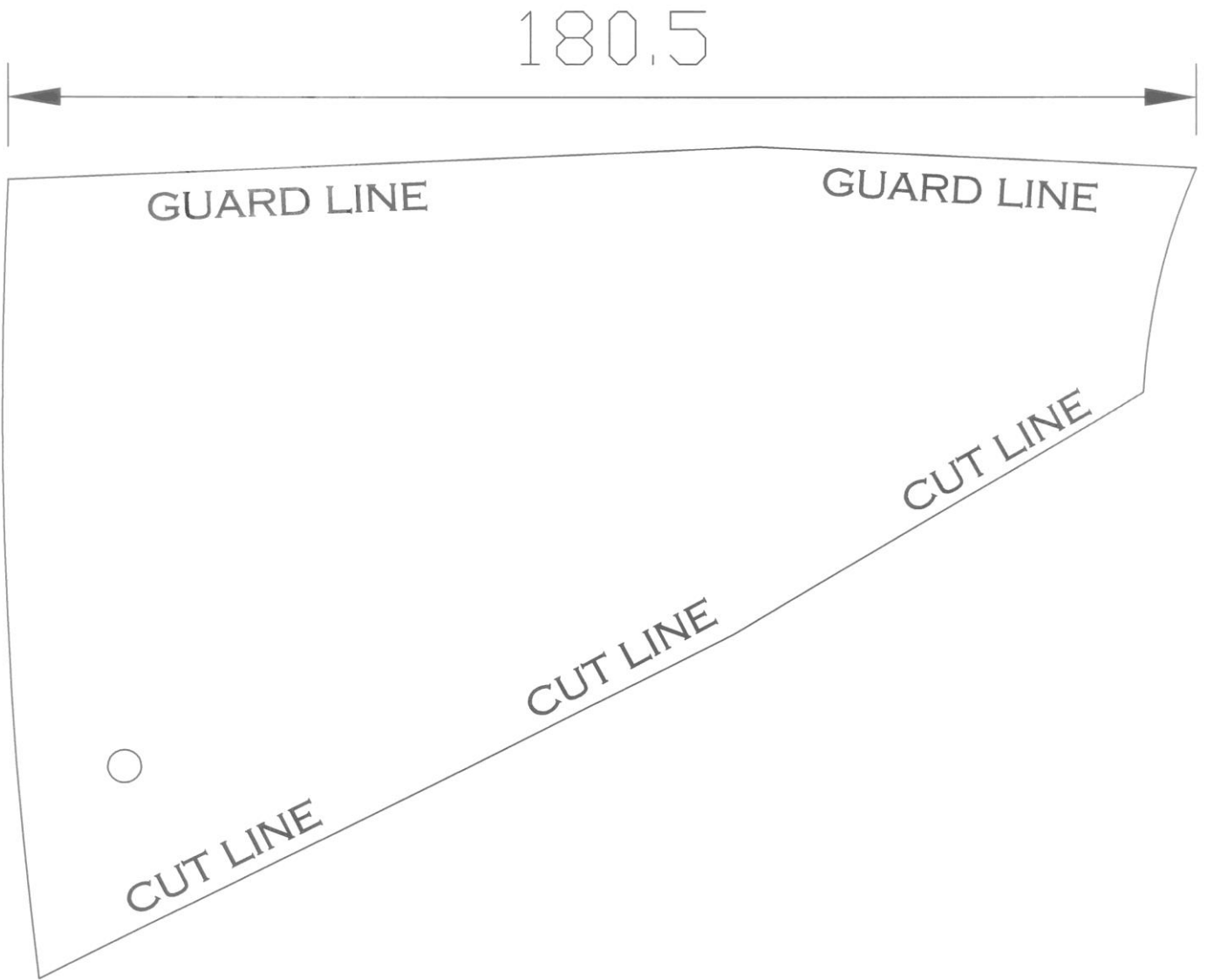
Fax: 07 3283 1168

ecb@ecb.com.au www.ecb.com.au

29 Snook St
Clontarf QLD 4019
Australia

Po Box 122
Margate QLD 4019
Australia

Flare template.





**WORLD'S BEST
ALLOY BULLBARS**

East Coast Bullbars (ECB Pty Ltd)

Tel: 07 3897 5700

Fax: 07 3283 1168

ecb@ecb.com.au www.ecb.com.au

29 Snook St
Clontarf QLD 4019
Australia

Po Box 122
Margate QLD 4019
Australia



**WORLD'S BEST
ALLOY BULLBARS**

East Coast Bullbars (ECB Pty Ltd)

Tel: 07 3897 5700

Fax: 07 3283 1168

ecb@ecb.com.au www.ecb.com.au

29 Snook St
Clontarf QLD 4019
Australia

Po Box 122
Margate QLD 4019
Australia

We value your comments

Dear Fitter,

ECB would like to know how you went with the installation of this product. We value your comment and may need to contact you to clarify some details so please complete your contact details clearly.

We would appreciate if you could complete as many of the following details as possible.

Your Name:	Your contact No.
Product Part No.	Product Invoice No.
Product Description:	Make, model, and year of vehicle:
Product Work Order No.	Company your from/Company product purchased from:

Date of Fitment: ____/____/____

Was the fitting hardware supplied complete? Yes No

If no what was not supplied

Did the installation go well? Yes No

Please provide comments

Please draw diagrams if you need to.

Post to
Reply Paid 122
PO Box 122
Margate QLD 4019

Fax to
(07) 3283 1168



**WORLD'S BEST
ALLOY BULLBARS**

East Coast Bullbars (ECB Pty Ltd)

Tel: 07 3897 5700

Fax: 07 3283 1168

ecb@ecb.com.au www.ecb.com.au

29 Snook St
Clontarf QLD 4019
Australia

Po Box 122
Margate QLD 4019
Australia



WORLD'S BEST
ALLOY BULLBARS

East Coast Bullbars (ECB Pty Ltd)

Tel: 07 3897 5700

Fax: 07 3283 1168

ecb@ecb.com.au www.ecb.com.au

29 Snook St
Clontarf QLD 4019
Australia

Po Box 122
Margate QLD 4019
Australia

DESPATCH CHECKLIST EAV42SY

ICZBKCV42



Work Order #	
Finish:	
Transport:	
Due Date:	

- OC.....1 – Pair Steel mounting brackets.
- OC.....1 – centre under body guard (P/C black)
- OC.....1 – Pair side under body guard (P/C black)
- BK.....1 – Bolt Kit.
- BK.....1 – LED ECB indicator / park light kit.
- BK.....1 – Quick Click Indi / Park kit (IC11AMARLED100H)
- BK.....1 – fog light kit
- BK.....1 - Quick Click Fog kit (IC07LC791004ECBH)
- BK.....2 – fog light surrounds
- BK.....1 – 2400mm length 6mm clip lock
- BK.....2 – 120mm length 3mm clip lock
- OC.....2 – ECB Overrides – **Fitted to Bar**
- OC.....7 – 6mm Air Vents – **channel vents only Fitted to Bar**

**See other side of
this page for
photos of all
mounts**



Is this product “the best it can be” Yes _____ / _____
Wrapper’s initials / Checker initials

If **NO** fix before continuing

All parts checked and completed by:

Nut and bolts: _____ Date __/__/__

Order control: _____ Date __/__/__

Final wrap check: _____ Date __/__/__



East Coast Bullbars (ECB Pty Ltd)

Tel: 07 3897 5700

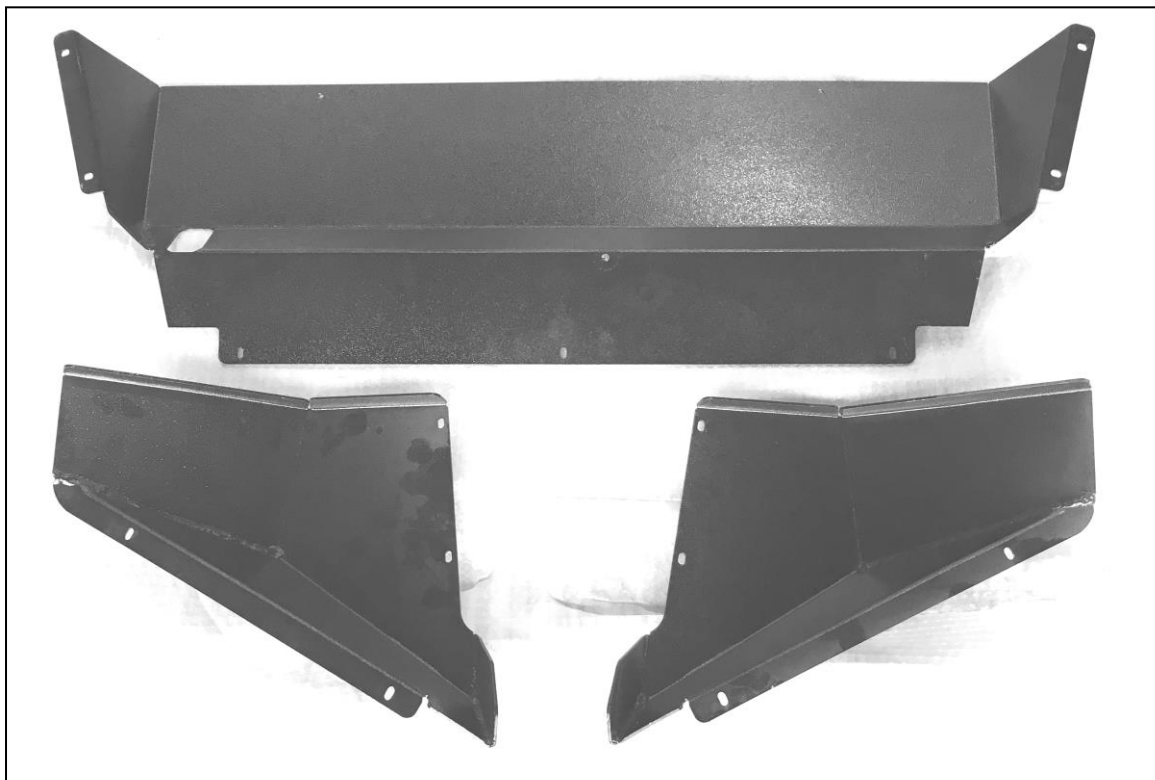
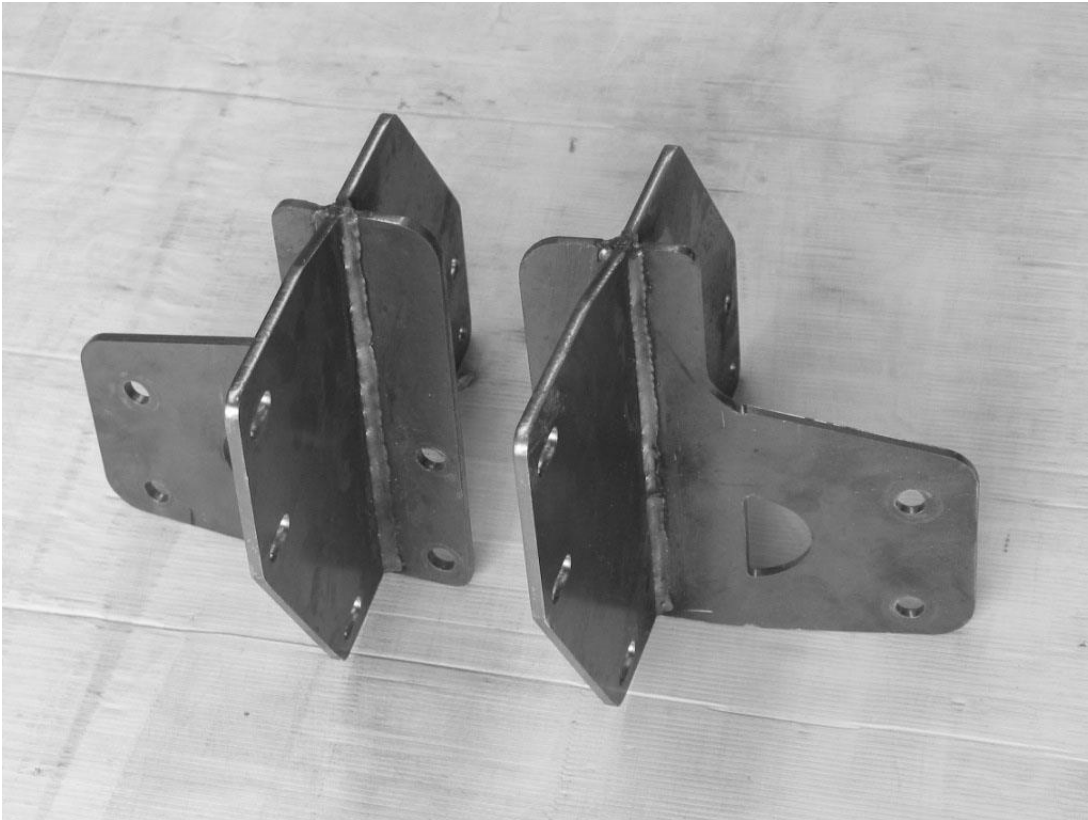
Fax: 07 3283 1168

ecb@ecb.com.au www.ecb.com.au

29 Snook St
Clontarf QLD 4019
Australia

Po Box 122
Margate QLD 4019
Australia

WORLD'S BEST
ALLOY BULLBARS



Wrapper's initials / Checker initials