



**WORLD'S BEST
ALLOY BULLBARS**

East Coast Bullbars (ECB Pty Ltd)

Tel: 07 3897 5700

Fax: 07 3283 1168

ecb@ecb.com.au www.ecb.com.au

29 Snook St
Clontarf QLD 4019
Australia

Po Box 122
Margate QLD 4019
Australia

EAT213SY,

FITTING INSTRUCTIONS

REPLACES: 08.04.16

REVISED: 22.06.16

TOYOTA HILUX 5-15 ON (wide body LED headlights) ECB WINCH COMPATIBLE ARC BAR with fog lights VEHICLE FRONTAL PROTECTION SYSTEM (VFPS) FOR AIR BAG & ADR COMPLIANT VEHICLES

Check installation hardware before commencing

1. Lift bonnet.
2. Remove eight plastic push pull clip from top panel between headlights and remove panel. **See figure 1.**
3. From top of grille, remove four 10mm head bolts. **See figure 2.**
4. Remove three 10mm head bolts from top of bumper behind grille.
5. From bumper behind grille, remove two plastic push pull clips. **See figure 3.**
6. Remove nine 10mm head bolts from underside of bumper, remove two plastic push pull clips from wheel arch per side, pull outwards on bumper wing to unclip from guard. Disconnect fog lights if required and slide bumper forward from vehicle.
7. Remove plastic bumper stiffener, three 10mm head bolts and left and right hand air ducts, 3 push pull plastic clips (per side). **See figure 4.**
8. Remove plastic cushioning from front of bumper reinforcement by pulling it forward from vehicle to release christmas tree clips.
9. Remove two 14mm head bolts from bumper reinforcement (per side) and remove reinforcement.
10. Remove lower plastic from under radiator, two 10mm head bolts and 5 push pull clips.
11. Fit ECB winch cradle onto end of chassis rail and fix with two original bolts and two M10 x 40mm bolts, flat washers, spring washers and nuts into front of rail (per side). (finger tighten only). From outside of chassis rail, install two M10 x 100mm bolts, flat washers into tow hook and steel mount through chassis rail, slide spacer tubes onto bolts then fit winch cradle gusset onto bolts, fix with flat washers, spring washers and nuts. **See figure 5.** In rear hole of ECB steel tow hook, install 6mm alloy washer between tow hook and chassis rail, fix using one M12 x 4mm bolt, spring washer and flat washer (supplied)(per side). Centralize cradle to vehicle body. Align and tighten all bolts.
12. Install fairlead roller to front of ECB winch frame using bolts supplied with winch. **Finger tighten only.**
13. Install control box mount (supplied) to rear of control box using bolts / nuts supplied with winch.
14. Install winch into ECB winch frame using bolts supplied with winch. Attach control box to winch using two worm drive hose clamps (supplied) for Warn control box mount and Mean Mother control box mount as per instructions supplied with winch.
15. Mark and trim air dams to fit around steel mounts. **See figure 6.**



**WORLD'S BEST
ALLOY BULLBARS**

East Coast Bullbars (ECB Pty Ltd)

Tel: 07 3897 5700

Fax: 07 3283 1168

ecb@ecb.com.au www.ecb.com.au

29 Snook St
Clontarf QLD 4019
Australia

Po Box 122
Margate QLD 4019
Australia

16. Refit bumper stiffener to vehicle.
17. Check ECB template for correct sizing. Cut ECB template from this instruction using a sharp pair of scissors. Place template on vehicle to establish cut area. Mask cut area to avoid damage to surface of bumper. Using ECB bumper template mark out cut line, check cut line for correct and cut bumper with jigsaw or similar tool.
18. Remove bumper side locator and trim as per **figure 7**. (Each side)
19. Refit bumper locator to vehicle, fix with M6 x 20mm bolt, flat washer and nyloc nut in top front hole. **See figure 8**. (Each side)
20. Refit bumper to vehicle and trim cut line with 3 mm clip lock supplied.
21. Fit ECB LED indicator / park lights into protection bar as per instructions supplied with the LED indicator kit. (Insure light is correct way up) **See figure 9**.
22. Attach ECB fog lights to protection bar. Place M6 x 20 bolts, spring washers (supplied) through light mount from inside and attach nut to top. Slide assembly into light mount in Protection bar and centralize light to hole. **TIGHTEN FIRM ONLY. See figure 10.**
23. Disconnect indicator and parking lights on vehicle. Install ECB quick click wiring harnesses (supplied) between disconnected harness and indicator / park lights on vehicle. Run wiring out from under lights ensuring clearance from sharp edges and moving parts.
24. Connect ECB Quick Click fog light wiring harness (supplied) into original wiring harness.
25. Attach 6mm clip lock trim (supplied) to top of ECB protection bar. **See figure 11, 12, 13.**
26. Install ECB protection bar onto steel mount using three M12 x 40mm bolts, flat washers, spring washers and nuts (per side). Align protection bar to front of vehicle and tighten all bolts. **See figure 14 and 15.**
27. Using ECB back stop supplied (TO AVOID DAMAGE TO RADIATORS) drill outer holes in stone tray to 8mm. **See figure 16.**
28. Install ECB centre under body guard using three M5 x 20mm Philips head bolts, flat washers and nyloc nuts in front holes, M6 x 25mm bolts, flat washers and nyloc nuts in rear holes.
29. Install ECB side under body guards using two M5 x 20mm Philips head bolts, flat washers and nyloc nuts in front holes, M6 x 25mm bolts, flat washers and nyloc nuts in rear hole. (Each side)
30. Mark and trim liner to fit under body guard. **See figure 17.**
31. Trim sides of liner to tuck in behind channel end. Fix liner to under body guard with 8mm self drilling screws. (Pilot hole is recommended)

ENSURE NUMBER PLATE IS CLEARLY VISABLE

Note: When fitting/refitting the licence plate to the vehicle, ensure there is no obstruction to licence plate vision in accordance with local authorities. If required relocate licence plate to an alternate location.



**WORLD'S BEST
ALLOY BULLBARS**

East Coast Bullbars (ECB Pty Ltd)

Tel: 07 3897 5700

Fax: 07 3283 1168

ecb@ecb.com.au www.ecb.com.au

29 Snook St
Clontarf QLD 4019
Australia

Po Box 122
Margate QLD 4019
Australia

Further VFPS Notes:

- a) Do not attach VFPS to the vehicle using anchorages not intended for this purpose (e.g. engine mounting bolts).
- b) Do not use this product for any vehicle make or model, other than those specified by the VFPS manufacturer.
- c) Do not remove the plaque or label from the VFPS.
- d) Do not modify the structure of the VFPS in any way.
- e) No accessory or fitment should project forward of the VFPS forward profile.
- f) **ENSURE THESE INSTRUCTIONS ARE LEFT WITH VEHICLE OWNER AND/OR OPERATOR.**

IMPORTANT INFORMATION

Periodically check bolts and nuts for correct tightness, especially if travelling on rough roads

FITTING KIT

1 – ECB winch frame	28 – M6 flat washers
2 – Winch cradle gussets	2 – M6 spring washers (for fog lights)
2 – Tow hooks	7 – M6 nyloc nuts
1 – Centre under body guard	2 – M6 nuts
1 - Pair side under body guards	7 – M5 x 20 bolts
4 – 10 NB steel tubes 53mm long	8 – M5 nyloc nuts
2 – Alloy 40 x 6mm washers	4 – 8-10 gauge self tapping screws
1 – ECB back stop plate	1 – ECB LED Indicator/Park light/DRL kit (ICLED105)
12 – M12 x 1.25 x 40mm bolts	1 – ECB Quick Click harness (IC15TOHLHIPDH)
22 – M12 flat washers	1 – ECB 35w fog light kit (IC10035ECB)
12 – M12 spring washers	1 – ECB Quick Click kit (IC10D40S1004ECBH)
12 – M12 nuts	3 – 6mm air vent
4 – M 10 x 1.5 x 100mm bolts	4 – Fog light surrounds
4 – M10 x 1.5 x 40mm bolts	2 – 6 mm clips lock 900 mm long
16 – M10 flat washers	1 – 6 mm clips lock 650mm long
8 – M10 spring washers	2 – 3 mm clips lock 1200mm long
8 - M10 nuts	1 – Warn control box mount
4 – M6 x 20 bolts	1 – Mean mother control box mount
5 – M6 x 25 bolts	2 – Worm drive hose clamps

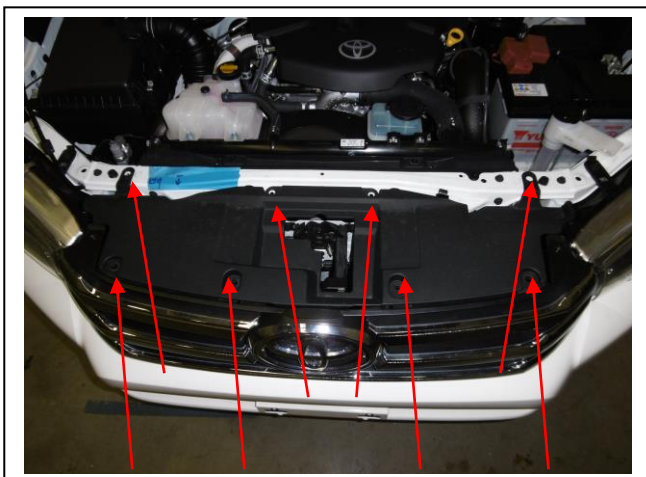


Figure 1

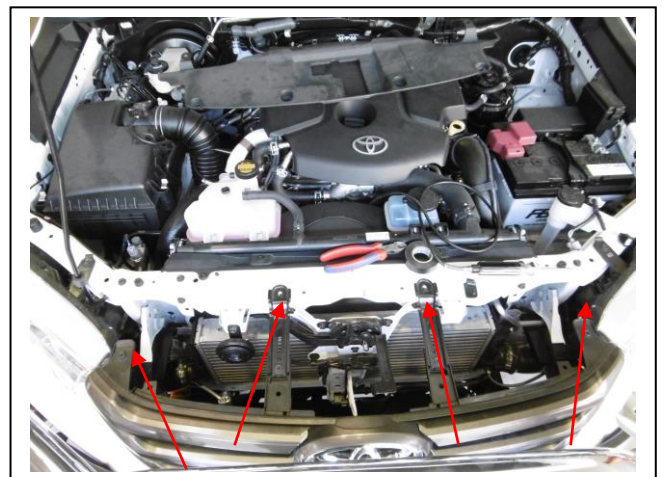


Figure 2



East Coast Bullbars (ECB Pty Ltd)

Tel: 07 3897 5700

Fax: 07 3283 1168

ecb@ecb.com.au www.ecb.com.au

WORLD'S BEST
ALLOY BULLBARS

29 Snook St
Clontarf QLD 4019
Australia

Po Box 122
Margate QLD 4019
Australia

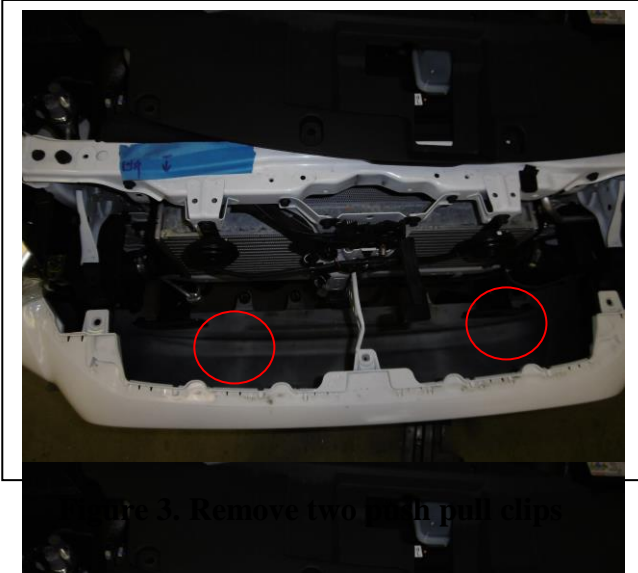


Figure 3. Remove two push pull clips

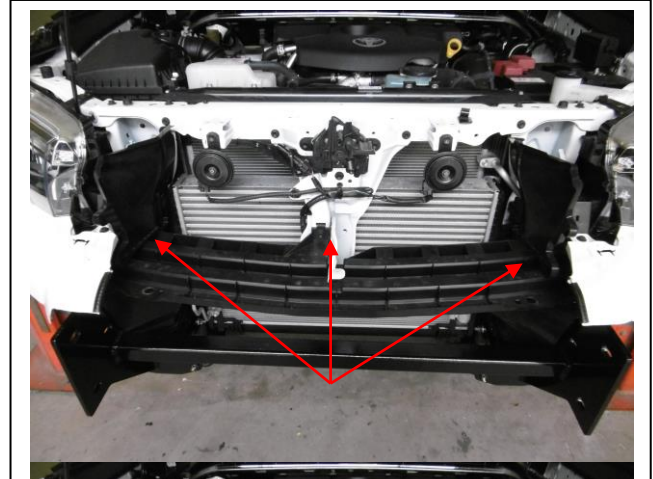


Figure 6. Trim air dam to fit around winch cradle

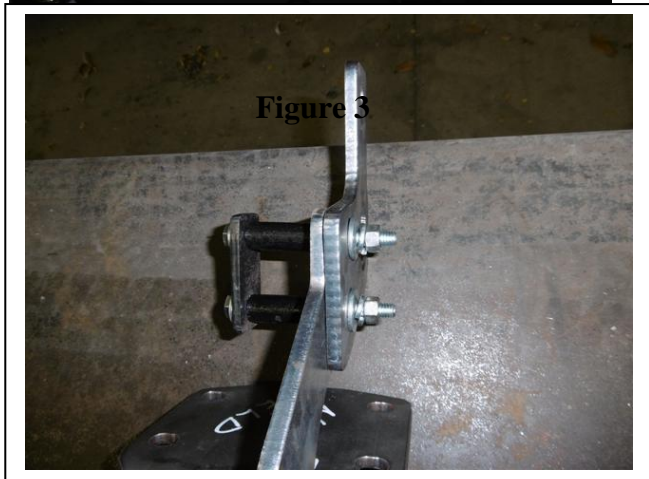


Figure 5. Configuration of components

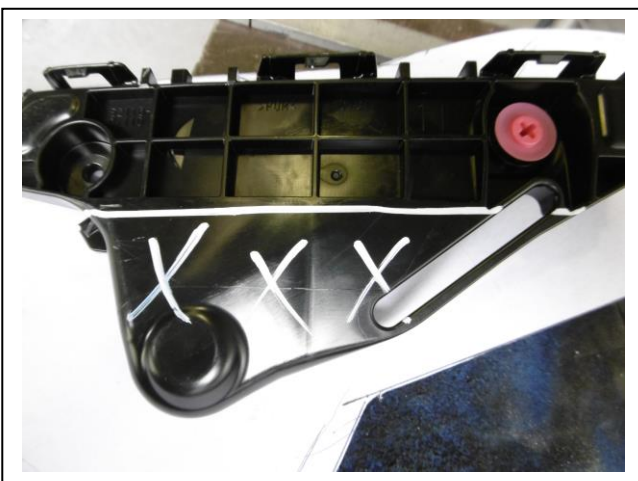


Figure 7. locater trim line

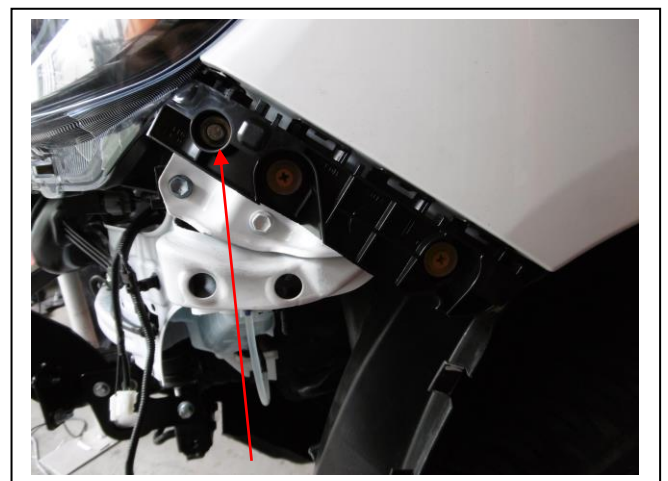


Figure 8. M6 bolt in locater fitted



East Coast Bullbars (ECB Pty Ltd)

Tel: 07 3897 5700

Fax: 07 3283 1168

ecb@ecb.com.au www.ecb.com.au

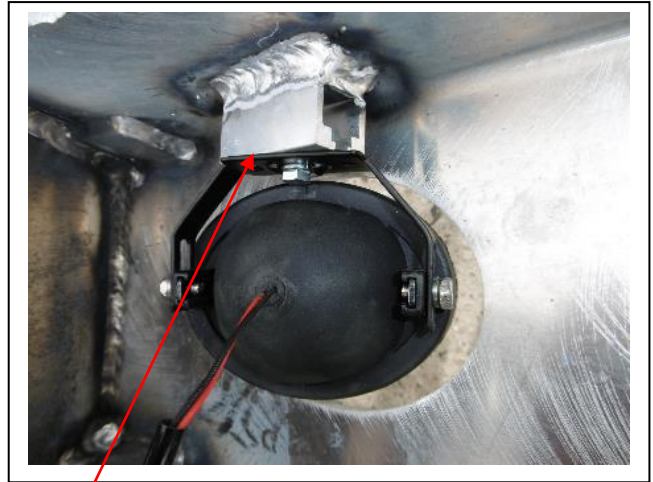
29 Snook St
Clontarf QLD 4019
Australia

Po Box 122
Margate QLD 4019
Australia

WORLD'S BEST
ALLOY BULLBARS

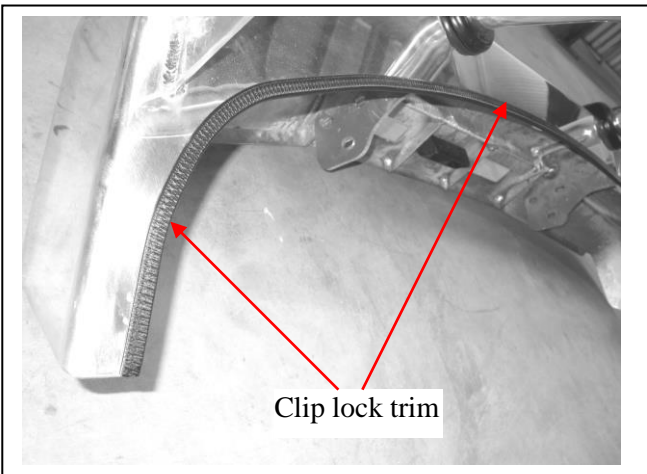


Figure 9.



M6 bolt

Figure 10



Clip lock trim

Figure 11.

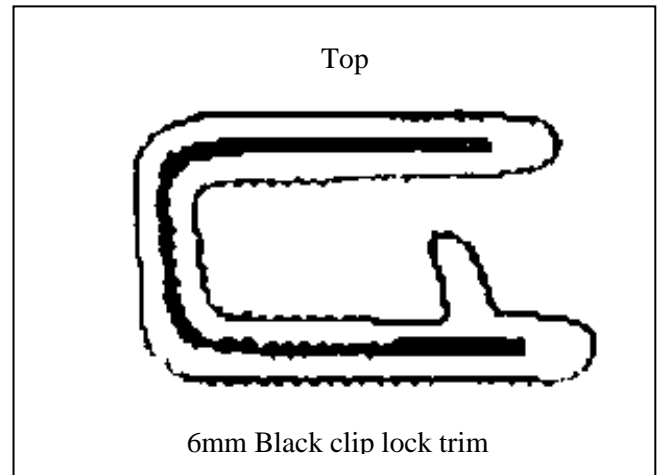
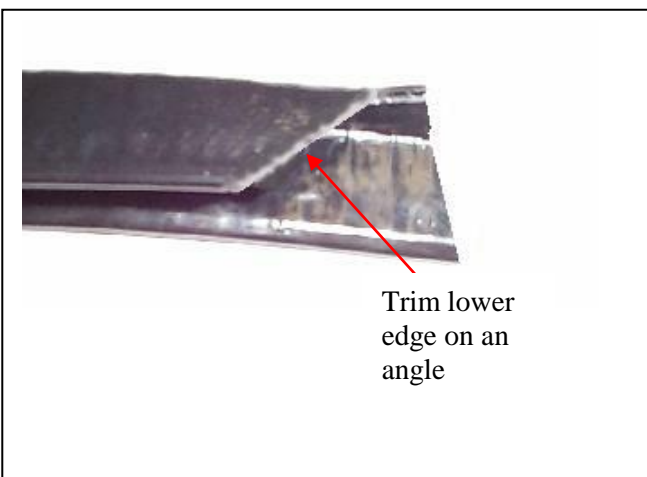


Figure 12.



Trim lower
edge on an
angle

Figure 13.



Figure 14.



East Coast Bullbars (ECB Pty Ltd)

Tel: 07 3897 5700

Fax: 07 3283 1168

ecb@ecb.com.au www.ecb.com.au

29 Snook St
Clontarf QLD 4019
Australia

Po Box 122
Margate QLD 4019
Australia

WORLD'S BEST
ALLOY BULLBARS



Figure 15.

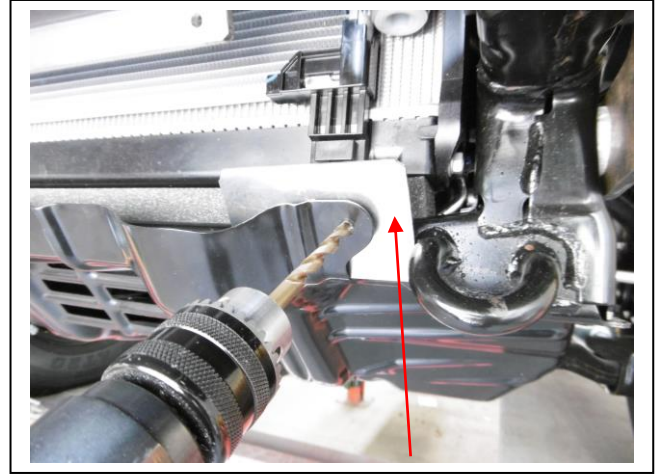


Figure 16. Back stop to protect radiators while drilling

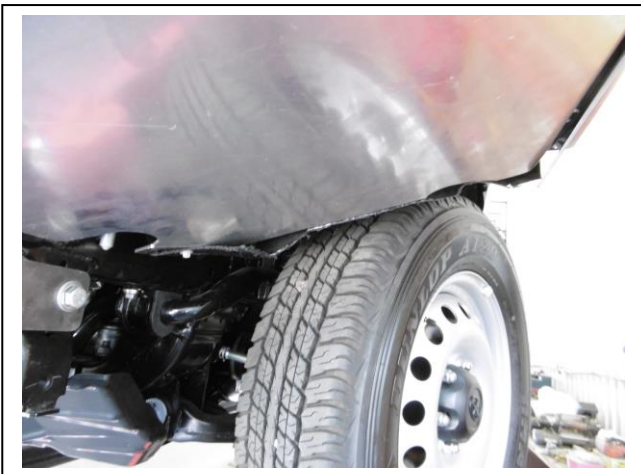


Figure 17. Liner trimmed to fit

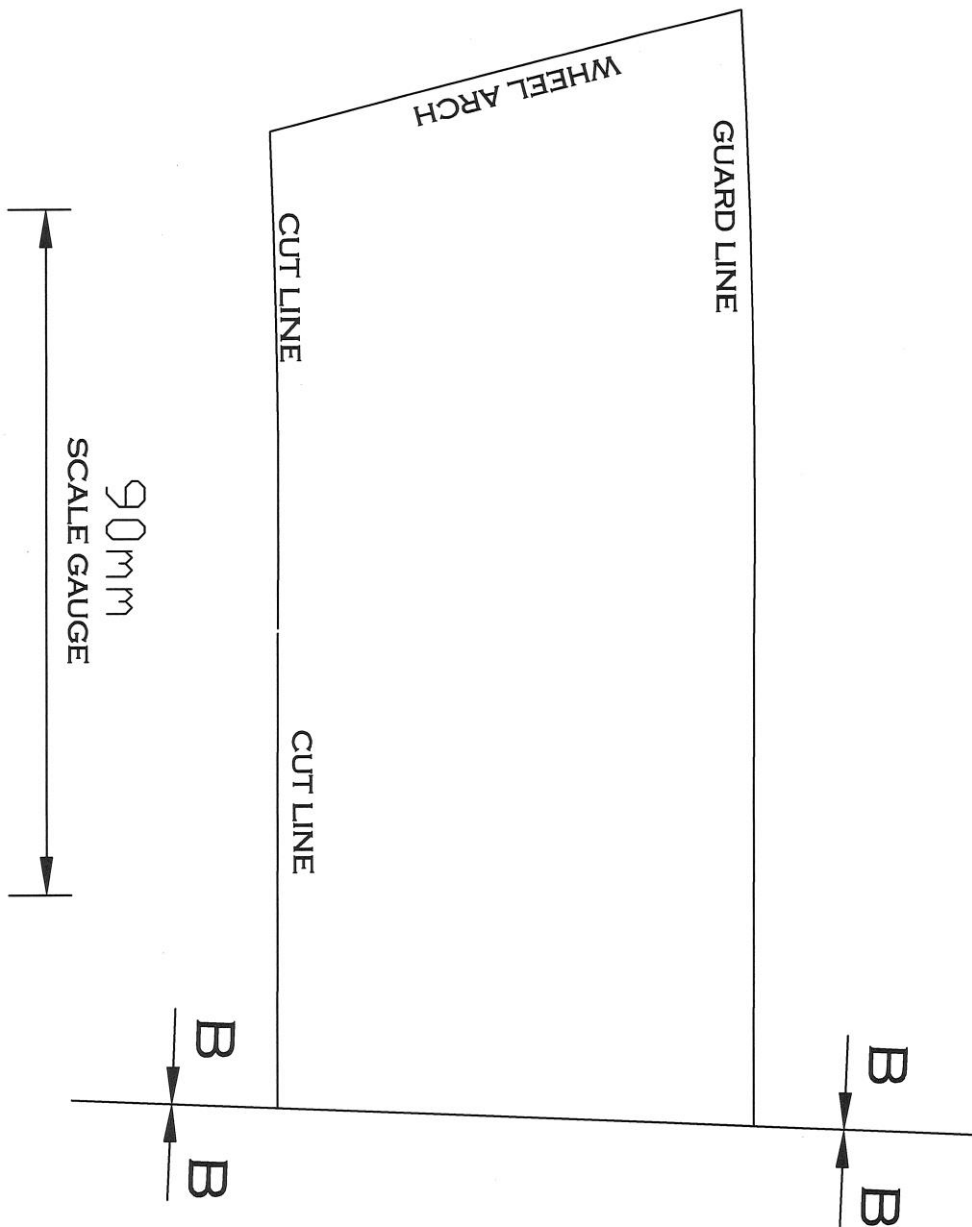


Template Placement



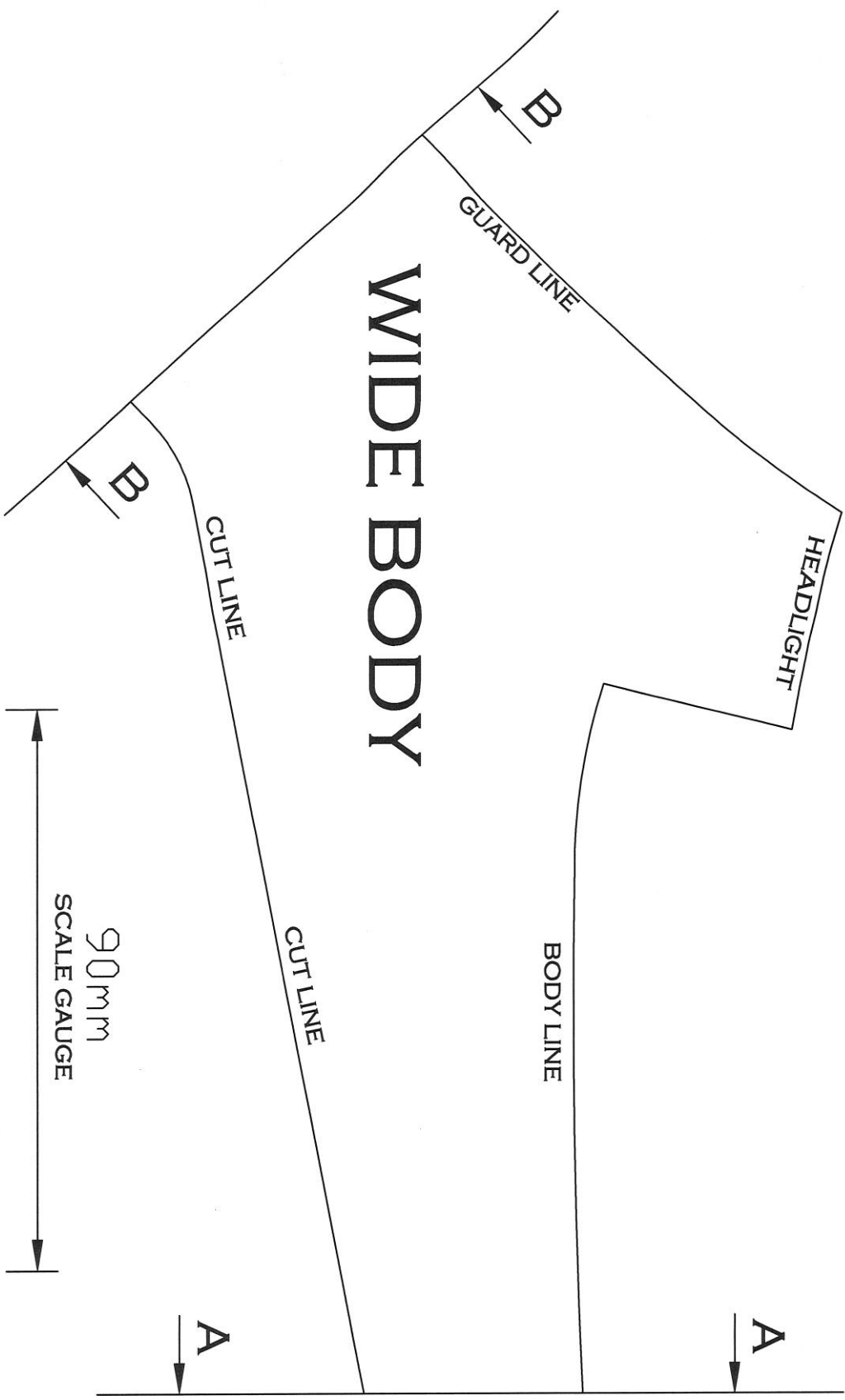
WIDE BODY TEMPLATE PART A

Template Placement



Template Placement

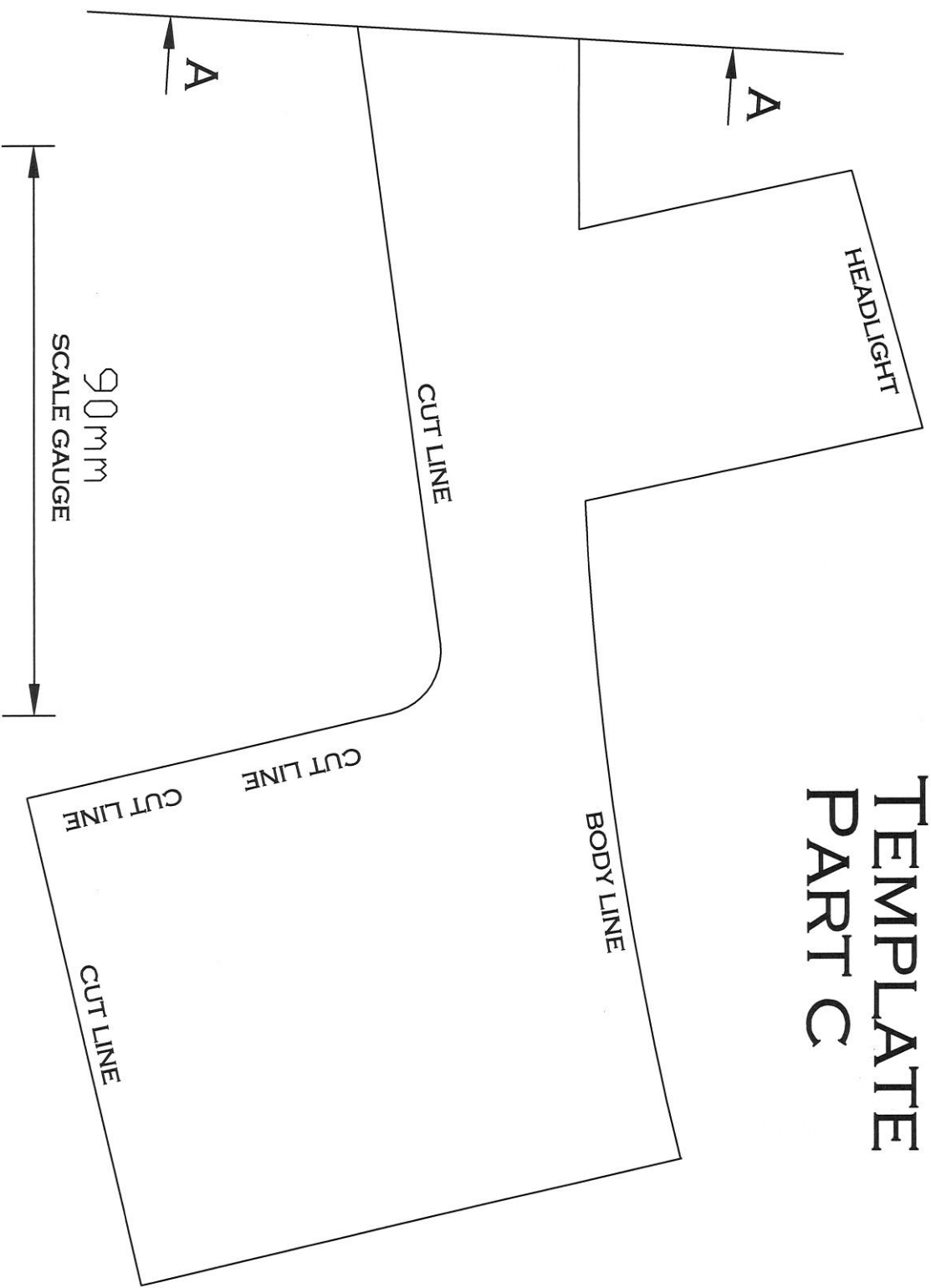
WIDE BODY TEMPLATE PART B



90mm
SCALE GAUGE



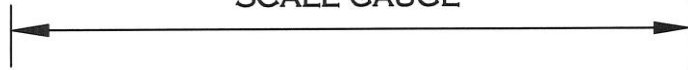
WIDE BODY TEMPLATE PART C





GRILLE END TEMPLATE

90mm
SCALE GAUGE







**WORLD'S BEST
ALLOY BULLBARS**

East Coast Bullbars (ECB Pty Ltd)

Tel: 07 3897 5700

Fax: 07 3283 1168

ecb@ecb.com.au www.ecb.com.au

29 Snook St
Clontarf QLD 4019
Australia

Po Box 122
Margate QLD 4019
Australia

We value your comments

Dear Fitter,

ECB would like to know how you went with the installation of this product. We value your comment and may need to contact you to clarify some details so please complete your contact details clearly.

We would appreciate if you could complete as many of the following details as possible.

Your Name:	Your contact No.
Product Part No.	Product Invoice No.
Product Description:	Make, model, and year of vehicle:
Product Work Order No.	Company your from/Company product purchased from:

Date of Fitment: ____/____/____

Was the fitting hardware supplied complete?

Yes

No

If no what was not supplied

Did the installation go well?

Yes

No

Please provide comments

Please draw diagrams if you need to.

Post to
Reply Paid 122
PO Box 122

Fax to
(07) 3283 1168



WORLD'S BEST
ALLOY BULLBARS

East Coast Bullbars (ECB Pty Ltd)

Tel: 07 3897 5700

Fax: 07 3283 1168

ecb@ecb.com.au www.ecb.com.au

29 Snook St
Clontarf QLD 4019
Australia

Po Box 122
Margate QLD 4019
Australia

DESPATCH CHECKLIST EAT213SY

Work Order #		See other side of this page for photos of all mounts
Finish:		
Transport:		
Due Date:		

OC.....1 – Winch cradle.

OC.....2 – Tow hooks

OC 1 – Pair steel brackets

OC.....1 - Pair side under body guards

OC.....1 – Centre under body guard (small)

BK.....1 – Bolt Kit.

BK.....1 – indicator / park kit/DRL – (ICLED105)

BK.....1 – Quick click harness (IC15TOHLHIPDH)

BK.....1 – ECB fog light kit 35W – (IC10035ECB)

BK.....1 – ECB Quick Click Kit (IC10D40S1004ECBH)

OC.....1 – Pair ECB overrides (fitted to bar)

OC.....4 – 6mm air scoops (fitted to bar, skirt only ECB to bottom)

BK.....4 – Fog light surrounds

OC 3 – 6mm air scoops

_____/_____
Wrapper's initials / Checker initials



Is this product “the best it can be” Yes
If **NO** fix before continuing

All parts checked and completed by:

Nut and bolts: _____ Date __/__/__

Order control: _____ Date __/__/__

Final wrap check: _____ Date __/__/__



**WORLD'S BEST
ALLOY BULLBARS**

East Coast Bullbars (ECB Pty Ltd)

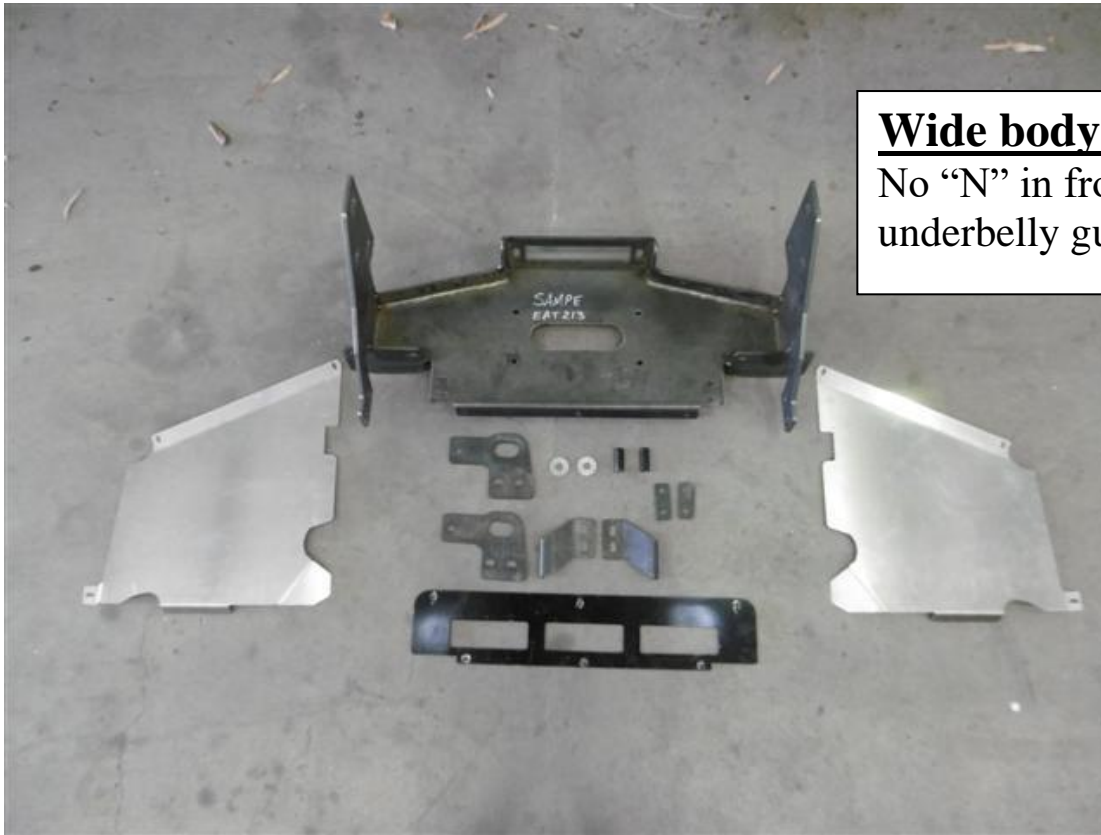
Tel: 07 3897 5700

Fax: 07 3283 1168

ecb@ecb.com.au www.ecb.com.au

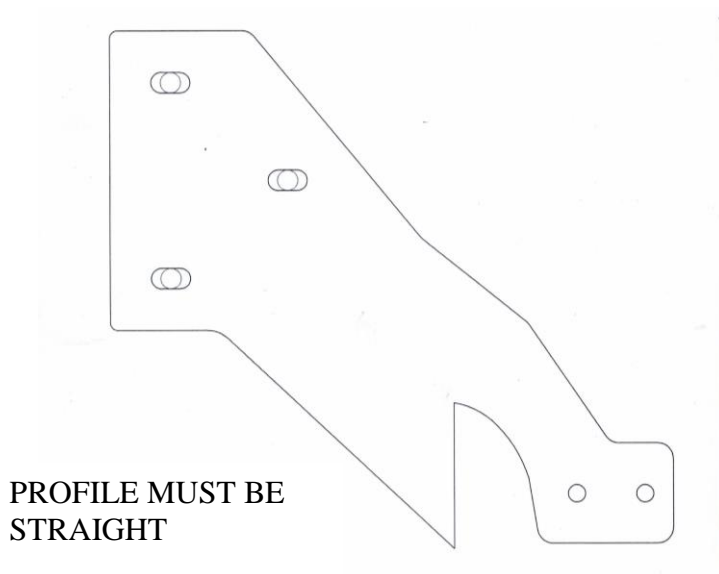
29 Snook St
Clontarf QLD 4019
Australia

Po Box 122
Margate QLD 4019
Australia



Wide body
No "N" in front of
underbelly guard

Wrapper's initials / Checker initials



**PROFILE MUST BE
STRAIGHT**