

## EAT112SY

REPLACES: 18.09.12  
REVISED: 16.01.18

### FITTING INSTRUCTIONS

**TOYOTA LANDCRUISER 200 SERIES 06/12-12/15  
VX and Sahara models with PARKING SENSORS  
ECB ARC™ PROTECTION BAR with FOG LIGHTS  
Warn winch and Mean Mother compatible  
VEHICLE FRONTAL PROTECTION SYSTEM (VFPS)  
FOR AIR BAG & ADR COMPLIANT VEHICLES**

Check installation hardware before commencing.  
Special tools: T30 Torx bit with suitable driver.

1. Check size of templates as size may vary according to printer. Using a sharp pair of scissors, accurately cut templates (supplied) from fitting instructions. Mask vehicle from bumper attachment point around bumper so bumper skin is not marked. Hold templates onto vehicle and mark cut line onto bumper skin. Across centre of bumper, measure 55mm above bumper grille and mark line between templates. **See figure 1**
2. Lift bonnet
3. Remove grille and headlamp cover, seven plastic push pull clips.
4. Remove three bolts from top of grille. Directly under outer bolts are two grille clips. Slide finger into hole in front of clip and push retainer to side to release clip. Remove grille as part of bumper.
5. Remove plastic splash guards from around tow points; four 10mm head bolts and one plastic 12mm head nut (per side).
6. Remove bumper and grille assembly. Six 10mm head bolts from underside centre of bumper, three T30 Torx head screws from front of wheel arch (per side), and three push pull clips from behind grille. Pull bumper sides outward to release plastic clips from guard edges and plastic bolt clips on inner guard. Disconnect headlight washers (if fitted), vehicle fog lights (if fitted) and parking sensors (if fitted). **NOTE:** To remove from bumper under headlamp, a small flat blade screwdriver may need to be pushed between plastic bumper and steel retaining clip from underneath guard.
7. Remove polypropylene infill and aluminium bumper support, three 17mm nuts per side accessed from holes in front of support. Remove four 14mm head bolts (per side) from crash cans. Remove crash cans.
8. Remove tow hooks. Two 17mm bolts (per side).
9. Trim plastic radiator surrounds to allow fitment of ECB steel mounting bracket. **See figures 2 and 3.**
10. Slide ECB winch frame (supplied) onto front of chassis rails. Attach using eight M10 nuts, spring washers and flat washers (supplied). **Finger tighten only. See figure 4.**
11. Using two M12 x 55 bolts, spring washers and flat washers per side (supplied), refit original tow hooks, through ECB steel mounting bracket to vehicle. Centralise mounting bracket to body of vehicle. **Tighten all bolts. See figure 5.**
12. Install fairlead rollers to front of winch frame using M12 x 35 bolts, flat washers, spring washers and nuts

13. Install control box mount (supplied) to rear of control box using bolts / nuts supplied with winch. **See figure 6.**  
**Note:** There are two control box brackets supplied with this bar. One to fit the Warn Winch (or similar) control box and Mean Mother angle section which is used with the control box mount included with the winch. Wire winch as per manufacturers instructions.
14. Install winch into ECB winch frame using bolts supplied with winch. **See figure 7.** Attach control box to winch using two worm drive hose clamps (supplied) for Warn control box mount and Mean Mother control box mount as per instruction supplied with winch. **Tighten all bolts. Test winch for correct operation.**
15. Disconnect indicator and parking lights on vehicle. Install ECB quick click wiring harnesses (supplied) between disconnected harness and indicator / park lights on vehicle. Run wiring out from under lights ensuring clearance from sharp edges and moving parts.
16. Remove wiring loom, parking sensors and headlight washer tube from rear of plastic bumper. Mount both hose and wiring to underside of grille mounting panel using five zip ties (supplied). Connect ECB Quick Click fog light wiring harness (supplied) into original wiring harness. **See figure 8.**
17. Using a jigsaw or similar, cut bumper along marked lines. Attach 3mm clip lock trim to cut line of bumper. Trim clip lock ends to suit end of plastic bumper. **See figure 9. WARNING: Cut lines around sides of vehicle do not follow bumper lines.**
18. Refit bumper cover and grille to vehicle. Connect headlight washers (if fitted)
19. Fit Parking sensors into outer holes in ECB Protection bar.
20. Fit ECB LED indicator / park lights (supplied) into protection bar as per instructions supplied with the LED indicator kit. **NOTE: Ensure park light is to outside. See figure 10.**
21. Attach ECB fog lights to protection bar. Place M6 x 20 bolts, spring washers (supplied) through light mount from inside and attach nut to top. Slide assembly into light mount in Protection bar and centralize light to hole. **TIGHTEN FIRM ONLY. See figure 11.**
22. Attach 6mm clip lock trim (supplied) to top centre of ECB protection bar and winch cut out in bar. **See figures 12 & 13.**
23. Attach protection bar to outside of steel mounting brackets using three M12 x 40 bolts (supplied), washers, spring washers and nuts (per side).
24. Align protection bar with approximately 12mm clearance off bumper. **See figures 14 and 15. Tighten all bolts.**
25. Connect ECB indicator/park light, fog light wiring and parking sensors. Ensure wiring is routed in such a manner to avoid any sharp edges etc
26. Check all lights, parking sensors and headlight washers for correct operation.
27. Remove original plastic clips from join of lower bumper and inner guard. Trim plastic clips **See figure 16** and fit to rear edge of side under body guards. (Two per side).
28. Using M6 x 20 bolts, flat washers and nyloc nuts (supplied), attach 3mm alloy under body guard to top of end skirt and underside of lower leg of channel. **Tighten all bolts. See figure 17.**

29. Pushing inner guard into position in wheel arch, drill two holes per side in inner guard aligning with plastic clips on under body guard. Attach inner guards to rear of under body guards using 10mm head original equipment screws.
30. **For vehicles fitted with optional “Hydro Mechanical Semi Active Rollbar”:** On passengers side only: using under body guard as a guide and pushing inner guard up into wheel arch opening, drill hole through inner guard. Bolt inner guard to under body guard using one M6 x 20 bolt, flat washers and nyloc nut. **NOTE:** Bolt must be placed in hole from rear of vehicle. Nut must be to front to stop rubbing on suspension parts. **See figure 18.**
31. Trim inner guards using a sharp knife or scissors or similar. **See figure 19 and 20.**
32. Fit centre bash plate to underside of protection bar, using six M6 x 20 bolts, flat washers and nyloc nuts (supplied). **See figure 21.**
33. Tighten all nuts and bolts.

**ENSURE NUMBER PLATE IS CLEARLY VISABLE**

**Note:** When fitting/refitting the licence plate to the vehicle, ensure there is no obstruction to licence plate vision in accordance with local authorities. If required, relocate licence plate to an alternate location.

**Further VFPS Notes:**

- a) Do not attach VFPS to the vehicle using anchorages not intended for this purpose (e.g. engine mounting bolts).
- b) Do not use this product for any vehicle make or model, other than those specified by the VFPS manufacturer.
- c) Do not remove the plaque or label from the VFPS.
- d) Do not modify the structure of the VFPS in any way.
- e) No accessory or fitment should project forward of the VFPS forward profile.
- f) **ENSURE THESE INSTRUCTIONS ARE LEFT WITH VEHICLE OWNER AND/OR OPERATOR.**

**IMPORTANT INFORMATION**

Periodically check bolts and nuts for correct tightness, especially if travelling on rough roads

**FITTING KIT**

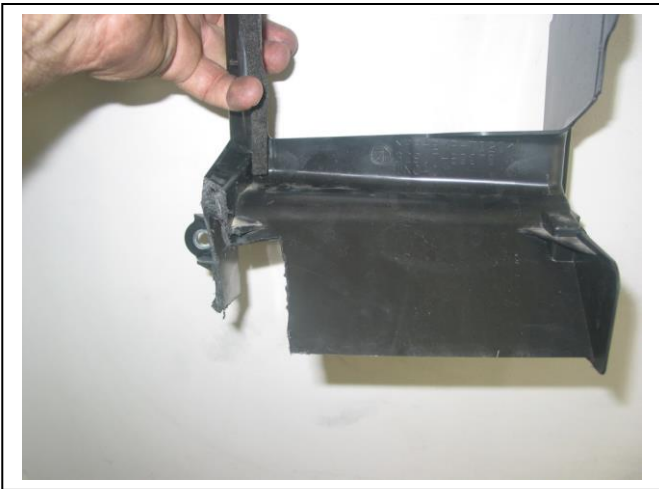
1 – ECB Winch frame	8 – M10 x 1.25 nuts
1 – ECB under body guard	15 – M6 x 20 bolts
1 – Pair ECB side under body guards	28 – M6 flat washers
1 – Warn control box bracket (WIN_CONT_B4MS) – <b>IN KIT</b>	13 – M6 nyloc nuts
1 – Mean Mother control box bracket (MOTHERCB_B4MS) – <b>IN KIT</b>	2 – M6 nuts and spring washers
2 – 117 to 140mm worm drive hose clamp	1 – ECB LED Indicator / Park light kit (ICLED104ECB)
4 – M12 x 1.25 x 55 bolts	1 - Quick Click Indi / Park kit (IC12200HIECB100H)
6 – M12 x 1.25 x 40 bolts	1 – ECB fog light kit (ICLED200DRL)
2 – M12 x 1.25 x 35 bolts	1 - Quick Click fog wiring kit (IC10D40S1004ECBH)
24 – M12 flat washers	4 – ECB fog light trims
12 – M12 spring washers	1 – 2100mm length, 6mm clip lock trim
12 – M12 x 1.25 nuts	1 – 750mm length, 6mm clip lock trim
8 – M10 flat washers	2 – 550mm lengths, 3mm clip lock trim
8 – M10 spring washers	10 – 300mm zip ties



**Figure 1:** Approximate cut line on vehicle. Centre measurement is 55mm



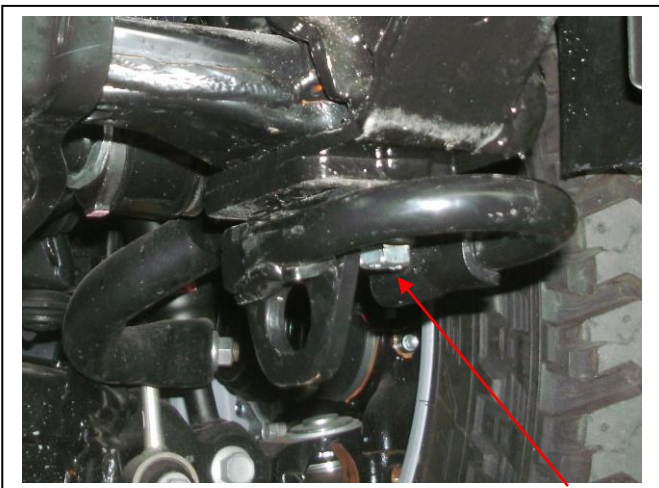
**Figure 2:** Approximate trim on passengers side shroud



**Figure 3:** Approximate trim on drivers side shroud



**Figure 4:** Three bolts to crash can assembly



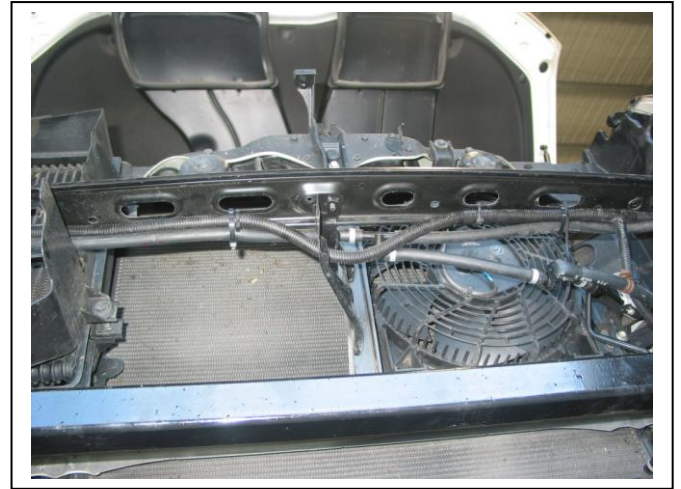
**Figure 5:** Bolts through tow hook assemblies



**Figure 6:** control box mount installed



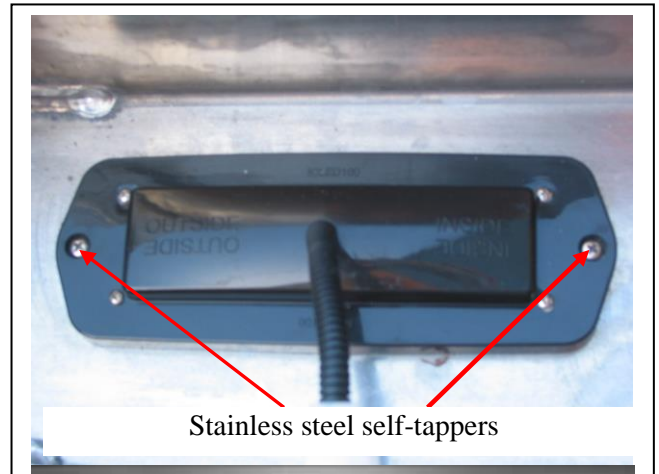
**Figure 7:** Warn Winch fitted for photo



**Figure 8:** Wiring and headlight washer loome attachment under grille support.

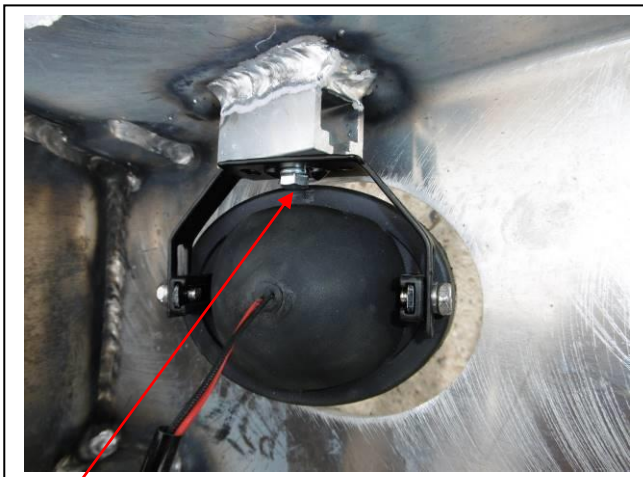


**Figure 9:** 3mm clip lock, trimmed to suit rear of cut



Stainless steel self-tappers

**Figure 10**

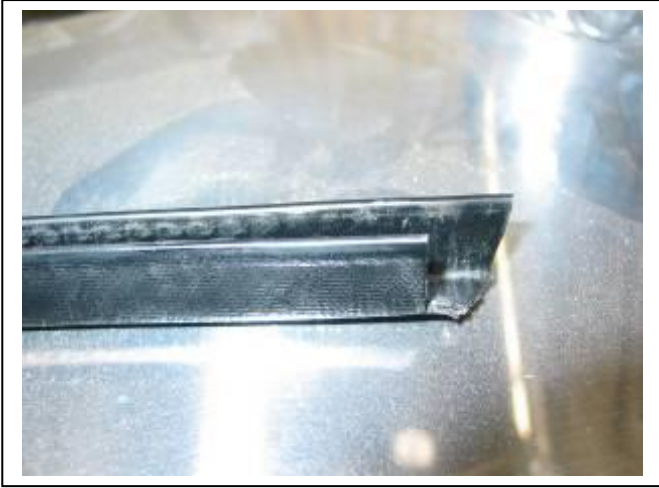


M6 bolt

**Figure 11**



**Figure 12:** 6mm clip lock trim top view



**Figure 13:** 6mm clip lock trim end trim



**Figure 14:** Protection bar side view



**Figure 15:** Protection bar front view



**Figure 16:** Cut down lower bumper clips for use on rear of inner guard



**Figure 17:** Passengers side under body guard.



**Figure 18:** Front inner guard support. Passenger's side only



**Figure 19**



**Figure 20**



**Figure 21**



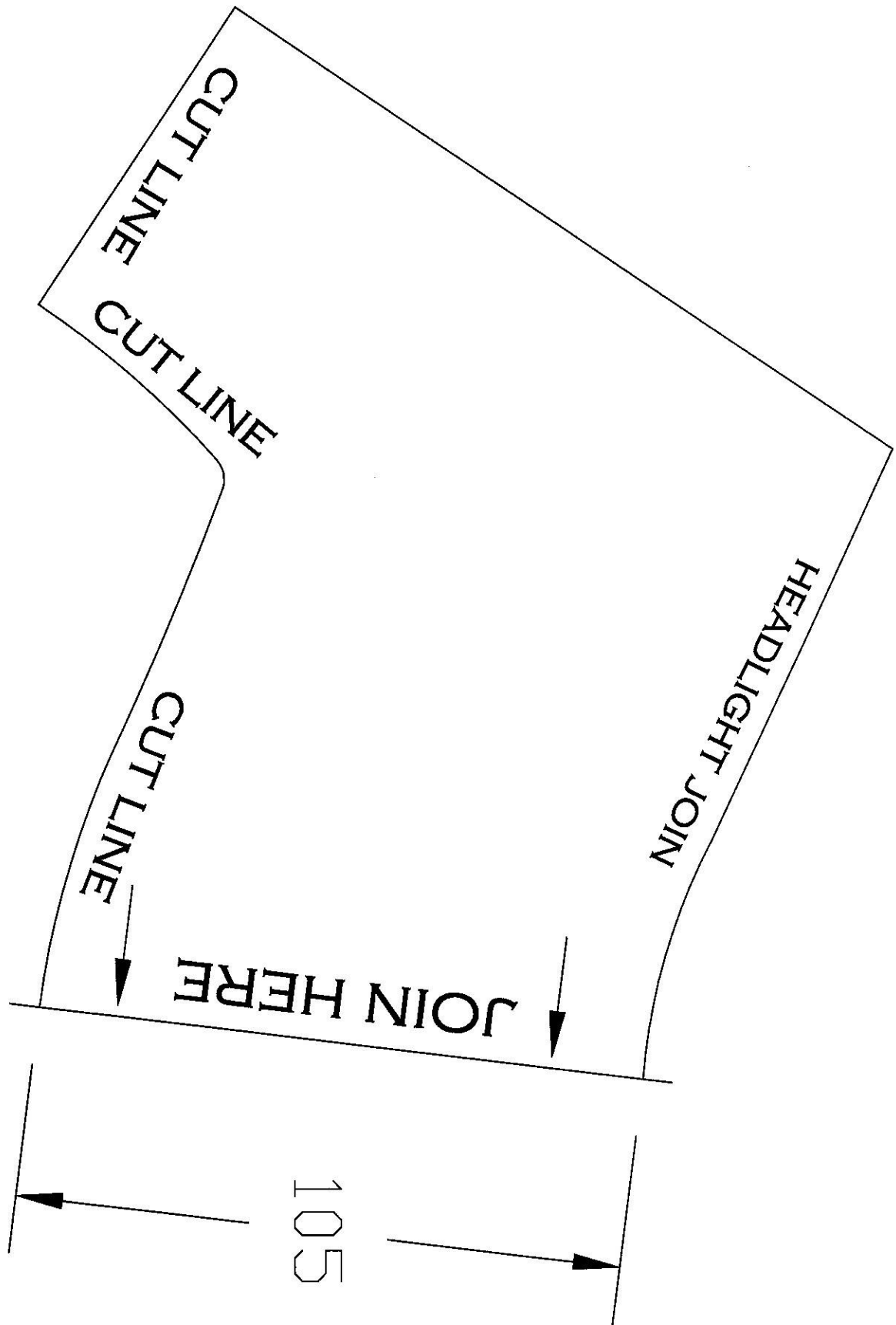
**Lighter  
Stronger  
Better!**

A: 29 Snook St Clontarf QLD 4019  
A: PO Box 122 Margate QLD 4019  
P: 07 3897 5700  
F: 07 3283 1168  
E: [info@ecb.com.au](mailto:info@ecb.com.au)  
W: [ecb.com.au](http://ecb.com.au)  
W: [customalloy.com.au](http://customalloy.com.au)





**Figure 1:** Templates  
Check measurement as some printers may vary.  
Continued next page

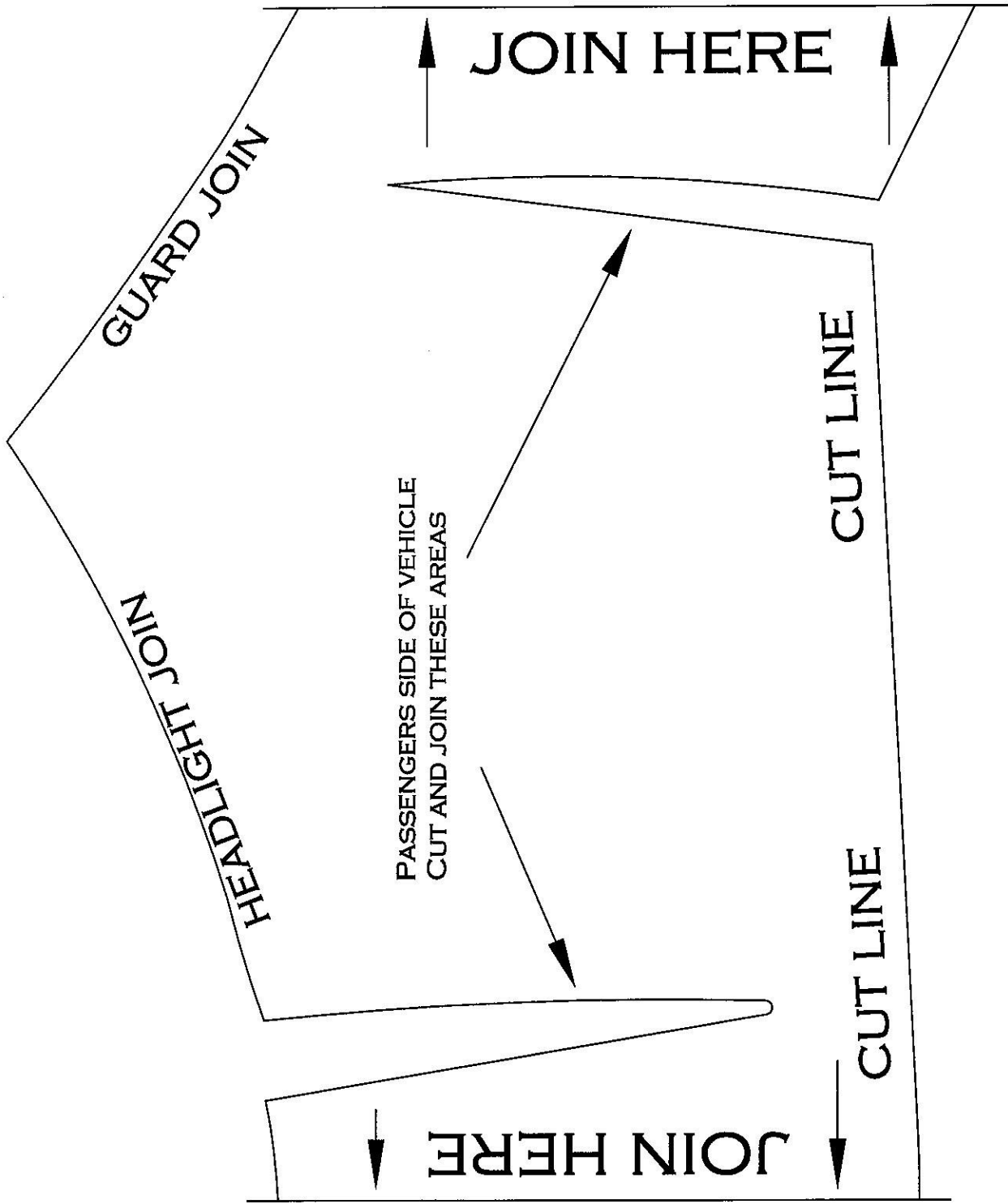




**Lighter  
Stronger  
Better!**

A: 29 Snook St Clontarf QLD 4019  
A: PO Box 122 Margate QLD 4019  
P: 07 3897 5700  
F: 07 3283 1168  
E: [info@ecb.com.au](mailto:info@ecb.com.au)  
W: [ecb.com.au](http://ecb.com.au)  
W: [customalloy.com.au](http://customalloy.com.au)



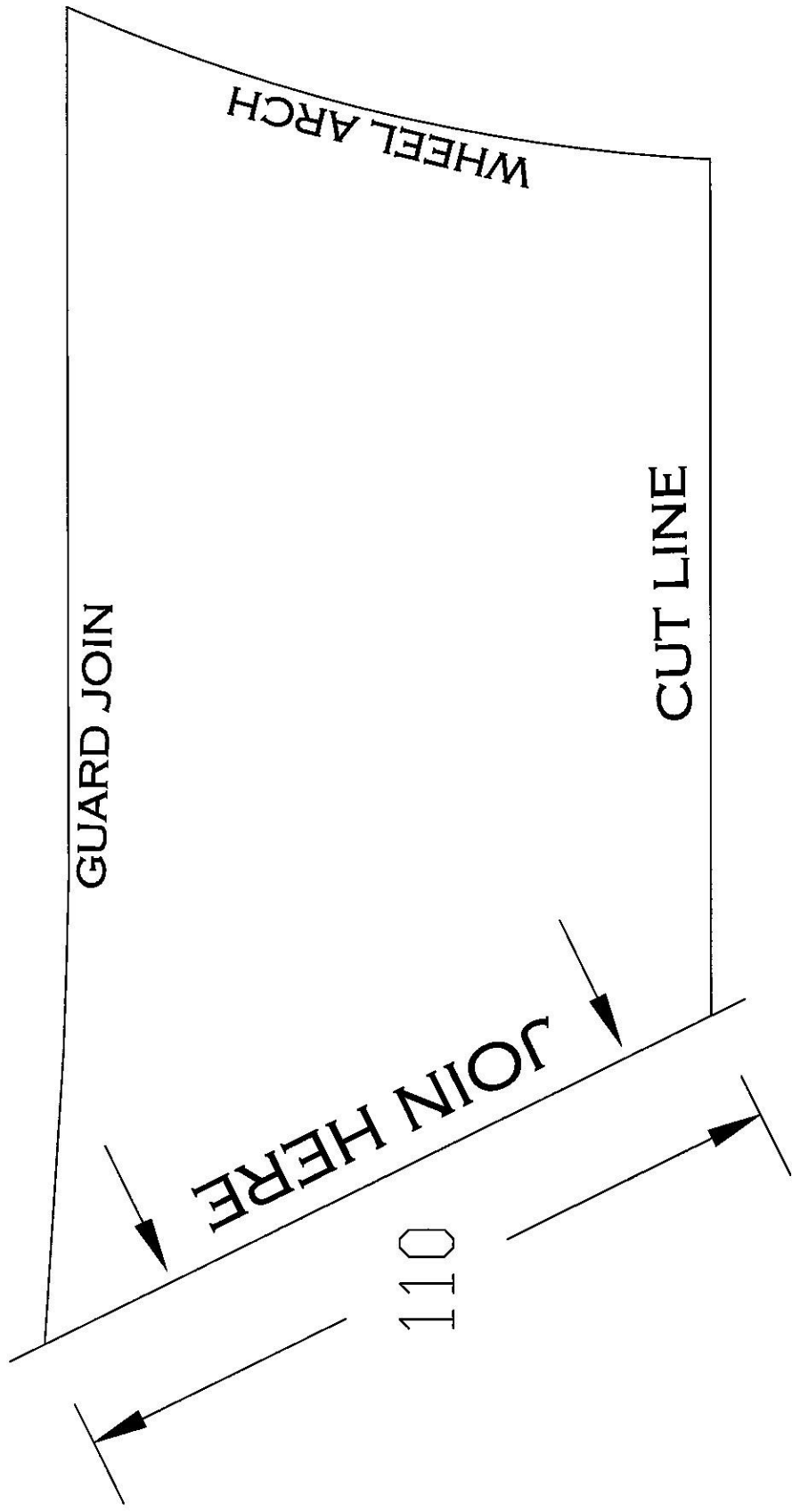




**Lighter  
Stronger  
Better!**

A: 29 Snook St Clontarf QLD 4019  
A: PO Box 122 Margate QLD 4019  
P: 07 3897 5700  
F: 07 3283 1168  
E: [info@ecb.com.au](mailto:info@ecb.com.au)  
W: [ecb.com.au](http://ecb.com.au)  
W: [customalloy.com.au](http://customalloy.com.au)







**Lighter  
Stronger  
Better!**

A: 29 Snook St Clontarf QLD 4019  
A: PO Box 122 Margate QLD 4019  
P: 07 3897 5700  
F: 07 3283 1168  
E: [info@ecb.com.au](mailto:info@ecb.com.au)  
W: [ecb.com.au](http://ecb.com.au)  
W: [customalloy.com.au](http://customalloy.com.au)





**Lighter  
Stronger  
Better!**

A: 29 Snook St Clontarf QLD 4019  
A: PO Box 122 Margate QLD 4019  
P: 07 3897 5700  
F: 07 3283 1168  
E: info@ecb.com.au  
W: ecb.com.au  
W: customalloy.com.au



**We value your comments**

Dear Fitter,

ECB would like to know how you went with the installation of this product. We value your comment and may need to contact you to clarify some details so please complete your contact details clearly.

We would appreciate if you could complete as many of the following details as possible.

<b>Your Name:</b>	<b>Your contact No.</b>
<b>Product Part No.</b>	<b>Product Invoice No.</b>
<b>Product Description:</b>	<b>Make, model, and year of vehicle:</b>
<b>Product Work Order No.</b>	<b>Company your from/Company product purchased from:</b>

**Date of Fitment:** \_\_\_\_/\_\_\_\_/\_\_\_\_

Was the fitting hardware supplied complete?      Yes      No  
     

If no what was not supplied  
\_\_\_\_\_  
\_\_\_\_\_

Did the installation go well?      Yes      No  
     

Please provide comments  
\_\_\_\_\_  
\_\_\_\_\_  
\_\_\_\_\_

Please draw diagrams if you need to.

**Post to**  
Reply Paid 122  
PO Box 122  
Margate QLD 4019

**Fax to**  
(07) 3283 1168



**Lighter  
Stronger  
Better!**

A: 29 Snook St Clontarf QLD 4019  
A: PO Box 122 Margate QLD 4019  
P: 07 3897 5700  
F: 07 3283 1168  
E: [info@ecb.com.au](mailto:info@ecb.com.au)  
W: [ecb.com.au](http://ecb.com.au)  
W: [customalloy.com.au](http://customalloy.com.au)







**Lighter  
Stronger  
Better!**

A: 29 Snook St Clontarf QLD 4019  
A: PO Box 122 Margate QLD 4019  
P: 07 3897 5700  
F: 07 3283 1168  
E: info@ecb.com.au  
W: ecb.com.au  
W: customalloy.com.au



## DESPATCH CHECKLIST EAT112SY

Work Order #	
Finish:	
Transport:	
Due Date:	

- OC.....1 – ECB Steel winch frame
- OC.....1 – ECB under body guard. **P/C black**
- OC.....1 – Pair ECB side under body guards. **P/C black**
- OC.....1 – Bolt kit.
- OC.....2 – ECB overrides
- OC.....3 – 6mm air scoops
- WR.....1 – ECB Steel winch frame – **Fitted to Bar**
- WR.....1 – ECB under body guard– **Wrapped and placed in bullbar carton**
- WR.....1 – Pair ECB side under body guards. – **Wrapped and placed in bullbar carton**
- WR.....1 – Bolt kit – **Taped to wing of bar**
- WR.....2 – ECB overrides – **Fitted to Bar**
- WR.....3 – 6mm air scoops – **Fitted to Bar**



Is this product “the best it can be” Yes \_\_\_\_\_/\_\_\_\_\_  
Wrapper’s initials / Checker initials

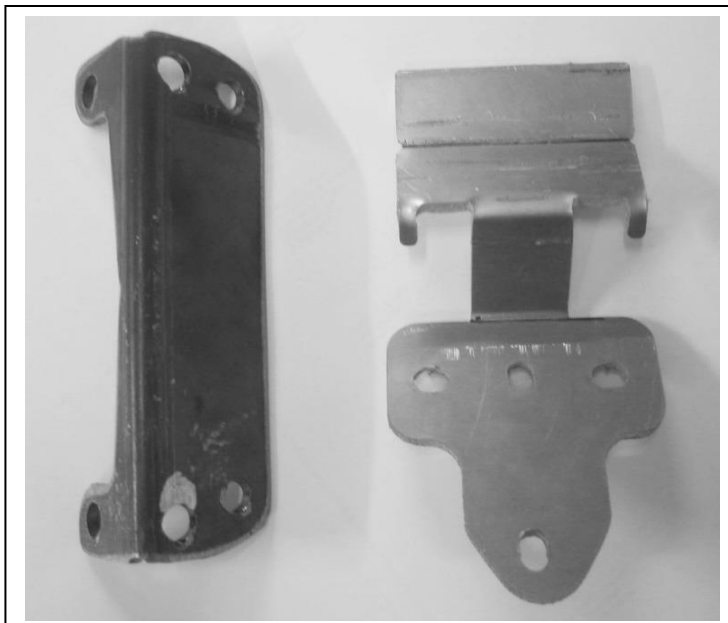
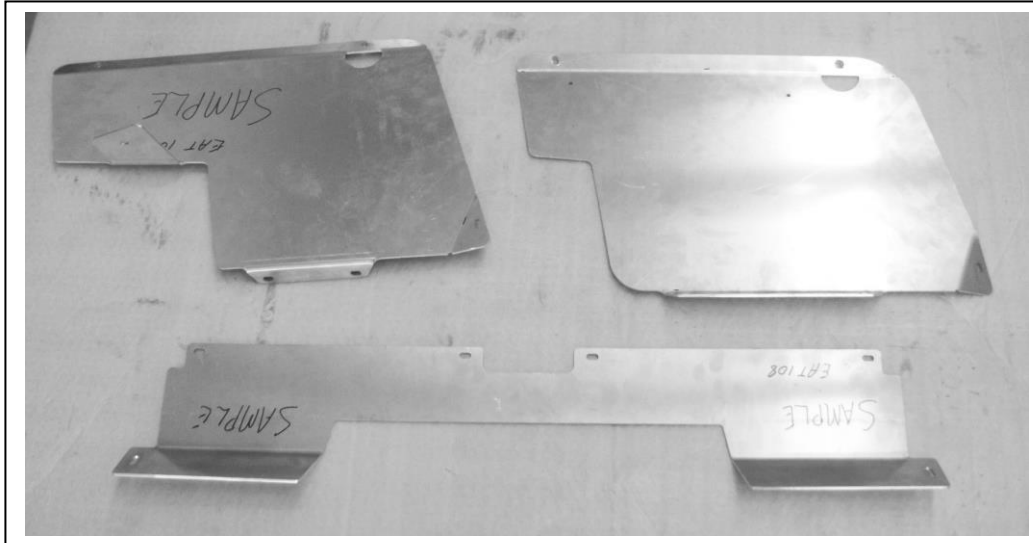
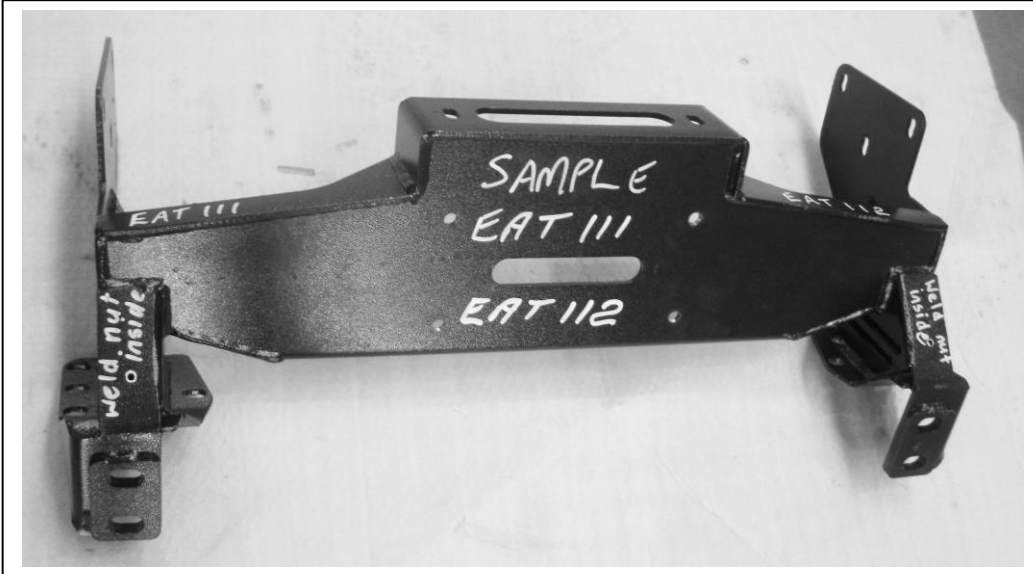
If **NO** fix before continuing

All parts checked and completed by:

Nut and bolts: \_\_\_\_\_ Date \_\_/\_\_/\_\_

Order control: \_\_\_\_\_ Date \_\_/\_\_/\_\_

Final wrap check: \_\_\_\_\_ Date \_\_/\_\_/\_\_



1 – Warn control box mount  
(WIN\_CONT\_B4MS) – **IN KIT**

1 – Mean Mother winch control bracket  
(MOTHERCB\_B4MS) – **IN KIT**

**BOTH OF THESE SHOULD BE IN  
FITTING KIT**