



**WORLD'S BEST
ALLOY BULLBARS**

East Coast Bullbars (ECB Pty Ltd)

Tel: 07 3897 5700

Fax: 07 3283 1168

ecb@ecb.com.au www.ecb.com.au

29 Snook St
Clontarf QLD 4019
Australia

Po Box 122
Margate QLD 4019
Australia

EAT110SY

REPLACES: 00.00.00

REVISED: 16.01.18

FITTING INSTRUCTIONS

TOYOTA LANDCRUISER 200 SERIES 6-12 ON Altitude model ECB ARC™ PROTECTION BAR with FOG LIGHTS VEHICLE FRONTAL PROTECTION SYSTEM (VFPS) FOR AIR BAG & ADR COMPLIANT VEHICLES

Check installation hardware before commencing.

Special tools: T30 Torx bit with suitable driver.

1. Check size of templates as size may vary according to printer. Using a sharp pair of scissors, accurately cut templates (supplied) from fitting instructions. Mask vehicle from bumper attachment point around bumper so bumper skin is not marked. Hold templates onto vehicle and mark cut line onto bumper skin. Across centre of bumper, measure 55mm above bumper grille and mark line between templates. **See figure 1**
2. Lift bonnet
3. Remove grille and headlamp cover, seven plastic push pull clips.
4. Remove three bolts from top of grille. Directly under outer bolts are two grille clips. Slide finger into hole in front of clip and push retainer to side to release clip. Remove grille as part of bumper.
5. Remove plastic splash guards from around tow points; four 10mm head bolts and one plastic 12mm head nut (per side).
6. Remove bumper and grille assembly. Six 10mm head bolts from underside centre of bumper, three T30 Torx head screws from front of wheel arch (per side), and three push pull clips from behind grille. Pull bumper sides outward to release plastic clips from guard edges and plastic bolt clips on inner guard. Disconnect vehicle fog lights (if fitted). **NOTE:** To remove from bumper under headlamp, a small flat blade screwdriver may need to be pushed between plastic bumper and steel retaining clip from underneath guard.
7. Remove polypropylene infill and aluminium bumper support, three 17mm nuts per side accessed from holes in front of support. Remove four 14mm head bolts (per side) from crash cans. Remove crash cans.
8. Remove tow hooks. Two 17mm bolts (per side).
9. Trim plastic radiator surrounds to allow fitment of ECB steel mounting bracket. **See figures 2 and 3.**
10. Slide ECB steel mounting bracket (supplied) onto front of chassis rails. Attach using eight M10 nuts, spring washers and flat washers (supplied). **Finger tighten only. See figure 4.**
11. Using two M12 x 55 bolts, spring washers and flat washers per side (supplied), refit original tow hooks, through ECB steel mounting bracket to vehicle. **Tighten all bolts. See figure 5.**
12. Disconnect indicator and parking lights on vehicle. Install ECB quick click wiring harnesses (supplied) between disconnected harness and indicator / park lights on vehicle. Run wiring out from under lights ensuring clearance from sharp edges and moving parts.



**WORLD'S BEST
ALLOY BULLBARS**

East Coast Bullbars (ECB Pty Ltd)

Tel: 07 3897 5700

Fax: 07 3283 1168

ecb@ecb.com.au www.ecb.com.au

29 Snook St
Clontarf QLD 4019
Australia

Po Box 122
Margate QLD 4019
Australia

13. Remove wiring loom, from rear of plastic bumper. Mount wiring to underside of grille mounting panel using five zip ties (supplied). Splice ECB fog light wiring into original wiring loome. **See figure 6.**
14. Using a jigsaw or similar, cut bumper along marked lines. Attach 3mm clip lock trim to cut line of bumper. Trim clip lock ends to suit end of plastic bumper. **See figure 7. WARNING: Cut lines around sides of vehicle do not follow bumper lines.**
15. Refit bumper cover and grille to vehicle. Connect headlight washers (if fitted)
16. Fit ECB LED indicator / park lights (supplied) into protection bar as per instructions supplied with the LED indicator kit. **NOTE: Ensure park light is to outside. See figure 8.**
17. Attach ECB fog lights to protection bar. Place M6 x 20 bolts, spring washers (supplied) through light mount from inside and attach nut to top. Slide assembly into light mount in Protection bar and centralize light to hole. **TIGHTEN FIRM ONLY. See figure 9.**
18. Attach 6mm clip lock trim (supplied) to top centre of ECB protection bar. **See figures 10 & 11.**
19. Attach protection bar to outside of steel mounting brackets using three M12 x 40 bolts (supplied), washers, spring washers and nuts (per side).
20. Align protection bar with approximately 12mm clearance off bumper. **See figures 12 and 13. Tighten all bolts.**
21. Connect ECB indicator/park light, fog light wiring. Ensure wiring is routed in such a manner to avoid any sharp edges etc. Insert black plastic plugs into parking sensor holes.
22. Check all lights for correct operation.
23. Remove original plastic clips from join of lower bumper and inner guard. Trim plastic clips **See figure 14** and fit to rear edge of side under body guards. (Two per side).
24. Using M6 x 20 bolts, flat washers and nyloc nuts (supplied), attach 3mm alloy under body guard to top of end skirt and underside of lower leg of channel. **Tighten all bolts. See figure 15.**
25. Pushing inner guard into position in wheel arch, drill two holes per side in inner guard aligning with plastic clips on under body guard. Attach inner guards to rear of under body guards using 10mm head original equipment screws.
26. On passengers side only: using under body guard as a guide and pushing inner guard up into wheel arch opening, drill hole through inner guard. Bolt inner guard to under body guard using one M6 x 20 bolt, flat washers and nyloc nut. **NOTE: Bolt must be placed in hole from rear of vehicle. Nut must be to front to stop rubbing on suspension parts. See figure 16.**
27. Trim inner guards using a sharp knife or scissors or similar. **See figure 17 and 18.**
28. Fit centre bash plate to underside of protection bar, using six M6 x 20 bolts, flat washers and nyloc nuts (supplied). **See figure 19.**
29. Tighten all nuts and bolts.



**WORLD'S BEST
ALLOY BULLBARS**

East Coast Bullbars (ECB Pty Ltd)

Tel: 07 3897 5700

Fax: 07 3283 1168

ecb@ecb.com.au www.ecb.com.au

29 Snook St
Clontarf QLD 4019
Australia

Po Box 122
Margate QLD 4019
Australia

ENSURE NUMBER PLATE IS CLEARLY VISABLE

Note: When fitting/refitting the licence plate to the vehicle, ensure there is no obstruction to licence plate vision in accordance with local authorities. If required, relocate licence plate to an alternate location.

Further VFPS Notes:

- Do not attach VFPS to the vehicle using anchorages not intended for this purpose (e.g. engine mounting bolts).
- Do not use this product for any vehicle make or model, other than those specified by the VFPS manufacturer.
- Do not remove the plaque or label from the VFPS.
- Do not modify the structure of the VFPS in any way.
- No accessory or fitment should project forward of the VFPS forward profile.
- ENSURE THESE INSTRUCTIONS ARE LEFT WITH VEHICLE OWNER AND/OR OPERATOR.**

IMPORTANT INFORMATION

Periodically check bolts and nuts for correct tightness, especially if travelling on rough roads

FITTING KIT

1 – ECB Steel mounting bracket	28 – M6 flat washers
1 – ECB under body guard	13 – M6 nyloc nuts
1 – Pair ECB side under body guards	2 – M6 nuts and spring washers
4 – M12 x 1.25 x 55 bolts	1 – ECB LED Indicator / Park light kit (ICLED100H)
6 – M12 x 1.25 x 40 bolts	1 - Quick Click Indi / Park kit (IC07200ECB100H)
16 – M12 flat washers	1 – ECB fog light kit (35 watt) (IC10035ECB)
10 – M12 spring washers	1 - Quick Click fog wiring kit (IC10D40S1004ECBH)
6 – M12 x 1.25 nuts	2 – ECB fog light trims
8 – M10 flat washers	2 – 27mm black plastic plugs
8 – M10 spring washers	1 – 2100mm length, 6mm clip lock trim
8 – M10 x 1.25 nuts	2 – 550mm length, 3mm clip lock trim
15 – M6 x 20 bolts	10 – 300mm zip ties



Figure 1: Approximate cut line on vehicle. Centre measurement is 55mm



Figure 2: Approximate trim on passengers side shroud



East Coast Bullbars (ECB Pty Ltd)

Tel: 07 3897 5700

Fax: 07 3283 1168

ecb@ecb.com.au www.ecb.com.au

29 Snook St
Clontarf QLD 4019
Australia

Po Box 122
Margate QLD 4019
Australia

WORLD'S BEST
ALLOY BULLBARS

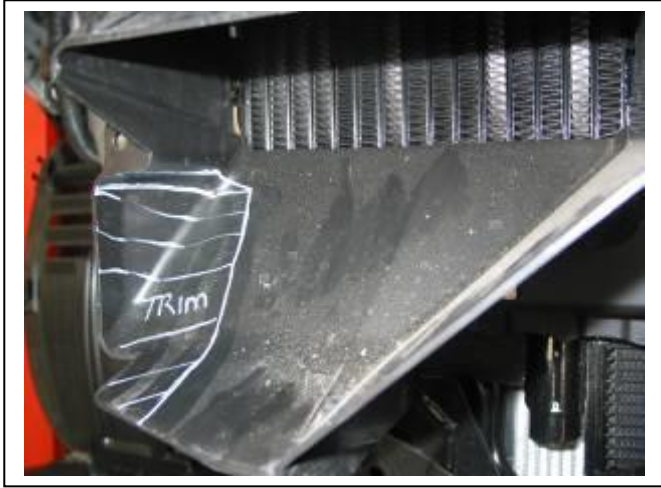


Figure 3: Approximate trim on drivers side shroud

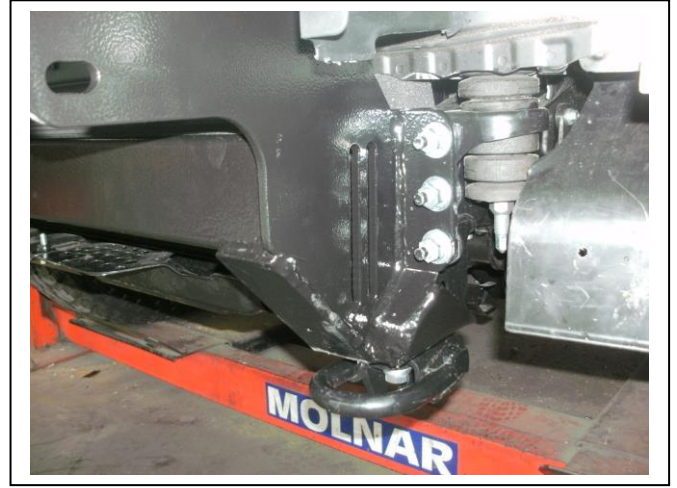


Figure 4: Three bolts to crash can assembly

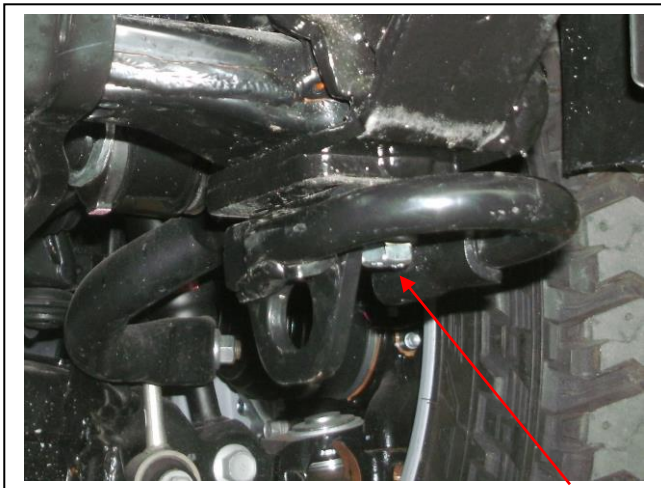


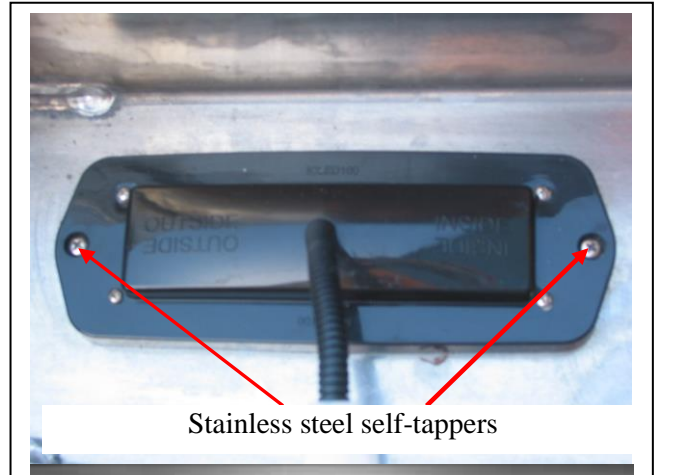
Figure 5: Bolts through tow hook assemblies



Figure 6: Wiring and headlight washer loome attachment under grille support.



Figure 7: 3mm clip lock, trimmed to suit rear of cut



Stainless steel self-tappers

Figure 8



East Coast Bullbars (ECB Pty Ltd)

Tel: 07 3897 5700

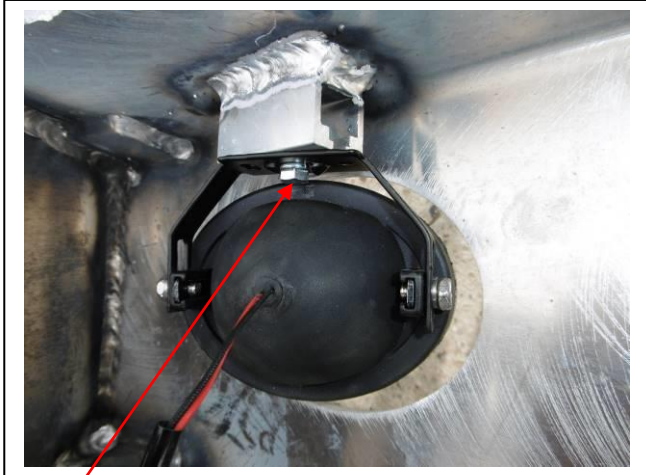
Fax: 07 3283 1168

ecb@ecb.com.au www.ecb.com.au

29 Snook St
Clontarf QLD 4019
Australia

Po Box 122
Margate QLD 4019
Australia

WORLD'S BEST
ALLOY BULLBARS



M6 bolt

Figure 9



Figure 10: 6mm clip lock trim top view

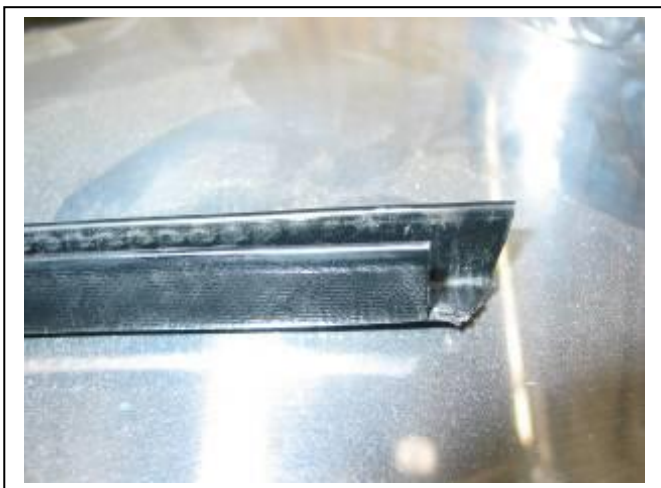


Figure 11: 6mm clip lock trim end trim



Figure 12: Protection bar side view



Figure 13: Protection bar front view





East Coast Bullbars (ECB Pty Ltd)

Tel: 07 3897 5700

Fax: 07 3283 1168

ecb@ecb.com.au www.ecb.com.au

29 Snook St
Clontarf QLD 4019
Australia

Po Box 122
Margate QLD 4019
Australia

WORLD'S BEST
ALLOY BULLBARS

Figure 14: Cut down lower bumper clips for use on rear of inner guard



Figure 16: Front inner guard support. Passenger's side only



Figure 18: Inner guard, Passenger's side shown



Figure 15: Passengers side under body guard.

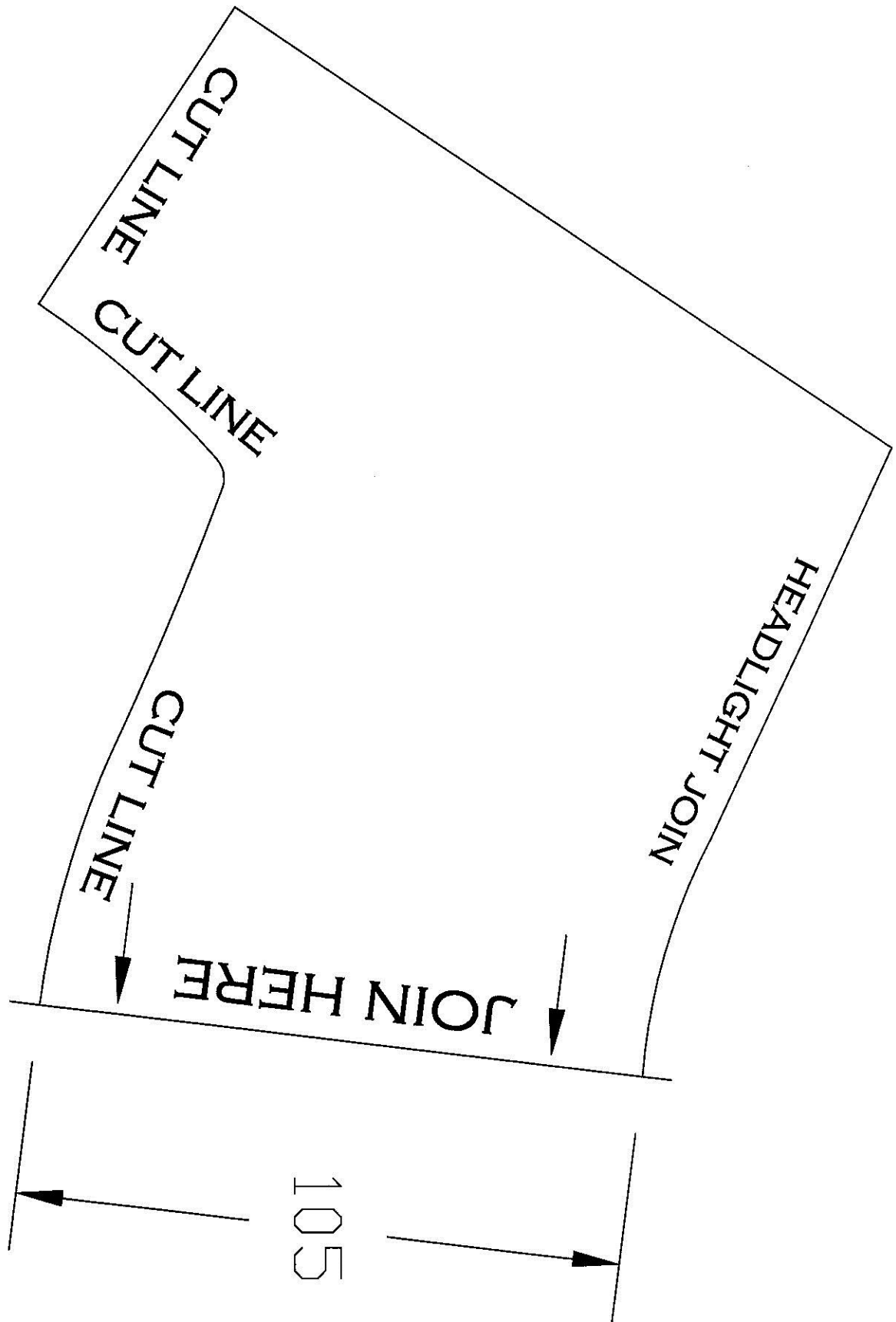


Figure 17: inner guard trim, driver's side shown



Figure 19: Centre under body guard fitted.

Figure 1: Templates
Check measurement as some printers may vary.
Continued next page





**WORLD'S BEST
ALLOY BULLBARS**

East Coast Bullbars (ECB Pty Ltd)

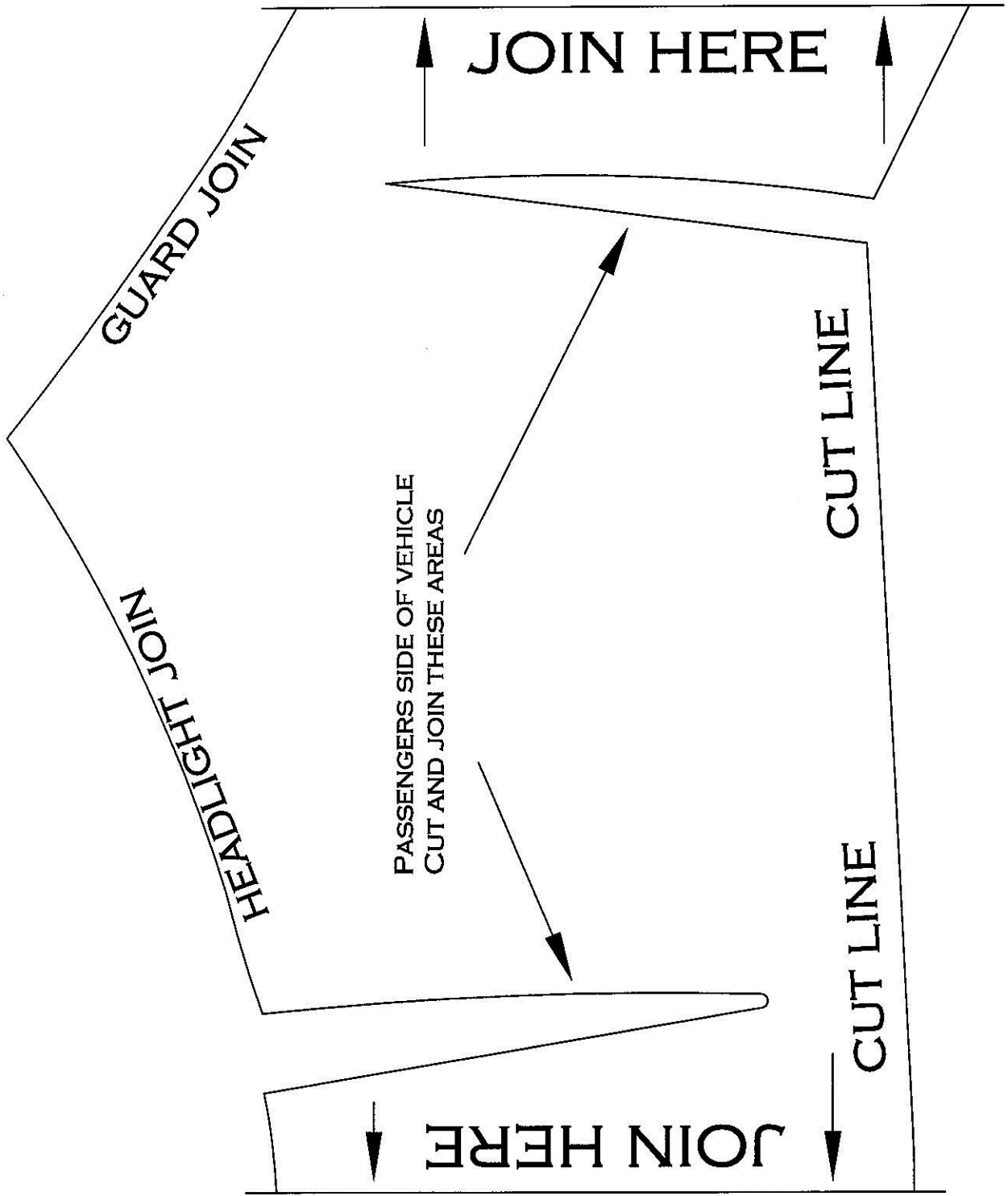
Tel: 07 3897 5700

Fax: 07 3283 1168

ecb@ecb.com.au www.ecb.com.au

29 Snook St
Clontarf QLD 4019
Australia

Po Box 122
Margate QLD 4019
Australia





**WORLD'S BEST
ALLOY BULLBARS**

East Coast Bullbars (ECB Pty Ltd)

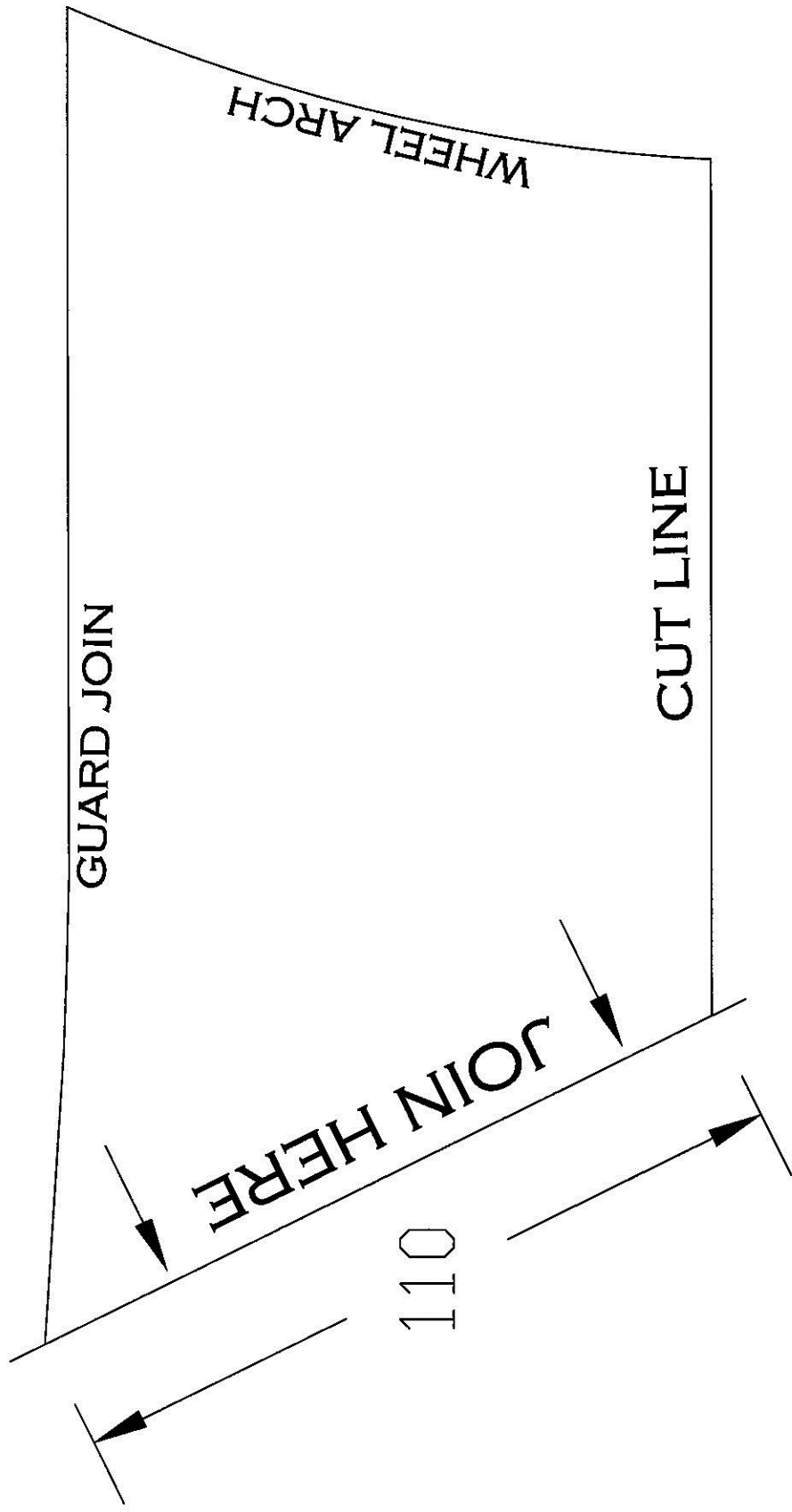
Tel: 07 3897 5700

Fax: 07 3283 1168

ecb@ecb.com.au www.ecb.com.au

29 Snook St
Clontarf QLD 4019
Australia

Po Box 122
Margate QLD 4019
Australia





**WORLD'S BEST
ALLOY BULLBARS**

East Coast Bullbars (ECB Pty Ltd)

Tel: 07 3897 5700

Fax: 07 3283 1168

ecb@ecb.com.au www.ecb.com.au

29 Snook St
Clontarf QLD 4019
Australia

Po Box 122
Margate QLD 4019
Australia



**WORLD'S BEST
ALLOY BULLBARS**

East Coast Bullbars (ECB Pty Ltd)

Tel: 07 3897 5700

Fax: 07 3283 1168

ecb@ecb.com.au www.ecb.com.au

29 Snook St
Clontarf QLD 4019
Australia

Po Box 122
Margate QLD 4019
Australia

We value your comments

Dear Fitter,

ECB would like to know how you went with the installation of this product. We value your comment and may need to contact you to clarify some details so please complete your contact details clearly.

We would appreciate if you could complete as many of the following details as possible.

Your Name:	Your contact No.
Product Part No.	Product Invoice No.
Product Description:	Make, model, and year of vehicle:
Product Work Order No.	Company your from/Company product purchased from:

Date of Fitment: ____/____/____

Was the fitting hardware supplied complete?

Yes

No

If no what was not supplied

Did the installation go well?

Yes

No

Please provide comments

Please draw diagrams if you need to.

Post to
Reply Paid 122
PO Box 122
Margate QLD 4019

Fax to
(07) 3283 1168



**WORLD'S BEST
ALLOY BULLBARS**

East Coast Bullbars (ECB Pty Ltd)

Tel: 07 3897 5700

Fax: 07 3283 1168

ecb@ecb.com.au www.ecb.com.au

29 Snook St
Clontarf QLD 4019
Australia

Po Box 122
Margate QLD 4019
Australia



WORLD'S BEST
ALLOY BULLBARS

East Coast Bullbars (ECB Pty Ltd)

Tel: 07 3897 5700

Fax: 07 3283 1168

ecb@ecb.com.au www.ecb.com.au

29 Snook St
Clontarf QLD 4019
Australia

Po Box 122
Margate QLD 4019
Australia

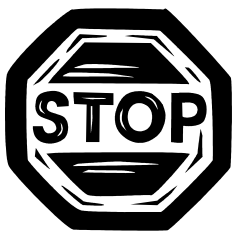
DESPATCH CHECKLIST EAT110SY

ICZBKCT110



Work Order #	
Finish:	
Transport:	
Due Date:	

- 1 – ECB Steel mounting bracket.
- 1 – ECB under body guard. **P/C black**
- 1 – Pair ECB side under body guards. **P/C black**
- 1 – Bolt kit.
- 1 – ECB LED Indicator / Park light kit. (ICLED101)
- 1 - Quick Click Indi / Park kit (IC07200ECB100H)
- 1 – ECB fog light kit (IC10035ECB)
- 1 - Quick Click fog wiring kit (IC10D40S1004ECBH)
- 2 – ECB fog light trims (in fitting kit)
- 1 – 2100mm length 6mm clip lock trim long.
- 2 – 550mm length 3mm clip lock trim long.
- 2 – ECB overrides – **Fitted to Bar**
- 7 – 6mm air scoops – **Fitted to Bar**



Is this product “the best it can be” Yes _____/_____

Wrapper’s initials / Checker initials

If **NO** fix before continuing

All parts checked and completed by:

Nut and bolts: _____ Date __/__/__

Order control: _____ Date __/__/__

Final wrap check: _____ Date __/__/__



East Coast Bullbars (ECB Pty Ltd)

Tel: 07 3897 5700

Fax: 07 3283 1168

ecb@ecb.com.au www.ecb.com.au

29 Snook St
Clontarf QLD 4019
Australia

Po Box 122
Margate QLD 4019
Australia

WORLD'S BEST
ALLOY BULLBARS

