



WORLD'S BEST
ALLOY BULLBARS

East Coast Bullbars (ECB Pty Ltd)

Tel: 07 3897 5700

Fax: 07 3283 1168

ecb@ecb.com.au www.ecb.com.au

29 Snook St
Clontarf QLD 4019
Australia

Po Box 122
Margate QLD 4019
Australia

EAN63SY

REPLACES: 09.02.10
REVISED: 29.06.10

FITTING INSTRUCTIONS

NISSAN PATHFINDER R51 07/05on ST-L & Ti MODELS & NAVARA D40 12/05- WINCH COMPATIBLE (UP TO XP 9.5) ARC™ PROTECTION BAR VEHICLE FRONTAL PROTECTION SYSTEM (VFPS) FOR AIR BAG & ADR COMPLIANT VEHICLES

Check installation hardware before commencing.

1. Carefully cut around templates (supplied) for bumper trim using scissors. **See figure 1** for placement. **CAUTION:** Measure template to ensure correct size, some printers may vary.
2. To avoid damage to vehicle when cutting, use masking tape to cover area where template is placed on vehicle. Place template onto vehicle and mark cut line. **Caution:** Ensure markings on template match area on bumper.
3. Remove lower plastic trim from bumper cover. Six 10mm head bolts.
4. Remove inner guard from edge of plastic bumper skin. Two PK screws (two 10mm head bolts on extra cab) from under side of bumper and one pk screw on front edge of wheel arch.
5. Using a jigsaw or similar, cut area previously marked using template. Cut centre of bar on crease line of bumper using a strong sharp knife. **See figure 2 and 3**
6. Remove lower half of plastic bumper cover. Four 10mm head bolts on underside of bumper. **Extra cab only:** Three plastic screw clips in bumper grille area.
7. Disassemble engine shield, two 10mm head bolts on front of Engine shield; loosen rear 10mm head bolts and allow too hang down.
8. Remove bumper support, two 17mm head bolts (per side).
9. Remove tow hook from passenger's side of vehicle, two 17mm head bolts.
10. Grind lip off lower chassis, so steel mounting brackets will sit flat. **See figures 4 and 5.** Blow all fillings clear and treat all exposed metal with paint or a rust inhibitor.
11. Install ECB steel mounting brackets onto vehicle. Four M12 x 40mm bolts, spring washers, flat washers and two 6mm square washers (supplied) (per side). **See figure 6** for placement of Square washers. For bolts two under vehicle and two on front of chassis rails. **Note:** For extra cab: two ½ x 1 ½ bolts on 300mm wire (supplied) will need to be inserted into driver's side chassis rail. Fold wire into chassis rail to force bolt into hole for ease of fitment. Two nuts, flat washers and spring washers (supplied) will be used for fitment in this case. **Finger tighten only. See figure 7.**
12. Fit winch fairlead rollers to front of ECB winch frame using two 3/8 x 1 bolts, flat washers, spring washers and nuts (supplied), with head of bolt to inside (winch side) of winch frame. **See figure 8. Finger tighten only.**



**WORLD'S BEST
ALLOY BULLBARS**

East Coast Bullbars (ECB Pty Ltd)

Tel: 07 3897 5700

Fax: 07 3283 1168

ecb@ecb.com.au www.ecb.com.au

29 Snook St
Clontarf QLD 4019
Australia

Po Box 122
Margate QLD 4019
Australia

13. Fit ECB control box mount to drivers side of ECB winch mount using two 3/8 x 1 bolts, flat washers, spring washers and nuts. **Important:** Place head of bolt to rear (winch side) of ECB winch mount.
14. Using a jack or suitable lifting equipment, install ECB winch frame onto ECB steel mounting brackets with eight 1/2 x 1 1/2 bolts, flat washers, spring washers, 6mm square steel washers and nuts (supplied). **See figure 9** for placement of 6mm square steel washers. Place bolt heads to winch side of mount for ease of fitment. **Note:** Winch frame sits to rear holes in mount for extra cab vehicle and front holes for all other vehicles.
15. Align ECB winch frame to sit level to vehicle. **Loosely tighten bolts.**
16. Align mounts to centre of vehicle.
17. **Tighten all bolts.**
18. Refit engine cover to underside of winch frame using M6 x 35mm bolts, flat washers and nyloc nuts (supplied). Trim sides of engine cover to fit between ECB Steel mounting systems. **See figure 10 . Tighten all bolts.**
19. Fit winch to ECB winch frame as per manufacturer's instructions. **Note:** Four extra 3/8 flat washers have been included in ECB fitting kit for use on bolts for winch fitment to ECB winch frame where not supplied by winch manufacturer.
20. Install winch wiring as per manufacturer's instructions. Ensure wiring is fitted in such a way to be protected from heat and sharp objects. Mount control box for checking of wiring only, do not tighten in position. **See figure 11.**
21. Splice ECB indicator / park light wiring into original wiring loome.
22. Fit ECB LED indicator / park lights (supplied) into protection bar as per instructions supplied with the LED indicator kit. **NOTE: Ensure park light is to outside. See figure 12.**
23. Attach 6mm clip lock trim (supplied) to top of ECB protection bar. **NOTE:** Trim off lower edge on an angle so trim will sit flush with end of protection bar. **See figures 13, 14 and 15.**
24. Attach 3mm clip lock (supplied) to underside of bumper trim on sides of vehicle. **NOTE:** Trim edge on an angle so trim will sit flush with both ends of plastic bumper cut area. **See figure 16.**
25. Remove control box from mount and push to centre of vehicle.
26. Fit ECB protection bar to outside of steel mounting brackets. Use 1/2 x 1 1/2 bolts, flat washers, spring washers and nuts (supplied). **Finger tighten only. Note:** Rear slots in mount for Extra cab, front slots for all other models.
27. Align ECB protection bar with vehicle allowing minimum 12mm between bar wings and bumper cut for body twist. **Tighten all bolts. See figures 17 and 18.**
28. Refit winch control box to ECB control box mount. **Tighten in position.** Ensure wiring is fitted in such a way to be protected from heat and sharp objects. Fit Fog light trims to inspection holes in top of ECB Protection Bar with long side of trim to front of hole. **See figure 19.**
29. Align fairlead rollers approximately 10mm from underside of ECB protection bar. **Tighten in position.**



**WORLD'S BEST
ALLOY BULLBARS**

East Coast Bullbars (ECB Pty Ltd)

Tel: 07 3897 5700

Fax: 07 3283 1168

ecb@ecb.com.au www.ecb.com.au

29 Snook St
Clontarf QLD 4019
Australia

Po Box 122
Margate QLD 4019
Australia

30. Trim inner guards to suit shape and height of bumper.
31. Connect indicator /park lights. Check for correct operation.
32. Connect winch and test for correct operation.

ENSURE NUMBER PLATE IS CLEARLY VISABLE

Note: When fitting/refitting the licence plate to the vehicle, ensure there is no obstruction to licence plate vision in accordance with local authorities. If required relocate licence plate to an alternate location.

Further VFPS Notes:

- a) Do not attach VFPS to the vehicle using anchorages not intended for this purpose (e.g. engine mounting bolts).
- b) Do not use this product for any vehicle make or model, other than those specified by the VFPS manufacturer.
- c) Do not remove the plaque or label from the VFPS.
- d) Do not modify the structure of the VFPS in any way.
- e) No accessory or fitment should project forward of the VFPS forward profile.
- f) **ENSURE THESE INSTRUCTIONS ARE LEFT WITH VEHICLE OWNER AND/OR OPERATOR.**

IMPORTANT INFORMATION

Periodically check bolts and nuts for correct tightness, especially if travelling on rough roads

FITTING KIT

1 – Pair ECB Steel mounting brackets	4 – 3/8 x 1 ¼ bolts
1 – ECB winch mount	12 – 3/8 flat washers
1 – ECB winch control box mount	4 – 3/8 spring washers
8 – 40 x 40 steel washer 13mm hole	4 – 3/8 nuts
2 – 30 x 30 steel washer 13mm hole	2 – M6 x 35 bolts
2 – ½ x 1 ½ bolts and washers on 300mm wire	4 – M6 flat washers
12 – ½ x 1 ½ bolts	2 – M6 nyloc nuts
26 – ½ flat washers	1 – ECB LED Indicator / Park light kit
14 – ½ spring washers	6 – Cable locks
14 – ½ nuts	1 – 2400mm length 6mm clip lock trim
8 – M12 x 1.25 x 40 bolts	2 – 500mm length 3mm clip lock trim
8 – M12 flat washers	2 – Fog light trims
8 – M12 spring washers	



**WORLD'S BEST
ALLOY BULLBARS**

East Coast Bullbars (ECB Pty Ltd)

Tel: 07 3897 5700

Fax: 07 3283 1168

ecb@ecb.com.au www.ecb.com.au

29 Snook St
Clontarf QLD 4019
Australia

Po Box 122
Margate QLD 4019
Australia

CAUTION: Measure template to ensure correct size, some printers may vary.

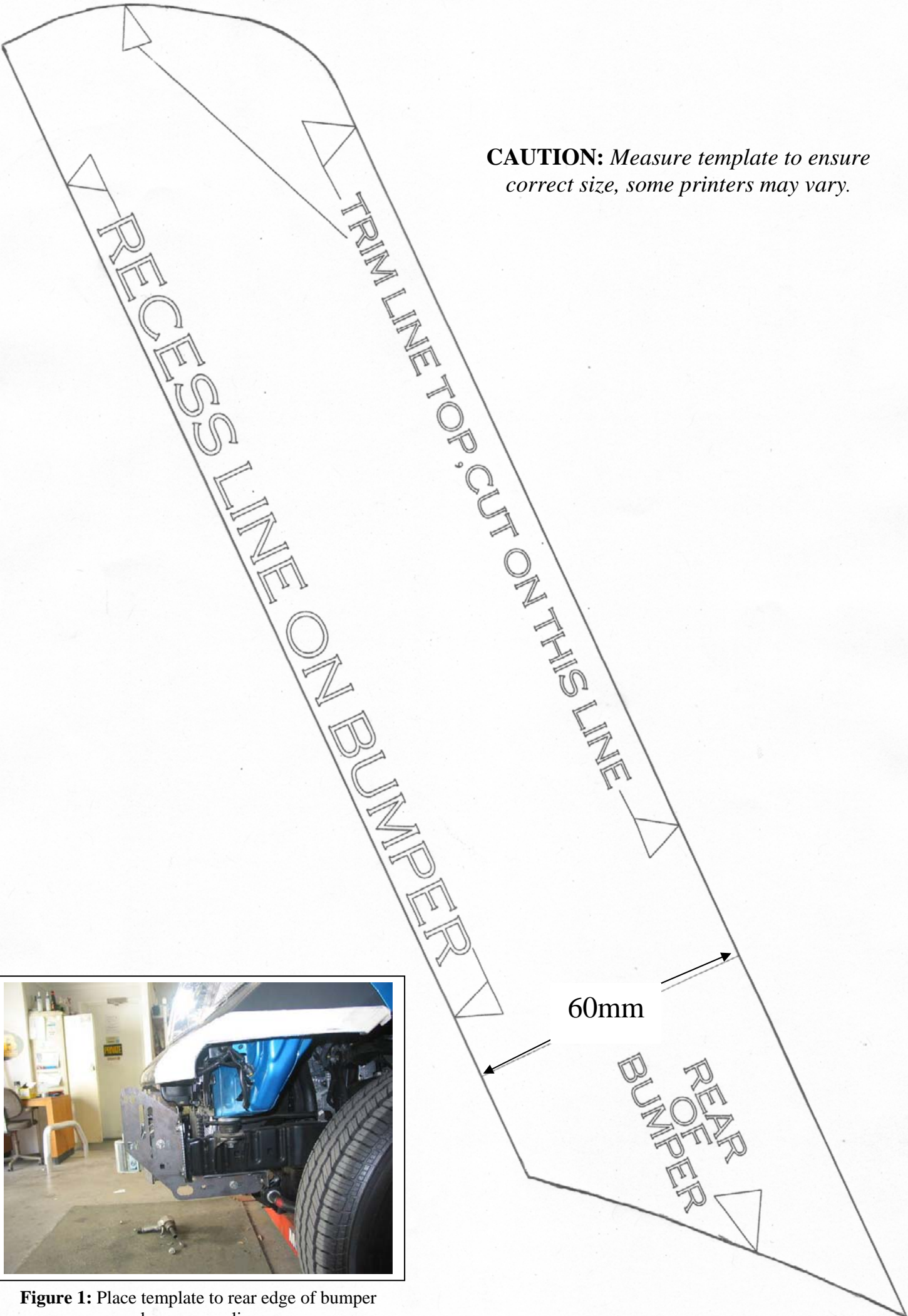


Figure 1: Place template to rear edge of bumper above crease line.



**WORLD'S BEST
ALLOY BULLBARS**

East Coast Bullbars (ECB Pty Ltd)

Tel: 07 3897 5700

Fax: 07 3283 1168

ecb@ecb.com.au www.ecb.com.au

29 Snook St
Clontarf QLD 4019
Australia

Po Box 122
Margate QLD 4019
Australia



WORLD'S BEST
ALLOY BULLBARS

East Coast Bullbars (ECB Pty Ltd)

Tel: 07 3897 5700

Fax: 07 3283 1168

ecb@ecb.com.au www.ecb.com.au

29 Snook St
Clontarf QLD 4019
Australia

Po Box 122
Margate QLD 4019
Australia



Figure 2: Use a jigsaw to cut the marked side of the bumper cover.

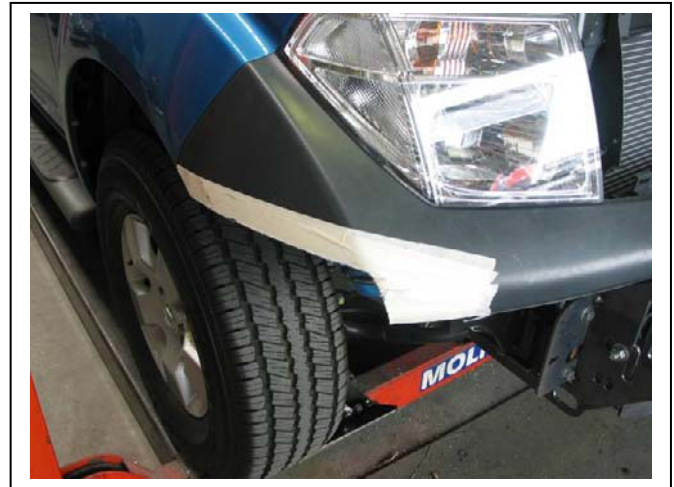
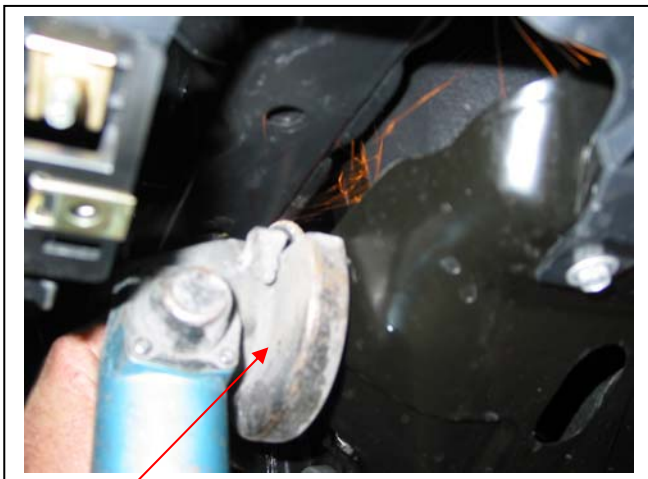
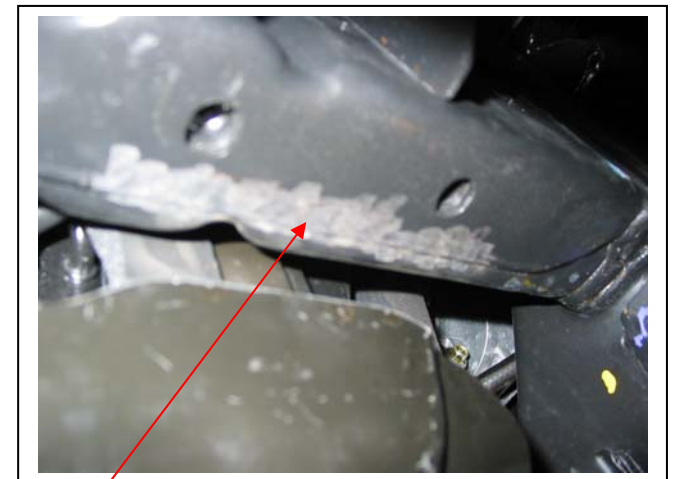


Figure 3: Use a sharp knife to cut front of bumper along crease line.



Air grinder

Figure 4



Chassis lip
ground flush

Figure 5

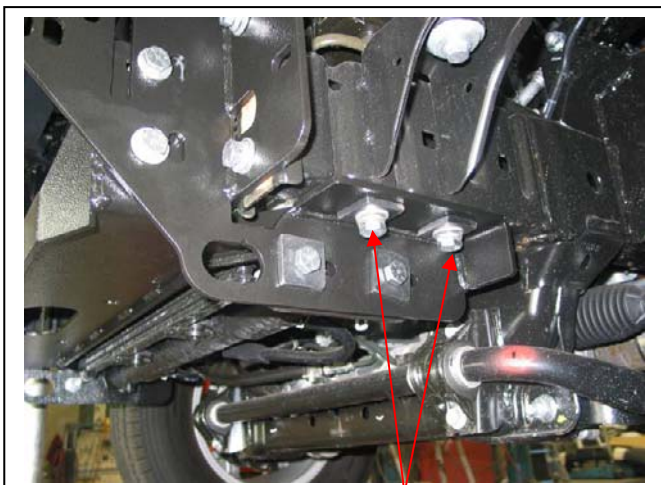


Figure 6: Note placement of 40 x 40 steel washers. Winch bracket shown in place.

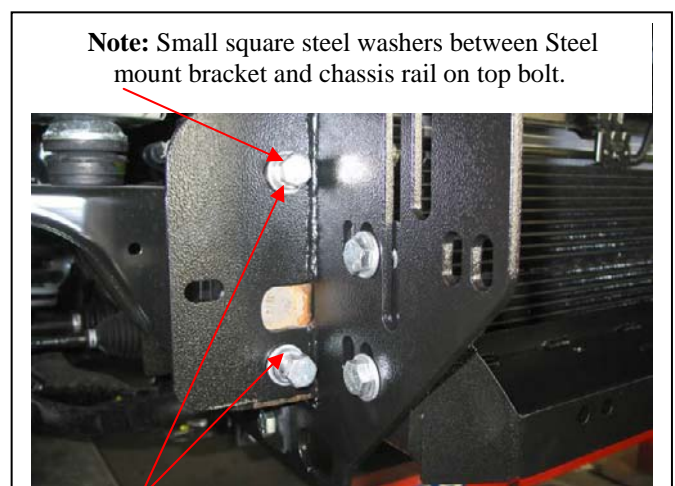


Figure 7: Bolts in chassis rail in top and bottom to suit duel cab. Extra cab sits side to side



WORLD'S BEST
ALLOY BULLBARS

East Coast Bullbars (ECB Pty Ltd)

Tel: 07 3897 5700

Fax: 07 3283 1168

ecb@ecb.com.au www.ecb.com.au

29 Snook St
Clontarf QLD 4019
Australia

Po Box 122
Margate QLD 4019
Australia



Figure 8: Fairlead rollers loosely attached to winch frame



Figure 9: Placement of 40 x 40 steel washers



Figure 10: Approximate trim on Engine shield.

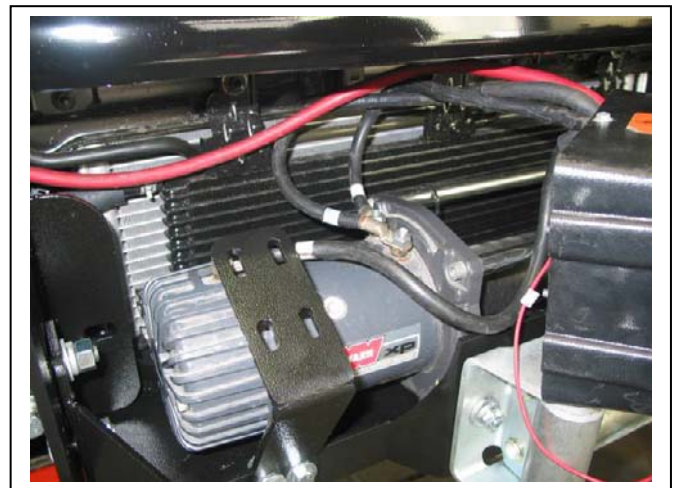
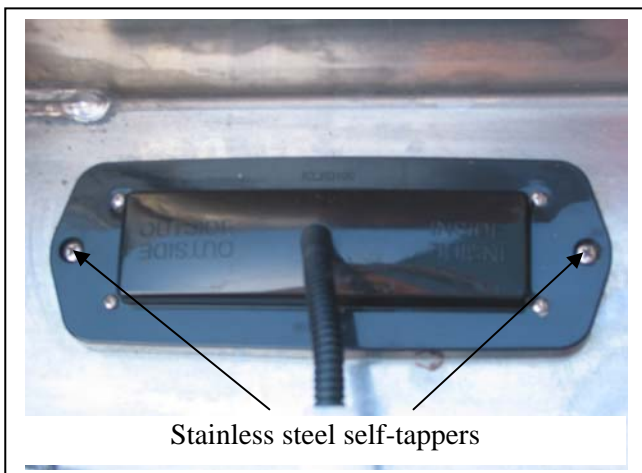
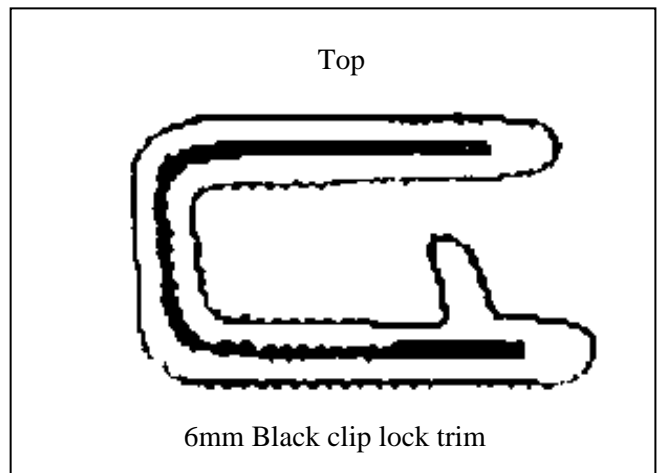


Figure 11: Ensure winch wiring is clear of hot and sharp objects.



Stainless steel self-tappers

Figure 12



6mm Black clip lock trim

Figure 13



WORLD'S BEST
ALLOY BULLBARS

East Coast Bullbars (ECB Pty Ltd)

Tel: 07 3897 5700

Fax: 07 3283 1168

ecb@ecb.com.au www.ecb.com.au

29 Snook St
Clontarf QLD 4019
Australia

Po Box 122
Margate QLD 4019
Australia

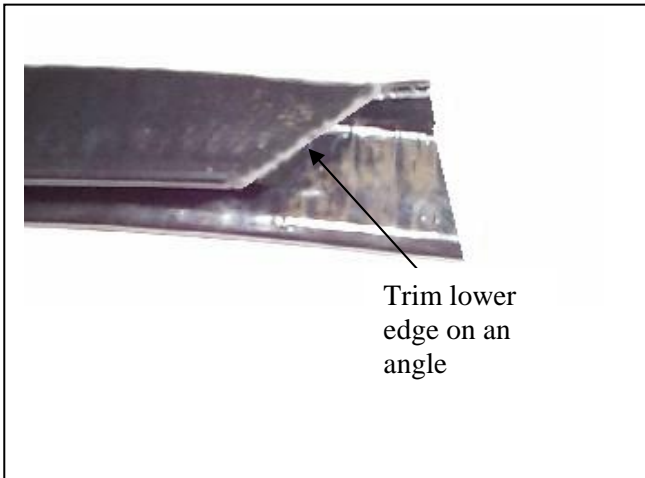


Figure 14

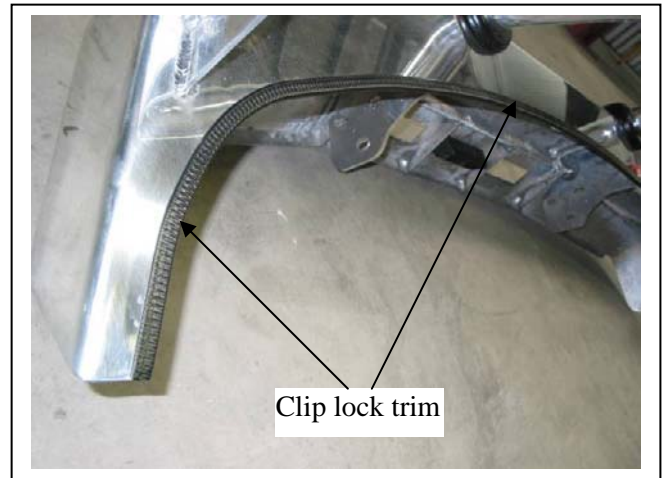


Figure 15



Figure 16: 3mm clip lock trim on outer cut edge of plastic bumper.



Figure 17: Front view



Figure 18: Side view



Figure 19: Inspection holes in top of Protection Bar



**WORLD'S BEST
ALLOY BULLBARS**

East Coast Bullbars (ECB Pty Ltd)

Tel: 07 3897 5700

Fax: 07 3283 1168

ecb@ecb.com.au www.ecb.com.au

29 Snook St
Clontarf QLD 4019
Australia

Po Box 122
Margate QLD 4019
Australia

We value your comments

Dear Fitter,

ECB would like to know how you went with the installation of this product. We value your comment and may need to contact you to clarify some details so please complete your contact details clearly.

We would appreciate if you could complete as many of the following details as possible.

Your Name:	Your contact No.
Product Part No.	Product Invoice No.
Product Description:	Make, model, and year of vehicle:
Product Work Order No.	Company your from/Company product purchased from:

Date of Fitment: ____/____/____

Was the fitting hardware supplied complete?

Yes

No

If no what was not supplied

Did the installation go well?

Yes

No

Please provide comments

Please draw diagrams if you need to.

Post to
Reply Paid 122
PO Box 122
Margate QLD 4019

Fax to
(07) 3283 1168



**WORLD'S BEST
ALLOY BULLBARS**

East Coast Bullbars (ECB Pty Ltd)

Tel: 07 3897 5700

Fax: 07 3283 1168

ecb@ecb.com.au www.ecb.com.au

29 Snook St
Clontarf QLD 4019
Australia

Po Box 122
Margate QLD 4019
Australia



WORLD'S BEST
ALLOY BULLBARS

East Coast Bullbars (ECB Pty Ltd)

Tel: 07 3897 5700

Fax: 07 3283 1168

ecb@ecb.com.au www.ecb.com.au

29 Snook St
Clontarf QLD 4019
Australia

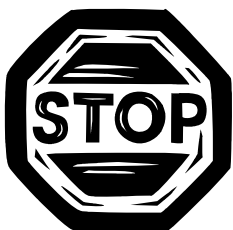
Po Box 122
Margate QLD 4019
Australia

DESPATCH CHECKLIST EAN63SY

Work Order #	
Finish:	
Transport:	
Due Date:	

- 1 – Pair Steel mounting brackets. **Caution: Front mount plates are sided.**
- 1 – Steel winch frame. Powder coated black.
- 1 – Steel control box mount
- 2 – Fog light trims
- 1 – Bolt Kit
- 1 – ECB LED Indicator / Park light kit.
- 1 – 2400mm length 6mm clip lock trim
- 2 – 500mm lengths 3mm clip lock trim
- 2 – ECB Overrides – **Fitted to Bar**
- 5 – 6mm Air Scoops – **Fitted to Bar**

**See other side of
this page for
photos of all
mounts**



Is this product “the best it can be” Yes _____/_____

Wrapper's initials / Checker initials

If **NO** fix before continuing

All parts checked and completed by:

Nut and bolts: _____ Date __/__/__

Order control: _____ Date __/__/__

Final wrap check: _____ Date __/__/__



**WORLD'S BEST
ALLOY BULLBARS**

East Coast Bullbars (ECB Pty Ltd)

Tel: 07 3897 5700

Fax: 07 3283 1168

ecb@ecb.com.au www.ecb.com.au

29 Snook St
Clontarf QLD 4019
Australia

Po Box 122
Margate QLD 4019
Australia



**WORLD'S BEST
ALLOY BULLBARS**

East Coast Bullbars (ECB Pty Ltd)

Tel: 07 3897 5700

Fax: 07 3283 1168

ecb@ecb.com.au www.ecb.com.au

29 Snook St
Clontarf QLD 4019
Australia

Po Box 122
Margate QLD 4019
Australia

