



**WORLD'S BEST
ALLOY BULLBARS**

East Coast Bullbars (ECB Pty Ltd)

Tel: 07 3897 5700

Fax: 07 3283 1168

ecb@ecb.com.au www.ecb.com.au

29 Snook St
Clontarf QLD 4019
Australia

Po Box 122
Margate QLD 4019
Australia

EAMA51SY

REPLACES: 04.06.12

REVISED: 16.01.18

FITTING INSTRUCTIONS

MAZDA BT - 50 10/11on WINCH COMPATIBLE ECB ARC™ BAR WITH FOG LIGHTS TO SUIT WARN XP9500 VEHICLE FRONTAL PROTECTION SYSTEM (VFPS) FOR AIR BAG & ADR COMPLIANT VEHICLES

Check installation hardware before commencing.

1. Lift bonnet.
2. Under front of wheel arch remove four plastic screw clips and one PK screw (per side), where bumper meets guard. Pull inner guard away from bumper to allow room for bumper cutting tools.
3. Using paper masking tape, cover cut area on sides and front of bumper ready for marking trim area. Measure from guard join with bumper 100mm top and bottom. **See figure 1.** Join with a straight line. Cut template 1 from fitting instruction using sharp scissors. Place template 1 over side of bumper, aligning to headlight. Mark cut line on template. Cut line continues across vehicle on body line under grille on bumper.
4. Check, check and double check cut lines are correct before cutting bumper. Trim bumper along marked line. Remove four 10mm head bolts from underside of bumper. Disconnect fog lights (if fitted). Remove lower section of bumper
5. Remove three push pull clips from top cover on grille. Slide hand under cover and push centre of clip to rear to remove two clips on sides and eight clips holding front of cover. Remove cover. **CAUTION:** Excessive force will damage clips on cover. **See figure 2.**
6. Remove two push pull plastic clips from top outer corners of grille. Pull top of grille forward to allow hand room under centre air dam. Using a flat screw driver, place tip of screw driver through hole between air dam and bumper on outer corner of bumper/grille join. Gently lever clip down to release centre of clip while pulling grille forward. Release all clips on grille. **See figures 3.**
7. From behind grille remove one 10mm head bolt and one push pull plastic clip from inner lower corner of headlight and two plastic screw clips from under grille.
8. Gently pull side of bumper out to release from guard clips. Remove upper section of bumper cover.
9. Remove plastic air dam from front of bumper support, four push pull plastic clips.
10. Remove two grey plastic clips from plastic air dam on rear of bumper support and two 15mm head bolts from front of under body steel guard. Loosen only the rear bolts from the under body steel guard and remove.
11. Remove bumper support, four 15mm head bolts. Return to customer for future refit should protection bar be removed.
12. Remove radiator air dams, two 8mm head bolts (per side). Retain bolts for refit at a later stage. Trim lower front from air dams to allow room for ECB steel mounting brackets. **See figures 4 and 5.** Drill holes in rear section of air dam to allow refit of air sensor.
13. Remove lower air dams from sides of chassis rails. These are held on by a white plastic bung pushed into the chassis rail between the radiator and chassis rail. **See figure 6.** To remove, use a flat bladed screwdriver to lever away from chassis rail then push air dam rearward to allow access to bung behind radiator. Remove air dam from front of vehicle.
14. Remove four lower bumper supports. **See figures 7 and 8.**
15. Refit radiator air dams to radiator support using original equipment 8mm head bolts. Refit air sensor



**WORLD'S BEST
ALLOY BULLBARS**

East Coast Bullbars (ECB Pty Ltd)

Tel: 07 3897 5700

Fax: 07 3283 1168

ecb@ecb.com.au www.ecb.com.au

29 Snook St
Clontarf QLD 4019
Australia

Po Box 122
Margate QLD 4019
Australia

16. Fit ECB steel winch frame to front of chassis using four original equipment bolts and eight ½ x 1 ½ bolts, flat washers, spring washers and nuts (supplied) to front of chassis rails. **Tighten all bolts. See figure 9.**
17. Install winch into ECB winch frame (supplied) with fairlead roller to bottom bolts. Use bolts supplied with winch to install. Do not wire control box at this point.
18. Align ECB steel mounting brackets (supplied) to slot in side of winch frame and front hole in side of chassis. Mark rear hole on side of chassis. Centre punch and drill to 10mm. Ensure hole is drilled at 90 degrees to chassis rail as a brace plate is fitted to these same bolts on the inside.
19. Enlarge outer holes to accept 48mm spacer tube. **Blow filings clear and treat all exposed metal with a rust inhibitor.**
20. Place 3/8 x 3 ½ bolts and washers (supplied) through rear holes on ECB steel mounting brackets. Over bolts place 48mm spacer tubes (supplied). Fit ECB mounting bracket to pre drilled holes in chassis rail, fitting ECB winch support bracket (supplied) on inside of chassis and flat washers, spring washers and nuts (supplied). **Finger tighten only.**
21. Attach inside of ECB winch support bracket to ECB winch frame using ½ x 1 ½ bolts, flat washers, spring washers and nuts (supplied). Place head of bolt up from underside of winch frame to allow easier fitment of original equipment under body guard. **See figure 10.**
22. Align ECB steel mounting brackets to winch frame and **tighten all bolts.**
23. Attach ECB control box mount (supplied) to drivers side of ECB winch frame using two 3/8 x 1 ½ bolts, flat washers, spring washers and nuts (supplied). **See figure 11** Fit winch control box to control box mount using nuts supplied with winch and two M6 washers (supplied). Wire winch control box as per winch manufacturers instructions.
24. Disconnect indicator and parking lights on vehicle. Install ECB quick click wiring harnesses (supplied) between disconnected harness and indicator / park lights on vehicle. Run wiring out from under lights ensuring clearance from sharp edges and moving parts.
25. Install ECB quick click wiring harness into original equipment fog light connectors. Should vehicle not have original equipment fog lights, an aftermarket wiring harness will need to be installed.
26. Refit top of bumper and grille as per reverse of steps 5 to 8, including two PK screws in end of bumper cover to guard. Attach 3mm clip lock trim to lower outer edge of bumper cover. **NOTE:** Trim off lower edge on an angle so trim will sit flush with end of bumper cover. **See figure 12.**
27. Attach 6mm clip lock trim (supplied) to top of ECB protection bar and fairlead hole in centre of skirt. **NOTE:** Trim off lower edge on an angle so trim will sit flush with end of protection bar. **See figures 13, 14 and 15.**
28. Fit ECB LED indicator / park lights into protection bar as per instructions supplied with the LED indicator kit. **NOTE: Ensure park light is to outside. See figure 16.**
29. Attach ECB fog lights to protection bar. Place M6 x 20 bolts, spring washers (supplied) through light mount from inside and attach nut to top. Slide assembly into light mount in Protection bar and centralize light to hole. **TIGHTEN FIRM ONLY.** Fit ECB fog light trims (supplied) to protection bar. **See figure 17.**
30. Fit ECB protection bar to outside of ECB steel mounting brackets using ½ x 1 ½ bolts, flat washers, spring washers and nuts (supplied). **Finger tighten only.**
31. Align ECB protection bar to vehicle. **See figures 18 and 19. Tighten all bolts.**
32. Connect and check ECB indicator / park lights and fog lights for correct operation. Fit round surrounds (supplied) into winch access holes in front of channel.
33. Refit under body steel guard using original bolts into ECB steel winch frame at front. **Tighten all bolts.**
34. Install ECB under body guards to top of lower leg of channel section of protection bar with rear flange pointing down. **See figure 20.** Access to inner hole from side of plate, rear hole from behind inner guard and front outer hole through access



hole in under body guard. Use two M6 x 25 bolts, one M6 x 25 bolt and washer on 100mm wire, flat washers and nyloc nuts (per side). **See figure 21**

- 35. Using under body guard as a guide, drill holes in inner guard to 6mm and attach using two M6 x 20 bolts, flat washers and nyloc nuts (per side). Trim inner guards from bottom of channel to vehicles inner guard removing lower section. **See figure 22.**

ENSURE NUMBER PLATE IS CLEARLY VISABLE

Note: When fitting/refitting the licence plate to the vehicle, ensure there is no obstruction to licence plate vision in accordance with local authorities. If required relocate licence plate to an alternate location.

Further VFPS Notes:

- a) Do not attach VFPS to the vehicle using anchorages not intended for this purpose (e.g. engine mounting bolts).
- b) Do not use this product for any vehicle make or model, other than those specified by the VFPS manufacturer.
- c) Do not remove the plaque or label from the VFPS.
- d) Do not modify the structure of the VFPS in any way.
- e) No accessory or fitment should project forward of the VFPS forward profile.
- f) **ENSURE THESE INSTRUCTIONS ARE LEFT WITH VEHICLE OWNER AND/OR OPERATOR.**

IMPORTANT INFORMATION

Periodically check bolts and nuts for correct tightness, especially if travelling on rough roads

FITTING KIT

| | |
|--|---|
| 2 – ECB steel bar mounting bracket | 4 – M6 x 25 bolts |
| 1 – ECB steel winch frame | 10 – M6 x 20 bolts |
| 1 – Pair ECB winch frame support brackets | 2 – M6 x 25 bolts and washers on 100mm wire |
| 1 – Pair Alloy Under Body Guard marked (MW) (P/C BLACK) | 28 – M6 flat washers |
| 1 – ECB steel control box bracket | 2 – M6 spring washers |
| 4 – 10 nb steel tube spacers, 48mm long | 14 – M6 nyloc nuts |
| 18 – ½ x 1 ½ bolts | 2 – M6 nuts |
| 36 – ½ flat washers | 1 – ECB indicator / park light kit |
| 18 – ½ spring washers | 1 – ECB quick click harness kit (IC11RANGLED100H) |
| 18 – ½ nuts | 1 – ECB fog light kit |
| 2 – 3/8 x 1 ½ bolts | 1 – ECB quick click fog light harness kit (IC11RAN1004ECBH) |
| 4 – 3/8 x 3 ½ bolts | 4 – fog light surrounds |
| 12 – 3/8 flat washers | 2 – 650mm Lengths 3mm clip lock trim |
| 6 – 3/8 spring washers | 1 – 2450mm Length 6mm clip lock trim |
| 6 – 3/8 nuts | 1 – 650mm length 6mm clip lock trim |



East Coast Bullbars (ECB Pty Ltd)

Tel: 07 3897 5700

Fax: 07 3283 1168

ecb@ecb.com.au www.ecb.com.au

WORLD'S BEST
ALLOY BULLBARS

29 Snook St
Clontarf QLD 4019
Australia

Po Box 122
Margate QLD 4019
Australia

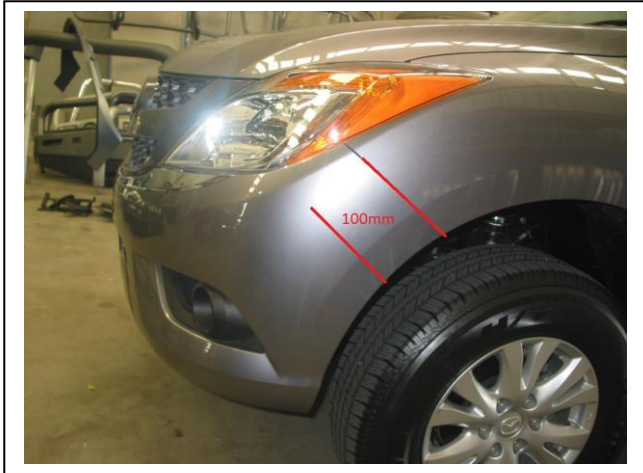


Figure 1: After masking vehicle, measure 100mm from guard joint.



Figure 2: Clip on front of grille cover



Figure 3: Clip on underside of grille

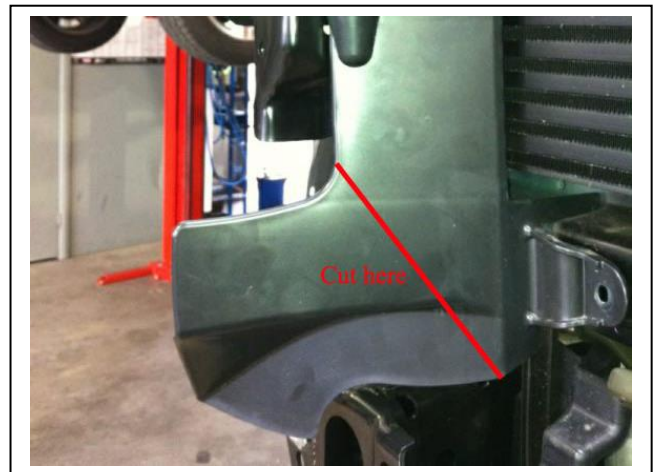


Figure 4: Drivers die air dam

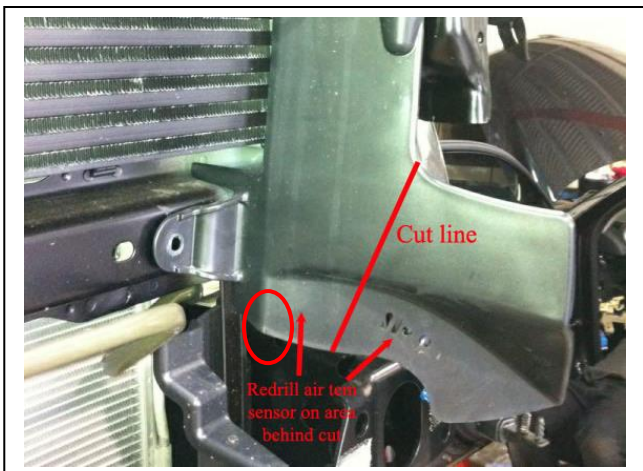


Figure 5: Passengers side air dam trim line and Air sensor positioning shown.

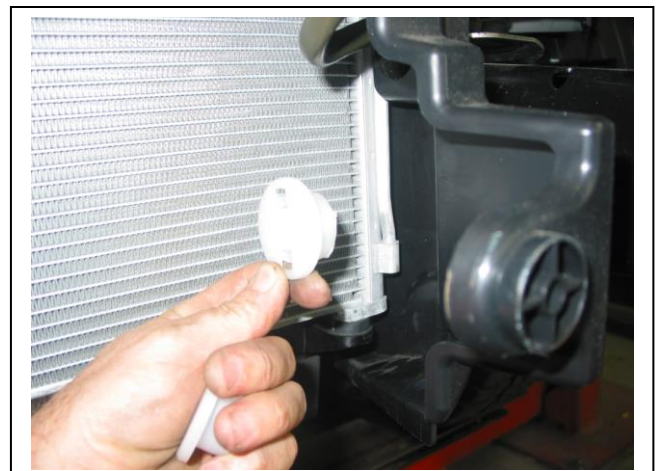


Figure 6: White plastic plug between radiator and chassis rail. Removed for photo.

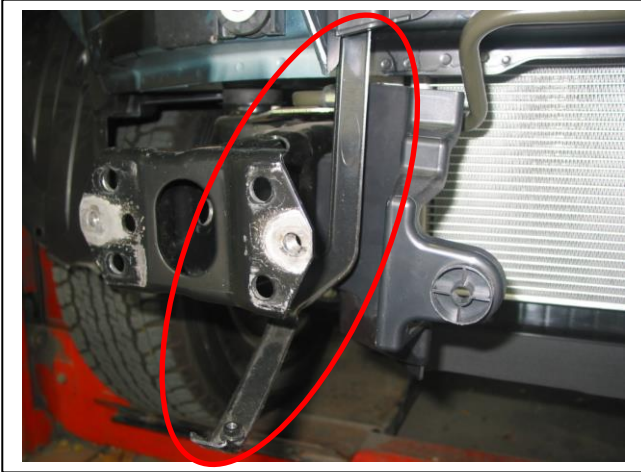


Figure 7: Remove center lower bumper supports



Figure 8: Remove side lower bumper supports.

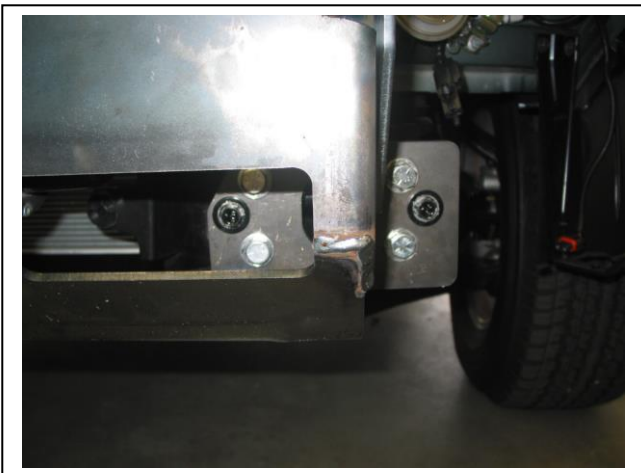


Figure 9: Use original equipment bolts in front of chassis

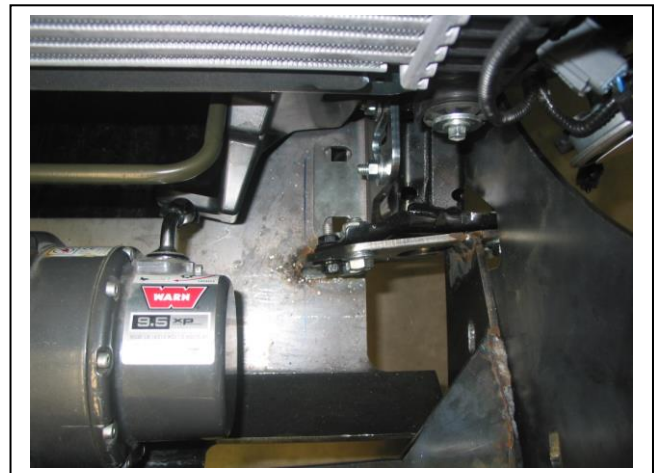


Figure 10: ECB Winch frame support bracket



Figure 11: ECB control box mount



Figure 12: 3mm clip lock trim fitted to bumper cover



East Coast Bullbars (ECB Pty Ltd)

Tel: 07 3897 5700

Fax: 07 3283 1168

ecb@ecb.com.au www.ecb.com.au

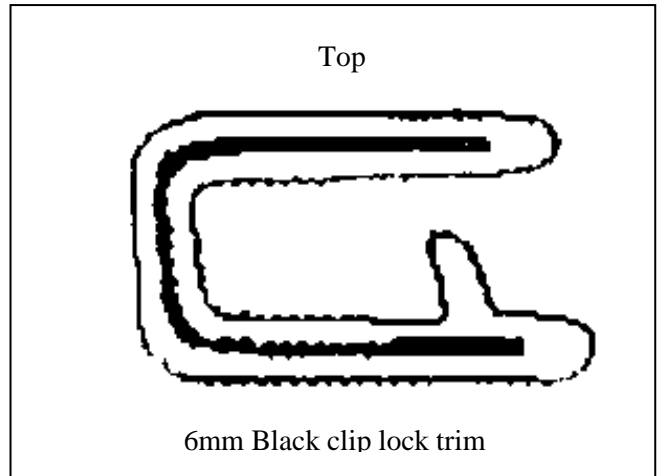
29 Snook St
Clontarf QLD 4019
Australia

Po Box 122
Margate QLD 4019
Australia

WORLD'S BEST
ALLOY BULLBARS



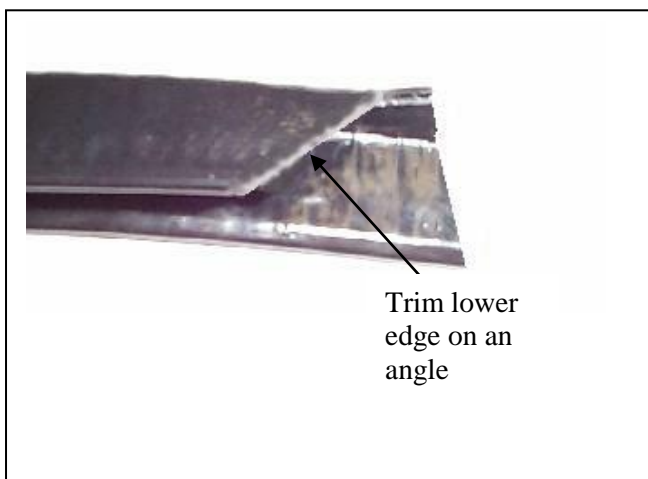
Figure 13: Centre clip lock trim fitted



Top

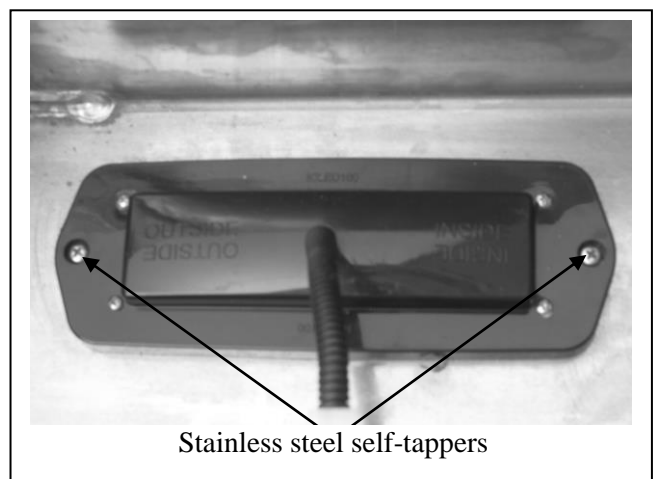
6mm Black clip lock trim

Figure 14



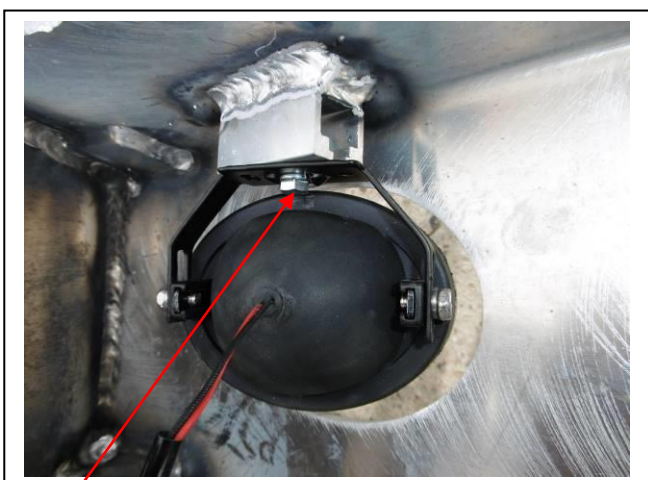
Trim lower edge on an angle

Figure 15



Stainless steel self-tappers

Figure 16



M6 bolt

Figure 17



Figure 18: Front view



East Coast Bullbars (ECB Pty Ltd)

Tel: 07 3897 5700

Fax: 07 3283 1168

ecb@ecb.com.au www.ecb.com.au

29 Snook St
Clontarf QLD 4019
Australia

Po Box 122
Margate QLD 4019
Australia

WORLD'S BEST
ALLOY BULLBARS



Figure 19: Side view



Figure 20: Approximate inner guard trim lines.
Bumper removed for photo.



Figure 21: Placement of under body guard.
Bumper removed for photo.



Figure 22: Placing bolt in from side of under
body guard.



Figure 23: Cut line for inner guard.



**WORLD'S BEST
ALLOY BULLBARS**

East Coast Bullbars (ECB Pty Ltd)

Tel: 07 3897 5700

Fax: 07 3283 1168

ecb@ecb.com.au www.ecb.com.au

29 Snook St
Clontarf QLD 4019
Australia

Po Box 122
Margate QLD 4019
Australia

We value your comments

Dear Fitter,

ECB would like to know how you went with the installation of this product. We value your comment and may need to contact you to clarify some details so please complete your contact details clearly.

We would appreciate if you could complete as many of the following details as possible.

| | |
|-------------------------------|--|
| Your Name: | Your contact No. |
| Product Part No. | Product Invoice No. |
| Product Description: | Make, model, and year of vehicle: |
| Product Work Order No. | Company your from/Company product purchased from: |

Date of Fitment: ____/____/____

Was the fitting hardware supplied complete?

Yes

No

If no what was not supplied

Did the installation go well?

Yes

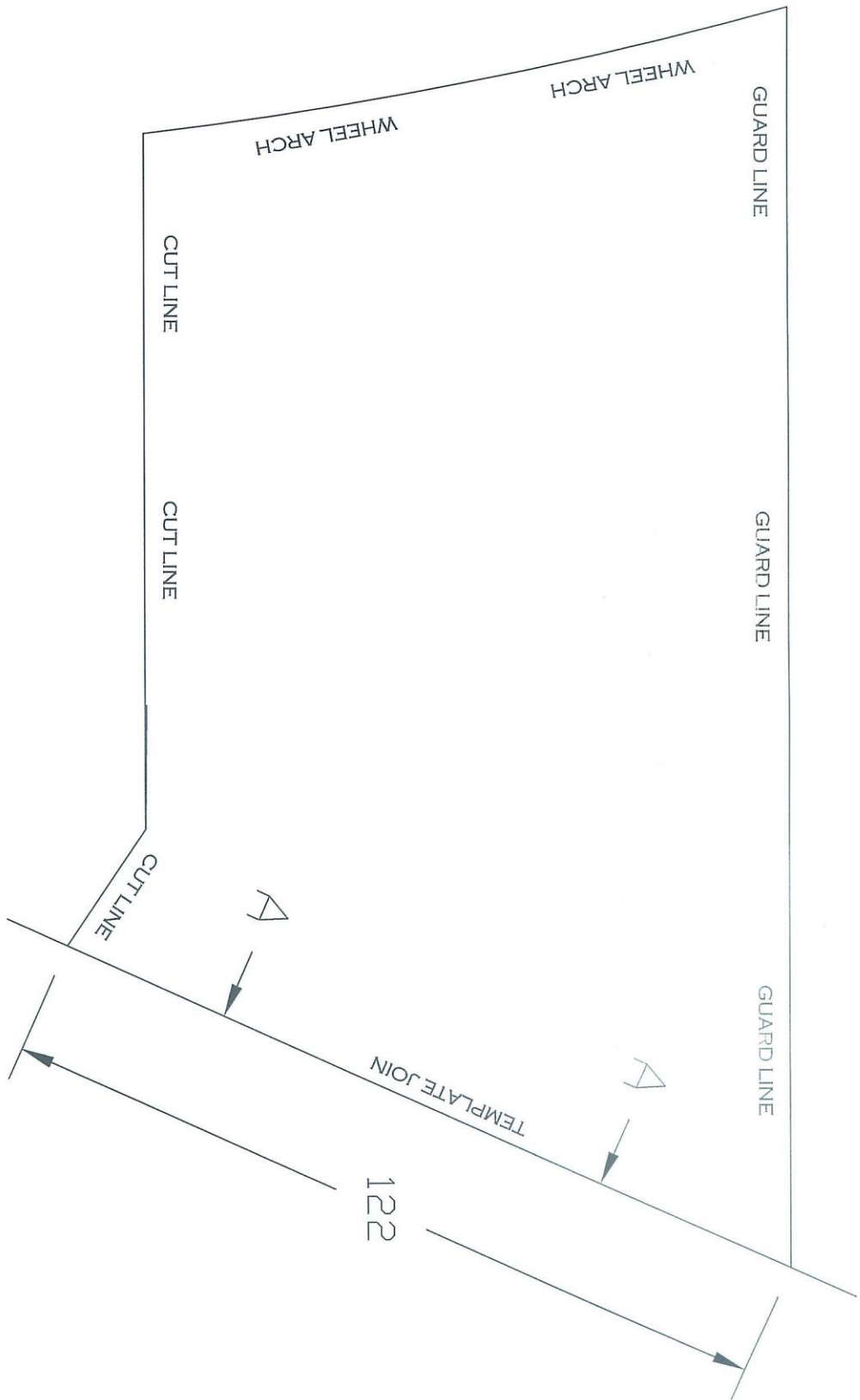
No

Please provide comments

Please draw diagrams if you need to.

Post to
Reply Paid 122
PO Box 122
Margate QLD 4019

Fax to
(07) 3283 1168





**WORLD'S BEST
ALLOY BULLBARS**

East Coast Bullbars (ECB Pty Ltd)

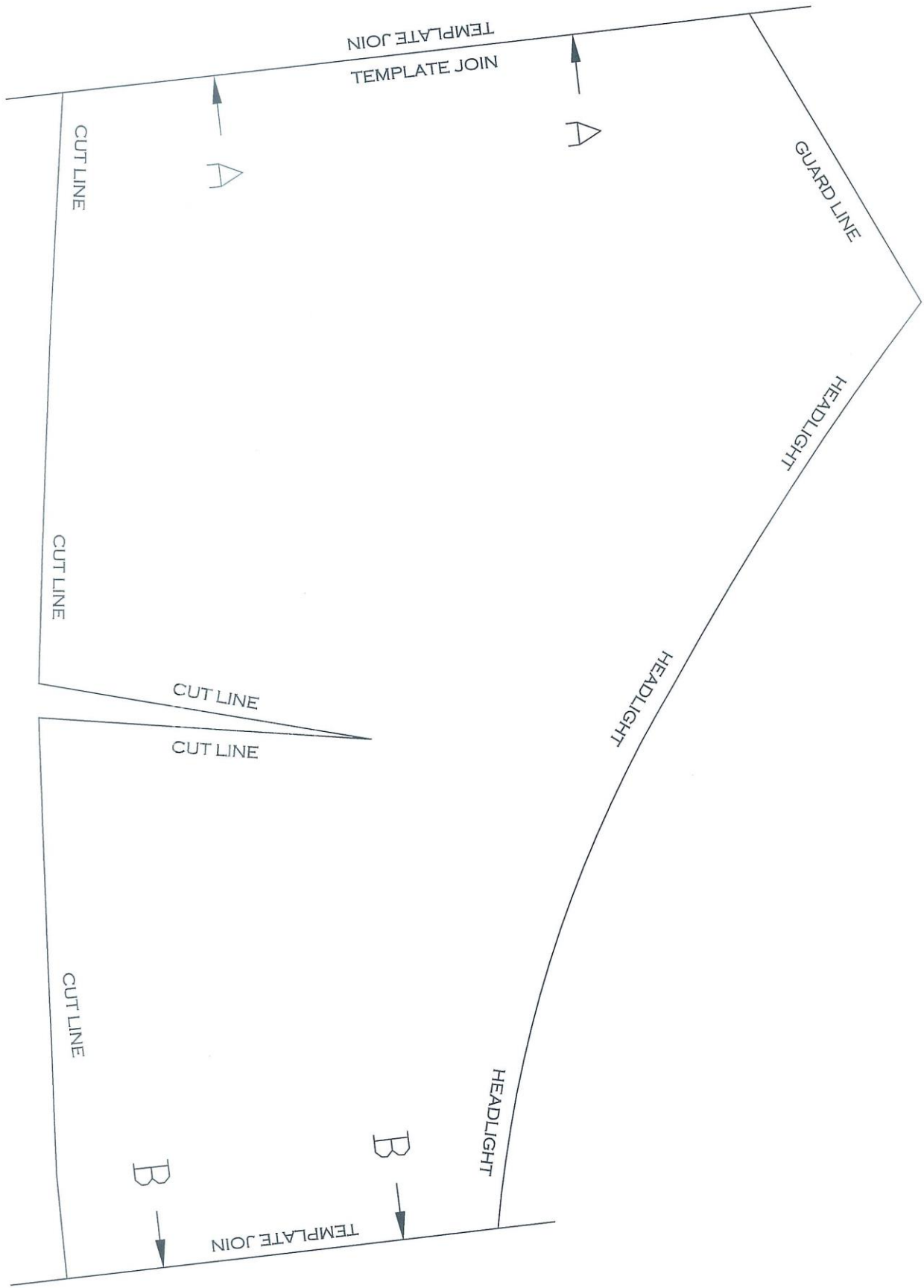
Tel: 07 3897 5700

Fax: 07 3283 1168

ecb@ecb.com.au www.ecb.com.au

29 Snook St
Clontarf QLD 4019
Australia

Po Box 122
Margate QLD 4019
Australia





**WORLD'S BEST
ALLOY BULLBARS**

East Coast Bullbars (ECB Pty Ltd)

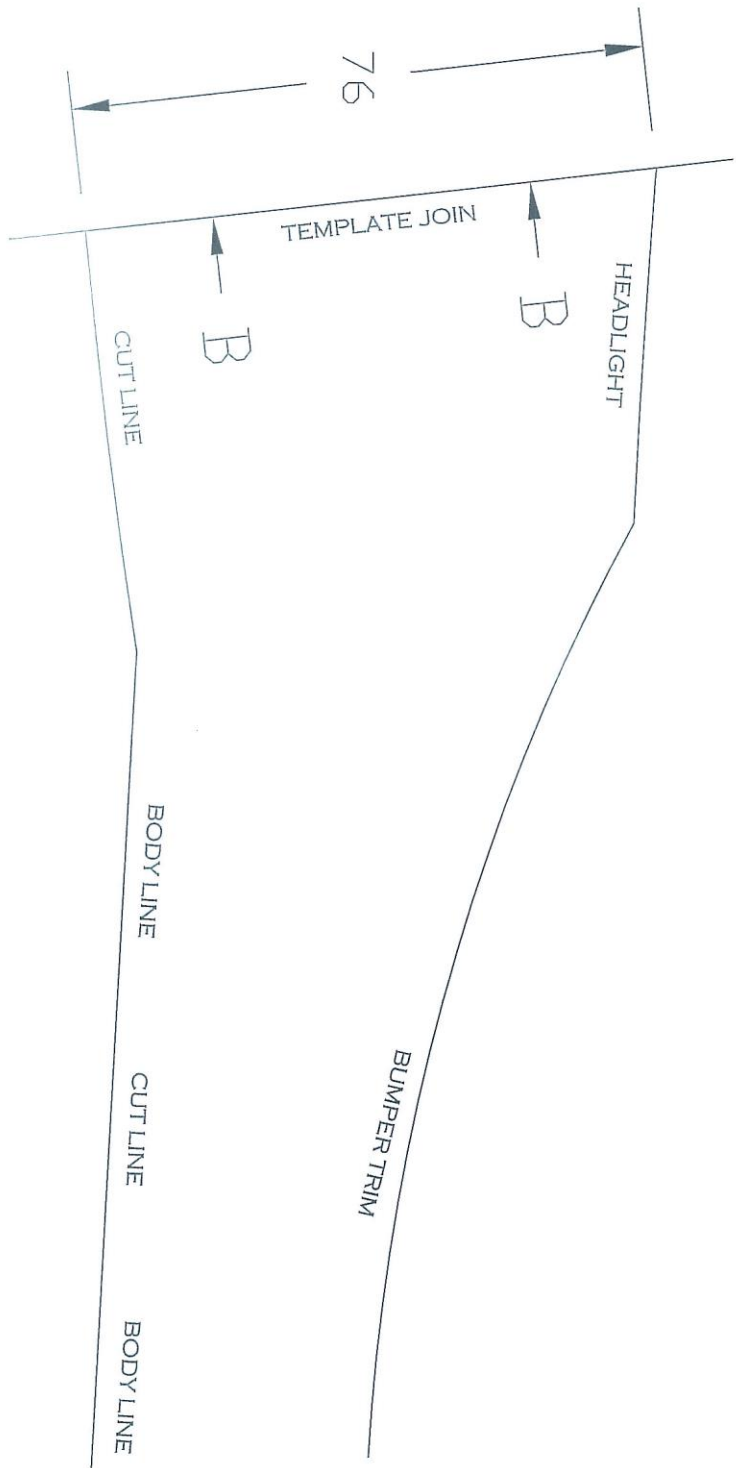
Tel: 07 3897 5700

Fax: 07 3283 1168

ecb@ecb.com.au www.ecb.com.au

29 Snook St
Clontarf QLD 4019
Australia

Po Box 122
Margate QLD 4019
Australia





**WORLD'S BEST
ALLOY BULLBARS**

East Coast Bullbars (ECB Pty Ltd)

Tel: 07 3897 5700

Fax: 07 3283 1168

ecb@ecb.com.au www.ecb.com.au

29 Snook St
Clontarf QLD 4019
Australia

Po Box 122
Margate QLD 4019
Australia



WORLD'S BEST ALLOY BULLBARS

East Coast Bullbars (ECB Pty Ltd)

Tel: 07 3897 5700

Fax: 07 3283 1168

ecb@ecb.com.au www.ecb.com.au

29 Snook St
Clontarf QLD 4019
Australia

Po Box 122
Margate QLD 4019
Australia

DESPATCH CHECKLIST EAMA51SY

| | |
|--------------|--|
| Work Order # | |
| Finish: | |
| Transport: | |
| Due Date: | |

- OC.....1 – ECB steel winch frame (P/C BLACK)
- OC.....1 – Pair ECB steel winch frame support brackets (P/C BLACK)
- OC.....1 – ECB control box bracket (P/C BLACK)
- OC.....1 – Pair Alloy Under Body Guard marked (MW) (P/C BLACK)
- OC.....2 – ECB steel bar mounting brackets
- BK.....1 – Bolt Kit.
- OC.....1 – Pair ECB Overriders – **Fitted to Bar**
- OC.....5 – 6mm Air Scoops – **Fitted to Bar**
- BK.....1 – ECB indicator / park light kit
- BK.....1 – ECB indicator wiring harness kit (IC11RANGLED100)
- BK.....1 – ECB fog light kit (IC1004ECB)
- BK.....1 – ECB fog light wiring harness (IC11RAN1004ECBH)
- BK.....4 – fog light surrounds
- BK.....2 – 650mm lengths, 3mm clip lock trim
- BK.....1 – 2450mm length, 6mm clip lock trim
- BK.....1 – 650mm length 6mm clip lock trim

**See other side of
this page for
photos of all
mounts**



Is this product “the best it can be” Yes
If **NO** fix before continuing

_____/_____
Wrapper's initials / Checker initials

All parts checked and completed by:

Nut and bolts: _____ Date __/__/__

Order control: _____ Date __/__/__

Final wrap check: _____ Date __/__/__



East Coast Bullbars (ECB Pty Ltd)

Tel: 07 3897 5700

Fax: 07 3283 1168

ecb@ecb.com.au www.ecb.com.au

29 Snook St
Clontarf QLD 4019
Australia

Po Box 122
Margate QLD 4019
Australia

WORLD'S BEST
ALLOY BULLBARS

Steel bar mounting brackets

1 Pair Steel winch frame support brackets (P/C Black)

Steel control box
bracket (P/C
Black)

Winch mounting bracket (P/C Black)

Wrapper's initials / Checker initials

Alloy Under Body Guards (MW)