



WORLD'S BEST
ALLOY BULLBARS

East Coast Bullbars (ECB Pty Ltd)

Tel: 07 3897 5700

Fax: 07 3283 1168

ecb@ecb.com.au www.ecb.com.au

29 Snook St
Clontarf QLD 4019
Australia

Po Box 122
Margate QLD 4019
Australia

EAIZ73SY

REPLACES: 00.00.00

REVISED: 16.01.18

FITTING INSTRUCTIONS

ISUZU DMAX 6-12 on ECB ARC BAR WINCH COMPATIBLE (WITH FOG LIGHTS) VEHICLE FRONTAL PROTECTION SYSTEM (VFPS) FOR AIR BAG & ADR COMPLIANT VEHICLES

Check installation hardware before commencing.

1. Lift bonnet
2. Remove four push pull plastic clips from top of grille and one PK screw from lower centre of grille. While gently pulling grille out, release clips from bumper at bottom. Remove grille. **See figure 1.**
3. Remove four push pull plastic clips from top of bumper between headlights, one push pull plastic clip from guard to bumper join (per side), four push pull plastic clips from underside of bumper and one 10mm head nuts from inner guard to bumper (per side). Disconnect fog lights (if fitted). Gently pull sides of plastic bumper cover away from vehicle to release bumper side clips. Remove bumper.
4. Remove five 14mm head bolts on front under body guard. Remove under body guard.
5. Remove bumper support. Four 14mm head bolts.
6. Remove one 10mm head bolt from centre lower bumper stiffener (per side). Remove three 10mm head bolts from outer bumper stiffener (per side). Remove bumper stiffeners. **See figures 2 and 3.**
7. Disconnect indicator and parking lights on vehicle. Install ECB quick click wiring harnesses (supplied) between disconnected harness and indicator / park lights on vehicle. Run wiring out from under lights ensuring clearance from sharp edges and moving parts.
8. Connect ECB Quick Click fog light wiring harness (supplied) into original wiring harness.
9. Mark and cut lower air dams. **See figures 4 and 5.**
10. Remove upper bumper support and remove air bag sensor covers (six 10mm head bolts).
11. Using a drill, die grinder or similar, enlarge inner hole in chassis rail, just behind front plate to allow fitment of chassis spacer.
12. Fit ECB winch frame to front of chassis rails and secure using four M10 x 40 bolts, spring washers and flat washers (supplied). **Finger tighten only.** In rear of mount, install one M12 x 90 bolt, flat washes, chassis spacer, spring washers and nut (per side) (supplied) and one M12 x 40 bolt, flat washers, spring washer and nut into rear hole of mount. **See figure 6.**
13. Align ECB steel to body of vehicle. **Tighten all bolts.**
14. Fit fairlead roller to front of ECB winch frame using bolts supplied with winch. **Finger tighten only.**



**WORLD'S BEST
ALLOY BULLBARS**

East Coast Bullbars (ECB Pty Ltd)

Tel: 07 3897 5700

Fax: 07 3283 1168

ecb@ecb.com.au www.ecb.com.au

29 Snook St
Clontarf QLD 4019
Australia

Po Box 122
Margate QLD 4019
Australia

15. Install control box mount (supplied) to rear of control box using bolts / nuts supplied with winch. **See figure 7. Note:** There are two control box brackets supplied with this bar. One to fit the Warn Winch (and similar) control box and Mean Mother angle section which is used with the control box mount included with the winch. Wire winch as per manufacturers instructions.
16. Install winch into ECB winch frame using bolts supplied with winch. Attach control box to winch using two worm drive hose clamps (supplied) for Warn control box mount and Mean Mother control box mount as per instructions supplied with winch.
17. Refit upper bumper support and air bag sensor covers (six 10mm head bolts). **Caution: Air bag sensor covers must be replaced in correct position over sensor to minimise possible future damage to sensors.**
18. Using paper masking tape, cover area of bumper to be cut.
19. Check measure bumper template to ensure correct sizing. **NOTE: As printers vary, the size of the template may change. Ensure template is correct size before marking or cutting any part of vehicle.** Using sharp scissors or similar, cut bumper template (supplied). Using template, mark cut line on outer corners of plastic bumper. Across centre of plastic bumper measure 25mm up from top of grille openings. **See figure 8.**
20. Double check cut line for correct measurements. Cut lower section from plastic bumper. Clean and tidy edge as this is a finished part. Fit 3mm clip lock trim (supplied) to outer corners of plastic bumper. Inner edge of clip lock trim can be removed to allow trim to reach very rear edge of plastic bumper.
21. Fit bumper back to vehicle as per reverse of steps 2 and 3.
22. Attach 6mm clip lock trim (supplied) to top and winch opening of ECB protection bar. **NOTE:** Trim off lower edge on an angle so trim will sit flush with end of protection bar. **See figures 9, 10 and 11.**
23. Fit ECB LED indicator / park lights into protection bar as per instructions supplied with the LED indicator kit. **NOTE: Ensure park light is to outside. See figure 12.**
24. Attach ECB fog light bracket only to protection bar. Place M6 x 20 bolts, spring washers (supplied) through light mount from inside and attach nut to top. Slide assembly into light mount in Protection bar and centralize light to hole. **TIGHTEN FIRM ONLY. See figure 13.**
25. Fit ECB protection bar to outside of ECB steel mounting brackets using four M12 x 40 bolts, flat washers, spring washers and nuts (per side) (supplied). **Finger tighten only.**
26. Align ECB protection bar with front of vehicle. **Tighten all bolts. See figures 14 and 15.**
27. Install ECB fog lights to fog light mounts previously fitted. Aim lights at slight angle downward.
28. Connect and check all lights for correct operation.
29. Refit underbody guard to vehicle using original fasteners.
30. Trim inner guards and fix to radiator support using M6 x 30 bolt and flat washer into rear of captive nut. Fit M6 nyloc to rear of bolt to act as locking nut. **See figure 15.**



East Coast Bullbars (ECB Pty Ltd)

Tel: 07 3897 5700

Fax: 07 3283 1168

ecb@ecb.com.au www.ecb.com.au

WORLD'S BEST
ALLOY BULLBARS

29 Snook St
Clontarf QLD 4019
Australia

Po Box 122
Margate QLD 4019
Australia

ENSURE NUMBER PLATE IS CLEARLY VISABLE

Note: When fitting/refitting the licence plate to the vehicle, ensure there is no obstruction to licence plate vision in accordance with local authorities. If required relocate licence plate to an alternate location.

Further VFPS Notes:

- a) Do not attach VFPS to the vehicle using anchorages not intended for this purpose (e.g. engine mounting bolts).
- b) Do not use this product for any vehicle make or model, other than those specified by the VFPS manufacturer.
- c) Do not remove the plaque or label from the VFPS.
- d) Do not modify the structure of the VFPS in any way.
- e) No accessory or fitment should project forward of the VFPS forward profile.
- f) **ENSURE THESE INSTRUCTIONS ARE LEFT WITH VEHICLE OWNER AND/OR OPERATOR.**

IMPORTANT INFORMATION

Periodically check bolts and nuts for correct tightness, especially if travelling on rough roads

FITTING KIT

1 – ECB winch frame	2 – M6 x 20 bolts
2 – 15 nb steel spacer tube, 44mm long	2 – M6 x 30 bolts
1 – ECB steel control box bracket – <i>In kit</i>	2 – M6 flat washers
1 – ECB Mean mother control box bracket – <i>In kit</i>	2 – M6 spring washers
2 – 127mm worm drive hose clamps	2 – M6 nyloc nuts
2 – 40mm steel washer plates	2 – M6 nuts
10 – M12 x 1.75 x 40 bolts	1 – ECB LED Indicator / Park light kit (ICLED105ECB)
2 – M12 x 1.75 x 90 bolts	1 – Quick Click Indi / Park kit
24 – M12 flat washers	1 – ECB fog light kit
12 – M12 spring washers	1 – Quick Click fog wiring kit
12 – M12 x 1.75 nuts	4 – ECB fog light surrounds
4 – M10 x 1.25 x 40 bolts	2 – 350mm lengths 3mm clip lock trim
4 – M10 Flat washers	1 – 2500mm length 6mm clip lock trim
4 – M10 spring washers	1 – 700mm length 6mm clip lock trim



Figure 1: Lower outer clip on grille. Grille removed for photo.



Figure 2: Passengers side inner bumper stiffener



East Coast Bullbars (ECB Pty Ltd)

Tel: 07 3897 5700

Fax: 07 3283 1168

ecb@ecb.com.au www.ecb.com.au

WORLD'S BEST
ALLOY BULLBARS

29 Snook St
Clontarf QLD 4019
Australia

Po Box 122
Margate QLD 4019
Australia



Figure 3: Passengers side outer bumper stiffener

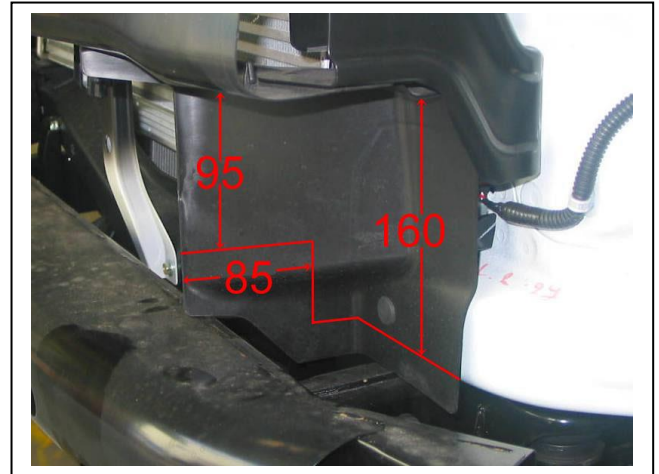


Figure 4: Measurement for air dam trim.

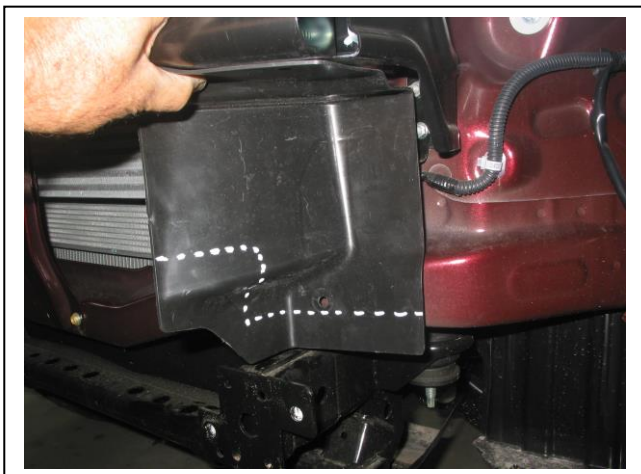


Figure 5: Passengers side air dam trim



Figure 6: ECB winch frame.



Figure 7: Warn XP9.5 fitted to winch frame.

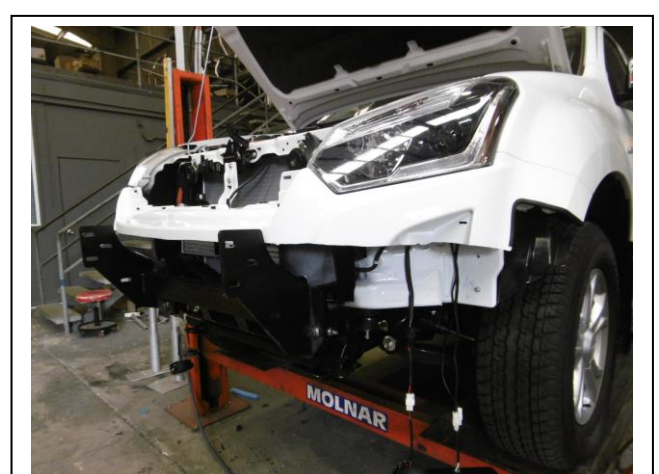


Figure 8



East Coast Bullbars (ECB Pty Ltd)

Tel: 07 3897 5700

Fax: 07 3283 1168

ecb@ecb.com.au www.ecb.com.au

WORLD'S BEST
ALLOY BULLBARS

29 Snook St
Clontarf QLD 4019
Australia

Po Box 122
Margate QLD 4019
Australia

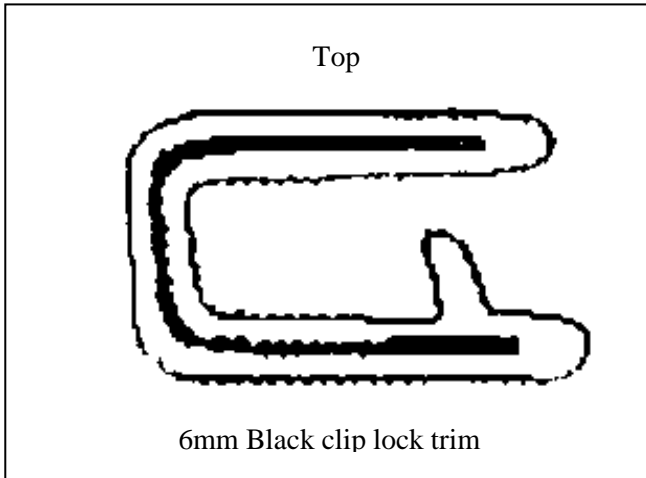


Figure 9

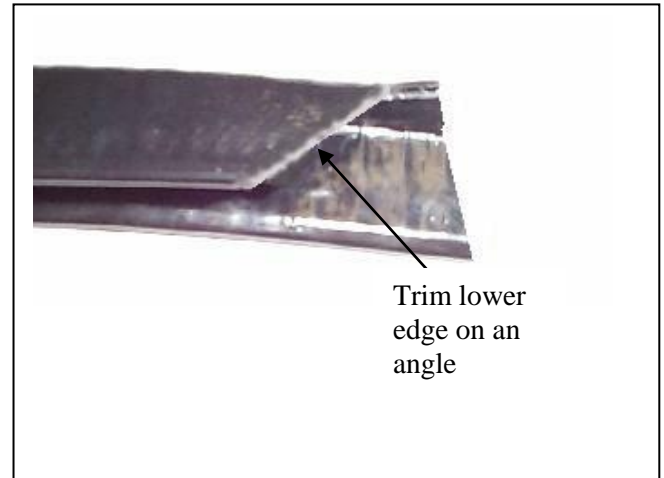


Figure 10

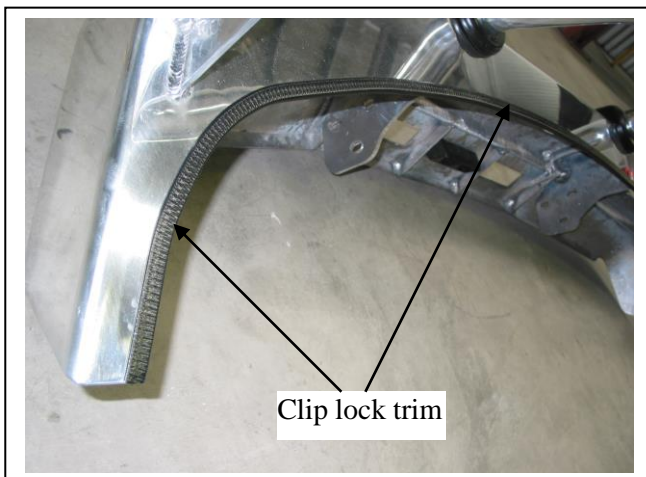


Figure 11

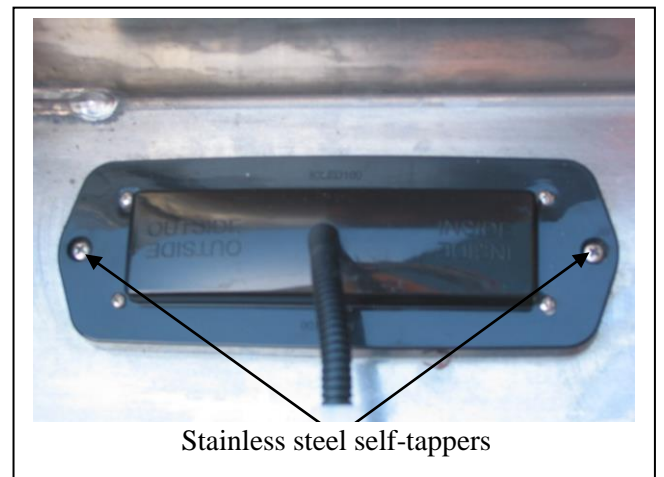


Figure 12

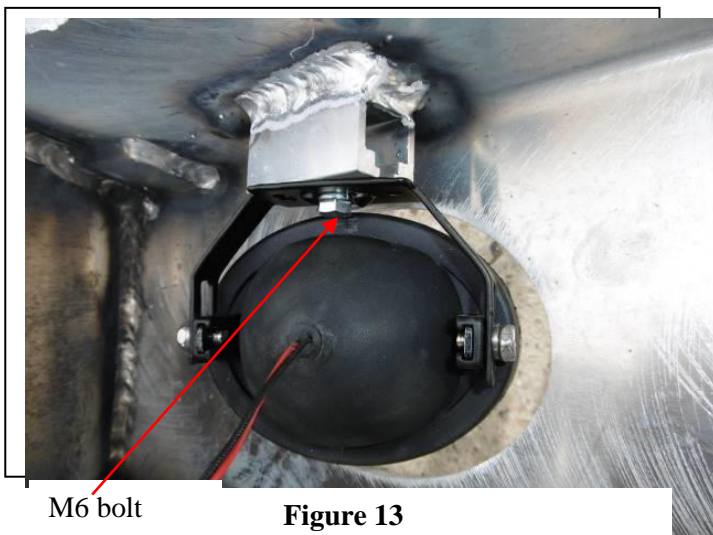


Figure 13



Figure 14



**WORLD'S BEST
ALLOY BULLBARS**

East Coast Bullbars (ECB Pty Ltd)

Tel: 07 3897 5700

Fax: 07 3283 1168

ecb@ecb.com.au www.ecb.com.au

29 Snook St
Clontarf QLD 4019
Australia

Po Box 122
Margate QLD 4019
Australia

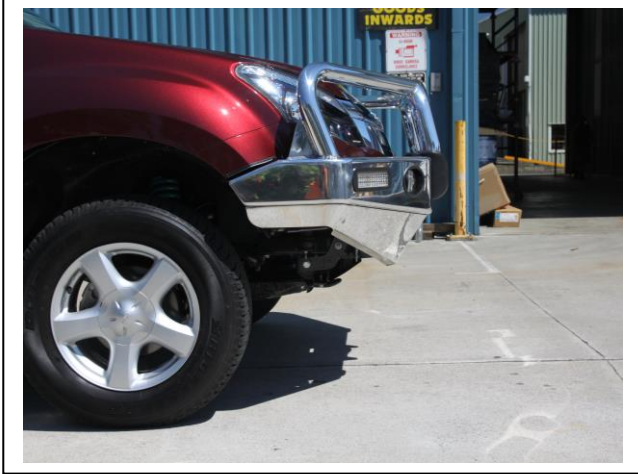


Figure 15



Figure 16

GUARD LINE

GUARD LINE

GUARD LINE

GUARD LINE

BUMPER TEMPLATE

WHEEL ARCH

WHEEL ARCH

30

SCALE

30

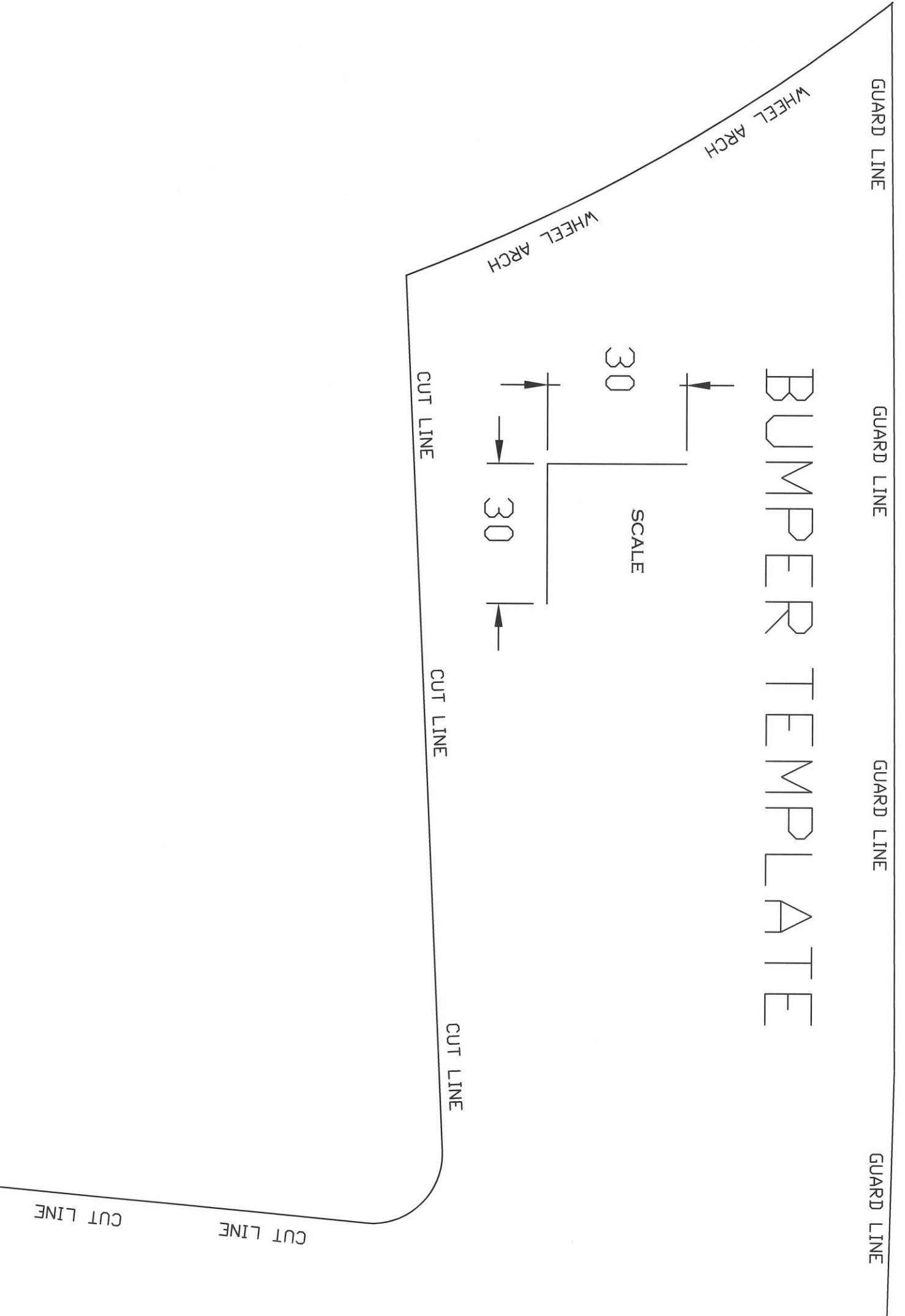
CUT LINE

CUT LINE

CUT LINE

CUT LINE

CUT LINE





**WORLD'S BEST
ALLOY BULLBARS**

East Coast Bullbars (ECB Pty Ltd)

Tel: 07 3897 5700

Fax: 07 3283 1168

ecb@ecb.com.au www.ecb.com.au

29 Snook St
Clontarf QLD 4019
Australia

Po Box 122
Margate QLD 4019
Australia



**WORLD'S BEST
ALLOY BULLBARS**

East Coast Bullbars (ECB Pty Ltd)

Tel: 07 3897 5700

Fax: 07 3283 1168

ecb@ecb.com.au www.ecb.com.au

29 Snook St
Clontarf QLD 4019
Australia

Po Box 122
Margate QLD 4019
Australia

We value your comments

Dear Fitter,

ECB would like to know how you went with the installation of this product. We value your comment and may need to contact you to clarify some details so please complete your contact details clearly.

We would appreciate if you could complete as many of the following details as possible.

Your Name:	Your contact No.
Product Part No.	Product Invoice No.
Product Description:	Make, model, and year of vehicle:
Product Work Order No.	Company your from/Company product purchased from:

Date of Fitment: ____/____/____

Was the fitting hardware supplied complete?

Yes

No

If no what was not supplied

Did the installation go well?

Yes

No

Please provide comments

Please draw diagrams if you need to.

Post to
Reply Paid 122
PO Box 122
Margate QLD 4019

Fax to
(07) 3283 1168



**WORLD'S BEST
ALLOY BULLBARS**

East Coast Bullbars (ECB Pty Ltd)

Tel: 07 3897 5700

Fax: 07 3283 1168

ecb@ecb.com.au www.ecb.com.au

29 Snook St
Clontarf QLD 4019
Australia

Po Box 122
Margate QLD 4019
Australia



WORLD'S BEST
ALLOY BULLBARS

East Coast Bullbars (ECB Pty Ltd)

Tel: 07 3897 5700

Fax: 07 3283 1168

ecb@ecb.com.au www.ecb.com.au

29 Snook St
Clontarf QLD 4019
Australia

Po Box 122
Margate QLD 4019
Australia

DESPATCH CHECKLIST EAIZ73SY

Work Order #		See other side off this page for photos of all mounts
Finish:		
Transport:		
Due Date:		

- OC..... 1 – Steel winch frame
- BK..... 1 – Warn control box mount (WIN_CONT_B4MS) – **IN KIT**
- BK..... 1 – Mean Mother control box mount (MOTHERCB_B4MS) **IN KIT**
- BK..... 1 – Bolt Kit.
- BK..... 1 – LED ECB indicator / park light kit (ICLED105ECB)
- BK..... 1 – Quick Click Indi / Park kit (IC17ISDMHIPDH)
- BK..... 1 – Fog light kit
- BK..... 1 - Quick Click kit (IC10D40S1004ECBH) **REVERSE POLARITY**
- BK..... 4 – Fog light surrounds
- OC..... 2 – ECB Overriders – **Fitted to Bar**
- OC..... 2 – 6mm Air Vents – **Fitted to Bar**

All parts checked and completed by:

Nut and bolts: _____ Date __/__/__

Order control: _____ Date __/__/__

Final wrap check: _____ Date __/__/__



East Coast Bullbars (ECB Pty Ltd)

Tel: 07 3897 5700

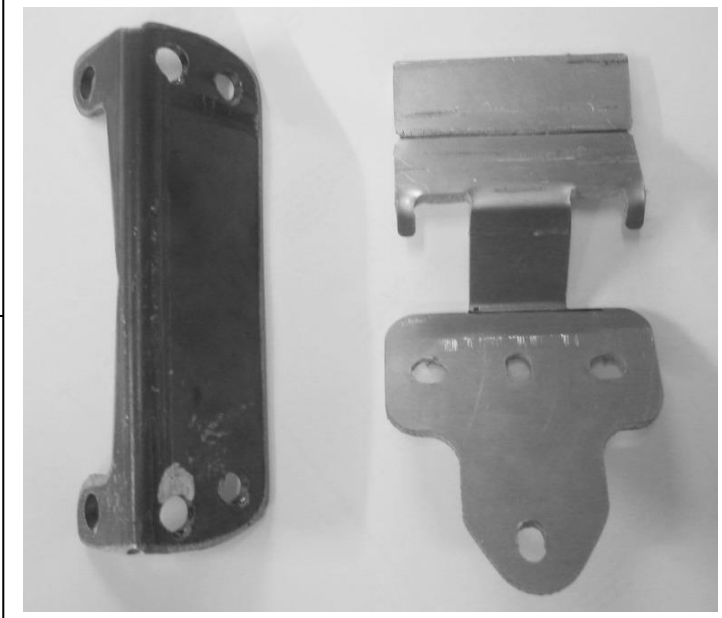
Fax: 07 3283 1168

ecb@ecb.com.au www.ecb.com.au

WORLD'S BEST
ALLOY BULLBARS

29 Snook St
Clontarf QLD 4019
Australia

Po Box 122
Margate QLD 4019
Australia



1 – Warn control box mount
(WIN_CONT_B4MS) – ***IN KIT***

1 – Mean Mother winch control bracket
(MOTHERCB_B4MS) – ***IN KIT***

**BOTH OF THESE SHOULD BE IN
FITTING KIT**