



WORLD'S BEST
ALLOY BULLBARS

East Coast Bullbars (ECB Pty Ltd)

Tel: 07 3897 5700

Fax: 07 3283 1168

ecb@ecb.com.au www.ecb.com.au

29 Snook St
Clontarf QLD 4019
Australia

Po Box 122
Margate QLD 4019
Australia

EAH73SY

REPLACES: 05.02.13
REVISED: 01.05.15

FITTING INSTRUCTIONS

HOLDEN COLORADO RG 12-12 on ARC BAR WITH FOG LIGHTS VEHICLE FRONTAL PROTECTION SYSTEM (VFPS) FOR AIR BAG & ADR COMPLIANT VEHICLES

Check installation hardware before commencing.

Caution: These vehicles are known for running at high temperatures when driven under fully laden conditions (at close to maximum weight of vehicle and trailer combined). **Care needs to be taken when cutting air dams to remove as little as possible around ECB steel mounts.**

1. Lift bonnet
2. Remove two T20 torx head screws from the guard liner per side and unplug fog lights.
3. Remove two 10mm head bolts from the top of the bumper next to the headlights, eight T20 torx head screws from the top of grille, and five 10mm head bolts from under side of bumper. Pull outer edge of bumper outwards to unclip from guard and under headlight each side. Remove front bumper.
4. From under vehicle, remove five 15mm head bolts from front section of under body guard. Remove unbolted section only.
5. Remove front bumper support, four 15mm head bolts from end of chassis.
6. Mark and cut left and right air scoop. **See figures 1 and 2. Caution: leave as much of this air dam in place as possible as cooling system of vehicle when driven under fully laden conditions (at close to maximum weight of vehicle and trailer combined), may be affected.**
7. Mark and cut left & right bumper retainers. **See figure 3.** Drill two pop rivets out of rear of retainer and remove. **Note: Blow filings clear and treat all exposed metal with a rust inhibitor.**
8. Align ECB guard infill (supplied) with side of guard. Fit guard liner into slot at rear of infill. Using the infill as a guide mark and drill two 6 mm holes on outer under edge of front guard. **Note: Blow filings clear and treat all exposed metal with a rust inhibitor.** Install using two M6x20 bolts, washers and nyloc nuts (supplied). Secure liner to infill using speed clips and original screws from the bumper underside. Care must be taken when fitting infill on guard to ensure correct positioning so infill will not rub on protection bar. **See figure 4.**
9. Mark and cut inner guards. **See figures 5 and 6.**
10. Using a die grinder or similar, enlarge front hole in the outside of rail large enough to fit 44mm spacer tube. Slide spacer tube into chassis rail ready for the mount. **Note: Blow filings clear and treat all exposed metal with a rust inhibitor. See figure 7.**
11. Install ECB mounting bracket onto chassis rails using four original equipment bolts in front and two M12 x 75 bolts, flat washers, spring washers and nuts (supplied) inside of chassis rail. Align mounting bracket centrally to vehicle. **Tighten all bolts.**
12. Mark and cut bumper under headlights and across under grille. **See figure 8.**



**WORLD'S BEST
ALLOY BULLBARS**

East Coast Bullbars (ECB Pty Ltd)

Tel: 07 3897 5700

Fax: 07 3283 1168

ecb@ecb.com.au www.ecb.com.au

29 Snook St
Clontarf QLD 4019
Australia

Po Box 122
Margate QLD 4019
Australia

13. Disconnect indicator and parking lights on vehicle. Install ECB quick click wiring harnesses (supplied) between disconnected harness and indicator / park lights on vehicle. Run wiring out from under lights ensuring clearance from sharp edges and moving parts.
14. Connect ECB Quick Click fog light wiring harness (supplied) into original wiring harness.
15. Refit bumper as per reverse of step 2.
16. Fit ECB LED indicator / park lights into protection bar as per instructions supplied with the LED indicator kit. **NOTE: Ensure park light is to outside. See figure 9.**
17. Attach ECB fog lights to protection bar. Use M6 x 20 bolts and washers (supplied) with M6 nuts on wire (supplied). **TIGHTEN FIRM ONLY. See figure 10.**
18. Attach 6mm clip lock trim (supplied) to top of ECB protection bar and winch opening in skirt. **NOTE:** Trim off lower edge on an angle so trim will sit flush with end of protection bar. **See figures 11,12 and 13**
19. Install ECB protection bar onto ECB winch frame using M12 x 40 bolts, flat washers, spring washers and nuts (supplied). For Driver side bottom hole, a nut and washer on wire is provided. **Finger tighten only.**
20. Align ECB protection bar to vehicle. **See figure 14 and 15.** Tighten all bolts.
21. Connect ECB indicator / park lights and fog lights.
22. Check operation of ECB indicator / park lights, ECB fog lights.
23. Fit ECB underbelly guard by placing front into opening behind bumper and openings on side over ECB mounting bracket. Swivel under belly guard into place above vehicle tow points. Fit using original equipment bolts for rear into ECB steel mount and four M6 x 20 bolts, flat washers and nyloc nuts for front edge to ECB protection bar. **Finger tighten only. Note:** Front bolts are accessible through air vents. **See figure 16.**
24. Refit original equipment under body guard.

ENSURE NUMBER PLATE IS CLEARLY VISABLE

Note: When fitting/refitting the licence plate to the vehicle, ensure there is no obstruction to licence plate vision in accordance with local authorities. If required relocate licence plate to an alternate location.

Further VFPS Notes:

- a) Do not attach VFPS to the vehicle using anchorages not intended for this purpose (e.g. engine mounting bolts).
- b) Do not use this product for any vehicle make or model, other than those specified by the VFPS manufacturer.
- c) Do not remove the plaque or label from the VFPS.
- d) Do not modify the structure of the VFPS in any way.
- e) No accessory or fitment should project forward of the VFPS forward profile.
- f) **ENSURE THESE INSTRUCTIONS ARE LEFT WITH VEHICLE OWNER AND/OR OPERATOR.**

IMPORTANT INFORMATION

Periodically check bolts and nuts for correct tightness, especially if travelling on rough roads

FITTING KIT

1 – ECB mounting bracket	16 – M6 flat washer
1 – Pair alloy guard infills – <i>In kit</i>	8 – M6 nyloc nuts
1 – ECB alloy under body guard	2 – M6 spring washers
2 – 15nb x 44mm tube chassis spacers	2 – M6 nuts
2 – M12 x 1.75 x 75 bolts	1 – ECB LED Indicator / Park light kit
8 – M12 x 1.75 x 40 bolts	1 – Quick click Indi / Park harness (IC12COLECB100H)
20 – M12 flat washers	1 – ECB fog light kit
10 – M12 spring washers	1 – Quick Click fog wiring kit (IC12COL1004ECBH)
10 – M12 x 1.75 nuts	2 – Fog light surrounds
10 – M6 x 20 bolts	1 – 2350 length 6mm clip lock trim

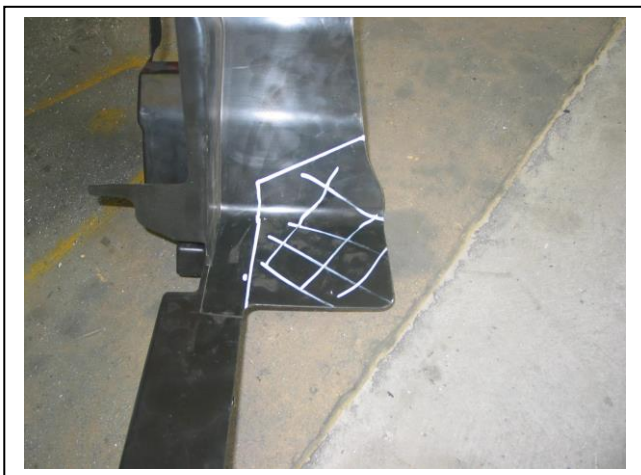


Figure 1: Trim area on passengers side of vehicle. Drivers side is an identical cut.



Figure 2: Trimmed area as seen behind mount. **Caution:** trim as little as possible.



Figure 3: Trim lower bumper keeper to front corner of guard



Figure 4: Correct fitment of infill to guard on passenger side .



Figure 5: Driver side inner guard trim line.



Figure 6: Passengers side inner guard trim line.

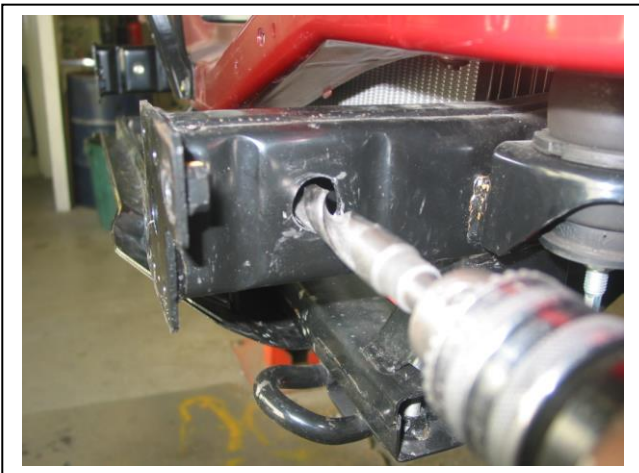


Figure 7: Enlarge front hole in outside of chassis rail.

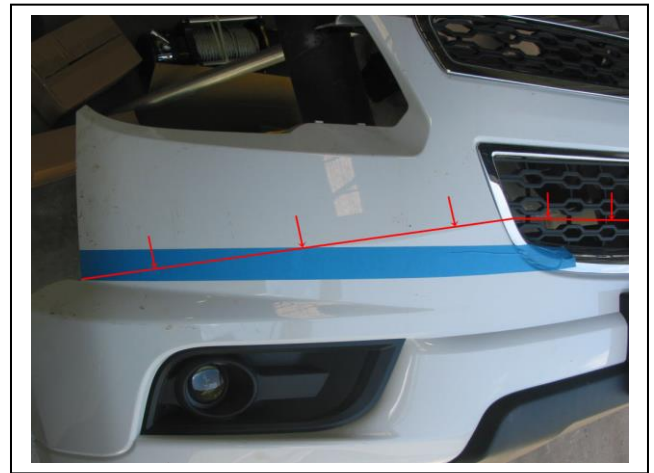
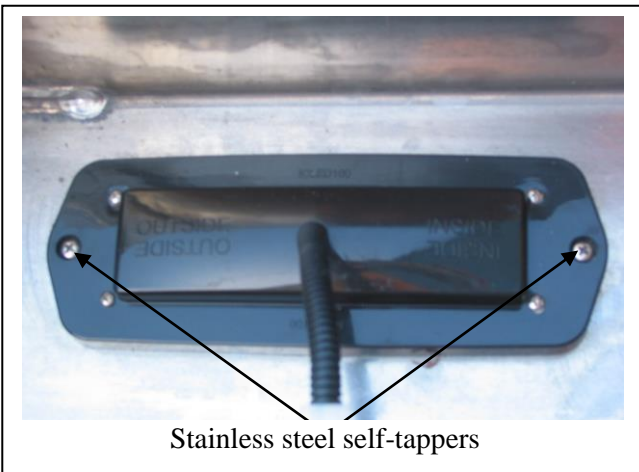
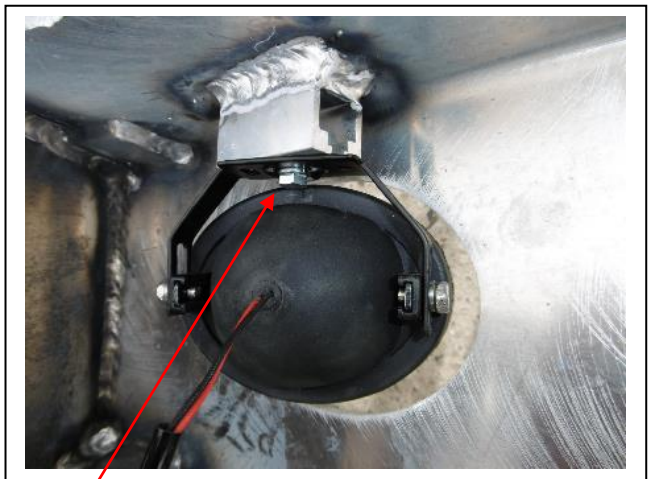


Figure 8: Bumper cut line. Note: cut across grille for maximum air flow



Stainless steel self-tappers

Figure 9



M6 bolt

Figure 10



East Coast Bullbars (ECB Pty Ltd)

Tel: 07 3897 5700

Fax: 07 3283 1168

ecb@ecb.com.au www.ecb.com.au

29 Snook St
Clontarf QLD 4019
Australia

Po Box 122
Margate QLD 4019
Australia

WORLD'S BEST
ALLOY BULLBARS

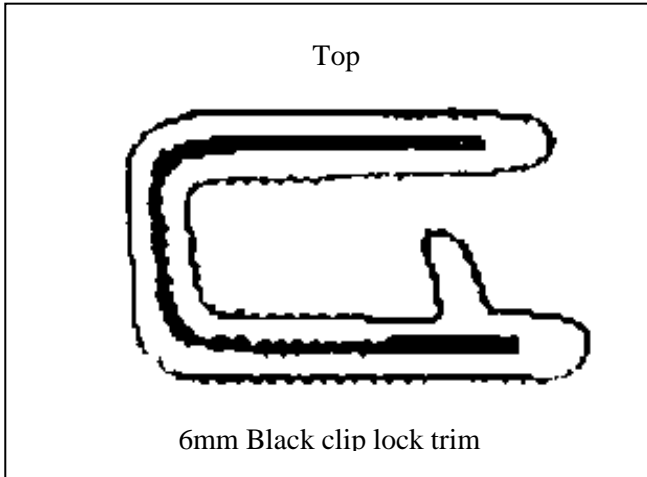


Figure 11

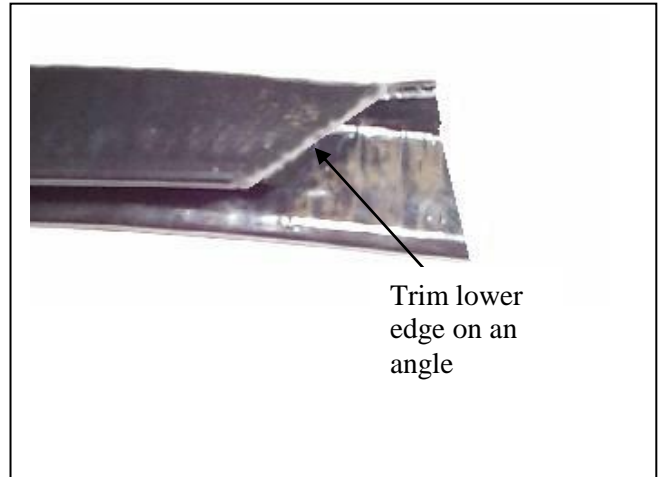


Figure 12

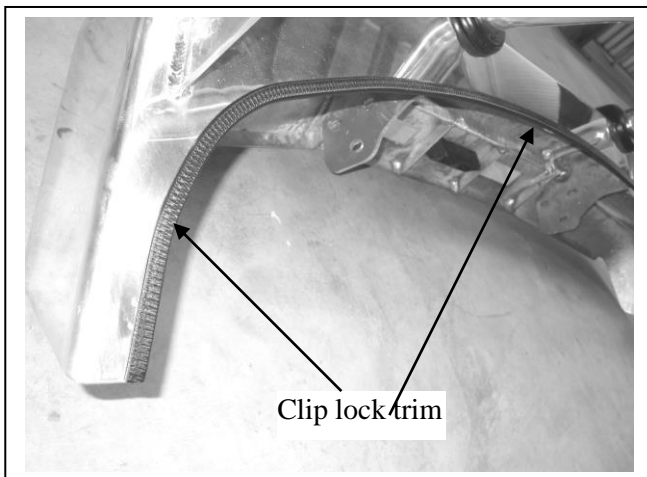


Figure 13



Figure 14



Figure 15



Figure 16



**WORLD'S BEST
ALLOY BULLBARS**

East Coast Bullbars (ECB Pty Ltd)

Tel: 07 3897 5700

Fax: 07 3283 1168

ecb@ecb.com.au www.ecb.com.au

29 Snook St
Clontarf QLD 4019
Australia

Po Box 122
Margate QLD 4019
Australia

We value your comments

Dear Fitter,

ECB would like to know how you went with the installation of this product. We value your comment and may need to contact you to clarify some details so please complete your contact details clearly.

We would appreciate if you could complete as many of the following details as possible.

Your Name:	Your contact No.
Product Part No.	Product Invoice No.
Product Description:	Make, model, and year of vehicle:
Product Work Order No.	Company your from/Company product purchased from:

Date of Fitment: ____/____/____

Was the fitting hardware supplied complete? Yes No

If no what was not supplied

Did the installation go well? Yes No

Please provide comments

Please draw diagrams if you need to.

Post to
Reply Paid 122
PO Box 122
Margate QLD 4019

Fax to
(07) 3283 1168



East Coast Bullbars (ECB Pty Ltd)

Tel: 07 3897 5700

Fax: 07 3283 1168

ecb@ecb.com.au www.ecb.com.au

29 Snook St
Clontarf QLD 4019
Australia

Po Box 122
Margate QLD 4019
Australia

WORLD'S BEST
ALLOY BULLBARS

DESPATCH CHECKLIST EAH73SY

Work Order #		See other side of this page for photos of all mounts
Finish:		
Transport:		
Due Date:		

NOTE: This bar must have a 7 cut into it at bottom of centre tube – overrides will cover this when fitted

- OC.....1 – Steel mounting brackets.
- BK.....2 – Alloy guard infills (P/C black)
- OC.....1 – Alloy underbody guard (EAH68SY_U3AL)
- BK.....1 – Bolt Kit.
- BK.....1 – LED ECB indicator / park light kit.
- BK.....1 – Quick Click indi / park kit (IC12COLECB100H)
- BK.....1 – Fog light kit
- BK.....1 – Quick Click fog wiring kit (IC12COL1004ECBH)
- BK.....4 – fog light surrounds
- BK.....1 – 2350 mm length 6mm clip lock
- OC.....2 – ECB Overrides – **Fitted to Bar**
- OC.....4 – 6mm Air Vents **trimmed** – **Fitted to Bar**
- OC.....4 – 6mm Air Vents – **Fitted to Bar**



Is this product “the best it can be” Yes _____/_____
Wrapper's initials / Checker initials

If **NO** fix before continuing

All parts checked and completed by:

Nut and bolts: _____ Date __/__/__

Order control: _____ Date __/__/__

Final wrap check: _____ Date __/__/__



East Coast Bullbars (ECB Pty Ltd)

Tel: 07 3897 5700

Fax: 07 3283 1168

ecb@ecb.com.au www.ecb.com.au

29 Snook St
Clontarf QLD 4019
Australia

Po Box 122
Margate QLD 4019
Australia

WORLD'S BEST
ALLOY BULLBARS

