



WORLD'S BEST
ALLOY BULLBARS

East Coast Bullbars (ECB Pty Ltd)

Tel: 07 3897 5700

Fax: 07 3283 1168

ecb@ecb.com.au www.ecb.com.au

29 Snook St
Clontarf QLD 4019
Australia

Po Box 122
Margate QLD 4019
Australia

EAH63SY

REPLACES: 23.07.10
REVISED: 07.07.11

FITTING INSTRUCTIONS

HOLDEN COLORADO 7/08 ON ECB ARC™ WINCH COMPATIBLE (UP TO WARN XP9.5) PROTECTION BAR WITH FOG LIGHTS VEHICLE FRONTAL PROTECTION SYSTEM (VFPS) FOR AIR BAG AND ADR COMPLIANT VEHICLES

Check installation hardware before commencing.

1. To release inner guards, remove one 10mm head screw and one push pull plastic clip (per side) from lower corners of plastic bumper cover. Pull inner guards rearward away from bumper to allow for bumper cut.
2. Remove two 10mm head bolts and three 10mm nuts (per side) from rear of lower flare extension. Remove lower flare extension.
3. Using **Figure 1** as a guide. Mask bumper for cut along top of crease in plastic bumper at sides, up around top of fog light opening and top of grille.
4. Using a jigsaw carefully cut away lower half of bumper cover. Remove masking. **NOTE:** What you leave after cut is the finished edge.
5. Remove cross member from front of chassis. Four 14mm head bolts. **See figure 2.** Remove bumper lower stays, one 10mm head bolt (per side).
6. Loosen rear bolts and remove front 14mm head bolts on chassis protection plate. Allow plate to hang.
7. Attach ECB steel mounting brackets (supplied) to front of chassis. Use four M10 x 40 x 1.25 bolts/washers (supplied). **See figure 3. FINGER TIGHTEN ONLY. Note:** On some vehicles, horn may need to be relocated on passengers side of vehicle to allow fitment.
8. Centre and level steel mounting brackets on vehicle. Ensure sufficient distance apart for protection bar to mount on outside of steel mounting brackets. **Check protection bar measurement.** Use M10 x 35 x 1.25 bolts/washers (supplied) in lower mount holes. **TIGHTEN** steel mounting brackets in position. **See figure 4. NOTE:** Two extra 3/8 flat washers are supplied for spacers between lower welded bracket on steel mount and chassis if required.
9. Place winch frame (supplied) to top of plates on steel mounting brackets. Fit using six 7/16 x 1 ½ bolts, flat washers, spring washers and nuts (supplied). Centralise to mounts and **TIGHTEN ALL BOLTS. See figure 5.**
10. Install roller fairlead to front of winch frame using original 7/16 x 1 bolts, flat washers, spring washers and nuts. Place head of bolt to winch side of winch frame.
11. With two 3/8 x 1 bolts, flat washers, spring washers and nuts (supplied), fit control box bracket (supplied) to driver's side front of winch frame. Place control box bracket to winch side of front face. Feed bolt from winch side of winch frame. **See figure 6.**
12. Install winch into winch frame feeding winch cable into roller fairlead while you go, as per manufacturer's instructions. Use original 3/8 x 1 ¼ bolts, spring washers and 3/8 flat washers (supplied).



**WORLD'S BEST
ALLOY BULLBARS**

East Coast Bullbars (ECB Pty Ltd)

Tel: 07 3897 5700

Fax: 07 3283 1168

ecb@ecb.com.au www.ecb.com.au

29 Snook St
Clontarf QLD 4019
Australia

Po Box 122
Margate QLD 4019
Australia

13. Wire winch to vehicle as per manufacturer's instructions. Ensure wiring does not contact hot or sharp surfaces. Do not tighten winch control box to vehicle at this point.
14. Trim inner guard level with the steel radiator support on the vehicle. Using a hacksaw or similar, remove outer bumper stay level with inner guard. **See figure 7** for approximate trim line.
15. Splice ECB indicator/park light wiring into original wiring loome behind headlights. Use cable locks (supplied).
16. Splice ECB fog light wiring into original wiring loome. Use cable locks (supplied).
17. Attach 6mm clip lock trim (supplied) to top of ECB protection bar. **NOTE:** Trim off lower edge so trim will sit to end of protection bar. **See figures 8, 9 & 10** Attach 6mm clip lock trim (supplied) to each side of roller fairlead cut out in skirt. **NOTE:** Seal any exposed edges of trim with silicone or similar to avoid corrosion of inner steel
18. Fit ECB LED indicator / park lights (supplied) into protection bar as per instructions supplied with the LED indicator kit. **NOTE: Ensure park light is to outside. See figure 13.**
19. Attach ECB fog lights to protection bar. Place M6 x 20 bolts, spring washers (supplied) through light mount from inside and attach nut to top. Slide assembly into light mount in Protection bar and centralize light to hole. **TIGHTEN FIRM ONLY.** Place fog light trims into opening with large side of trim to inside of protection bar. **See figure 12.**
20. Remove winch control box from control box mount and pull to centre of vehicle to allow access to Protection Bar bolts. Attach protection bar to outside of steel mounting brackets using three ½ x 1 ½ bolts flat and spring washers and nuts (each side) (supplied). **FINGER TIGHTEN ONLY.**
21. Align protection bar with approximately 12mm clearance from bumper. **See figures 13 and 14. TIGHTEN ALL BOLTS.**
22. Refit winch control box to control box mount. Place fog light trims into top holes in channel with larger side of trim to front of bumper.
23. Connect ECB indicator/park lights and fog lights. Secure to original wiring with zip ties (supplied). Ensure wiring is routed in such a manner to avoid any sharp edges etc. **CHECK OPERATION.**
24. Check winch for correct operation.

ENSURE NUMBER PLATE IS CLEARLY VISABLE

Note: When fitting/refitting the licence plate to the vehicle, ensure there is no obstruction to licence plate vision in accordance with local authorities. If required relocate licence plate to an alternate location.

Further VFPS Notes:

- a) Do not attach VFPS to the vehicle using anchorages not intended for this purpose (e.g. engine mounting bolts).
- b) Do not use this product for any vehicle make or model, other than those specified by the VFPS manufacturer.
- c) Do not remove the plaque or label from the VFPS.
- d) Do not modify the structure of the VFPS in any way.
- e) No accessory or fitment should project forward of the VFPS forward profile.
- f) **ENSURE THESE INSTRUCTIONS ARE LEFT WITH VEHICLE OWNER AND/OR OPERATOR.**



East Coast Bullbars (ECB Pty Ltd)

Tel: 07 3897 5700

Fax: 07 3283 1168

ecb@ecb.com.au www.ecb.com.au

WORLD'S BEST
ALLOY BULLBARS

29 Snook St
Clontarf QLD 4019
Australia

Po Box 122
Margate QLD 4019
Australia

IMPORTANT INFORMATION

Periodically check bolts and nuts for correct tightness, especially if travelling on rough roads.

FITTING KIT

1 – Pair steel mounting brackets.	2 – 3/8 x 1 bolts
1 – Steel winch plate	8 – 3/8 flat washers
1 – Steel winch control box mount	2 – 3/8 spring washers
4 – M10 x 40 x 1.25 bolts.	2 – 3/8 nuts
2 – M10 x 35 x 1.25 bolts.	2 – M6 x 20 bolts
6 – M10 flat washers.	2 – M6 flat washers
6 – M10 spring washers.	2 – M6 spring washers
6 – 1/2 x 1 1/2 bolts	2 – M6 nuts
12 – 1/2 flat washers	1 – ECB LED Indicator / Park light kit
6 – 1/2 spring washers.	1 – ECB fog light kit
6 – 1/2 nuts	4 – ECB fog light trims
2 – 7/16 x 1 bolts	1 – 2300mm length 6mm clip lock trim.
6 – 7/16 x 1 1/2 bolts	2 – 220mm length 6mm clip lock trim
18 – 7/16 flat washers	6 – Cable locks.
8 – 7/16 spring washers	4 – 150mm zip ties.
8 – 7/16 nuts	



Figure 1 Trim across join and around grille assembly.

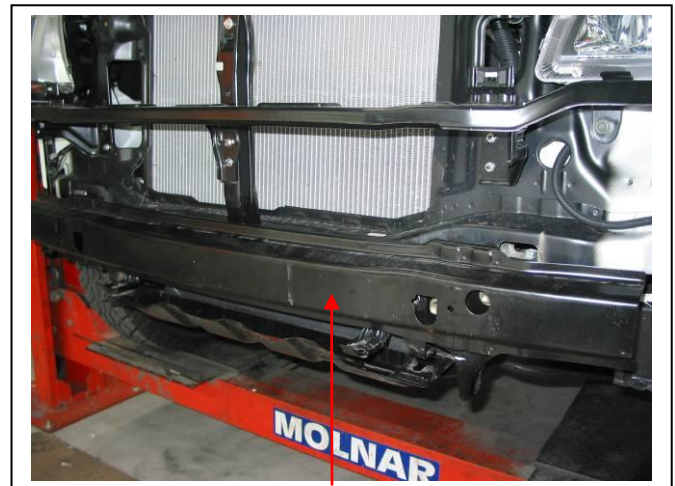


Figure 2: Cross member



East Coast Bullbars (ECB Pty Ltd)

Tel: 07 3897 5700

Fax: 07 3283 1168

ecb@ecb.com.au www.ecb.com.au

WORLD'S BEST
ALLOY BULLBARS

29 Snook St
Clontarf QLD 4019
Australia

Po Box 122
Margate QLD 4019
Australia



Figure 3 – Passengers side shown

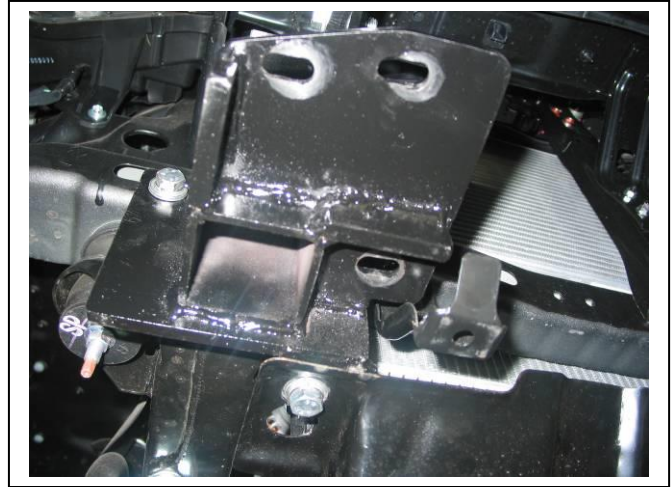


Figure 4 – lower bolt through under body guard



Figure 5: Winch mount fitted



Figure 6: Control box mount fitted behind front face of winch frame

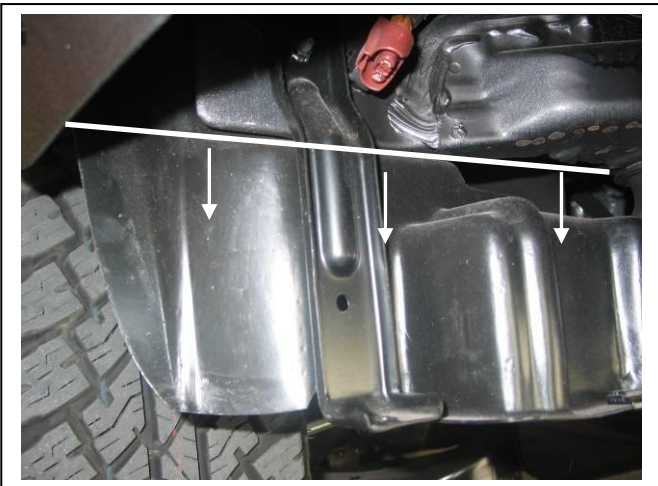


Figure 7: Cut under steel radiator support



Figure 8



East Coast Bullbars (ECB Pty Ltd)

Tel: 07 3897 5700

Fax: 07 3283 1168

ecb@ecb.com.au www.ecb.com.au

WORLD'S BEST
ALLOY BULLBARS

29 Snook St
Clontarf QLD 4019
Australia

Po Box 122
Margate QLD 4019
Australia

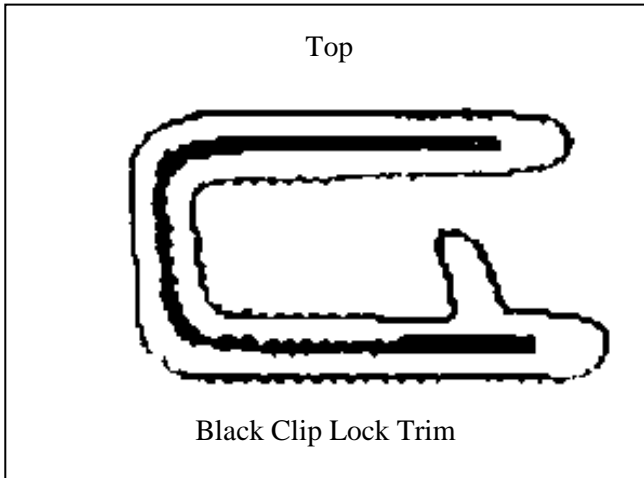
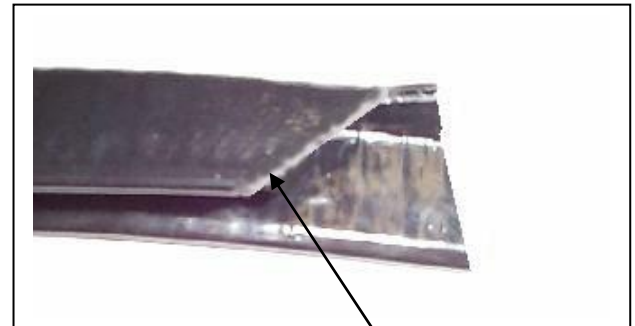


Figure 9



Trim lower edge on
an angle

Figure 10

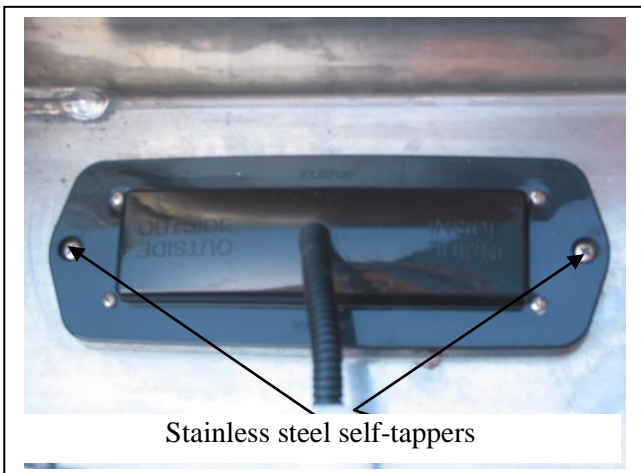
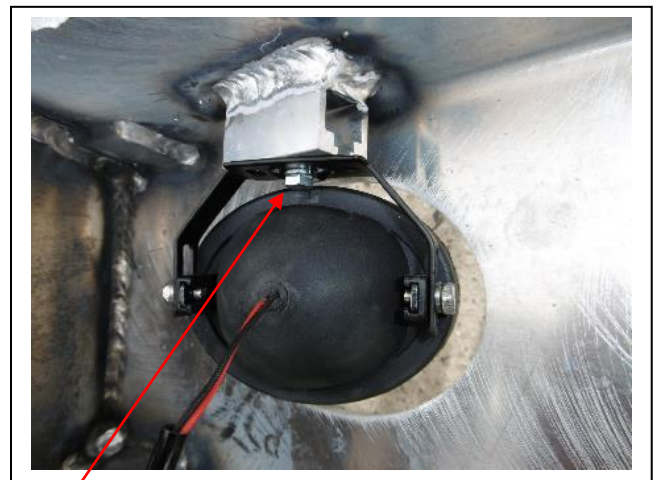


Figure 11



M6 bolt

Figure 12



Figure 13: Front view shown



Figure 14: Side view shown



**WORLD'S BEST
ALLOY BULLBARS**

East Coast Bullbars (ECB Pty Ltd)

Tel: 07 3897 5700

Fax: 07 3283 1168

ecb@ecb.com.au www.ecb.com.au

29 Snook St
Clontarf QLD 4019
Australia

Po Box 122
Margate QLD 4019
Australia

We value your comments

Dear Fitter,

ECB would like to know how you went with the installation of this product. We value your comment and may need to contact you to clarify some details so please complete your contact details clearly.

We would appreciate if you could complete as many of the following details as possible.

Your Name:	Your contact No.
Product Part No.	Product Invoice No.
Product Description:	Make, model, and year of vehicle:
Product Work Order No.	Company your from/Company product purchased from:

Date of Fitment: ____/____/____

Was the fitting hardware supplied complete?

Yes

No

If no what was not supplied

Did the installation go well?

Yes

No

Please provide comments

Please draw diagrams if you need to.

Post to
Reply Paid 122
PO Box 122
Margate QLD 4019

Fax to
(07) 3283 1168



WORLD'S BEST ALLOY BULLBARS

East Coast Bullbars (ECB Pty Ltd)

Tel: 07 3897 5700

Fax: 07 3283 1168

ecb@ecb.com.au www.ecb.com.au

29 Snook St
Clontarf QLD 4019
Australia

Po Box 122
Margate QLD 4019
Australia

DESPATCH CHECKLIST EAH63SY

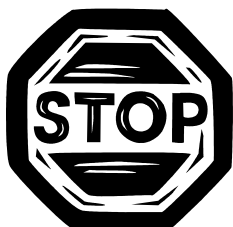
ICZBKCH63



Work Order #	
Finish:	
Transport:	
Due Date:	

- 1 – Pair steel mounting brackets. **Caution: Front mount plates are sided**
- 1 – Steel winch frame
- 1 – Steel control box mount
- 1 – Bolt Kit
- 1 – ECB LED Indicator / Park light kit.
- 1 – ECB Fog light kit
- 4 – Fog light trims
- 1 – 2300mm length 6mm clip lock trim
- 2 – 220mm lengths 6mm clip lock trim
- 2 – ECB Overrides – **Fitted to Bar**
- 4 – 6mm Air Scoops – **Fitted to Bar**

See other side of this page for photos of all mounts



Is this product “the best it can be” Yes _____ / _____
Wrapper's initials / Checker initials

If NO fix before continuing

All parts checked and completed by:

Nut and bolts: _____ Date ___/___/___

Order control: _____ Date ___/___/___

Final wrap check: _____ Date ___/___/___



East Coast Bullbars (ECB Pty Ltd)

Tel: 07 3897 5700

Fax: 07 3283 1168

ecb@ecb.com.au www.ecb.com.au

WORLD'S BEST
ALLOY BULLBARS

29 Snook St
Clontarf QLD 4019
Australia

Po Box 122
Margate QLD 4019
Australia

