



**WORLD'S BEST
ALLOY BULLBARS**

East Coast Bullbars (ECB Pty Ltd)

Tel: 07 3897 5700

Fax: 07 3283 1168

ecb@ecb.com.au www.ecb.com.au

29 Snook St
Clontarf QLD 4019
Australia

Po Box 122
Margate QLD 4019
Australia

EAFT02SY

REPLACES: 00.00.00

REVISED: 09.03.15

FITTING INSTRUCTIONS

FOTON TUNLAND 03/14- ARC BAR VEHICLE FRONTAL PROTECTION SYSTEM (VFPS) FOR AIR BAG & ADR COMPLIANT VEHICLES

Check installation hardware before commencing.

1. Lift bonnet.
2. Remove the plastic air guides located behind the grill each side of the radiator. **See figure 1** these will be reinstalled.
3. Remove all clips, screws and wiring connectors to allow the front bumper to be removed. Retain clips and screws. Leave the plastic inner wheel arch guards in place.
4. Remove cross member from front of chassis rails by releasing the nuts each side. **See figure 2.** Give back to vehicle owner.
5. Remove the lower plastic underbody splashguards from each side and discard. **See figure 3.**
6. Remove the OE sump guard and trim the outer sections off. Locate the centre line of the sump guard front edge and mark 290mm each side (580mm overall) Mark a line along the fold line parallel with the front edge and remove sections each side. **See figure 4.** Reattach sump guard using the original fasteners in the rear holes only. **NOTE: All drilled holes and any exposed metal must be treated with a rust inhibitor or similar**
7. Attach the ECB Steel mounting bracket (supplied) to captive studs on the front of the chassis rails. Use M10 x 1.5 nuts, flat washers and spring washers (supplied) **FINGER TIGHTEN ONLY.** **See figure 5.**
8. Located the foam barrier directly below each side of the radiator. Gently push the foam barrier rearward to expose a hole through the lower radiator support rail on each side of the vehicle. Secure ECB steel mounting bracket using M10 x 60 x 1.5 bolts, flat and spring washers (supplied) **FINGER TIGHTEN ONLY.** **See figure 6.** Align steel mounting brackets to be central to the vehicle and set at 655mm maximum outside. **TIGHTEN ALL BOLTS.**
9. Release the fasteners retaining the headlight assemblies in place. Unplug the OE headlight and indicator wiring connector from the rear of the headlight assembly. Attach indicator / park light wiring harness (supplied) using cable locks (supplied). **NOTE:** use the black wiring on the vehicle indicator harness as the common earth. Plug the OE connector back in place and refit the headlight assemblies **See figure 7.**
10. Remove flare section from the bumper. Place template (supplied) on to the bumper and flare sections, carefully mark cut line. If unsure that cut line is correct leave some extra material and trim off later. **NOTE:** the bumper may need to be removed from the vehicle to assist with cutting. **See figure 8.**
11. Test fit the protection bar to the vehicle to ensure correct fitment. Lightly fasten in place using only four M12 x 40 x 1.75 bolts, nuts, flat and springs washers (supplied). Once protection bar alignment is correct mark a straight line on to each inner splash guard from the corner of the lower most rear edge of the wing return on the lower face of the chassis rail. Trim the upper section of the inner guard to sit neatly. **See figure 9.**



**WORLD'S BEST
ALLOY BULLBARS**

East Coast Bullbars (ECB Pty Ltd)

Tel: 07 3897 5700

Fax: 07 3283 1168

ecb@ecb.com.au www.ecb.com.au

29 Snook St
Clontarf QLD 4019
Australia

Po Box 122
Margate QLD 4019
Australia

12. Align the inner splash guard support with a captive nut on the side of the chassis behind the front body mount, fasten using one M8 x 25 x 1.25 bolt and flat washer (supplied) through the splash guard support, place the nut between the splash guard support and the chassis as a spacer and **TIGHTEN**. Using the splash guard support as a guide drill a M6 hole through the inner splash guard and fasten using M6 x 20 x 1 bolt, flat washer and wiz nut (supplied). **See figure 10.**
13. Test fit the protection bar to vehicle to ensure correct fitment. The gap between the top of protection bar to bumper section needs to be approximately 10mm. Once satisfied with alignment and bumper trim, remove protection bar. Refit the trimmed flare section to the bumper using the original push clips. Attach clip lock trim (supplied) on cut bumper edge and flare section. Trim to length. **See figure 11.**
14. Fit ECB LED indicator / park lights into protection bar as per instructions supplied with the LED indicator kit. **NOTE:** Ensure park light is to outside. **See figure 12**
15. Attach 6mm clip lock trim (supplied) to top centre section of protection bar.
16. Fit the protection bar on to the steel mounting brackets using M12 x 40 x 1.75 bolts, flat and spring washers (supplied). Align with vehicle and **TIGHTEN ALL BOLTS**. **See figures 14, 15 and 16.**
17. Align the rear holes in the underbody splash guard (supplied) with the OE sump guard rear bolt holes and fasten with M8 x 25 x 1.25 bolts, flat and spring washers (supplied). Align the front holes in the underbody splash guard with the holes on the lower edge of the protection bar centre skirt. Access this through the lower vent slots. Fasten using M5 x 20 x 30 bolts, nuts, flat and spring washers (supplied). Insert 3 plastic air vents (supplied) into lower vent slots. **See figure 17.**

Note: When fitting/refitting the licence plate to the vehicle, ensure there is no obstruction to licence plate vision in accordance with local authorities. If required relocate licence plate to an alternate location.

Further VFPS Notes:

- a) Do not attach VFPS to the vehicle using anchorages not intended for this purpose (e.g. engine mounting bolts).
- b) Do not use this product for any vehicle make or model, other than those specified by the VFPS manufacturer.
- c) Do not remove the plaque or label from the VFPS.
- d) Do not modify the structure of the VFPS in any way.
- e) No accessory or fitment should project forward of the VFPS forward profile.
- f) **ENSURE THESE INSTRUCTIONS ARE LEFT WITH VEHICLE OWNER AND/OR OPERATOR.**

IMPORTANT INFORMATION

Periodically check bolts and nuts for correct tightness, especially if travelling on rough roads



**WORLD'S BEST
ALLOY BULLBARS**

East Coast Bullbars (ECB Pty Ltd)

Tel: 07 3897 5700

Fax: 07 3283 1168

ecb@ecb.com.au www.ecb.com.au

29 Snook St
Clontarf QLD 4019
Australia

Po Box 122
Margate QLD 4019
Australia

FITTING KIT

1 – Pair steel mounting brackets	1 – M8 x 1.25 nut
1 – Underbody splash guard	1 – M6 x 20 bolt
1 – Inner splash guard support bracket (In Kit)	1 – M6 flange nut
8 – M12 x 40 x 1.75 bolts	2 - M6 large flat washers
8 – M12 x 1.75 nuts	3 – M5 x 30 bolts
8 – M12 spring washers	3 – M5 nuts
16 – M12 flat washers	3 – M5spring washers
2 – M10 x 1.5 x 60 bolts	6 – M5 Flat washers
6 – M10 x 1.5 nuts	1 – ECB Indicator / Park light kit
6 – M10 spring washers	6 – Cable locks
12 – M10 flat washers	2 – 780mm lengths 3mm clip lock
3 – M8 x 25 x 1.25 bolts	2 – 140mm lengths 3mm clip lock
3 – M8 flat washers	1 – 1250mm lengths 6mm clip lock
3 – M8 spring washers	3 – 6mm air scoops (In Kit)



**WORLD'S BEST
ALLOY BULLBARS**

East Coast Bullbars (ECB Pty Ltd)

Tel: 07 3897 5700

Fax: 07 3283 1168

ecb@ecb.com.au www.ecb.com.au

29 Snook St
Clontarf QLD 4019
Australia

Po Box 122
Margate QLD 4019
Australia



Figure 1

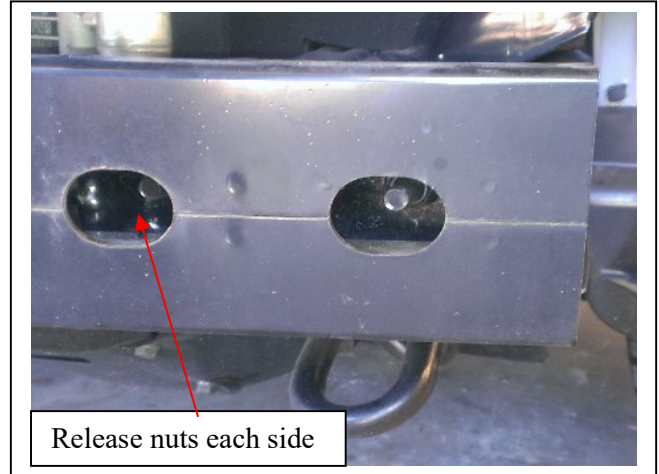


Figure 2

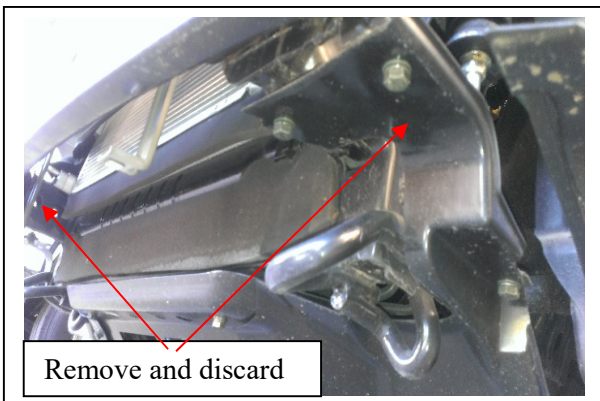


Figure 3



Figure 4



Figure 5

M10 x 1.5 x 60 bolts,
nuts and washers

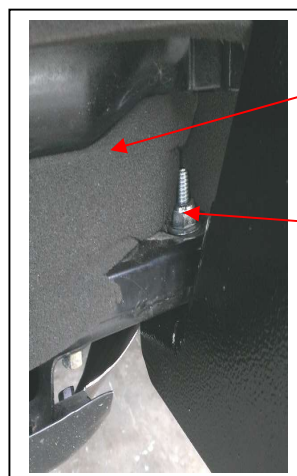


Figure 6

Foam Barrier

M10 x 1.5 x 60 bolt,
nut and washer



East Coast Bullbars (ECB Pty Ltd)

Tel: 07 3897 5700

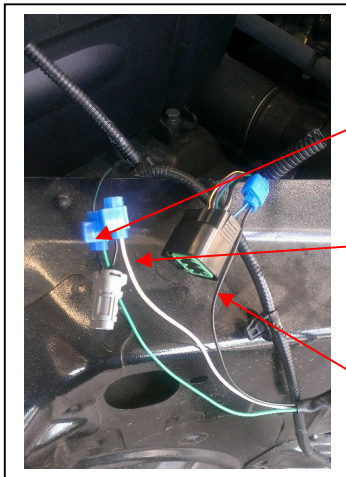
Fax: 07 3283 1168

ecb@ecb.com.au www.ecb.com.au

WORLD'S BEST ALLOY BULLBARS

29 Snook St
Clontarf QLD 4019
Australia

Po Box 122
Margate QLD 4019
Australia



Vehicle indicator light wire, green to harness wire

Vehicle indicator Earth wire, Black to harness wire White

Vehicle Park light wire, Blue to harness wire Black

Figure 7



Figure 8

Inside the wing return of the bumper

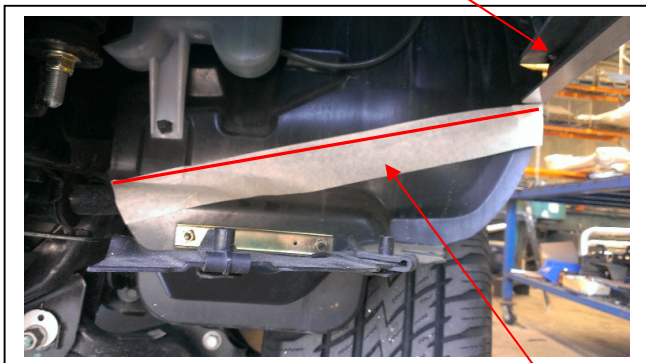


Figure 9 Cut off the lower section and discard

M6 bolt, washer and flange nut



Figure 10 M8 x 1.25 x 25 bolt, flat and spring washer into captive nut

Attach Clip Lock trim

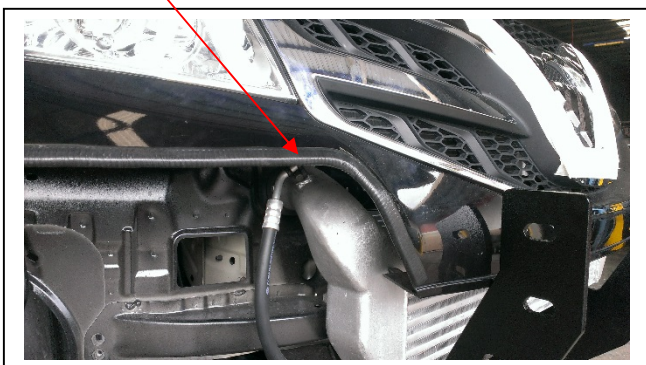
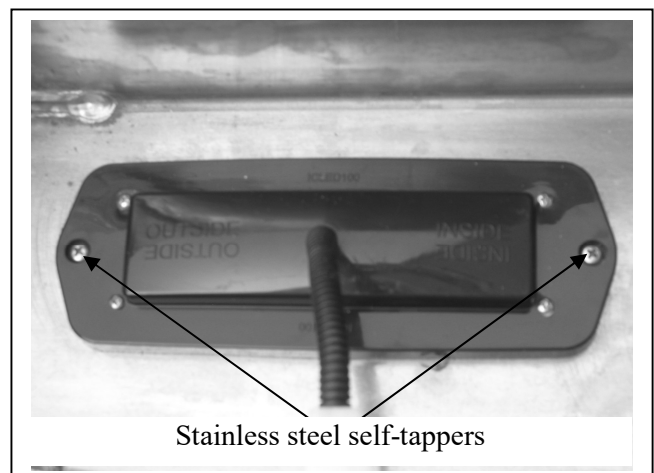


Figure 11



Stainless steel self-tappers

Figure 12



**WORLD'S BEST
ALLOY BULLBARS**

East Coast Bullbars (ECB Pty Ltd)

Tel: 07 3897 5700

Fax: 07 3283 1168

ecb@ecb.com.au www.ecb.com.au

29 Snook St
Clontarf QLD 4019
Australia

Po Box 122
Margate QLD 4019
Australia

M12 x 40 x 1.75 bolts, washers and nuts

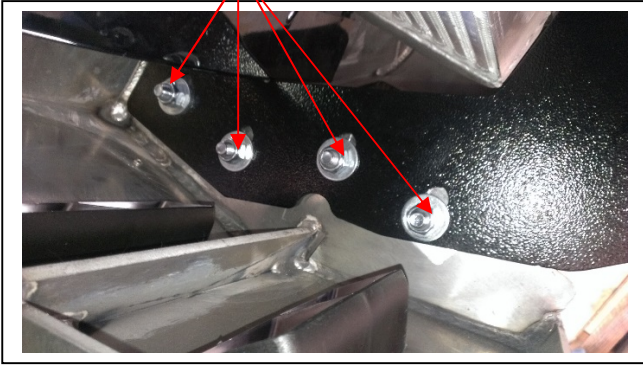


Figure 13



Figure 14 – Front view shown



Figure 14 – Side view shown



Figure 15

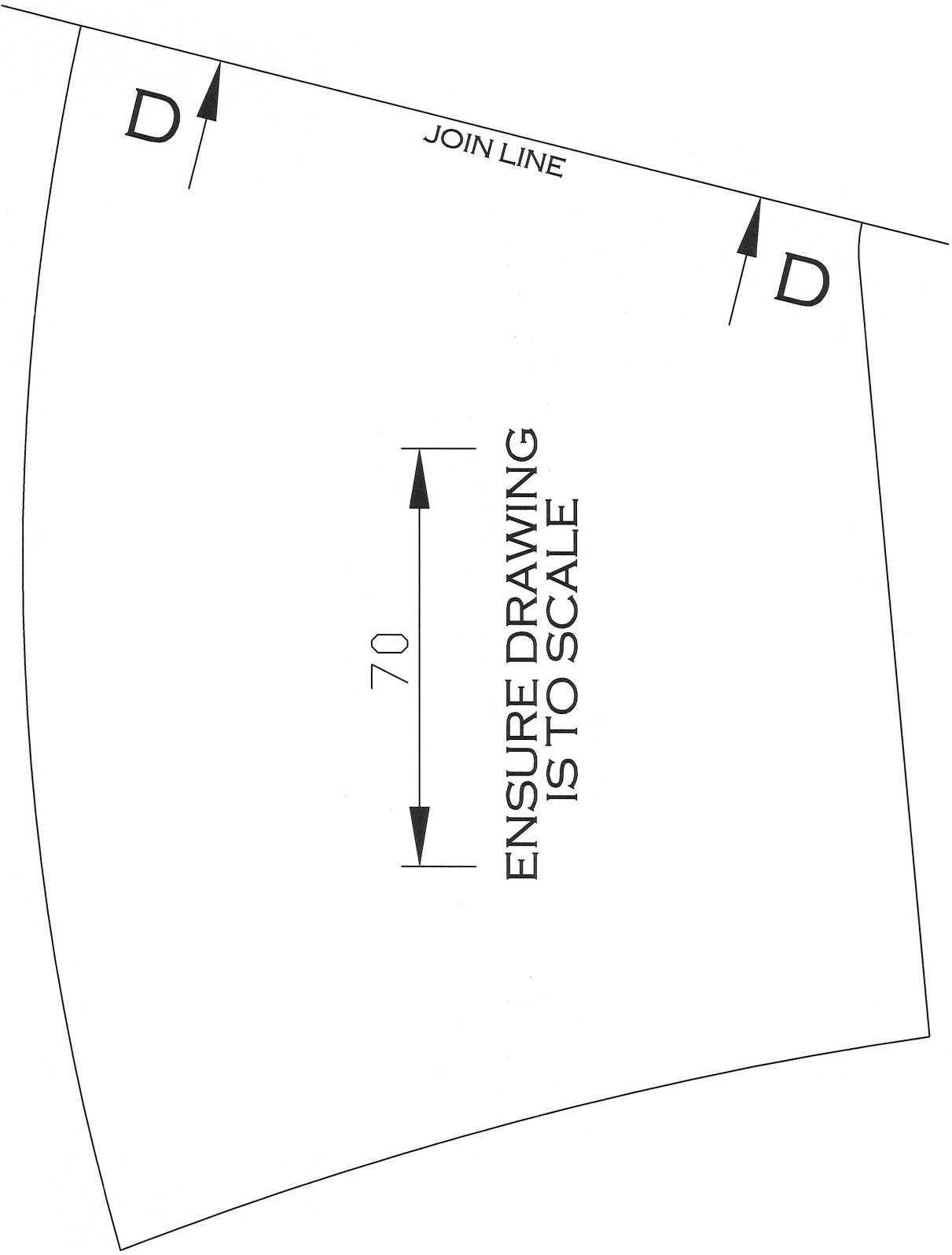
WHEEL ARCH

FLARE JOIN TO GUARD

DRIVERS SIDE WHEEL ARCH
FLARE TEMPLATE

CAUTION: TRIM CAREFULLY
AS THIS IS THE FINISH TRIM LINE

CUT LINE



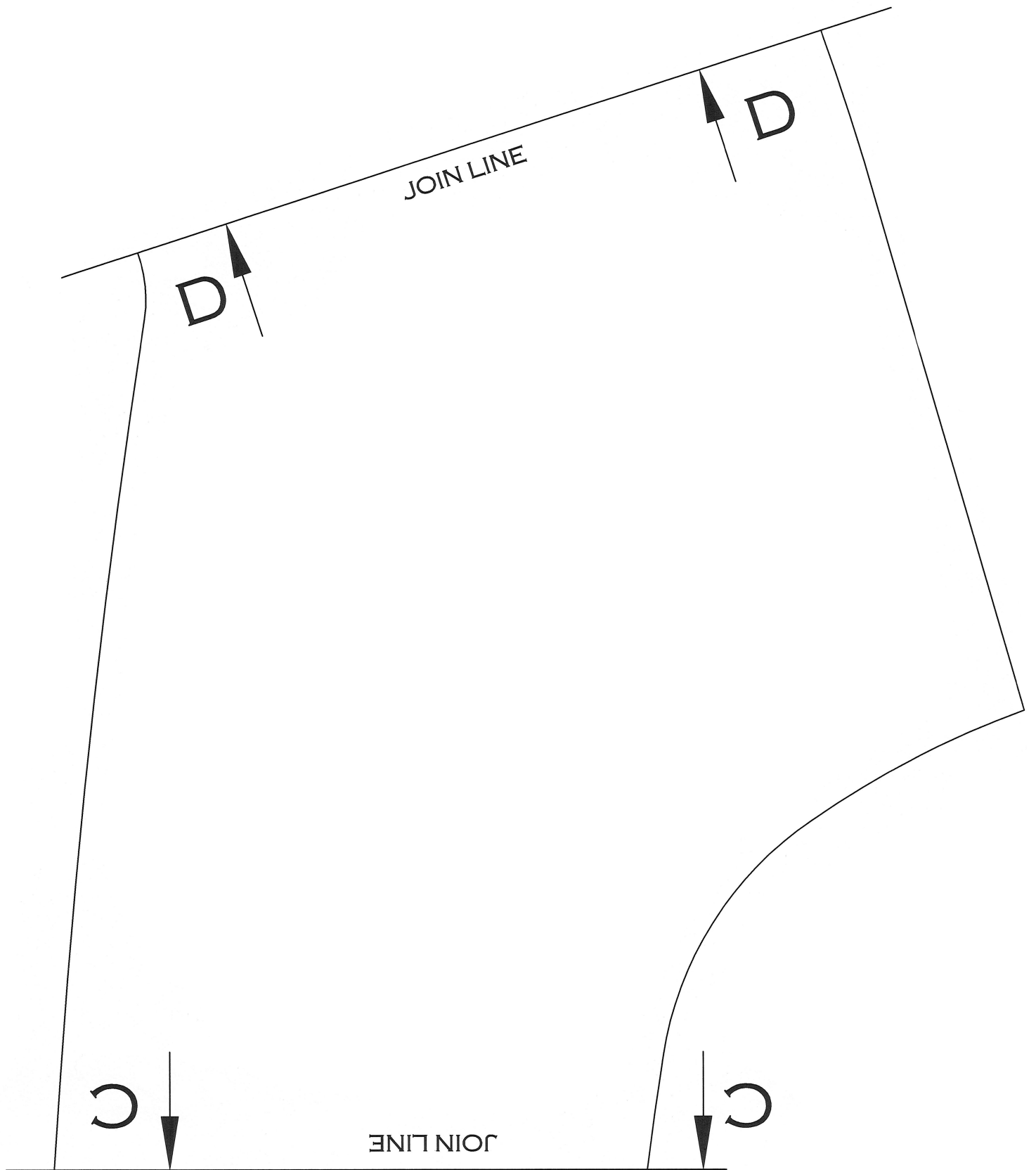
JOIN LINE

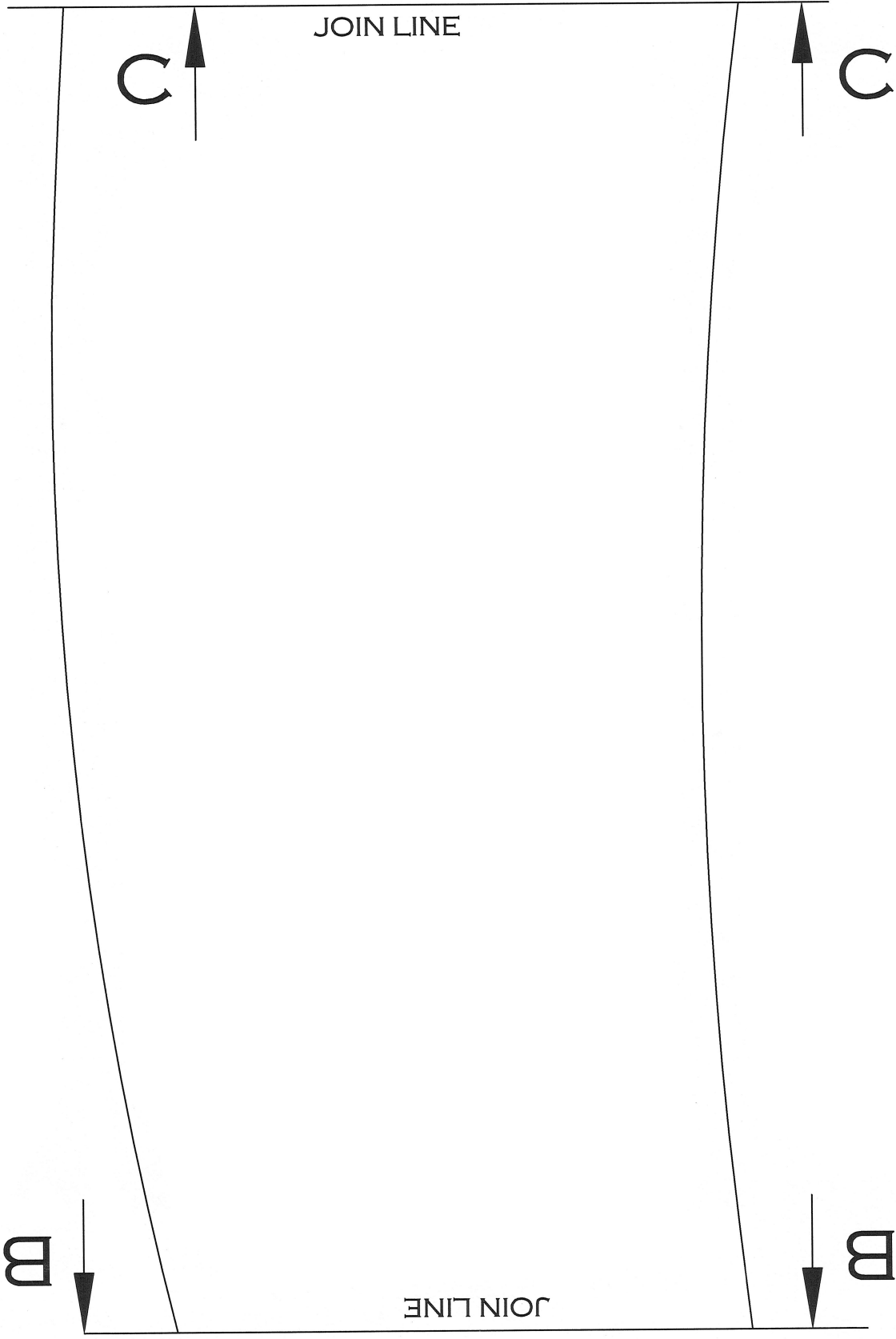
D

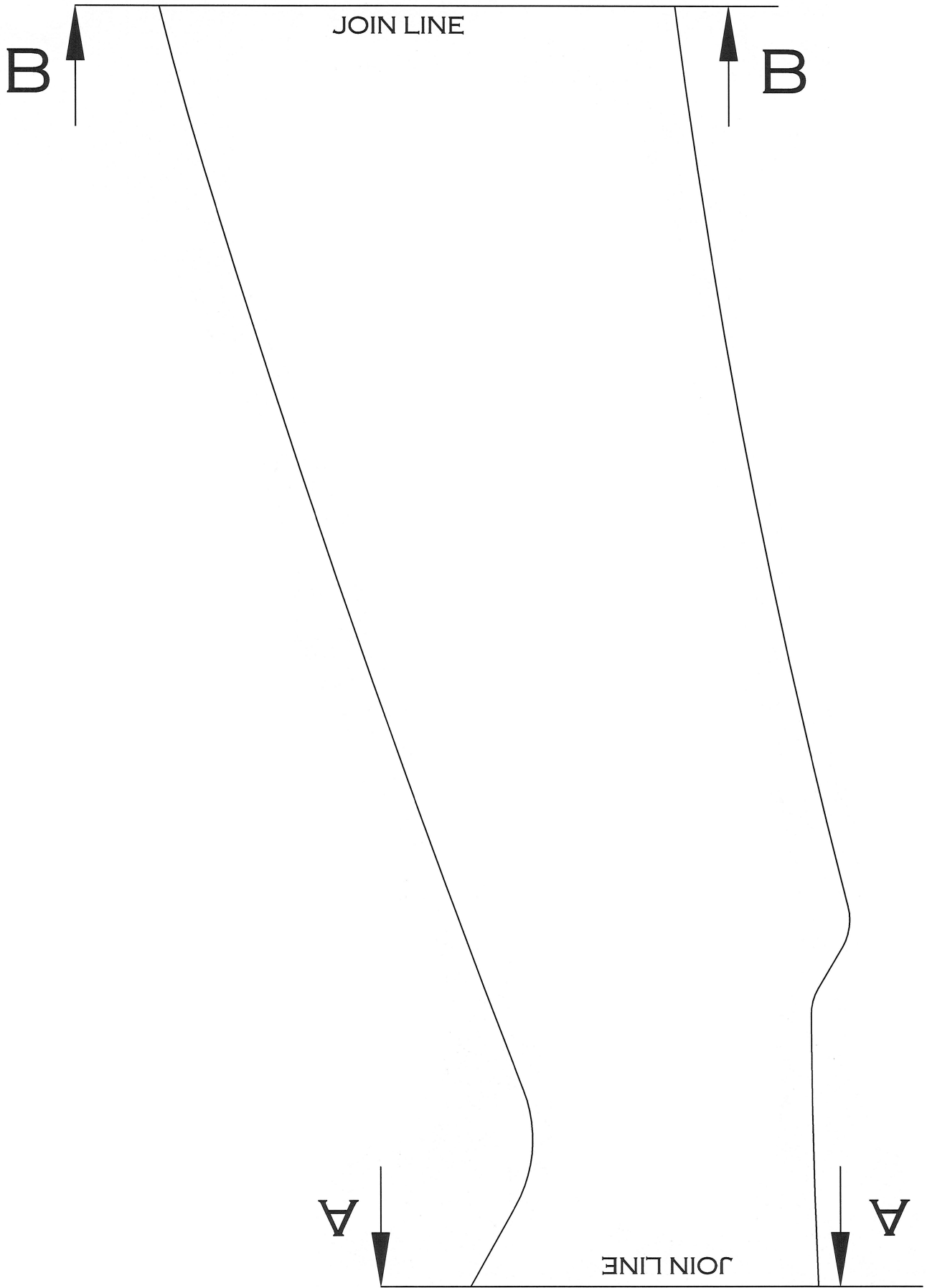
D

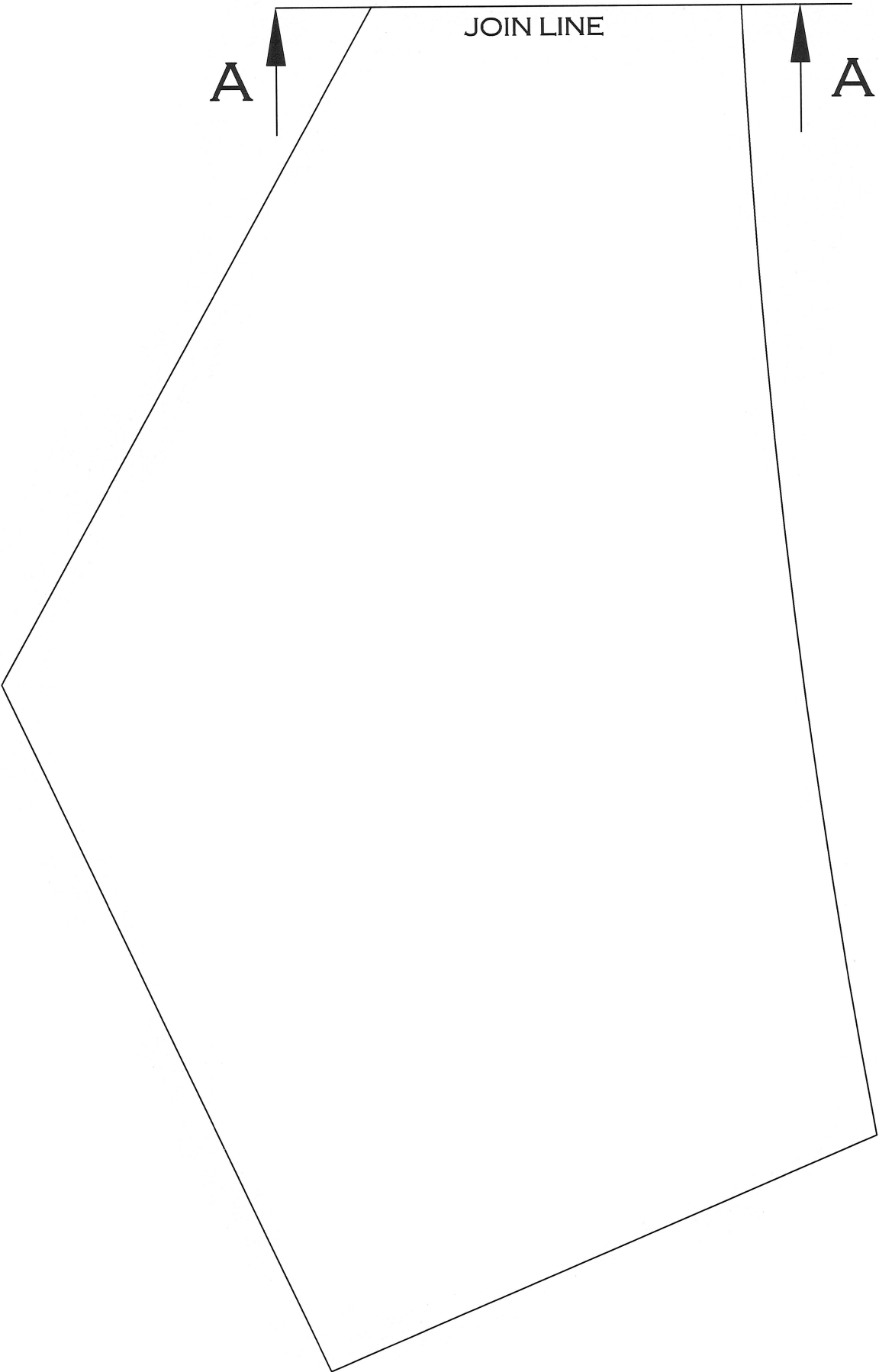
70

ENSURE DRAWING
IS TO SCALE











**WORLD'S BEST
ALLOY BULLBARS**

East Coast Bullbars (ECB Pty Ltd)

Tel: 07 3897 5700

Fax: 07 3283 1168

ecb@ecb.com.au www.ecb.com.au

29 Snook St
Clontarf QLD 4019
Australia

Po Box 122
Margate QLD 4019
Australia

We value your comments

Dear Fitter,

ECB would like to know how you went with the installation of this product. We value your comment and may need to contact you to clarify some details so please complete your contact details clearly.

We would appreciate if you could complete as many of the following details as possible.

Your Name:	Your contact No.
Product Part No.	Product Invoice No.
Product Description:	Make, model, and year of vehicle:
Product Work Order No.	Company your from/Company product purchased from:

Date of Fitment: ___ / ___ / ___

Was the fitting hardware supplied complete?

Yes

No

If no what was not supplied

Did the installation go well?

Yes

No

Please provide comments

Please draw diagrams if you need to.

Post to
Reply Paid 122
PO Box 122
Margate QLD 4019

Fax to
(07) 3283 1168



**WORLD'S BEST
ALLOY BULLBARS**

East Coast Bullbars (ECB Pty Ltd)

Tel: 07 3897 5700

Fax: 07 3283 1168

ecb@ecb.com.au www.ecb.com.au

29 Snook St
Clontarf QLD 4019
Australia

Po Box 122
Margate QLD 4019
Australia



WORLD'S BEST
ALLOY BULLBARS

East Coast Bullbars (ECB Pty Ltd)

Tel: 07 3897 5700

Fax: 07 3283 1168

ecb@ecb.com.au www.ecb.com.au

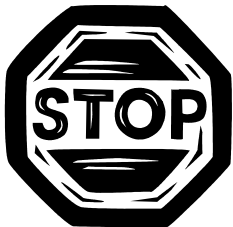
29 Snook St
Clontarf QLD 4019
Australia

Po Box 122
Margate QLD 4019
Australia

DESPATCH CHECKLIST EAFT02SY

Work Order #		See other side of this page for photos of all mounts
Finish:		
Transport:		
Due Date:		

- OC.....1 – Pair Steel mounting brackets.
- OC.....1 – Underbody splash guard.
- BK.....1 – Bolt Kit.
- BK.....1 – Inner Splash Guard Support – **IN KIT**
- BK.....3 – 6mm Air Vents – **IN KIT**
- BK.....1 – LED ECB indicator / park light kit.
- BK.....1 – 1250mm length 6mm clip lock
- BK.....2 – 780mm lengths 3mm clip lock
- BK.....2 – 140mm lengths 3mm clip lock
- OC.....2 – ECB Overrides – **Fitted to Bar**
- OC.....3 – 6mm Air Vents – **Fitted to Bar**



Is this product “the best it can be” Yes
If NO fix before continuing

Wrapper's initials / Checker initials

All parts checked and completed by:

Nut and bolts: _____ Date __ / __ / __

Order control: _____ Date __ / __ / __

Final wrap check: _____ Date __ / __ / __



**WORLD'S BEST
ALLOY BULLBARS**

East Coast Bullbars (ECB Pty Ltd)

Tel: 07 3897 5700

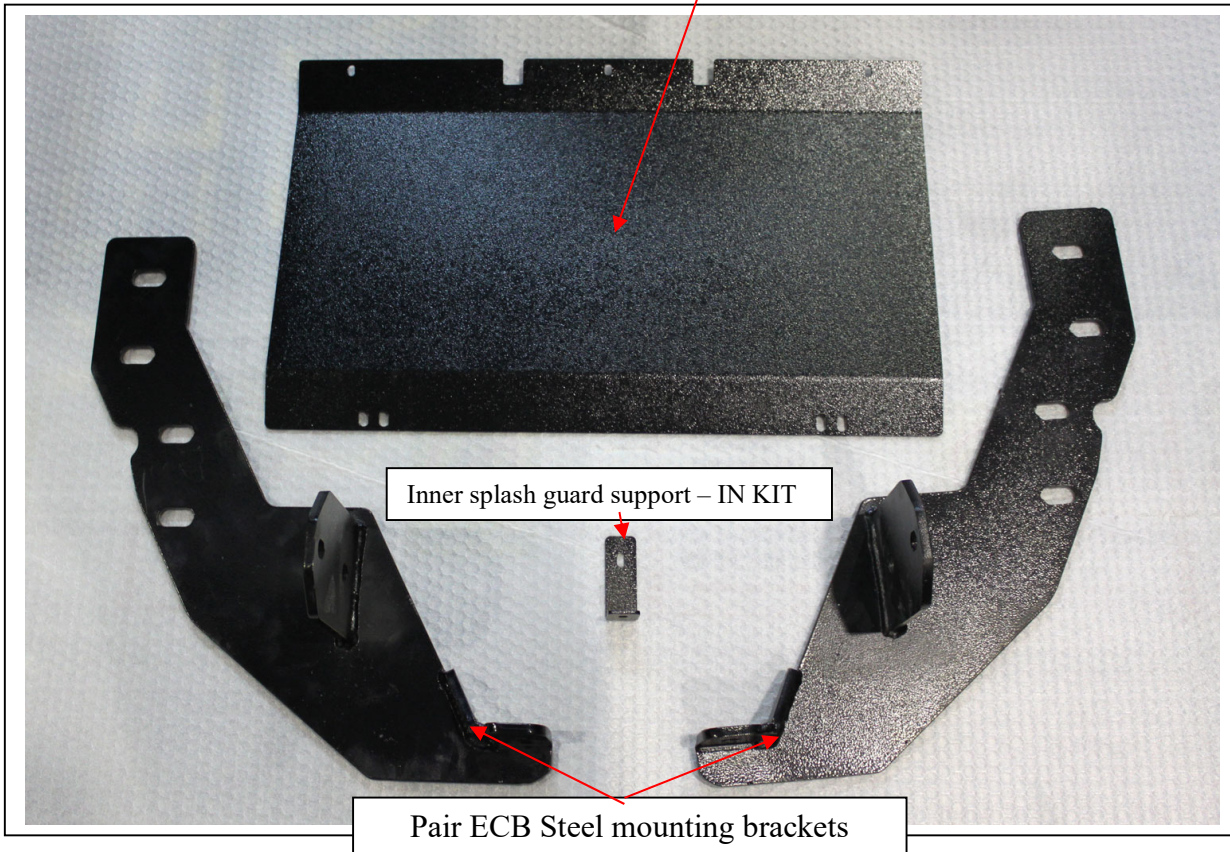
Fax: 07 3283 1168

ecb@ecb.com.au www.ecb.com.au

29 Snook St
Clontarf QLD 4019
Australia

Po Box 122
Margate QLD 4019
Australia

Under body splash guard



Wrapper's initials / Checker initials

Fitting times:

- 1. 1 min
- 2. 3 mins
- 3. 5 mins
- 4. 10 mins
- 5. 5 mins
- 6. 7 mins
- 7. 3 mins
- 8. 4 mins
- 9. 5 mins
- 10. 6 mins
- 11. 3 mins
- 12. 6 mins
- 13. 2 mins
- 14. 1 min
- 15. 1 min



**WORLD'S BEST
ALLOY BULLBARS**

East Coast Bullbars (ECB Pty Ltd)

Tel: 07 3897 5700

Fax: 07 3283 1168

ecb@ecb.com.au www.ecb.com.au

29 Snook St
Clontarf QLD 4019
Australia

Po Box 122
Margate QLD 4019
Australia

16. 1 min

Total time = 63mins + 9 mins to read = 71mins