



East Coast Bullbars (ECB Pty Ltd)

Tel: 07 3897 5700

Fax: 07 3283 1168

ecb@ecb.com.au www.ecb.com.au

29 Snook St  
Clontarf QLD 4019  
Australia

Po Box 122  
Margate QLD 4019  
Australia

EAF167SY

REPLACES: 07.03.18

REVISED: 27.09.22

## FITTING INSTRUCTIONS

### FORD RANGER SERIES 2 and EVEREST ECB ARC BAR WITH FOG LIGHTS AND SONAR SYSTEM VEHICLE FRONTAL PROTECTION SYSTEM (VFPS) FOR AIR BAG & ADR COMPLIANT VEHICLES

Check installation hardware before commencing.

**CAUTION: Ranger and Everest have some differing fixings and parts. In this instruction differences are highlighted by (EVEREST) or (RANGER) at the start of the line.**

1. Lift bonnet
2. Remove four plastic push pull clips from radiator cover on top of grille. Remove radiator cover by sliding hand between grille and radiator support to release clips from front of cover. **See figure 1.**
- 2a. (EVEREST)** Remove five plastic push pull clips and two T30 torx head bolts from radiator cover on top of grille. Remove radiator cover by sliding hand between grille and radiator support to release clips from front of cover.
3. Under front of guards, remove four plastic screw clips and one 8mm head screw from rear corner of bumper / guard join. Pull inner guards away from bumper. **See figure 2.** Disconnect fog lights and parking sensor loom (left hand side of vehicle).
4. From top of grille near headlights remove two 10mm head bolts each side. Gently unclip grille from headlight. Release clips on each side of the grille by reaching through the inner guard and pressing the three clips forward while applying pressure on the grille. From in front of the car reach behind grille and unclip the six clips along the bottom of the grille behind the bumper. Remove grille. **See figure 3** for clip placement.
5. Under front of bumper, remove four 10mm head bolts. **See figure 4.** From on top of the bumper remove four plastic push pull clips.
- 5a. (EVEREST)** Remove four 7mm head bolts from each side of the front underbelly plastic.
6. Gently pull bumper away from guard to release plastic bumper clips. Remove bumper from vehicle.
7. From the back of the bumper remove the parking sensors and the sensor wiring loom and store safely until needed.
8. From underneath the vehicle loosen only the two rear 15mm bolts from the under belly guard. Completely remove the front two 15mm bolts. Slide the guard towards the front of the vehicle and remove.
9. Remove four plastic push pull clip from front plastic support on bumper support. Remove plastic support. **See figure 5.**
10. Unclip connector and remove sonar box. **See figure 6.** **Caution needs to be taken not to drop or damage this unit in anyway.**

11. Remove two plastic push pull clips from plastic air dam behind the bumper support and four 15mm head bolts from front of bumper support. Remove bumper support.
12. Remove plastic radiator air dams, two 8mm head bolts per side.
13. Detach the four lower bumper supports, one 10mm head bolt for centre supports and two 10 mm head bolt for side supports.
- 13a. EVEREST: Remove two 10mm head bolts from air duct above chassis rail, relocate higher using a zip tie supplied. See figure 7a.**
14. Fit steel mounting bracket (supplied) to front of chassis by sliding down from top of chassis. Rear of steel mounting bracket will be tight on outside of chassis. This is an expansion fit. It is important that the mount is level and lined up square with the vehicle body. Refit four original equipment bolts to front of chassis rails and two M10 x 40 bolts, flat washers, spring washers and nuts (supplied) to front hole on side of chassis. **See figure 7. NOTE: Extra holes in steel mounting bracket chassis face plates are not required for non winch bars.**  
**NOTE:** Should the chassis mount not be level and square, a hammer may need to be used to realign the front of the chassis at the connection points on the vehicle to achieve a level and aligned mount.
15. Using steel mounting bracket as a guide, drill rear hole in chassis to 10mm. **Blow filings clear and treat all exposed metal with a rust inhibitor.** Fit M10 x 40 bolts, spring washer, flat washer and nut and washer on 300mm wire (supplied).
16. Trim wheel arch around metallic aerial from drivers side wheel guard, **see figure 8.** Gently relocate the FM aerial as shown in **figure 9 and 10 for Ranger and 10a for Everest.** Drill 6mm attachment holes in top and bottom holes of aerial and attach using a plastic screw clip from lower inner guard.
17. Remove FM booster box from right hand front of vehicle, one 8mm head bolt. Move FM booster box upward and resecure to radiator support using one self-tapping screw (supplied). **See figure 11.**
18. Hold radiator air dam in position on vehicle. **See figure 12.** Mark and trim minimal amount from air dam to fit around ECB steel mount. Attach wiring for aerial or temperature sensor (dependant on side of vehicle), refit to vehicle ensuring wiring has clearance from moving parts and sharp edges.
19. Fit plastic air dams to rear of mounting bracket using M6 x 20 bolts, flat washers and nyloc nuts (supplied).
20. Disconnect indicator and parking lights on vehicle. Install quick click wiring harnesses (supplied) between disconnected harness and indicator / park lights on vehicle. Run wiring out from under lights ensuring clearance from sharp edges and moving parts.
21. **RANGER ONLY** Mark and cut grille. **See figures 13 and 14.**
22. Tape outer corners of bumper for protection when cutting and marking out. Check template for correct sizing. Using sharp scissors, carefully cut bumper template from these instructions. Fit template to outer corners and join line of bumper. Mark bumper for cutting. **See figures 15, 15a, 16 and 16a.** Double check line for correct.  
**CAUTION: READ CAREFULLY AS THERE IS A DIFFERENT CUT FOR RANGER AND EVEREST.**
23. Carefully cut bumper on marked line. **CAUTION:** This cut is the final cut. Ensure lines and cuts are straight and clean as cut is not trimmed.
24. Mark the bumper side clips ready for cutting. **See figure 17.** Remove bumper side clip from vehicle, two 10mm head bolts. Cut the bumper side clips and refit the front section only. **See figure 18.**



East Coast Bullbars (ECB Pty Ltd)

Tel: 07 3897 5700

Fax: 07 3283 1168

ecb@ecb.com.au www.ecb.com.au

29 Snook St  
Clontarf QLD 4019  
Australia

Po Box 122  
Margate QLD 4019  
Australia

25. Fit cut bumper back to the vehicle using the original side clips and grille side plastic push pull clip. Install grille to vehicle using original equipment top clips and lower 10mm head bolts. Install bumper infill (supplied) to rear of guard using original screws into plastic clips.
26. Remove the 3 plastic attachment clips from the sonar box. Remove white protection film from Perspex, Place M6 x 50 bolts, flat washers (supplied) through holes in Perspex and secure using flat washers and Nyloc nuts (supplied). **Do not over tighten as Perspex could crack.** Fit spacing nut to bolts, install sonar box and ECB sonar mount to rear with mounting legs to lower rear. Fit Nyloc nuts (supplied) to lock into position. **See figure 19.**  
**NOTE: Be careful not to scratch Perspex as this could interfere with the correct operation of the sonar.**
27. Install parking sensors into their respective holes in the bar using sensors mounts provided and install wiring loom through the cut outs in the alloy mounts. Using zip ties provided secure the sensor to the mount holding it in position. **Note: Ensure sensors are held firm but not tight and the face is parallel to the channel.**
28. Fit sonar mount onto the Protection bar using the two M8 x 25 bolts, flat washers, spring washers and nyloc nuts (supplied). **See figure 20.** Ensure bolts have clearance from channel.
29. Fit LED indicator / park lights into protection bar as per instructions supplied with the LED indicator kit. **NOTE: Ensure park light is to outside. See figure 21.**
30. Attach fog lights to protection bar. Place M6 x 20 bolts, spring washers (supplied) through light mount from inside and attach nut to top. Slide assembly into light mount in Protection bar and centralize light to hole. **TIGHTEN FIRM ONLY. See figure 22.**
31. Attach 6mm clip lock trim (supplied) to top of protection bar, **NOTE:** Trim off lower edge on an angle so trim will sit flush with end of protection bar. **See figures 23, 24 and 25.**
32. Fit protection bar to outside of steel mounting bracket using M12 x 40 bolts, flat washers, spring washers and nuts (supplied). **Finger tighten only.**
33. Align protection bar to vehicle. **See figures 26 and 27 for Ranger and 26a and 27a for EVEREST. Tighten all bolts.**
34. Connect and check indicator / park lights, fog lights, parking sensors and sonar box for correct operation.
35. Refit under body steel guard using original bolts into steel mounting bracket at front. **Tighten all bolts.**
36. Install under body guards to top of lower leg of channel section of protection bar with rear flange pointing down. **See figure 28.** Access to inner hole from side of plate, rear hole from behind inner guard and front outer hole through access hole in under body guard. Use two M6 x 25 bolts, one M6 x 25 bolt and washer on 100mm wire, flat washers and nyloc nuts (per side). **See figure 29.**
37. Using under body guard as a guide, drill holes in inner guard to 6mm and attach using two M6 x 20 bolts, flat washers and nyloc nuts (per side). Trim inner guards from bottom of channel to vehicles inner guard removing lower section. **See figure 30.**
38. Refit grille- radiator cover using four plastic push pull clips and push gently on the front of cover to seat in position.

**ENSURE NUMBER PLATE IS CLEARLY VISABLE**



**WORLD'S BEST  
ALLOY BULLBARS**

**East Coast Bullbars (ECB Pty Ltd)**

Tel: 07 3897 5700

Fax: 07 3283 1168

ecb@ecb.com.au www.ecb.com.au

29 Snook St  
Clontarf QLD 4019  
Australia

Po Box 122  
Margate QLD 4019  
Australia

**Note:** When fitting/refitting the licence plate to the vehicle, ensure there is no obstruction to licence plate vision in accordance with local authorities. If required relocate licence plate to an alternate location.

**Further VFPS Notes:**

- a) Do not attach VFPS to the vehicle using anchorages not intended for this purpose (e.g. engine mounting bolts).
- b) Do not use this product for any vehicle make or model, other than those specified by the VFPS manufacturer.
- c) Do not remove the plaque or label from the VFPS.
- d) Do not modify the structure of the VFPS in any way.
- e) No accessory or fitment should project forward of the VFPS forward profile.
- f) **ENSURE THESE INSTRUCTIONS ARE LEFT WITH VEHICLE OWNER AND/OR OPERATOR.**

**IMPORTANT INFORMATION**

Periodically check bolts and nuts for correct tightness, especially if travelling on rough roads

**FITTING KIT**

1 – ECB steel mounting bracket	2 – M8 Nyloc Nuts
1 – Pair under body guards (marked with “F ”)	12 – M6 x 20 bolts
1 – Pair guard infill (EAF162SY_IC3AL)	4 – M6 x 25 bolt
1 – ECB sonar mounting bracket NBF160SY_A4MS) (powder coated black)	2 – M6 x 25 bolt and washer on 100 wire
1 – Perspex cover 210 X 100 X 2mm (NBF160SY_A2PL)	3 – M6 x 50 Bolts
<b>Place Perspex in own bag. Do not package with Bolts and nuts.</b>	42 – M6 flat washer
2 – Pair of sensor mounts (EAF163_A3AL)	2 – M6 spring washers
4 – black plastic blanking plugs (ICINSERT22)	5 – M6 nuts
8 – M12 x 1.75 x 40 bolts	22 – M6 nyloc nuts
16 – M12 flat washers	1 – 8 gauge 18-25 pan head Self Tapping Screw
8 – M12 spring washers	1 – ECB indicator park light kit
8 – M12 x 1.75 nuts	1 – ECB Quick click kit (IC15FORAINDH)
4 – M10 x 1.5 x 40 bolts	1 – ECB fog light kit
6 – M10 flat washers	1 – ECB Quick click kit (IC11RAN1004ECBH)
4 – M10 spring washers	2 – Fog light surrounds
2 – M10 x 1.5 nuts	1 – 2550mm Length 6mm clip lock trim
2 – M10 x 1.5 nuts and washers on 300 wire	9 – 300mm zip ties
2 – M8 x 1.5 x 25 bolts	
4 – M8 flat washers	





East Coast Bullbars (ECB Pty Ltd)

Tel: 07 3897 5700

Fax: 07 3283 1168

ecb@ecb.com.au www.ecb.com.au

29 Snook St  
Clontarf QLD 4019  
Australia

Po Box 122  
Margate QLD 4019  
Australia

WORLD'S BEST  
ALLOY BULLBARS



Figure 1



Figure 2

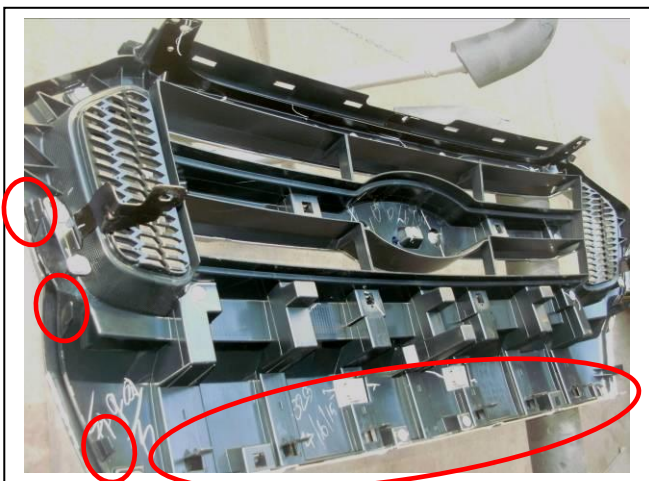


Figure 3: RANGER ONLY



Figure 4

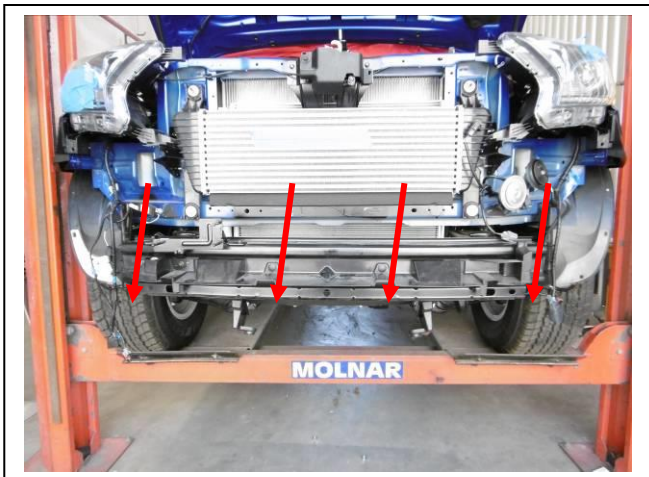


Figure 5



Figure 6





WORLD'S BEST  
ALLOY BULLBARS

East Coast Bullbars (ECB Pty Ltd)

Tel: 07 3897 5700

Fax: 07 3283 1168

ecb@ecb.com.au www.ecb.com.au

29 Snook St  
Clontarf QLD 4019  
Australia

Po Box 122  
Margate QLD 4019  
Australia



Figure 7a

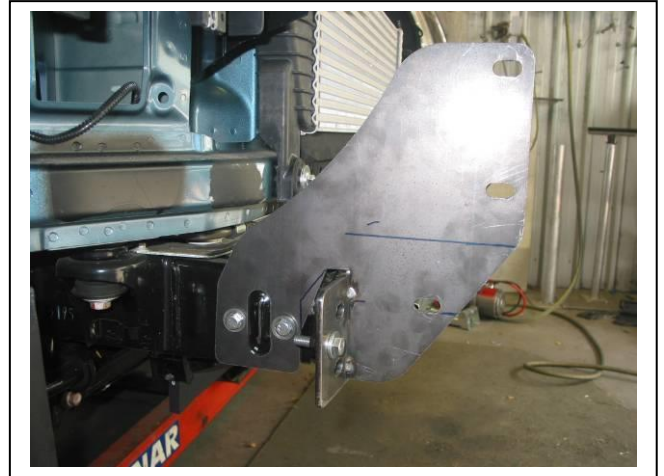


Figure 7

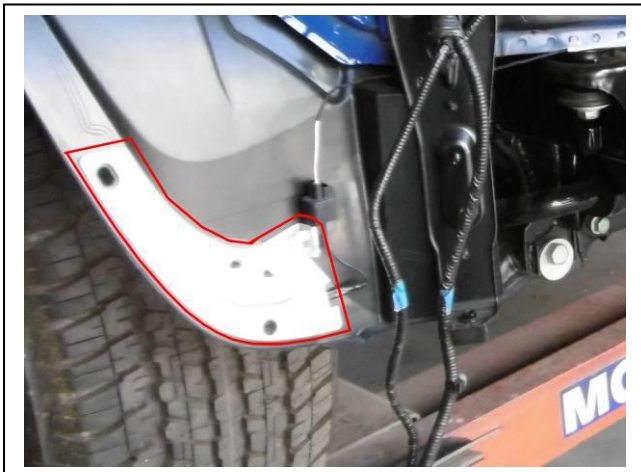


Figure 8



Figure 9: Bend aerial carefully to the shape of the dam and drill in the holes already in place



Figure 10: Bend aerial carefully to the shape of the dam and drill in the holes already in place



Figure 10a EVEREST: Bend aerial carefully to the shape of the dam and drill in the holes already in place





East Coast Bullbars (ECB Pty Ltd)

Tel: 07 3897 5700

Fax: 07 3283 1168

ecb@ecb.com.au www.ecb.com.au

29 Snook St  
Clontarf QLD 4019  
Australia

Po Box 122  
Margate QLD 4019  
Australia

WORLD'S BEST  
ALLOY BULLBARS

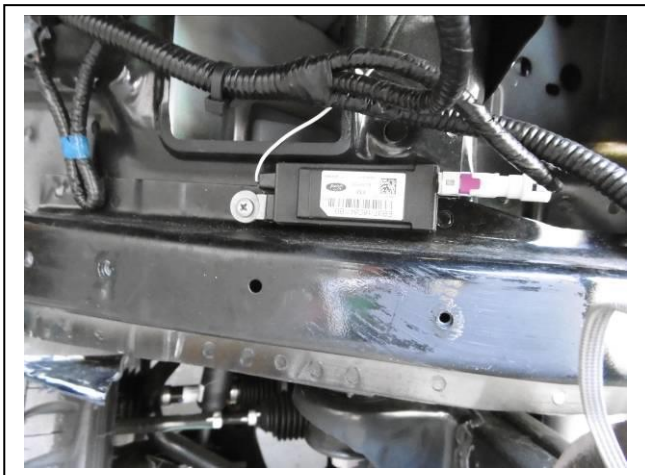


Figure 11: Relocate FM booster from hole below to on top of the railing



Figure 12



Figure 13

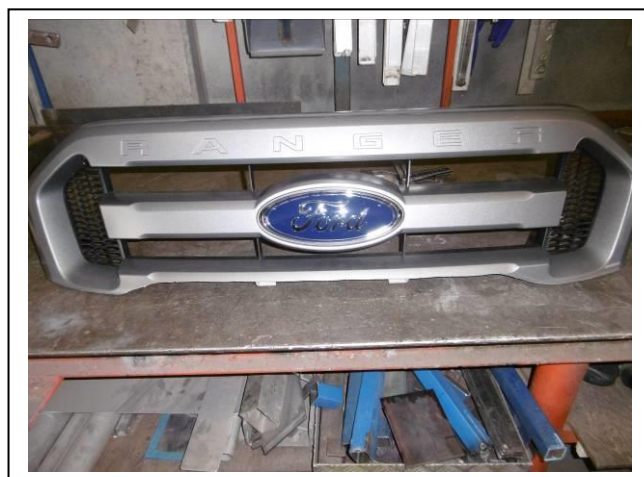


Figure 14



Figure 15: RANGER TRIM



Figure 16: RANGER TRIM





East Coast Bullbars (ECB Pty Ltd)

Tel: 07 3897 5700

Fax: 07 3283 1168

ecb@ecb.com.au www.ecb.com.au

WORLD'S BEST  
ALLOY BULLBARS

29 Snook St  
Clontarf QLD 4019  
Australia

Po Box 122  
Margate QLD 4019  
Australia



Figure 15a: EVEREST TRIM

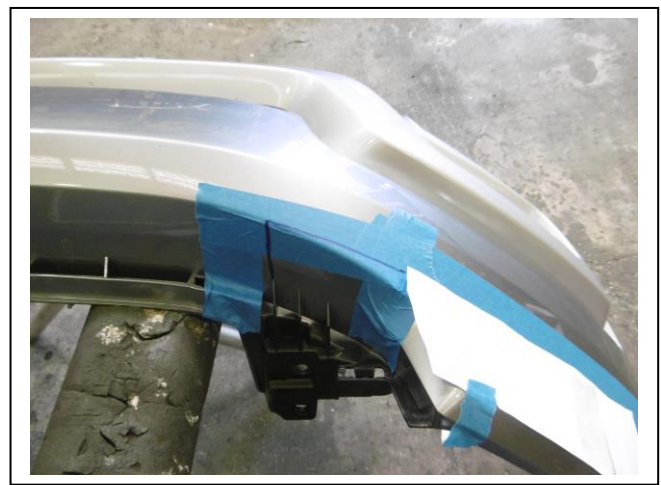


Figure 16a: EVEREST TRIM

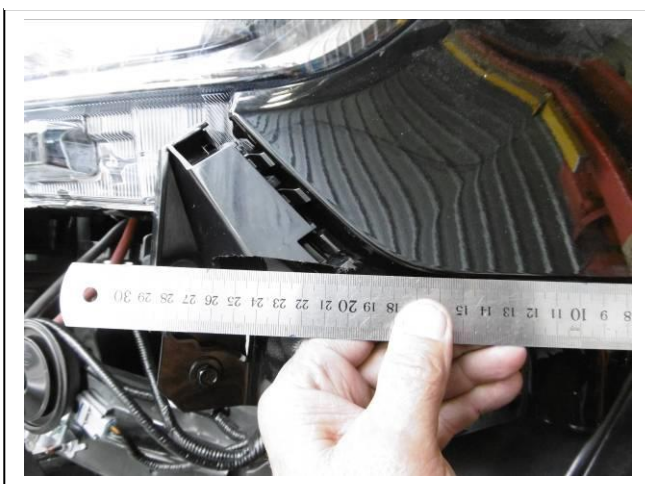


Figure 17

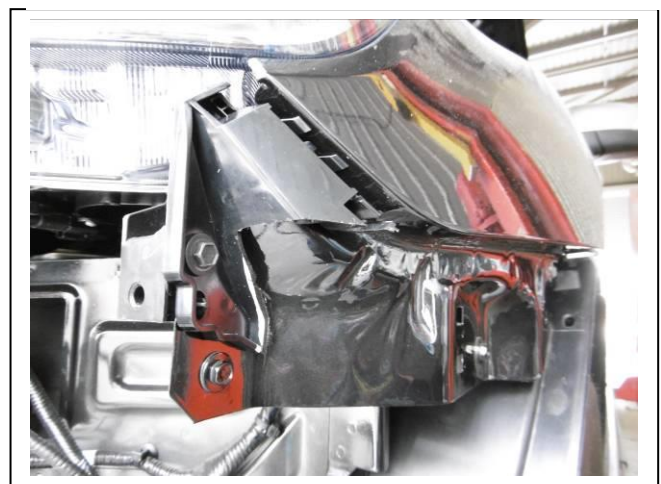


Figure 18

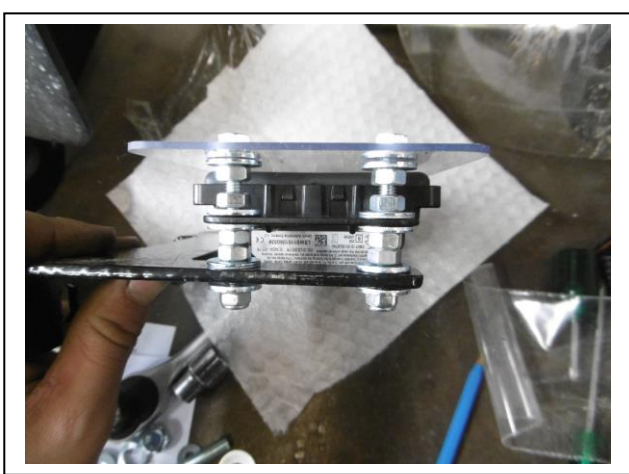


Figure 19:



Figure 20: Attach mount to lower leg of channel





East Coast Bullbars (ECB Pty Ltd)

Tel: 07 3897 5700

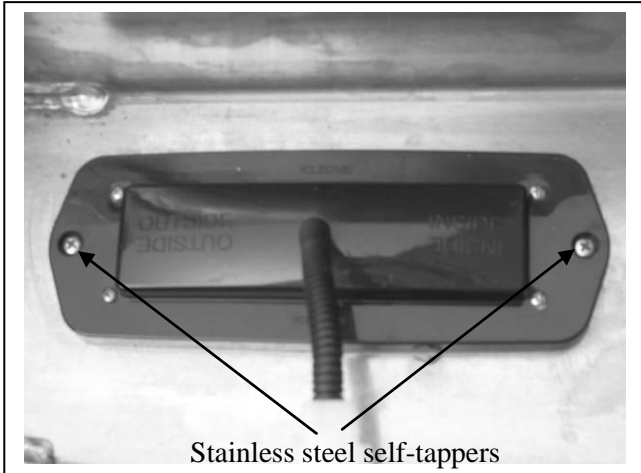
Fax: 07 3283 1168

ecb@ecb.com.au www.ecb.com.au

WORLD'S BEST  
ALLOY BULLBARS

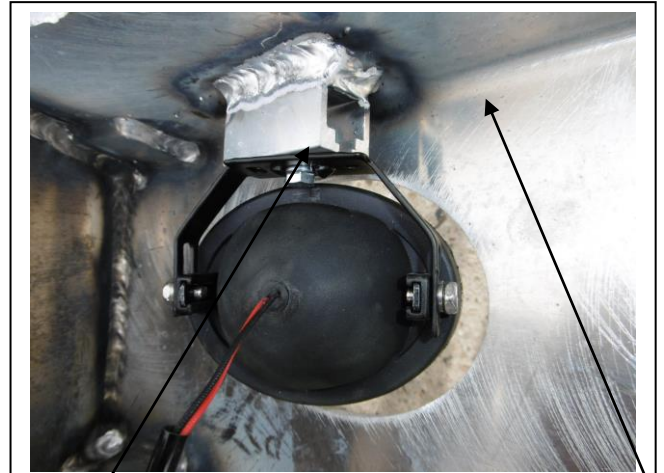
29 Snook St  
Clontarf QLD 4019  
Australia

Po Box 122  
Margate QLD 4019  
Australia



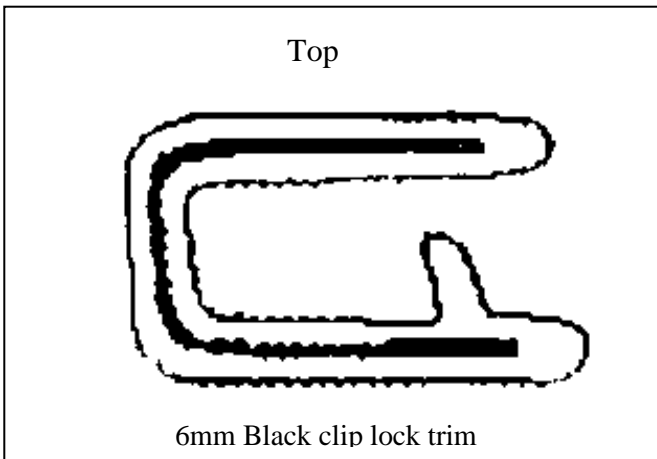
Stainless steel self-tappers

Figure 21



M6 bolt

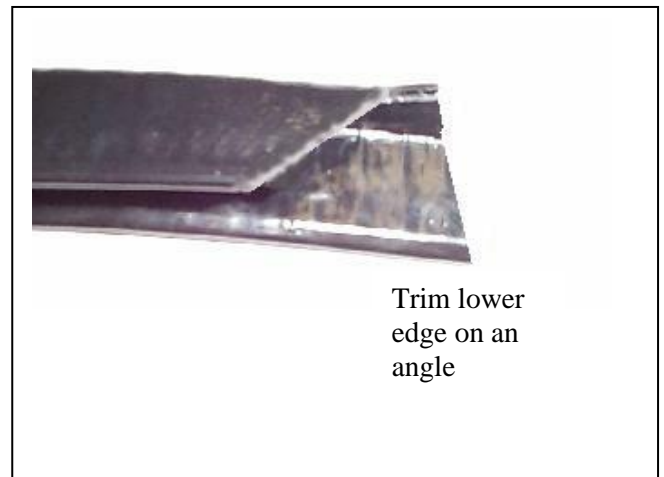
Figure 22



Top

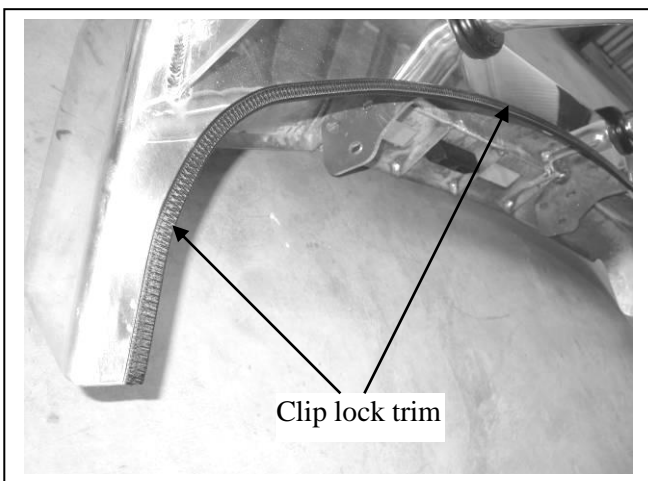
6mm Black clip lock trim

Figure 23



Trim lower  
edge on an  
angle

Figure 24



Clip lock trim

Figure 25



Figure 26



East Coast Bullbars (ECB Pty Ltd)

Tel: 07 3897 5700

Fax: 07 3283 1168

ecb@ecb.com.au www.ecb.com.au

WORLD'S BEST  
ALLOY BULLBARS

29 Snook St  
Clontarf QLD 4019  
Australia

Po Box 122  
Margate QLD 4019  
Australia

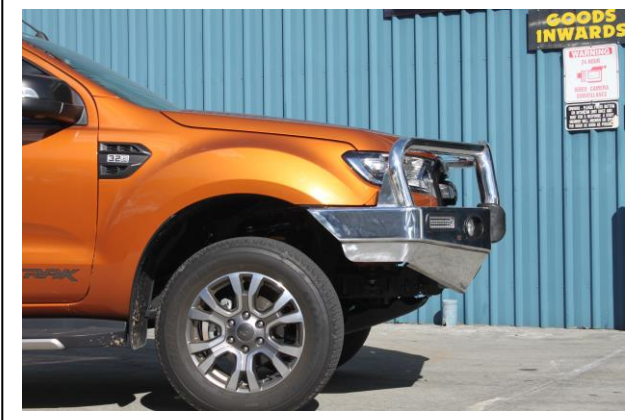


Figure 27



Figure 26



Figure 28: placement of under body guard.  
Bumper removed for photo.



Figure 29: Placing bolt in from side of under body guard.



Figure 30: Using underbelly guard as a guide trim wheel





**WORLD'S BEST  
ALLOY BULLBARS**

**East Coast Bullbars (ECB Pty Ltd)**

Tel: 07 3897 5700

Fax: 07 3283 1168

ecb@ecb.com.au www.ecb.com.au

29 Snook St  
Clontarf QLD 4019  
Australia

Po Box 122  
Margate QLD 4019  
Australia

**We value your comments**

Dear Fitter,

ECB would like to know how you went with the installation of this product. We value your comment and may need to contact you to clarify some details so please complete your contact details clearly.

We would appreciate if you could complete as many of the following details as possible.

<b>Your Name:</b>	<b>Your contact No.</b>
<b>Product Part No.</b>	<b>Product Invoice No.</b>
<b>Product Description:</b>	<b>Make, model, and year of vehicle:</b>
<b>Product Work Order No.</b>	<b>Company your from/Company product purchased from:</b>

**Date of Fitment:** \_\_\_\_/\_\_\_\_/\_\_\_\_

Was the fitting hardware supplied complete?

Yes

No

If no what was not supplied

---

---

Did the installation go well?

Yes

No

Please provide comments

---

---

---

Please draw diagrams if you need to.

**Post to**  
Reply Paid 122  
PO Box 122  
Margate QLD 4019

**Fax to**  
(07) 3283 1168



**WORLD'S BEST  
ALLOY BULLBARS**

**East Coast Bullbars (ECB Pty Ltd)**

Tel: 07 3897 5700

Fax: 07 3283 1168

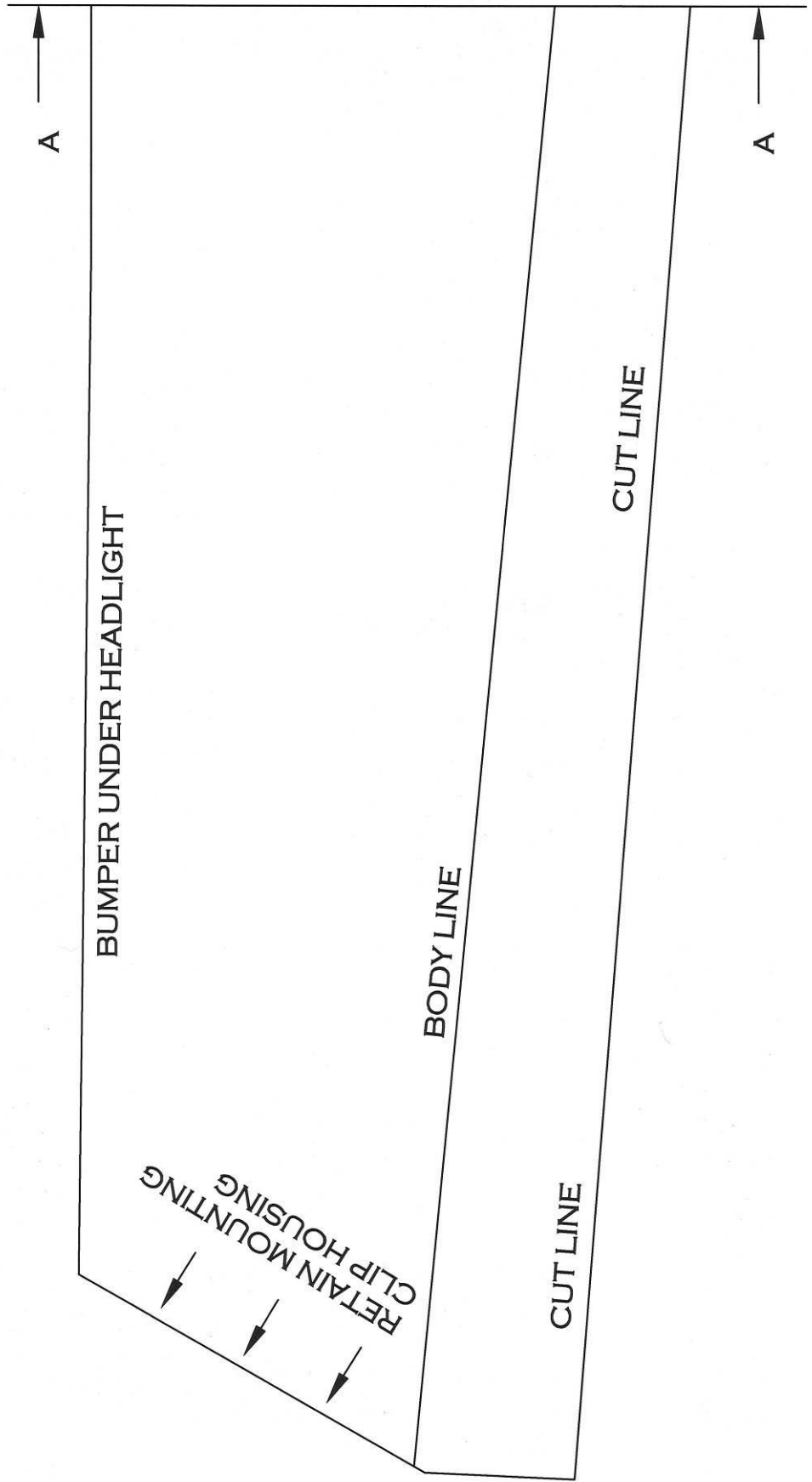
ecb@ecb.com.au [www.ecb.com.au](http://www.ecb.com.au)

29 Snook St  
Clontarf QLD 4019  
Australia

Po Box 122  
Margate QLD 4019  
Australia



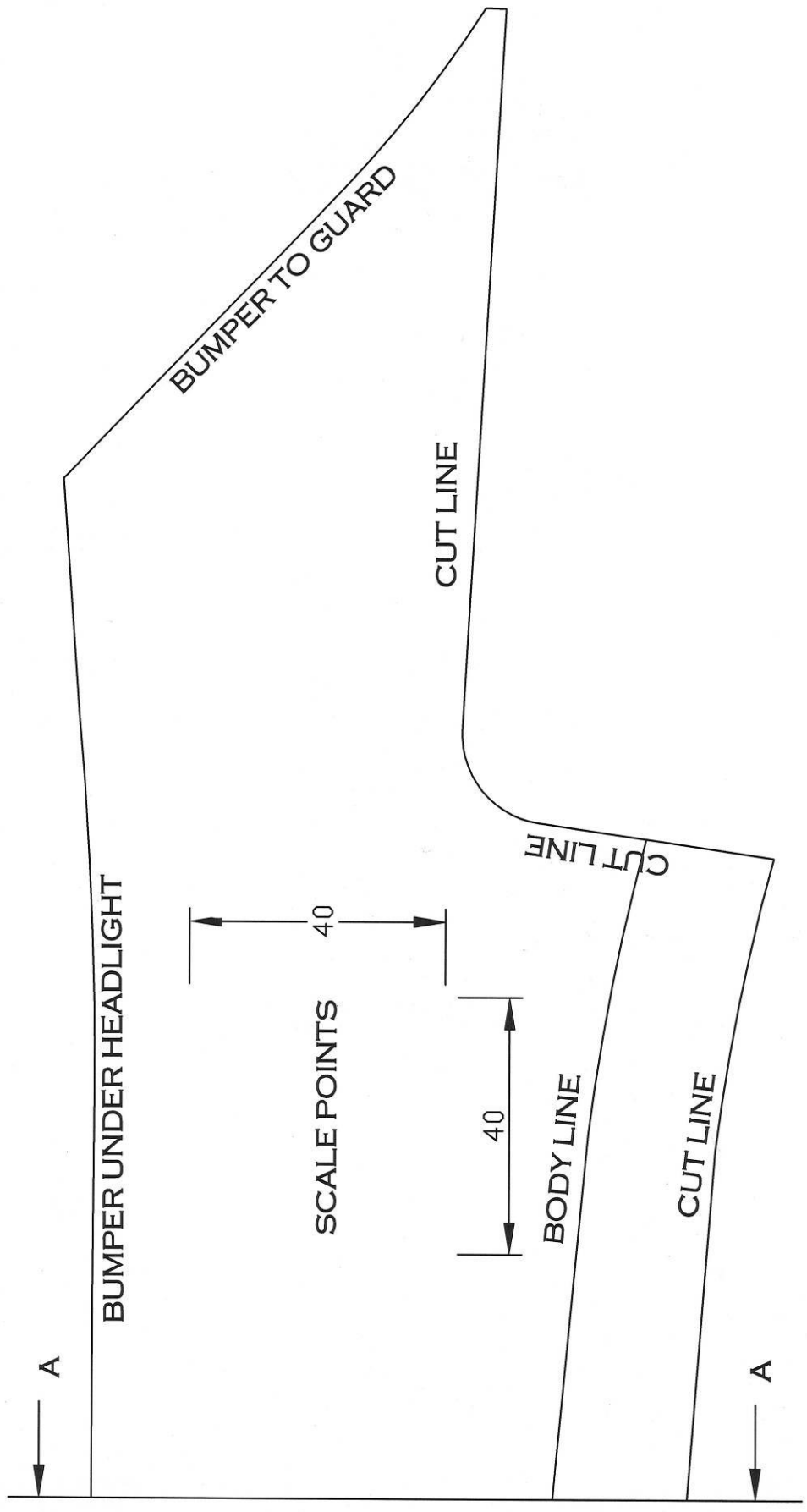
# BUMPER TEMPLATE







# BUMPER TEMPLATE

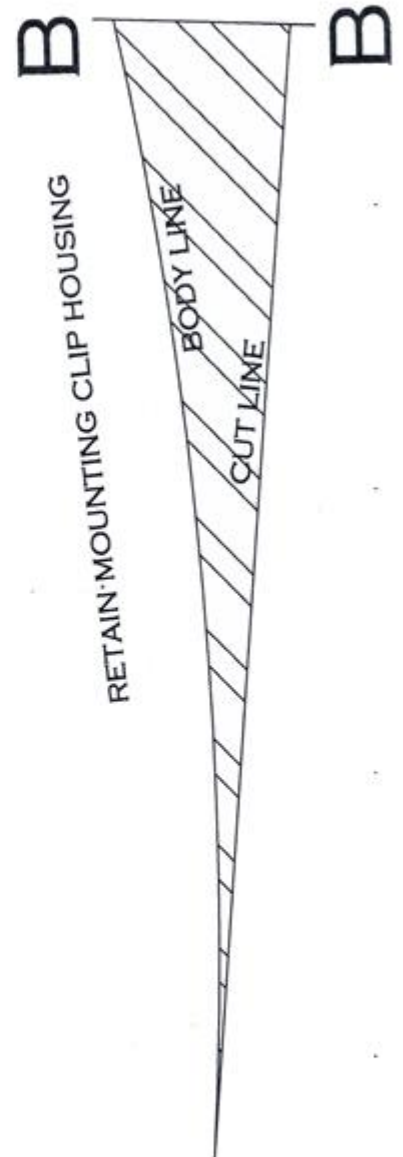






This template is used for  
**EVEREST ONLY**

Continue cut line from  
template until it meets  
the body line under grille  
opening.







WORLD'S BEST ALLOY BULLBARS

East Coast Bullbars (ECB Pty Ltd)

Tel: 07 3897 5700

Fax: 07 3283 1168

ecb@ecb.com.au www.ecb.com.au

29 Snook St  
Clontarf QLD 4019  
Australia

Po Box 122  
Margate QLD 4019  
Australia

## DESPATCH CHECKLIST EAF167SY

Work Order #		<b>See other side of this page for photos of all mounts</b>
Finish:		
Transport:		
Due Date:		

OC.....1 – Steel mounting bracket.

OC.....1 – Pair under body guards “F” cut in front

BK.....1 – Sonar mounting bracket (NBF160SY\_A4MS) (powder coated black)

BK.....2 – Pair Parking Sensor mounts (EAF163SY\_A3AL)

BK.....1 – Bolt Kit.

BK.....1 – ECB indicator / park light kit

BK.....1 – Quick click harness (IC15FORAINDH)

BK.....1 – ECB fog light kit

BK.....1 – quick click fog kit (IC11RAN1004ECBH)

BK.....2 – Fog light trims (in kit not fitted)

BK.....1 – 2550mm Length 6mm clip lock trim

BK.....1 – 210 X 100 X 2mm Perspex cover (NBF160SY\_A2PL)

**Ensure Perspex is not damaged in any way. CAUTION: do not bend or scratch Perspex. Place in own bag, not with bolts and nuts.**

OC.....2 – ECB Overrides – **Fitted to Bar**

OC.....4 – 6mm Air Vents – **Fitted to Bar**

OC..... Agi-pipe must be put on the end of the bar – see photo for placement



**Is this product “the best it can be” Yes**  
**If NO fix before continuing**

All parts checked and completed by:

Nut and bolts: \_\_\_\_\_ Date \_\_/\_\_/\_\_

Order control: \_\_\_\_\_ Date \_\_/\_\_/\_\_

Final wrap check: \_\_\_\_\_ Date \_\_/\_\_/\_\_



East Coast Bullbars (ECB Pty Ltd)

Tel: 07 3897 5700

Fax: 07 3283 1168

ecb@ecb.com.au www.ecb.com.au

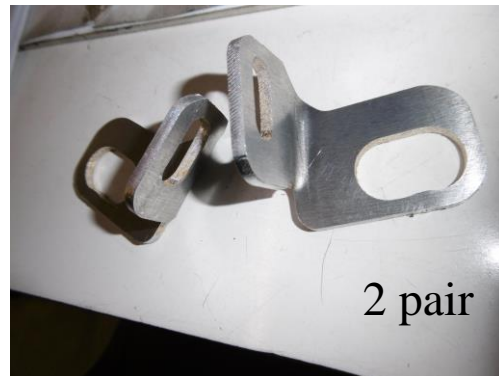
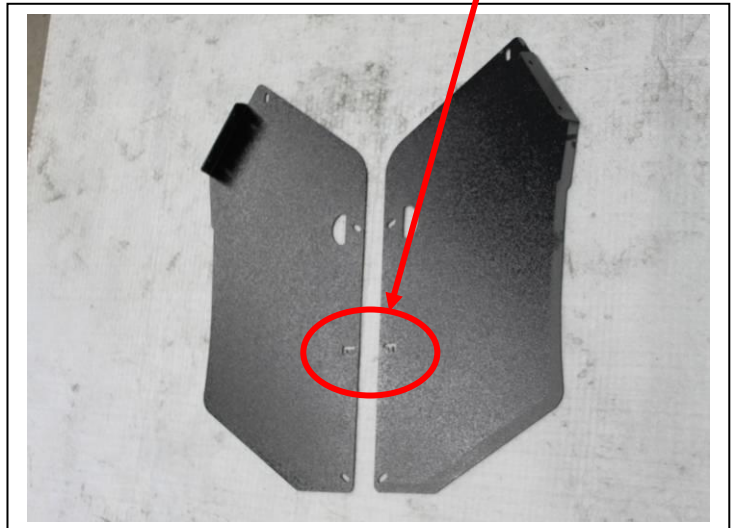
WORLD'S BEST ALLOY BULLBARS

29 Snook St  
Clontarf QLD 4019  
Australia

Po Box 122  
Margate QLD 4019  
Australia



NOTE: "F" in side underbelly guard



2 pair

\_\_\_\_\_  
Wrapper's initials / Checker initials





**WORLD'S BEST  
ALLOY BULLBARS**

**East Coast Bullbars (ECB Pty Ltd)**

Tel: 07 3897 5700

Fax: 07 3283 1168

ecb@ecb.com.au www.ecb.com.au

29 Snook St  
Clontarf QLD 4019  
Australia

Po Box 122  
Margate QLD 4019  
Australia



**Ensure Wing is wrapped with Agi-Pipe**