



**WORLD'S BEST
ALLOY BULLBARS**

East Coast Bullbars (ECB Pty Ltd)

Tel: 07 3897 5700

Fax: 07 3283 1168

ecb@ecb.com.au www.ecb.com.au

29 Snook St
Clontarf QLD 4019
Australia

Po Box 122
Margate QLD 4019
Australia

BV04SY

REPLACES: 19.05.17
REVISED: 16.10.19

FITTING INSTRUCTIONS

VOLKSWAGON TRANSPORTER 01/17on BIG TUBE™ PROTECTION BAR VEHICLE FRONTAL PROTECTION SYSTEM (VFPS) FOR AIR BAG & ADR COMPLIANT VEHICLES

Check installation hardware before commencing.

Special Tools: T25 and T30 Torx bit and associated driver

Air or electrically driven ratchet

Straight sided “g” clamps or medium “c” vice grips

1. Open bonnet.
2. Remove three plastic push pull clips from grille and plastic screw clip from battery inner wall section. Remove inner wall section.
3. Remove six 13mm head bolts from centre under body guard. Unclip from plastic guard hanger and remove.
4. Disassemble front of inner guard removing two T25 Torx head screws from underside, two T25 Torx head screws from front of wheel arch (per side) and one plastic push pull clip (per side). Peel back inner guard to access rear flat edge of plastic bumper.
5. Remove one push pull plastic clip from rear edge of bumper where it meets guard. Pull sides of bumper from retaining clips and forward to remove from retaining clips on inner corner of headlights and centre of bumper. **CAUTION:** clips (2 clips, 80mm apart) on inner headlight and bumper centre can be easily broken. Push clip from underside to remove. **See figure 1.**
6. Remove T25 Torx Screw from underside of lower radiator mount. Lower radiator mounts are part of the bumper support on this model and as such are removed and replaced by ECB steel mounts.
7. Using medium “c” clamp, vice grip or similar, clamp top radiator mount to radiator support to raise radiators from lower mounts and support when bumper support is removed. **See figure 2. Caution:** Radiators need to be supported upon removal of bumper support. Failure to do this means radiators will drop from the top mounts making refitting difficult.
8. Remove bumper cover support. Five 13mm head bolts (per side).
9. Fit ECB steel chassis support brackets (supplied) to front of chassis ends using two M10 x 1.25 x 35mm bolts, spring washers and flat washers from underside, flat washers and nuts (supplied) on inside of chassis rails. **See figure 3. Finger tighten only. Warning:** Plates must be fitted to support front of chassis rail. If not fitted, damage to vehicle may occur. **Caution:** Bolts, spring washers and a flat washer (per bolt) must be to underside of chassis rail.
10. Install ECB bumper support (supplied) to front of chassis rail using lower three M8 x 40 x 1.25 bolts, spring washers and large flat washers for lower holes in mount and one M8 x 35 x 1.25, spring washers and large flat washers for top plastic radiator support mount (per side) (supplied), M12 x 40 bolt, flat washers, spring washers and nuts (supplied) to outer middle hole of mount. **See figure 4.** Remove radiator support rubbers from radiator mount and fit to ECB Steel radiator mounts by placing through hole in ECB steel mount and turning a half turn. Install using one M8 x 40 bolt, spring washer and large flat washer for upper hole and one M10 x 35 bolt, large



**WORLD'S BEST
ALLOY BULLBARS**

East Coast Bullbars (ECB Pty Ltd)

Tel: 07 3897 5700

Fax: 07 3283 1168

ecb@ecb.com.au www.ecb.com.au

29 Snook St
Clontarf QLD 4019
Australia

Po Box 122
Margate QLD 4019
Australia

flat washers, spring washers and nut (supplied) for lower hole. Align and centre to vehicle.; **Tighten all bolts.** See figure 5. Lower radiators back to original position and refit T25 Torx screw to underside of mount.

11. Fit M8 nuts, spring washers and flat washers (supplied) to rear of chassis mount bolts. Ensure bolt is through chassis support bracket. Hold front of bolt to tighten nut, spring washer and flat washer to rear. **Tighten all bolts.** See figure 6.
12. Splice ECB wiring harness into original vehicle harness behind headlights using cable locks (supplied). Ensure harness is clear of sharp edges and moving parts.
13. Measure and mark openings on bumper to match ECB steel mount. Double check measurements before cutting to ensure correct. Trim openings from top grille and lower blanking panel to allow access for top of chassis mount to protrude. See figure 7 and 8.
14. In outer lower panel of grille, drill a hole large enough to allow wiring harness through the bumper.
15. Refit bumper cover to vehicle as per reverse of steps 2 to 5. Ensure ECB wiring harness hangs through front of bumper cover.
16. Fit ECB LED indicator / park lights (supplied) into protection bar as per instructions supplied with the LED indicator kit. **NOTE: Ensure park light is to outside.** See figure 13.
17. Attach 6mm clip lock trim (supplied) to top of ECB protection bar. **NOTE:** Trim off lower edge on an angle so trim will sit flush with end of protection bar. See figures 14, 15 and 16.
18. Attach ECB protection bar to inside of steel chassis mount using six M12 x 40 bolts, flat washers, spring washers and nuts (per side) (supplied). For ease of fitment, place bolt heads to inside of mount. Caution must be taken as skirts ends and rear of wings are close to plastic bumper. **Finger tighten only.**
19. Align ECB protection bar to vehicle. **Tighten all bolts.** Bolts are tightened through vent openings in front of bar. Caution is required so protection bar finish is not damaged. See figures 18 and 19.
20. Connect and test indicator/ park / DRL lights for correct operation.

ENSURE NUMBER PLATE IS CLEARLY VISABLE

Note: When fitting/refitting the licence plate to the vehicle, ensure there is no obstruction to licence plate vision in accordance with local authorities. If required relocate licence plate to an alternate location.

Further VFPS Notes:

- a) Do not attach VFPS to the vehicle using anchorages not intended for this purpose (e.g. engine mounting bolts).
- b) Do not use this product for any vehicle make or model, other than those specified by the VFPS manufacturer.
- c) Do not remove the plaque or label from the VFPS.
- d) Do not modify the structure of the VFPS in any way.
- e) No accessory or fitment should project forward of the VFPS forward profile.
- f) **ENSURE THESE INSTRUCTIONS ARE LEFT WITH VEHICLE OWNER AND/OR OPERATOR.**

IMPORTANT INFORMATION

Periodically check bolts and nuts for correct tightness, especially if travelling on rough roads



**WORLD'S BEST
ALLOY BULLBARS**

East Coast Bullbars (ECB Pty Ltd)

Tel: 07 3897 5700

Fax: 07 3283 1168

ecb@ecb.com.au www.ecb.com.au

29 Snook St
Clontarf QLD 4019
Australia

Po Box 122
Margate QLD 4019
Australia

FITTING KIT

1 – ECB steel bumper support	2 – M8 x 1.25 x 35 bolts
1 – Pair ECB steel chassis support brackets	6 – M8 x 1.25 x 40 bolts
1 – Pair ECB steel radiator mounts	6 – M8 flat washers
8 – M12 x 1.75 x 40 bolts	16 – M8 spring washers
16 – M12 flat washers	6 – M8 nuts
8 – M12 spring washers	14 – 5/16 x 1 washers
8 – M12 nuts	1 – ECB LED Indicator / Park light kit (ICLED105ECB)
6 – M10 x 1.5 x 35 bolts	6 – Cable locks
6 – M10 flat washers	4 – ECB fog light trims
6 – M10 spring washers	1 – 2500mm length 6mm clip lock trim
6 – M10 nuts	2 – 350mm length 6mm clip lock trim
2 – M8 x 1.25 x 25 bolts	



Figure 1: Bumper side panel holding clips.
Passenger's side shown



Figure 2: Supporting radiators using sliding “c” clamps under top mount. Note position of clamp

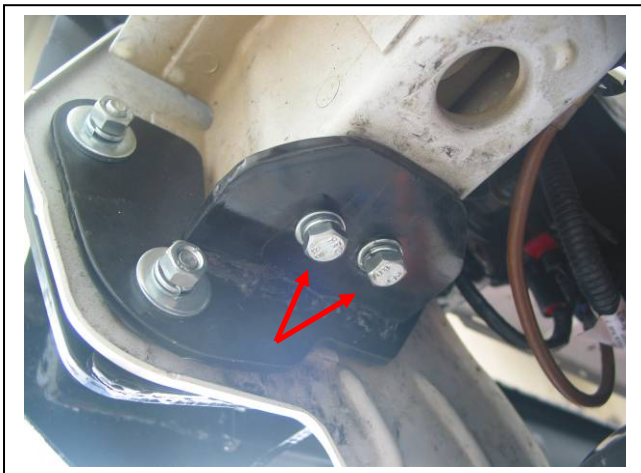


Figure 3: Chassis support attached to front of chassis. Passengers side shown.

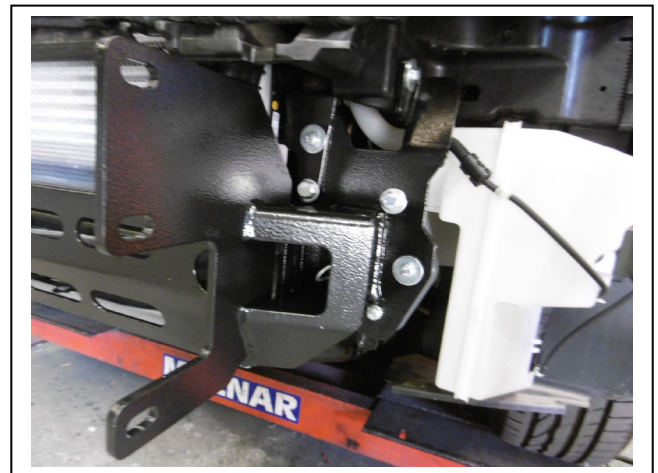


Figure 4: Bumper support attached to vehicle. Passengers side shown.



**WORLD'S BEST
ALLOY BULLBARS**

East Coast Bullbars (ECB Pty Ltd)

Tel: 07 3897 5700

Fax: 07 3283 1168

ecb@ecb.com.au www.ecb.com.au

29 Snook St
Clontarf QLD 4019
Australia

Po Box 122
Margate QLD 4019
Australia

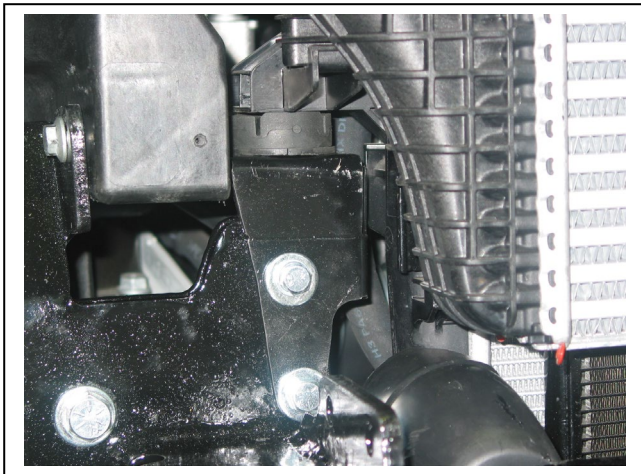


Figure 5: Drivers side radiator mount fitted.

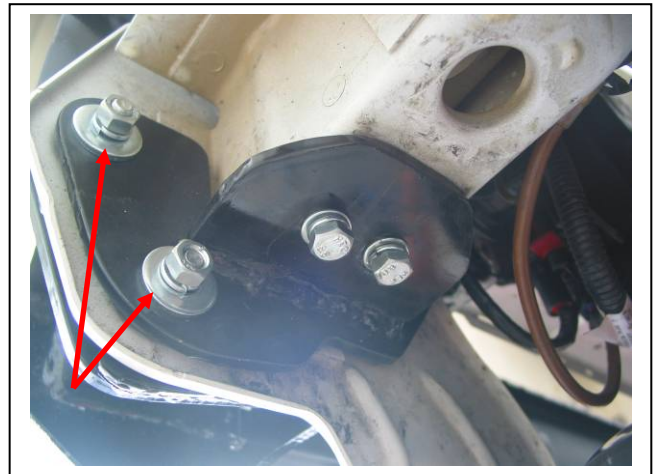


Figure 6: Nuts to rear of chassis mount.

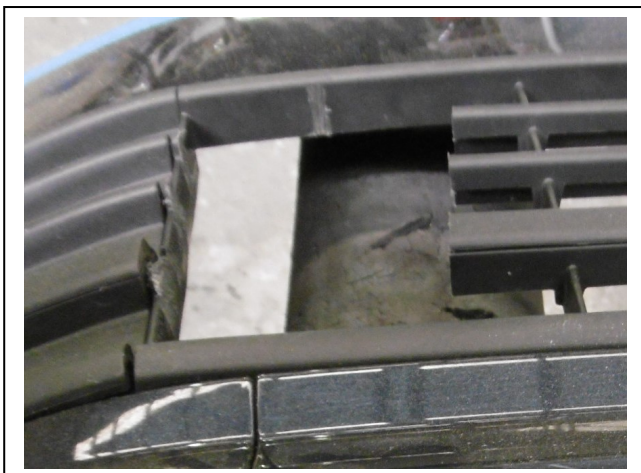
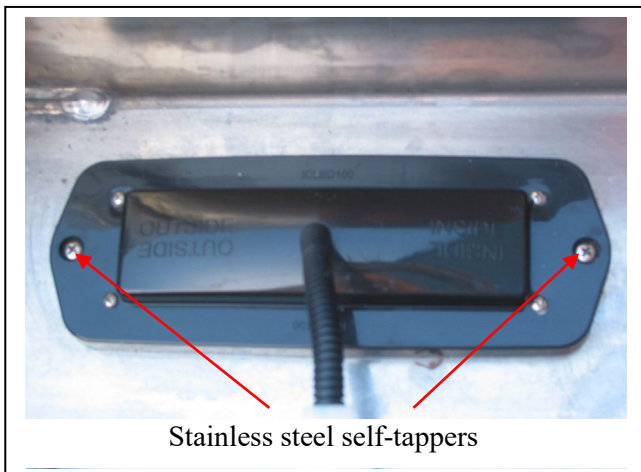


Figure 7: Top grille outer open section cut

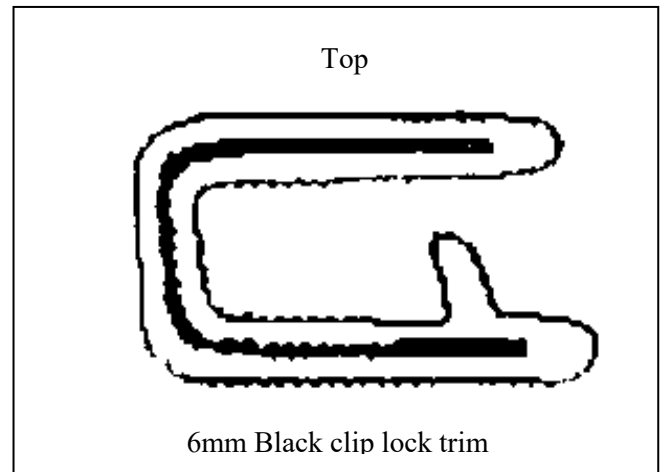


Figure 8: Lower blanking grille cut. **NOTE:** Take measurement from mount supplied with Protection bar



Stainless steel self-tappers

Figure 9



Top

6mm Black clip lock trim

Figure 10



**WORLD'S BEST
ALLOY BULLBARS**

East Coast Bullbars (ECB Pty Ltd)

Tel: 07 3897 5700

Fax: 07 3283 1168

ecb@ecb.com.au www.ecb.com.au

29 Snook St
Clontarf QLD 4019
Australia

Po Box 122
Margate QLD 4019
Australia

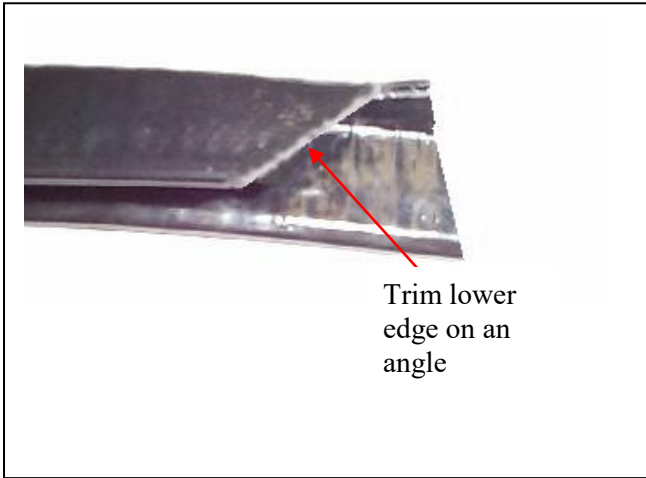


Figure 11

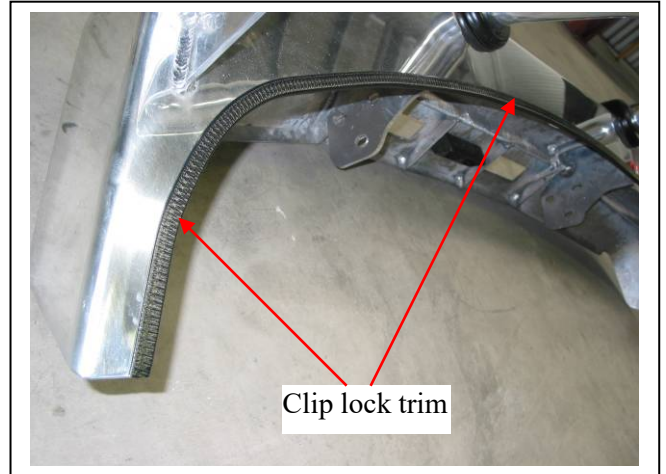


Figure 12



Figure 13: Front view



Figure 14: Side view



**WORLD'S BEST
ALLOY BULLBARS**

East Coast Bullbars (ECB Pty Ltd)

Tel: 07 3897 5700

Fax: 07 3283 1168

ecb@ecb.com.au www.ecb.com.au

29 Snook St
Clontarf QLD 4019
Australia

Po Box 122
Margate QLD 4019
Australia

We value your comments

Dear Fitter,

ECB would like to know how you went with the installation of this product. We value your comment and may need to contact you to clarify some details so please complete your contact details clearly.

We would appreciate if you could complete as many of the following details as possible.

Your Name:	Your contact No.
Product Part No.	Product Invoice No.
Product Description:	Make, model, and year of vehicle:
Product Work Order No.	Company your from/Company product purchased from:

Date of Fitment: ___ / ___ / ___

Was the fitting hardware supplied complete?

Yes

No

If no what was not supplied

Did the installation go well?

Yes

No

Please provide comments

Please draw diagrams if you need to.

Post to
Reply Paid 122
PO Box 122

Fax to
(07) 3283 1168

Margate QLD 4019



WORLD'S BEST
ALLOY BULLBARS

East Coast Bullbars (ECB Pty Ltd)

Tel: 07 3897 5700

Fax: 07 3283 1168

ecb@ecb.com.au www.ecb.com.au

29 Snook St
Clontarf QLD 4019
Australia

Po Box 122
Margate QLD 4019
Australia

DESPATCH CHECKLIST BV04SY

Work Order #		See other side off this page for photos of all mounts
Finish:		
Transport:		
Due Date:		

- OC.....1 – Steel bumper support
- OC.....1 – Pair steel chassis support brackets.
- OC.....2 – Pair steel radiator mounts
- BK.....1 – Bolt Kit.
- BK.....1 – ECB LED Indicator / Park light kit.
- BK.....1 – 2500mm length 6mm clip lock
- BK.....2 – 350mm length 6mm clip lock
- OC.....2 – ECB Overrides (**fitted to bar**)
- OC.....4 – Fog light trims (**fitted to bar**)
- OC.....3 – 6mm Air vents (**fitted to bar**)

Wrapper's initials / Checker initials

All parts checked and completed by:

Nut and bolts: _____ Date ___ / ___ / ___

Order control: _____ Date ___ / ___ / ___

Final wrap check: _____ Date ___ / ___ / ___



**WORLD'S BEST
ALLOY BULLBARS**

East Coast Bullbars (ECB Pty Ltd)

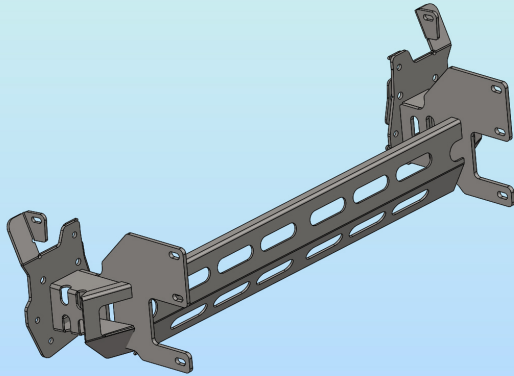
Tel: 07 3897 5700

Fax: 07 3283 1168

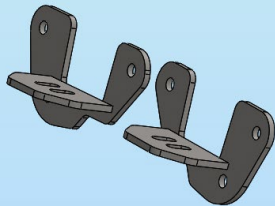
ecb@ecb.com.au www.ecb.com.au

29 Snook St
Clontarf QLD 4019
Australia

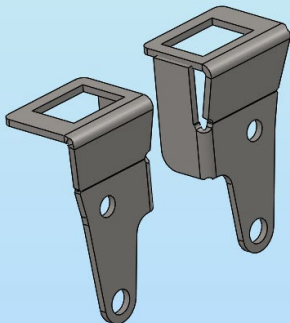
Po Box 122
Margate QLD 4019
Australia



Bumper support



Chassis support brackets



Radiator mounts

Wrapper's initials / Checker initials