



WORLD'S BEST
ALLOY BULLBARS

East Coast Bullbars (ECB Pty Ltd)

Tel: 07 3897 5700

Fax: 07 3283 1168

ecb@ecb.com.au www.ecb.com.au

29 Snook St
Clontarf QLD 4019
Australia

Po Box 122
Margate QLD 4019
Australia

BT98SY

REPLACES: 11.02.10
REVISED: 26.06.12

FITTING INSTRUCTIONS

TOYOTA 79 SERIES LANDCRUISER 3/07on BIG TUBE™ BAR VEHICLE FRONTAL PROTECTION SYSTEM (VFPS) FOR AIR BAG & ADR COMPLIANT VEHICLES

Check installation hardware before commencing.

1. Lift bonnet.
2. For vehicles with slim-line front bumper:
 - a. Remove light cover from rear of bumper, underside of driver's side wheel arch, one plastic clip. Disconnect lights. **See figure 1.**
 - b. Remove bumper cover. Four 10mm head bolts on underside of bumper, loosen only two 10mm head nuts under rear top corners, two 10mm head bolts at lower corners of bar grille and five plastic clips on top between bumper and grille.
 - c. Disconnect wiring from under headlamp.
 - d. Remove bumper support bracket, four 14mm bolts (per side), two bolts into side of chassis and two bolts into body support from front.
 - e. Remove two 17mm head bolts and nuts from front of chassis. Remove cross member support.
3. For vehicles with front bumper step:
 - a. Remove 17mm nut from end of chassis rail. Remove bolt from top of chassis rail. Bolt can be accessed from between top of chassis rail and crush can assembly. Space is limited so two fingers each side of chassis rail may be required. Fold bolt forward when hits top bumper skin to remove. **NOTE:** This is second 17mm from front of vehicle, not 17mm bolt in crush can assembly.
 - b. Remove inner two 14mm bolts from outrigger, near plastic light cover. **See figure 2 and 3.**
 - c. Disconnect light wiring from under drivers headlight during removal.

Note: This bar can be removed using instructions for slim-line bumper. Crush can assembly is an add-on to slim-line bumper mounting.
4. Fit ECB steel mounting brackets (supplied) to outside of chassis rails using two M10 x 25 bolts and flat and spring washers (supplied) and one ½ x 5 ½ bolt, nut and flat and spring washers (supplied) (per side). Align mounts and **TIGHTEN** ensuring correct distance between mounts for protection bar.
5. Disconnect indicator and parking lights on vehicle. Install ECB quick click wiring harnesses (supplied) between disconnected harness and indicator / park lights on vehicle. Run wiring out from under lights ensuring clearance from sharp edges and moving parts.
6. Attach 6mm clip lock trim (supplied) to rear top edge of ECB protection bar. **NOTE:** Trim off lower edge so trim will sit to end of protection bar. **See figures 4, 5 and 6.** **NOTE:** Seal any exposed edges of trim with silicone or similar to avoid corrosion of inner steel.



**WORLD'S BEST
ALLOY BULLBARS**

East Coast Bullbars (ECB Pty Ltd)

Tel: 07 3897 5700

Fax: 07 3283 1168

ecb@ecb.com.au www.ecb.com.au

29 Snook St
Clontarf QLD 4019
Australia

Po Box 122
Margate QLD 4019
Australia

7. Fit ECB LED indicator / park lights (supplied) into protection bar as per instructions supplied with the LED indicator kit. **NOTE: Ensure park light is to outside. See figure 7.**
8. Attach protection bar to inside of steel mounting brackets. Use six ½ x 1 ½ bolts, flat and spring washers and nuts (supplied). **DO NOT TIGHTEN.**
9. Align protection bar to vehicle allowing a minimum of 10mm between bar and body to give clearance for body movement. **See figure 8** for front view and **figure 9** for side view.
10. Connect indicator / park light wiring. **CHECK OPERATION.**

ENSURE NUMBER PLATE IS CLEARLY VISABLE

Note: When fitting/refitting the licence plate to the vehicle, ensure there is no obstruction to licence plate vision in accordance with local authorities. If required relocate licence plate to an alternate location.

Further VFPS Notes:

- a) Do not attach VFPS to the vehicle using anchorages not intended for this purpose (e.g. engine mounting bolts).
- b) Do not use this product for any vehicle make or model, other than those specified by the VFPS manufacturer.
- c) Do not remove the plaque or label from the VFPS.
- d) Do not modify the structure of the VFPS in any way.
- e) No accessory or fitment should project forward of the VFPS forward profile.
- f) **ENSURE THESE INSTRUCTIONS ARE LEFT WITH VEHICLE OWNER AND/OR OPERATOR.**

IMPORTANT INFORMATION

Periodically check bolts and nuts for correct tightness, especially if travelling on rough roads

FITTING KIT

2 – Steel mounting brackets.	1 – Quick Click Indi / Park kit (IC07LC79ECB100H)
6 – ½ x 1 ½ bolts.	4 - M10 x 1.25 x .25 bolts
2 – ½ x 5 ½ bolts.	4 – M10 flat washers.
8 – ½ nuts	4 – M10 spring washers
16 – ½ flat washers.	4 – M10 spring washers
8 – ½ spring washers.	1 – 2100mm length of 6mm clip lock trim
1 – ECB LED Indicator / Park light kit	



East Coast Bullbars (ECB Pty Ltd)

Tel: 07 3897 5700

Fax: 07 3283 1168

ecb@ecb.com.au www.ecb.com.au

WORLD'S BEST
ALLOY BULLBARS

29 Snook St
Clontarf QLD 4019
Australia

Po Box 122
Margate QLD 4019
Australia

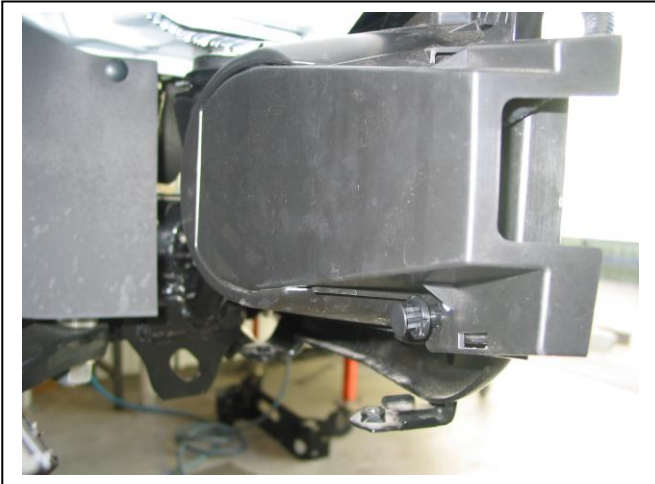
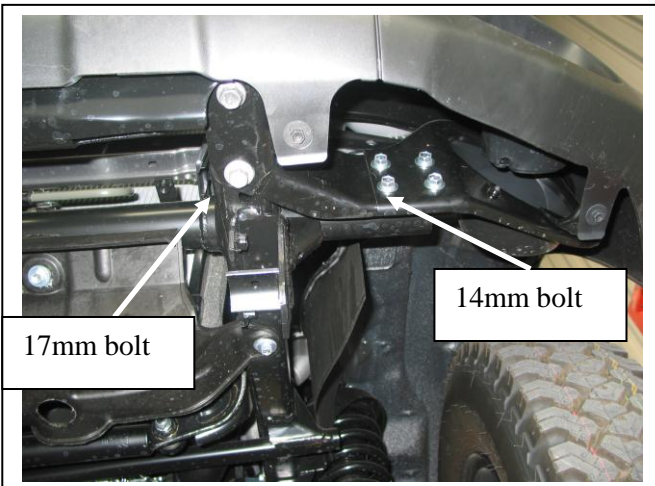


Figure 1 – Driver's side rear of slim-line bumper shown



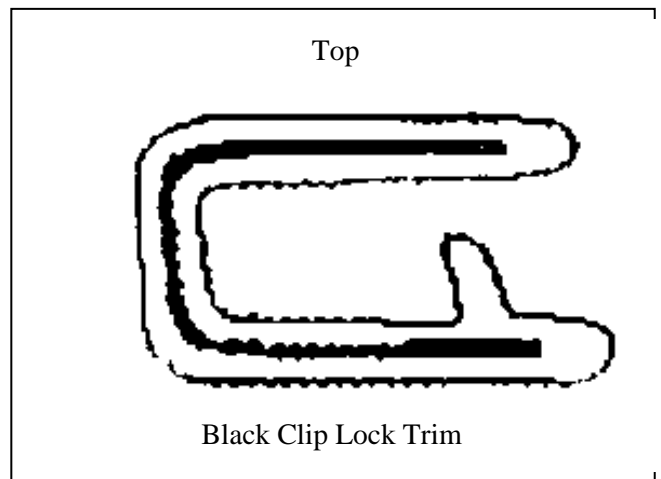
Figure 2 – Vehicle with step bumper.



17mm bolt

14mm bolt

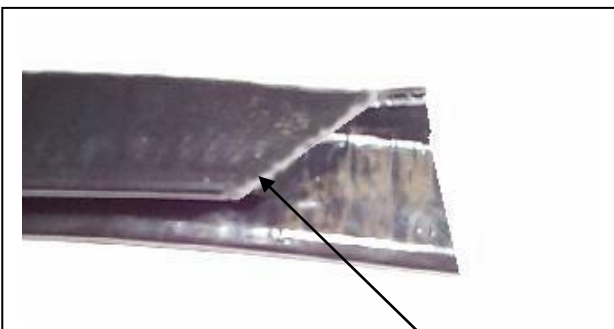
Figure 3 – Bolts to be removed for step bumper.



Top

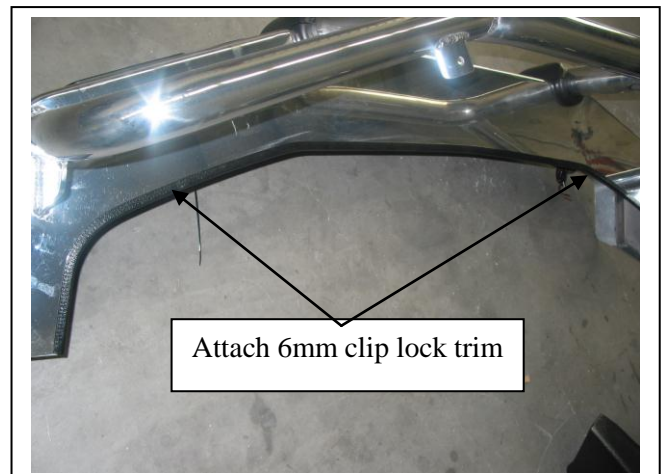
Black Clip Lock Trim

Figure 4



Trim lower edge on an angle

Figure 5



Attach 6mm clip lock trim

Figure 6



East Coast Bullbars (ECB Pty Ltd)

Tel: 07 3897 5700

Fax: 07 3283 1168

ecb@ecb.com.au www.ecb.com.au

WORLD'S BEST
ALLOY BULLBARS

29 Snook St
Clontarf QLD 4019

Australia

Po Box 122
Margate QLD 4019

Australia

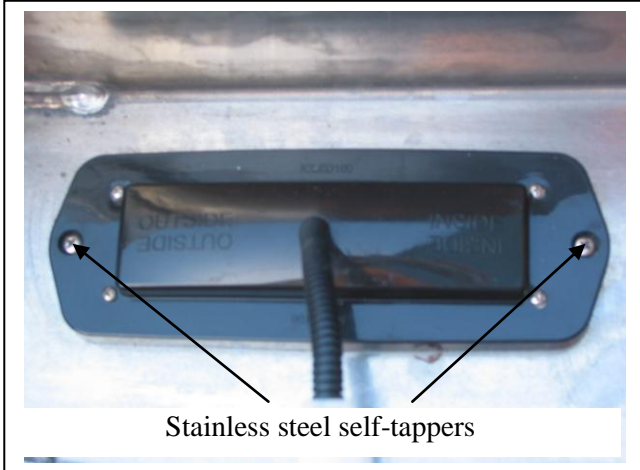


Figure 7



Figure 8– Front view shown (BT97SY)



Figure 9 – Side view shown



**WORLD'S BEST
ALLOY BULLBARS**

East Coast Bullbars (ECB Pty Ltd)

Tel: 07 3897 5700

Fax: 07 3283 1168

ecb@ecb.com.au www.ecb.com.au

29 Snook St
Clontarf QLD 4019
Australia

Po Box 122
Margate QLD 4019
Australia

We value your comments

Dear Fitter,

ECB would like to know how you went with the installation of this product. We value your comment and may need to contact you to clarify some details so please complete your contact details clearly.

We would appreciate if you could complete as many of the following details as possible.

Your Name:	Your contact No.
Product Part No.	Product Invoice No.
Product Description:	Make, model, and year of vehicle:
Product Work Order No.	Company your from/Company product purchased from:

Date of Fitment: ____/____/____

Was the fitting hardware supplied complete?

Yes

No

If no what was not supplied

Did the installation go well?

Yes

No

Please provide comments

Please draw diagrams if you need to.

Post to
Reply Paid 122
PO Box 122
Margate QLD 4019

Fax to
(07) 3283 1168



**WORLD'S BEST
ALLOY BULLBARS**

East Coast Bullbars (ECB Pty Ltd)

Tel: 07 3897 5700

Fax: 07 3283 1168

ecb@ecb.com.au www.ecb.com.au

29 Snook St
Clontarf QLD 4019
Australia

Po Box 122
Margate QLD 4019
Australia



WORLD'S BEST
ALLOY BULLBARS

East Coast Bullbars (ECB Pty Ltd)

Tel: 07 3897 5700

Fax: 07 3283 1168

ecb@ecb.com.au www.ecb.com.au

29 Snook St
Clontarf QLD 4019
Australia

Po Box 122
Margate QLD 4019
Australia

DESPATCH CHECKLIST BT98SY

Work Order #	
Finish:	
Transport:	
Due Date:	

**See other side of
this page for
photos of all
mounts**

- 2 – Steel mounting brackets.
- 1 – Bolt Kit.
- 1 – ECB LED Indicator / Park light kit.
- 1 – Quick Click Indi / Park kit (IC07LC79ECB100H)
- 1 – 2100mm length 6mm clip lock.
- 2 – ECB overrides – **Fitted to bar.**
- 6 – 6mm air scoops – **Fitted to bar.**



Is this product “the best it can be” Yes _____ / _____
Wrapper’s initials / Checker initials

If **NO** fix before continuing

All parts checked and completed by:

Nut and bolts: _____ Date __/__/__

Order control: _____ Date __/__/__

Final wrap check: _____ Date __/__/__



**WORLD'S BEST
ALLOY BULLBARS**

East Coast Bullbars (ECB Pty Ltd)

Tel: 07 3897 5700

Fax: 07 3283 1168

ecb@ecb.com.au www.ecb.com.au

29 Snook St
Clontarf QLD 4019
Australia

Po Box 122
Margate QLD 4019
Australia

