



**WORLD'S BEST  
ALLOY BULLBARS**

**East Coast Bullbars (ECB Pty Ltd)**

Tel: 07 3897 5700

Fax: 07 3283 1168

ecb@ecb.com.au www.ecb.com.au

29 Snook St  
Clontarf QLD 4019

Australia

Po Box 122  
Margate QLD 4019  
Australia

**BT96SY**

REPLACES: 26.06.12

REVISED: 23.11.22

## **FITTING INSTRUCTIONS**

### **TOYOTA 79 SERIES LANDCRUISER 3/07- BIG TUBE™ WINCH COMPATIBLE BAR WITH FOG LAMPS VEHICLE FRONTAL PROTECTION SYSTEM (VFPS) FOR AIR BAG & ADR COMPLIANT VEHICLES**

Check installation hardware before commencing.

1. Lift bonnet.
2. For vehicles with slim-line front bumper:
  - a. Remove light cover from rear of bumper, underside of driver's side wheel arch, one plastic clip. Disconnect lights. **See figure 3.**
  - b. Remove bumper cover. Four 10mm head bolts on underside of bumper, loosen only two 10mm head nuts under rear top corners, two 10mm head bolts at lower corners of bar grille and five plastic clips on top between bumper and grille.
  - c. Disconnect wiring from under headlamp.
  - d. Remove bumper support bracket, four 14mm bolts (per side), two bolts into side of chassis and two bolts into body support from front.
  - e. Remove two 17mm head bolts and nuts from front of chassis. Remove cross member support.
3. For vehicles with front bumper step:
  - a. Remove 17mm nut from end of chassis rail. Remove bolt from top of chassis rail. Bolt can be accessed from between top of chassis rail and crush can assembly. Space is limited so two fingers each side of chassis rail may be required. Fold bolt forward when hits top bumper skin to remove. **NOTE:** This is second 17mm from front of vehicle, not 17mm bolt in crush can assembly.
  - b. Remove inner two 14mm bolts from outrigger, near plastic light cover. **See figure 1 and 2.**
  - c. Disconnect light wiring from under drivers headlight during removal.

**Note:** This bar can be removed using instructions for slim-line bumper. Crush can assembly is an add-on to slim-line bumper mounting.
4. Remove fog lamp wiring from rear of bumper cover if fitted (only wiring from bumper cover required). Refit wiring to front of vehicle radiator support panel using cable ties (supplied). Connect wiring to connector under headlamp. **See figures 4, 5 and 6.**  
**NOTE:** For vehicles without original fog lamps, wire accessory fog lamp kit to vehicle (not supplied).
5. Fit ECB steel mounting brackets (supplied) to outside of chassis rails using two M10 x 1.25 x 25 bolts, flat and spring washers (supplied). **FINGER TIGHTEN ONLY.**
6. Place winch mounting bracket (supplied) between lower sections of steel mounting brackets. Using one ½ x 1 ½ bolt, nut and flat and spring washers (supplied) secure through rear hole into steel mounting bracket. **FINGER TIGHTEN ONLY.**



**WORLD'S BEST  
ALLOY BULLBARS**

**East Coast Bullbars (ECB Pty Ltd)**

Tel: 07 3897 5700

Fax: 07 3283 1168

ecb@ecb.com.au www.ecb.com.au

29 Snook St  
Clontarf QLD 4019  
Australia

Po Box 122  
Margate QLD 4019  
Australia

7. Using one ½ x 5 ½ bolt, nut, flat and spring washers (supplied) fit winch support bracket, **see figure 7**, to top front of chassis rail, to front hole of winch mount. Attach winch mount using one ½ x 1 ½ bolts, nuts, flat and spring washers (supplied) (per side). **See figure 7.**
8. Align and tighten steel mounting brackets, ensuring correct distance between mounts for protection bar and winch mount is central between mounts.
9. Align winch bracket and **TIGHTEN ALL BOLTS.**
10. Fit fairlead rollers using original winch 7/16 x 1 bolt, nut and washer. Feed 7/16 x 1 bolt, washer from inside. Attach nut and washer on outside. **FINGER TIGHTEN ONLY.**
11. For XP9000 Warn Winch only: - Grind front 100mm from front edge for driver's side tow bracket. Treat all exposed metal with a rust inhibitor. **See figure 8.**
12. Fit winch to winch frame using original 3/8 x 1 ¼ bolts and spring washer with 3/8 flat washer (supplied). Ensure winch is cable is pulled through fairlead as installing.
13. Fit winch control box to control box mount (supplied). For XD9000 use front holes and for XP9000 use side holes. **See figure 9.** Wire control box to winch as per winch instructions. Fit control box to driver's side steel mounting bracket using three ¼ x 1 bolts, nuts, flat and spring washers (supplied) **TIGHTEN ALL BOLTS. See figure 10.**
14. Disconnect indicator and parking lights on vehicle. Install ECB quick click wiring harnesses (supplied) between disconnected harness and indicator / park lights on vehicle. Run wiring out from under lights ensuring clearance from sharp edges and moving parts.
15. Connect ECB Quick Click fog light wiring harness (supplied) into original wiring harness.
16. Attach 6mm clip lock trim (supplied) to rear top edge of ECB protection bar. **NOTE:** Trim off lower edge so trim will sit to end of protection bar. **See figures 12, 13 and 14. NOTE:** Seal any exposed edges of trim with silicone or similar to avoid corrosion of inner steel.
17. Attach 6mm clip lock trim (supplied) to each side of roller fairlead cut out. **See figure 12.** Seal any exposed edges of trim with silicone or similar to avoid corrosion of inner steel.
18. Fit ECB LED indicator / park lights (supplied) into protection bar as per instructions supplied with the LED indicator kit. **NOTE: Ensure park light is to outside. See figure 15.**
19. Attach ECB fog lights to protection bar. Place M6 x 20 bolts, spring washers (supplied) through light mount from inside and attach nut to top. Slide assembly into light mount in Protection bar and centralize light to hole. **See figure 16. TIGHTEN ALL BOLTS FIRM ONLY. Do not fit fog light trims at this stage.**
20. Attach protection bar to inside of steel mounting brackets. Use six ½ x 1 ½ bolts, nuts, flat and spring washers (supplied). **DO NOT TIGHTEN.**
21. Align protection bar to vehicle allowing a minimum of 10mm between bar and body to give clearance for body movement. See **figure 17** for front view and **figure 18** for side view.
22. Connect indicator / park light wiring. **CHECK OPERATION.**
23. Connect fog lights. **CHECK OPERATION.** Aim with low beam, **TIGHTEN IN POSITION.** Fit ECB fog light trims (supplied) to protection bar, wider part of trim to inside.



**WORLD'S BEST  
ALLOY BULLBARS**

**East Coast Bullbars (ECB Pty Ltd)**

Tel: 07 3897 5700

Fax: 07 3283 1168

ecb@ecb.com.au www.ecb.com.au

29 Snook St  
Clontarf QLD 4019  
Australia

Po Box 122  
Margate QLD 4019  
Australia

24. Test winch for correct operation.

### **ENSURE NUMBER PLATE IS CLEARLY VISABLE**

**Note:** When fitting/refitting the licence plate to the vehicle, ensure there is no obstruction to licence plate vision in accordance with local authorities. If required relocate licence plate to an alternate location.

#### **Further VFPS Notes:**

- a) Do not attach VFPS to the vehicle using anchorages not intended for this purpose (e.g. engine mounting bolts).
- b) Do not use this product for any vehicle make or model, other than those specified by the VFPS manufacturer.
- c) Do not remove the plaque or label from the VFPS.
- d) Do not modify the structure of the VFPS in any way.
- e) No accessory or fitment should project forward of the VFPS forward profile.
- f) **ENSURE THESE INSTRUCTIONS ARE LEFT WITH VEHICLE OWNER AND/OR OPERATOR.**

### **IMPORTANT INFORMATION**

Periodically check bolts and nuts for correct tightness, especially if travelling on rough roads

### **FITTING KIT**

2 – Steel mounting brackets.	10 – ¼ flat washers.
1 – Steel winch frame.	2 – ¼ nuts.
2 – Winch frame supports.	1 – ECB LED Indicator / Park light kit
1 – Control box mount.	1 – Quick Click Indi / Park kit (IC07LC79ECB100H)
10 – ½ x 1 ½ bolts.	1 – Pair ECB fog lamps.
2 – ½ x 5 ½ bolts.	1 – Quick Click fog wiring kit (IC07LC791004ECBH)
12 – ½ nuts	2 – M6 x 20 bolts.
24 – ½ flat washers.	2 – M6 nuts
12 – ½ spring washers.	2 – M6 flat washers.
4 – M10 x 1.25 x 25 bolts.	2 – M6 spring washers.
8 – M10 flat washers.	2 – Fog lamp trims
4 – M10 spring washers.	1 – 2100mm length of 6mm clip lock trim
3 – ¼ x 1 bolts.	2 – 130mm lengths of 6mm clip lock trim.
3 – ¼ nyloc nuts.	4 – Zip ties.



East Coast Bullbars (ECB Pty Ltd)

Tel: 07 3897 5700

Fax: 07 3283 1168

ecb@ecb.com.au www.ecb.com.au

WORLD'S BEST  
ALLOY BULLBARS

29 Snook St  
Clontarf QLD 4019  
Australia

Po Box 122  
Margate QLD 4019  
Australia

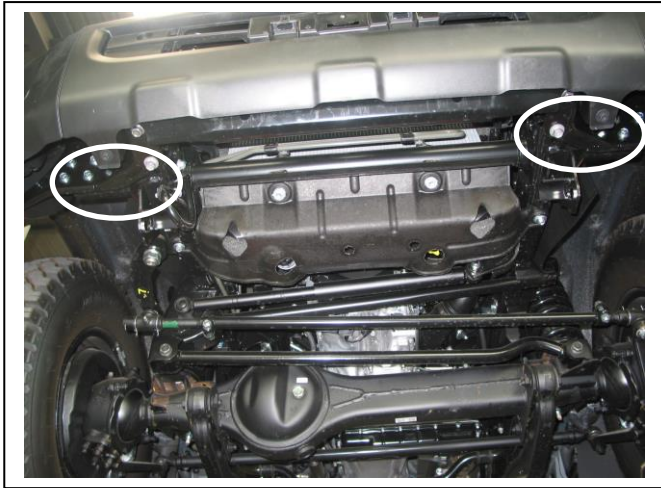


Figure 1 – Vehicle with step bumper.

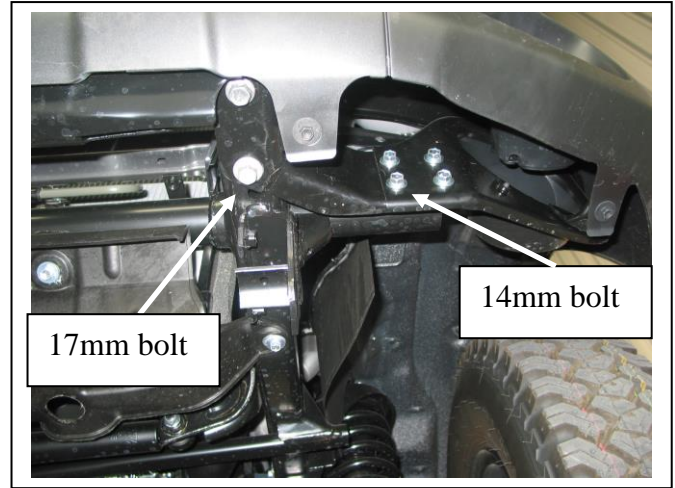


Figure 2 – Bolts to be removed for step bumper.

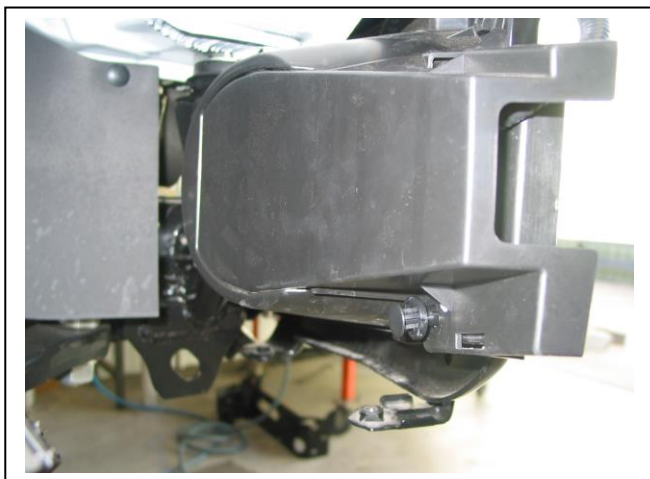


Figure 1 – Driver's side rear of bumper shown

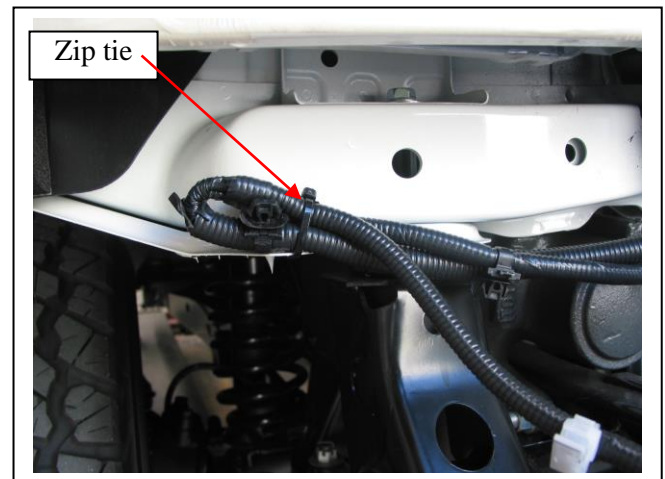


Figure 2 – Driver's side shown

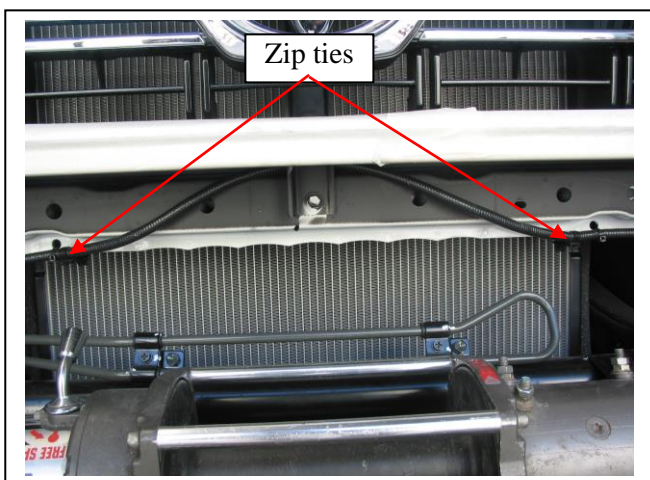


Figure 3 – Centre shown

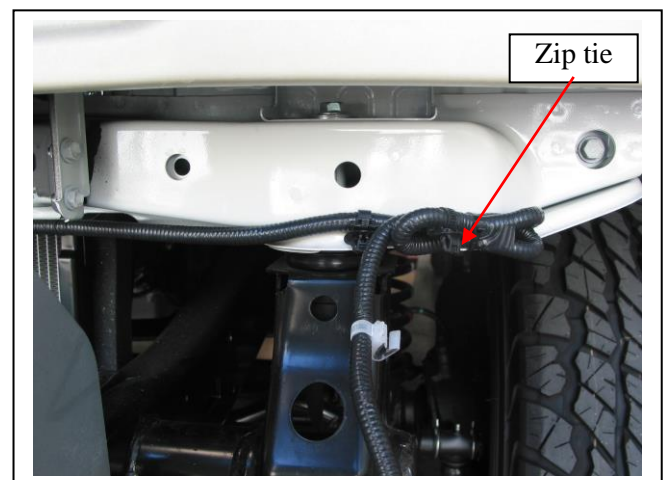


Figure 4 – Passenger side shown





WORLD'S BEST  
ALLOY BULLBARS

East Coast Bullbars (ECB Pty Ltd)

Tel: 07 3897 5700

Fax: 07 3283 1168

ecb@ecb.com.au www.ecb.com.au

29 Snook St  
Clontarf QLD 4019  
Australia

Po Box 122  
Margate QLD 4019  
Australia

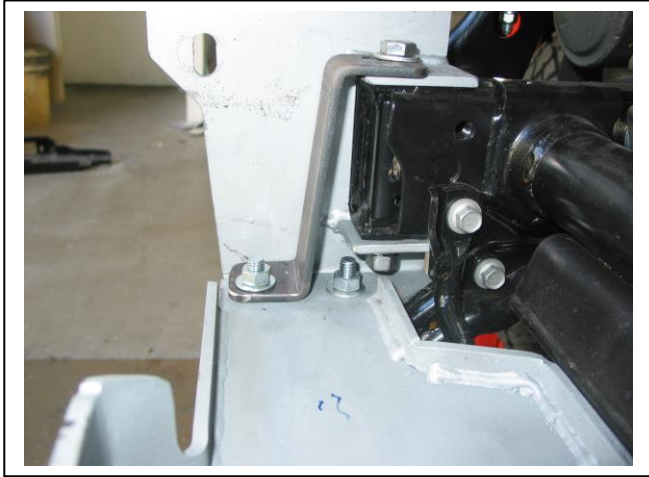
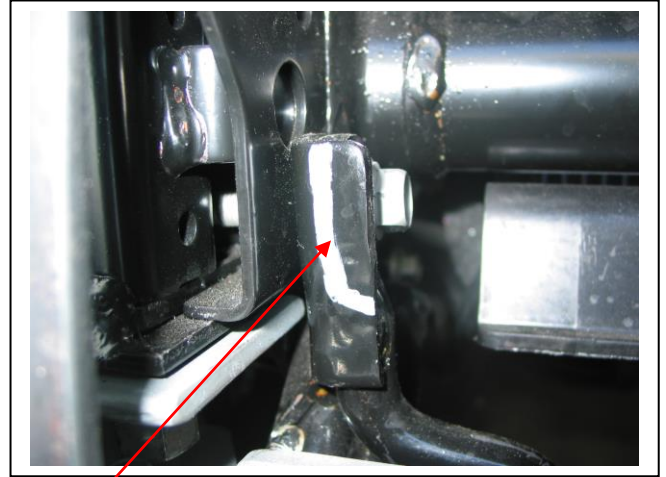


Figure 5 – Driver's side shown



Trim line Figure 6 – XP9000 only



Figure 7 – Control box mount shown



Figure 8

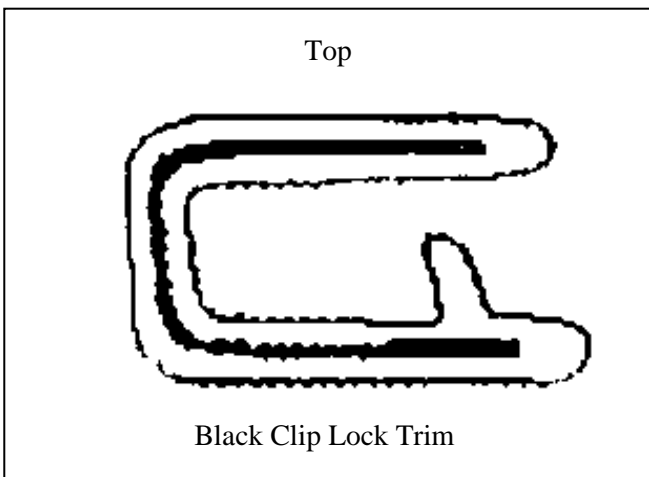


Figure 9

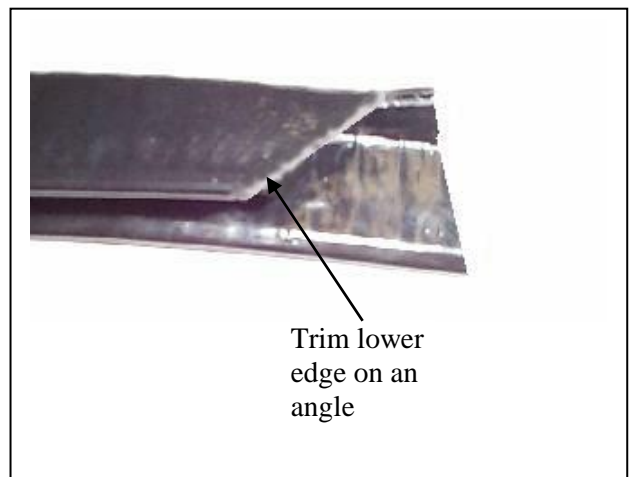


Figure 10



East Coast Bullbars (ECB Pty Ltd)

Tel: 07 3897 5700

Fax: 07 3283 1168

ecb@ecb.com.au www.ecb.com.au

WORLD'S BEST  
ALLOY BULLBARS

29 Snook St  
Clontarf QLD 4019  
Australia

Po Box 122  
Margate QLD 4019  
Australia

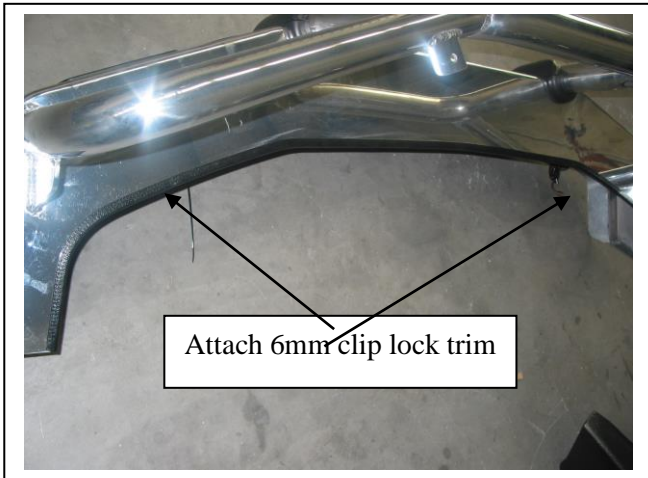


Figure 11

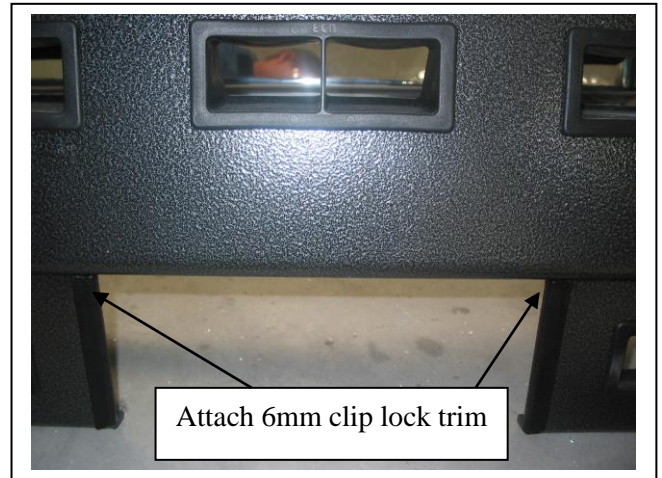


Figure 12

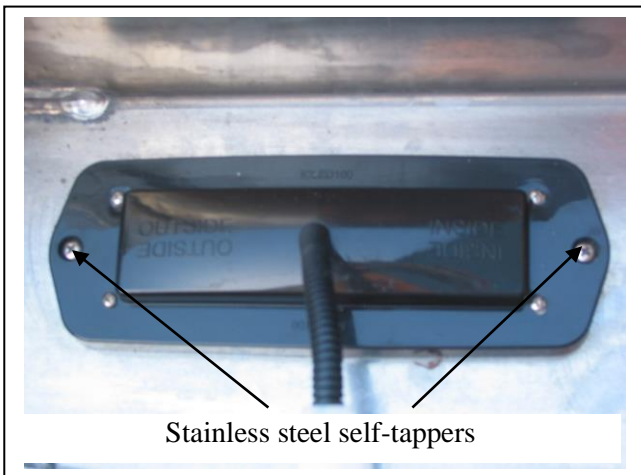
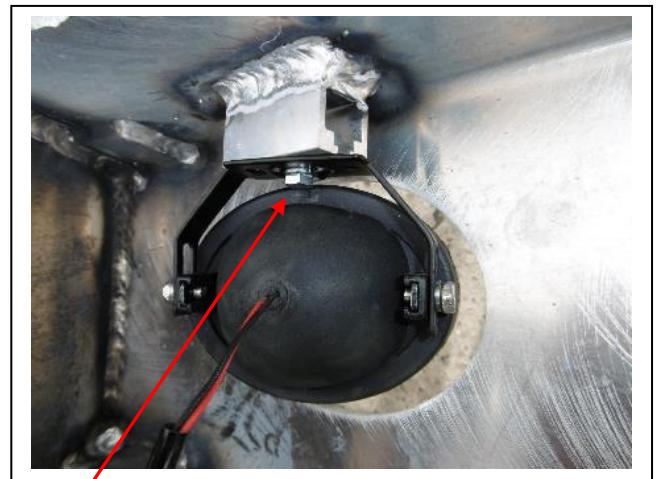


Figure 13



M6 bolt

Figure 14



Figure 15 – Front view shown



Figure 16 – Side view shown





**WORLD'S BEST  
ALLOY BULLBARS**

**East Coast Bullbars (ECB Pty Ltd)**

Tel: 07 3897 5700

Fax: 07 3283 1168

[ecb@ecb.com.au](mailto:ecb@ecb.com.au) [www.ecb.com.au](http://www.ecb.com.au)

29 Snook St  
Clontarf QLD 4019  
Australia

Po Box 122  
Margate QLD 4019  
Australia





WORLD'S BEST ALLOY BULLBARS

East Coast Bullbars (ECB Pty Ltd)

Tel: 07 3897 5700

Fax: 07 3283 1168

ecb@ecb.com.au www.ecb.com.au

29 Snook St  
Clontarf QLD 4019

Australia

Po Box 122  
Margate QLD 4019

Australia

# DESPATCH CHECKLIST BT96SY

ICZBKCT96

\* I CZBKCT96\*

Work Order #	
Finish:	
Transport:	
Due Date:	

- O2 – Steel mounting brackets.
- O1 – Steel winch frame.
- O2 – Winch frame supports.
- O1 – Control box mount.
- O1 – Bolt Kit.
- O1 – ECB LED Indicator / Park light kit.
- O1 – Quick Click Indi / Park kit (IC07LC79ECB100H)
- O1 – Pair ECB fog lights.
- O1 – Quick Click fog wiring kit (IC07LC791004ECBH)
- O2 – ECB fog light trims.
- O1 – 2100mm length 6mm clip lock.
- O2 – 130mm lengths 6mm clip lock.
- O2 – ECB overrides – **Fitted to bar.**
- O5 – 6mm air scoops – **Fitted to bar.**

**See other side of  
this page for  
photos of all  
mounts**



Is this product “the best it can be” Yes \_\_\_\_\_ / \_\_\_\_\_  
Wrapper’s initials / Checker initials

If **NO** fix before continuing

All parts checked and completed by:

Nut and bolts: \_\_\_\_\_ Date \_\_/\_\_/\_\_

Order control: \_\_\_\_\_ Date \_\_/\_\_/\_\_

Final wrap check: \_\_\_\_\_ Date \_\_/\_\_/\_\_



East Coast Bullbars (ECB Pty Ltd)

Tel: 07 3897 5700

Fax: 07 3283 1168

ecb@ecb.com.au www.ecb.com.au

29 Snook St  
Clontarf QLD 4019  
Australia

Po Box 122  
Margate QLD 4019  
Australia

WORLD'S BEST  
ALLOY BULLBARS

