



**WORLD'S BEST
ALLOY BULLBARS**

East Coast Bullbars (ECB Pty Ltd)

Tel: 07 3897 5700

Fax: 07 3283 1168

ecb@ecb.com.au www.ecb.com.au

29 Snook St
Clontarf QLD 4019
Australia

Po Box 122
Margate QLD 4019
Australia

BT71SY

REPLACES: 09.07.10

REVISED: 16.01.24

FITTING INSTRUCTIONS

TOYOTA PRADO 11/99–2/03 BIG TUBE™ BULLBAR (RETAINS OE BUMPER LIGHTS) VEHICLE FRONTAL PROTECTION SYSTEM (VFPS) FOR AIR BAG AND ADR COMPLIANT VEHICLES

Check installation hardware before commencing.

1. Remove bumper bar and radiator grille.
2. Remove spotlights from bumper bar, and retain original bolts.
3. Paint exposed panels black. **See figure 1.**
4. Tie plastic inner guards forward to hole in body panel. Use zip ties (supplied). **See figure 1.**
5. Insert 6mm black clip lock trim to light openings in ECB bar.
 - Step 1:** The clip lock trim has a flat and rolled inner edges, the flat edge is to be set on the front of the bar, as this will maximise the finished appearance.
 - Step 2:** Begin by pressing the clip lock trim into the opening from the bottom/middle. To aid the pressing into the corners of the opening, have the clip lock trim bent to a similar profile as the corner and position the clip lock trim inside of the opening. Firm manipulation of the clip lock trim is required into the corners. As you get to the fourth corner go back through all the edges and corners to ensure a bottoming out of the clip lock trim. You are now ready to complete the last corner and bottom edge fit up.
 - Step 3:** When you have the bottom edge sticking out towards the centre of the opening, gently pull the other bottom half edge out till the corner starts to lift. With both hands match the half ends together as you insert the clip lock trim onto the opening edge. The clip lock trim will come together neatly providing you have worked the clip lock firmly onto the edges and corners. (Trim edges with side cutters to match up)
6. Loosely bolt the two cleats (tongue to the top of the bar, facing inwards) onto the inside angle brackets using one M5 x 12 bolts/washers/nylock nuts (supplied) on the lower position and pivot clear. **See figure 4.** Insert lights (left to left etc) over the opening, using the original bolts, loosely bolt the lights to the upright mounts. Move the side cleat tongue over the inside lip of the light housing. Insert top M5 x 12 bolts/washers and nylock nuts (supplied). **See figure 5. Ensure lights are firm in bar against clip lock trim.** All the bolts can be tightened. The beam alignment will require adjustment. This is done by- on the bottom outside of the light there is an adjustment screw. Turn this screw to bring the lens downwards (looking into the lens). If further adjustment is required, doing so can be done on the vehicle. Simply loosen all light attachment bolts and rotate the light housing (touching at the top) back at the bottom to the position you require and retighten.

NOTE: Periodic checking to ensure lights are held firm may be necessary – Especially in rough corrugated road use.
7. Loosely attach steel mounts (supplied) to chassis rail, use M10 x 35 x 1.25 bolts (supplied), ensuring the angle brackets are resting on top of the chassis. Clamp the steel mounts to the chassis; use the clamp plates (supplied) and the 3/8 x 4 1/2 bolts (supplied). **TIGHTEN ALL BOLTS. See figure 2 and 3.**

NOTE: Extra plates welded on inside of steel mounting brackets are used for winch fitment only.
8. Attach infill trim (supplied) to top of ECB protection bar. **NOTE:** Trim 30mm off lower edge so trim will sit over end of protection bar. **See figures 6 and 7. Trim excess off end to follow protection bar. See figure 8. NOTE:** Seal any exposed edges of trim with silicone or similar to avoid corrosion of inner steel.
9. Position ECB protection bar on the steel mounting brackets. Use 1/2 x 1 1/2 bolts and nuts (supplied). **DO NOT TIGHTEN.**



**WORLD'S BEST
ALLOY BULLBARS**

East Coast Bullbars (ECB Pty Ltd)

Tel: 07 3897 5700

Fax: 07 3283 1168

ecb@ecb.com.au www.ecb.com.au

29 Snook St
Clontarf QLD 4019
Australia

Po Box 122
Margate QLD 4019
Australia

10. Align ECB protection bar in desired position with vehicle. **TIGHTEN ½ x 1 ½ BOLTS/NUTS TO 100 FT/LBS. See figure 9** for side view.
11. Reconnect light harness into rear of spotlights.
12. Refit radiator grille.

ENSURE NUMBER PLATE IS CLEARLY VISABLE

Note: When fitting/refitting the licence plate to the vehicle, ensure there is no obstruction to licence plate vision in accordance with local authorities. If required relocate licence plate to an alternate location.

Further VFPS Notes:

- a) Do not attach VFPS to the vehicle using anchorages not intended for this purpose (e.g. engine mounting bolts).
- b) Do not use this product for any vehicle make or model, other than those specified by the VFPS manufacturer.
- c) Do not remove the plaque or label from the VFPS.
- d) Do not modify the structure of the VFPS in any way.
- e) No accessory or fitment should project forward of the VFPS forward profile.
- f) **ENSURE THESE INSTRUCTIONS ARE LEFT WITH VEHICLE OWNER AND/OR OPERATOR.**

IMPORTANT INFORMATION

Periodically check bolts and nuts for correct tightness, especially if travelling on rough roads

FITTING KIT

2 – Steel mounting brackets.	8 – 3/8 spring washers.
2 – Steel clamp plates.	8 – 3/8 flat washers.
2 – Aluminium cleats.	6 – ½ x 1 ½ bolts/nuts.
4 – M5 x 12mm bolts.	6 – ½ spring washers.
4 – M5 nylock nuts.	12 – ½ flat washers
8 – M5 flat washers.	2 – 600mm lengths 6mm black clip lock trim.
4 – M10 x 35 x 1.25 bolts.	1 – 2220mm long 6mm black infill trim.
4 – 3/8 x 4 ½ bolts.	2 – 150mm long black zip ties.

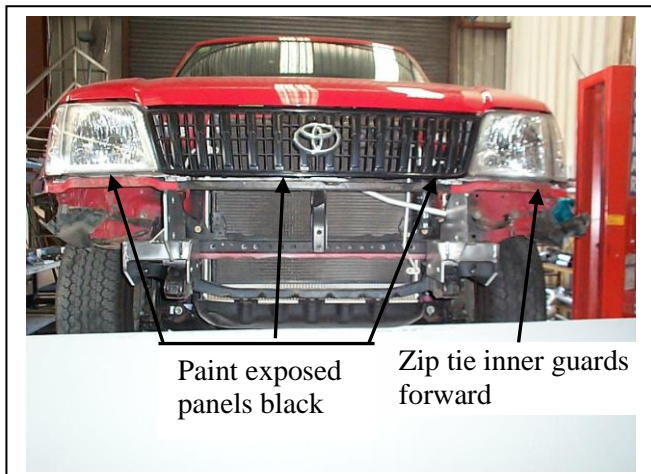


Figure 1

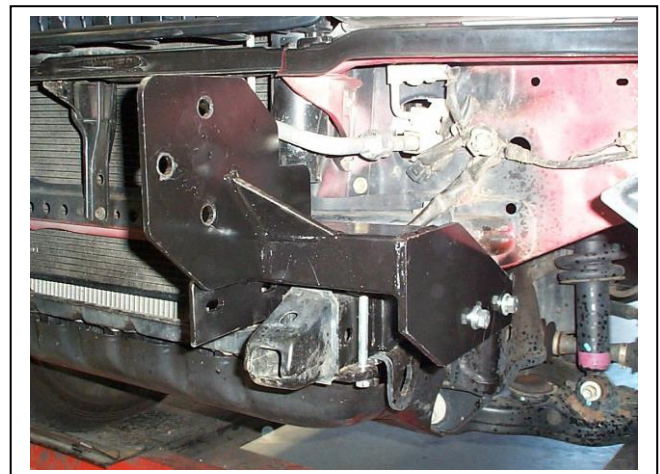


Figure 2 – Passenger side shown



East Coast Bullbars (ECB Pty Ltd)

Tel: 07 3897 5700

Fax: 07 3283 1168

ecb@ecb.com.au www.ecb.com.au

29 Snook St
Clontarf QLD 4019
Australia

Po Box 122
Margate QLD 4019
Australia

WORLD'S BEST
ALLOY BULLBARS



Figure 3 – Drivers side



Figure 4



Figure 5

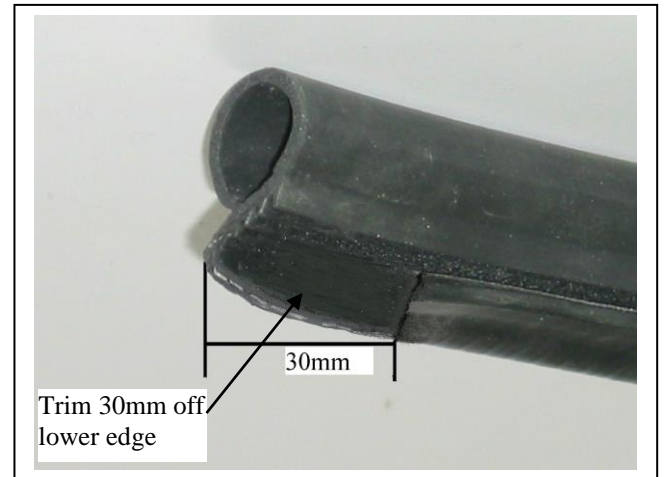


Figure 6

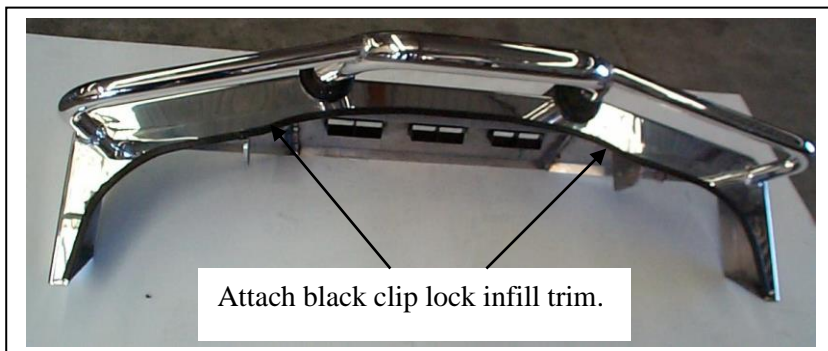


Figure 7



**WORLD'S BEST
ALLOY BULLBARS**

East Coast Bullbars (ECB Pty Ltd)

Tel: 07 3897 5700

Fax: 07 3283 1168

ecb@ecb.com.au www.ecb.com.au

29 Snook St
Clontarf QLD 4019
Australia

Po Box 122
Margate QLD 4019
Australia

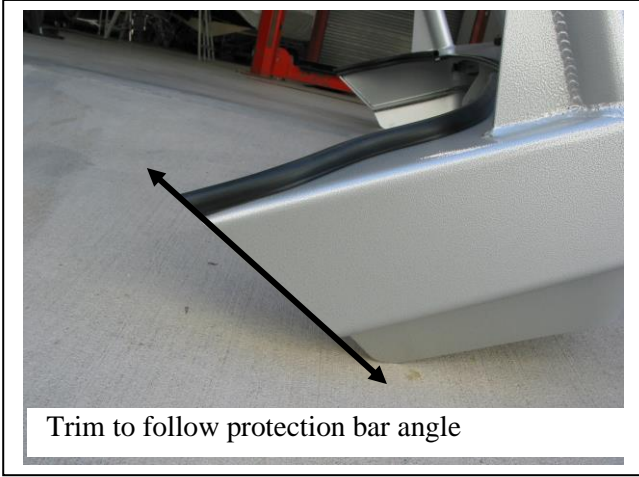


Figure 8

Note: Example only angle on bar maybe different to the above



Figure 9



**WORLD'S BEST
ALLOY BULLBARS**

East Coast Bullbars (ECB Pty Ltd)

Tel: 07 3897 5700

Fax: 07 3283 1168

ecb@ecb.com.au www.ecb.com.au

29 Snook St
Clontarf QLD 4019
Australia

Po Box 122
Margate QLD 4019
Australia

We value your comments

Dear Fitter,

ECB would like to know how you went with the installation of this product. We value your comment and may need to contact you to clarify some details so please complete your contact details clearly.

We would appreciate if you could complete as many of the following details as possible.

Your Name:	Your contact No.
Product Part No.	Product Invoice No.
Product Description:	Make, model, and year of vehicle:
Product Work Order No.	Company your from/Company product purchased from:

Date of fitment: ____/____/____

Was the fitting hardware supplied complete?

Yes

No

If no what was not supplied

Did the installation go well?

Yes

No

Please provide comments

Please draw diagrams if you need to.

Post to

Reply Paid 122

PO Box 122

Margate QLD 4019

Fax to

(07) 3283 1168



**WORLD'S BEST
ALLOY BULLBARS**

East Coast Bullbars (ECB Pty Ltd)

Tel: 07 3897 5700

Fax: 07 3283 1168

ecb@ecb.com.au www.ecb.com.au

29 Snook St
Clontarf QLD 4019
Australia

Po Box 122
Margate QLD 4019
Australia



WORLD'S BEST
ALLOY BULLBARS

East Coast Bullbars (ECB Pty Ltd)

Tel: 07 3897 5700

Fax: 07 3283 1168

ecb@ecb.com.au www.ecb.com.au

29 Snook St
Clontarf QLD 4019
Australia

Po Box 122
Margate QLD 4019
Australia

DESPATCH CHECKLIST BT71SY

ICZBKCT71

* I CZBKCT71*

Work Order #	
Finish:	
Transport:	
Due Date:	

- 2 – Steel mounting brackets.
- 2 – Steel clamp plates (in bolt kit).
- 2 – Aluminium cleats. (BT71SY_C3AL)
- 1 – Bolt Kit.
- 2 – 600mm lengths 6mm clip lock.
- 1 – 2220mm length 6mm black **infill** trim.
- 2 – ECB overrides – **Fitted to bar.**
- 2 – 6mm air scoops – **Fitted to bar.**
- 3 – 3mm air scoops – **Fitted to bar.**

**See other side of
this page for
photos of all
mounts**



Is this product “the best it can be” Yes _____/_____

Wrapper's initials / Checker initials

If **NO** fix before continuing

All parts checked and completed by:

Nut and bolts: _____ Date __/__/__

Order control: _____ Date __/__/__

Final wrap check: _____ Date __/__/__



East Coast Bullbars (ECB Pty Ltd)

Tel: 07 3897 5700

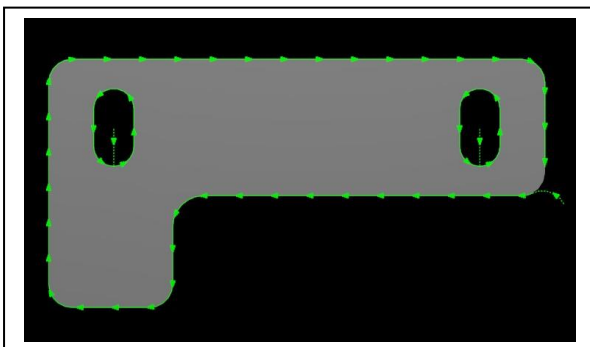
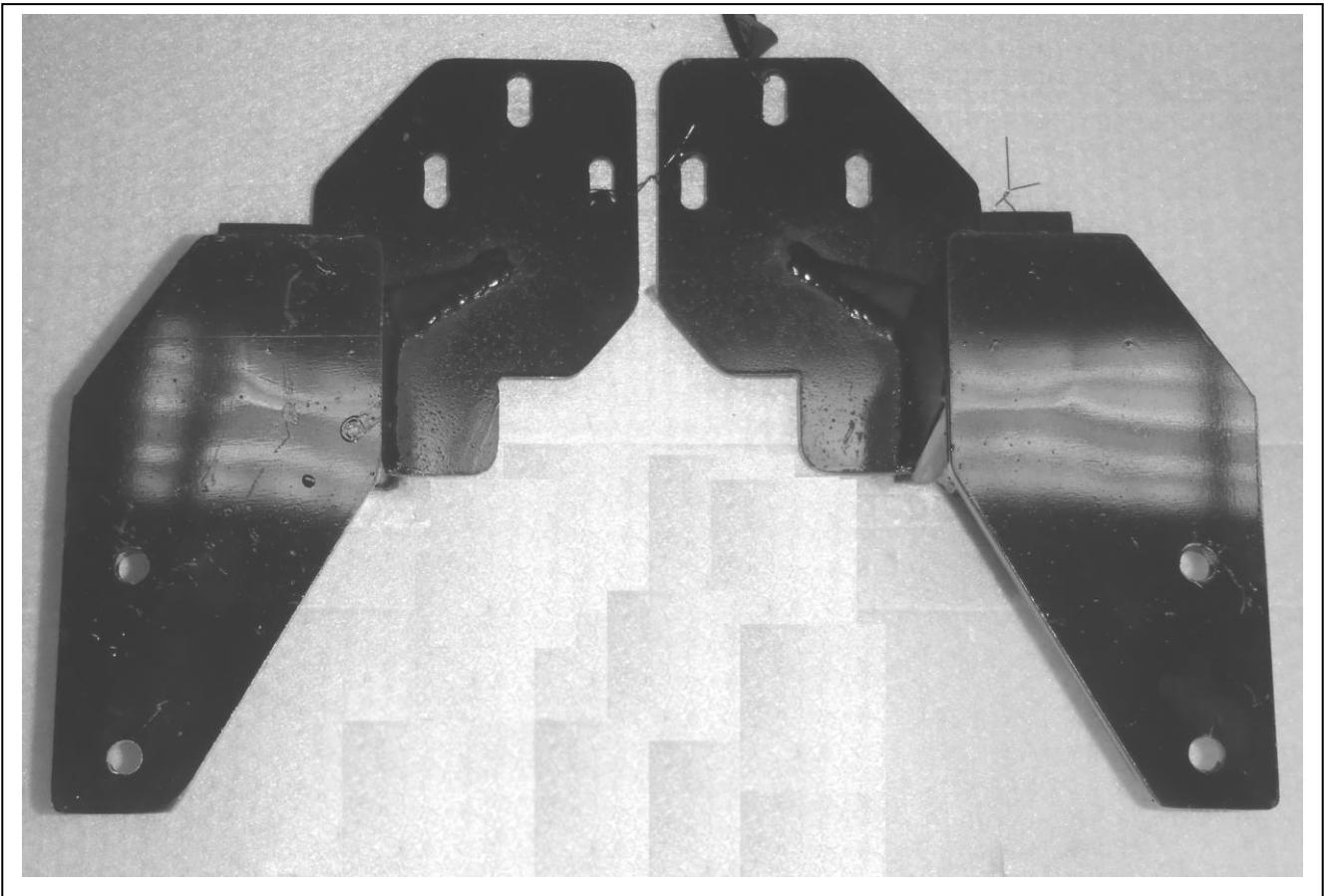
Fax: 07 3283 1168

ecb@ecb.com.au www.ecb.com.au

29 Snook St
Clontarf QLD 4019
Australia

Po Box 122
Margate QLD 4019
Australia

WORLD'S BEST
ALLOY BULLBARS



Aluminium Cleat - BT71SY_C3AL