



**WORLD'S BEST  
ALLOY BULLBARS**

**East Coast Bullbars (ECB Pty Ltd)**

Tel: 07 3897 5700

Fax: 07 3283 1168

ecb@ecb.com.au www.ecb.com.au

29 Snook St  
Clontarf QLD 4019  
Australia

Po Box 122  
Margate QLD 4019  
Australia

**BT38SY**

REPLACES: 10.02.10

REVISED: 29.06.10

## **FITTING INSTRUCTIONS**

### **PRADO GXL/GRANDE 03/03-10/09 BIG TUBE™ PROTECTION BAR VEHICLE FRONTAL PROTECTION SYSTEM (VFPS) FOR AIR BAG AND ADR COMPLIANT VEHICLES**

Check installation hardware before commencing.

1. Lift bonnet.
2. Remove bumper cover. One 10mm head self-tapper (each side) at top of side returns. One 10mm head self-tapper (each side) half way down side return. Two 10mm head self-tappers (each side) at bottom. Four 10mm head bolts along bottom and three plastic clips at top grille area. Pull out at side returns. Medium force is required to release off plastic clips. **See figure 1.** Remove bumper cover.
3. Remove side bumper cover clip assembly from vehicle, two 10mm head self-tappers (each side). **See figure 2.**
4. Remove steel bumper cover support, four 14mm head nuts behind foam. **See figure 3.**
5. Drill out upper holes in chassis extensions to 18mm for pipe chassis spacers. Drill out to 13mm then use die grinder if 18mm drill is not available. **See figures 4 and 5. Treat exposed metal with rust inhibitor and or paint.**
6. Feed 3/8 x 1 ¼ bolt, washers on 300mm wire (supplied) through 40 x 18 hole in chassis, **see figure 6**, to protrude out of forward chassis hole.
7. Place ECB steel mounting brackets over 3/8 x 1 ¼ bolt (supplied). Insert M8 x 30 x 1.25 bolts/washers (supplied) into upper captive nut in chassis. **FINGER TIGHTEN ONLY** to hold steel mounting bracket in place. Use 3/8 washer/nut (supplied) for 3/8 x 1 ¼ bolt. **FINGER TIGHTEN ONLY.**
8. Insert M12 x 35 x 1.25 bolt/ washers (supplied) into lower captive nut in chassis. **FINGER TIGHTEN ONLY. See figure 7**
9. Place 3/8 x 5 bolts (supplied) through steel angle mounts. Slide pipe chassis spacers (supplied) over bolts and feed chassis spacers and bolts into top holes. **See figure 8.** Attach lower steel angle mounts to 3/8 x 5 bolts. Use 3/8 nuts/washers (supplied). **FINGER TIGHTEN ONLY.**
10. Attach steel angle mounts to steel mounting brackets. Feed 3/8 x 1 ½ bolts (supplied) from inside, attach washer and nuts (supplied). **FINGER TIGHTEN ONLY. See figure 9.**
11. Level and square steel mounting brackets, check measurement between steel mounting brackets for protection bar to mount on inside. **TIGHTEN ALL BOLTS.** Recheck measurements. Adjust if necessary. Fold approx 50mm of wire on 3/8 x 1 ¼ bolts around hole in chassis. Crimp tight to chassis and cut off excess. **See figure 10.**
12. Splice ECB indicators / park light wiring into original wiring loome. Use cable locks (supplied).
13. Fit ECB LED indicator / park lights (supplied) into protection bar as per instructions supplied with the LED indicator kit. **NOTE: Ensure park light is to outside. See figure 11.**



**WORLD'S BEST  
ALLOY BULLBARS**

**East Coast Bullbars (ECB Pty Ltd)**

Tel: 07 3897 5700

Fax: 07 3283 1168

ecb@ecb.com.au www.ecb.com.au

29 Snook St  
Clontarf QLD 4019  
Australia

Po Box 122  
Margate QLD 4019  
Australia

14. Attach ECB fog lights to protection bar. Place M6 x 20 bolts, spring washers (supplied) through light mount from inside and attach nut to top. Slide assembly into light mount in Protection bar and centralize light to hole. **TIGHTEN FIRM ONLY.** Fit ECB fog light trims (supplied) to protection bar. **See figure 12.** Fit ECB fog light trims (supplied) to protection bar. **NOTE:** Wider part of trim faces to centre.
15. Fit ECB Prado infill trims (supplied) to top of protection bar. Use ¼ nylock nuts and flat washers (supplied) **See figure 13. FINGER TIGHTEN ONLY.**
16. Attach ECB protection bar to inside of steel mounting brackets. Use ½ x 1 ½ bolts, nuts and washers (supplied). **FINGER TIGHTEN ONLY.**
17. Align protection bar with top of infills approx 6mm from guards. **See figure 14 for side view. TIGHTEN IN POSITION.**  
**NOTE:** Clearance is needed for body/chassis twist in rough terrain. Align infill trims with vehicle and **TIGHTEN nylock nuts firm only. DO NOT OVER TIGHTEN AS INFILL MAY GET DAMAGED.**
18. Connect ECB indicator/park lights and ECB fog lamps. **CHECK OPERATION.**  
**NOTE:** Cut original fog lamp socket from original wiring. Use connectors supplied with ECB fog lamps.
19. Aim fog lights just below low beam and **TIGHTEN all fog light bolts.**
20. Fold small top portion of plastic inner guard over itself and then push behind infill trim. Tuck plastic inner guard in behind protection bar end cap. Fold remainder forward and up. Then secure with zip ties (supplied). Alternately bottom portion can be trimmed off to suit.
21. Attach air directional inserts (supplied) into cut outs in protection plate. **See figure 15.**
22. Position alloy protection plate up on inside of protection bar skirt. Secure to original steel under guard. Use M6 x 25 bolts and washers (supplied), **FINGER TIGHTEN ONLY. See figure 15.** Align in position and **TIGHTEN** to steel under guard. Drill three 6mm holes through fold on protection bar skirt and alloy protection plate. Use three M6 x 20 bolts, nuts and washers (supplied). **TIGHTEN** in position. Remove centre air vent in protection bar to access centre bolt and nut.

**Note:** When fitting/refitting the licence plate to the vehicle, ensure there is no obstruction to licence plate vision in accordance with local authorities. If required relocate licence plate to an alternate location.

#### **Further VFPS Notes:**

- a) Do not attach VFPS to the vehicle using anchorages not intended for this purpose (e.g. engine mounting bolts).
- b) Do not use this product for any vehicle make or model, other than those specified by the VFPS manufacturer.
- c) Do not remove the plaque or label from the VFPS.
- d) Do not modify the structure of the VFPS in any way.
- e) No accessory or fitment should project forward of the VFPS forward profile.
- f) **Ensure these instructions are left with vehicle owner and/or operator.**



East Coast Bullbars (ECB Pty Ltd)

Tel: 07 3897 5700

Fax: 07 3283 1168

ecb@ecb.com.au www.ecb.com.au

29 Snook St  
Clontarf QLD 4019  
Australia

Po Box 122  
Margate QLD 4019  
Australia

**WORLD'S BEST  
ALLOY BULLBARS**

**FITTING KIT**

2 – Steel mounting brackets.	8 – ½ spring washers.
4 – Steel angle mounts.	2 – M8 x 30 x 1.25 bolts.
2 – Prado infill mouldings (pair)	2 – 8mm flat washers.
1 – Alloy protection plate	2 – 8mm spring washers.
1 – ECB LED Indicator / Park light kit	4 – 81mm long 10nb pipe chassis spacers.
10 – Cable locks.	2 – ECB Fog Lamps and wiring kit.
4 – 3/8 x 5 bolts.	2 – ECB round light trims.
2 – 3/8 x 1 ¼ bolts/washers on 300mm wire.	4 – M6 x 25 bolts.
8 – 3/8 x 1 ½ bolts.	3 – M6 x 20 bolts.
14 – 3/8 nuts.	5 – M6 nuts.
26 – 3/8 flat washers	7 – 6mm spring washers.
14 – 3/8 spring washers.	8 – ¼ nylock nuts.
6 – ½ x 1 ½ bolts/nuts.	18 – ¼ flat washers.
2 – M12 x 35 x 1.25 bolts.	4 – 200mm zip ties.
14 – ½ flat washers	2 – 3mm Air Directional Inserts for alloy protection plate.



**Figure 1**

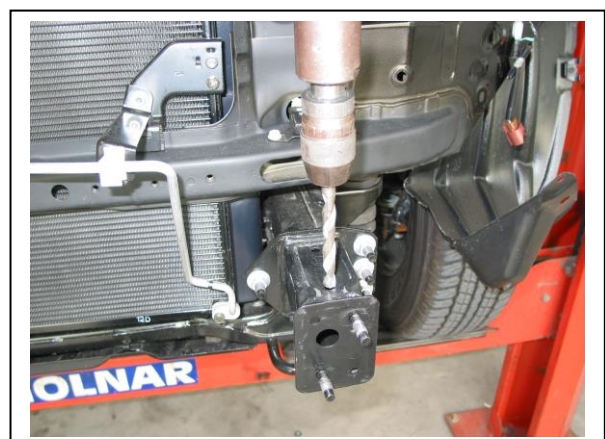


**Figure 2 – Drivers side shown. Removing bumper cover clip assembly.**



Steel bumper cover support

**Figure 3**



**Figure 4**



East Coast Bullbars (ECB Pty Ltd)

Tel: 07 3897 5700

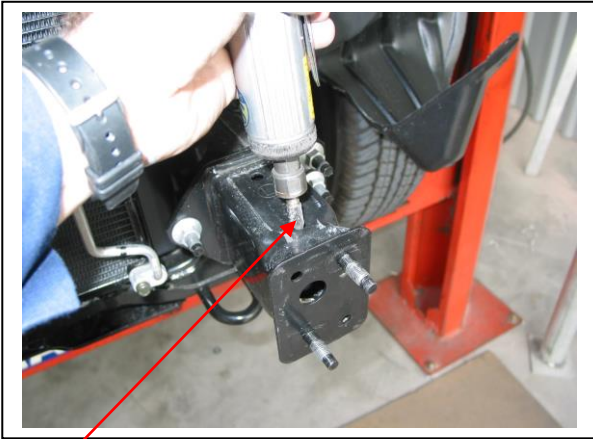
Fax: 07 3283 1168

ecb@ecb.com.au www.ecb.com.au

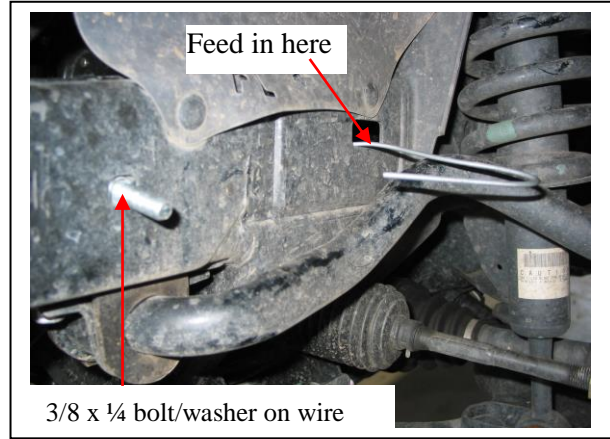
29 Snook St  
Clontarf QLD 4019  
Australia

Po Box 122  
Margate QLD 4019  
Australia

WORLD'S BEST  
ALLOY BULLBARS

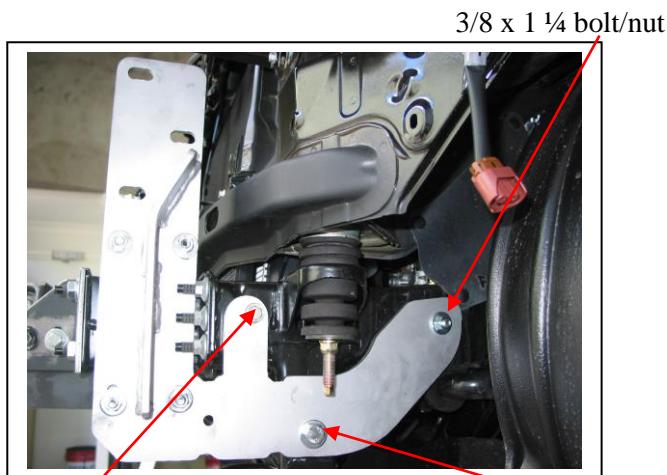


Die grinder shown enlarging top holes **Figure 5**

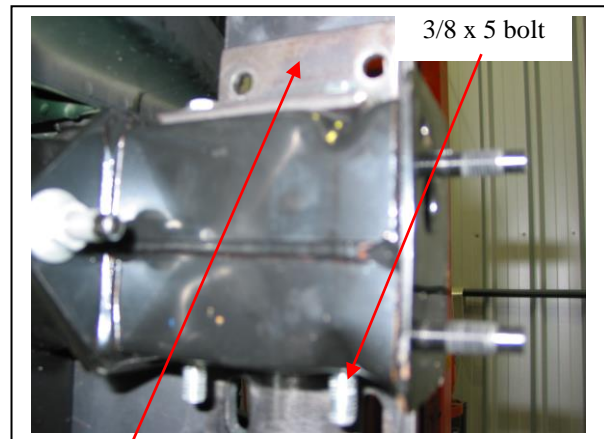


**Figure 6 – Passenger side shown**

3/8 x 1/4 bolt/washer on wire



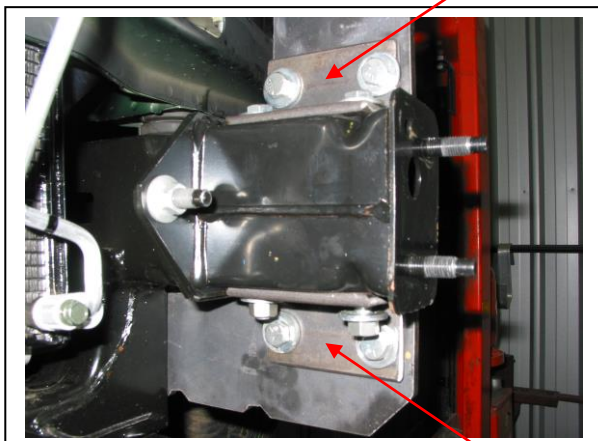
**Figure 7**



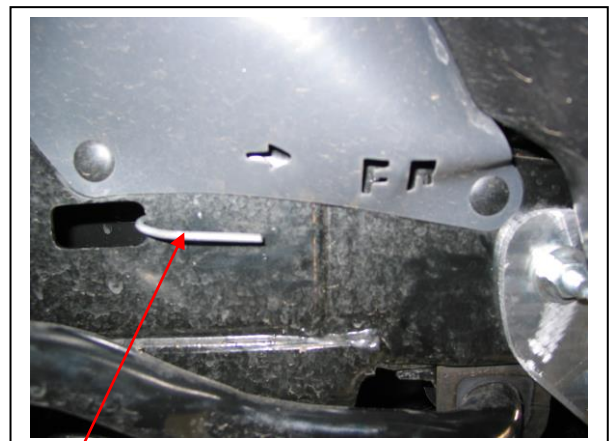
**Figure 8**

Steel angle mount on top of chassis – Passenger side shown

Upper steel angle mount



**Figure 9** Lower steel angle mount – Passenger side shown



Wire on bolt folded tight around chassis **Figure 10**



East Coast Bullbars (ECB Pty Ltd)

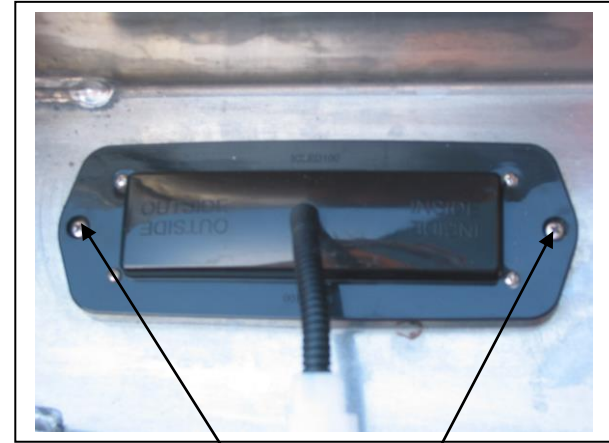
Tel: 07 3897 5700

Fax: 07 3283 1168

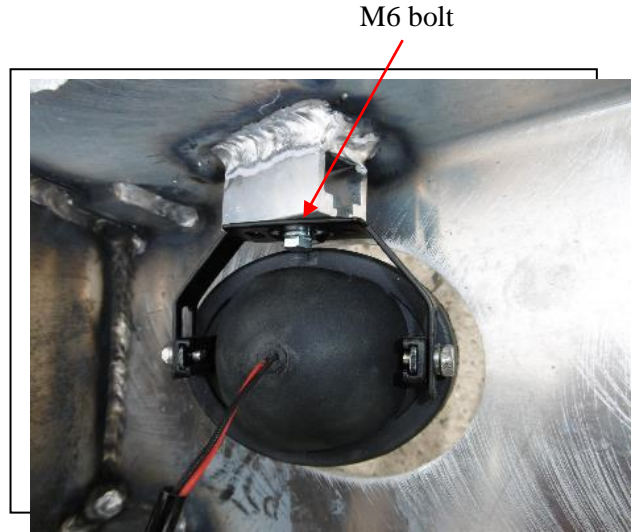
ecb@ecb.com.au www.ecb.com.au

29 Snook St  
Clontarf QLD 4019  
Australia

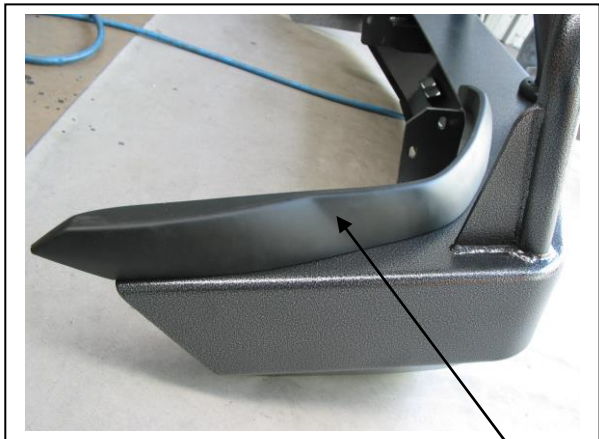
Po Box 122  
Margate QLD 4019  
Australia



**Figure 11**  
Stainless steel self-tappers



M6 bolt



**Figure 13** Infill trim



6mm clearance here

**Figure 14**



**Figure 15**



East Coast Bullbars (ECB Pty Ltd)

Tel: 07 3897 5700

Fax: 07 3283 1168

ecb@ecb.com.au www.ecb.com.au

29 Snook St  
Clontarf QLD 4019  
Australia

Po Box 122  
Margate QLD 4019  
Australia

**WORLD'S BEST  
ALLOY BULLBARS**

## *We value your comments*

Dear Fitter,

ECB would like to know how you went with the installation of this product. We value your comment and may need to contact you to clarify some details so please complete your contact details clearly.

We would appreciate if you could complete as many of the following details as possible.

<b>Your Name:</b>	<b>Your contact No.</b>
<b>Product Part No.</b>	<b>Product Invoice No.</b>
<b>Product Description:</b>	<b>Make, model, and year of vehicle:</b>
<b>Product Work Order No.</b>	<b>Company your from/Company product purchased from:</b>

**Date of Fitment:** \_\_\_/\_\_\_/\_\_\_

Was the fitting hardware supplied complete?

Yes

No

If no what was not supplied

---

---

Did the installation go well?

Yes

No

Please provide comments

---

---

---

Please draw diagrams if you need to.

**Post to**  
Reply Paid 122  
PO Box 122  
Margate QLD 4019

**Fax to**  
(07) 3283 1168



WORLD'S BEST  
ALLOY BULLBARS

East Coast Bullbars (ECB Pty Ltd)

Tel: 07 3897 5700

Fax: 07 3283 1168

ecb@ecb.com.au www.ecb.com.au

29 Snook St  
Clontarf QLD 4019  
Australia

Po Box 122  
Margate QLD 4019  
Australia

# DESPATCH CHECKLIST BT38SY

ICZBKCT38



Work Order #	
Finish:	
Transport:	
Due Date:	

- 2 – Steel mounting brackets.
- 4 – Steel angle mounts.
- 2 – Prado infill mouldings (pair).
- 1 – Alloy protection plate.
- 1 – Bolt Kit.
- 1 – ECB LED Indicator / Park light kit.
- 2 – ECB fog lights and wiring kit.
- 2 – ECB round light trims – *in kit*
- 2 – 3mm air directional inserts for alloy protection plate.
- 2 – ECB overrides – **Fitted to bar.**
- 2 – 6mm air scoops – **Fitted to bar.**
- 3 – 3mm air scoops – **Fitted to bar.**

**See other side of  
this page for  
photos of all  
mounts**



Is this product “the best it can be” Yes \_\_\_\_\_ / \_\_\_\_\_  
Wrapper’s initials / Checker initials

If **NO** fix before continuing

All parts checked and completed by:

Nut and bolts: \_\_\_\_\_ Date \_\_/\_\_/\_\_

Order control: \_\_\_\_\_ Date \_\_/\_\_/\_\_

Final wrap check: \_\_\_\_\_ Date \_\_/\_\_/\_\_



East Coast Bullbars (ECB Pty Ltd)

Tel: 07 3897 5700

Fax: 07 3283 1168

ecb@ecb.com.au www.ecb.com.au

29 Snook St  
Clontarf QLD 4019  
Australia

Po Box 122  
Margate QLD 4019  
Australia

WORLD'S BEST  
ALLOY BULLBARS

