



WORLD'S BEST  
ALLOY BULLBARS

East Coast Bullbars (ECB Pty Ltd)

Tel: 07 3897 5700

Fax: 07 3283 1168

ecb@ecb.com.au www.ecb.com.au

29 Snook St  
Clontarf QLD 4019  
Australia

Po Box 122  
Margate QLD 4019  
Australia

**BT129SY**

REPLACES: 00.00.00  
REVISED: 17.01.18

## FITTING INSTRUCTIONS

### HILUX 09/11on 2WD / 4WD BIG TUBE™ FOG LIGHT PROTECTION BAR WITH 9000LB WARN WINCH FITMENT VEHICLE FRONTAL PROTECTION SYSTEM (VFPS) FOR AIR BAG & ADR COMPLIANT VEHICLES

Check installation hardware before commencing.

1. Lift bonnet
2. Remove grille, two plastic clips and two PK self-tappers along top, pull grille forward at top enough to access and release five fixed clips along bottom inside of grille.
3. Remove bumper cover, three plastic clips along top (grille area), one plastic clip (each side) at bumper cover top side returns, four 10mm head self-tapper on inner guard (each side), three plastic clips along bottom of bumper cover. Pull bumper cover outward at sides to release off clips.
4. Remove steel chassis cross member from front of chassis, four 14mm nuts. **See figure 1.**  
**On 4WD models:** Remove two plastic clips from plastic under body guard (each side).
5. **On 4WD models** trim plastic air deflectors at top of cross member. **See figure 2.**
6. Remove four bumper cover support brackets from vehicle. **See figure 3.**
7. Remove headlight / indicator assemblies from vehicle. Three 10mm head self-tappers and one 10mm head bolt. Disconnect wiring as removing. **See figure 4.**
8. Remove plastic bumper cover support brackets from bottom of headlights. Two PK screws (per light) **See figure 5.**
9. Remove plastic bumper cover side supports from each guard. One 10mm head self-tapper. **See figure 6.**
10. Connect ECB quick click indicator / park light wiring harness (supplied) to original wiring loome. Refit headlight / indicator assemblies connecting to the other side of the ECB wiring harness. Run ECB wiring harness out from under headlight ensuring it is clear of all sharp edges and pinch points.
11. Connect ECB Quick Click fog light wiring harness (supplied) into original wiring harness. Should vehicle not have original equipment fog lights, an aftermarket wiring harness will be required.
12. Remove steel under guard, four 12mm head bolts. Remove two cross member supports from chassis. **See figure 7.** Five 14mm head bolts (per support).
13. Rotate gearbox housing on winch if necessary. **See figure 8.** Remove ten allen head bolts – move housing out just off spline to rotate.
14. Connect control box cables to winch and sit control box on top of winch.
15. Place winch mounting bracket (supplied) on trolley jack or similar, sit winch and control box in winch mount with winch slightly toward passenger side. **DO NOT BOLT** winch to winch mount. **See figure 9.**



**WORLD'S BEST  
ALLOY BULLBARS**

**East Coast Bullbars (ECB Pty Ltd)**

Tel: 07 3897 5700

Fax: 07 3283 1168

ecb@ecb.com.au www.ecb.com.au

29 Snook St  
Clontarf QLD 4019  
Australia

Po Box 122  
Margate QLD 4019  
Australia

16. Jack up onto chassis just forward of chassis studs – once aligned push back onto chassis studs. Use original nuts for chassis studs. **FINGER TIGHTEN ONLY. See figures 10 and 11.**
17. Refit two original cross member supports over winch mount. Use four M10 x 35 x 1.25 bolts, flat and spring washers (supplied) for winch mount. **See figure 12.** Ensure 10mm holes on winch mount are aligned with middle chassis hole. **TIGHTEN FOUR ORIGINAL NUTS ON STUDS FIRST – THEN TIGHTEN ALL CROSS MEMBER BOLTS.**
18. Refit steel under guard.
19. Slide winch into position, insert top winch captive nuts, then bolt winch in place with top bolts only. Use 3/8 x 1¼ winch bolts with flat and spring washers (supplied). **FINGER TIGHTEN ONLY. NOTE:** Ensure any air conditioning lines etc are clear of winch.
20. Fit control box bracket (supplied) to inside of winch mount. Use M8 x 30 bolts, nuts and washers (supplied) **FINGER TIGHTEN ONLY. NOTE:** Attach motor earth lead to one of M8 x 30 bolts – Ensure good earth contact.
21. Bolt control box to control box bracket. **NOTE:** Standard control box will require the 95x 50x6 spacer plate to be positioned between control box and control box bracket. Use original nuts with four ¼ flat washers (supplied) for each side of control box bracket and spacer. **TIGHTEN ALL BOLTS AND NUTS** Ensure all winch cables are positioned to avoid any rubbing etc.
22. Centralise winch ensuring all clearances around winch are sufficient, insert lower captive nuts into winch. Align lower captive nuts, then **TIGHTEN** top winch bolts.
23. Feed winch cable through winch mount. Fit roller fairlead over winch cable and bolt to winch. Use 3/8 x 1½ winch bolts with flat and spring washers (supplied). Align roller fairlead. **TIGHTEN BOLTS.**
24. Wire winch to battery as per winch instructions. Check winch for correct operation.
25. Place 3/8 x 4 bolt with flat washer (supplied) through 10mm hole in steel mounting bracket. Slide 52mm long pipe chassis spacer (supplied) over bolt. **See figure 13.** Fit steel mounting bracket to chassis with pipe spacer into middle chassis hole and insert through winch mount. **See figure 14.** Use 3/8 nut, flat and spring washers (supplied) **FINGER TIGHTEN ONLY.**
26. Fit M12 x 35 x 1.25 bolt, flat and spring washers (supplied) and M8 x 30 bolt, flat and spring washers (supplied) into captive nuts in chassis. **FINGER TIGHTEN ONLY. See figure 15.** Fit 3/8 x 1½ bolts, nuts and washers (supplied) from winch mount to steel mounting brackets. **See figure 16.**
27. Tighten M12 x 35 x 1.25 bolts **firm only.** Level steel mounting brackets off front edge. **See figure 17. TIGHTEN ALL BOLTS / NUTS** (as per the below sequence) ensuring steel mounting brackets remain centralised with vehicle and are correct distance apart for alloy protection bar to mount on outside of steel mounting brackets.  
Mount bolt tighten sequence:
  - a) **TIGHTEN** M12 x 35 bolts first.
  - b) **TIGHTEN** 3/8 x 4 bolt/nut **FIRM ONLY**
  - c) Align steel mounting brackets level at sides and with enough distance apart for protection bar to mount on outside of steel mounting brackets. **See figure 18. TIP:** Tighten 3/8x 1½ bolt/nut **firm only** then tap mounts into position.
  - d) **TIGHTEN** 3/8 x 1 ½ bolts and nuts from winch mount to steel mounting bracket.
  - e) **TIGHTEN** 3/8 x 4 bolts/nuts.
  - f) **TIGHTEN** M8 x 30 bolts.
28. Use four 3/8 x 1¼ bolts, nuts and washers (supplied) for extra holes in front of chassis. **See figure 19. TIGHTEN.**



**WORLD'S BEST  
ALLOY BULLBARS**

**East Coast Bullbars (ECB Pty Ltd)**

Tel: 07 3897 5700

Fax: 07 3283 1168

ecb@ecb.com.au www.ecb.com.au

29 Snook St  
Clontarf QLD 4019  
Australia

Po Box 122  
Margate QLD 4019  
Australia

29. Fit ECB LED indicator / park lights (supplied) into protection bar as per instructions supplied with the LED indicator kit. **NOTE: Ensure park light is to outside. See figure 20.**
30. Attach ECB fog lights to protection bar. Place M6 x 20 bolts, spring washers (supplied) through light mount from inside and attach nut to top. Slide assembly into light mount in Protection bar and centralize light to hole. **TIGHTEN FIRM ONLY. See figure 21.**
31. Attach ECB 6mm clip lock trim to centre section of protection bar and centre cut out of skirt. **See figures 22 and 23.**
32. Attach ECB infill trims (supplied) to protector bar. Use M6 nyloc nuts and flat washers (supplied) **FINGER TIGHTEN ONLY. See figure 24.**
33. Fit ECB protection bar to outside of steel mounting brackets. Use ½ x 1 ¾ bolts, nuts, flat and spring washers (supplied). **FINGER TIGHTEN ONLY.**
34. Align ECB protection bar with vehicle ensuring a gap of 10 to 12mm between protection bar and guard / flare at sides. See **figure 25** for side view and **figure 26** for front view **TIGHTEN ALL BOLTS.** Impact wrench access is from grille area. **NOTE: A 10mm to 12mm gap each side is critical to allow for body/chassis twist in rough terrain.**
35. Connect indicator / park light wiring and **CHECK OPERATION.**
36. Carefully drill three 3/16 holes in lower lip on grille, one in centre and one each side, refit grille to vehicle. Zip tie bottom of grille to head light / indicator assemblies and to steel bracket in centre. **See figures 27 and 28.**
37. Align ECB infill trims with vehicle and protection bar. **TIGHTEN NUTS FIRM ONLY – DO NOT OVERTIGHTEN.**
37. Using ECB inner guard bracket supplied fit bracket to lower radiator support using one 10mm head bolt from lower bumper mounts to radiator support and one M6x20 bolt, washer and nyloc nut per side. **See figure 29.** Secure outer hole in liner to inner guard bracket with bolt supplied M6 x 20 bolt, washers and nyloc nuts. Then secure second hole in inner guard bracket to liner with M6 x 20 bolt , washer and nyloc nut, ensure is not pulled to tight it may cause liner to tear. Tighten bolts and trim any excess liner off. On passenger side ensure washer bottle stays covered after trim. **See figure 30.**

#### **ENSURE NUMBER PLATE IS CLEARLY VISABLE**

**Note:** When fitting/refitting the licence plate to the vehicle, ensure there is no obstruction to licence plate vision in accordance with local authorities. If required relocate licence plate to an alternate location.

#### **Further VFPS Notes:**

- a) Do not attach VFPS to the vehicle using anchorages not intended for this purpose (e.g. engine mounting bolts).
- b) Do not use this product for any vehicle make or model, other than those specified by the VFPS manufacturer.
- c) Do not remove the plaque or label from the VFPS.
- d) Do not modify the structure of the VFPS in any way.
- e) No accessory or fitment should project forward of the VFPS forward profile.
- f) **ENSURE THESE INSTRUCTIONS ARE LEFT WITH VEHICLE OWNER AND/OR OPERATOR.**

#### **IMPORTANT INFORMATION**

Periodically check bolts and nuts for correct tightness, especially if travelling on rough roads



East Coast Bullbars (ECB Pty Ltd)

Tel: 07 3897 5700

Fax: 07 3283 1168

ecb@ecb.com.au www.ecb.com.au

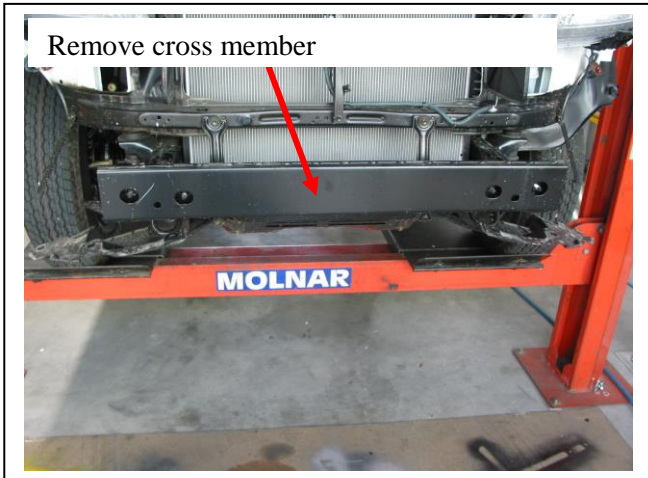
29 Snook St  
Clontarf QLD 4019  
Australia

Po Box 122  
Margate QLD 4019  
Australia

**WORLD'S BEST  
ALLOY BULLBARS**

**FITTING KIT**

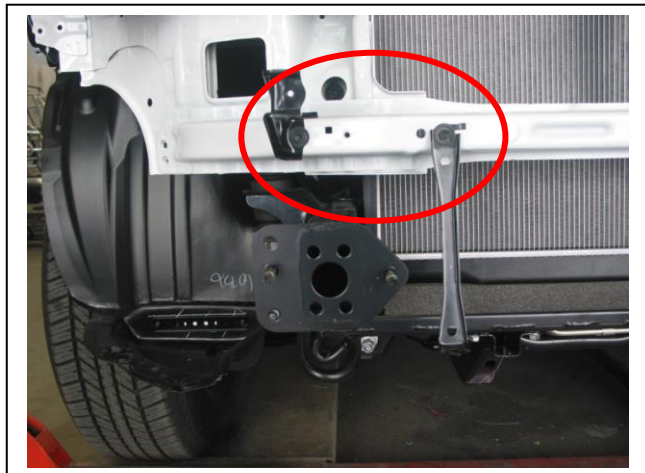
1 – Pair steel mounting brackets	14 – ½ flat washers
1 – steel winch mounting bracket	8 – ½ spring washers
1 – Steel control box mount	6 – ½ nuts
2 – Steel inner guard brackets	4 – ¼ flat washers
2 – 95 x 50 x 6 steel spacer plate (two 10mm holes)	8 – M6 x 20 bolts
2 – 10nb tube spacer, 52mm long	20 – M6 flat washers
2 – M12 x 35 x 1.25 bolts	12 – M6 nyloc nuts
4 – M10 x 35 x 1.25 bolts	2 – M6 nuts and spring washers
4 – M8 x 30 x 1.25 bolts	1 – Pair ECB Hilux infills (IC11LUXINFL)
6 – M8 flat washers	1 – ECB indicator park light kit
4 – M8 spring washers	1 – Quick Click Indi / Park kit (IC11HILLED100H)
2 – M8 nuts	1 – ECB fog light kit
2 – 3/8 x 4 bolts	1 – Quick Click fog wiring kit (IC07LC791004ECBH)
4 – 3/8 x 1 ½ bolts	2 – fog light trims
6 – 3/8 x 1 ¼ bolts	1 – 1100mm length, 6mm clip lock trim
24 – 3/8 flat washers	1 – 700mm length , 6mm clip lock trim
18 – 3/8 spring washers	6 – 300mm zip ties
10 – 3/8 nuts	6 – 150mm zip ties
6 – ½ x 1 ¾ bolts	



**Figure 1**



**Figure 2:** Trim lower section from air dam. Passengers side shown.



**Figure 3 – Drivers side shown**



**Figure 4 – Remove headlight**





East Coast Bullbars (ECB Pty Ltd)

Tel: 07 3897 5700

Fax: 07 3283 1168

ecb@ecb.com.au www.ecb.com.au

WORLD'S BEST  
ALLOY BULLBARS

29 Snook St  
Clontarf QLD 4019  
Australia

Po Box 122  
Margate QLD 4019  
Australia

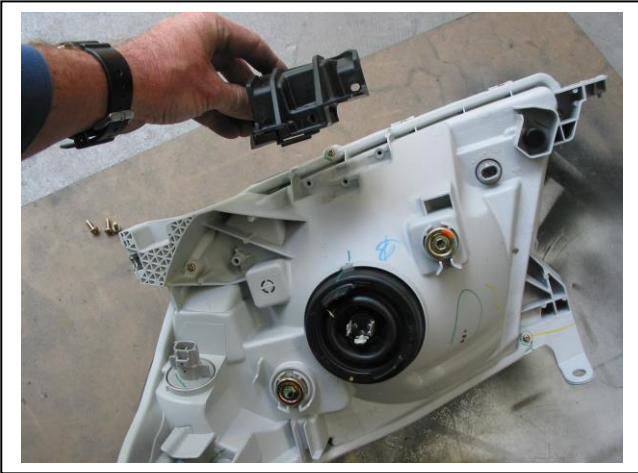


Figure 5 – Removing trim from lower headlights



Figure 6 - Remove plastic bumper support from under guard.



Figure 7



Figure 8



Figure 9

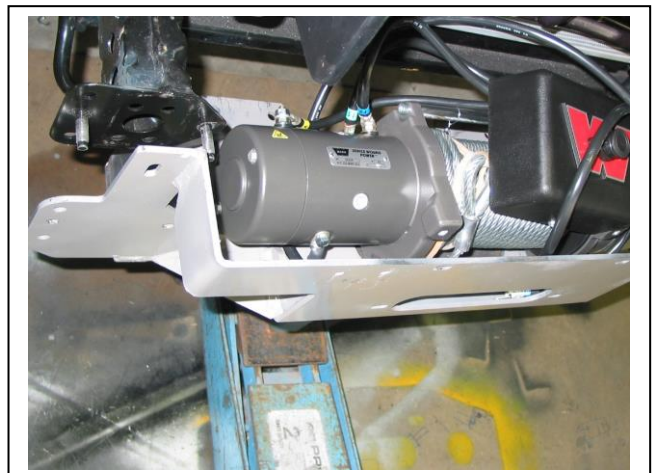


Figure 10





East Coast Bullbars (ECB Pty Ltd)

Tel: 07 3897 5700

Fax: 07 3283 1168

ecb@ecb.com.au www.ecb.com.au

29 Snook St  
Clontarf QLD 4019  
Australia

Po Box 122  
Margate QLD 4019  
Australia

WORLD'S BEST  
ALLOY BULLBARS



Figure 11

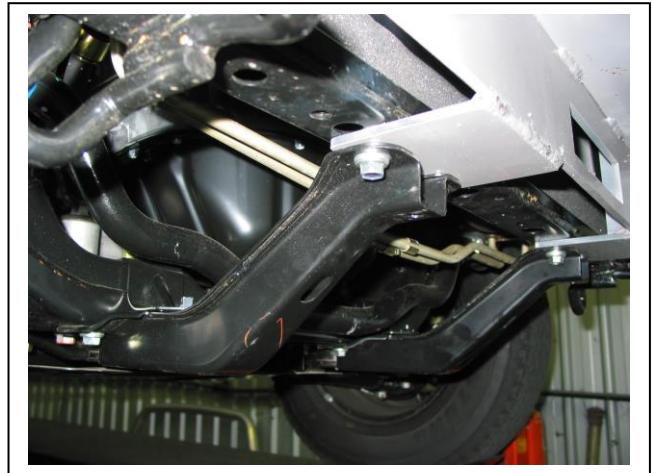


Figure 12



Figure 13

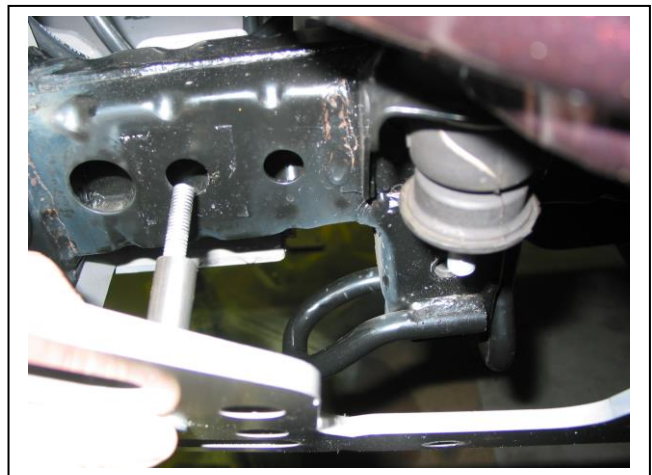


Figure 14

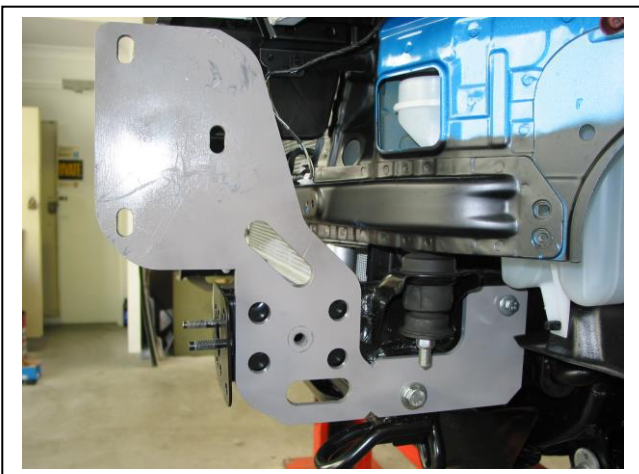


Figure 15



Figure 16



East Coast Bullbars (ECB Pty Ltd)

Tel: 07 3897 5700

Fax: 07 3283 1168

ecb@ecb.com.au www.ecb.com.au

29 Snook St  
Clontarf QLD 4019  
Australia

Po Box 122  
Margate QLD 4019  
Australia

WORLD'S BEST  
ALLOY BULLBARS

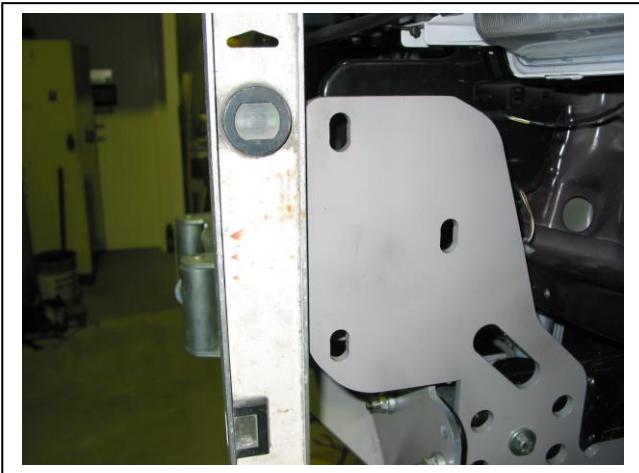


Figure 17



Figure 18



Figure 19

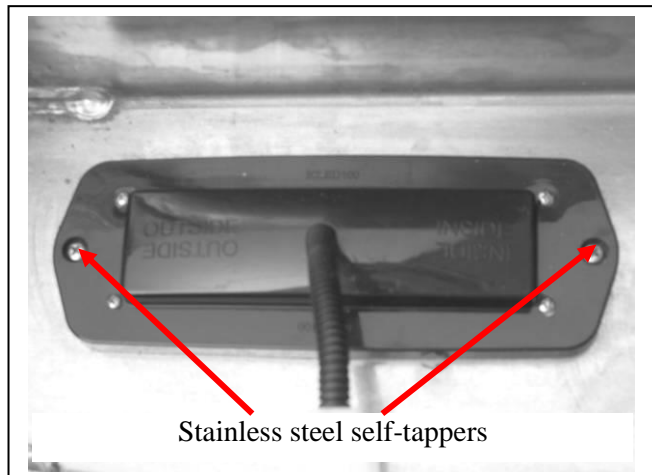
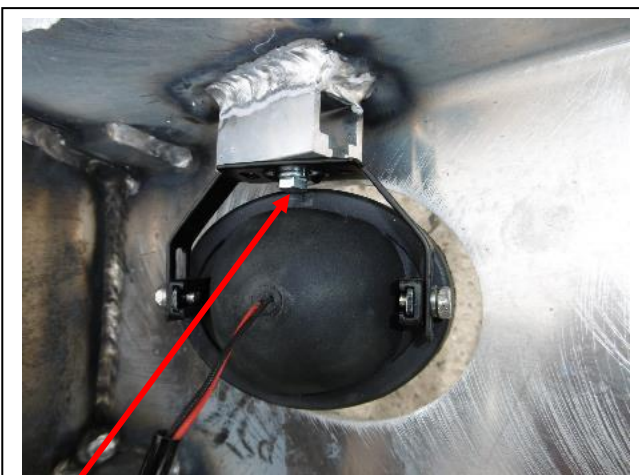
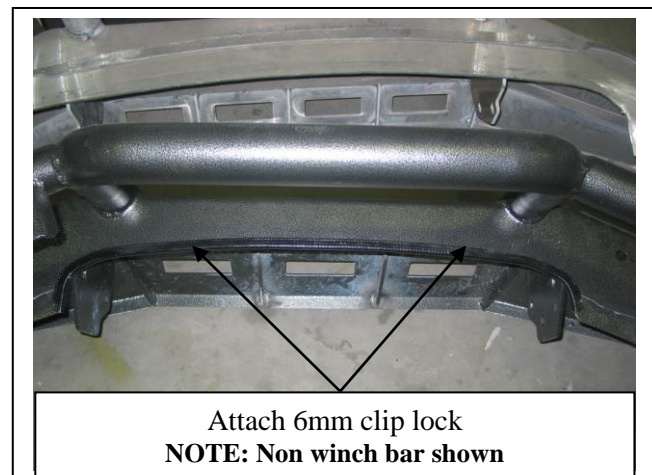


Figure 20



M6 bolt

Figure 21



Attach 6mm clip lock  
NOTE: Non winch bar shown

Figure 22





East Coast Bullbars (ECB Pty Ltd)

Tel: 07 3897 5700

Fax: 07 3283 1168

ecb@ecb.com.au www.ecb.com.au

29 Snook St  
Clontarf QLD 4019  
Australia

Po Box 122  
Margate QLD 4019  
Australia

WORLD'S BEST  
ALLOY BULLBARS



Attach 6mm clip lock

Figure 23



Figure 24



Figure 25



Figure 26

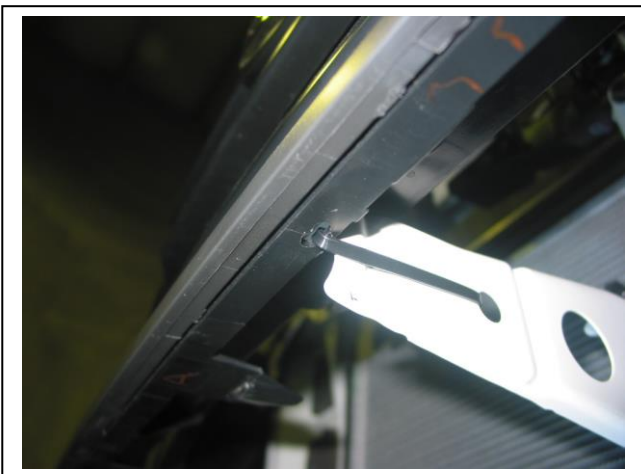


Figure 27 – Centre grille attach point

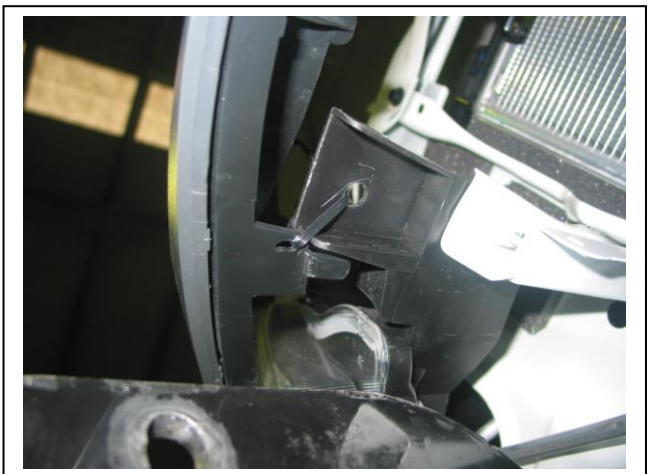


Figure 28 – Side grille attachment point. Drivers side shown.





**WORLD'S BEST  
ALLOY BULLBARS**

**East Coast Bullbars (ECB Pty Ltd)**

Tel: 07 3897 5700

Fax: 07 3283 1168

ecb@ecb.com.au www.ecb.com.au

29 Snook St  
Clontarf QLD 4019  
Australia

Po Box 122  
Margate QLD 4019  
Australia



**Figure 29** –Drivers side shown



**Figure 30** –Passengers side shown



**WORLD'S BEST  
ALLOY BULLBARS**

**East Coast Bullbars (ECB Pty Ltd)**

Tel: 07 3897 5700

Fax: 07 3283 1168

[ecb@ecb.com.au](mailto:ecb@ecb.com.au) [www.ecb.com.au](http://www.ecb.com.au)

29 Snook St  
Clontarf QLD 4019  
Australia

Po Box 122  
Margate QLD 4019  
Australia





**WORLD'S BEST  
ALLOY BULLBARS**

**East Coast Bullbars (ECB Pty Ltd)**

Tel: 07 3897 5700

Fax: 07 3283 1168

ecb@ecb.com.au www.ecb.com.au

29 Snook St  
Clontarf QLD 4019  
Australia

Po Box 122  
Margate QLD 4019  
Australia

**We value your comments**

Dear Fitter,

ECB would like to know how you went with the installation of this product. We value your comment and may need to contact you to clarify some details so please complete your contact details clearly.

We would appreciate if you could complete as many of the following details as possible.

<b>Your Name:</b>	<b>Your contact No.</b>
<b>Product Part No.</b>	<b>Product Invoice No.</b>
<b>Product Description:</b>	<b>Make, model, and year of vehicle:</b>
<b>Product Work Order No.</b>	<b>Company your from/Company product purchased from:</b>

**Date of Fitment:** \_\_\_\_/\_\_\_\_/\_\_\_\_

Was the fitting hardware supplied complete?      Yes      No

If no what was not supplied

---



---



---

Did the installation go well?      Yes      No

Please provide comments

---



---



---

Please draw diagrams if you need to.

**Post to**  
Reply Paid 122  
PO Box 122  
Margate QLD 4019

**Fax to**  
(07) 3283 1168



**WORLD'S BEST  
ALLOY BULLBARS**

**East Coast Bullbars (ECB Pty Ltd)**

Tel: 07 3897 5700

Fax: 07 3283 1168

[ecb@ecb.com.au](mailto:ecb@ecb.com.au) [www.ecb.com.au](http://www.ecb.com.au)

29 Snook St  
Clontarf QLD 4019  
Australia

Po Box 122  
Margate QLD 4019  
Australia





WORLD'S BEST  
ALLOY BULLBARS

East Coast Bullbars (ECB Pty Ltd)

Tel: 07 3897 5700

Fax: 07 3283 1168

ecb@ecb.com.au www.ecb.com.au

29 Snook St  
Clontarf QLD 4019  
Australia

Po Box 122  
Margate QLD 4019  
Australia

## DESPATCH CHECKLIST BT129SY

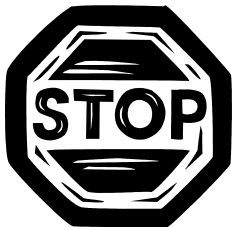
ICZBKCT129



Work Order #	
Finish:	
Transport:	
Due Date:	

- OC.....1 – Pair steel mounting brackets (pair)
- OC.....1 – winch mounting bracket
- OC.....1 – Control box mount
- OC.....2 – ECB inner guard bracket.
- BK.....2 – 90 x 50 x 6 steel spacer plate
- BK.....1 – Bolt kit
- BK.....1 – 1100mm length, 6mm clip lock trim
- BK.....1 – 700mm length, 6mm clip lock trim
- BK.....1 – ECB LED Indicator / Park light kit.
- BK.....1 – ECB fog light kit
- BK.....2 – fog light trims
- OC.....1 – Pair Hilux infill trims. (IC11LUXINFL)
- BK.....1– Quick Click Indi / Park kit (IC11HILLED100H)
- BK.....1 – Quick Click fog wiring kit (IC11HIL1004ECBH)
- BK.....1 – Quick Click fog wiring kit (IC10D401004ECBH)
- OC.....2 – ECB overrides – **Fitted to bar.**
- OC.....5 – 6mm air scoops – **Fitted to bar.**

**See other side of  
this page for  
photos of all  
mounts**



Is this product “the best it can be” Yes \_\_\_\_\_/\_\_\_\_\_

Wrapper’s initials / Checker initials

If **NO** fix before continuing

All parts checked and completed by:

Nut and bolts: \_\_\_\_\_ Date \_\_/\_\_/\_\_

Order control: \_\_\_\_\_ Date \_\_/\_\_/\_\_

Final wrap check: \_\_\_\_\_ Date \_\_/\_\_/\_\_



East Coast Bullbars (ECB Pty Ltd)

Tel: 07 3897 5700

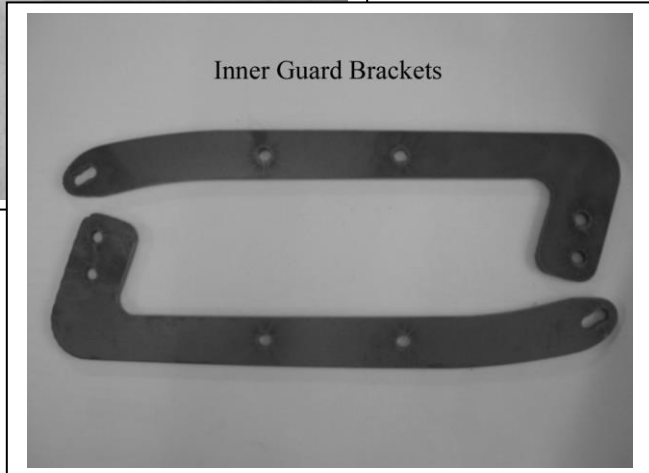
Fax: 07 3283 1168

ecb@ecb.com.au www.ecb.com.au

29 Snook St  
Clontarf QLD 4019  
Australia

Po Box 122  
Margate QLD 4019  
Australia

WORLD'S BEST  
ALLOY BULLBARS



Infill Trims – IC11HILINFL

