



WORLD'S BEST
ALLOY BULLBARS

East Coast Bullbars (ECB Pty Ltd)

Tel: 07 3897 5700

Fax: 07 3283 1168

ecb@ecb.com.au www.ecb.com.au

29 Snook St
Clontarf QLD 4019
Australia

Po Box 122
Margate QLD 4019
Australia

BSZ63SY

REPLACES: 29.07.13
REVISED: 01.04.15

**FITTING INSTRUCTIONS
SUZUKI GRAND VITARA JB 13on (Petrol only)
BIG TUBE™ PROTECTION BAR WITH FOG LIGHTS
VEHICLE FRONTAL PROTECTION SYSTEM (VFPS)
FOR AIR BAG & ADR COMPLIANT VEHICLES**

Check installation hardware before commencing.

1. Lift bonnet
2. Remove grille: four plastic push pull clips on top grille. Gently lift and pull forward to release lower clips. **See figures 1 and 2.**
3. Remove bumper: two 10mm head bolts from front of bumper behind grille section. Remove one 10mm head bolt and four plastic push pull clips from guard liner on each side. Remove seven plastic push pull clips and two 10mm head bolts from under bumper. Gently pull wings out from under guards and slide forward off vehicle. Unplug temperature sensor and fog lights (if fitted).
4. Remove passenger side headlight: three 10mm head bolts. Pull out on inside lower corner of light and lift up to remove. Disconnect all wires and remove completely to allow access to washer bottle. **See figure 3.**
5. Remove washer bottle: one plastic push pull clip from top near filler cap and four 10mm head bolts. Leaving all wires and hoses connected lift up and place under bonnet to allow access for drilling holes. **See figure 4.** Remove air box from driver's side, two 10mm head bolts.
6. Using die grinder or similar enlarge hole under front of chassis rail to allow M10 bolt and washer on wire to fit through. **See figure 5. NOTE:** Blow filings clear and treat all exposed metal with a rust inhibitor. Remove front plastic bumper support.
7. Fit ECB steel mounting bracket (supplied) to chassis using one M10 x 35 bolt on wire (supplied) in bottom factory hole and one M10 x 35 bolt with washer on wire in top hole with flat washer, spring washer and nuts (supplied) on side of chassis rail. **Finger tighten only. See figure 6.**
8. Using a 10mm drill bit and the ECB steel mounting bracket as a guide, drill rear two holes and front top hole in steel mounting bracket through chassis on each side; **NOTE:** Blow filings clear and treat all exposed metal with a rust inhibitor. **See figure 7.** Fit three M10 x 40 bolts, flat washer, spring washer and nuts (supplied) through rear holes with bolt to outside and top front hole with bolt to inside of chassis rail. **TIGHTEN ALL BOLTS** both sides.
9. Refit washer bottle and air box reverse of removal refer steps 4 and 5. Ensure washer bottle and air box clear mounting bracket. Remove drivers side headlight, three 10mm head bolts and one plastic clip. Install ECB Quick Click harness into original harness. Run harness out from under headlight. Refit headlights as per reverse of removal. Ensure harness is not against sharp edges or moving parts.
10. Where vehicle does not have original fog lights fitted, original equipment fog light wiring will be folded and attached to radiator support and a internal switch will need to be fitted. Remove inner blank on door side of steering wheel. This blank should contain a green light wiring connector. Splice switch wires to Green / black and Green / red wires contained in green connector. Check for fuse in fuse box in left rear of engine compartment. **See figures 8, 9 and 10.**



**WORLD'S BEST
ALLOY BULLBARS**

East Coast Bullbars (ECB Pty Ltd)

Tel: 07 3897 5700

Fax: 07 3283 1168

ecb@ecb.com.au www.ecb.com.au

29 Snook St
Clontarf QLD 4019
Australia

Po Box 122
Margate QLD 4019
Australia

11. Connect ECB Quick Click fog light wiring harness (supplied) into original wiring harness.
12. Remove lower grille section taking four PK screws from behind and several plastic clips around edge and pull out from behind. Trim grille to allow mounts to fit through. Refit to plastic bumper after trim. **See figures 11 and 12.**
13. Ensure all bolts on steel mounting brackets are tight. Refit bumper as per reverse of removal. Refer step 3. Refit grille as per reverse of step 2.
14. Fit ECB LED indicator / park lights into protection bar as per instructions supplied with the LED indicator kit. **NOTE: Ensure park light is to outside. See figure 13.**
15. Attach ECB fog lights to protection bar. Place M6 x 20 bolts, spring washers (supplied) through light mount from inside and attach nut to top. Slide assembly into light mount in Protection bar and centralize light to hole.) **TIGHTEN FIRM ONLY. See figure 14.**
16. Attach 6mm clip lock trim (supplied) to top of ECB protection bar. **NOTE:** Trim off lower edge on an angle so trim will sit flush with end of protection bar. **See figures 15, 16 and 17.**
17. Attach ECB protection bar to outside of steel mounts. Use one M12 x 40 bolts, flat washers, spring washers and nuts on wire on each side on rear and M12 x 40 bolts, flat washers, spring washers and nuts for front each rear.
18. Align protection bar with vehicle. **See figures 18 and 19. TIGHTEN ALL BOLTS**
19. Attach 6mm clip lock (supplied) to air vent cut outs in protection bar with flat side to front. Start at top centre feeding hard into all corners, overlap starting point by 3-4mm and cut off, force in. Ensure start and finish cuts are square. **See figure 20.**
20. Fit 3mm clip lock trim (supplied) to air vent cut outs in protection bar skirt. **See figure 21.**
21. Connect ECB indicator / park lights and check for the correct operation.
22. Connect fog light wiring and **CHECK OPERATION.** Insert Fog light trims into Protection bar with large side to inside of protection bar.

ENSURE NUMBER PLATE IS CLEARLY VISABLE

Note: When fitting/refitting the licence plate to the vehicle, ensure there is no obstruction to licence plate vision in accordance with local authorities. If required relocate licence plate to an alternate location.

Further VFPS Notes:

- a) Do not attach VFPS to the vehicle using anchorages not intended for this purpose (e.g. engine mounting bolts).
- b) Do not use this product for any vehicle make or model, other than those specified by the VFPS manufacturer.
- c) Do not remove the plaque or label from the VFPS.
- d) Do not modify the structure of the VFPS in any way.
- e) No accessory or fitment should project forward of the VFPS forward profile.
- f) **ENSURE THESE INSTRUCTIONS ARE LEFT WITH VEHICLE OWNER AND/OR OPERATOR.**

IMPORTANT INFORMATION

Periodically check bolts and nuts for correct tightness, especially if travelling on rough roads



**WORLD'S BEST
ALLOY BULLBARS**

East Coast Bullbars (ECB Pty Ltd)

Tel: 07 3897 5700

Fax: 07 3283 1168

ecb@ecb.com.au www.ecb.com.au

29 Snook St
Clontarf QLD 4019
Australia

Po Box 122
Margate QLD 4019
Australia

FITTING KIT

1 – Steel mounting bracket.	1 – Pair ECB fog lights.
4 – M10 x 1.5 x35 bolts on wire	1 – Quick click fog light kit (IC10D40S1004ECBH)
6 – M10 x 1.5 x 40 bolts	2 – Fog light trims.
16 – M10 flat washers	2 – M6 x 20 bolts.
10 – M10 spring washers	2 – M6 nuts
10 – M10 x 1.5 nut	2 – M6 spring washers.
4 – M12 x 1.25 x 40 bolts	2 – Cable locks.
6 – M12 flat washers	2 – Female spade connectors
4 – M12 spring washers	1 – Round toggle switch (AKT71031) <i>(IN KIT)</i>
2 – M12 x 1.25 nuts	1 – 200mm length sheathed twin core wire
2 – M12 x 1.25 nuts on 300mm wire	1 – 2100mm length 6mm clip lock trim
1 – ECB LED Indicator / Park light kit	2 – 600mm lengths 6mm clip lock trim
1 – Quick Click Indi / park Harness (IC13SZVINDH)	2 – 430mm lengths 3mm clip lock trim



Figure 1



Figure 2



Figure 3



Figure 4



WORLD'S BEST
ALLOY BULLBARS

East Coast Bullbars (ECB Pty Ltd)

Tel: 07 3897 5700

Fax: 07 3283 1168

ecb@ecb.com.au www.ecb.com.au

29 Snook St
Clontarf QLD 4019
Australia

Po Box 122
Margate QLD 4019
Australia



Figure 5



Figure 6



Figure 7



Figure 8: Original equipment fog light harness

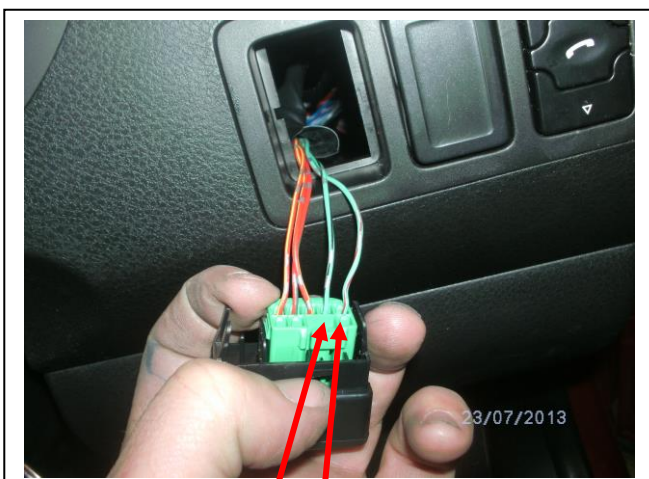


Figure 9: Required wiring in harness to install switch.

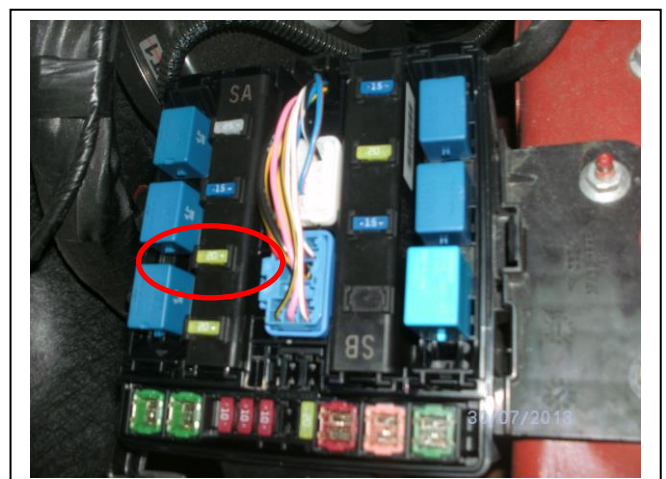


Figure 10: Check 20A fuse is installed. This fuse should be installed at factory



**WORLD'S BEST
ALLOY BULLBARS**

East Coast Bullbars (ECB Pty Ltd)

Tel: 07 3897 5700

Fax: 07 3283 1168

ecb@ecb.com.au www.ecb.com.au

29 Snook St
Clontarf QLD 4019
Australia

Po Box 122
Margate QLD 4019
Australia



Figure 11

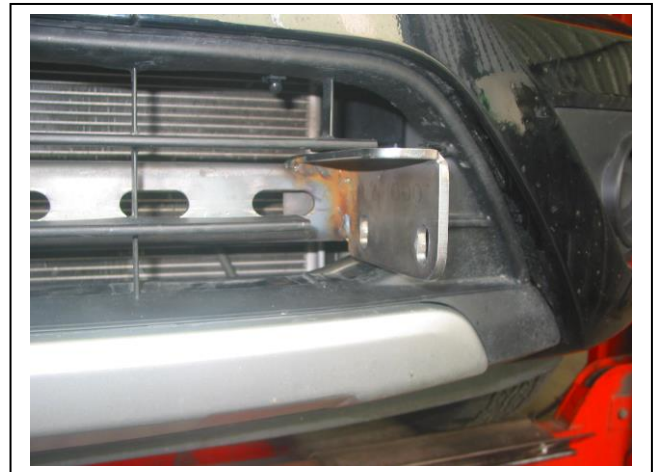
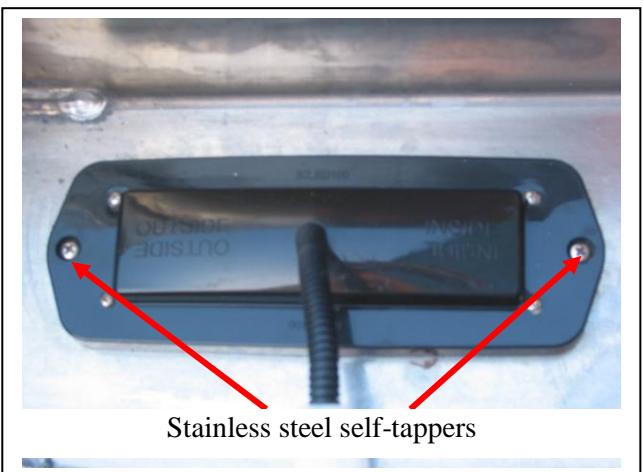
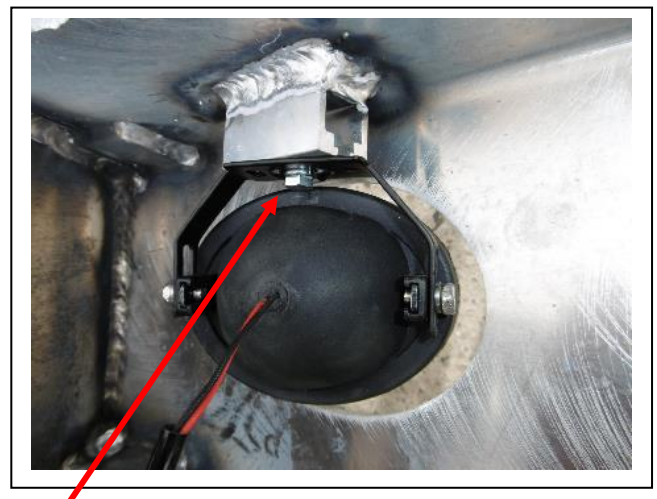


Figure 12



Stainless steel self-tappers

Figure 13



M6 bolt

Figure 14

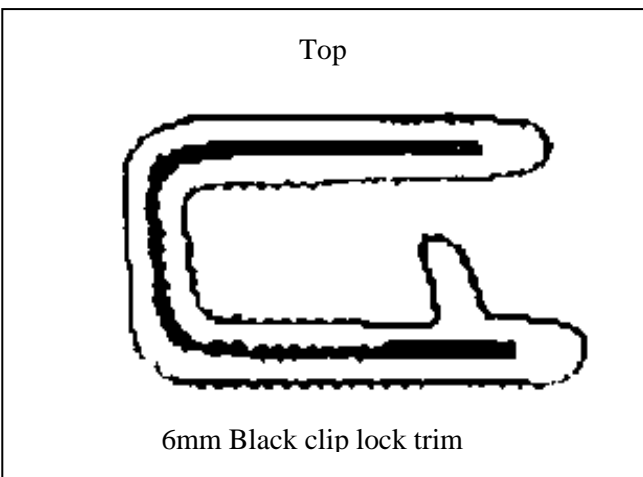
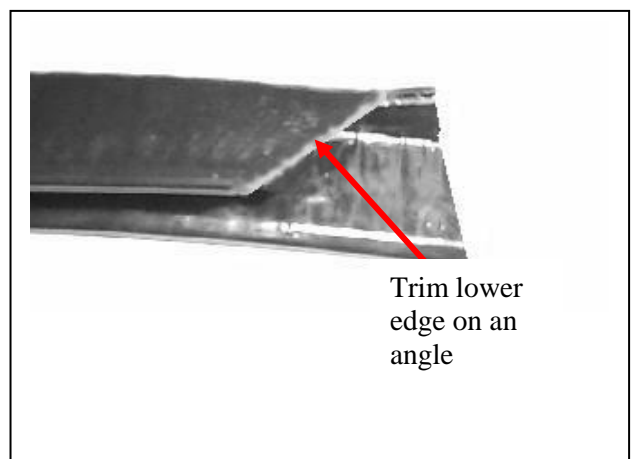


Figure 15



Trim lower edge on an angle

Figure 16



**WORLD'S BEST
ALLOY BULLBARS**

East Coast Bullbars (ECB Pty Ltd)

Tel: 07 3897 5700

Fax: 07 3283 1168

ecb@ecb.com.au www.ecb.com.au

29 Snook St
Clontarf QLD 4019
Australia

Po Box 122
Margate QLD 4019
Australia

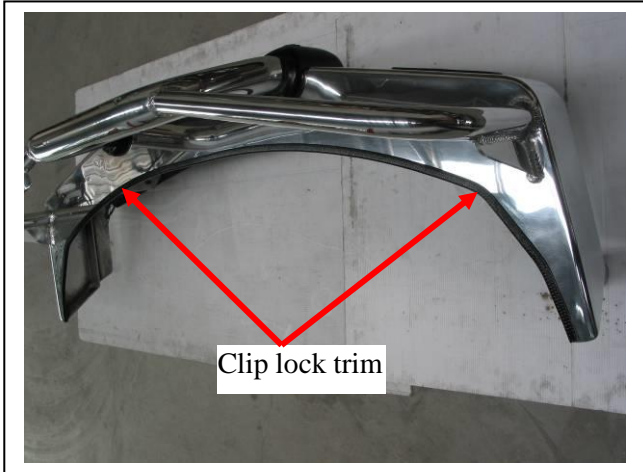


Figure 17



Figure 15



Figure 16

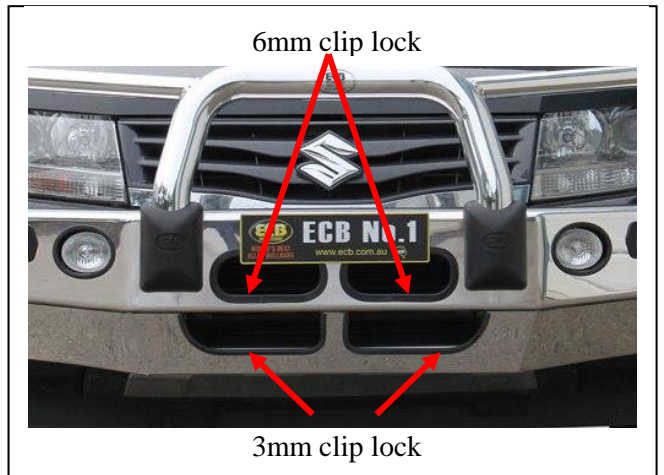


Figure 17



**WORLD'S BEST
ALLOY BULLBARS**

East Coast Bullbars (ECB Pty Ltd)

Tel: 07 3897 5700

Fax: 07 3283 1168

ecb@ecb.com.au www.ecb.com.au

29 Snook St
Clontarf QLD 4019
Australia

Po Box 122
Margate QLD 4019
Australia

We value your comments

Dear Fitter,

ECB would like to know how you went with the installation of this product. We value your comment and may need to contact you to clarify some details so please complete your contact details clearly.

We would appreciate if you could complete as many of the following details as possible.

Your Name:	Your contact No.
Product Part No.	Product Invoice No.
Product Description:	Make, model, and year of vehicle:
Product Work Order No.	Company your from/Company product purchased from:

Date of Fitment: ____/____/____

Was the fitting hardware supplied complete?

Yes

No

If no what was not supplied

Did the installation go well?

Yes

No

Please provide comments

Please draw diagrams if you need to.

Post to
Reply Paid 122
PO Box 122
Margate QLD 4019

Fax to
(07) 3283 1168



**WORLD'S BEST
ALLOY BULLBARS**

East Coast Bullbars (ECB Pty Ltd)

Tel: 07 3897 5700

Fax: 07 3283 1168

ecb@ecb.com.au www.ecb.com.au

29 Snook St
Clontarf QLD 4019
Australia

Po Box 122
Margate QLD 4019
Australia



WORLD'S BEST
ALLOY BULLBARS

East Coast Bullbars (ECB Pty Ltd)

Tel: 07 3897 5700

Fax: 07 3283 1168

ecb@ecb.com.au www.ecb.com.au

29 Snook St
Clontarf QLD 4019
Australia

Po Box 122
Margate QLD 4019
Australia

DESPATCH CHECKLIST

BSZ63SY

ICZBKCSZ63



Work Order #		See other side of this page for photos of all mounts
Finish:		
Transport:		
Due Date:		

- OC.....1 – Steel mounting brackets.
- BK.....1 – Bolt Kit
- BK.....1 – LED ECB indicator / park light kit.
- BK.....1 – Quick Click indi / park harness (IC13SZVINDH)
- BK.....1 – Pair ECB fog lights.
- BK.....1 - Quick click fog light kit (IC10D40S1004ECBH)
- BK.....2 – Fog light trims
- BK.....1 – 2040mm length 6mm clip lock.
- BK.....2 – 600mm lengths 6mm clip lock.
- BK.....2 – 430mm lengths 3mm clip lock.
- OC.....2 – ECB Overrides – **Fitted to Bar**



Is this product “the best it can be” Yes _____ / _____
Wrapper’s initials / Checker initials

If **NO** fix before continuing

All parts checked and completed by:

Nut and bolts: _____ Date __/__/__

Order control: _____ Date __/__/__

Final wrap check: _____ Date __/__/__



**WORLD'S BEST
ALLOY BULLBARS**

East Coast Bullbars (ECB Pty Ltd)

Tel: 07 3897 5700

Fax: 07 3283 1168

ecb@ecb.com.au www.ecb.com.au

29 Snook St
Clontarf QLD 4019
Australia

Po Box 122
Margate QLD 4019
Australia

