



**WORLD'S BEST
ALLOY BULLBARS**

East Coast Bullbars (ECB Pty Ltd)

Tel: 07 3897 5700

Fax: 07 3283 1168

ecb@ecb.com.au www.ecb.com.au

29 Snook St
Clontarf QLD 4019
Australia

Po Box 122
Margate QLD 4019
Australia

BSZ57SY

REPLACES: 27.07.08

REVISED: 21.07.10

FITTING INSTRUCTIONS

GRAND VITARA 08/05-08/08 BIG TUBE™ PROTECTION BAR VEHICLE FRONTAL PROTECTION SYSTEM (VFPS) FOR AIR BAG & ADR COMPLIANT VEHICLES

Check installation hardware before commencing.

Required tools: Long 10mm drill bits for mild steel

1. Lift bonnet.
2. Remove grille. Four plastic push in/out clips at top, lift upwards and slightly outwards to release off lower clips.
3. Remove bumper cover by the following: Remove two 10mm head screws (from behind grille). Remove four plastic push in/out clips from top of bumper cover / grille area. Remove two plastic push in/out clips (each side) from plastic inner guard. Remove one PK self-tapper screw (each side) from top of bumper cover side return. From along bottom of bumper cover remove three PK self-tappers, two 10mm head screws and six plastic push in/out clips.
Pull outwards at side returns to release off clips. **See figure 1.** Pull forward off vehicle.
NOTE: Unplug temp sensor wiring as removing.
4. Die grind one side of large chassis hole to allow two bolts and washers on wire to fit through. **See figure 2.**
Blow all filings clear and treat all exposed metal with a rust inhibitor.
5. For turbo diesel vehicles: Remove M6 bolt on front of chassis rail, attaching lower mount of intercooler. When sliding ECB steel mounting bracket down in Step 6, ensure mounting bracket sits behind intercooler mount.
6. Place steel mounting brackets (supplied) in from top of chassis and push down until 8mm hole in ECB steel mounting bracket aligns with captive nut on front of chassis. Attach using M6 bolt, spring washers and flat washers (supplied). **FINGER TIGHTEN ONLY. See figure 3.**
7. Align side mount plates to front of chassis rail. Using ECB steel mounting bracket as a guide, drill holes into outside of chassis rail with long 10mm drill bit. **See figure 4. Treat all exposed metal with a rust inhibitor.**
8. Bend wire to shape and feed 3/8 x 1 ¼ bolts with washer on wire (supplied) through large chassis hole and out through holes in ECB steel mounting bracket. **FINGER TIGHTEN ONLY. See figure 5.**
9. Align steel mounting bracket level. **TIGHTEN ALL BOLTS** taking care not to over tighten front M6 bolts. **See figure 6.**
10. Remove original headlight / indicator assemblies from vehicle to access wiring. Three 10mm head bolts per assembly – lift from guard side clip and pull forward off lower plastic clip. **See figure 7.** Splice ECB indicator / park light wiring into original wiring, use cable locks (supplied). Connect ECB indicators / park lights and **check operation**, once confirmed remove. Refit headlight / indicator assemblies to vehicle.
11. Fit ECB LED indicator / park lights (supplied) into protection bar as per instructions supplied with the LED indicator kit. **NOTE: Ensure park light is to outside. See figure 8.**



**WORLD'S BEST
ALLOY BULLBARS**

East Coast Bullbars (ECB Pty Ltd)

Tel: 07 3897 5700

Fax: 07 3283 1168

ecb@ecb.com.au www.ecb.com.au

29 Snook St
Clontarf QLD 4019
Australia

Po Box 122
Margate QLD 4019
Australia

12. Fit 6mm clip lock trim (supplied) to rear of protection bar. Trim underside of each end to allow top of clip lock to cover to end of protection bar. **See figures 9, 10 and 11.**
13. Trim lower grille in bumper cover to fit around steel mounting bracket. **See figure 12. NOTE:** Trim out as minimal as possible. Refit bumper cover to vehicle. **NOTE:** As installing, reconnect temp sensor and feed indicator / park light wiring and fog light wiring out through bumper cover. Ensure wiring does not get trapped between steel mounting bracket and bumper and is sufficiently insulated against shorting. Do not reconnect original equipment bumper lights
14. Fit ECB protection bar to outside of steel mounting bracket. Use ½ x 1 ½ bolts, nuts and washers (supplied). **FINGER TIGHTEN ONLY.** Feed bolts from outside.
15. Align protection bar with vehicle. **See figure 13** for front view and **figure 14** for side view. **TIGHTEN ALL BOLTS/NUTS. See figure 15.**
16. Attach 6mm clip lock (supplied) to air vent cut outs in protection bar with flat side to front. Start at top centre feeding hard into all corners, overlap starting point by 3-4mm and cut off, force in. Ensure start and finish cuts are square. **See figure 16.**
17. Fit 3mm clip lock trim (supplied) to air vent cut outs in protection bar skirt. **See figure 16.**
18. Connect indicator / park light wiring and **CHECK OPERATION.**

ENSURE NUMBER PLATE IS CLEARLY VISABLE

Note: When fitting/refitting the licence plate to the vehicle, ensure there is no obstruction to licence plate vision in accordance with local authorities. If required relocate licence plate to an alternate location.

Further VFPS Notes:

- a) Do not attach VFPS to the vehicle using anchorages not intended for this purpose (e.g. engine mounting bolts).
- b) Do not use this product for any vehicle make or model, other than those specified by the VFPS manufacturer.
- c) Do not remove the plaque or label from the VFPS.
- d) Do not modify the structure of the VFPS in any way.
- e) No accessory or fitment should project forward of the VFPS forward profile.
- f) **ENSURE THESE INSTRUCTIONS ARE LEFT WITH VEHICLE OWNER AND/OR OPERATOR.**

IMPORTANT INFORMATION

Periodically check bolts and nuts for correct tightness, especially if travelling on rough roads



East Coast Bullbars (ECB Pty Ltd)

Tel: 07 3897 5700

Fax: 07 3283 1168

ecb@ecb.com.au www.ecb.com.au

WORLD'S BEST
ALLOY BULLBARS

29 Snook St
Clontarf QLD 4019
Australia

Po Box 122
Margate QLD 4019
Australia

FITTING KIT

1 – Steel mounting bracket.	4 – M6 x 20 bolts.
4 – 3/8 x 1 1/4 bolts, washers on 200mm wire	4 – M6 flat washers.
4 – 3/8 nuts.	4 – M6 spring washers
4 – 3/8 flat washers.	2 – M6 nuts and washers on 100mm wire
4 – 3/8 spring washers.	6 – Cable locks.
4 – 1/2 x 1 1/2 bolts	1 – ECB LED Indicator / Park light kit
4 – 1/2 nuts	1 – 2040mm length 6mm clip lock.
8 – 1/2 flat washers.	2 – 600mm lengths 6mm clip lock.
4 – 1/2 spring washers.	2 – 430mm lengths 3mm clip lock.



Figure 1



Figure 2



Figure 3 – Placing steel mounting bracket, ready for installation, Turbo diesel vehicle shown.

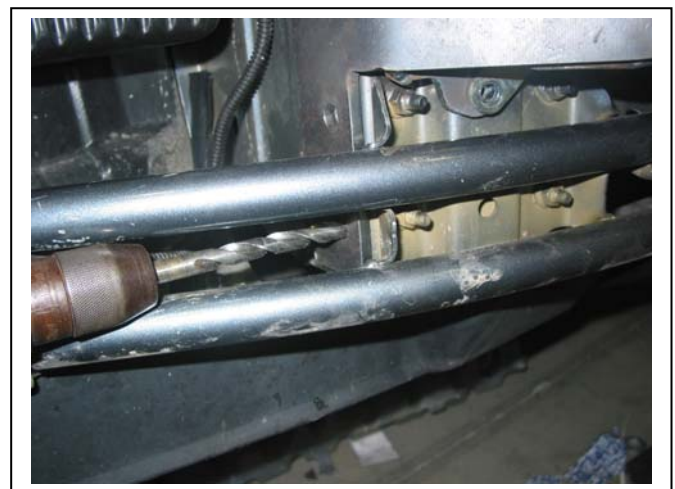


Figure 4 – Driver's side shown. Use long 10mm drill bit as required.



**WORLD'S BEST
ALLOY BULLBARS**

East Coast Bullbars (ECB Pty Ltd)

Tel: 07 3897 5700

Fax: 07 3283 1168

ecb@ecb.com.au www.ecb.com.au

29 Snook St
Clontarf QLD 4019
Australia

Po Box 122
Margate QLD 4019
Australia



Figure 5 - Drivers side shown

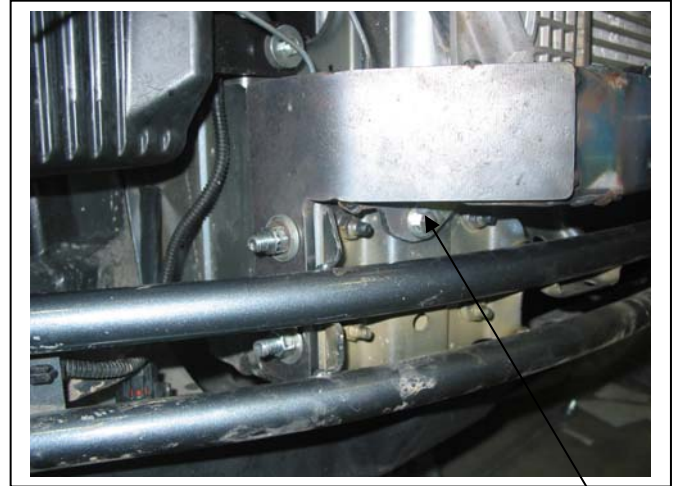
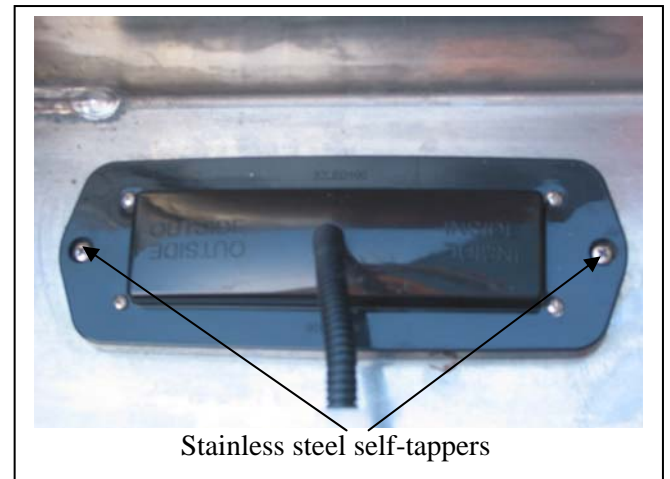


Figure 6 – Driver's side shown M6 x 20 bolt

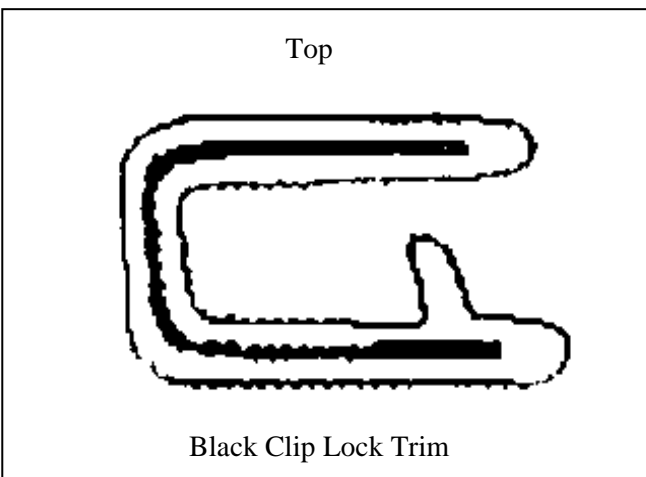


Figure 7 – Drivers side shown
Headlight assembly moved forward to access wiring



Stainless steel self-tappers

Figure 8



Top

Black Clip Lock Trim

Figure 9

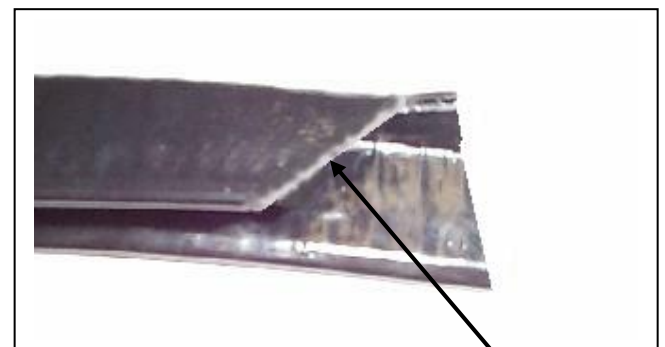


Figure 10 Trim lower edge on an angle



East Coast Bullbars (ECB Pty Ltd)

Tel: 07 3897 5700

Fax: 07 3283 1168

ecb@ecb.com.au www.ecb.com.au

WORLD'S BEST
ALLOY BULLBARS

29 Snook St
Clontarf QLD 4019
Australia

Po Box 122
Margate QLD 4019
Australia



Figure 11 – Passenger side shown



Figure 12



Figure 13 – Front view shown



Figure 14 – Side view shown



Figure 15
Impact wrench access for nuts

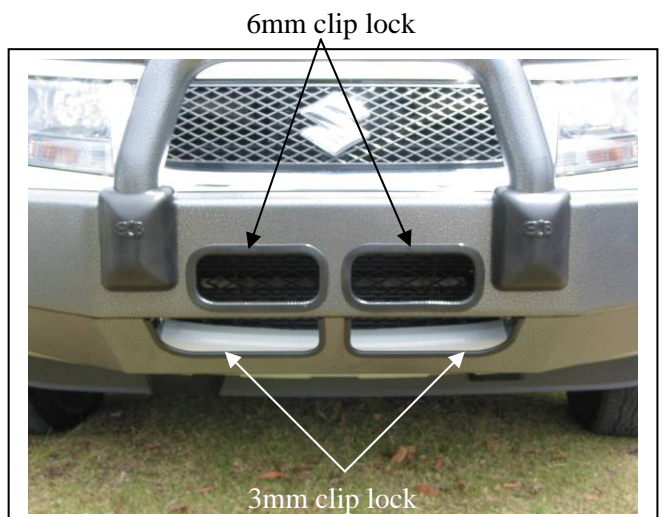


Figure 16



**WORLD'S BEST
ALLOY BULLBARS**

East Coast Bullbars (ECB Pty Ltd)

Tel: 07 3897 5700

Fax: 07 3283 1168

ecb@ecb.com.au www.ecb.com.au

29 Snook St
Clontarf QLD 4019
Australia

Po Box 122
Margate QLD 4019
Australia

We value your comments

Dear Fitter,

ECB would like to know how you went with the installation of this product. We value your comment and may need to contact you to clarify some details so please complete your contact details clearly.

We would appreciate if you could complete as many of the following details as possible.

Your Name:	Your contact No.
Product Part No.	Product Invoice No.
Product Description:	Make, model, and year of vehicle:
Product Work Order No.	Company your from/Company product purchased from:

Date of Fitment: ____/____/____

Was the fitting hardware supplied complete?

Yes

No

If no what was not supplied

Did the installation go well?

Yes

No

Please provide comments

Please draw diagrams if you need to.

Post to
Reply Paid 122
PO Box 122
Margate QLD 4019

Fax to
(07) 3283 1168



WORLD'S BEST ALLOY BULLBARS

East Coast Bullbars (ECB Pty Ltd)

Tel: 07 3897 5700

Fax: 07 3283 1168

ecb@ecb.com.au www.ecb.com.au

29 Snook St
Clontarf QLD 4019
Australia

Po Box 122
Margate QLD 4019
Australia

DESPATCH CHECKLIST BSZ57SY

Work Order #	
Finish:	
Transport:	
Due Date:	

- 1 – Steel mounting bracket.
- 1 – Bolt Kit.
- 1 – ECB LED Indicator / Park light kit.
- 1 – 2040mm length 6mm clip lock.
- 2 – 600mm lengths 6mm clip lock.
- 2 – 430mm lengths 3mm clip lock.
- 2 – ECB overrides – **Fitted to bar.**

See other side of this page for photos of all mounts



Is this product “the best it can be” Yes _____ / _____
Wrapper’s initials / Checker initials

If **NO** fix before continuing

All parts checked and completed by:

Nut and bolts: _____ Date __/__/__

Order control: _____ Date __/__/__

Final wrap check: _____ Date __/__/__



**WORLD'S BEST
ALLOY BULLBARS**

East Coast Bullbars (ECB Pty Ltd)

Tel: 07 3897 5700

Fax: 07 3283 1168

ecb@ecb.com.au www.ecb.com.au

29 Snook St
Clontarf QLD 4019
Australia

Po Box 122
Margate QLD 4019
Australia

