



**WORLD'S BEST
ALLOY BULLBARS**

East Coast Bullbars (ECB Pty Ltd)

Tel: 07 3897 5700

Fax: 07 3283 1168

ecb@ecb.com.au www.ecb.com.au

29 Snook St
Clontarf QLD 4019
Australia

Po Box 122
Margate QLD 4019
Australia

BN70SY

REPLACES: 02.03.10

REVISED: 09.07.10

FITTING INSTRUCTIONS

GU Y61 PATROL BIG TUBE™ VEHICLE FRONTAL PROTECTION SYSTEM (VFPS) FOR AIR BAG AND ADR COMPLIANT VEHICLES

Check installation hardware before commencing.

1. Remove original bumper, including all brackets and plastic panels are to be removed. Remove three 10mm head bolts each side on inner guard, three PK set screws (each side) at wheel arch return, remove and discard plastic covers and replace top 10mm head bolt. Remove plastic under guard; four 10mm head bolts on radiator support panel and four 10mm head bolts along lower bumper. Once plastic under guard is removed access one 17mm head bolt (each side) at top of chassis rail and two 19mm head bolts (each side) at chassis side.
2. Position steel mounting brackets (supplied) on outside of chassis and secure using the M12 x 35 x 1.25 bolts (supplied). **FINGER TIGHTEN ONLY. NOTE:** Certain models have one stud each side in place of captive nut. Use original nut with washers (supplied). **See figure 1.**
3. Attach two steel inner mounting brackets (supplied) to inside of steel mounts. Use 3/8 x 1 ½ bolts, nuts and washers (supplied). Then attach bracket to the top of the chassis using the M12 x 35 bolts/washers. **FINGER TIGHTEN ALL BOLTS/NUTS ONLY. See figure 2.**
4. Remove vehicle indicators and splice ECB indicator wiring to original indicator wiring. Splice ECB park light wiring to original park light wiring. Pass wiring down through inner panels. Replace indicators.
5. Attach infill trim (supplied) to top sides of ECB protection bar. **NOTE:** Trim 30mm off lower edge so trim will sit over end of protection bar. **See figures 3 and 4. Trim excess off end to follow protection bar. See figure 5. NOTE:** Seal any exposed edges of trim with silicone or similar to avoid corrosion of inner steel.
6. Fit ECB LED indicator / park lights (supplied) into protection bar as per instructions supplied with the LED indicator kit. **NOTE: Ensure park light is to outside. See figure 6.**
7. Attach round cut out surrounds (supplied) into the round cut outs on the front of the protection bar. **NOTE:** Wider part of trim faces to bottom side of cut out.
8. Position ECB protection bar to inside of steel mounting brackets. Use ½ x 1 ½ bolts/nuts (supplied). **FINGER TIGHTEN ONLY.**
9. Align protection bar with vehicle. Level at side returns. Infill trim should just make contact under headlight panel (approximately 20mm clearance). **See figure 7.**
10. Tighten steel mounting brackets to chassis. Recheck alignment. **See figure 8** for side view.
11. **TIGHTEN ALL BOLTS.**
12. Splice indicator/park light wiring into ECB indicators/park lights using cable locks (supplied). **CHECK FOR CORRECT OPERATION.**
13. Refit plastic guard to radiator support panel.



**WORLD'S BEST
ALLOY BULLBARS**

East Coast Bullbars (ECB Pty Ltd)

Tel: 07 3897 5700

Fax: 07 3283 1168

ecb@ecb.com.au www.ecb.com.au

29 Snook St
Clontarf QLD 4019
Australia

Po Box 122
Margate QLD 4019
Australia

14. Attach alloy protection plate (supplied) to plastic guard. **See figure 9.**
15. Attach alloy protection plate (supplied) to protection bar. Drill 6mm holes in protection bar to align with alloy plate. **See figure 10.** Use ¼ x 1 bolts, nuts and washers (supplied). **NOTE:** Remove centre skirt air vent for access to centre ¼ nut. **TIGHTEN ALL BOLTS AND NUTS.**

ENSURE NUMBER PLATE IS CLEARLY VISABLE

Note: When fitting/refitting the licence plate to the vehicle, ensure there is no obstruction to licence plate vision in accordance with local authorities. If required relocate licence plate to an alternate location.

Further VFPS Notes:

- a) Do not attach VFPS to the vehicle using anchorages not intended for this purpose (e.g. engine mounting bolts).
- b) Do not use this product for any vehicle make or model, other than those specified by the VFPS manufacturer.
- c) Do not remove the plaque or label from the VFPS.
- d) Do not modify the structure of the VFPS in any way.
- e) No accessory or fitment should project forward of the VFPS forward profile.
- f) **ENSURE THESE INSTRUCTIONS ARE LEFT WITH VEHICLE OWNER AND/OR OPERATOR.**

IMPORTANT INFORMATION

Periodically check bolts and nuts for correct tightness, especially if travelling on rough roads

FITTING KIT

2 – Steel outer mounting brackets.	8 – 3/8 flat washers.
2 – Steel inner mounting brackets.	3 – ¼ x 1 bolts.
1 – Alloy protection plate.	3 – ¼ nylock nuts.
6 – ½ x 1 ½ UNC bolts/nuts.	6 – ¼ flat washers.
6 – M12 x 35 x 1.25 bolts.	1 – ECB LED Indicator / Park light kit.
18 – ½ flat washers	6 – Cable locks.
12 – ½ spring washers	2 – 725mm lengths black infill trim
4 – 3/8 x 1½ bolts/nuts.	2 – Round cut out surrounds.
4 – 3/8 spring washers.	



East Coast Bullbars (ECB Pty Ltd)

Tel: 07 3897 5700

Fax: 07 3283 1168

ecb@ecb.com.au www.ecb.com.au

29 Snook St
Clontarf QLD 4019
Australia

Po Box 122
Margate QLD 4019
Australia

Outer Steel Mounting Brackets



Figure 1

Inner Steel Mounting Brackets

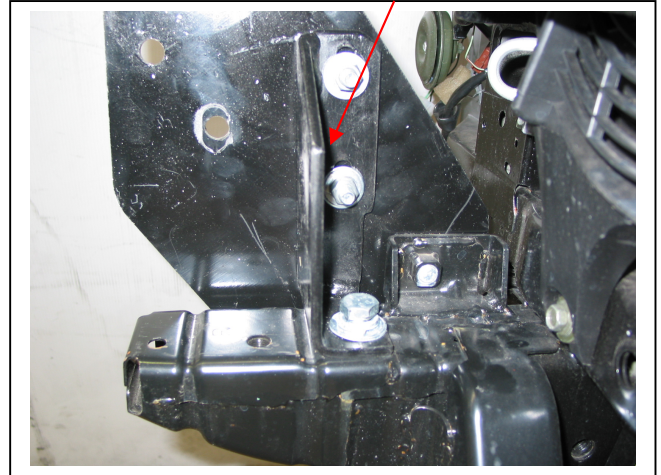


Figure 2

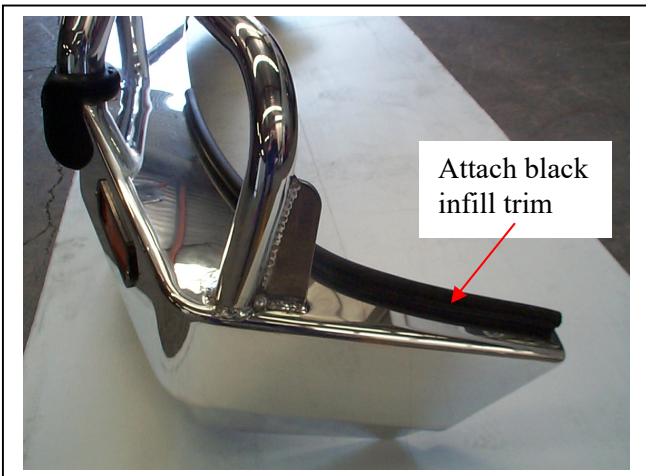


Figure 3

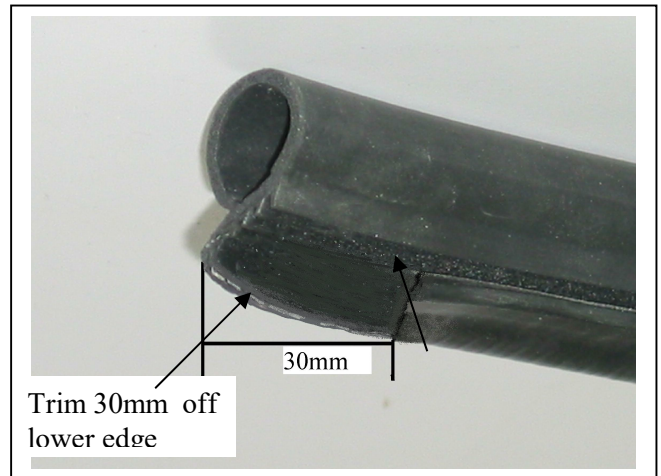


Figure 4

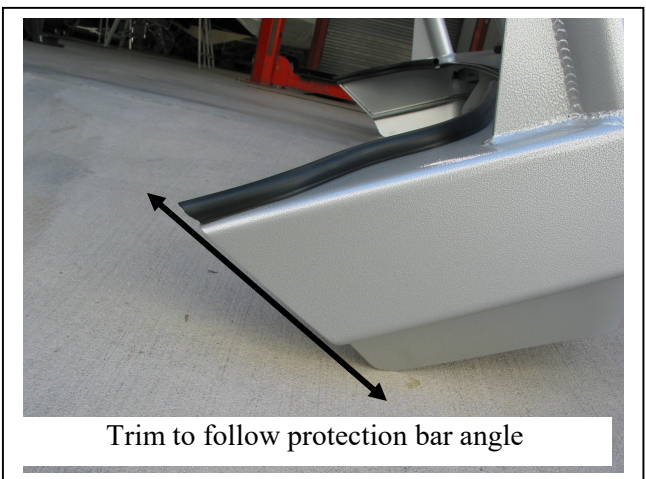


Figure 5

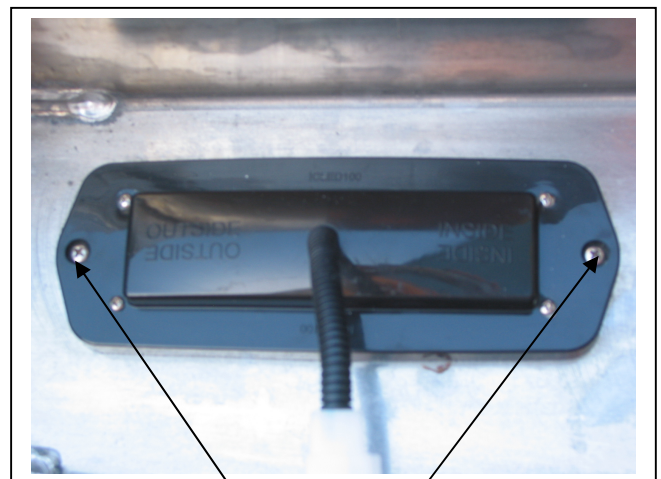


Figure 6

Stainless steel self-tappers

Note: Example only angle on bar maybe different to the above



East Coast Bullbars (ECB Pty Ltd)

Tel: 07 3897 5700

Fax: 07 3283 1168

ecb@ecb.com.au www.ecb.com.au

29 Snook St
Clontarf QLD 4019
Australia

Po Box 122
Margate QLD 4019
Australia

WORLD'S BEST
ALLOY BULLBARS

Infill trim should just make contact.

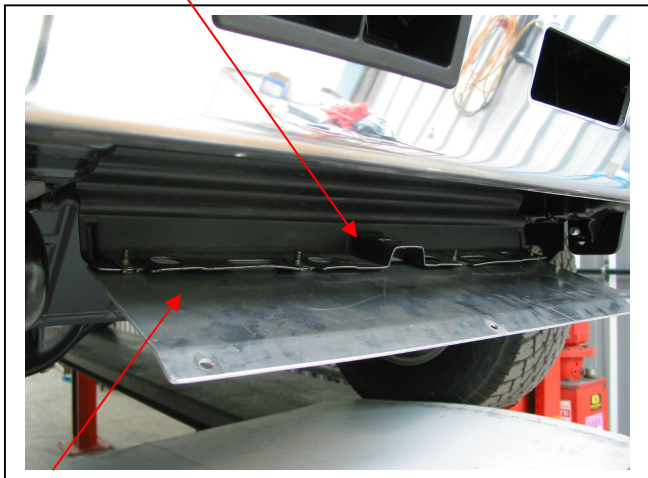


Figure 7



Figure 8

Plastic Guard



Alloy protection
plate.

Figure 9



Figure 10

Alloy protection
plate.



**WORLD'S BEST
ALLOY BULLBARS**

East Coast Bullbars (ECB Pty Ltd)

Tel: 07 3897 5700

Fax: 07 3283 1168

ecb@ecb.com.au www.ecb.com.au

29 Snook St
Clontarf QLD 4019
Australia

Po Box 122
Margate QLD 4019
Australia

We value your comments

Dear Fitter,

ECB would like to know how you went with the installation of this product. We value your comment and may need to contact you to clarify some details so please complete your contact details clearly.

We would appreciate if you could complete as many of the following details as possible.

Your Name:	Your contact No.
Product Part No.	Product Invoice No.
Product Description:	Make, model, and year of vehicle:
Product Work Order No.	Company your from/Company product purchased from:

Date of fitment: ____/____/____

Was the fitting hardware supplied complete?

Yes

No

If no what was not supplied

Did the installation go well?

Yes

No

Please provide comments

Please draw diagrams if you need to.

Post to
Reply Paid 122
PO Box 122
Margate QLD 4019

Fax to
(07) 3283 1168



**WORLD'S BEST
ALLOY BULLBARS**

East Coast Bullbars (ECB Pty Ltd)

Tel: 07 3897 5700

Fax: 07 3283 1168

ecb@ecb.com.au www.ecb.com.au

29 Snook St
Clontarf QLD 4019
Australia

Po Box 122
Margate QLD 4019
Australia



WORLD'S BEST
ALLOY BULLBARS

East Coast Bullbars (ECB Pty Ltd)

Tel: 07 3897 5700

Fax: 07 3283 1168

ecb@ecb.com.au www.ecb.com.au

29 Snook St
Clontarf QLD 4019
Australia

Po Box 122
Margate QLD 4019
Australia

DESPATCH CHECKLIST BN70SY

ICZBKCN70

* I CZBKCN70*

Work Order #	
Finish:	
Transport:	
Due Date:	

- 2 – Steel outer mounting brackets.
- 2 – Steel inner mounting brackets.
- 1 – Alloy protection plate.
- 1 – Bolt Kit.
- 1 – ECB LED Indicator / Park light kit.
- 2 – 725mm lengths black infill trim
- 2 – Round cut out surrounds.
- 2 – ECB overrides – **Fitted to bar.**
- 3 – 6mm air scoops – **Fitted to bar.**

**See other side of
this page for
photos of all
mounts**



Is this product “the best it can be” Yes _____ / _____
Wrapper’s initials / Checker initials

If **NO** fix before continuing

All parts checked and completed by:

Nut and bolts: _____ Date ___ / ___ / ___

Order control: _____ Date ___ / ___ / ___

Final wrap check: _____ Date ___ / ___ / ___



**WORLD'S BEST
ALLOY BULLBARS**

East Coast Bullbars (ECB Pty Ltd)

Tel: 07 3897 5700

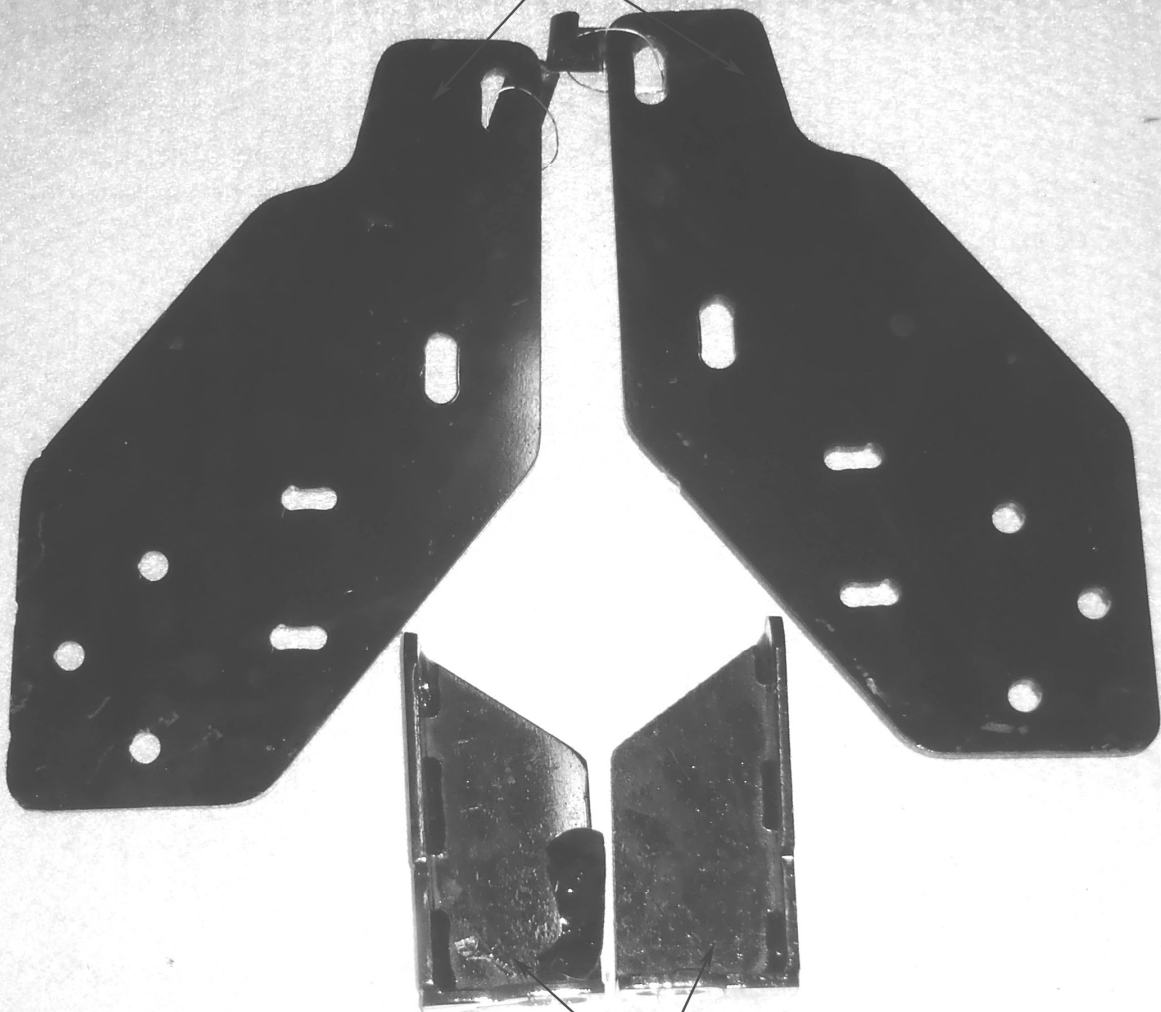
Fax: 07 3283 1168

ecb@ecb.com.au www.ecb.com.au

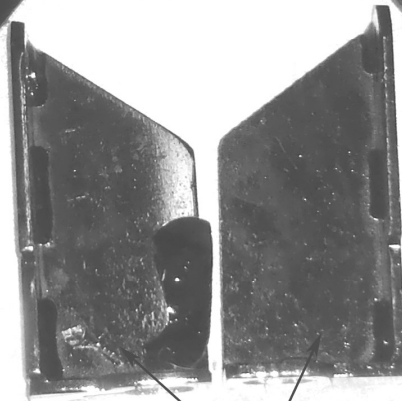
29 Snook St
Clontarf QLD 4019
Australia

Po Box 122
Margate QLD 4019
Australia

Steel outer mounting brackets



Steel inner mounting brackets



Alloy protection plate

