



WORLD'S BEST
ALLOY BULLBARS

East Coast Bullbars (ECB Pty Ltd)

Tel: 07 3897 5700

Fax: 07 3283 1168

ecb@ecb.com.au www.ecb.com.au

29 Snook St
Clontarf QLD 4019
Australia

Po Box 122
Margate QLD 4019
Australia

BN62SY

REPLACES: 08.02.10

REVISED: 29.06.10

FITTING INSTRUCTIONS

NISSAN PATHFINDER R51 07/05on ST-L & Ti MODELS & NAVARA D40 12/05- BIG TUBE™ PROTECTION BAR VEHICLE FRONTAL PROTECTION SYSTEM (VFPS) FOR AIR BAG & ADR COMPLIANT VEHICLES

Check installation hardware before commencing.

Special tools: Extra cab only: T20 Torx bit and associated driver.

1. Lift bonnet.
2. *Slide fingers behind end of grille opening in bumper skin. If there is a top panel and nut on top of chassis, skip to step 11. Discard two steel plates with captive nuts welded on supplied in fitting kit. See figure 1.*
3. Remove grille, six push pull plastic clips, four twist clips on sides and release four clips from inside lower edge. Pull grille forward to remove.
4. Remove lower plastic cover from bumper cover. Six 10mm head bolts. **See figure 2.**
5. Remove mudflaps and inner guards. Four PK screws (per side) for mudflaps, one PK screw under rear of mudflap, four PK screws around edge of guard, four push pull plastic clips on inner guard and two 10mm head bolts (per side) under front. Pull inner guard up and inward to remove. (All PK screws are T20 Torx on Extra cab) **Caution:** Stress to outer guard skin will result in damage to guard.
6. Remove bumper. In grille opening remove three plastic PK screw clips, three plastic PK screw clips from above number plate, four 10mm head bolts under bumper centre, two 10mm head bolts under bumper wings to guards (per side), pull bumper cover to sides from clips under guards and forward to release from clip under headlights.
7. Remove two 17mm head bolts from inside of bumper support (per side).
8. **EXTRA CAB AND SINGLE CAB ONLY:** Fit two ½ x 1 ½ bolts and washers on wire (supplied) into lower holes on chassis rail. Bend wire so it pushes bolt into hole. Fold wire into chassis rail.
9. Refit Bumper support using two M12 x 40 bolts, flat washers and spring washers (supplied) with ECB steel mounting plate behind bumper support. **Note:** Welded nut to rear inside of vehicle.
10. Refit bumper as per reverse of steps 3 to 7.
11. Remove towing hook from passenger side chassis. Two 17mm head bolts. **See figure 3.**
12. **Navara D40 Models only:** Using a die grinder or similar, trim out bumper section following the bumper contour as per **figures 4 and 5**, so 17mm head bolts and steel support can be fitted later.
13. **Pathfinder R51 Models only:** Remove plastic trims from bumper cover. **See figure 8.**
14. **Pathfinder R51 Models only:** Using die grinder or similar trim plastic as shown in **figure 9**, so 17mm head bolts can be removed and steel support fitted later.



**WORLD'S BEST
ALLOY BULLBARS**

East Coast Bullbars (ECB Pty Ltd)

Tel: 07 3897 5700

Fax: 07 3283 1168

ecb@ecb.com.au www.ecb.com.au

29 Snook St
Clontarf QLD 4019
Australia

Po Box 122
Margate QLD 4019
Australia

15. Grind lip off lower chassis, so steel mounting brackets will sit flat. **See figures 6 and 7.** **NOTE:** Treat all exposed metal with a rust inhibitor.
16. Place masking/protection tape on bumper.
17. Position steel mounting brackets (supplied) on chassis rails. Insert M12 x 40 rear bolts (supplied) only by two turns into captive nuts in chassis. Let steel mounting brackets hang down. **See figure 10.** Use M12 x 40 bolts, nuts and washers (supplied).
18. Trim lower plastic cover to fit around steel mounting brackets. **See figures 11 and 12.**
19. Slide lower plastic cover over steel mounting brackets. **See figure 13.** Insert front M12 x 40 bolts, nuts and washers (supplied) into captive nuts in chassis. Align steel mounting brackets with bumper. **TIGHTEN FIRM ONLY. See figure 14.**
20. Refit lower plastic cover to bumper cover. **See figures 15 and 16.**
21. Fit steel mounting supports (supplied) to where 17mm head bolts were removed. Use original bolts. **FINGER TIGHTEN ONLY.** Fit to inside of steel mounting brackets. Use ½ x 1 ½ bolts, nuts and washers (supplied). **FINGER TIGHTEN ONLY. See figures 17 and 18.**
22. Ensure steel mounting brackets are central with bumper and set at correct measurement for ECB alloy protection bar to mount outside of steel mounting brackets. **TIGHTEN ALL STEEL MOUNTING BRACKET and STEEL MOUNT SUPPORT BOLTS/NUTS.**
23. Splice ECB indicator / park light wiring into original wiring loome at rear of original headlight / indicator assembly. Use cable locks (supplied). **NOTE:** Feed ECB wiring in through bumper cover beside steel mounting brackets. **See figure 19.**
24. Fit ECB LED indicator / park lights (supplied) into protection bar as per instructions supplied with the LED indicator kit. **NOTE: Ensure park light is to outside. See figure 20.**
25. Attach 6mm clip lock trim (supplied) to rear of protection bar. **NOTE:** Trim off lower edge on an angle so trim will sit flush with end of protection bar. **See figures 21, 22, 23 & 24.**
26. Fit 6mm clip lock trim to air vent cut outs in front of protection bar. Start at top centre and feed into corners. Trim off end slightly longer than needed and force in at top to create a neat finish. **See figure 25. NOTE:** Ensure ends are cut square.
27. Fit ECB protection bar to outside of steel mounting brackets. Use ½ x 1 ½ bolts, nuts and washers (supplied). Align with vehicle. **See figures 26 and 27** for front and side views. **TIGHTEN ALL BOLTS/NUTS.** **NOTE:** Access through air vent cut outs.
28. Connect ECB indicator / park lights and **CHECK OPERATION.**
29. **NOTE:** Towing points are incorporated into steel mounting brackets. These are designed to be used together via a link for straight line towing and light snatching using an elastic type snatch rope. Always take care when towing or snatching and observe safety requirements of equipment being used.



**WORLD'S BEST
ALLOY BULLBARS**

East Coast Bullbars (ECB Pty Ltd)

Tel: 07 3897 5700

Fax: 07 3283 1168

ecb@ecb.com.au www.ecb.com.au

29 Snook St
Clontarf QLD 4019
Australia

Po Box 122
Margate QLD 4019
Australia

ENSURE THESE INSTRUCTIONS ARE LEFT WITH VEHICLE OWNER AND/OR OPERATOR

Note: When fitting/refitting the licence plate to the vehicle, ensure there is no obstruction to licence plate vision in accordance with local authorities. If required relocate licence plate to an alternate location.

NOTE POSITION OF NUMBER PLATE ON FIGURE 26

Further VFPS Notes:

- a) Do not attach VFPS to the vehicle using anchorages not intended for this purpose (e.g. engine mounting bolts).
- b) Do not use this product for any vehicle make or model, other than those specified by the VFPS manufacturer.
- c) Do not remove the plaque or label from the VFPS.
- d) Do not modify the structure of the VFPS in any way.
- e) No accessory or fitment should project forward of the VFPS forward profile.
- f) **ENSURE THESE INSTRUCTIONS ARE LEFT WITH VEHICLE OWNER AND/OR OPERATOR.**

IMPORTANT INFORMATION

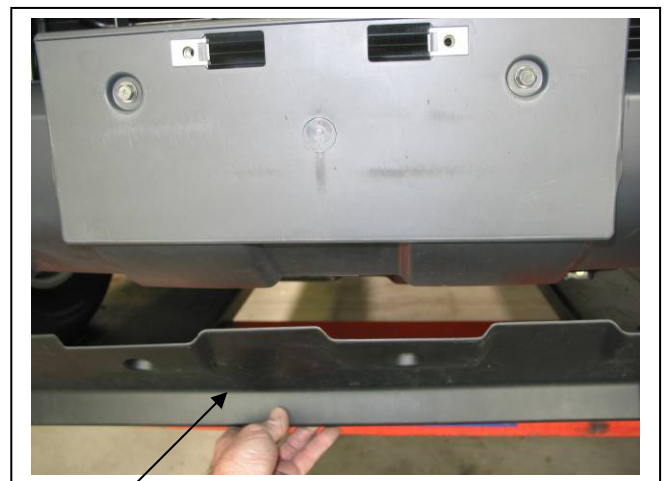
Periodically check bolts and nuts for correct tightness, especially if travelling on rough roads.

FITTING KIT

2 – Steel mounting brackets.	18 – ½ flat washers.
2 – Steel supports.	14 – ½ spring washers.
2 – Steel chassis brackets (use on Extra/Single cab only)	1 – 2200mm length 6mm clip lock.
6 – M12 x 40 x 1.25 bolts.	2 – 680mm lengths 6mm clip lock.
6 – ½ x 1 ½ bolts	1 – ECB LED Indicator / Park light kit
2 – ½ x 1 ½ bolts and washers on 300 mm wire	6 – Cable locks
8 – ½ nuts	



Figure 1 - Is a bolt on the top of the chassis behind here?



Lower plastic cover

Figure 2



**WORLD'S BEST
ALLOY BULLBARS**

East Coast Bullbars (ECB Pty Ltd)

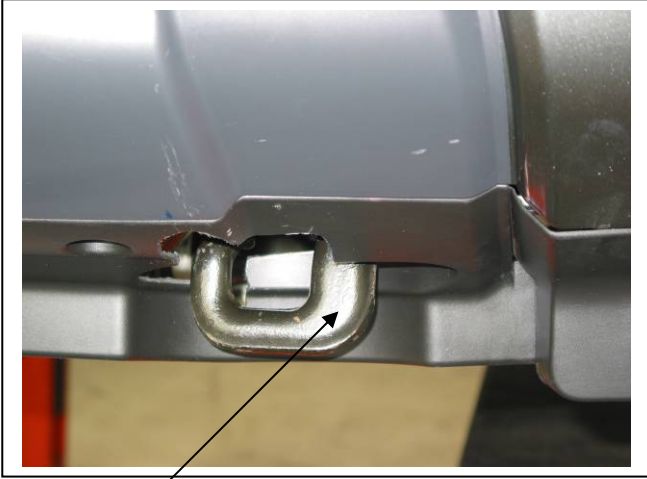
Tel: 07 3897 5700

Fax: 07 3283 1168

ecb@ecb.com.au www.ecb.com.au

29 Snook St
Clontarf QLD 4019
Australia

Po Box 122
Margate QLD 4019
Australia



Remove tow hook **Figure 3**



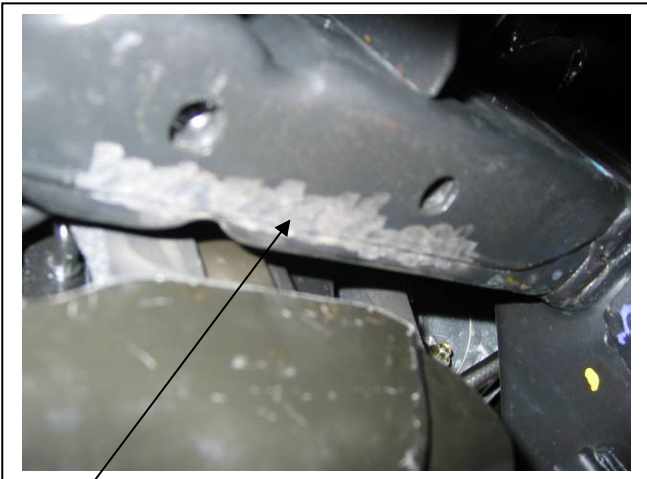
Figure 4 – Navara D40 Only – Before section is trimmed



Figure 5 – Navara D40 Only – After section is trimmed



Air grinder **Figure 6**



Chassis lip ground flush **Figure 7**



Figure 8 – Pathfinder R51 Model Only



**WORLD'S BEST
ALLOY BULLBARS**

East Coast Bullbars (ECB Pty Ltd)

Tel: 07 3897 5700

Fax: 07 3283 1168

ecb@ecb.com.au www.ecb.com.au

29 Snook St
Clontarf QLD 4019
Australia

Po Box 122
Margate QLD 4019
Australia

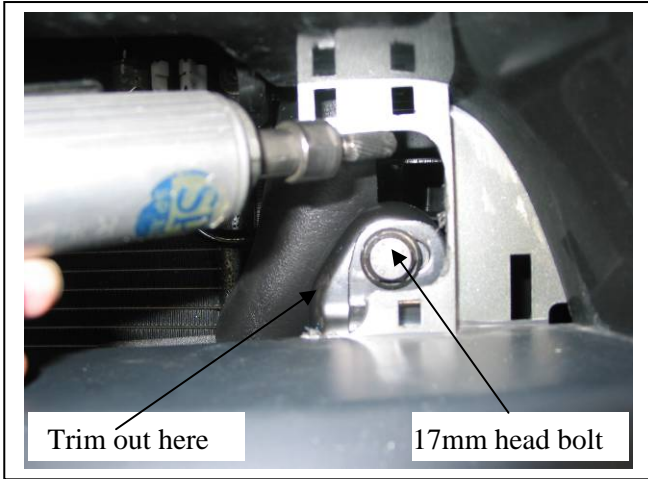


Figure 9 – Pathfinder R51 Model only



Figure 10– Passenger side shown



Figure 11 – Trim driver's side to match original passenger side cut out

Trim out to fit around steel mounting brackets



Figure 12



Lower plastic guard **Figure 13**



Figure 14



**WORLD'S BEST
ALLOY BULLBARS**

East Coast Bullbars (ECB Pty Ltd)

Tel: 07 3897 5700

Fax: 07 3283 1168

ecb@ecb.com.au www.ecb.com.au

29 Snook St
Clontarf QLD 4019
Australia

Po Box 122
Margate QLD 4019
Australia



Trimmed area

Figure 15



Lower plastic
cover refitted

Figure 16

Steel support

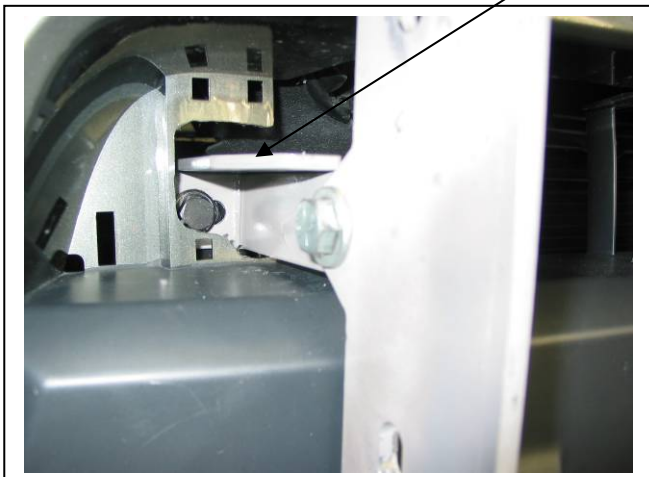
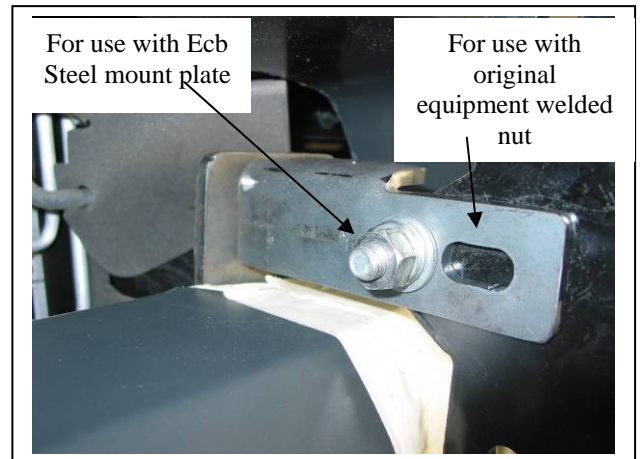


Figure 17 – Drivers side shown



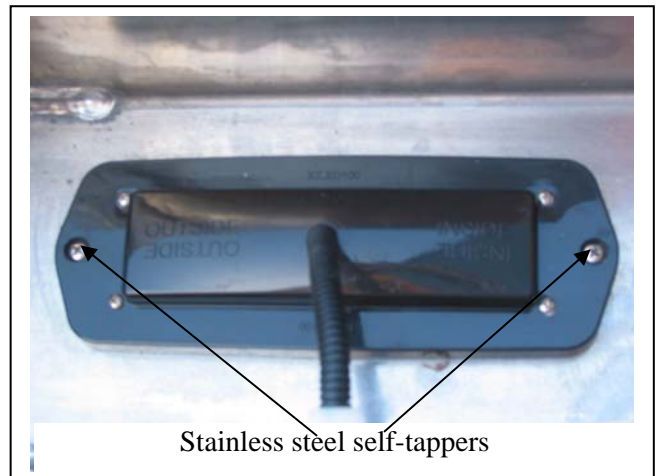
For use with Ecb
Steel mount plate

For use with
original
equipment
welded
nut

**Figure 18 – Passenger side shown fitted to extra
cab vehicle**



Figure 19



Stainless steel self-tappers

Figure 20



**WORLD'S BEST
ALLOY BULLBARS**

East Coast Bullbars (ECB Pty Ltd)

Tel: 07 3897 5700

Fax: 07 3283 1168

ecb@ecb.com.au www.ecb.com.au

29 Snook St
Clontarf QLD 4019
Australia

Po Box 122
Margate QLD 4019
Australia

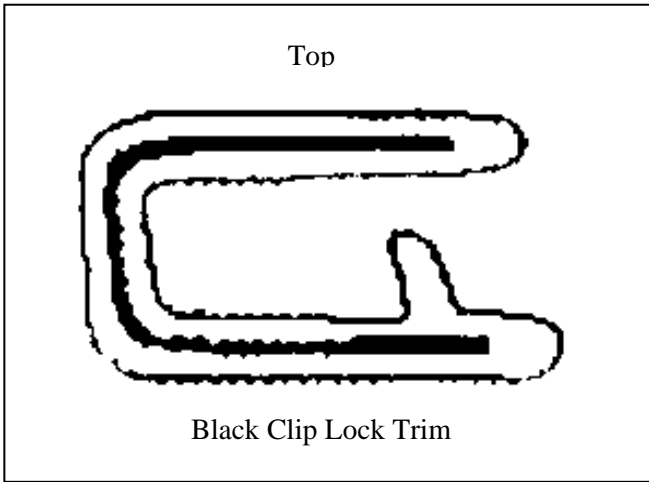
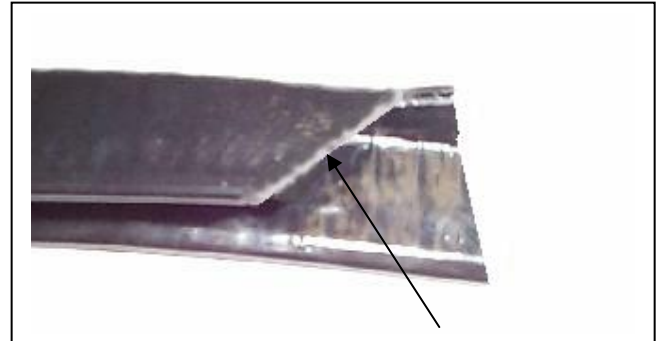


Figure 21



Trim lower edge on an angle

Figure 22



Figure 23



Figure 24



Figure 25



Figure 26 - Front views shown



**WORLD'S BEST
ALLOY BULLBARS**

East Coast Bullbars (ECB Pty Ltd)

Tel: 07 3897 5700

Fax: 07 3283 1168

ecb@ecb.com.au www.ecb.com.au

29 Snook St
Clontarf QLD 4019
Australia

Po Box 122
Margate QLD 4019
Australia



Figure 28 – Side view shown



**WORLD'S BEST
ALLOY BULLBARS**

East Coast Bullbars (ECB Pty Ltd)

Tel: 07 3897 5700

Fax: 07 3283 1168

ecb@ecb.com.au www.ecb.com.au

29 Snook St
Clontarf QLD 4019
Australia

Po Box 122
Margate QLD 4019
Australia

We value your comments

Dear Fitter,

ECB would like to know how you went with the installation of this product. We value your comment and may need to contact you to clarify some details so please complete your contact details clearly.

We would appreciate if you could complete as many of the following details as possible.

Your Name:	Your contact No.
Product Part No.	Product Invoice No.
Product Description:	Make, model, and year of vehicle:
Product Work Order No.	Company your from/Company product purchased from:

Date of Fitment: ____/____/____

Was the fitting hardware supplied complete?

Yes

No

If no what was not supplied

Did the installation go well?

Yes

No

Please provide comments

Please draw diagrams if you need to.

Post to
Reply Paid 122
PO Box 122
Margate QLD 4019

Fax to
(07) 3283 1168



**WORLD'S BEST
ALLOY BULLBARS**

East Coast Bullbars (ECB Pty Ltd)

Tel: 07 3897 5700

Fax: 07 3283 1168

ecb@ecb.com.au www.ecb.com.au

29 Snook St
Clontarf QLD 4019
Australia

Po Box 122
Margate QLD 4019
Australia



WORLD'S BEST
ALLOY BULLBARS

East Coast Bullbars (ECB Pty Ltd)

Tel: 07 3897 5700

Fax: 07 3283 1168

ecb@ecb.com.au www.ecb.com.au

29 Snook St
Clontarf QLD 4019
Australia

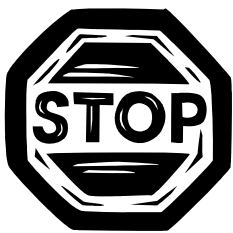
Po Box 122
Margate QLD 4019
Australia

DESPATCH CHECKLIST BN62SY

Work Order #	
Finish:	
Transport:	
Due Date:	

- 2 – Steel Chassis mounting brackets.
- 2 – Steel chassis nut plates
- 2 – Steel top mounts
- 1 – Bolt Kit
- 1 – ECB LED Indicator / Park light kit.
- 1 – 2200 Length 6mm clip lock
- 2 – 680 lengths 6mm clip lock
- 2 – ECB Overriders – **Fitted to Bar**
- 3 – 3mm air vents – **Fitted in Bar**

**See other side of
this page for
photos of all
mounts**



Is this product “the best it can be” Yes _____/_____

Wrapper's initials / Checker initials

If **NO** fix before continuing

All parts checked and completed by:

Nut and bolts: _____ Date __/__/__

Order control: _____ Date __/__/__

Final wrap check: _____ Date __/__/__



**WORLD'S BEST
ALLOY BULLBARS**

East Coast Bullbars (ECB Pty Ltd)

Tel: 07 3897 5700

Fax: 07 3283 1168

ecb@ecb.com.au www.ecb.com.au

29 Snook St
Clontarf QLD 4019
Australia

Po Box 122
Margate QLD 4019
Australia

