



**WORLD'S BEST
ALLOY BULLBARS**

East Coast Bullbars (ECB Pty Ltd)

Tel: 07 3897 5700

Fax: 07 3283 1168

ecb@ecb.com.au www.ecb.com.au

29 Snook St
Clontarf QLD 4019
Australia

Po Box 122
Margate QLD 4019
Australia

BN36SY

REPLACES: 26.10.04

REVISED: 17.01.18

FITTING INSTRUCTIONS

GU PATROL 10/04 ON BIG TUBE™ PROTECTION BAR WITH FOG LIGHTS VEHICLE FRONTAL PROTECTION SYSTEM (VFPS) FOR AIR BAG AND ADR COMPLIANT VEHICLES

Check installation hardware before commencing.

1. Remove original bumper, including all brackets. Plastic panels are to be removed. Remove three 10mm head bolts each side on inner guard, three PK set screws (each side) at wheel arch return, remove and discard plastic covers and replace top 10mm head bolt. Remove four 10mm head bolts along lower bumper (**Not required on 4.8lt & 4.2lt turbo diesel models**). Remove one 17mm head bolt (each side) at top of chassis rail and two 19mm head bolts (each side) at chassis side. Loosen two 12mm head bolts (each side) on top of chassis bracket to allow bumper to drop below grille for removal.
NOTE: Access to 17mm and 12mm head bolts is through front of bumper.
2. Position steel mounting brackets (supplied) on outside of chassis and secure using the M12 x 35 x 1.25 bolts and washers (supplied). **FINGER TIGHTEN ONLY. See figure 1. NOTE:** Certain models have one stud each side in place of captive nut. Use original nut with washers (supplied).
3. Attach two steel inner mounting brackets (supplied) to inside of steel mounts. Use 3/8 x 1 ½ bolts, nuts and washers (supplied). Then attach bracket to the top of the chassis using the M12 x 35 1.25 bolts and washers (supplied). **FINGER TIGHTEN ALL BOLTS/NUTS ONLY. See figures 2 and 3.**
4. Splice ECB indicator wiring to original indicator wiring. Splice ECB park light wiring to original park light wiring. Use cable locks (supplied). Pass wiring down through inner panels.
NOTE: Original indicator access is on connection at rear bottom of headlight, access park light wiring behind headlight.
5. Attach 6mm clip lock trim (supplied) to centre of protection bar. **See figure 4.** Attach infill trim (supplied) to top sides of ECB protection bar, **See figure 5. NOTE:** Trim 30mm off lower edge so trim will sit over end of protection bar. **See figures 6 and 7. Trim excess off end to follow protection bar NOTE:** Infill trim is to sit over clip lock trim by 25mm., **See figure 8. NOTE:** Seal any exposed edges of trim with silicone or similar to avoid corrosion of inner steel.
6. Fit ECB LED indicator / park lights into protection bar as per instructions supplied with the LED indicator kit.
NOTE: Ensure park light is to outside. See figure 9.
7. Attach ECB fog lights to protection bar. Place M6 x 20 bolts, spring washers (supplied) through light mount from inside and attach nut to top. Slide assembly into light mount in Protection bar and centralize light to hole.
TIGHTEN FIRM ONLY. Do not fit fog light trims to protection bar at this point. **See figure 10.**
8. Attach round cut out surrounds (supplied) into the round cut outs on the front of the protection bar. **NOTE: Wider part of trim faces to bottom side of cut out.**
9. Position ECB protection bar to inside of steel mounting brackets. Use ½ x 1 ½ bolts, nuts and washers (supplied). **FINGER TIGHTEN ONLY.**



**WORLD'S BEST
ALLOY BULLBARS**

East Coast Bullbars (ECB Pty Ltd)

Tel: 07 3897 5700

Fax: 07 3283 1168

ecb@ecb.com.au www.ecb.com.au

29 Snook St
Clontarf QLD 4019
Australia

Po Box 122
Margate QLD 4019
Australia

10. Align protection bar with vehicle. Level at side returns. Infill trim should just make contact under head light - side returns. **See figure 11.** Rear of protection bar will position up in front of grille. **See figure 12.**
11. Tighten steel mounting brackets to chassis. Recheck alignment. **See figure 13 and 14.**
12. **TIGHTEN ALL BOLTS.**
13. Connect ECB indicator/park lights and ECB fog lamps. **CHECK OPERATION.**
NOTE: Splice original fog light wiring to ECB fog lights. Use cable locks (supplied). On vehicles with no original fog lights. Use wiring kit supplied with fog light kit.
14. Aim fog lights just below low beam and **TIGHTEN all fog light bolts.**
15. Fit ECB fog light trims (supplied) to protection bar. **NOTE:** Wider part of trim faces to centre.
16. Attach alloy protection plate (supplied) to plastic guard. **See figure 15. Not required on 4.8lt and 4.2lt turbo diesel models.**
17. **ALL MODELS:** Attach alloy protection plate (supplied) to protection bar. Drill 6mm holes in protection bar to align with alloy plate. **See figure 16 and 17.** Use ¼ x 1 bolts, nuts and washers (supplied). **NOTE:** Remove centre skirt air vent for access to centre ¼ nut. **TIGHTEN ALL BOLTS AND NUTS. NOTE:** On 4.8lt and 4.2lt turbo diesel models ensure ECB air vents in skirt have ECB logo at bottom to direct air to lower radiator. **See figure 18.**

Note: When fitting/refitting the licence plate to the vehicle, ensure there is no obstruction to licence plate vision in accordance with local authorities. If required relocate licence plate to an alternate location.

Further VFPS Notes:

- a) Do not attach VFPS to the vehicle using anchorages not intended for this purpose (e.g. engine mounting bolts).
- b) Do not use this product for any vehicle make or model, other than those specified by the VFPS manufacturer.
- c) Do not remove the plaque or label from the VFPS.
- d) Do not modify the structure of the VFPS in any way.
- e) No accessory or fitment should project forward of the VFPS forward profile.
- f) **ENSURE THESE INSTRUCTIONS ARE LEFT WITH VEHICLE OWNER AND/OR OPERATOR.**



East Coast Bullbars (ECB Pty Ltd)

Tel: 07 3897 5700

Fax: 07 3283 1168

ecb@ecb.com.au www.ecb.com.au

29 Snook St
Clontarf QLD 4019
Australia

Po Box 122
Margate QLD 4019
Australia

**WORLD'S BEST
ALLOY BULLBARS**

FITTING KIT

2 – Steel outer mounting brackets.	6 – ¼ flat washers.
2 – Steel inner mounting brackets.	1 – ECB LED Indicator / Park light kit.
1 – Alloy protection plate.	2 – ECB fog light and wiring kit
6 – ½ x 1 ½ unc bolts/nuts.	2 – ECB fog light trims.
6 – M12 x 35 x 1.25 bolts.	2 – M6 x 20 bolts.
18 x ½ flat washers	2 – M6 nuts
12 – ½ spring washers	2 – M6 flat washers.
4 – 3/8 x 1 ½ bolts/nuts.	2 – M6 spring washers.
4 – 3/8 spring washers.	10 – Cable locks.
8 – 3/8 flat washers.	2 – 725mm lengths black infill trim
3 – ¼ x 1 bolts.	1 – 1100mm length 6mm black clip lock trim.
3 – ¼ nylock nuts.	2 – Round cut out surrounds (same as fog light trims).



Figure 1

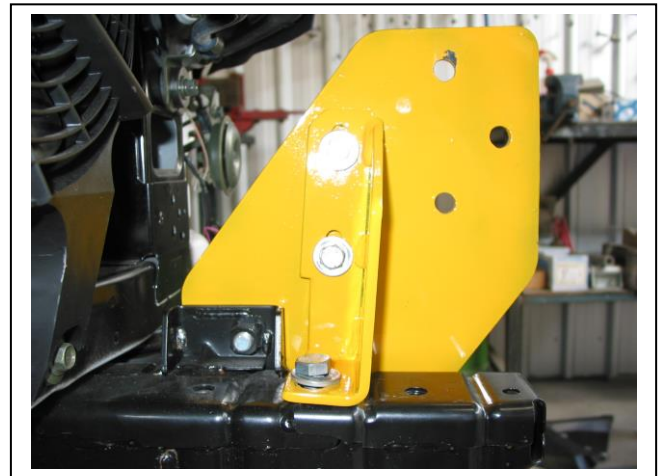
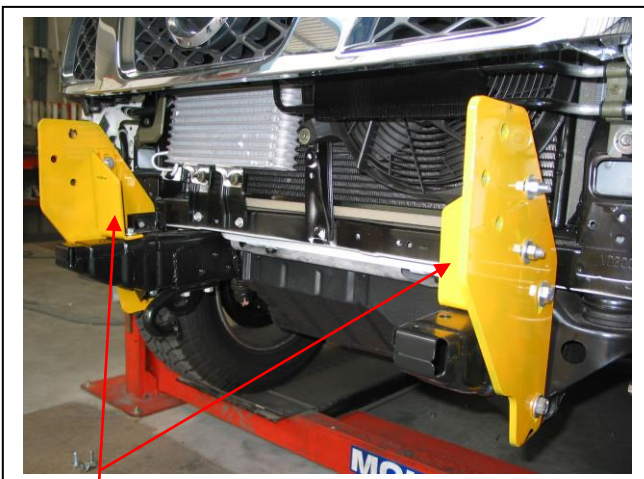
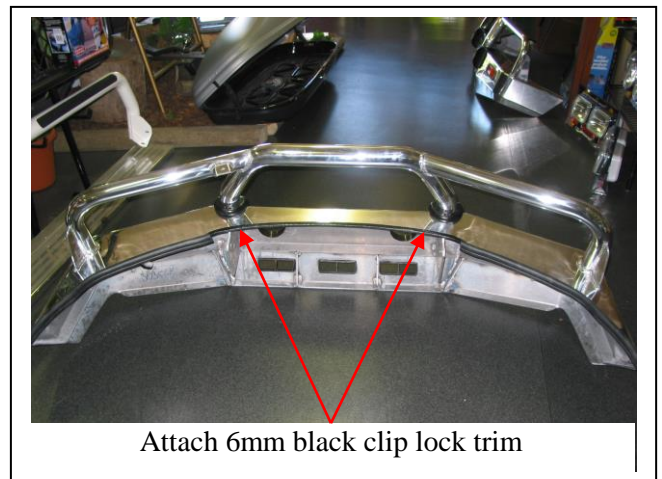


Figure 2



Inner steel
mounting brackets

Figure 3



Attach 6mm black clip lock trim

Figure 4



East Coast Bullbars (ECB Pty Ltd)

Tel: 07 3897 5700

Fax: 07 3283 1168

ecb@ecb.com.au www.ecb.com.au

29 Snook St
Clontarf QLD 4019
Australia

Po Box 122
Margate QLD 4019
Australia

WORLD'S BEST
ALLOY BULLBARS



Figure 5

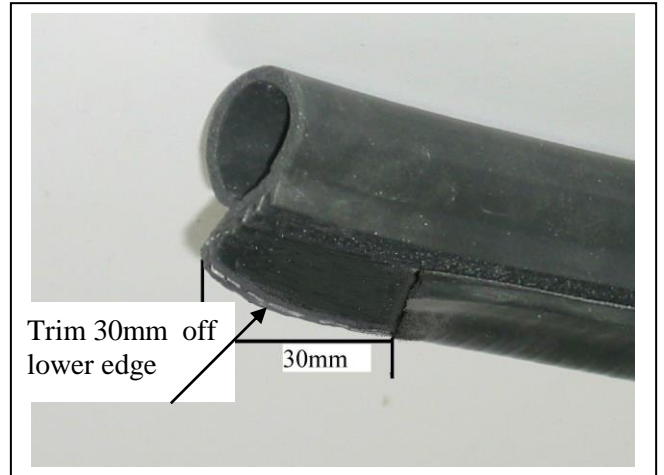


Figure 6

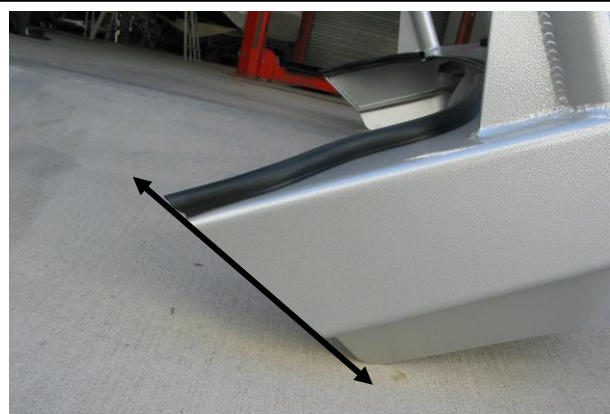


Figure 7

Note: Example only angle on bar maybe different to the above

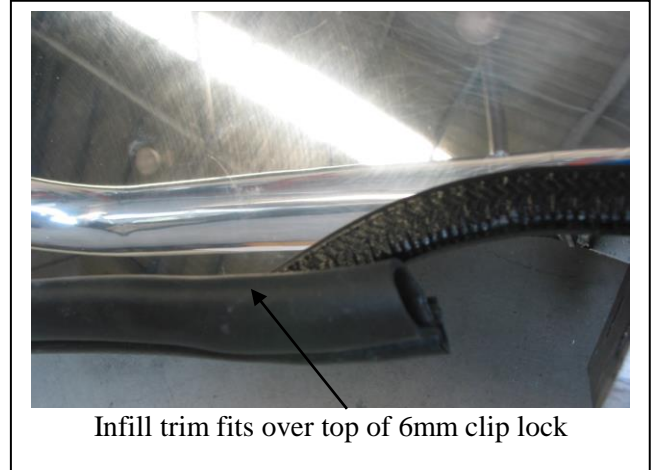


Figure 8

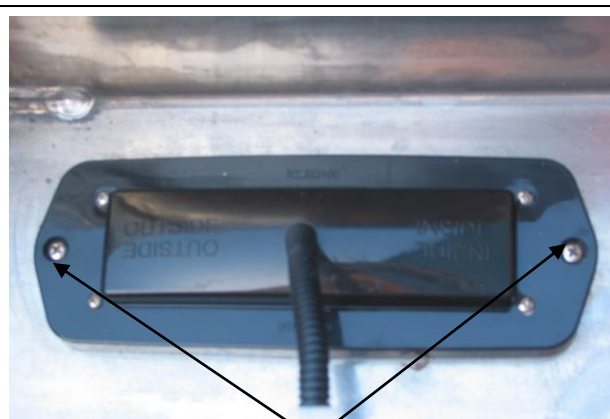
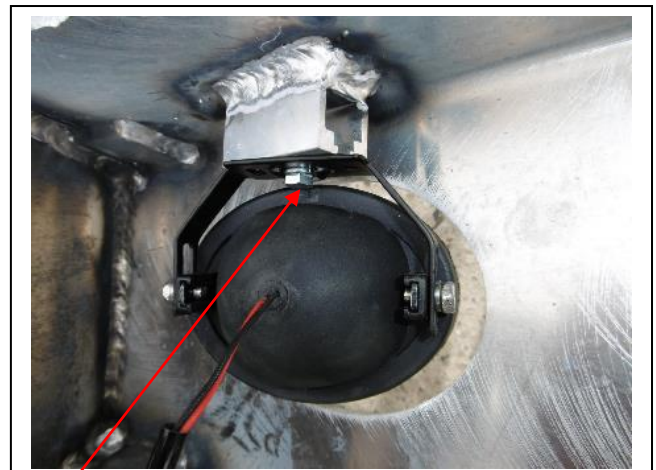


Figure 9



M6 bolt

Figure 10



East Coast Bullbars (ECB Pty Ltd)

Tel: 07 3897 5700

Fax: 07 3283 1168

ecb@ecb.com.au www.ecb.com.au

29 Snook St
Clontarf QLD 4019
Australia

Po Box 122
Margate QLD 4019
Australia

WORLD'S BEST
ALLOY BULLBARS



Infill trim should just make contact

Figure 11



Figure 12



Figure 13

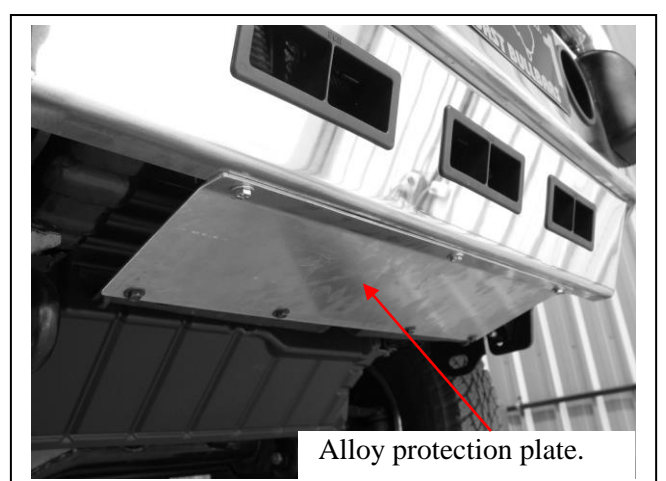


Figure 14



Alloy protection plate.

Figure 15 - 3lt turbo diesel model shown



Alloy protection plate.

Figure 16 - 3lt turbo diesel model shown



**WORLD'S BEST
ALLOY BULLBARS**

East Coast Bullbars (ECB Pty Ltd)

Tel: 07 3897 5700

Fax: 07 3283 1168

ecb@ecb.com.au www.ecb.com.au

29 Snook St
Clontarf QLD 4019
Australia

Po Box 122
Margate QLD 4019
Australia



Figure 16 - 4.8lt petrol/4.2lt turbo diesel model shown



Figure 17 - Air direction for 4.8lt and 4.2lt turbo diesel models



**WORLD'S BEST
ALLOY BULLBARS**

East Coast Bullbars (ECB Pty Ltd)

Tel: 07 3897 5700

Fax: 07 3283 1168

ecb@ecb.com.au www.ecb.com.au

29 Snook St
Clontarf QLD 4019
Australia

Po Box 122
Margate QLD 4019
Australia

We value your comments

Dear Fitter,

ECB would like to know how you went with the installation of this product. We value your comment and may need to contact you to clarify some details so please complete your contact details clearly.

We would appreciate if you could complete as many of the following details as possible.

Your Name:	Your contact No.
Product Part No.	Product Invoice No.
Product Description:	Make, model, and year of vehicle:
Product Work Order No.	Company your from/Company product purchased from:

Date of fitment: ____/____/____

Was the fitting hardware supplied complete?

Yes

No

If no what was not supplied

Did the installation go well?

Yes

No

Please provide comments

Please draw diagrams if you need to.

Post to
Reply Paid 122
PO Box 122
Margate QLD 4019

Fax to
(07) 3283 1168



**WORLD'S BEST
ALLOY BULLBARS**

East Coast Bullbars (ECB Pty Ltd)

Tel: 07 3897 5700

Fax: 07 3283 1168

ecb@ecb.com.au www.ecb.com.au

29 Snook St
Clontarf QLD 4019
Australia

Po Box 122
Margate QLD 4019
Australia



WORLD'S BEST
ALLOY BULLBARS

East Coast Bullbars (ECB Pty Ltd)

Tel: 07 3897 5700

Fax: 07 3283 1168

ecb@ecb.com.au www.ecb.com.au

29 Snook St
Clontarf QLD 4019
Australia

Po Box 122
Margate QLD 4019
Australia

DESPATCH CHECKLIST BN36SY

ICZBKCN36



Work Order #	
Finish:	
Transport:	
Due Date:	

- 2 – Steel outer mounting brackets.
- 2 – Steel inner Mounting Brackets
- 1 - Alloy protection plate
- 1 – Bolt Kit
- 1 – ECB LED Indicator / Park light kit.
- 1 – Fog light kit.
- 2 – 725mm lengths black infill trim
- 1 – 1100mm length 6mm black clip lock trim
- 4 – Round cut out Surrounds
- 2 – ECB Overriders – **Fitted to bar**
- 3 – 6mm Air Scoops – **Fitted to bar**

**See other side of
this page for
photos of all
mounts**



Is this product “the best it can be” Yes _____/_____
Wrapper’s initials / Checker initials

If **NO** fix before continuing

All parts checked and completed by:

Nut and bolts: _____ Date __/__/__

Order control: _____ Date __/__/__

Final wrap check: _____ Date __/__/__



**WORLD'S BEST
ALLOY BULLBARS**

East Coast Bullbars (ECB Pty Ltd)

Tel: 07 3897 5700

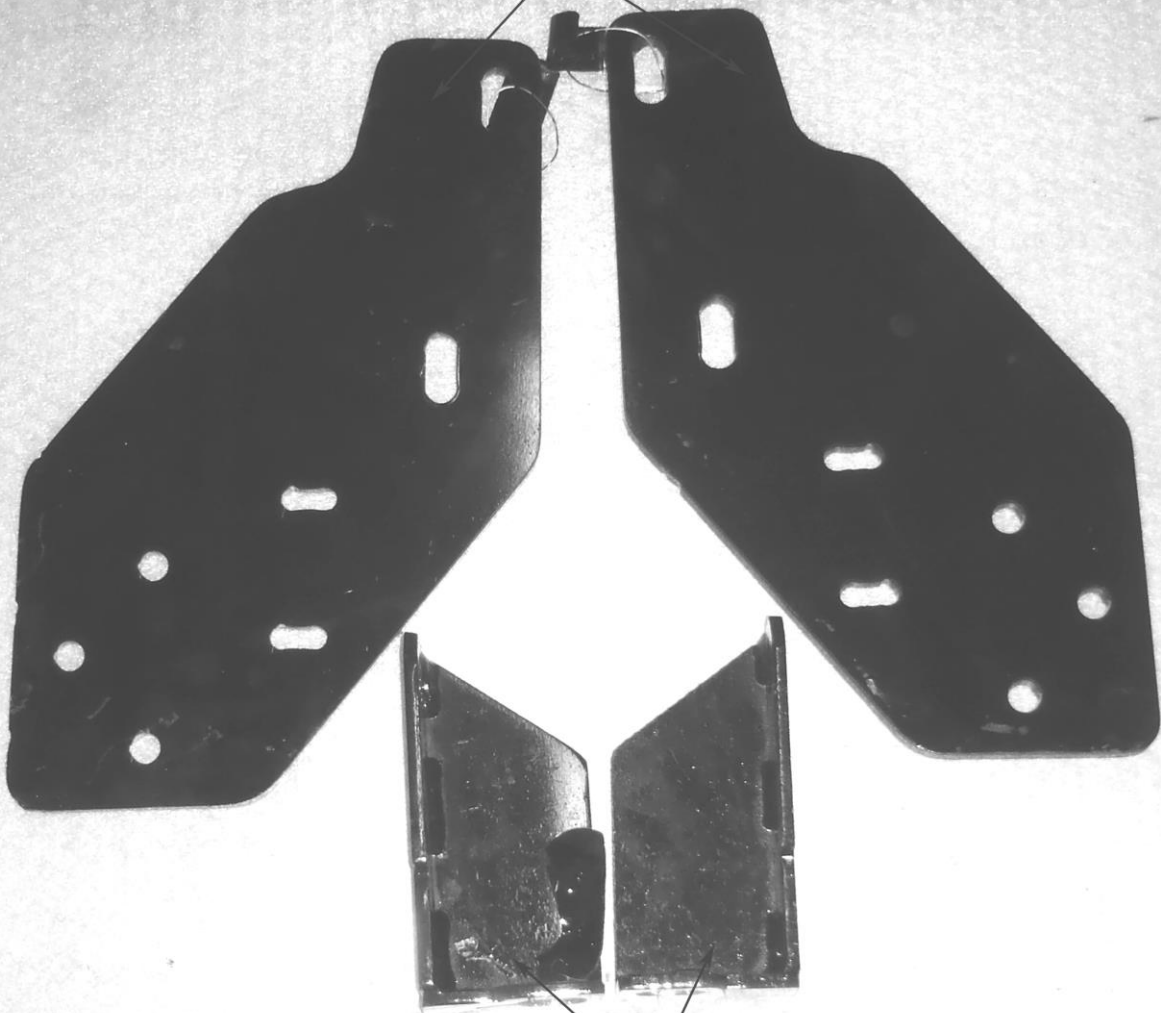
Fax: 07 3283 1168

ecb@ecb.com.au www.ecb.com.au

29 Snook St
Clontarf QLD 4019
Australia

Po Box 122
Margate QLD 4019
Australia

Steel outer mounting brackets



Steel inner mounting brackets

Alloy protection plate

