



**WORLD'S BEST
ALLOY BULLBARS**

East Coast Bullbars (ECB Pty Ltd)

Tel: 07 3897 5700

Fax: 07 3283 1168

ecb@ecb.com.au www.ecb.com.au

29 Snook St
Clontarf QLD 4019
Australia

Po Box 122
Margate QLD 4019
Australia

BN160SY

REPLACES: 00.00.00

REVISED: 24.01.18

FITTING INSTRUCTIONS

NISSAN PATHFINDER 10 – 13 ON BIG TUBE PROTECTION BAR VEHICLE FRONTAL PROTECTION SYSTEM (VFPS) FOR AIR BAG & ADR COMPLIANT VEHICLES

Check installation hardware before commencing.

1. Lift bonnet.
2. Remove radiator cover, 13 push pull plastic clips.
3. Gently pull grille forward at top corners to release clips on sides of headlights. **See figure 1.** Disconnect camera in bottom of badge (if fitted). Starting on outer corners, press up on centre of lower clips whilst gently pulling grille forward to remove. **See figure 2.**
4. Under front of vehicle, remove four push pull plastic clips from front of under body guard, one push pull plastic clips (per side) from underbelly guard to inner guard and three T20 torx head screws (per side) from front of inner guard to bumper.
5. Under wheel arch, remove three T20 torx head screws (per side) from inner guard to bumper cover. Pull inner guards rearward away from bumper.
6. Disconnect fog lights from connector on radiator support. Caution: If disconnecting wiring from lights, wiring remains connected to rear of light housing. **See figure 3 and 4.**
7. Where rear of guard and bumper cover meet, remove one 10mm head bolt (per side). Gently pull bumper cover sideways to release plastic holding clips and forward to release clips from under headlights. Once both sides are released, remove four push pull plastic clips from centre of bumper cover. Remove bumper cover.
8. Remove polypropylene infill from front of alloy bumper support.
9. Remove four 13mm head nuts (per side) from front of bumper support to chassis rails. Remove support.
10. Using tin snips, a sharp knife or similar, trim lower half from radiator air dams. **See figures 5 and 6.**
11. Clamp ECB steel mounts to rear of bumper support. Align holes in ECB mount centrally to holes in alloy bumper support. **See figure 7.** Check measure out to out on mounts of alloy protection bar to in to in measurement on ECB steel mounts. Using ECB steel mounts as a guide, drill inner holes in bumper support to 10mm. **Blow filings clear and treat all exposed metal with a rust inhibitor.** Install 3/8 x 1 1/4 bolts and washer on wire, flat washers, spring washers and nuts into drilled holes on bumper support. Do not tighten bolts in bottom at this stage.
12. Refit bumper support back to vehicle using original equipment nuts. **See figure 8. Tighten all bolts.**
13. Remove one 13mm head bolt from lower inner corner of crash can to radiator support. **See figure 9.** Install ECB mount support to front of chassis rail with 6mm alloy washer between lower section of ECB



**WORLD'S BEST
ALLOY BULLBARS**

East Coast Bullbars (ECB Pty Ltd)

Tel: 07 3897 5700

Fax: 07 3283 1168

ecb@ecb.com.au www.ecb.com.au

29 Snook St
Clontarf QLD 4019
Australia

Po Box 122
Margate QLD 4019
Australia

mount support and chassis rail using one M8 x 35 bolts, spring washer and flat washer for top bolt and M8 x 35 bolt, flat washer, 6mm alloy spacer washer, spring washers and nut for lower hole. Do not tighten at this stage.

14. Install M10 x 35 bolt, flat washers, spring washers and nut to front hole of ECB mount support to ECB steel mount. Finger tighten only. Tighten bolts to chassis rail, then tighten bolt from ECB mount support to ECB steel mount. **Tighten all bolts.** Fit nuts to rear of top bolt. This will stop bolt from undoing from captive nut. Tighten nuts.
15. Cut bumper cover to allow mounts to protrude. **See figure 10.**
16. Disconnect indicator and parking lights on vehicle. Install ECB quick click wiring harnesses (supplied) between disconnected harness and indicator / park lights on vehicle. Run wiring out from under lights ensuring clearance from sharp edges and moving parts. Test wiring to ensure correct connection. **CAUTION:** Once bumper cover of vehicle is fully assembled, access to indicator and parking lamps is limited.
17. Connect ECB Quick Click fog light wiring harness (supplied) into original wiring harness.
18. From rear of bumper cover, remove fog lights and associated trims.
19. Refit bumper cover as per reverse of steps 2 to 7. Do not install centre under body guard at this stage.
20. Fit ECB LED indicator / park lights into protection bar as per instructions supplied with the LED indicator kit. **NOTE: Ensure park light is to outside. See figure 11.**
21. Attach ECB fog lights to protection bar. Place M6 x 20 bolts, spring washers (supplied) through light mount from inside and attach nut to top. Slide assembly into light mount in Protection bar and centralize light to hole. **TIGHTEN FIRM ONLY. See figure 12.**
22. Attach 6mm clip lock trim (supplied) to top of ECB protection bar. **NOTE:** Trim off lower edge on an angle so trim will sit flush with end of protection bar. **See figures 13, 14 and 15.**
23. Attach 63mm clip lock trim (supplied) to tow hook opening of ECB protection bar. **NOTE:** Trim off lower edge on an angle so trim will sit flush protection bar. **See figures 16.**
24. Carefully fit bulbar to ECB steel mounts using six M12 x 40 bolts, flat washers, spring washers and nuts. **NOTE:** Rear bolts are accessible from underside of bumper. Place all bolts with head from inside to allow easier tightening. **FIGNER TIGHTEN ONLY.**
25. Align bulbar to vehicle. **See figures 17 and 18. TIGHTEN ALL BOLTS.**
26. Connect and test indicator, park and fog lights.

ENSURE NUMBER PLATE IS CLEARLY VISABLE

Note: When fitting/refitting the licence plate to the vehicle, ensure there is no obstruction to licence plate vision in accordance with local authorities. If required relocate licence plate to an alternate location.



East Coast Bullbars (ECB Pty Ltd)

Tel: 07 3897 5700

Fax: 07 3283 1168

ecb@ecb.com.au www.ecb.com.au

WORLD'S BEST
ALLOY BULLBARS

29 Snook St
Clontarf QLD 4019
Australia

Po Box 122
Margate QLD 4019
Australia

Further VFPS Notes:

- a) Do not attach VFPS to the vehicle using anchorages not intended for this purpose (e.g. engine mounting bolts).
- b) Do not use this product for any vehicle make or model, other than those specified by the VFPS manufacturer.
- c) Do not remove the plaque or label from the VFPS.
- d) Do not modify the structure of the VFPS in any way.
- e) No accessory or fitment should project forward of the VFPS forward profile.
- f) **ENSURE THESE INSTRUCTIONS ARE LEFT WITH VEHICLE OWNER AND/OR OPERATOR.**

IMPORTANT INFORMATION

Periodically check bolts and nuts for correct tightness, especially if travelling on rough roads.

FITTING KIT

1 – Pair ECB steel mounts	2 – M6 x 20 bolts
1 – Pair ECB steel mount supports	2 – M6 spring washers
2 – 40 x 11 x 6 alloy half washers	2 – M6 nuts
6 – M12 x 1.75 x 40 bolts	6 – 5/16 x 1 ¼ flat washers
12 – M12 flat washers	4 – 3/8 x 1 ¼ bolts and washer on 300mm wire
6 – M12 spring washers	4 – 3/8 nuts
6 – M12 nuts	1 – ECB LED Indicator / Park light kit
2 – M10 x 1.5 x 35 bolts	1 – ECB Quick Click Harness (IC13NIPFHIINDH)
8 – M10 flat washers	1 – ECB fog light kit
6 – M10 spring washers	1 – ECB Quick Click harness (IC10D40S1004ECBH)
2 – M10 x 1.5 nuts	2 – Fog light surrounds
4 – M8 x 35 bolts	1 – 2400 mm length 6mm clip lock trim
4 – M8 spring washers	2 – 250 mm length 3mm clip lock trim
4 – M8 x1.5 nuts	



Figure 1: Grille showing placement of top head light mount.

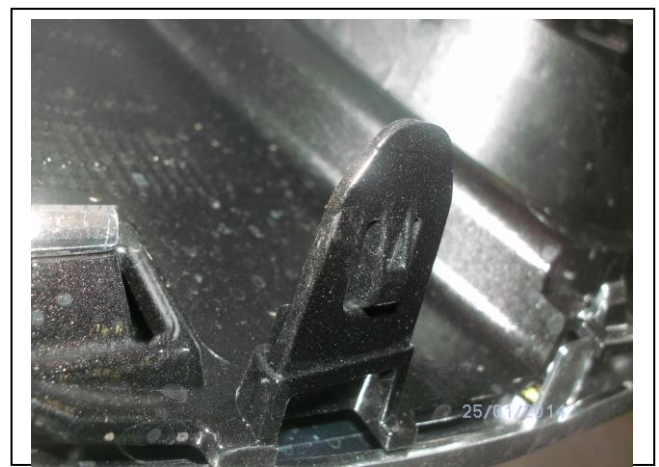


Figure 2: Close up of lower grille mount.



East Coast Bullbars (ECB Pty Ltd)

Tel: 07 3897 5700

Fax: 07 3283 1168

ecb@ecb.com.au www.ecb.com.au

WORLD'S BEST
ALLOY BULLBARS

29 Snook St
Clontarf QLD 4019
Australia

Po Box 122
Margate QLD 4019
Australia



Figure 3: Recommended fog light disconnection point, drivers side.



Figure 4: Recommended fog light disconnection point, passengers side.

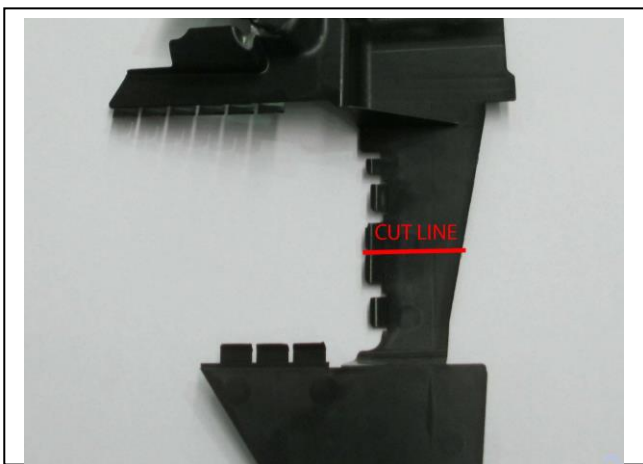


Figure 5: Cut line for drivers side air dam



Figure 6: Cut line for passengers side air dam



Figure 7: Clamp and drill inner holes in mount. Holes to drill circled.



Figure 8: bumper support and mount fitted to vehicle.



East Coast Bullbars (ECB Pty Ltd)

Tel: 07 3897 5700

Fax: 07 3283 1168

ecb@ecb.com.au www.ecb.com.au

WORLD'S BEST
ALLOY BULLBARS

29 Snook St
Clontarf QLD 4019
Australia

Po Box 122
Margate QLD 4019
Australia

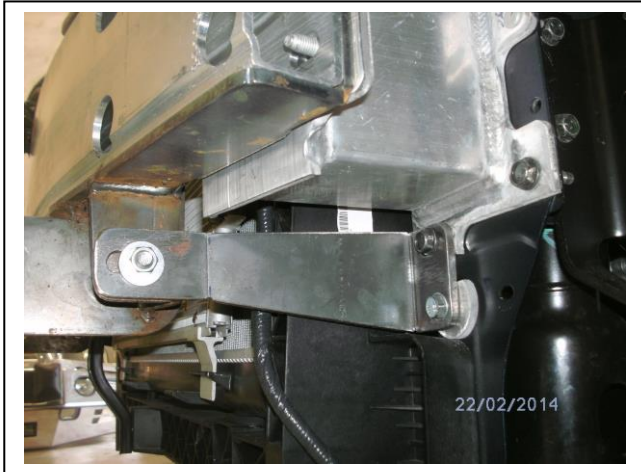
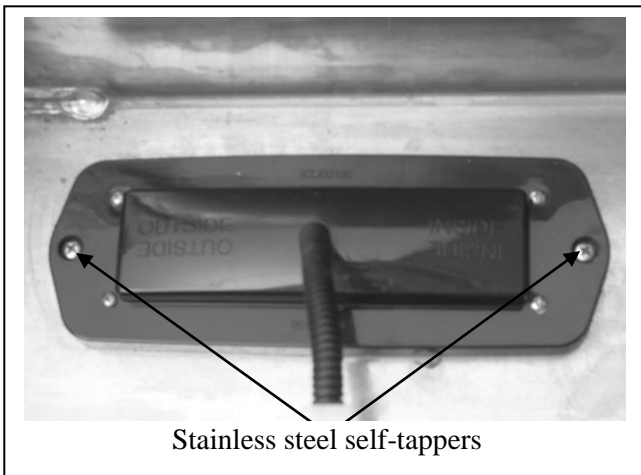


Figure 9: Lower mount support installed.

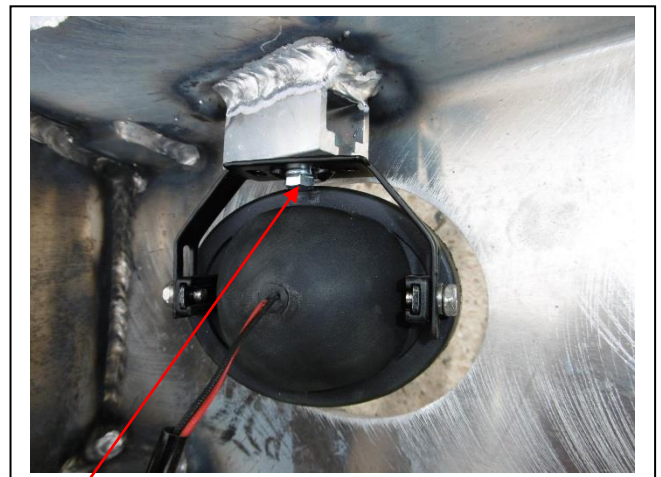


Figure 10: Bumper cut to allow mount protrusion



Stainless steel self-tappers

Figure 11



M6 bolt

Figure 12

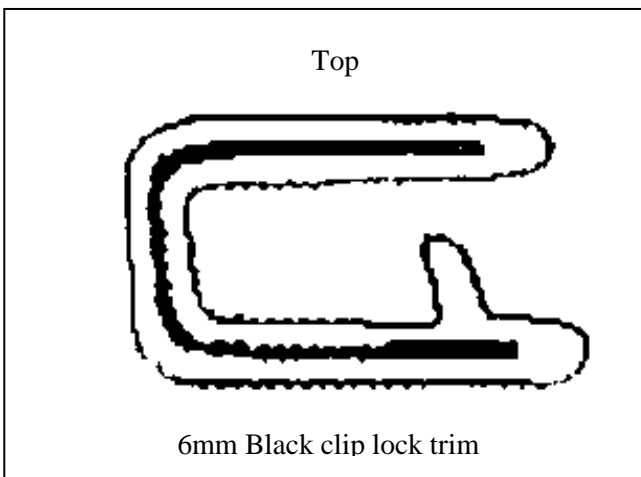


Figure 13

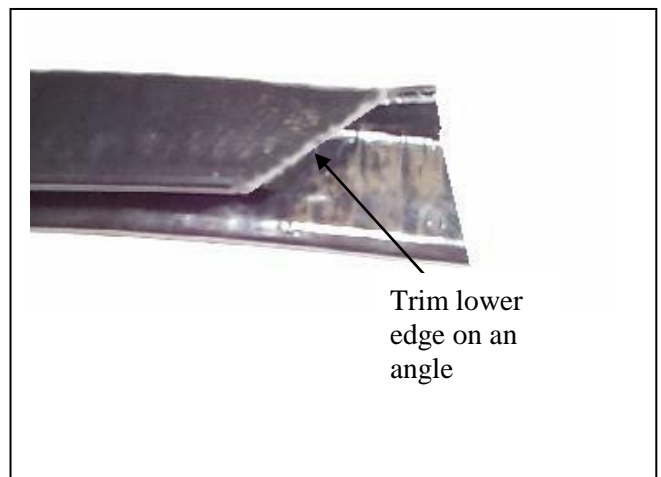


Figure 14



**WORLD'S BEST
ALLOY BULLBARS**

East Coast Bullbars (ECB Pty Ltd)

Tel: 07 3897 5700

Fax: 07 3283 1168

ecb@ecb.com.au www.ecb.com.au

29 Snook St
Clontarf QLD 4019
Australia

Po Box 122
Margate QLD 4019
Australia

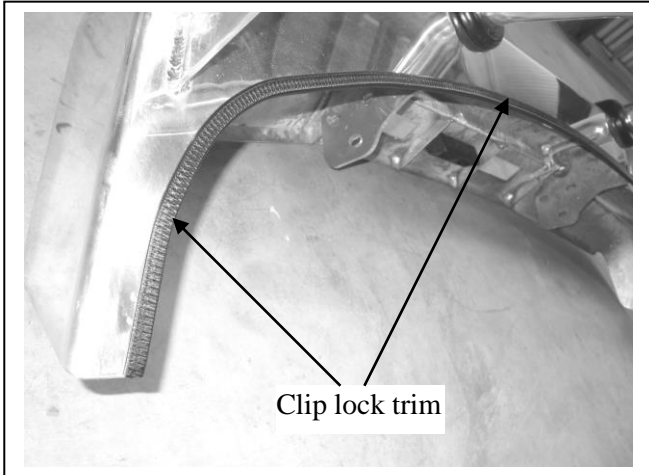


Figure 15



Figure 16: Clip lock trim in tow point opening



Figure 17



Figure 18



**WORLD'S BEST
ALLOY BULLBARS**

East Coast Bullbars (ECB Pty Ltd)

Tel: 07 3897 5700

Fax: 07 3283 1168

ecb@ecb.com.au www.ecb.com.au

29 Snook St
Clontarf QLD 4019
Australia

Po Box 122
Margate QLD 4019
Australia

We value your comments

Dear Fitter,

ECB would like to know how you went with the installation of this product. We value your comment and may need to contact you to clarify some details so please complete your contact details clearly.

We would appreciate if you could complete as many of the following details as possible.

Your Name:	Your contact No.
Product Part No.	Product Invoice No.
Product Description:	Make, model, and year of vehicle:
Product Work Order No.	Company your from/Company product purchased from:

Date of Fitment: ____/____/____

Was the fitting hardware supplied complete?

Yes

No

If no what was not supplied

Did the installation go well?

Yes

No

Please provide comments

Please draw diagrams if you need to.

Post to
Reply Paid 122
PO Box 122

Fax to
(07) 3283 1168



**WORLD'S BEST
ALLOY BULLBARS**

East Coast Bullbars (ECB Pty Ltd)

Tel: 07 3897 5700

Fax: 07 3283 1168

ecb@ecb.com.au www.ecb.com.au

29 Snook St
Clontarf QLD 4019
Australia

Po Box 122
Margate QLD 4019
Australia

Margate QLD 4019



WORLD'S BEST
ALLOY BULLBARS

East Coast Bullbars (ECB Pty Ltd)

Tel: 07 3897 5700

Fax: 07 3283 1168

ecb@ecb.com.au www.ecb.com.au

29 Snook St
Clontarf QLD 4019
Australia

Po Box 122
Margate QLD 4019
Australia

DESPATCH CHECKLIST BN160SY

ICZBKCN160



Work Order #		See other side of this page for photos of all mounts
Finish:		
Transport:		
Due Date:		

OC.....1 – Steel mounting brackets.

OC.....1 – Steel mount support

BK.....1 – Bolt Kit.

BK.....1 – LED ECB indicator / park light kit

BK.....1 – quick click fog harness (IC13NIPFHIINDH)

BK.....1 – ECB fog light kit

BK.....1 – quick click fog harness (IC10D40S1004ECBH)

BK.....2 – Fog light surrounds

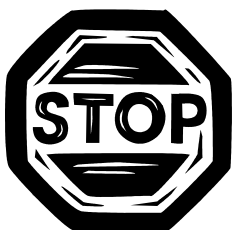
BK.....1 – 2400mm length 6mm clip lock

BK.....2 – 250mm length 3mm clip lock

OC.....2 – ECB Overrides – **Fitted to Bar**

OC.....6 – 6mm Air Vents – **Fitted to Bar. Top vents to be fitted upside down**

_____/_____
Wrapper's initials / Checker initials



Is this product “the best it can be” Yes
If **NO** fix before continuing

All parts checked and completed by:

Nut and bolts: _____ Date __/__/__

Order control: _____ Date __/__/__

Final wrap check: _____ Date __/__/__



**WORLD'S BEST
ALLOY BULLBARS**

East Coast Bullbars (ECB Pty Ltd)

Tel: 07 3897 5700

Fax: 07 3283 1168

ecb@ecb.com.au www.ecb.com.au

29 Snook St
Clontarf QLD 4019
Australia

Po Box 122
Margate QLD 4019
Australia



_____/_____
Wrapper's initials / Checker initials