



WORLD'S BEST  
ALLOY BULLBARS

East Coast Bullbars (ECB Pty Ltd)

Tel: 07 3897 5700

Fax: 07 3283 1168

ecb@ecb.com.au www.ecb.com.au

29 Snook St  
Clontarf QLD 4019  
Australia

Po Box 122  
Margate QLD 4019  
Australia

## BMA38SY

REPLACES: 22.02.10  
REVISED: 17.01.18

### FITTING INSTRUCTIONS

#### MAZDA BT50 09/08-09/11 BIG TUBE™ PROTECTION BAR WITH FOG LAMPS VEHICLE FRONTAL PROTECTION SYSTEM (VFPS) FOR AIR BAG & ADR COMPLIANT VEHICLES

Check installation hardware before commencing.

1. Remove bumper cover from vehicle. Lift bonnet. Two plastic clips (one each side of bonnet latch) two Phillips head screws and four plastic clips (one screw, two clips each side) beside headlamps, two 10mm head bolts and two 8mm bolts from rear of bumper wings under guards (one each side), light wiring from rear of lights and two plastic clips from under front of bumper cover. Carefully pull cover toward side of vehicle and unclip. Gently lift bumper forward and remove.
2. Remove bumper cover support. Access from under front of support, two 17mm head bolts (one each side) and inside engine bay on top of chassis rail. Two 17mm head bolts (one each side). **See figure 1.**
3. Locate vehicle wiring loom for indicator / park lights and fog lamps on front of radiator support under headlamps. Splice ECB indicator / park light wiring (supplied) and fog lamp wiring (supplied) into vehicle wiring loom. Use cable locks (supplied). Secure to vehicle fog lamp wiring using 150mm cable ties (supplied).
4. Remove passenger side tow hook / tie down bracket. Four 17mm head bolts. **See figure 2.**
5. Remove driver's side tie down bracket and crush bracket on front of chassis. Four 17mm head bolts.
6. Attach ECB steel angle bracket (supplied) to tie down hook encapsulated nuts, angle leg to outside of vehicle. Use two M12 x 1.5 x 35mm bolts, flat and spring washers (supplied) on underside of chassis. **FINGER TIGHTEN ONLY. See figure 3.**
7. Gently bend front tube on oil cooler vertically (if fitted) as per **figures 4 and 5**, to clear mount. **CAUTION:** Excessive force will damage cooler.
8. Attach steel mounting bracket (supplied) to chassis where bumper cover support brackets were removed. Place lower leg to inside of angle brackets attached to chassis. Use original bolts for top fitment and two 3/8 x 1 1/2 bolts, flat and spring washers and nuts (supplied) (each side) for lower leg. Align with vehicle, checking bracket is centred. **TIGHTEN IN POSITION ON TOP FRONT BOLTS ONLY. NOTE: Steel mounting bracket must not touch turbo cooler, oil cooler or air conditioning receiver dryer. See figures 6 and 7. If steel mounting brackets are scratched when fitted then treat with a rust inhibitor or similar.**
9. **TIGHTEN BOLTS**, front of chassis rail first, followed by top of chassis rail, tow points on chassis rail and finally mounting bracket lower leg to steel angle brackets.
10. Remove original fog lamps from vehicle.
11. Refit bumper cover in the reverse order to step 1.
12. Fit ECB LED indicator / park lights (supplied) into protection bar as per instructions supplied with the LED indicator kit. **NOTE: Ensure park light is to outside. See figure 8.**



**WORLD'S BEST  
ALLOY BULLBARS**

**East Coast Bullbars (ECB Pty Ltd)**

Tel: 07 3897 5700

Fax: 07 3283 1168

ecb@ecb.com.au www.ecb.com.au

29 Snook St  
Clontarf QLD 4019  
Australia

Po Box 122  
Margate QLD 4019  
Australia

13. Attach ECB fog lights to protection bar. Place M6 x 20 bolts, spring washers (supplied) through light mount from inside and attach nut to top. Slide assembly into light mount in Protection bar and centralize light to hole. **See figure 9. TIGHTEN ALL BOLTS FIRM ONLY. Do not fit fog light trims at this stage.**
14. Fit 6mm clip lock trim (supplied) to rear of protection bar **NOTE:** Trim off lower edge on 6mm trim on an angle so trim will sit flush with end of protection bar. **See figures 10, 11 and 12.**
15. Attach protection bar to inside of steel mounting brackets. Use six ½ x 1 ½ bolts, flat and spring washers and nuts (supplied) **DO NOT TIGHTEN.**
16. Align protection bar with vehicle. **See figures 13 and 14. TIGHTEN ALL BOLTS.**
17. Connect indicator / park light wiring. **CHECK OPERATION.**
18. Connect fog lights. **CHECK OPERATION.** Aim with low beam, **TIGHTEN IN POSITION.** Fit ECB fog light trims (supplied) to protection bar, wider part of trim to inside.

**NOTE:** For turbo diesel models upper three air vents are to be fitted with ECB logo at bottom direct air onto turbo cooler.

**ENSURE NUMBER PLATE IS CLEARLY VISABLE**

**Note:** When fitting/refitting the licence plate to the vehicle, ensure there is no obstruction to licence plate vision in accordance with local authorities. If required relocate licence plate to an alternate location.

**Further VFPS Notes:**

- a) Do not attach VFPS to the vehicle using anchorages not intended for this purpose (e.g. engine mounting bolts).
- b) Do not use this product for any vehicle make or model, other than those specified by the VFPS manufacturer.
- c) Do not remove the plaque or label from the VFPS.
- d) Do not modify the structure of the VFPS in any way.
- e) No accessory or fitment should project forward of the VFPS forward profile.
- f) **ENSURE THESE INSTRUCTIONS ARE LEFT WITH VEHICLE OWNER AND/OR OPERATOR.**

**IMPORTANT INFORMATION**

Periodically check bolts and nuts for correct tightness, especially if travelling on rough roads

**FITTING KIT**

1 – Steel mounting brackets.	2 – ECB fog lights.
2 – Steel angle mounting brackets.	2 – fog light surrounds
4 – 3/8 x 1 ½ bolts and nuts.	2 – M6 x 20 bolts.
8 – 3/8 flat washers.	2 – M6 flat washers.
4 – 3/8 spring washers.	2 – M6 spring washers.
4 – M12 x 1.5 x 35mm bolts.	2 – M6 nuts
6 – ½ x 1 /2 bolts and nuts.	10 – Cable locks
16 – ½ flat washers.	1 – 2300mm length of 6mm clip lock trim
10 – ½ spring washers.	2 – 150mm zip ties.
1 – ECB LED Indicator / Park light kit	



East Coast Bullbars (ECB Pty Ltd)

Tel: 07 3897 5700

Fax: 07 3283 1168

ecb@ecb.com.au www.ecb.com.au

29 Snook St  
Clontarf QLD 4019  
Australia

Po Box 122  
Margate QLD 4019  
Australia

WORLD'S BEST  
ALLOY BULLBARS

17mm bolt Bumper Cover Support 17mm head bolt

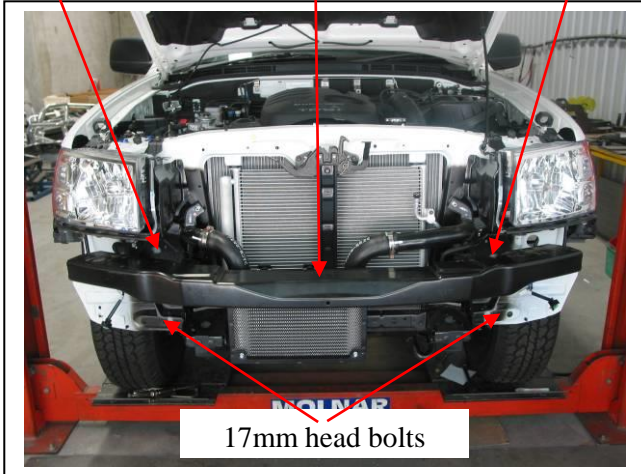


Figure 1

17mm head bolts

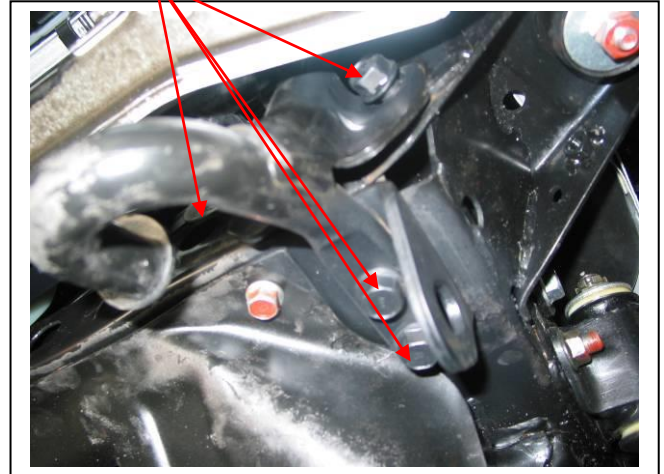


Figure 2 – Passenger side shown

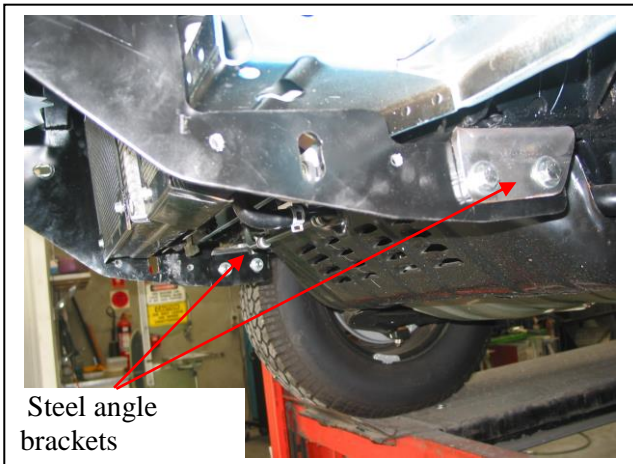


Figure 3

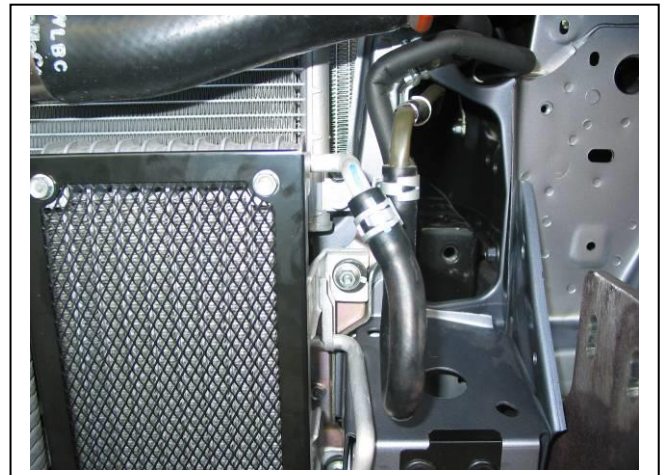


Figure 4

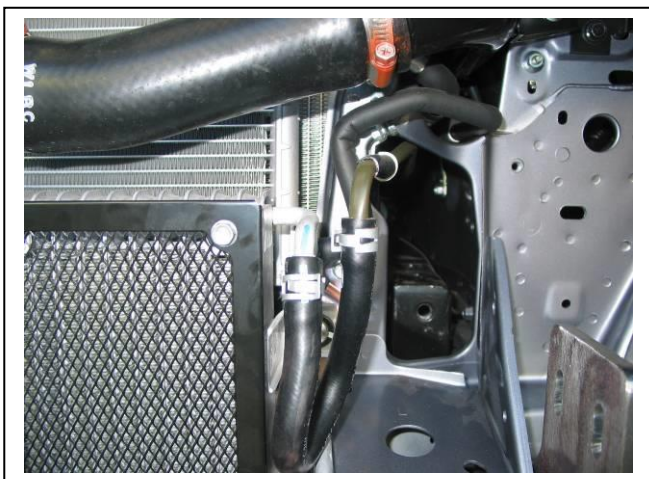


Figure 5



Figure 6 – Drivers side shown



**WORLD'S BEST  
ALLOY BULLBARS**

**East Coast Bullbars (ECB Pty Ltd)**

Tel: 07 3897 5700

Fax: 07 3283 1168

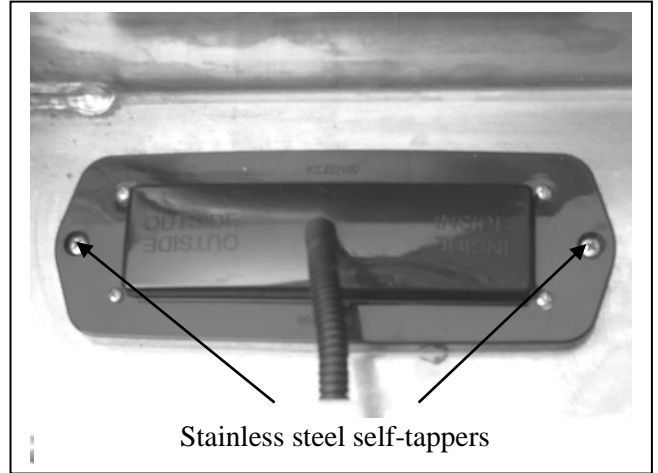
ecb@ecb.com.au www.ecb.com.au

29 Snook St  
Clontarf QLD 4019  
Australia

Po Box 122  
Margate QLD 4019  
Australia

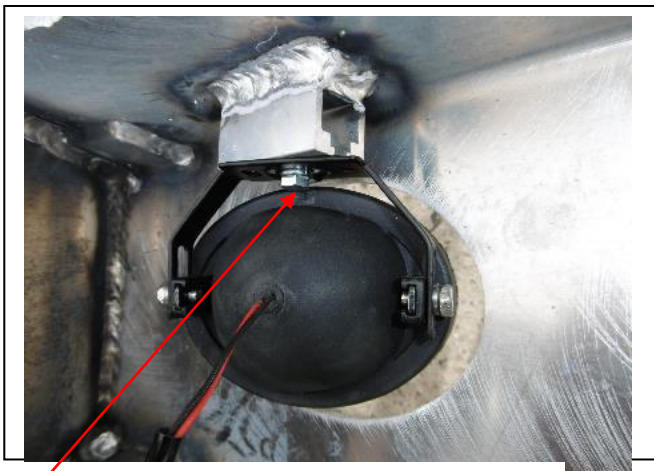


**Figure 7 – Passenger side shown**



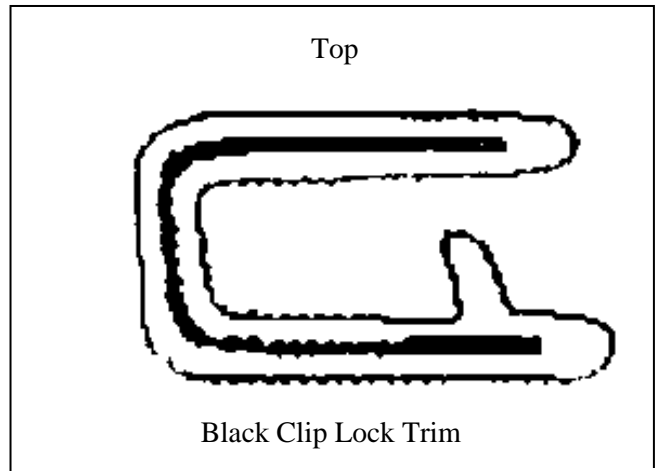
Stainless steel self-tappers

**Figure 8**



M6 bolt

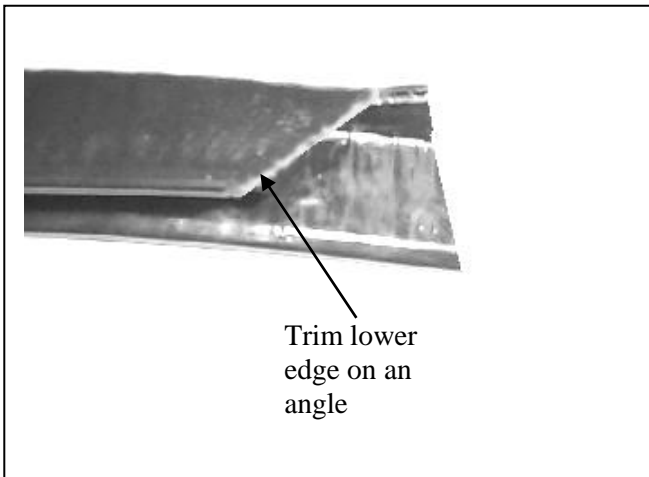
**Figure 9**



Top

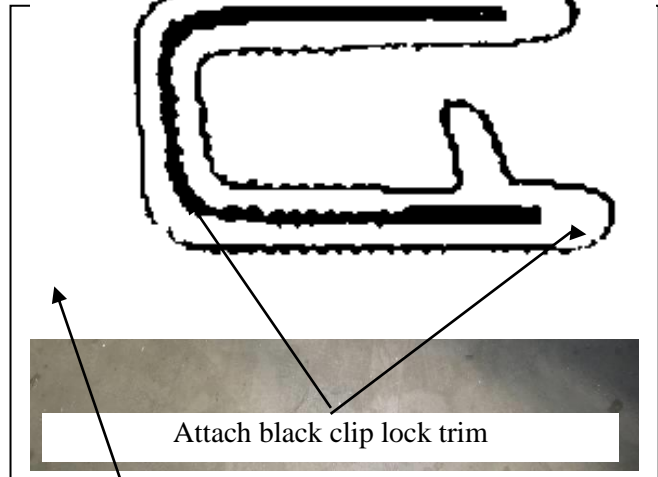
Black Clip Lock Trim

**Figure 10**



Trim lower  
edge on an  
angle

**Figure 11**



Attach black clip lock trim

Trim level with the  
back of protection bar

**Figure 12**



**WORLD'S BEST  
ALLOY BULLBARS**

**East Coast Bullbars (ECB Pty Ltd)**

Tel: 07 3897 5700

Fax: 07 3283 1168

ecb@ecb.com.au www.ecb.com.au

29 Snook St  
Clontarf QLD 4019  
Australia

Po Box 122  
Margate QLD 4019  
Australia



**Figure 13 – Front view shown**



**Figure 14 – Side view shown**





WORLD'S BEST  
ALLOY BULLBARS

East Coast Bullbars (ECB Pty Ltd)

Tel: 07 3897 5700

Fax: 07 3283 1168

ecb@ecb.com.au www.ecb.com.au

29 Snook St  
Clontarf QLD 4019  
Australia

Po Box 122  
Margate QLD 4019  
Australia

# DESPATCH CHECKLIST BMA38SY

ICZBKCMA38



Work Order #	
Finish:	
Transport:	
Due Date:	

- 1 – Steel mounting brackets.
- 2 – Steel angle mounting brackets.
- 1 – Bolt kit.
- 1 – ECB LED Indicator / Park light kit.
- 2 – ECB fog lights.
- 2 – Fog light surrounds.
- 1 – 2300mm length 6mm clip lock trim.
- 2 – ECB overrides – **Fitted to Bar**
- 6 – 6mm air scoops – **Fitted to Bar**

**See other side of  
this page for  
photos of all  
mounts**



Is this product “the best it can be” Yes \_\_\_\_\_ / \_\_\_\_\_  
Wrapper’s initials / Checker initials

If **NO** fix before continuing

All parts checked and completed by:

Nut and bolts: \_\_\_\_\_ Date \_\_\_/\_\_\_/\_\_\_

Order control: \_\_\_\_\_ Date \_\_\_/\_\_\_/\_\_\_

Final wrap check: \_\_\_\_\_ Date \_\_\_/\_\_\_/\_\_\_



**WORLD'S BEST  
ALLOY BULLBARS**

**East Coast Bullbars (ECB Pty Ltd)**

Tel: 07 3897 5700

Fax: 07 3283 1168

ecb@ecb.com.au www.ecb.com.au

29 Snook St  
Clontarf QLD 4019  
Australia

Po Box 122  
Margate QLD 4019  
Australia

