



WORLD'S BEST
ALLOY BULLBARS

East Coast Bullbars (ECB Pty Ltd)

Tel: 07 3897 5700

Fax: 07 3283 1168

ecb@ecb.com.au www.ecb.com.au

29 Snook St
Clontarf QLD 4019
Australia

Po Box 122
Margate QLD 4019
Australia

BM95SY

REPLACES: 23.07.10
REVISED: 03.08.11

FITTING INSTRUCTIONS

MITSUBISHI FE CANTER (02/05-) WIDE CAB TILT CAB 4x4 BIG TUBE™ PROTECTION BAR 15,000lb Premier Winch Compatible VEHICLE FRONTAL PROTECTION SYSTEM (VFPS) FOR AIR BAG & ADR COMPLIANT VEHICLES

Check installation hardware before commencing.

1. Remove bumper from vehicle, two 14mm head bolts (per side).
2. Remove bumper brackets and tow hooks from chassis rail. Two 22mm head bolts (per side) and one 14mm bolt (per side), tap forward to break off weld. Then grind off remaining weld from chassis. **See figures 1 and 2.** Grind off welded nut from lower inside front of chassis rail on drivers side.
3. Drill out 11mm hole in top front of chassis rail on driver's side and underside front of chassis on both sides to 13mm hole. **Treat all exposed metal with a rust inhibitor. See figure 3.**
4. Measure distance between chassis rails. It has been noted chassis in this vehicle may differ between 840mm and 850mm. This will influence the placement of chassis spacers latter in the fitment.
5. Remove electrical box (three 10mm head bolts) and horn (two 12mm head bolts) from cross member. Remove cross member (three 14mm head bolts) from vehicle.
6. Fit winch control box to control box mount using M6 x 40 bolt and M6 nut from winch kit and four M6 nuts and washers from protection bar kit. Some disassembly of control box may be required to install bolt from inside of control box. Tighten into control box using two M6 nuts on underside (per bolt). **See figure 4 and 5.** Affix to control box mount to control box mount using M6 nut, flat washers, spring washers and nuts, controller side to mounting side of control box mount.
7. Affix control box mount to drivers side of winch frame using M8 x 30, flat washers, spring washers and nuts (supplied). Place bolts to underside of mount for maximum ground clearance. **Tighten all bolts.**
8. Fit fairlead rollers to front of winch mount using bolts from winch kit and four M12 washers (supplied). **Finger tighten only.**
9. Place winch mount onto high lift jack. Place winch onto mount. Lift and bolt winch mount onto chassis where cross member was previously removed using two M10 x 1.25 x 40 bolts, flat washers and spring washers (supplied) (per side) to rear holes and one ½ x 1 ½ bolt, flat washers, spring washers and nut (supplied)(per side) to front holes. **Finger tighten only.**
10. Note distance between chassis rails previously taken. Should distance be closer to 840mm insert full 4mm steel spacer plate between chassis rail and ECB steel mounting brackets. Should distance be closer to 850mm insert only front winch frame section of 4mm steel spacer plate (break using pliers bending back and forward) between chassis rail and ECB steel mounting brackets. Fit ECB steel mounting brackets (supplied) to chassis rails. Use three 9/16 x 1 ½ bolts (supplied) and three ½ x 1 ½ bolt (supplied) for driver's side and two 9/16 x 1 ½ bolts (supplied) and four ½ x 1 ½ bolts (supplied) for passenger side. With all bolts in and using a level on the front of the steel mounting bracket, lift front of steel mounting bracket on driver's side to level and **TIGHTEN FIRMLY TO CHASSIS.** Position passenger side the same as driver's side. **TIGHTEN ALL BOLTS** drivers



**WORLD'S BEST
ALLOY BULLBARS**

East Coast Bullbars (ECB Pty Ltd)

Tel: 07 3897 5700

Fax: 07 3283 1168

ecb@ecb.com.au www.ecb.com.au

29 Snook St
Clontarf QLD 4019
Australia

Po Box 122
Margate QLD 4019
Australia

and passengers side on chassis only. Tighten front $\frac{1}{2}$ x $1\frac{1}{2}$ bolts from chassis mounts to winch mount, then underside of chassis rail for winch frame. This will centralise winch mount on vehicle.

11. Refit electrical wiring box using original nuts and horn with earth using $\frac{3}{8}$ x 1 bolt, flat washers, spring washer and nut (supplied) to rear of winch mount. **See figure 6.** Fit winch to winch mount using bolts from winch kit. **Tighten all bolts.** Wire winch as per winch instructions.
12. Locate original indicator wiring. For easy access to wiring remove original indicator. Open doors, remove two Phillips head screws, **see figure 7**, and close doors. Slide indicator out using a little force, as it may seem a tight fit, **see figure 8.** Splice ECB wiring and 200mm piece single core wire for indicator into original wiring. Use cable locks (supplied). Refit original indicator. Park light wiring is easiest to access from underneath. Remove original park light bulb holder and splice ECB wiring into original. Use cable locks (supplied). Refit bulb.
13. Fit ECB LED indicator / park lights (supplied) into protection bar as per instructions supplied with the LED indicator kit. **NOTE: Ensure park light is to outside. See figure 9.**
14. Fit 6mm clip lock trim (supplied) around winch cut out in protection bar. Place join to bottom of opening. **See figure 10 and 11.**
15. Lift protection bar onto steel mounting brackets. Loosely place eye bolts (supplied) through protection bar. Insert $\frac{1}{2}$ x $2\frac{1}{2}$ bolts, nylock nuts and flat washers (supplied) for hinge holes. **TIGHTEN $\frac{1}{2}$ x $2\frac{1}{2}$ bolts FIRM ONLY.** Do not bend plates into steel mounting brackets.
16. Connect ECB indicator / park light wiring.
17. Remove eyebolts and tilt protection bar, check indicator / park light wiring for tilt. Tilt cab and check all clearances.
18. Lock cab back into position. Lift protection bar and **TIGHTEN** eyebolts firmly. Check protection bar alignment with cab. Readjust steel mounting brackets on chassis if necessary. **See figure 12 and 13.**
19. Check indicator / park lights for correct operation.
20. Attach tilt-warning sticker (supplied) near cab tilt lever.

ENSURE NUMBER PLATE IS CLEARLY VISABLE

Note: When fitting/refitting the licence plate to the vehicle, ensure there is no obstruction to licence plate vision in accordance with local authorities. If required relocate licence plate to an alternate location.

Further VFPS Notes:

- a) Do not attach VFPS to the vehicle using anchorages not intended for this purpose (e.g. engine mounting bolts).
- b) Do not use this product for any vehicle make or model, other than those specified by the VFPS manufacturer.
- c) Do not remove the plaque or label from the VFPS.
- d) Do not modify the structure of the VFPS in any way.
- e) No accessory or fitment should project forward of the VFPS forward profile.
- f) **ENSURE THESE INSTRUCTIONS ARE LEFT WITH VEHICLE OWNER AND/OR OPERATOR.**

IMPORTANT INFORMATION

Periodically check bolts and nuts for correct tightness, especially if travelling on rough roads



**WORLD'S BEST
ALLOY BULLBARS**

East Coast Bullbars (ECB Pty Ltd)

Tel: 07 3897 5700

Fax: 07 3283 1168

ecb@ecb.com.au www.ecb.com.au

29 Snook St
Clontarf QLD 4019
Australia

Po Box 122
Margate QLD 4019
Australia

FITTING KIT

1 – Pair Steel mounting brackets.	4 – M10 flat washers
1 – Steel winch mount bracket	4 – M10 spring washers
1 – Steel winch control box mount	3 – M8 x 30 bolts
1 – Passenger side 4mm steel spacer plate	6 – M8 flat washers
1 - Drivers side 4mm steel spacer plate	3 – M8 spring washers
5 – 9/16 x 1 ½ bolts.	3 – M8 nuts
5 – 9/16 nuts.	4 – M6 nuts
10 – 9/16 flat washers.	2 – M6 flat washers
5 – 9/16 spring washers.	2 – ¾ eyebolts.
9 – ½ x 1 ½ bolts.	2 – ¾ Nylon washers.
2 – ½ x 2 ½ bolts.	1 – ECB LED Indicator / Park light kit
24 – ½ flat washers.	1 – 400mm length 1 core wire.
9 – ½ spring washers.	2 – male bullet connectors
2 – ½ nyloc nuts.	2 – female bullet connectors
9 – ½ nuts.	6 – Cable locks.
4 – M12 flat washers	1 – 1100mm lengths 6mm clip lock trim
4 – M10 x 1.25 x 40 bolts	1 – Tilt-warning sticker.



Figure 1



Figure 2 – Grind off remaining weld. Drivers side shown

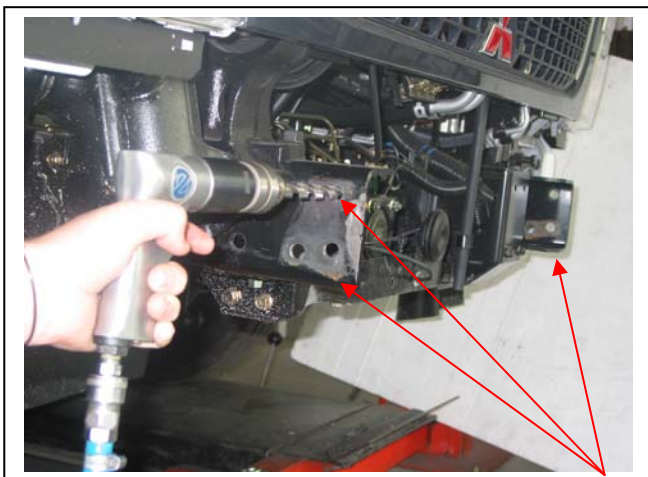


Figure 3 – Drivers side shown Drill 13mm hole top front, one each side to underside of chassis



Figure 4



**WORLD'S BEST
ALLOY BULLBARS**

East Coast Bullbars (ECB Pty Ltd)

Tel: 07 3897 5700

Fax: 07 3283 1168

ecb@ecb.com.au www.ecb.com.au

29 Snook St
Clontarf QLD 4019
Australia

Po Box 122
Margate QLD 4019
Australia

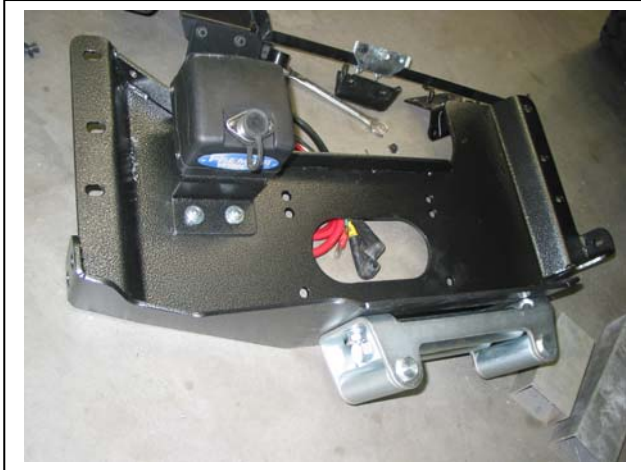


Figure 5 – Assembled winch frame



Figure 6

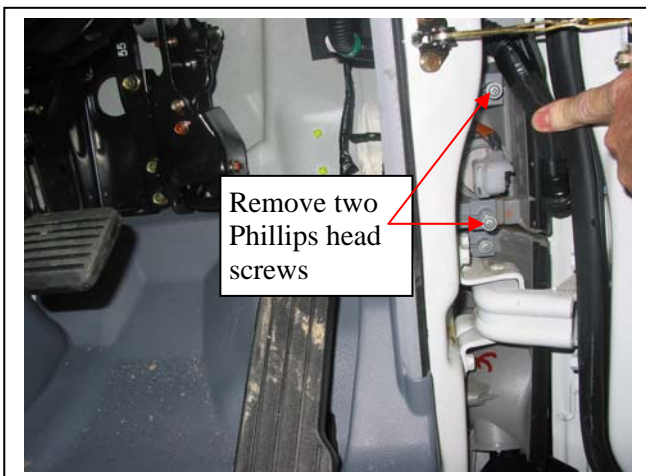


Figure 7 – Driver's side shown



Figure 8 – Push outwards

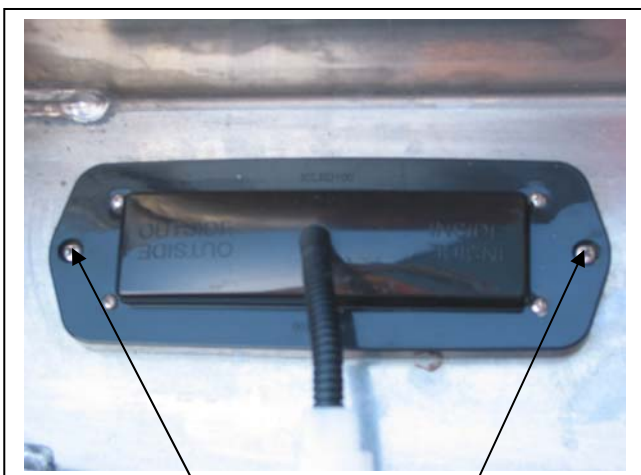


Figure 9
Stainless steel self-tappers

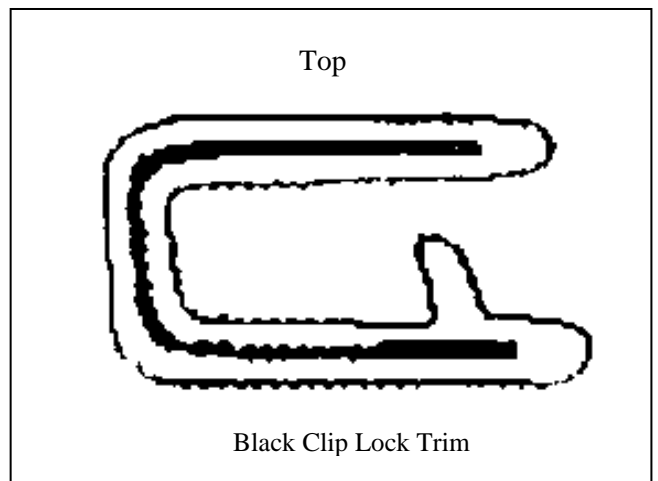


Figure 10



**WORLD'S BEST
ALLOY BULLBARS**

East Coast Bullbars (ECB Pty Ltd)

Tel: 07 3897 5700

Fax: 07 3283 1168

ecb@ecb.com.au www.ecb.com.au

29 Snook St
Clontarf QLD 4019
Australia

Po Box 122
Margate QLD 4019
Australia



Figure 11



Figure 12 – Front view shown



Figure 13 – Side view shown



**WORLD'S BEST
ALLOY BULLBARS**

East Coast Bullbars (ECB Pty Ltd)

Tel: 07 3897 5700

Fax: 07 3283 1168

ecb@ecb.com.au www.ecb.com.au

29 Snook St
Clontarf QLD 4019
Australia

Po Box 122
Margate QLD 4019
Australia

We value your comments

Dear Fitter,

ECB would like to know how you went with the installation of this product. We value your comment and may need to contact you to clarify some details so please complete your contact details clearly.

We would appreciate if you could complete as many of the following details as possible.

Your Name:	Your contact No.
Product Part No.	Product Invoice No.
Product Description:	Make, model, and year of vehicle:
Product Work Order No.	Company your from/Company product purchased from:

Date of Fitment: ____/____/____

Was the fitting hardware supplied complete?

Yes

No

If no what was not supplied

Did the installation go well?

Yes

No

Please provide comments

Please draw diagrams if you need to.

Post to
Reply Paid 122
PO Box 122
Margate QLD 4019

Fax to
(07) 3283 1168



WORLD'S BEST
ALLOY BULLBARS

East Coast Bullbars (ECB Pty Ltd)

Tel: 07 3897 5700

Fax: 07 3283 1168

ecb@ecb.com.au www.ecb.com.au

29 Snook St
Clontarf QLD 4019
Australia

Po Box 122
Margate QLD 4019
Australia

DESPATCH CHECKLIST BM95SY

Work Order #	
Finish:	
Transport:	
Due Date:	

- 1 – Pair Steel mounting brackets.
- 1 – Steel winch mount bracket
- 1 – steel winch control bracket
- 1 – Pass side 4mm Steel spacer plate
- 1 – Drivers side 4mm Steel spacer plate
- 1 – Bolt kit.
- 2 – ¾ Eye Bolts.
- 1 – ECB LED Indicator / Park light kit.
- 1 – 400mm length 1 core wire.
- 1 – 1100mm lengths 6mm clip lock trim.
- 2 – ECB overrides – **Fitted to Bar**



Is this product “the best it can be” Yes _____ / _____
Wrapper's initials / Checker initials

If **NO** fix before continuing

All parts checked and completed by:

Nut and bolts: _____ Date __/__/__

Order control: _____ Date __/__/__

Final wrap check: _____ Date __/__/__



**WORLD'S BEST
ALLOY BULLBARS**

East Coast Bullbars (ECB Pty Ltd)

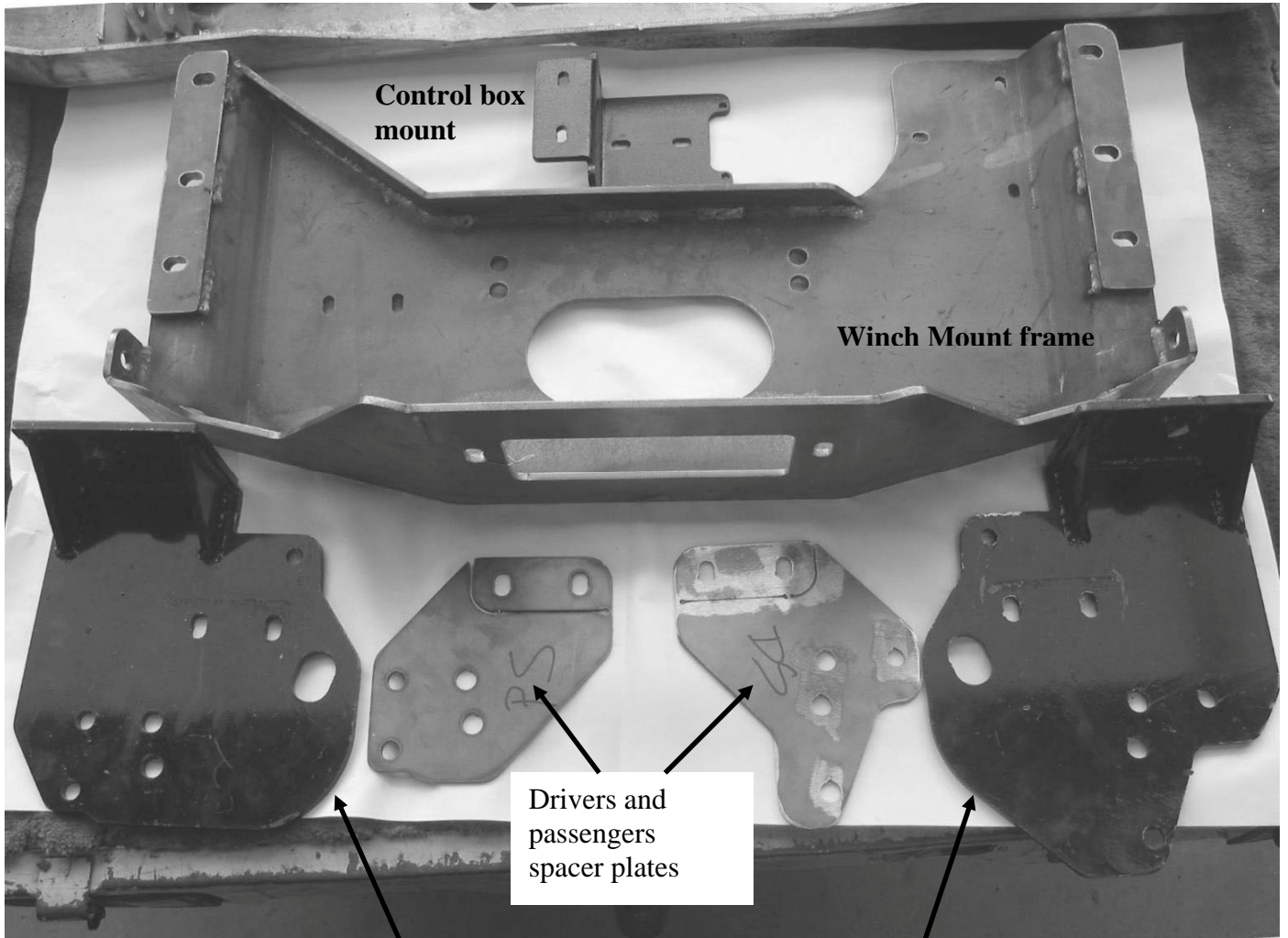
Tel: 07 3897 5700

Fax: 07 3283 1168

ecb@ecb.com.au www.ecb.com.au

29 Snook St
Clontarf QLD 4019
Australia

Po Box 122
Margate QLD 4019
Australia



**Control box
mount**

Winch Mount frame

**Drivers and
passengers
spacer plates**

**Passengers and drivers chassis mounts
(1 pair steel mounting brackets)**