



**WORLD'S BEST
ALLOY BULLBARS**

East Coast Bullbars (ECB Pty Ltd)

Tel: 07 3897 5700

Fax: 07 3283 1168

ecb@ecb.com.au www.ecb.com.au

29 Snook St
Clontarf QLD 4019
Australia

Po Box 122
Margate QLD 4019
Australia

BJ83SY

REPLACES: 29.08.13

REVISED: 07.12.15

FITTING INSTRUCTIONS

JEEP GRAND CHEROKEE OVERLAND WK MY14 6/13on WINCH COMPATIBLE BIG TUBE PROTECTION BAR WITH FOG LIGHTS VEHICLE FRONTAL PROTECTION SYSTEM (VFPS) FOR AIR BAG & ADR COMPLIANT VEHICLES

Check installation hardware before commencing.

1. Lift bonnet.
2. Remove seven hand twist clips from under vehicle (three across centre rear, one (per side) from front of inner guard and one (per side) from side of bumper join accessible from area under front edge of inner guard. Remove black lower section of bumper bar by firmly pulling forward to release clips into coloured section of bumper. **See figure 1.**
3. Remove large nut from rear of tow hook on driver's side. Gently tap tow hook threaded plug forward from rear. Slide tow hook out of cradle. Undo two 16mm head bolts from cradle (bracket) to remove. **See figure 2.**
4. Using a set of side cutters cut rear from two plastic rivets (per side) in front of wheel arches and remove one 10mm head bolt from join between coloured bumper and guard. Gently pull flare away from side of vehicle, unclipping push in clips from behind as you go. **See figure 3.**
5. Pull coloured section of bumper away from side of vehicle to release clips to side of guard, then forward to release clips under headlights. Repeat for other side. On top of bumper, remove two push pull plastic clips and lift up to unclip. Disconnect fog lights, parking sensors from drivers side (if fitted).
6. Carefully remove parking sensors, parking sensor wiring harness (if fitted) and fog lights (unclip from three keepers) from coloured section of bumper.
7. Splice indicator/ park wiring into original wiring harness behind headlights. To access rear of headlight on passenger's side, open air box, remove filter and pull up on base to remove from rubber mounts.
8. To refit air box on passenger's side, remove rubber mounts and refit to air box. Push air box back onto body mounts, replace filter and refit lid.
9. Connect ECB Quick Click fog light wiring harness (supplied) into original wiring harness.
10. Remove polystyrene bumper support.
11. Drill 6mm hole through top bumper stiffener and lower grille locator. **NOTE: All drilled holes and any exposed metal must be treated with a rust inhibitor.** Remove two 10mm head bolts from grille locator. Using a jigsaw or similar tool, cut off lower section of bumper locator. **See figure 4.** Refit to vehicle using one M6 x 30 bolt, flat washers and nyloc nut.
12. If vehicle has air suspension (on drivers side of vehicle), remove two 10mm head nuts from front of air pump assembly to bumper support.



**WORLD'S BEST
ALLOY BULLBARS**

East Coast Bullbars (ECB Pty Ltd)

Tel: 07 3897 5700

Fax: 07 3283 1168

ecb@ecb.com.au www.ecb.com.au

29 Snook St
Clontarf QLD 4019
Australia

Po Box 122
Margate QLD 4019
Australia

13. Remove one 13mm head bolt from each side of bonnet lock. **See figure 5.** From front of chassis rails, remove two 13mm head bolts (per side) and one 10mm head bolt (per side) from bumper support to chassis rail. From rear of bumper support, remove one Christmas tree plug (per side). Remove bumper support from vehicle.
14. Fit ECB winch cradle onto front of chassis rail using four M8 x 30 bolts, spring washers and large, 4mm thick M8 washers in front holes of chassis rails and four M10 x 40 bolts, spring washers and flat washers, in holes in underside of chassis rails. Tighten all bolts.
15. Remove radiator support brackets from rear of bumper support, two 8mm head bolts. Refit support brackets onto rear of ECB winch cradle using M8 x 25 bolts, flat washers, spring washers and nuts. Use original equipment bolts to secure back to radiator support. **See figure 6.**
16. If vehicle has air suspension (on drivers side of vehicle), remove two 13mm head bolts from radiator support upright. Install air compressor mount using original equipment bolt to both radiator support and air compressor. Align mount top limit stress on air compressor and tighten all bolts. **See figure 7.**
17. Fit fairlead roller to front of ECB winch frame using bolts supplied with winch. **Finger tighten only.**
18. Install winch into ECB winch frame using bolts supplied with winch.
19. Install control box mount (supplied) to rear of control box using bolts and nuts supplied with winch for warn winch and two M6 x 30 bolts, flat washers and nyloc nuts for mean mother winch. **See figures 8 and 9.** Fit winch control box to front of winch frame using two M8 x 30 bolts, flat washers, spring washers and nuts. **See figures 10 and 11.** Wire winch as per manufacturers instructions.
20. Using 50mm wide paper masking tape, run 1 line of masking tape under line on bumper. **See figure 12.** Using bumper detachment area as a guide, run paper tape along bumper join to meet paper tape on bumper line. **See figure 13.** Cut bumper along marked lines using a jigsaw or similar. **NOTE:** a small area above the mounts may need to be cut out to allow for mount adjustment.
21. Remove fog lights from plastic bumper using a small flat screwdriver. **See figure 14.**
22. Refit coloured section of bumper to vehicle as per reverse of step 5. As plastic rivets cannot be refitted to vehicle, drill rivet holes in coloured plastic section to 8mm and fit four plastic screw clips (supplied). Feed ECB wiring harnesses (supplied) through where fog lights are removed in original bumper.
23. Fit ECB LED indicator / park lights into protection bar as per instructions supplied with the LED indicator kit. **NOTE: Ensure park light is to outside. See figure 15.**
24. Attach ECB fog lights to protection bar. Place M6 x 20 bolts, spring washers (supplied) through light mount from inside and attach nut to top. Slide assembly into light mount in Protection bar and centralize light to hole. **TIGHTEN FIRM ONLY. See figure 16.**
25. Attach 6mm clip lock trim (supplied) to top of ECB protection bar. **NOTE:** Trim off lower edge on an angle so trim will sit flush with end of protection bar. **See figures 17, 18 and 19.** Attach 6mm clip lock trim to outer holes in skirt. Trim ends of clip lock trim square and place join on vertical edge.
26. Loosely zip tie parking sensor wiring harness into rear of ECB protection bar. **See figure 20.** Should vehicle not have parking sensors, fit six plastic plugs (supplied) to sensor holes in Protection Bar.
27. Ensure parking sensors have silicon ring around edge of sensor area of part. Install and adjust parking sensors into rear of Protection bar. Parking sensor fits through parking sensor mount, mount is then fitted to lower leg of protection bar using M6 x 20 bolts, flat washers and nyloc nuts. By twisting mount, pressure can be applied to



**WORLD'S BEST
ALLOY BULLBARS**

East Coast Bullbars (ECB Pty Ltd)

Tel: 07 3897 5700

Fax: 07 3283 1168

ecb@ecb.com.au www.ecb.com.au

29 Snook St
Clontarf QLD 4019
Australia

Po Box 122
Margate QLD 4019
Australia

rear of parking sensor in hole. Install zip tie around mount and parking sensor to ensure firm fitment. Should vehicle not have parking sensors, insert black plastic blanking plugs into hole using a plastic hammer or similar to not damage plugs. **See figure 21. Do not over tighten.**

28. Tighten parking sensor wiring harness into rear of protection bar. Ensure wiring to parking sensors does not affect fitment of parking sensors.
29. Fit ECB protection bar to ECB winch cradle using M12 x 40 bolts, flat washer, spring washers and nuts (supplied). If winch is fitted, use bolts on wire on drivers side of mounting. **Finger tighten only.**
30. Align ECB protection bar to front of vehicle. **See figure 22 and 23** for front and rear views. **Tighten all bolts.**
31. Connect indicator park lights and fog lights and check for correct operation.
32. Connect parking sensors and check for correct operation.
33. Remove three 10mm head bolts and one plastic push pull clip from front of lower engine cover into radiator support. Fit ECB under body guard (supplied) onto rear of winch cradle and between lower engine cover and radiator support. Bolt to ECB winch cradle using three M6 x 20 bolts, flat washers and nyloc nuts (supplied). Refit original bolts and plastic push pull clip to rear. **Tighten all bolts.**
34. Install ECB under body side covers (supplied) onto end of ECB under body guard and skirt return using four M6 x 20 bolts, flat washers and nyloc nuts (supplied). **Note:** Front of end on side plate sits under plastic bumper and rear of end plate sits behind plastic bumper. **Tighten all bolts.**
35. Place 40 x 6 alloy washer (supplied) between lower flange on coloured bumper section and ECB alloy under side cover. Use M6 x 40 bolt, flat washers and nyloc nuts (supplied) to secure lower flange of plastic bumper to ECB under side cover. **Note:** Inner guard lining at front of wheel arch needs to be clamped between centre under body guard and under side covers to secure in place to prevent rubbing on wheels **see figure 24**. Further access to rear bolt can be obtained through removal of plastic scrivet located higher in the wheel arch. **Tighten firmly.** Trim inner guard to match bottom of ECB under body side plates.

ENSURE NUMBER PLATE IS CLEARLY VISABLE

Note: When fitting/refitting the licence plate to the vehicle, ensure there is no obstruction to licence plate vision in accordance with local authorities. If required relocate licence plate to an alternate location.

Further VFPS Notes:

- a) Do not attach VFPS to the vehicle using anchorages not intended for this purpose (e.g. engine mounting bolts).
- b) Do not use this product for any vehicle make or model, other than those specified by the VFPS manufacturer.
- c) Do not remove the plaque or label from the VFPS.
- d) Do not modify the structure of the VFPS in any way.
- e) No accessory or fitment should project forward of the VFPS forward profile.
- f) **ENSURE THESE INSTRUCTIONS ARE LEFT WITH VEHICLE OWNER AND/OR OPERATOR.**

IMPORTANT INFORMATION

Periodically check bolts and nuts for correct tightness, especially if travelling on rough roads.



FITTING KIT

1 – ECB winch frame	8 – M8 spring washers
3 – Pair ECB sensor mounts (BJ55SY_A3AL)	2 – M6 x 40 stainless bolts
1 – ECB winch control box mount	3 – M6 x 30 bolt
1 – ECB alloy under body guard	13 – M6 x 20 bolts
1 – Pair ECB alloy under body side plates	32 – M6 flat washers
1 – ECB Air compressor mount	16 – M6 nyloc nuts
2 – 40 x 10, 6mm alloy washers	2 – M6 nuts and spring washers
6 – M12 x 1.75 x 40 bolts	1 – ECB LED Indicator / Park light kit
3 – M12 x 40 bolt and washer on 300 wire	1 – ECB fog light kit
12 – M12 flat washers	4 – Fog light trims
6 – M12 spring washers	1 – Quick click fog light kit (IC10D40S1004ECBH)
6 – M12 nuts	6 – Cable locks
4 – M10 x 1.5 x 40 bolts	1 – 2500mm length 6mm clip lock trim
4 – M10 flat washers	1 – 650mm length 6mm clip lock trim
4 – M10 spring washers	2 – 350mm length 6mm clip lock trim
6 – M8 x 30 bolts	10 – 300mm zip ties
4 – M8 nuts	10 – 150mm zip ties
2 – M8 x 25 bolts	4 – plastic screw clips (scrivets)
4 – 5/16 x 1 ¼ x 10g thick flat washers (4MM THICK)	6 – 22mm plastic button plugs
8 – M8 flat washers	

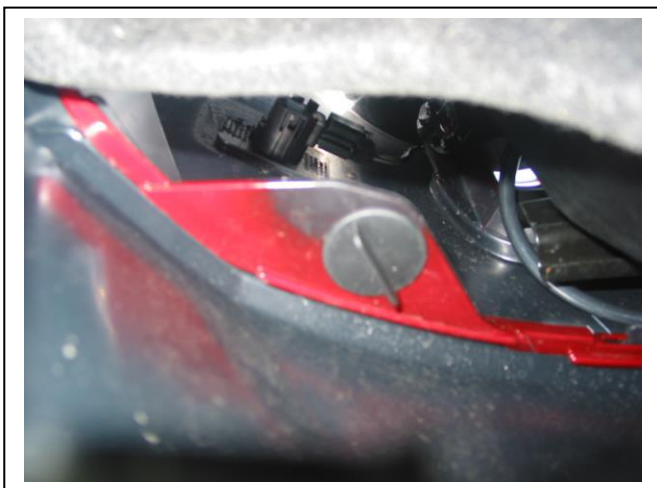


Figure 1: Twist clip holding lower bumper to upper bumper sections

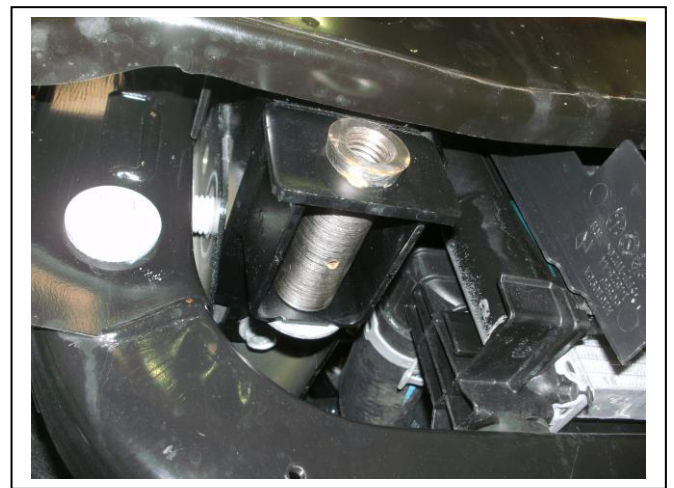


Figure 2



East Coast Bullbars (ECB Pty Ltd)

Tel: 07 3897 5700

Fax: 07 3283 1168

ecb@ecb.com.au www.ecb.com.au

WORLD'S BEST
ALLOY BULLBARS

29 Snook St
Clontarf QLD 4019
Australia

Po Box 122
Margate QLD 4019
Australia



Figure 3: Bumper with lower section fully removed.

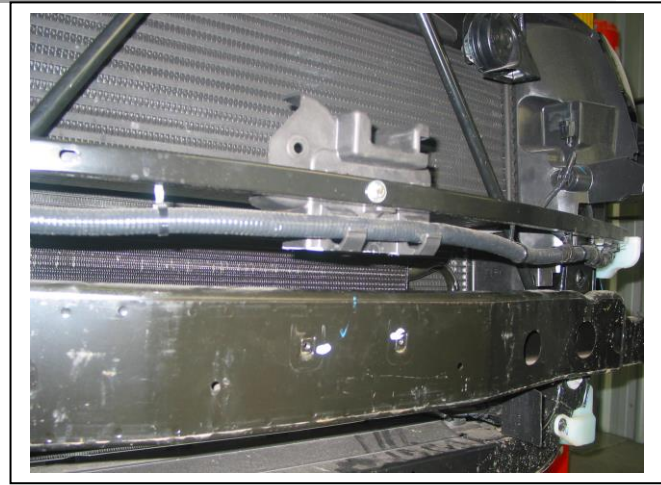


Figure 4: Hole drilled in grille locator and M6 x 35 bolt fitted.

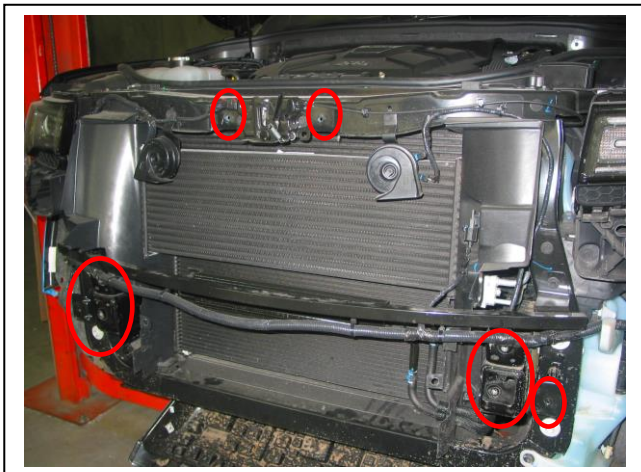


Figure 5: Bolts for removal of bumper support.



Figure 6:

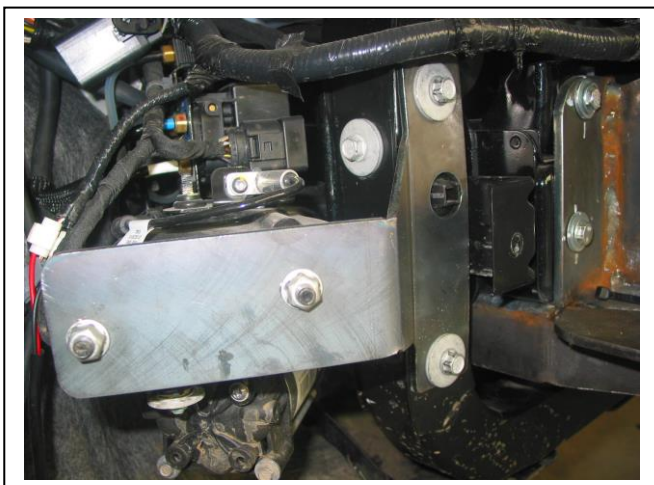


Figure 7: Air compressor mount fitted using original equipment bolts.



Figure 8: Mean mother control box with ECB control box mount fitted



Figure 9: Warn control box with ECB control box mount fitted

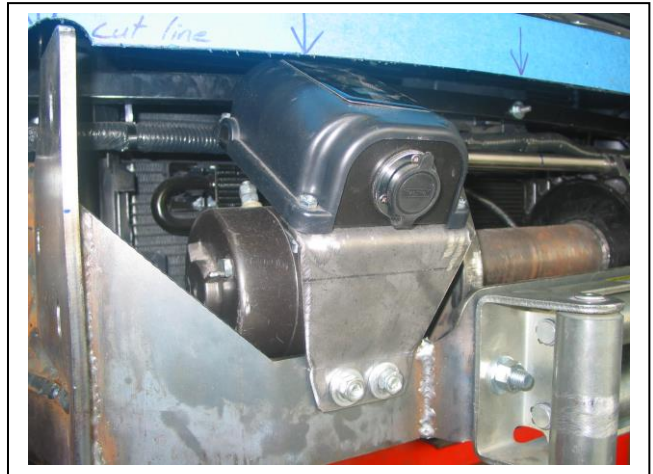


Figure 10: Mean mother control box mounted to winch frame.



Figure 11: Warn control box mounted to winch frame.



Figure 12: Top tape line on bumper. NOTE: Cut line is to bottom of tape.



Figure 13: side tape line on bumper. NOTE: Cut line on tape is to the inside.

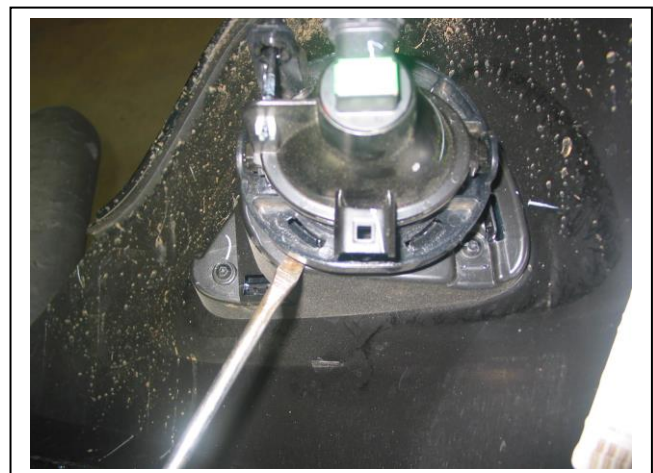


Figure 14



East Coast Bullbars (ECB Pty Ltd)

Tel: 07 3897 5700

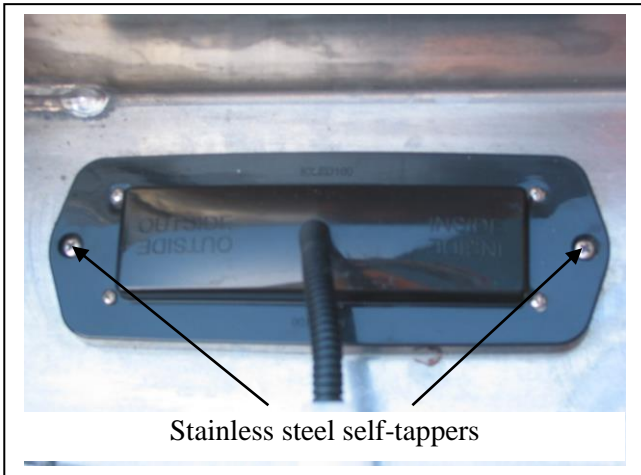
Fax: 07 3283 1168

ecb@ecb.com.au www.ecb.com.au

WORLD'S BEST ALLOY BULLBARS

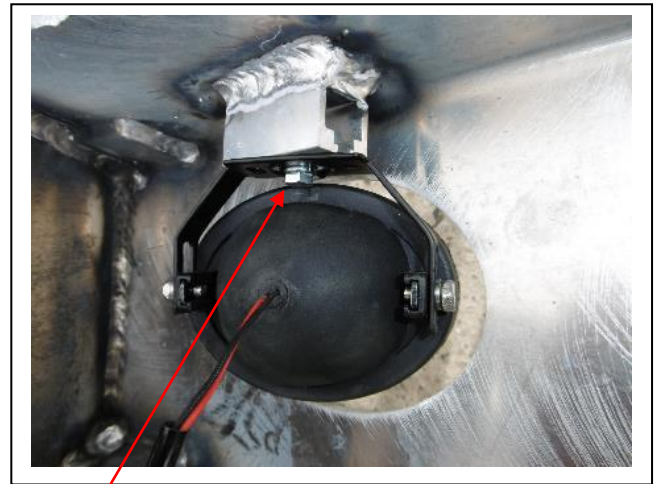
29 Snook St
Clontarf QLD 4019
Australia

Po Box 122
Margate QLD 4019
Australia



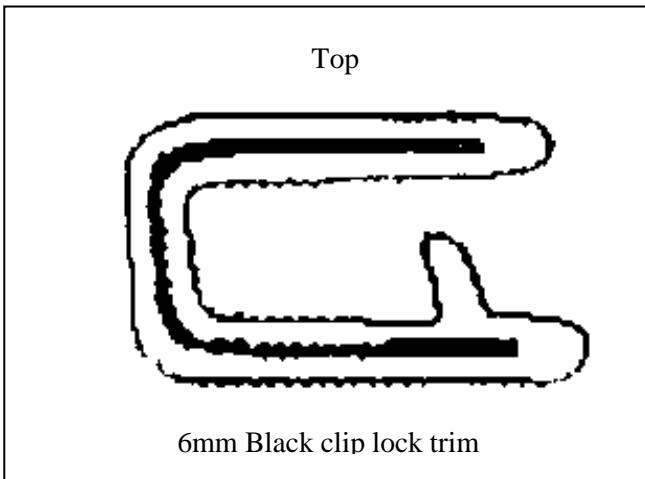
Stainless steel self-tappers

Figure 15



M6 bolt

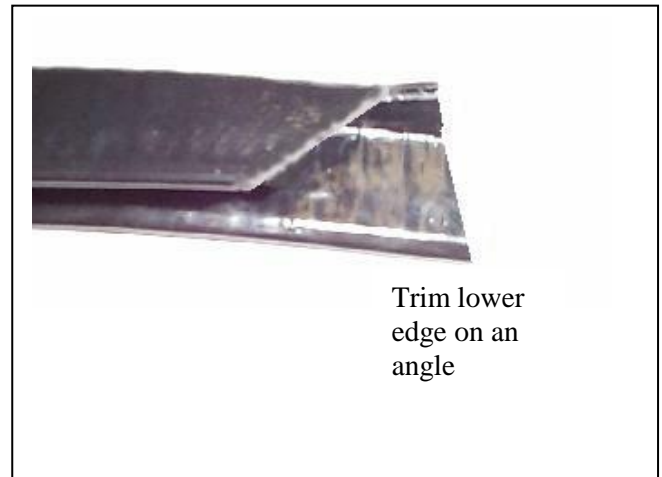
Figure 16



Top

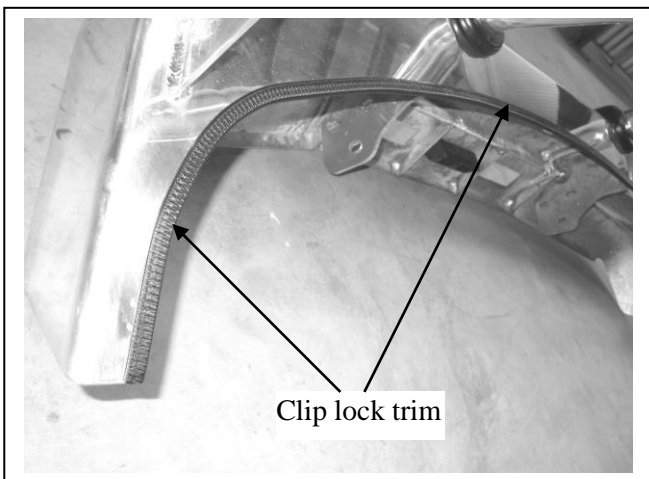
6mm Black clip lock trim

Figure 17



Trim lower edge on an angle

Figure 18



Clip lock trim

Figure 19



Figure 20: wiring harness wired into rear of Protection bar



**WORLD'S BEST
ALLOY BULLBARS**

East Coast Bullbars (ECB Pty Ltd)

Tel: 07 3897 5700

Fax: 07 3283 1168

ecb@ecb.com.au www.ecb.com.au

29 Snook St
Clontarf QLD 4019
Australia

Po Box 122
Margate QLD 4019
Australia



Figure 21: Parking sensor finish mounted.



Figure 22: Front view



Figure 23: Side view

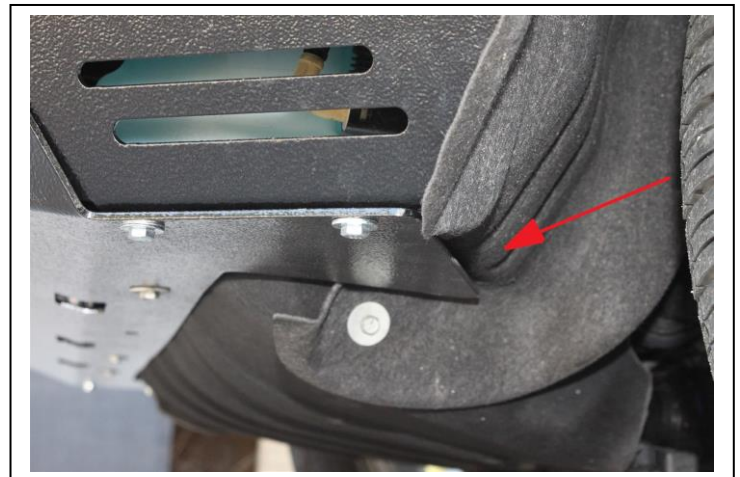


Figure 24

We value your comments

© Copyright – ECB Pty Ltd – 2016



**WORLD'S BEST
ALLOY BULLBARS**

East Coast Bullbars (ECB Pty Ltd)

Tel: 07 3897 5700

Fax: 07 3283 1168

ecb@ecb.com.au www.ecb.com.au

29 Snook St
Clontarf QLD 4019
Australia

Po Box 122
Margate QLD 4019
Australia

Dear Fitter,

ECB would like to know how you went with the installation of this product. We value your comment and may need to contact you to clarify some details so please complete your contact details clearly.

We would appreciate if you could complete as many of the following details as possible.

Your Name:	Your contact No.
Product Part No.	Product Invoice No.
Product Description:	Make, model, and year of vehicle:
Product Work Order No.	Company your from/Company product purchased from:

Date of Fitment: ____/____/____

Was the fitting hardware supplied complete? Yes No

If no what was not supplied

Did the installation go well? Yes No

Please provide comments

Please draw diagrams if you need to.

Post to
Reply Paid 122
PO Box 122
Margate QLD 4019

Fax to
(07) 3283 1168



**WORLD'S BEST
ALLOY BULLBARS**

East Coast Bullbars (ECB Pty Ltd)

Tel: 07 3897 5700

Fax: 07 3283 1168

ecb@ecb.com.au www.ecb.com.au

29 Snook St
Clontarf QLD 4019
Australia

Po Box 122
Margate QLD 4019
Australia

DESPATCH CHECKLIST



East Coast Bullbars (ECB Pty Ltd)

Tel: 07 3897 5700

Fax: 07 3283 1168

ecb@ecb.com.au www.ecb.com.au

29 Snook St
Clontarf QLD 4019
Australia

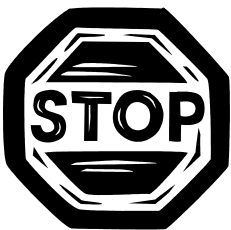
Po Box 122
Margate QLD 4019
Australia

WORLD'S BEST
ALLOY BULLBARS

BJ83SY

Work Order #		See other side of this page for photos of all mounts
Finish:		
Transport:		
Due Date:		

- OC.....1 – Steel winch frame
- BK.....3 – Pair ECB sensor mounts (BJ55SY_A3AL)
- OC.....1 – Steel control box mount
- OC.....1 – Steel air compressor mount
- OC.....1 – Alloy under body guard (P/C black ripple all bars)
- OC.....1 – Pair alloy under side covers (P/C black ripple all bars)
- BK.....1 – Bolt Kit.
- BK.....1 – LED ECB indicator / park light kit.
- BK.....1 – ECB fog light kit
- BK.....1 – Quick click fog light kit (IC10D40S1004ECBH)
- BK.....4 – fog light trims
- BK.....1 – 2500mm length 6mm clip lock
- BK.....1 – 650mm length 6mm clip lock trim
- BK.....2 – 350mm length 6mm clip lock trim
- OC.....2 – ECB Overrides – **Fitted to Bar**
- OC.....2 – 6mm Air Vents – **Fitted to Bar**



Is this product “the best it can be” Yes _____/_____

Wrapper’s initials / Checker initials

If **NO** fix before continuing

All parts checked and completed by:

Nut and bolts: _____ Date __/__/__

Order control: _____ Date __/__/__

Final wrap check: _____ Date __/__/__



East Coast Bullbars (ECB Pty Ltd)

Tel: 07 3897 5700

Fax: 07 3283 1168

ecb@ecb.com.au www.ecb.com.au

29 Snook St
Clontarf QLD 4019
Australia

Po Box 122
Margate QLD 4019
Australia

WORLD'S BEST
ALLOY BULLBARS

