



**WORLD'S BEST  
ALLOY BULLBARS**

**East Coast Bullbars (ECB Pty Ltd)**

Tel: 07 3897 5700

Fax: 07 3283 1168

ecb@ecb.com.au www.ecb.com.au

29 Snook St  
Clontarf QLD 4019  
Australia

Po Box 122  
Margate QLD 4019  
Australia

**BJ79SY**

REPLACES: 14.05.13

REVISED: 09.12.15

## **FITTING INSTRUCTIONS**

### **JEEP GRAND CHEROKEE MY12 BIG TUBE PROTECTION BAR WITH FOG LIGHTS VEHICLE FRONTAL PROTECTION SYSTEM (VFPS) FOR AIR BAG & ADR COMPLIANT VEHICLES**

Check installation hardware before commencing.

**NOTE:** This protection bar suits models with screw in tow hooks. If you do not have these on your vehicle do not proceed with this fit – contact ECB for further information

1. Lift bonnet.
2. Remove seven hand twist clips from under vehicle (three across centre rear, one (per side) from front of inner guard and one (per side) from side of bumper join accessible from area under front edge of inner guard. Remove black lower section of bumper bar by firmly pulling forward to release clips into coloured section of bumper. **See figure 1.**
3. Remove large nut from rear of tow hook on driver's side. Gently tap tow hook threaded plug forward from rear. Slide tow hook out of cradle. Undo two 16mm head bolts from cradle (bracket) to remove. **See figure 2.**
4. Using a set of side cutters, cut rear from two plastic rivets (per side) in front of wheel arches and remove one 10mm head bolt from join between coloured bumper and guard. Gently pull flare away from side of vehicle, unclipping push in clips from behind as you go. **See figure 3.**
5. Pull coloured section of bumper away from side of vehicle to release clips to side of guard, then forward to release clips under headlights. Repeat for other side. Top of bumper in centre is held by pressure of material thickness between plastic sections under grille. Gently pull to remove. Disconnect fog lights, parking sensors from drivers side (if fitted) and headlight washers from passenger's side bottle connection as removing.
6. Carefully remove parking sensors, parking sensor wiring harness (if fitted) and fog lights (three PK screws) from coloured section of bumper.
7. Splice indicator/ park wiring into original wiring harness behind headlights. Too access rear of headlight on passenger's side, open air box, remove filter and pull up on base to remove from rubber mounts.
8. Too refit air box on passenger's side, remove rubber mounts and refit to air box. Push air box back onto body mounts, replace filter and refit lid.
9. Splice fog light wiring to original equipment wiring loom.
10. Trim ends from polystyrene bumper support using a sharp knife. **See figure 4.**
11. Remove two 13mm head bolts from bumper support to chassis rail. Leave 10mm bumper bolt in place to keep in position.
12. Refit coloured section of bumper to vehicle as per reverse of step 4. As plastic rivets cannot be refitted to vehicle, drill rivet holes in coloured plastic section to 8mm and fit four plastic screw clips (supplied). Feed ECB wiring harnesses (supplied) through where fog lights are removed in original bumper. Reconnect headlight washers.



**WORLD'S BEST  
ALLOY BULLBARS**

**East Coast Bullbars (ECB Pty Ltd)**

Tel: 07 3897 5700

Fax: 07 3283 1168

ecb@ecb.com.au www.ecb.com.au

29 Snook St  
Clontarf QLD 4019  
Australia

Po Box 122  
Margate QLD 4019  
Australia

13. Install ECB steel mounting brackets (supplied) onto chassis rails where tow hooks were removed using two spacer washers per M8 x 55 bolts, spring washers and M8 and M10 flat washers between ECB steel mounts and bumper support area and four M10 x 40 bolts, spring washers and flat washers for underside holes into chassis rail (supplied)(per side). Ensure outer measurement of ECB steel mounting brackets matches' inner measurement of ECB protection bar mounts and mounts are centralised on vehicle. **Tighten all bolts. See figure 5.**
14. Fit ECB LED indicator / park lights into protection bar as per instructions supplied with the LED indicator kit. **NOTE: Ensure park light is to outside. See figure 6.**
15. Attach ECB fog lights to protection bar. Place M6 x 20 bolts, spring washers (supplied) through light mount from inside and attach nut to top. Slide assembly into light mount in Protection bar and centralize light to hole. **TIGHTEN FIRM ONLY. See figure 7.**
16. Attach 6mm clip lock trim (supplied) to top of ECB protection bar. **NOTE:** Trim off lower edge on an angle so trim will sit flush with end of protection bar. **See figures 8, 9 and 10.** Attach 6mm clip lock trim to outer holes in skirt. Trim ends of clip lock trim square and place join on vertical edge.
17. Loosely zip tie parking sensor wiring harness into rear of ECB protection bar. **See figure 11.** Should vehicle not have parking sensors, fit six plastic plugs (supplied) to sensor holes in Protection Bar.
18. Ensure parking sensors have silicon ring around edge of sensor area of part. Install and adjust parking sensors into rear of Protection bar. Parking sensor fits through parking sensor mount, mount is then fitted to lower leg of protection bar using M6 x 20 bolts, flat washers and nyloc nuts. By twisting mount, pressure can be applied to rear of parking sensor in hole. Install zip tie around mount and parking sensor to ensure firm fitment. Should vehicle not have parking sensors, insert black plastic blanking plugs into hole using a plastic hammer or similar to not damage plugs. **See figure 12. Do not over tighten**
19. Tighten parking sensor wiring harness into rear of protection bar. Ensure wiring to parking sensors does not affect fitment of parking sensors.
20. Fit ECB protection bar to ECB steel mounting brackets using ½ x 1 ½ bolts, flat washer, spring washers and nuts (supplied). **Finger tighten only.**
21. Align ECB protection bar to front of vehicle. **See figure 13 and 14** for front and rear views. **Tighten all bolts.**
22. Connect indicator park lights and fog lights and check for correct operation.
23. Connect parking sensors and check for correct operation.
24. Remove three 10mm head bolts and one plastic push pull clip from front of lower engine cover into radiator support. Fit ECB under body guard (supplied) onto top of bullbar and between lower engine cover and radiator support. Bolt to ECB protection bar using three M6 x 20 bolts, flat washers and nyloc nuts (supplied). Refit original bolts and plastic push pull clip to rear. **Tighten all bolts.**
25. Install ECB under body side covers (supplied) onto end of ECB under body guard and skirt return using four M6 x 20 bolts, flat washers and nyloc nuts (supplied). **Note:** Front of end on side plate sits under bumper and rear of end plate sits behind bumper. **Tighten all bolts.**
26. Place 40 x 6 alloy washer (supplied) between lower flange on coloured bumper section and ECB alloy under side cover. Use M6 x 40 bolt, flat washers and nyloc nuts (supplied) to secure lower flange of plastic bumper to ECB under side cover. **Note:** Inner guard lining at front of wheel arch needs to be clamped between centre under body guard and under side covers to secure in place to prevent rubbing on wheels **see figure 15.** Further access to rear



**WORLD'S BEST  
ALLOY BULLBARS**

**East Coast Bullbars (ECB Pty Ltd)**

Tel: 07 3897 5700

Fax: 07 3283 1168

ecb@ecb.com.au www.ecb.com.au

29 Snook St  
Clontarf QLD 4019  
Australia

Po Box 122  
Margate QLD 4019  
Australia

bolt can be obtained through removal of plastic scrivett located higher in the wheel arch. **Tighten firmly.** Trim inner guard to match bottom of ECB under body side plates.

27. Remove and refit the six ECB air vents in both the channel and skirt with logo at the bottom to direct the air flow.

**ENSURE NUMBER PLATE IS CLEARLY VISABLE**

**Note:** When fitting/refitting the licence plate to the vehicle, ensure there is no obstruction to licence plate vision in accordance with local authorities. If required relocate licence plate to an alternate location.

**Further VFPS Notes:**

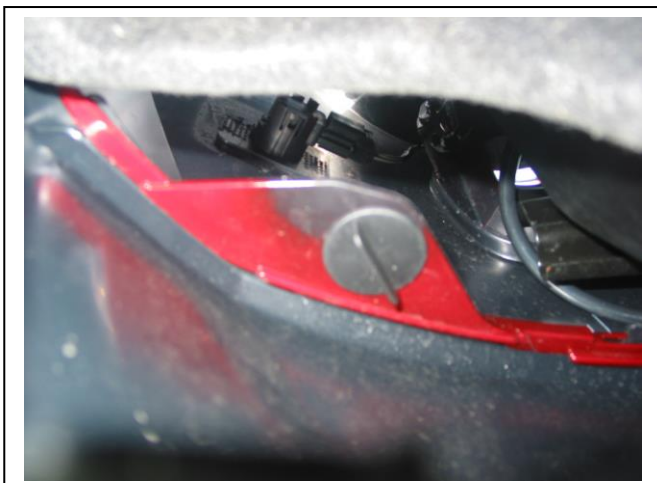
- a) Do not attach VFPS to the vehicle using anchorages not intended for this purpose (e.g. engine mounting bolts).
- b) Do not use this product for any vehicle make or model, other than those specified by the VFPS manufacturer.
- c) Do not remove the plaque or label from the VFPS.
- d) Do not modify the structure of the VFPS in any way.
- e) No accessory or fitment should project forward of the VFPS forward profile.
- f) **ENSURE THESE INSTRUCTIONS ARE LEFT WITH VEHICLE OWNER AND/OR OPERATOR.**

**IMPORTANT INFORMATION**

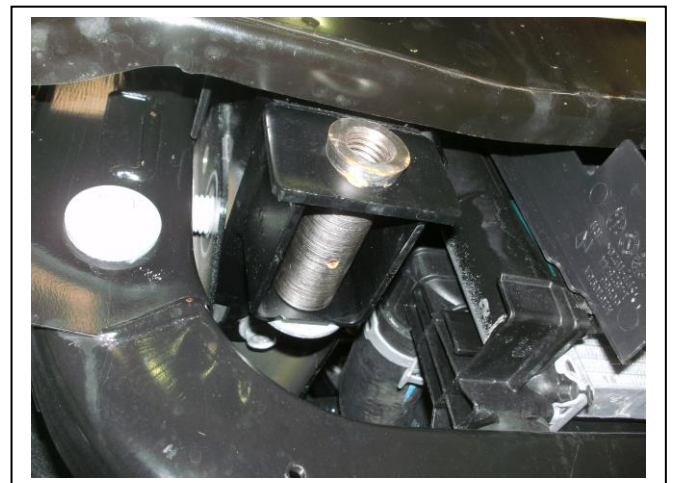
Periodically check bolts and nuts for correct tightness, especially if travelling on rough roads

**FITTING KIT**

1 – Pair ECB steel mounting brackets	19 – M6 x 20 bolts
3 – Pair ECB parking sensor mounts (BJ55SY_A3AL)	2 – M6 x 40 stainless bolts
1 – ECB alloy under body guard	40 – M6 flat washers
1 – Pair ECB alloy under body side plates	19 – M6 nyloc nuts
2 – 40 x 10, 6mm alloy washers	2 – M6 nuts and spring washer
8 – 40 x 10, 10mm steel washers	1 – ECB LED Indicator / Park light kit
4 – M10 x 1.5 x 40 bolts	1 – ECB fog light kit (35 watt)
8 – M10 flat washers	2 – Fog light trims
4 – M10 spring washers	10 – Cable locks
4 – M8 x 55 bolts	1 – 2500mm length 6mm clip lock trim
4 – M8 flat washers	2 – 500mm length 6mm clip lock trim
4 – M8 spring washers	10 – 300mm zip ties
6 – ½ x 1 ½ bolts	10 – 150mm zip ties
12 – ½ flat washers	4 – plastic screw clips (scrivett)
6 – ½ spring washers	6 – 22mm plastic button plugs
6 – ½ nuts	



**Figure 1:** Twist clip holding lower bumper to upper bumper sections



**Figure 2**





WORLD'S BEST  
ALLOY BULLBARS

East Coast Bullbars (ECB Pty Ltd)

Tel: 07 3897 5700

Fax: 07 3283 1168

ecb@ecb.com.au www.ecb.com.au

29 Snook St  
Clontarf QLD 4019  
Australia

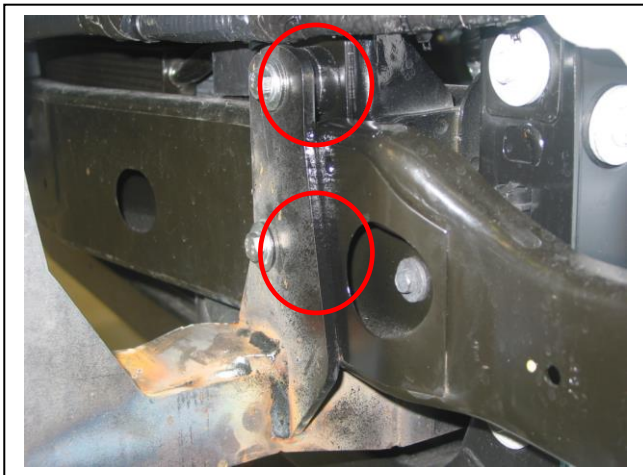
Po Box 122  
Margate QLD 4019  
Australia



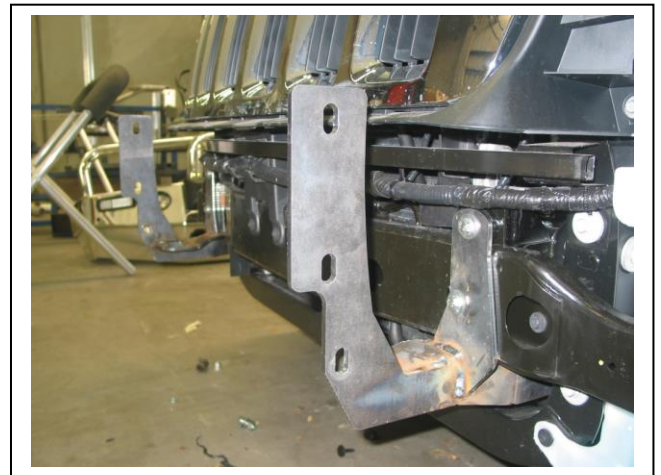
**Figure 3:** Bumper with lower section fully removed.



**Figure 4:** Trim ends off polystyrene bumper support too allow access for ECB steel mounts.



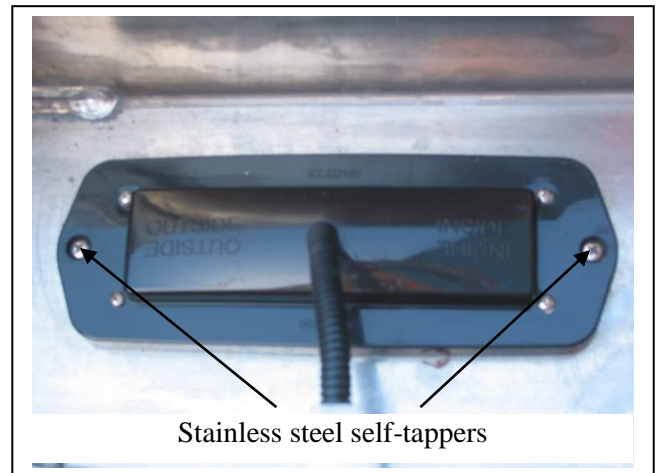
**Figure 5:** ECB steel mounting brackets showing spacer placement



**Figure 5:** ECB steel mounting brackets fitted. Bumper removed for photo.



**Figure 5:** ECB steel mounting brackets fitted. With bumper fitted.



Stainless steel self-tappers

**Figure 6**



East Coast Bullbars (ECB Pty Ltd)

Tel: 07 3897 5700

Fax: 07 3283 1168

ecb@ecb.com.au www.ecb.com.au

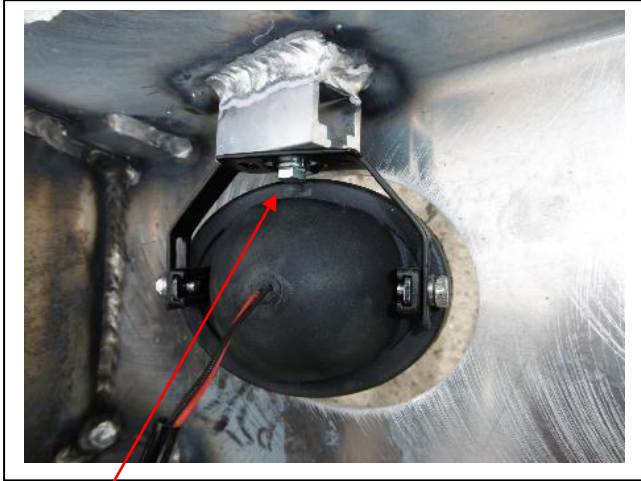
29 Snook St  
Clontarf QLD 4019

Australia

Po Box 122  
Margate QLD 4019

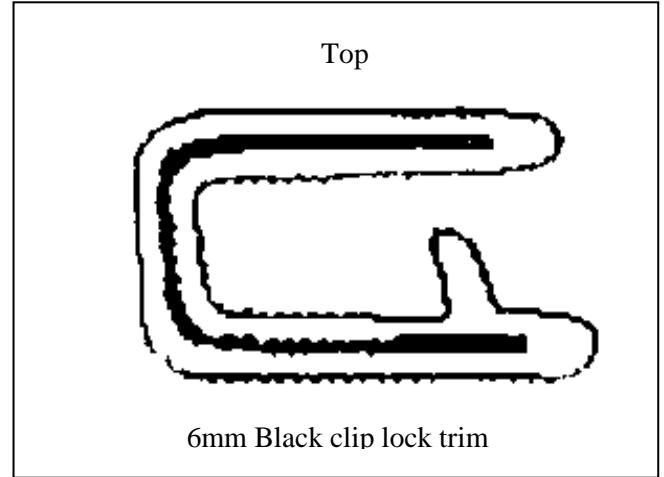
Australia

WORLD'S BEST  
ALLOY BULLBARS



M6 Bolt

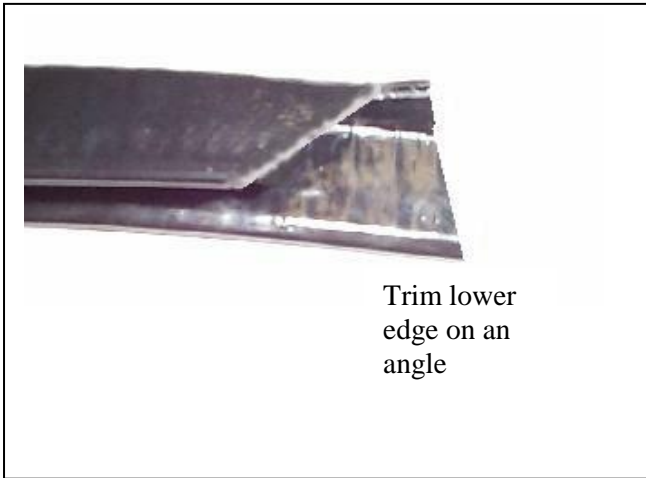
Figure 7



Top

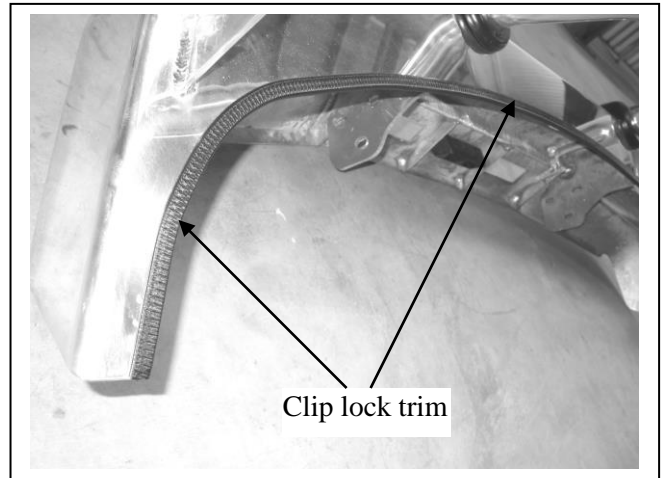
6mm Black clip lock trim

Figure 8



Trim lower  
edge on an  
angle

Figure 9



Clip lock trim

Figure 10



Figure 11: wiring harness wired into rear of  
Protection bar

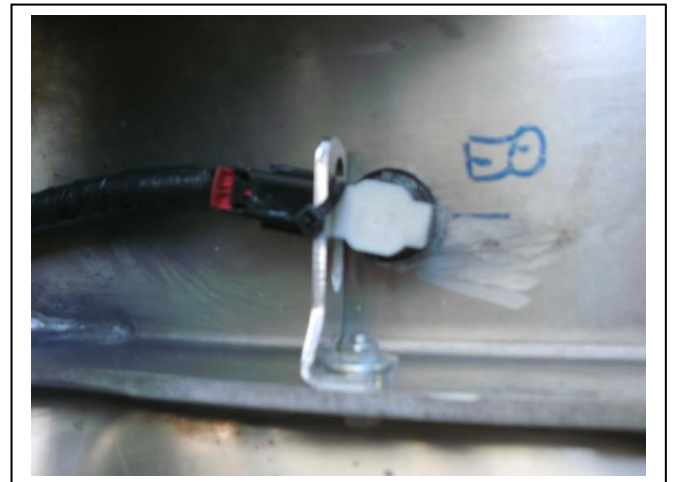


Figure 12: Parking sensor finish mounted.





**WORLD'S BEST  
ALLOY BULLBARS**

**East Coast Bullbars (ECB Pty Ltd)**

Tel: 07 3897 5700

Fax: 07 3283 1168

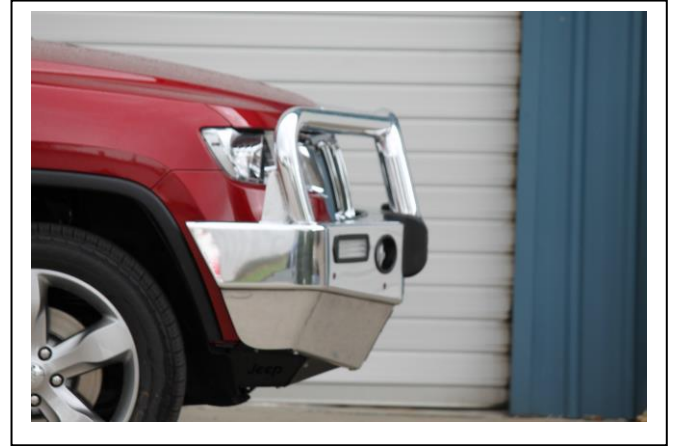
ecb@ecb.com.au www.ecb.com.au

29 Snook St  
Clontarf QLD 4019  
Australia

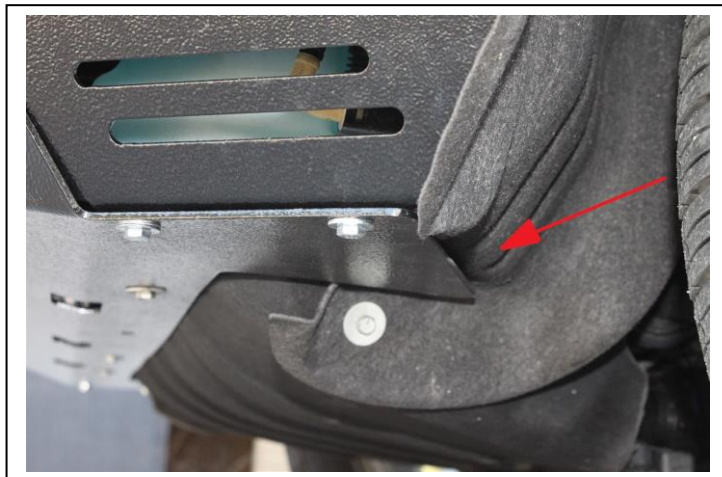
Po Box 122  
Margate QLD 4019  
Australia



**Figure 13: Front view**



**Figure 14: Side view**



**Figure 15**



**WORLD'S BEST  
ALLOY BULLBARS**

**East Coast Bullbars (ECB Pty Ltd)**

Tel: 07 3897 5700

Fax: 07 3283 1168

ecb@ecb.com.au www.ecb.com.au

29 Snook St  
Clontarf QLD 4019  
Australia

Po Box 122  
Margate QLD 4019  
Australia

**We value your comments**

Dear Fitter,

ECB would like to know how you went with the installation of this product. We value your comment and may need to contact you to clarify some details so please complete your contact details clearly.

We would appreciate if you could complete as many of the following details as possible.

<b>Your Name:</b>	<b>Your contact No.</b>
<b>Product Part No.</b>	<b>Product Invoice No.</b>
<b>Product Description:</b>	<b>Make, model, and year of vehicle:</b>
<b>Product Work Order No.</b>	<b>Company your from/Company product purchased from:</b>

**Date of Fitment:** \_\_\_\_/\_\_\_\_/\_\_\_\_

Was the fitting hardware supplied complete?      Yes      No

If no what was not supplied

---



---



---

Did the installation go well?      Yes      No

Please provide comments

---



---



---

Please draw diagrams if you need to.

**Post to**  
Reply Paid 122  
PO Box 122  
Margate QLD 4019

**Fax to**  
(07) 3283 1168



**WORLD'S BEST  
ALLOY BULLBARS**

**East Coast Bullbars (ECB Pty Ltd)**

Tel: 07 3897 5700

Fax: 07 3283 1168

[ecb@ecb.com.au](mailto:ecb@ecb.com.au) [www.ecb.com.au](http://www.ecb.com.au)

29 Snook St  
Clontarf QLD 4019  
Australia

Po Box 122  
Margate QLD 4019  
Australia





WORLD'S BEST  
ALLOY BULLBARS

East Coast Bullbars (ECB Pty Ltd)

Tel: 07 3897 5700

Fax: 07 3283 1168

ecb@ecb.com.au www.ecb.com.au

29 Snook St  
Clontarf QLD 4019  
Australia

Po Box 122  
Margate QLD 4019  
Australia

## DESPATCH CHECKLIST BJ79SY

Work Order #		<b>See other side of this page for photos of all mounts</b>
Finish:		
Transport:		
Due Date:		

- OC.....1 – Pair steel mounting brackets.
- BK.....3 – Pair ECB parking sensor mounts (BJ55SY\_A3AL) – **In kit**
- OC.....1 – Alloy under body guard (P/C black ripple all bars)
- OC.....1 – Pair alloy under side covers (P/C black ripple all bars)
- BK.....1 – Bolt Kit.
- BK.....1 – LED ECB indicator / park light kit.
- BK.....1 – ECB fog light kit (35 watt)
- BK.....2 – fog light trims
- BK.....1 – 2500mm length 6mm clip lock
- BK.....2 – 500mm length 6mm clip lock trim
- OC.....2 – ECB Overrides – **Fitted to Bar**
- CO.....6 – 6mm Air Vents – **Fitted to Bar**



Is this product “the best it can be” Yes \_\_\_\_\_ / \_\_\_\_\_  
Wrapper’s initials / Checker initials

If **NO** fix before continuing

All parts checked and completed by:

Nut and bolts: \_\_\_\_\_ Date \_\_/\_\_/\_\_

Order control: \_\_\_\_\_ Date \_\_/\_\_/\_\_

Final wrap check: \_\_\_\_\_ Date \_\_/\_\_/\_\_



**WORLD'S BEST  
ALLOY BULLBARS**

**East Coast Bullbars (ECB Pty Ltd)**

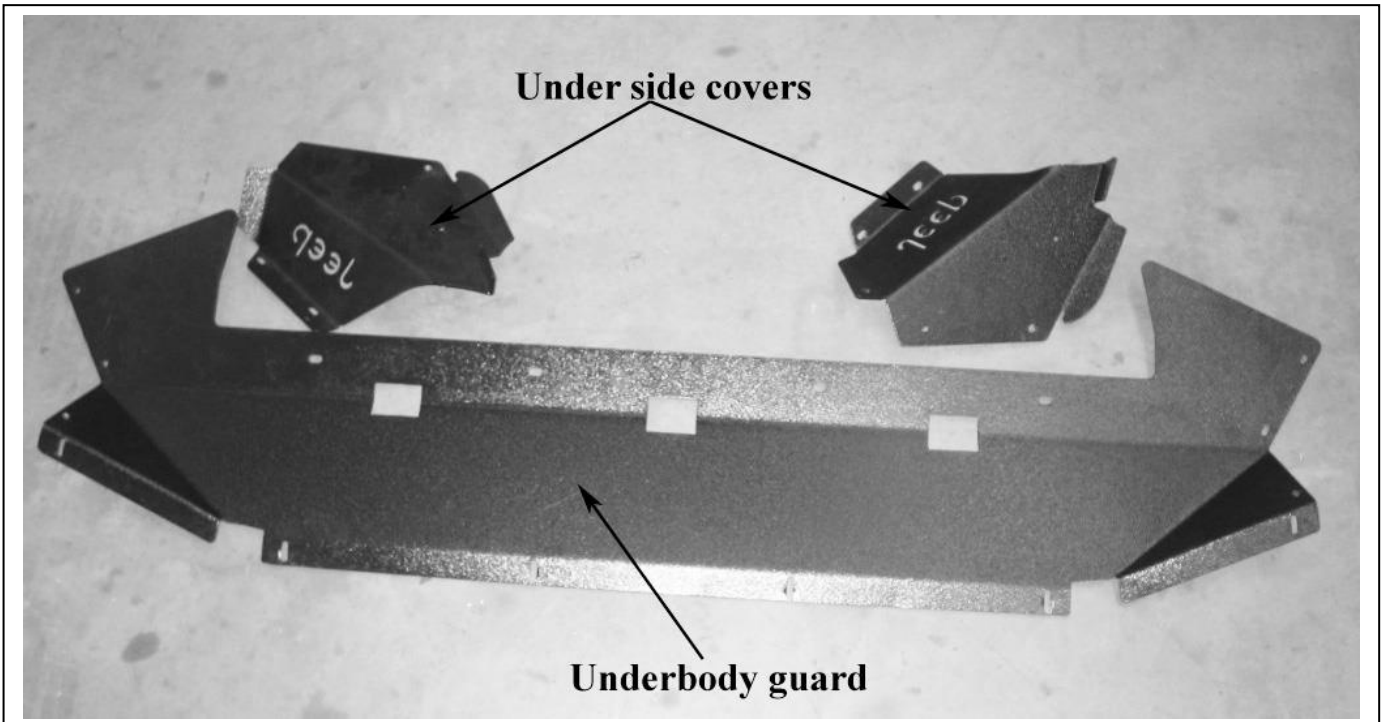
Tel: 07 3897 5700

Fax: 07 3283 1168

ecb@ecb.com.au www.ecb.com.au

29 Snook St  
Clontarf QLD 4019  
Australia

Po Box 122  
Margate QLD 4019  
Australia



\_\_\_\_\_/\_\_\_\_\_  
Wrapper's initials / Checker initials



**WORLD'S BEST  
ALLOY BULLBARS**

**East Coast Bullbars (ECB Pty Ltd)**

Tel: 07 3897 5700

Fax: 07 3283 1168

[ecb@ecb.com.au](mailto:ecb@ecb.com.au) [www.ecb.com.au](http://www.ecb.com.au)

29 Snook St  
Clontarf QLD 4019  
Australia

Po Box 122  
Margate QLD 4019  
Australia