



WORLD'S BEST
ALLOY BULLBARS

East Coast Bullbars (ECB Pty Ltd)

Tel: 07 3897 5700

Fax: 07 3283 1168

ecb@ecb.com.au www.ecb.com.au

29 Snook St
Clontarf QLD 4019
Australia

Po Box 122
Margate QLD 4019
Australia

BJ54SY

REPLACES: 04.12.09
REVISED: 11.07.10

FITTING INSTRUCTIONS

JEEP KK CHEROKEE 2/08on BIG TUBE™ BAR VEHICLE FRONTAL PROTECTION SYSTEM (VFPS) FOR AIR BAG & ADR COMPLIANT VEHICLES

Check installation hardware before commencing.

1. Remove three plastic push pull clips from front of inner guard. Open front of inner guard to allow access to front of chassis rail.
2. Remove tow bracket from drivers side lower bumper opening (three 15mm head bolts).
3. Trim black side section of lower bumper opening using a small saw or die grinder. **See figures 1 and 2.**
4. Remove tow bracket bolt plate from inside of drivers side chassis rail and speed nut from single nut side of tow bracket. Replace with ECB bolt plates (single to inner and double to outer) (supplied) in same holes. Place ECB nut plates (supplied) in same holes on passenger side of vehicle.
5. With tow hook to inside of vehicle, attach ECB steel mounting brackets onto vehicle using three 3/8 nuts, flat washers and spring washers (per side) (supplied). **Finger tighten only. See figure 3.**
6. Align mounts centrally on vehicle using outside measurement of alloy mount on protection bar to inside measurement of ECB steel mounting bracket. **Tighten all bolts.** Access outer bolts from behind inner guards. **See figure 4. Caution:** Ensure cooler lines are not rubbing against mounts. Adjustment to zip ties on cooler lines may be required.
7. Splice ECB indicator / park light wiring harness (supplied) into original wiring harness using cable locks (supplied). Extra wiring has been supplied to lengthen ECB wiring harness to reach park light wiring. Join to ECB wiring harness using bullet connectors (supplied).
8. Fit ECB LED indicator / park lights into protection bar as per instructions supplied with the LED indicator kit. **NOTE: Ensure park light is to outside. See figure 5.**
9. Attach 6mm clip lock trim (supplied) to top of ECB protection bar. **NOTE:** Trim off lower edge on an angle so trim will sit flush with end of protection bar. **See figures 6, 7 and 8.**
10. Attach protection bar to inside of steel mounts using two ½ x 1 ½ bolts, flat washers, spring washers and nuts (per side) (supplied). **Finger tighten only.**
11. Align protection bar with vehicle. **See figures 9 and 10. Tighten all bolts.**
12. Connect indicator/ park lights. Check for correct operation.
13. Refit inner guards to original specifications.

ENSURE NUMBER PLATE IS CLEARLY VISABLE



**WORLD'S BEST
ALLOY BULLBARS**

East Coast Bullbars (ECB Pty Ltd)

Tel: 07 3897 5700

Fax: 07 3283 1168

ecb@ecb.com.au www.ecb.com.au

29 Snook St
Clontarf QLD 4019
Australia

Po Box 122
Margate QLD 4019
Australia

Note: When fitting/refitting the licence plate to the vehicle, ensure there is no obstruction to licence plate vision in accordance with local authorities. If required relocate licence plate to an alternate location.

Further VFPS Notes:

- a) Do not attach VFPS to the vehicle using anchorages not intended for this purpose (e.g. engine mounting bolts).
- b) Do not use this product for any vehicle make or model, other than those specified by the VFPS manufacturer.
- c) Do not remove the plaque or label from the VFPS.
- d) Do not modify the structure of the VFPS in any way.
- e) No accessory or fitment should project forward of the VFPS forward profile.
- f) **ENSURE THESE INSTRUCTIONS ARE LEFT WITH VEHICLE OWNER AND/OR OPERATOR.**

IMPORTANT INFORMATION

Periodically check bolts and nuts for correct tightness, especially if travelling on rough roads

FITTING KIT

1 – Pair ECB steel mounting brackets	4 – ½ nuts
2 – Two bolt steel plates (two 3/8 x 1 ½ bolts welded)	1 – ECB LED Indicator / Park light kit
2 – One bolt steel plates (one 3/8 x 1 ½ bolts welded)	6 – Cable locks
6 – 3/8 nuts	2 – 800mm length 2 core wire
6 – 3/8 flat washers	2 – 800mm length single core wire
6 – 3/8 spring washers	6 – Female bullet connectors
4 – ½ x 1 ½ bolts	6 – Male bullet connectors
8 – ½ flat washers	1 – 2000mm length 6mm clip lock trim
4 – ½ spring washers	



Figure 1 – Passengers side lower vent shown ready marked for cut

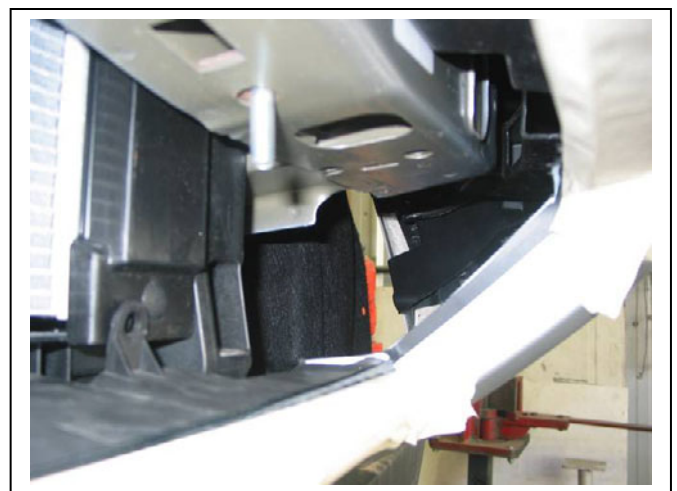


Figure 2 – After cut complete



**WORLD'S BEST
ALLOY BULLBARS**

East Coast Bullbars (ECB Pty Ltd)

Tel: 07 3897 5700

Fax: 07 3283 1168

ecb@ecb.com.au www.ecb.com.au

29 Snook St
Clontarf QLD 4019
Australia

Po Box 122
Margate QLD 4019
Australia

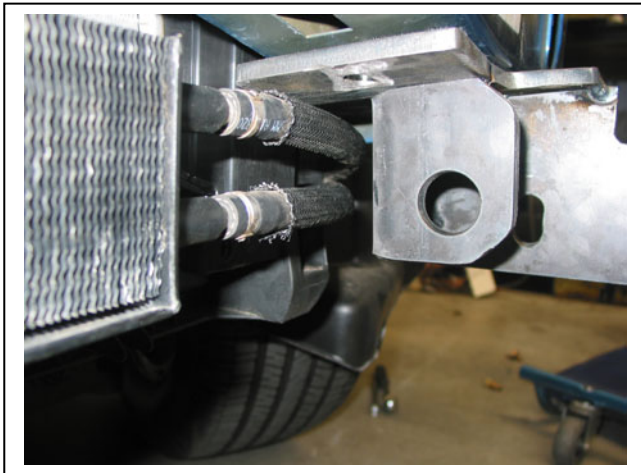


Figure 3 – Passenger side mount with oil cooler fitted

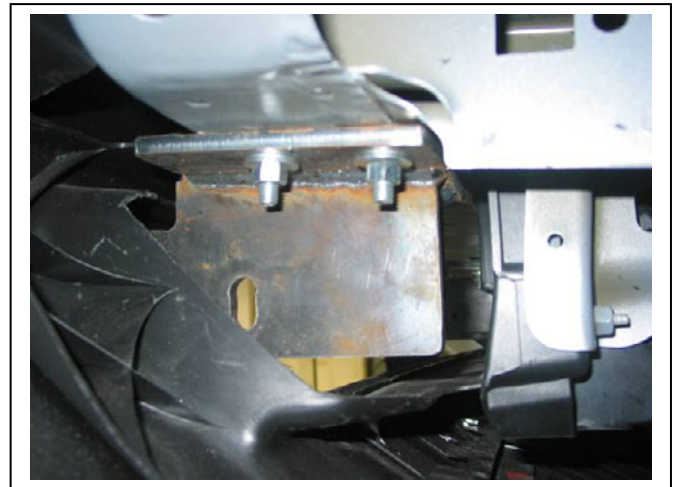
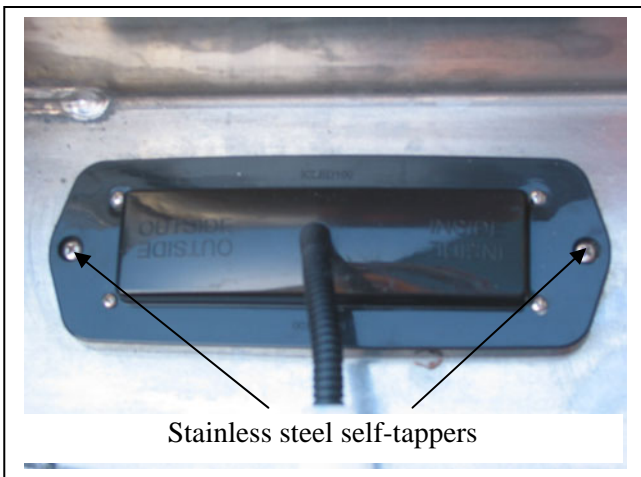
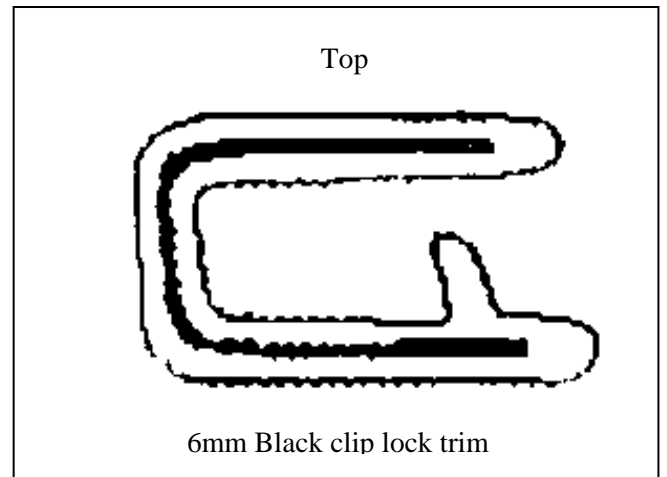


Figure 4 – Passenger side mount as seen from under guard (oil cooler removed)



Stainless steel self-tappers

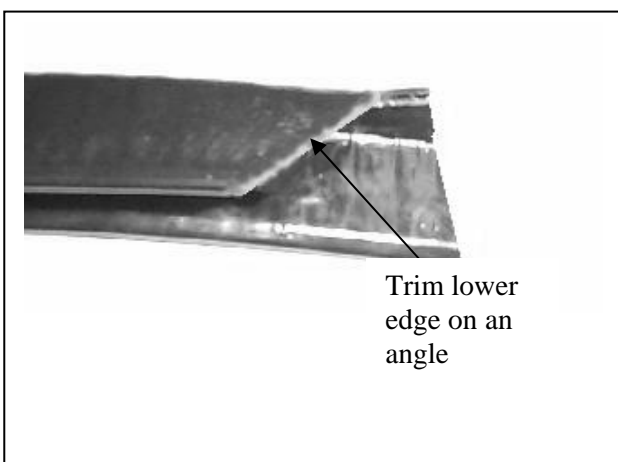
Figure 5



Top

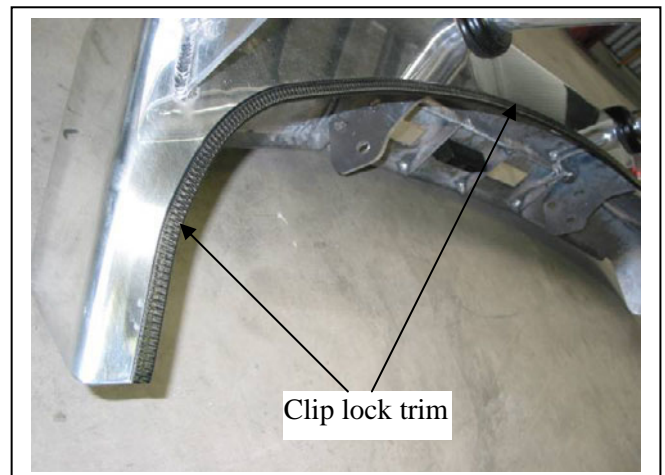
6mm Black clip lock trim

Figure 6



Trim lower edge on an angle

Figure 7



Clip lock trim

Figure 8



**WORLD'S BEST
ALLOY BULLBARS**

East Coast Bullbars (ECB Pty Ltd)

Tel: 07 3897 5700

Fax: 07 3283 1168

ecb@ecb.com.au www.ecb.com.au

29 Snook St
Clontarf QLD 4019
Australia

Po Box 122
Margate QLD 4019
Australia



Figure 9 – Front view



Figure 10 – Side view



**WORLD'S BEST
ALLOY BULLBARS**

East Coast Bullbars (ECB Pty Ltd)

Tel: 07 3897 5700

Fax: 07 3283 1168

ecb@ecb.com.au www.ecb.com.au

29 Snook St
Clontarf QLD 4019
Australia

Po Box 122
Margate QLD 4019
Australia

We value your comments

Dear Fitter,

ECB would like to know how you went with the installation of this product. We value your comment and may need to contact you to clarify some details so please complete your contact details clearly.

We would appreciate if you could complete as many of the following details as possible.

Your Name:	Your contact No.
Product Part No.	Product Invoice No.
Product Description:	Make, model, and year of vehicle:
Product Work Order No.	Company your from/Company product purchased from:

Date of Fitment: ____/____/____

Was the fitting hardware supplied complete?

Yes

No

If no what was not supplied

Did the installation go well?

Yes

No

Please provide comments

Please draw diagrams if you need to.

Post to

Reply Paid 122

PO Box 122

Margate QLD 4019

Fax to

(07) 3283 1168



**WORLD'S BEST
ALLOY BULLBARS**

East Coast Bullbars (ECB Pty Ltd)

Tel: 07 3897 5700

Fax: 07 3283 1168

ecb@ecb.com.au www.ecb.com.au

29 Snook St
Clontarf QLD 4019
Australia

Po Box 122
Margate QLD 4019
Australia



WORLD'S BEST
ALLOY BULLBARS

East Coast Bullbars (ECB Pty Ltd)

Tel: 07 3897 5700

Fax: 07 3283 1168

ecb@ecb.com.au www.ecb.com.au

29 Snook St
Clontarf QLD 4019
Australia

Po Box 122
Margate QLD 4019
Australia

DESPATCH CHECKLIST BJ54SY

Work Order #	
Finish:	
Transport:	
Due Date:	

- 1 – Pair Steel mounting brackets.
- 1 – Bolt Kit.
- 2 – 800mm length 2 core wire
- 2 – 800mm length 1 core wire
- 1 – LED ECB indicator / park light kit
- 1 – 2000mm length 6mm clip lock
- 2 – ECB Overriders (**fitted to bar**)
- 2 – Round surrounds (**fitted to skirt**)
- 1 – 6mm air vent trim (**fitted to skirt**)

See other side of
page for picture
of mounts



Is this product “the best it can be” Yes _____ / _____
Wrapper's initials / Checker initials

If **NO** fix before continuing

All parts checked and completed by:

Nut and bolts: _____ Date __/__/__

Order control: _____ Date __/__/__

Final wrap check: _____ Date __/__/__



**WORLD'S BEST
ALLOY BULLBARS**

East Coast Bullbars (ECB Pty Ltd)

Tel: 07 3897 5700

Fax: 07 3283 1168

ecb@ecb.com.au www.ecb.com.au

29 Snook St
Clontarf QLD 4019
Australia

Po Box 122
Margate QLD 4019
Australia

