



WORLD'S BEST
ALLOY BULLBARS

East Coast Bullbars (ECB Pty Ltd)

Tel: 07 3897 5700

Fax: 07 3283 1168

ecb@ecb.com.au www.ecb.com.au

29 Snook St
Clontarf QLD 4019
Australia

Po Box 122
Margate QLD 4019
Australia

BH41SY

REPLACES: 11.03.10

REVISED: 17.01.18

FITTING INSTRUCTIONS

RODEO RA 03/03–12/06 LT BIG TUBE™ PROTECTION BAR VEHICLE FRONTAL PROTECTION SYSTEM (VFPS) FOR AIR BAG AND ADR COMPLIANT VEHICLES

Check installation hardware before commencing.

1. Lift bonnet.
2. Remove grille. Four clips along top, one PK self-tapper just below Holden badge and two push in-out clips at bottom.
3. Remove bumper cover. Five plastic clips along top under grille area, two 10mm head self-tappers and one plastic clip (each side). Two plastic clips at bottom.
4. Remove cross member from front of chassis. Four 14mm head bolts. **See figure 1.**
5. Remove front 14mm head bolts from under chassis protection plate and let hang down.
6. Remove grille support from vehicle, ten 10mm head nuts and one plastic PK clip (each side) from plastic inner guard. Cut sides off beside outer grille mount. **See figures 2 and 3.** Paint exposed metal and refit to centre of vehicle. Refit grille.
7. Attach ECB steel mounting brackets (supplied) to front of chassis. Use M10 x 35 x 1.25 bolts/washers (supplied). **See figures 4 and 5. FINGER TIGHTEN ONLY.**
8. Centre steel mounting brackets on vehicle, ensuring sufficient distance apart for protection bar to mount on inside of steel mounting brackets. **Check protection bar measurement.** Refit chassis protection plate over steel mounting brackets. Use M10 x 35 x 1.25 bolts/washers (supplied). **TIGHTEN** steel mounting brackets in position. **NOTE:** Two extra 3/8 flat washers are supplied for spacers between lower welded bracket on steel mount and chassis if required.
9. Cut original fog light plug from original wiring. Crimp female terminals from fog light kit to existing wiring.
10. Splice ECB indicator/park light wiring into original wiring loome. Use cable locks (supplied).
11. Attach infill trim (supplied) to top sides of ECB protection bar. Attach 1000mm of 6mm clip lock trim (supplied) to centre of protection bar **NOTE:** On infill trim, trim 30mm off lower edge so trim will sit over end of protection bar. **See figures 6, 7 and 8. Trim excess off end to follow protection bar. See figure 9. NOTE:** Seal any exposed edges of trim with silicone or similar to avoid corrosion of inner steel.
12. Fit ECB LED indicator / park lights (supplied) into protection bar as per instructions supplied with the LED indicator kit. **NOTE: Ensure park light is to outside. See figure 10.**
13. Attach ECB fog lights to protection bar. Place M6 x 20 bolts, spring washers (supplied) through light mount from inside and attach nut to top. Slide assembly into light mount in Protection bar and centralize light to hole. **TIGHTEN FIRM ONLY.** Fit ECB fog light trims (supplied) to protection bar. **NOTE:** Wider part of trim faces to centre. **See figure 10.**



**WORLD'S BEST
ALLOY BULLBARS**

East Coast Bullbars (ECB Pty Ltd)

Tel: 07 3897 5700

Fax: 07 3283 1168

ecb@ecb.com.au www.ecb.com.au

29 Snook St
Clontarf QLD 4019
Australia

Po Box 122
Margate QLD 4019
Australia

14. Attach ECB protection bar to inside of steel mounting brackets. Use six ½ x 1 ½ bolts, nuts and washers (supplied).
15. Align protection bar with approximately 3-5mm clearance off grille and infill trim just contacting headlights. **See figures 12, 13 and 14.**
16. **TIGHTEN ALL BOLTS/NUTS.**
17. Fold plastic inner guard around steel inner panel and over stud. Use 6mm (10mm head) nut previously removed with ¼ flat washer (supplied). **See figure 15.**
18. Connect ECB indicator/park lights and fog lights check operation.
19. Aim ECB fog lamps at low beam height. **TIGHTEN IN POSITION.**

ENSURE NUMBER PLATE IS CLEARLY VISABLE

Note: When fitting/refitting the licence plate to the vehicle, ensure there is no obstruction to licence plate vision in accordance with local authorities. If required relocate licence plate to an alternate location.

Further VFPS Notes:

- a) Do not attach VFPS to the vehicle using anchorages not intended for this purpose (e.g. engine mounting bolts).
- b) Do not use this product for any vehicle make or model, other than those specified by the VFPS manufacturer.
- c) Do not remove the plaque or label from the VFPS.
- d) Do not modify the structure of the VFPS in any way.
- e) No accessory or fitment should project forward of the VFPS forward profile.
- f) **ENSURE THESE INSTRUCTIONS ARE LEFT WITH VEHICLE OWNER AND/OR OPERATOR.**

IMPORTANT INFORMATION

Periodically check bolts and nuts for correct tightness, especially if travelling on rough roads

FITTING KIT

2 – Steel mounting brackets.	1 – 1000mm length 6mm clip lock.
6 – M10 x 35 x 1.25 bolts.	6 – Cable locks.
6 – ½ x 1 ½ bolts/nuts.	2 – ¼ flat washers.
8 – 10mm flat washers.	2 – ECB fog lights and wiring kit.
6 – 10mm spring washers.	2 – ECB fog light trims.
12 – ½ flat washers.	2 – M6 x 20 bolts.
6 – ½ spring washers.	2 – M6 nuts
1 – ECB LED Indicator / Park light kit	2 – M6 flat washers.
2 – 610mm lengths infill trim.	2 – M6 spring washers



East Coast Bullbars (ECB Pty Ltd)

Tel: 07 3897 5700

Fax: 07 3283 1168

ecb@ecb.com.au www.ecb.com.au

29 Snook St
Clontarf QLD 4019
Australia

Po Box 122
Margate QLD 4019
Australia

Cross member

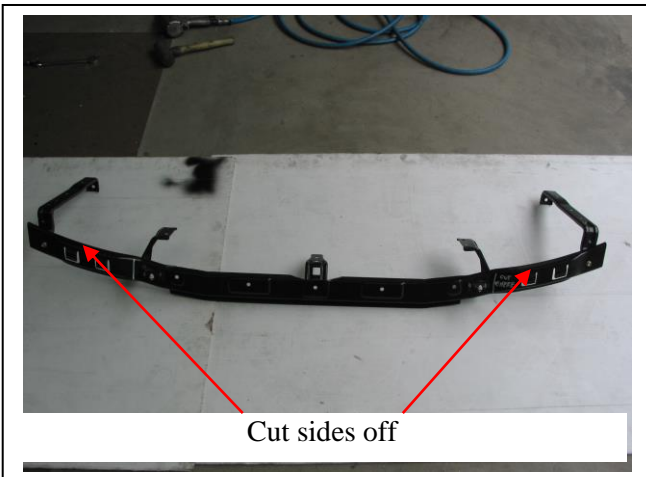


Figure 1

Cut grille support sides off under headlights

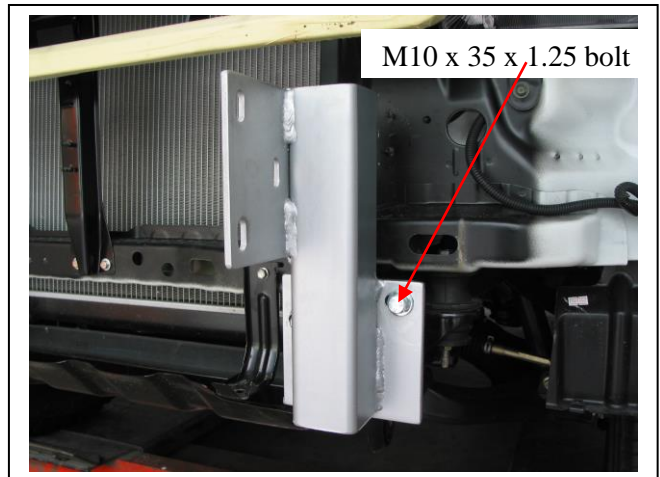


Figure 2



Cut sides off

Figure 3



M10 x 35 x 1.25 bolt

Figure 4 – Passenger side shown

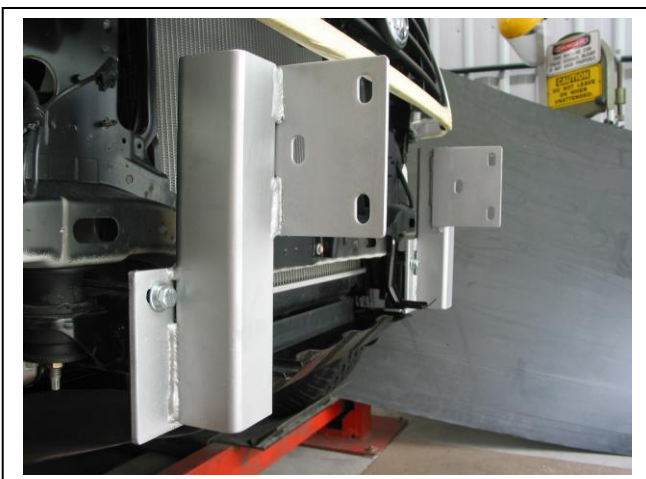
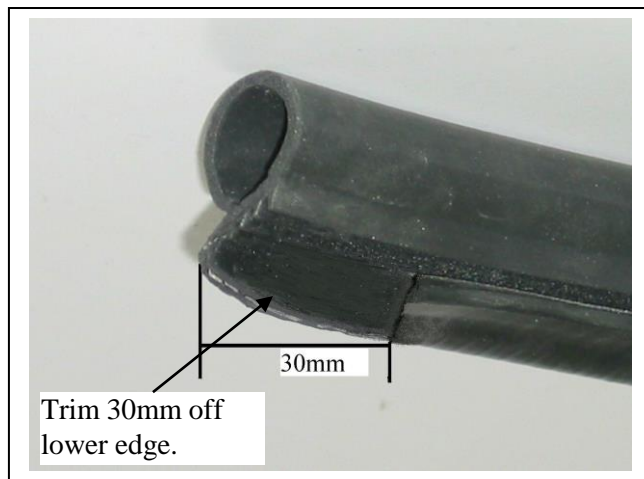


Figure 5 – Drivers side shown



Trim 30mm off lower edge.

Figure 6



East Coast Bullbars (ECB Pty Ltd)

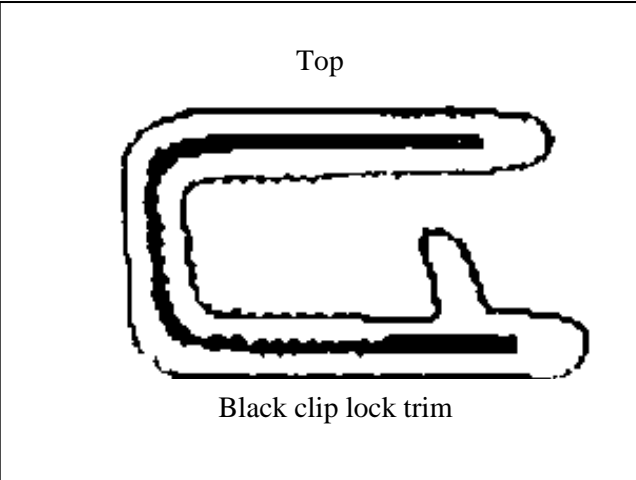
Tel: 07 3897 5700

Fax: 07 3283 1168

ecb@ecb.com.au www.ecb.com.au

29 Snook St
Clontarf QLD 4019
Australia

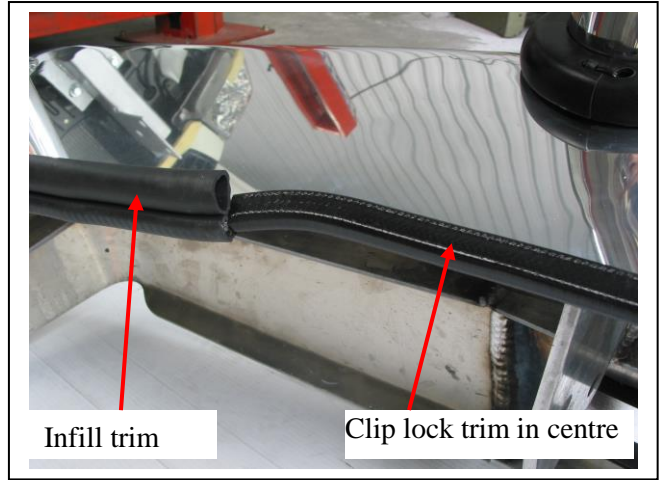
Po Box 122
Margate QLD 4019
Australia



Top

Black clip lock trim

Figure 7



Infill trim

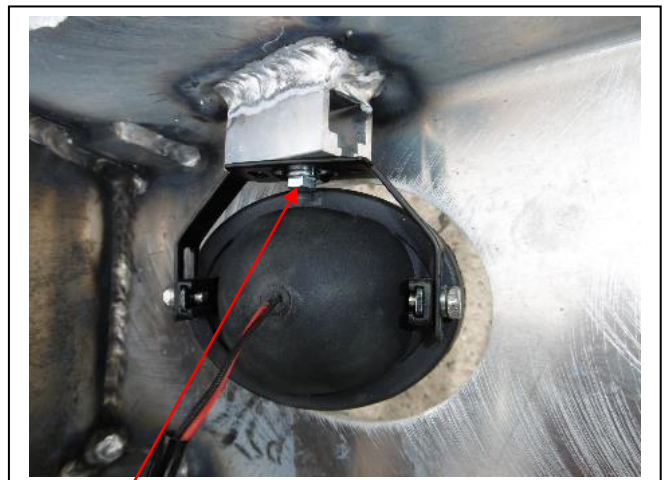
Clip lock trim in centre

Figure 8



Trim to follow protection bar angle

Figure 9



M6 bolt

Figure 10



Infill trim

Figure 11

6mm clip lock trim



6mm clip lock with 3-5mm clearance

Figure 12



**WORLD'S BEST
ALLOY BULLBARS**

East Coast Bullbars (ECB Pty Ltd)

Tel: 07 3897 5700

Fax: 07 3283 1168

ecb@ecb.com.au www.ecb.com.au

29 Snook St
Clontarf QLD 4019
Australia

Po Box 122
Margate QLD 4019
Australia



Figure 13



6mm
nut/washer

Figure 14

Plastic inner guard
folded around



**WORLD'S BEST
ALLOY BULLBARS**

East Coast Bullbars (ECB Pty Ltd)

Tel: 07 3897 5700

Fax: 07 3283 1168

ecb@ecb.com.au www.ecb.com.au

29 Snook St
Clontarf QLD 4019
Australia

Po Box 122
Margate QLD 4019
Australia

We value your comments

Dear Fitter,

ECB would like to know how you went with the installation of this product. We value your comment and may need to contact you to clarify some details so please complete your contact details clearly.

We would appreciate if you could complete as many of the following details as possible.

Your Name:	Your contact No.
Product Part No.	Product Invoice No.
Product Description:	Make, model, and year of vehicle:
Product Work Order No.	Company your from/Company product purchased from:

Date of Fitment: ____/____/____

Was the fitting hardware supplied complete?

Yes

No

If no what was not supplied

Did the installation go well?

Yes

No

Please provide comments

Please draw diagrams if you need to.

Post to
Reply Paid 122
PO Box 122
Margate QLD 4019

Fax to
(07) 3283 1168



WORLD'S BEST ALLOY BULLBARS

East Coast Bullbars (ECB Pty Ltd)

Tel: 07 3897 5700

Fax: 07 3283 1168

ecb@ecb.com.au www.ecb.com.au

29 Snook St
Clontarf QLD 4019
Australia

Po Box 122
Margate QLD 4019
Australia

DESPATCH CHECKLIST BH41SY

ICZBKCH41



Work Order #	
Finish:	
Transport:	
Due Date:	

- 2 – Steel mounting brackets.
- 1 – Bolt Kit
- 1 – ECB LED Indicator / Park light kit.
- 2 – ECB fog lights and wiring kit.
- 2 – ECB fog light trims.
- 1 – 1000mm length 6mm clip lock.
- 2 – 610mm lengths infill trim.
- 2 – ECB overrides – **Fitted to bar.**
- 2 – 6mm air scoops – **Fitted to bar.**
- 3 – 3mm air scoops – **Fitted to bar.**

**See other side of
this page for
photos of all
mounts**



Is this product “the best it can be” Yes _____ / _____
Wrapper’s initials / Checker initials

If NO fix before continuing

All parts checked and completed by:

Nut and bolts: _____ Date __/__/__

Order control: _____ Date __/__/__

Final wrap check: _____ Date __/__/__



**WORLD'S BEST
ALLOY BULLBARS**

East Coast Bullbars (ECB Pty Ltd)

Tel: 07 3897 5700

Fax: 07 3283 1168

ecb@ecb.com.au www.ecb.com.au

29 Snook St
Clontarf QLD 4019
Australia

Po Box 122
Margate QLD 4019
Australia

