



WORLD'S BEST
ALLOY BULLBARS

East Coast Bullbars (ECB Pty Ltd)

Tel: 07 3897 5700

Fax: 07 3283 1168

ecb@ecb.com.au www.ecb.com.au

29 Snook St
Clontarf QLD 4019
Australia

Po Box 122
Margate QLD 4019
Australia

BH32SY

REPLACES: 09.02.10
REVISED: 17.01.18

FITTING INSTRUCTIONS

HOLDEN CAPTIVA 9/06on BIG TUBE™ BAR WITH FOG LAMPS VEHICLE FRONTAL PROTECTION SYSTEM (VFPS) FOR AIR BAG & ADR COMPLIANT VEHICLES

Check installation hardware before commencing.

1. Lift bonnet.
2. Remove plastic fill panel between grille and radiator support. Eleven plastic clips.
3. Release outside of bumper cover. Remove two 7mm head screws (per side) from wheel arch, one 7mm head screw (per side) from rear of bumper wiring up into guard and two 7mm head screws (per side) under sides of bumper. Carefully pull side of bumper out from vehicle to release plastic clips.
4. Remove headlamps. Three 10mm bolts (per side), two bolts from top, one bolt on inside bottom corner. Pull light forward to remove from lower outside clip. Carefully disconnect wiring from headlamps and fog lamps (if fitted).
5. Remove under body protection cover. Five 12mm head bolts and two plastic screw clips.
6. Remove bumper cover. Two plastic screw clips at top between grille and headlamp, one plastic screw clip (per side) under headlamp and four plastic screws clips behind bottom of grille. Lift top of bumper cover to release location pins and carefully pull away from vehicle.
7. Remove four 12mm head bolts (per side) from front of bumper support into crash can assembly. Remove top outer 12mm head bolt (per side) from crash can to chassis rail. **See figure 1.** Pull bumper support away from crash can assembly to release location pins.
8. Working on one side at a time, fit ECB steel mounting brackets (supplied) between bumper support bracket and crash can assembly. Using one M8 x 1.25 x 35 bolt, flat and spring washers (supplied). Fit rear leg of steel mounting bracket to front of chassis rail. Use 8mm steel washer (supplied) between steel mounting bracket and front of chassis rail as a spacer. **FINGER TIGHTEN ONLY.** Repeat for other side. **See figures 2 and 3.**
9. Using four M8 x 1.25 x 35mm bolts, flat and spring washers (per side) (supplied), bolt bumper support through steel mounting brackets and back into original position. **FINGER TIGHTEN ONLY.**
10. Align mounts centrally to vehicle using alloy protection bar for mount measurement, inside of alloy protection bar mounts to outside of steel mounting brackets. **TIGHTEN ALL BOLTS.**
11. From rear of bumper cover, remove fog lamp, fog lamp surrounds and outside of lower grille area using a PK screw driver. Centre section can be left in cover and end screws replaced. **CAUTION:** Use smaller screws to retain centre section. Larger screws will puncture outside of bar. **See figure 4.**
12. Splice ECB wiring into original wiring loom for fog lamps and indicator / park lights. Using cable locks (supplied). Check for correct operation.
13. Refit bumper cover and headlamps as per reverse of steps 1 to 6. Feed ECB wiring harness through removed lower grille area to outside of bar. **See figure 5.**



**WORLD'S BEST
ALLOY BULLBARS**

East Coast Bullbars (ECB Pty Ltd)

Tel: 07 3897 5700

Fax: 07 3283 1168

ecb@ecb.com.au www.ecb.com.au

29 Snook St
Clontarf QLD 4019
Australia

Po Box 122
Margate QLD 4019
Australia

14. Connect ECB indicator / park light to wiring and place in removed grille holes to outside of steel mounting brackets.
15. Fit 3mm clip lock trim (supplied) to skirt cut out. Trim ends of clip lock trim to fit neatly against channel. **See figure 6.**
16. Fit 6mm clip lock trim (supplied) to rear of protection bar. **NOTE:** Trim off lower edge on angle so trim will sit flush with end of protection bar. **See figures 7, 8 and 9.**
17. Attach ECB fog lights to protection bar. Place M6 x 20 bolts, spring washers (supplied) through light mount from inside and attach nut to top. Slide assembly into light mount in Protection bar and centralize light to hole. **See figure 10. TIGHTEN ALL BOLTS FIRM ONLY.** Do not fit fog light trims at this stage.
18. Attach protection bar to outside of steel mounting brackets. Use six ½ x 1 ½ bolts, flat and spring washers and nuts (supplied). **DO NOT TIGHTEN.**
19. Align protection bar with vehicle. **See figures 11 and 12. TIGHTEN ALL BOLTS.** Tighten front bolts through skirt vent. Tighten rear bolt through indicator hole using a long extension.
20. Fit ECB LED indicator / park lights (supplied) into protection bar as per instructions supplied with the LED indicator kit. **NOTE: Ensure park light is to outside. See figure 13. Check operation.**
21. Connect fog lamps. Check operation. Aim with low beam, **TIGHTEN IN POSITION.** Fit fog lamp trims (supplied) to protection bar, large part of trim to inside.

ENSURE NUMBER PLATE IS CLEARLY VISABLE

Note: When fitting/refitting the licence plate to the vehicle, ensure there is no obstruction to licence plate vision in accordance with local authorities. If required relocate licence plate to an alternate location.

Further VFPS Notes:

- a) Do not attach VFPS to the vehicle using anchorages not intended for this purpose (e.g. engine mounting bolts).
- b) Do not use this product for any vehicle make or model, other than those specified by the VFPS manufacturer.
- c) Do not remove the plaque or label from the VFPS.
- d) Do not modify the structure of the VFPS in any way.
- e) No accessory or fitment should project forward of the VFPS forward profile.
- f) **ENSURE THESE INSTRUCTIONS ARE LEFT WITH VEHICLE OWNER AND/OR OPERATOR.**

IMPORTANT INFORMATION

Periodically check bolts and nuts for correct tightness, especially if travelling on rough roads



East Coast Bullbars (ECB Pty Ltd)

Tel: 07 3897 5700

Fax: 07 3283 1168

ecb@ecb.com.au www.ecb.com.au

WORLD'S BEST
ALLOY BULLBARS

29 Snook St
Clontarf QLD 4019
Australia

Po Box 122
Margate QLD 4019
Australia

FITTING KIT

2 – Steel mounting brackets.	1 – Fog light kit.
2 – 30 x 8mm steel washers 10mm hole.	2 – M6 x 20 bolts.
10 – M8 x 1.25 x 35mm bolts.	2 – M6 nuts
10 – M8 flat washers.	2 – M6 flat washers.
10 – M8 spring washers.	2 – M6 spring washers.
6 – ½ x 1 ½ bolts and nuts.	2 – Fog lamp trims.
6 – ½ spring washers.	10 – Cable locks.
12 – ½ flat washers.	1 – 2200mm length 6mm clip lock trim.
1 – ECB LED Indicator / Park light kit	2 - 500mm lengths 3mm clip lock trim.

Four bolts from front

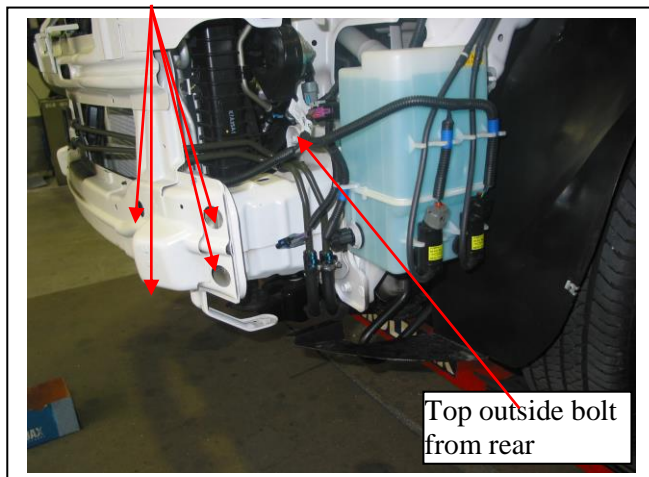


Figure 1 – Passenger side shown

Steel mounting bracket with support panel removed for photo purposes only

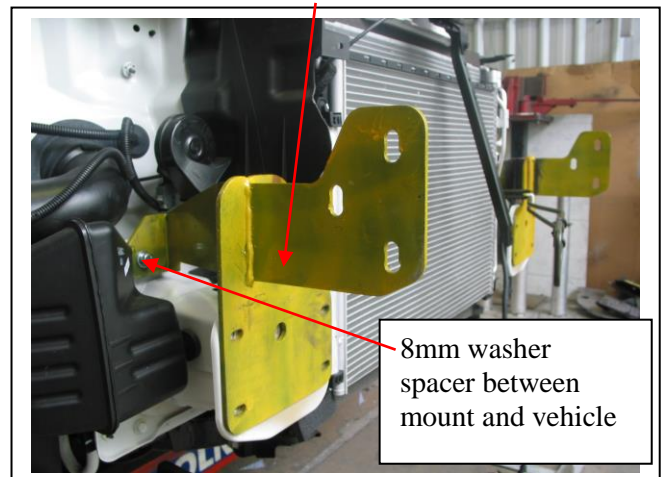


Figure 2 – Driver's side shown

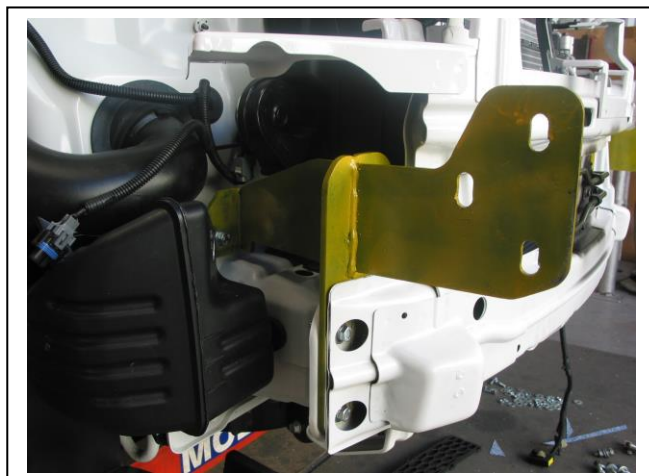


Figure 3 – Driver's side shown



Figure 4 – Bumper with all grilles removed



East Coast Bullbars (ECB Pty Ltd)

Tel: 07 3897 5700

Fax: 07 3283 1168

ecb@ecb.com.au www.ecb.com.au

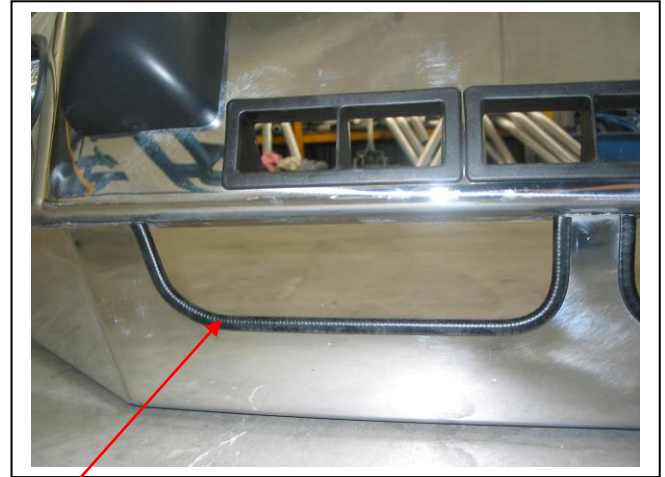
WORLD'S BEST
ALLOY BULLBARS

29 Snook St
Clontarf QLD 4019
Australia

Po Box 122
Margate QLD 4019
Australia

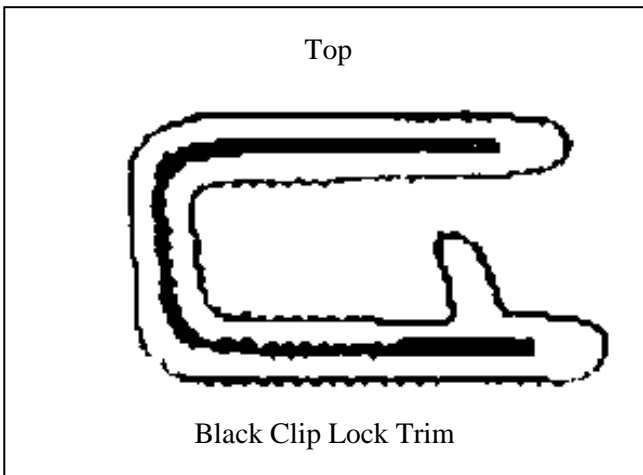


Figure 5



Attach 3mm clip
lock trim

Figure 6



Top

Black Clip Lock Trim

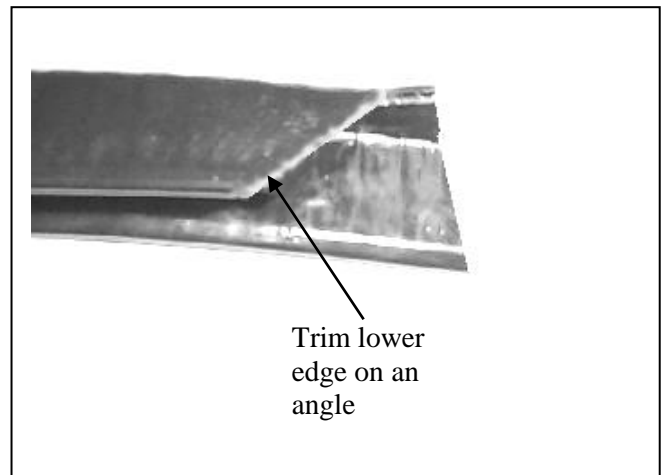
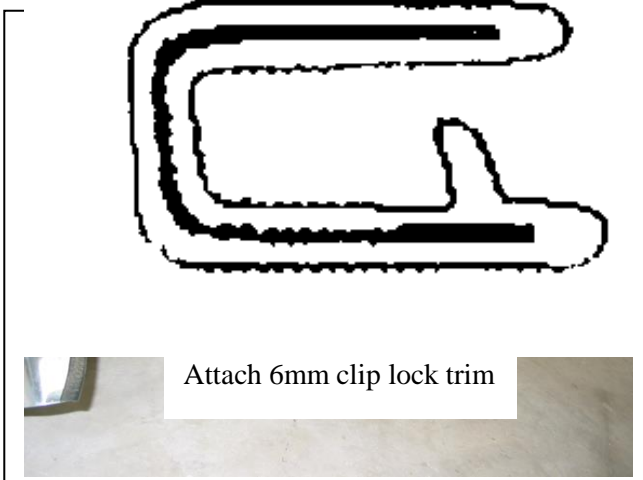
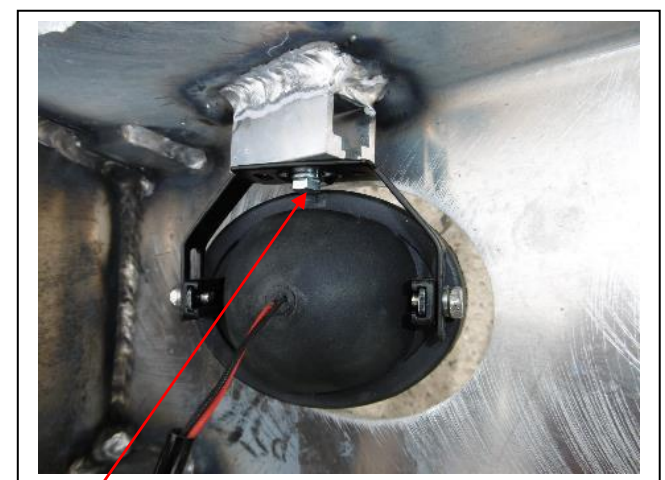


Figure 8



Attach 6mm clip lock trim

Figure 9



M6 bolt

Figure 10



East Coast Bullbars (ECB Pty Ltd)

Tel: 07 3897 5700

Fax: 07 3283 1168

ecb@ecb.com.au www.ecb.com.au

WORLD'S BEST
ALLOY BULLBARS

29 Snook St
Clontarf QLD 4019
Australia

Po Box 122
Margate QLD 4019
Australia



Figure 11 – Front view shown



Figure 12 – side view shown

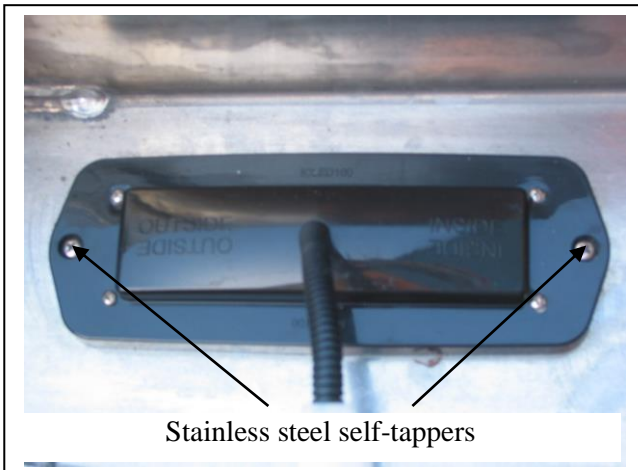


Figure 13



**WORLD'S BEST
ALLOY BULLBARS**

East Coast Bullbars (ECB Pty Ltd)

Tel: 07 3897 5700

Fax: 07 3283 1168

ecb@ecb.com.au www.ecb.com.au

29 Snook St
Clontarf QLD 4019
Australia

Po Box 122
Margate QLD 4019
Australia

We value your comments

Dear Fitter,

ECB would like to know how you went with the installation of this product. We value your comment and may need to contact you to clarify some details so please complete your contact details clearly.

We would appreciate if you could complete as many of the following details as possible.

Your Name:	Your contact No.
Product Part No.	Product Invoice No.
Product Description:	Make, model, and year of vehicle:
Product Work Order No.	Company your from/Company product purchased from:

Date of Fitment: ____/____/____

Was the fitting hardware supplied complete?

Yes

No

If no what was not supplied

Did the installation go well?

Yes

No

Please provide comments

Please draw diagrams if you need to.

Post to

Reply Paid 122

PO Box 122

Margate QLD 4019

Fax to

(07) 3283 1168



WORLD'S BEST
ALLOY BULLBARS

East Coast Bullbars (ECB Pty Ltd)

Tel: 07 3897 5700

Fax: 07 3283 1168

ecb@ecb.com.au www.ecb.com.au

29 Snook St
Clontarf QLD 4019
Australia

Po Box 122
Margate QLD 4019
Australia

DESPATCH CHECKLIST BH32SY

ICZBKCH32



Work Order #	
Finish:	
Transport:	
Due Date:	

- 2 – Steel mounting brackets.
- 1 – Bolt Kit.
- 1 – ECB LED Indicator / Park light kit.
- 1 – Pair ECB fog lights.
- 2 – ECB fog light trims.
- 1 – 2200mm length 6mm clip lock trim.
- 2 – 500mm lengths 3mm clip lock trim.
- 2 – ECB overrides – **Fitted to bar.**
- 3 – 6mm Air Scoops – **Fitted to bar.**

**See other side of
this page for
photos of all
mounts**



Is this product “the best it can be” Yes _____/_____

Wrapper's initials / Checker initials

If **NO** fix before continuing

All parts checked and completed by:

Nut and bolts: _____ Date __/__/__

Order control: _____ Date __/__/__

Final wrap check: _____ Date __/__/__



East Coast Bullbars (ECB Pty Ltd)

Tel: 07 3897 5700

Fax: 07 3283 1168

ecb@ecb.com.au www.ecb.com.au

29 Snook St
Clontarf QLD 4019
Australia

Po Box 122
Margate QLD 4019
Australia

WORLD'S BEST
ALLOY BULLBARS

