



WORLD'S BEST  
ALLOY BULLBARS

East Coast Bullbars (ECB Pty Ltd)

Tel: 07 3897 5700

Fax: 07 3283 1168

ecb@ecb.com.au www.ecb.com.au

29 Snook St  
Clontarf QLD 4019  
Australia

Po Box 122  
Margate QLD 4019  
Australia

**BH24SY**

REPLACES: 22.03.12  
REVISED: 24.01.18

## FITTING INSTRUCTIONS

### HOLDEN CAPTIVA 5 (2-11 on) BIG TUBE BAR (WITH FOG LIGHTS) VEHICLE FRONTAL PROTECTION SYSTEM (VFPS) FOR AIR BAG & ADR COMPLIANT VEHICLES

Check installation hardware before commencing.

**NOTE:** If vehicle does not have original fog lights, an aftermarket wiring harness will need to be installed.

If vehicle does not have original equipment parking sensors, black plugs are supplied to fill holes in front of ECB protection bar.

1. Remove eleven PK plastic clips from radiator support panel trim, remove trim.
2. Remove seven 7mm head screws from inner wheel liner (per side), and three 12mm head bolts from underside of bumper. Unplug fog light / parking sensor (if fitted) harness from top of passenger's side chassis rail. Carefully pull out on rear wing of bumper to unclip top edge of bumper from plastic and remove bumper. **See figure 1.**
3. Remove four 12mm head bolts from end of each crash can. **See figure 2.**
4. Remove headlights from vehicle. Three 10mm head bolts (per side).
5. Remove black plastic air duct (three plastic push / pull clips) from right hand side of headlight.
6. Remove two 12mm head bolts from inside of crash can (per side). **See figure 3.**
7. Fit ECB steel support bracket (supplied) on the inside of each crash can. Slide down inside of crash can between crash can and radiator. Wide end of mount to front of vehicle. Install using two M8 x 30 bolts, flat washers and spring washers (per side) (supplied). **See figure 4. Tighten all bolts.**
8. Pull out lower radiator support and slide ECB steel mounting brackets (supplied) into correct position. Fit using two M8 x 30 bolts, spring washers and flat washers (per side) (supplied) in outer holes. Align mounts centrally to vehicle, ensuring outside measurement of alloy mounts fits inside inner measurement of steel mounts. **Tighten all bolts.**
9. Using ECB steel mounting brackets as a guide, drill 10mm hole into lower radiator support. **Blow filings clear and treat all exposed metal with a rust inhibitor. See figure 5.** Install one 3/8 x 1 1/2 bolt and washer on wire (per side) into lower hole. **Do not install washers and nuts at this time.** Trim wire so it does not rub.
10. Place ECB steel outer mounting bracket with welded spacer tubes (supplied) on outside of radiator support with spacer tubes protruding into bolt holes in front of radiator support. **See figure 6.** Fit using two M8 x 120mm bolt, spring washers, flat washers with 3/8 flat washers (supplied) into captive nuts. Make sure mounts are parallel and vertical. **See figure 7. Tighten all bolts.**
11. Using ECB steel outer mounting bracket as a guide, drill two 10mm holes through radiator support in line with holes in steel upper mount. **See figure 8. Blow filings clear and treat all exposed metal with a rust inhibitor.** Install two 3/8 x 1 1/2 bolts, flat washers, spring washers and nuts (supplied). **Ensure all bolts are tight.**
12. On drivers side of vehicle, ensure oil cooler lines do **not** rub on ECB steel mounting brackets. **See figure 9.** Bend slightly if required. Slide 100mm piece of convoluted tubing (supplied) over oil cooler lines for added protection.



**WORLD'S BEST  
ALLOY BULLBARS**

**East Coast Bullbars (ECB Pty Ltd)**

Tel: 07 3897 5700

Fax: 07 3283 1168

ecb@ecb.com.au www.ecb.com.au

29 Snook St  
Clontarf QLD 4019  
Australia

Po Box 122  
Margate QLD 4019  
Australia

13. Remove lower polystyrene bumper support, lower grille, parking sensors (if fitted), fog lights (if fitted) and wiring harness from rear of plastic bumper.
14. Attach original equipment parking sensor harness to ECB fog light wiring harness
15. If this is a parking sensor model, feed original equipment wiring harness and ECB fog light wiring harness through ECB Protection Bar from passenger's side of vehicle. Fit parking sensors by placing sensor front face (with silicon ring) into hole and gently turning into attachment bracket. **See figure 10.** Fit 150mm zip tie through hole in bracket, diagonally around parking sensor. Tighten gently. **Caution:** Over tightening may damage sensor.
16. Fit ECB LED indicator / park lights into protection bar as per instructions supplied with the LED indicator kit. **NOTE:** Ensure park light is to outside. **See figure 11.**
17. Attach ECB fog light bracket only to protection bar. Place M6 x 20 bolts, spring washers (supplied) through light mount from inside and attach nut to top. Slide assembly into light mount in Protection bar and centralize light to hole. **TIGHTEN FIRM ONLY. See figure 12.** Connect fog lights to ECB fog light wiring harness.
18. Attach ECB fog light harness and parking sensor harness to lower leg of channel using zip ties (supplied).
19. Refit front bumper in the reverse of steps one and two.
20. Attach 6mm clip lock trim (supplied) to top of ECB protection bar. **NOTE:** Trim off lower edge on an angle so trim will sit flush with end of protection bar. **See figures 13, 14 and 15.**
21. Fit ECB protection bar to ECB steel mounting brackets using three 3/8 x 1 1/2 bolts, flat washers, spring washers and nuts. **Finger tighten only.** On fitment, route wiring harness through fog light hole in plastic bumper and connect to the connector on top of passengers crash can.
22. Align ECB protection bar to vehicle. **See figures 16 and 17.** Access top bolts through fog light holes and lower bolts from underside of vehicle. **Tighten all bolts.**
23. Install ECB quick click wiring harnesses (supplied) between disconnected harness and indicator / park lights on vehicle. Feed wiring through fog light holes in plastic bumper. Refit headlights to vehicle. Connect to ECB Indicator / park lights in ECB protection bar.
24. Connect and install fog lights to ECB protection bar. Aim straight to front of vehicle and angle slightly down.
25. Check all lights for correct operation. Should vehicle not have parking sensors, carefully install black plugs (supplied) into sensor holes.

#### **ENSURE NUMBER PLATE IS CLEARLY VISABLE**

**Note:** When fitting/refitting the licence plate to the vehicle, ensure there is no obstruction to licence plate vision in accordance with local authorities. If required relocate licence plate to an alternate location.

#### **Further VFPS Notes:**

- a) Do not attach VFPS to the vehicle using anchorages not intended for this purpose (e.g. engine mounting bolts).
- b) Do not use this product for any vehicle make or model, other than those specified by the VFPS manufacturer.
- c) Do not remove the plaque or label from the VFPS.
- d) Do not modify the structure of the VFPS in any way.
- e) No accessory or fitment should project forward of the VFPS forward profile.
- f) **ENSURE THESE INSTRUCTIONS ARE LEFT WITH VEHICLE OWNER AND/OR OPERATOR.**



East Coast Bullbars (ECB Pty Ltd)

Tel: 07 3897 5700

Fax: 07 3283 1168

ecb@ecb.com.au www.ecb.com.au

29 Snook St  
Clontarf QLD 4019  
Australia

Po Box 122  
Margate QLD 4019  
Australia

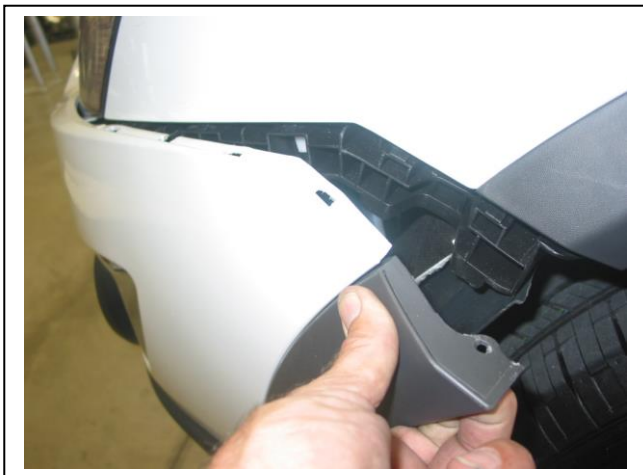
WORLD'S BEST  
ALLOY BULLBARS

**IMPORTANT INFORMATION**

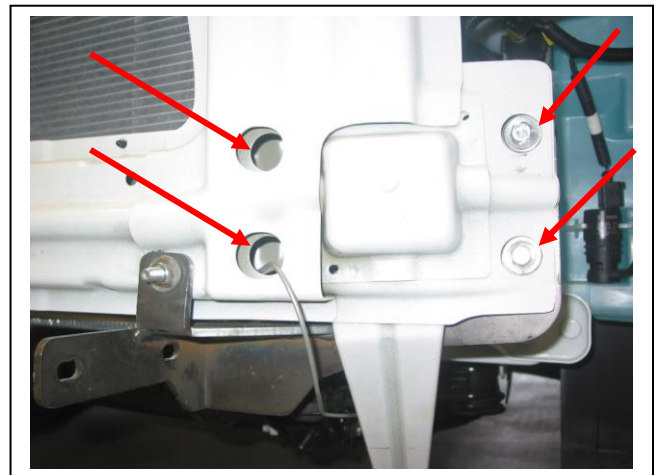
Periodically check bolts and nuts for correct tightness, especially if travelling on rough roads

**FITTING KIT**

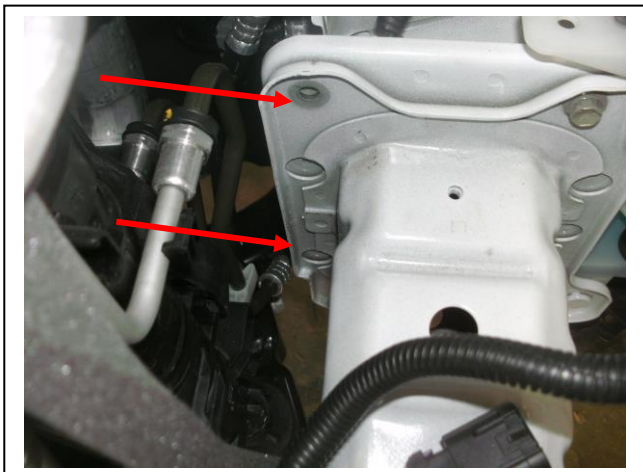
1 – Pair steel support brackets	2 – M6 spring washers
1 – Pair steel mounting brackets	2 – M6 nuts and washers
1 – Pair steel upper mounting brackets	4 – Cable locks
8 – M8 x 30mm bolts	1 – ECB LED Indicator / Park light kit
4 – M8 x 120mm bolts	1 – ECB indi/park wiring harness(IC11CAP5ECB100H)
12 – M8 flat washers	1 – 32 watt ECB fog light kit
12 – M8 spring washers	1 – ECB Parking Sensor / fog light harness
2 – 3/8 x 1 1/2 bolts / washers on 200mm wire	2 – Fog light surrounds
10 – 3/8 x 1 1/2 bolts	14 – 150mm zip ties
18 – 3/8 flat washers	4 – 22mm black plugs.
12 – 3/8 spring washers	1 – 2500mm length 6mm clip lock trim
12 – 3/8 nuts	1 – 100mm length of 16 mm convoluted tubing
2 – M6 x 20 bolts	



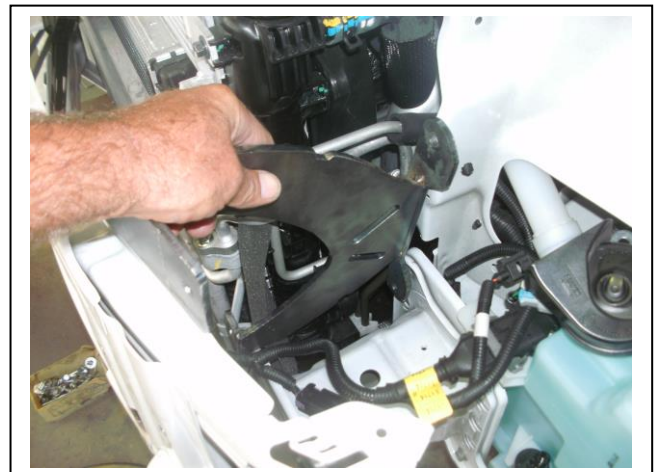
**Figure 1:** Carefully pull out side of bumper, unclipping from guard clips.



**Figure 2:** Remove four bolts (per side) from front of chassis rail.



**Figure 3:** Remove two bolts from crash can to chassis rail.



**Figure 4:** Slide brace mount into position. Passengers side shown.



East Coast Bullbars (ECB Pty Ltd)

Tel: 07 3897 5700

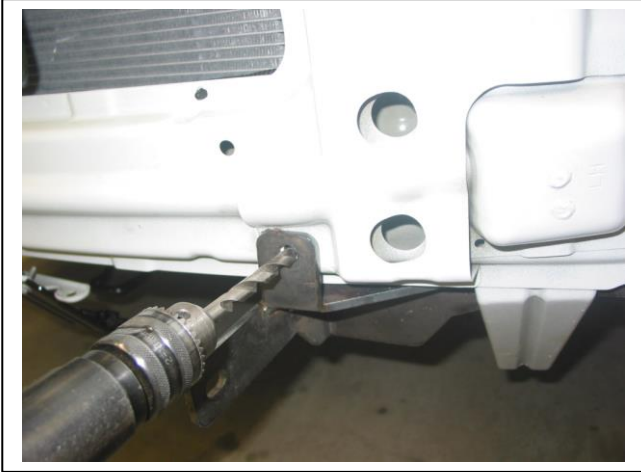
Fax: 07 3283 1168

ecb@ecb.com.au www.ecb.com.au

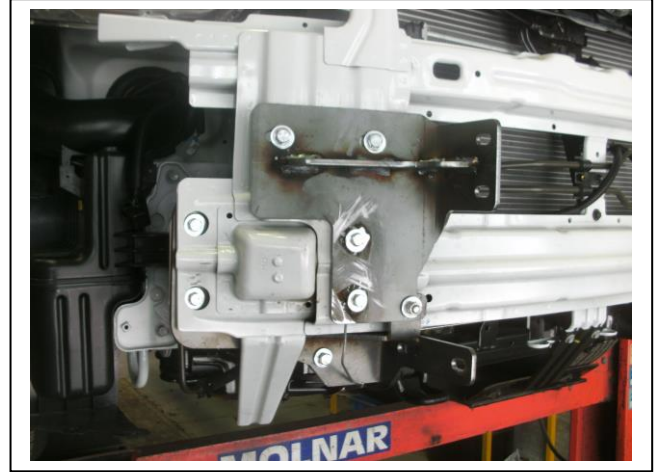
WORLD'S BEST  
ALLOY BULLBARS

29 Snook St  
Clontarf QLD 4019  
Australia

Po Box 122  
Margate QLD 4019  
Australia



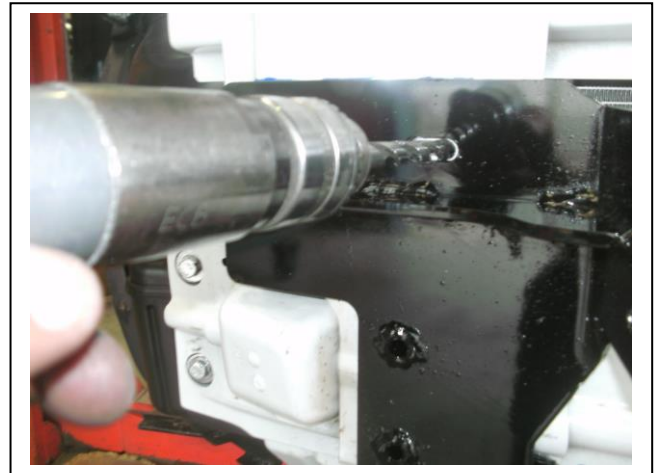
**Figure 5:** Drill hole to 10mm



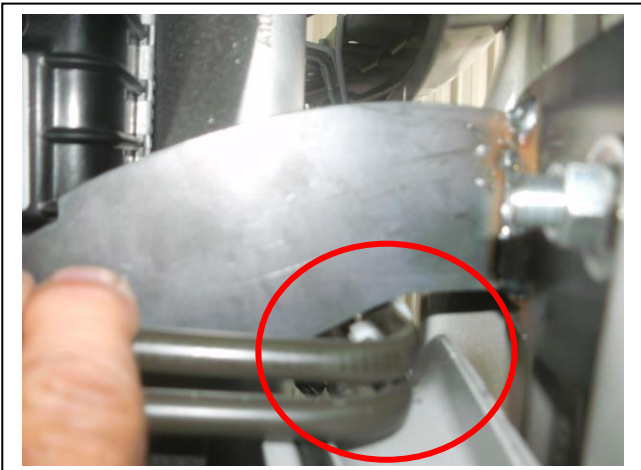
**Figure 6:** ECB steel upper mount fitted in position on vehicle.



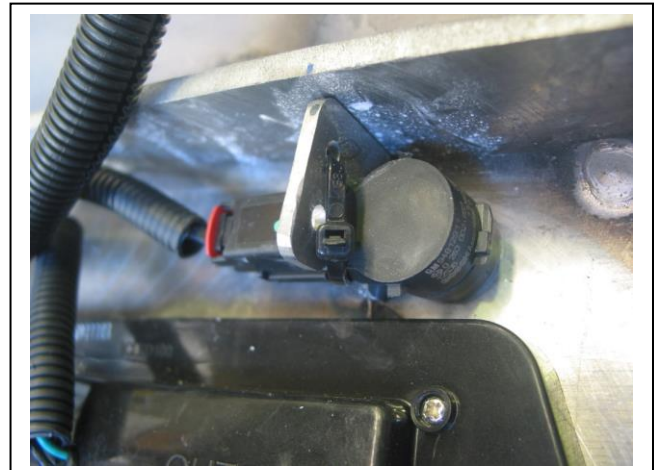
**Figure 7:** Squaring mounts



**Figure 8:** Drill top two holes to 10mm



**Figure 9:** Oil coolers must not rub on ECB steel mounts.



**Figure 10:** Parking sensor fitted. Note zip tie position.



East Coast Bullbars (ECB Pty Ltd)

Tel: 07 3897 5700

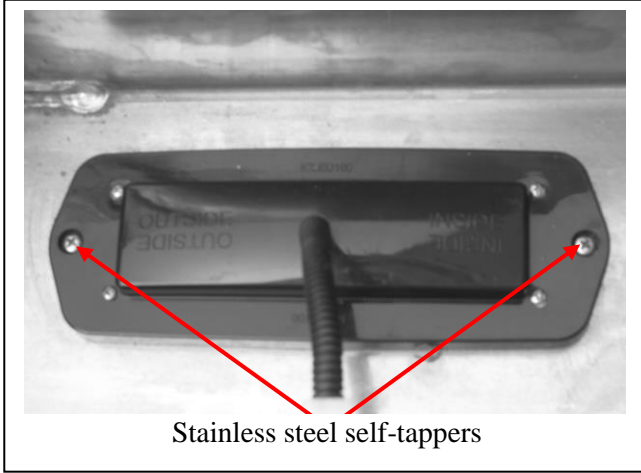
Fax: 07 3283 1168

ecb@ecb.com.au www.ecb.com.au

29 Snook St  
Clontarf QLD 4019  
Australia

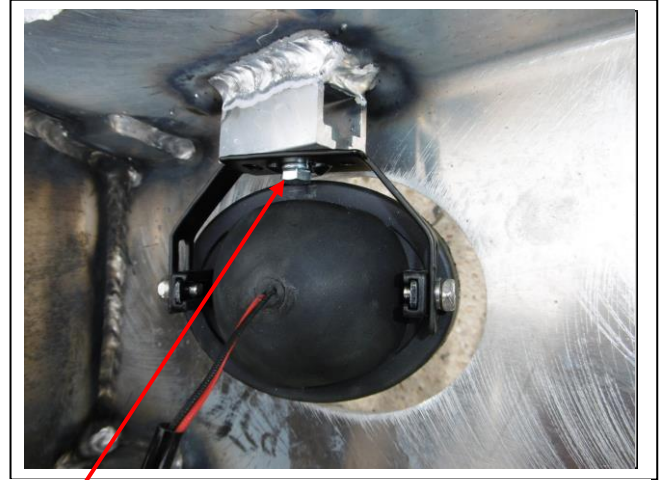
Po Box 122  
Margate QLD 4019  
Australia

WORLD'S BEST  
ALLOY BULLBARS



Stainless steel self-tappers

Figure 11



M6 bolt

Figure 12

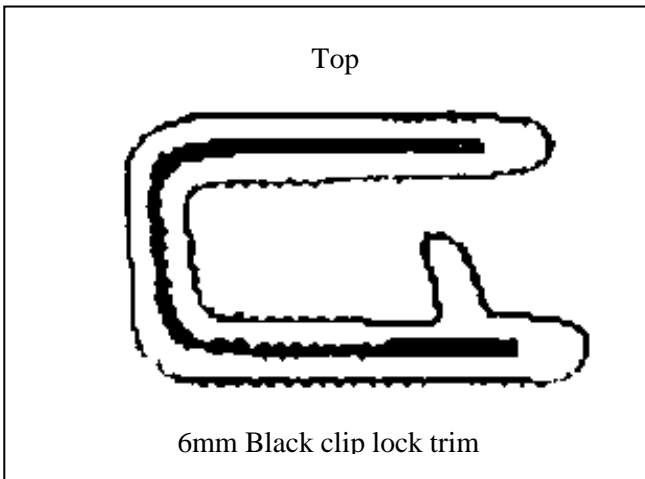
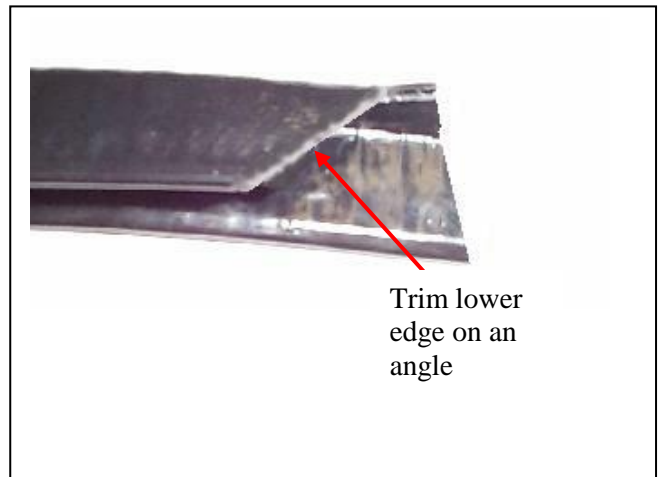
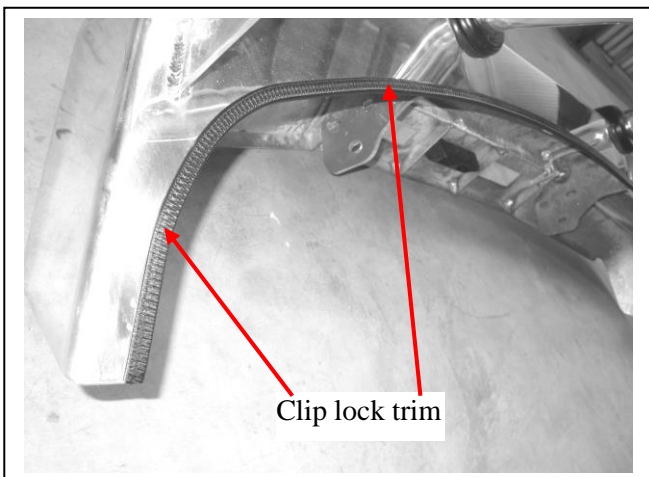


Figure 13



Trim lower edge on an angle

Figure 14



Clip lock trim

Figure 15

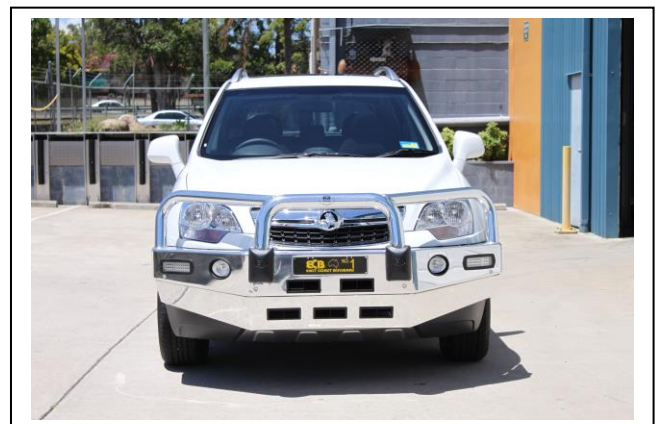


Figure 16: Front view



**WORLD'S BEST  
ALLOY BULLBARS**

**East Coast Bullbars (ECB Pty Ltd)**

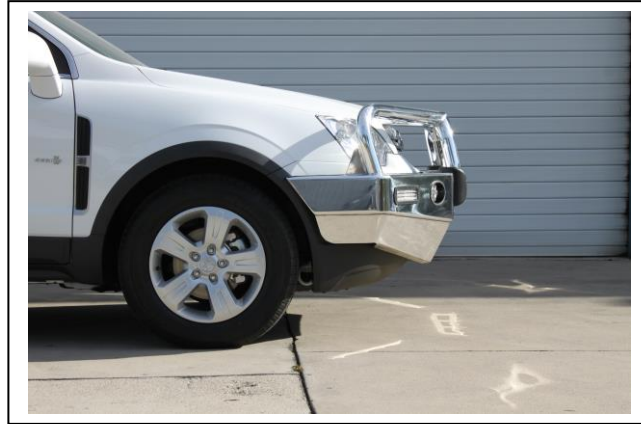
Tel: 07 3897 5700

Fax: 07 3283 1168

ecb@ecb.com.au www.ecb.com.au

29 Snook St  
Clontarf QLD 4019  
Australia

Po Box 122  
Margate QLD 4019  
Australia



**Figure 17: Side view**



**WORLD'S BEST  
ALLOY BULLBARS**

**East Coast Bullbars (ECB Pty Ltd)**

Tel: 07 3897 5700

Fax: 07 3283 1168

ecb@ecb.com.au www.ecb.com.au

29 Snook St  
Clontarf QLD 4019  
Australia

Po Box 122  
Margate QLD 4019  
Australia

## *We value your comments*

Dear Fitter,

ECB would like to know how you went with the installation of this product. We value your comment and may need to contact you to clarify some details so please complete your contact details clearly.

We would appreciate if you could complete as many of the following details as possible.

<b>Your Name:</b>	<b>Your contact No.</b>
<b>Product Part No.</b>	<b>Product Invoice No.</b>
<b>Product Description:</b>	<b>Make, model, and year of vehicle:</b>
<b>Product Work Order No.</b>	<b>Company your from/Company product purchased from:</b>

**Date of Fitment:** \_\_\_\_/\_\_\_\_/\_\_\_\_

Was the fitting hardware supplied complete?

Yes

No

If no what was not supplied

---

---

Did the installation go well?

Yes

No

Please provide comments

---

---

Please draw diagrams if you need to.

**Post to**  
Reply Paid 122

**Fax to**  
(07) 3283 1168



**WORLD'S BEST  
ALLOY BULLBARS**

**East Coast Bullbars (ECB Pty Ltd)**

Tel: 07 3897 5700

Fax: 07 3283 1168

ecb@ecb.com.au [www.ecb.com.au](http://www.ecb.com.au)

29 Snook St  
Clontarf QLD 4019  
Australia

Po Box 122  
Margate QLD 4019  
Australia

PO Box 122  
Margate QLD 4019





**WORLD'S BEST  
ALLOY BULLBARS**

**East Coast Bullbars (ECB Pty Ltd)**

Tel: 07 3897 5700

Fax: 07 3283 1168

ecb@ecb.com.au [www.ecb.com.au](http://www.ecb.com.au)

29 Snook St  
Clontarf QLD 4019  
Australia

Po Box 122  
Margate QLD 4019  
Australia



East Coast Bullbars (ECB Pty Ltd)

Tel: 07 3897 5700

Fax: 07 3283 1168

ecb@ecb.com.au www.ecb.com.au

29 Snook St  
Clontarf QLD 4019  
Australia

Po Box 122  
Margate QLD 4019  
Australia

WORLD'S BEST  
ALLOY BULLBARS

# DESPATCH CHECKLIST BH24SY

ICZBKCH24



Work Order #	
Finish:	
Transport:	
Due Date:	

- 1 – Pair Steel support brackets.
- 1 – Pair Steel upper mount brackets
- 1 – Pair Steel lower mount brackets
- 1 – Bolt Kit
- 1 – LED ECB indicator / park light kit (ICLED100)
- 1 – ECB INDI/PARK wiring harness kit(IC11CAP5ECB100H)
- 1 – 35 watt Fog light kit (IC10035ECB)
- 1 – ECB parking / fog light harness (IC11CAP51004ECBH)
- 2 – Fog light surrounds
- 1 – 2500mm length 6mm clip lock
- 2 – ECB Overrides – **Fitted to Bar**
- 2 – 6mm Air Vents – **Fitted to Bar**
- 3 – 3mm Air Vents – **Fitted to Bar**

**See other side of this page for photos of all mounts**



Is this product “the best it can be” Yes \_\_\_\_\_ / \_\_\_\_\_  
Wrapper's initials / Checker initials

If **NO** fix before continuing

All parts checked and completed by:

Nut and bolts: \_\_\_\_\_ Date \_\_\_/\_\_\_/\_\_\_

Order control: \_\_\_\_\_ Date \_\_\_/\_\_\_/\_\_\_

Final wrap check: \_\_\_\_\_ Date \_\_\_/\_\_\_/\_\_\_



East Coast Bullbars (ECB Pty Ltd)

Tel: 07 3897 5700

Fax: 07 3283 1168

ecb@ecb.com.au www.ecb.com.au

WORLD'S BEST  
ALLOY BULLBARS

29 Snook St  
Clontarf QLD 4019  
Australia

Po Box 122  
Margate QLD 4019  
Australia

