



**WORLD'S BEST
ALLOY BULLBARS**

East Coast Bullbars (ECB Pty Ltd)

Tel: 07 3897 5700

Fax: 07 3283 1168

ecb@ecb.com.au www.ecb.com.au

29 Snook St
Clontarf QLD 4019
Australia

Po Box 122
Margate QLD 4019
Australia

BH20SY

REPLACES: 00.00.00
REVISED: 17.01.18

FITTING INSTRUCTIONS

VE COMMODORE Series 2 SV6, SS AND SSV BIG TUBE™ PROTECTION BAR WITH FOG LIGHTS VEHICLE FRONTAL PROTECTION SYSTEM (VFPS) FOR AIR BAG & ADR COMPLIANT VEHICLES

Check installation hardware before commencing.

1. Remove under bumper skid plate. Six 7mm head bolts and four push pull plastic clips and four 13mm head bolts are located behind the skid plate at the base of the plastic inner guard.
2. Remove two push pull plastic clips (per side) from where inner guard attaches to bumper cover return.
3. Pull inner guard back and remove two 10mm head bolts per side retaining to top of bumper cover return. Disconnect fog lights.
4. Lift bonnet and remove two 10mm head bolts and two push pull clips along top of grille.
5. Remove bumper cover: holding side of bumper cover return outwards, under headlight firmly pull bumper cover away from clips under headlight. Repeat for other side and remove bumper cover. **See figure 1.**
6. Remove plastic bumper cover support from front of alloy cross member. Two 10mm head bolts and two push pull clips.
7. Unbolt windscreen washer bolts from rear of alloy cross member. **NOTE:** A deep socket is best suited for removing the three 10mm head bolts. Use caution near radiator; position a thin piece of metal or cardboard between ratchet and radiator to ensure no damage.
8. Remove alloy cross member from front of chassis. Six 13mm head bolts and two 10mm bolts from underside front of chassis rails.
9. Slide steel mounting brackets (supplied) over alloy cross member and align all holes in steel mounting brackets to centre of holes in alloy cross member. Mark and drill 10mm holes both sides as per **figure 2**. **NOTE:** Holes drilled on underside of cross member, not on top.
10. Attach steel mounting brackets (supplied) to alloy cross member using 3/8 x 2 bolts, 3/8 nut plate on wire, flat and spring washers (supplied). **TIGHTEN BOLTS/NUTS.**
11. Drill 10mm holes in top of alloy cross member using steel mounting brackets as a guide, attach with 3/8 x 1 ¼ bolts and washer on 400mm wire, 3/8 nuts, flat and spring washers (supplied). **See figure 3. TIGHTEN BOLTS.**
12. Drill two 10mm holes through alloy cross member from the back to the front using steel mounting brackets as a guide. Turn alloy cross member over and drill two 25mm holes through front and centre web to allow a 14mm socket to fit through. **NOTE:** You may use a hole-saw or die grinder to achieve a 25mm hole. **See figures 4 and 5.**
13. Fit lower steel mount brackets to under side of chassis. Use 3/8 x 1 ¼ bolts with washer on wire, nuts, flat and spring washers (supplied). Line up straight with lip on chassis and **TIGHTEN BOLTS. See figure 6.**



**WORLD'S BEST
ALLOY BULLBARS**

East Coast Bullbars (ECB Pty Ltd)

Tel: 07 3897 5700

Fax: 07 3283 1168

ecb@ecb.com.au www.ecb.com.au

29 Snook St
Clontarf QLD 4019

Australia

Po Box 122
Margate QLD 4019

Australia

14. Using lower steel mounting bracket as a guide, drill a 10mm hole through rear of bracket. Attach with 3/8 x 1 1/4 bolt with washer on 400mm wire, nuts, flat and spring washers (supplied). **See figure 7. FINGER TIGHTEN ONLY.**
15. Trim plastic air dam using sharp knife, die grinder or similar, to allow fitment of steel mounting brackets. **See figures 8 and 9.**
16. Fit steel mounting brackets and alloy cross member to front of chassis using six M8 x 1.25 x 30mm bolts, flat and spring washers (supplied) and four 3/8 x 1 1/2 bolts, nuts and flat and spring washers (supplied) **LOOSELY TIGHTEN BOLTS AT THIS POINT.**
17. Refit windscreen washer bottle to rear of cross member using original bolts. **NOTE:** Use caution near radiator, position a thin piece of metal or cardboard between ratchet and radiator to ensure no damage.
18. Attach lower steel mounting brackets (supplied) to main steel mounting brackets. Use two 3/8 x 1 1/2 bolts, nuts, flat and spring washers (supplied). **TIGHTEN ALL BOLTS.**
19. **TIGHTEN ALL BOLTS** attaching steel mounting brackets and cross member to front of chassis.
20. Trim plastic bumper cover support approximately 8mm to fit over steel mounting brackets on cross member as per **figure 10.**
21. Refit under body skid plate using original clips prior to refitting bumper cover.
22. Refit plastic bumper cover support to front of cross member using original bolts and clips.
23. Trim rear of air vent section in lower grille assembly to fit over steel mounting brackets. Refer to **figure 11** for details.
24. Remove original equipment fog lights for indicator / park light wiring to feed through.
25. Splice indicator / park light wiring and fog light wiring into original wiring harness using cable locks (supplied). Feed wiring down to come out where fog lights were removed.
26. Refit bumper cover using original bolts and clips. **NOTE:** When reattaching bumper cover return to guard, it is easiest to loosely fit original nuts and bolt to bumper cover before refitting. **See figure 12.** Feed wiring through holes where fog lights were removed.
27. Attach front of under body skid plate to front of bumper using original bolts. Ensure all other clips and bolts are refitted to top of bumper and plastic inner guard.
28. Fit ECB LED indicator / park lights (supplied) into protection bar as per instructions supplied with the LED indicator kit. **NOTE: Ensure park light is to outside. See figure 13.**
29. Attach ECB fog lights to protection bar. Place M6 x 20 bolts, spring washers (supplied) through light mount from inside and attach nut to top. Slide assembly into light mount in Protection bar and centralize light to hole. **TIGHTEN FIRM ONLY. See figure 14.**
30. Fit 6mm clip lock trim (supplied) to rear of protection bar **NOTE:** Trim off end of 6mm trim on an angle so trim will sit flush with end of protection bar. **See figures 15.**
31. Fit 3mm clip lock trim (supplied) to lower air vents in protection bar. **See figure 16.**



**WORLD'S BEST
ALLOY BULLBARS**

East Coast Bullbars (ECB Pty Ltd)

Tel: 07 3897 5700

Fax: 07 3283 1168

ecb@ecb.com.au www.ecb.com.au

29 Snook St
Clontarf QLD 4019
Australia

Po Box 122
Margate QLD 4019
Australia

32. Ensure air vents in protection bar are directing air downwards.
33. Fit protection bar to outside of steel mounting brackets using 3/8 x 1 ¼ bolts, flat and spring washer (supplied) attaching to a 3/8 nut plate (supplied) on the outside of the protection bar.
34. Align protection bar with vehicle. Refer to **figure 17 and 18** for front view and side view. **TIGHTEN ALL BOLTS.**
35. Connect indicator / park light wiring and check for correct operation. Fit fog light trims to Protection bar, large side to inside.

ENSURE NUMBER PLATE IS CLEARLY VISABLE

Note: When fitting/refitting the licence plate to the vehicle, ensure there is no obstruction to licence plate vision in accordance with local authorities. If required relocate licence plate to an alternate location.

Further VFPS Notes:

- a) Do not attach VFPS to the vehicle using anchorages not intended for this purpose (e.g. engine mounting bolts).
- b) Do not use this product for any vehicle make or model, other than those specified by the VFPS manufacturer.
- c) Do not remove the plaque or label from the VFPS.
- d) Do not modify the structure of the VFPS in any way.
- e) No accessory or fitment should project forward of the VFPS forward profile.
- f) **ENSURE THESE INSTRUCTIONS ARE LEFT WITH VEHICLE OWNER AND/OR OPERATOR.**

IMPORTANT INFORMATION

Periodically check bolts and nuts for correct tightness, especially if travelling on rough roads

FITTING KIT

2 – Steel mounting brackets	6 – 8mm flat washers.
2 – Lower steel mounting brackets	6 – 8mm spring washers.
2 – 3/8 x 2 bolts.	2 – M6 x 20 bolts
6 – 3/8 x 1 ¼ bolts with washer on 400mm wire.	2 – M6 flat washers
6 – 3/8 x 1 ½ bolts.	2 – M6 spring washers
6 – 3/8 x 1 ¼ bolts.	2 – M6 nuts
14 – 3/8 nuts	1 – ECB LED Indicator / Park light kit.
2 – 3/8 nut plates.	1 – Pair ECB Fog lights
32 – 3/8 flat washers	2 – Fog light surrounds
20 – 3/8 spring washers	1 – 2100mm length 6mm clip lock trim.
2 – 16 x 25 x 6mm 3/8 nut plate on 400mm wire.	2 – 430mm lengths of 3mm clip lock trim.
6 – M8 x 1.25 x 30 bolts.	10 – Cable locks.



**WORLD'S BEST
ALLOY BULLBARS**

East Coast Bullbars (ECB Pty Ltd)

Tel: 07 3897 5700

Fax: 07 3283 1168

ecb@ecb.com.au www.ecb.com.au

29 Snook St
Clontarf QLD 4019
Australia

Po Box 122
Margate QLD 4019
Australia

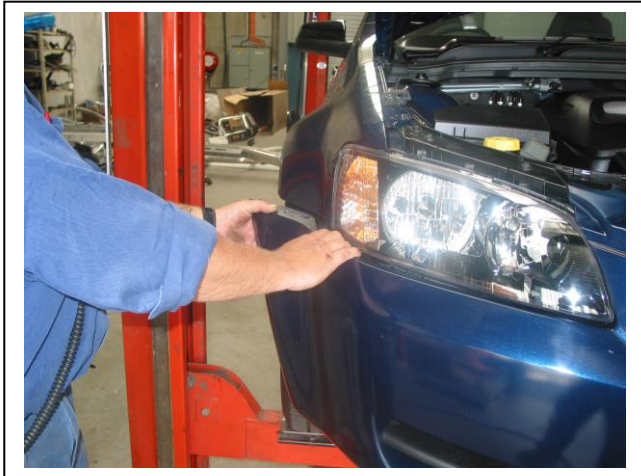


Figure 1



Figure 2

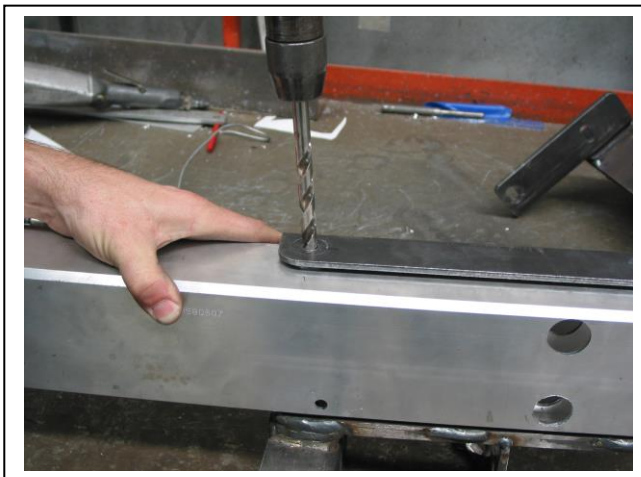


Figure 3

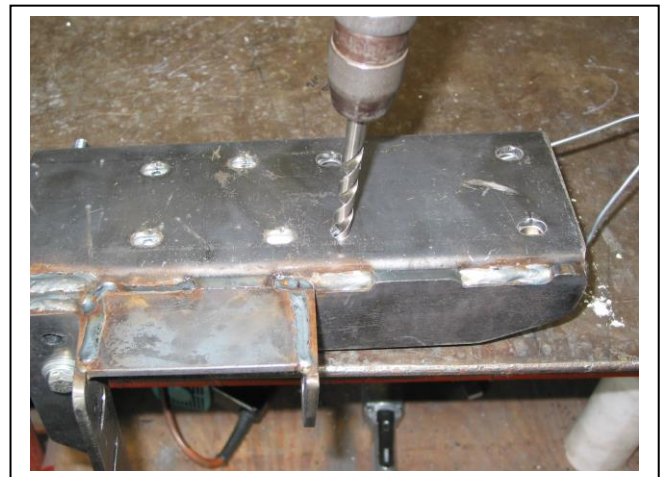


Figure 4

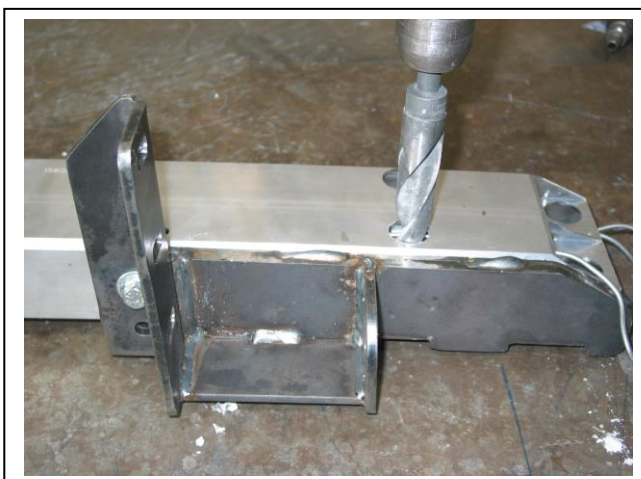


Figure 5



**Figure 6 –Lower Steel Mounting Bracket
Passenger's side shown**

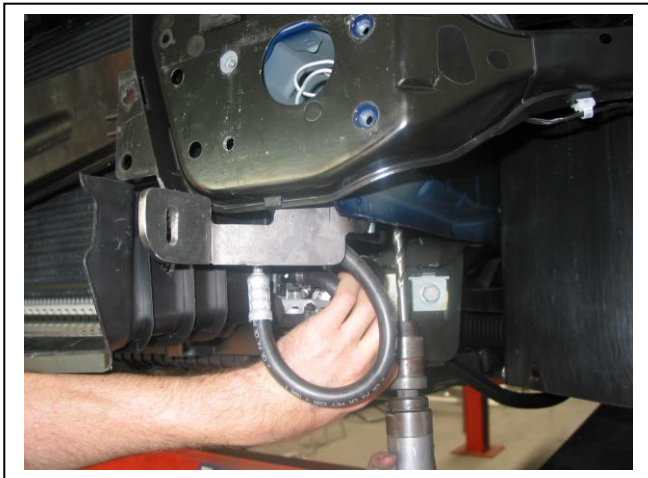


Figure 7 – Passenger's side shown

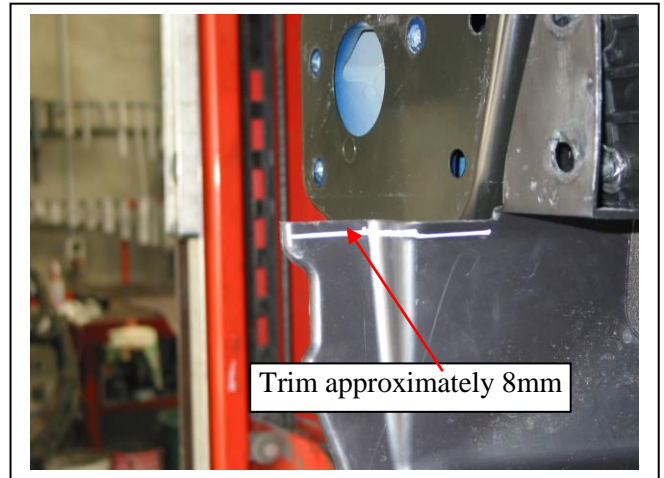


Figure 8 – Driver's side shown

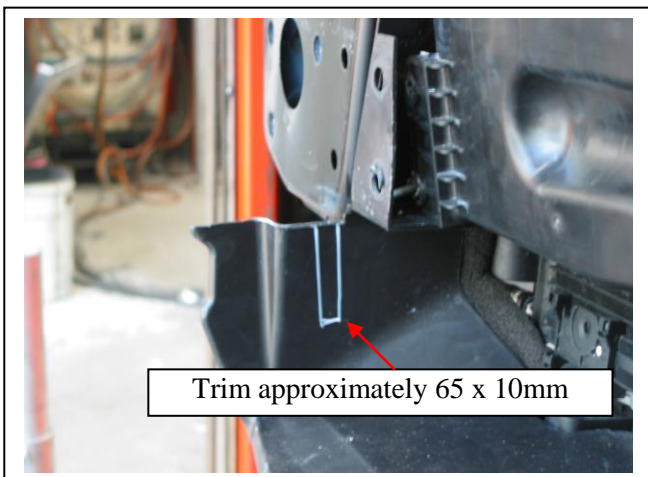


Figure 9 – Driver's side shown

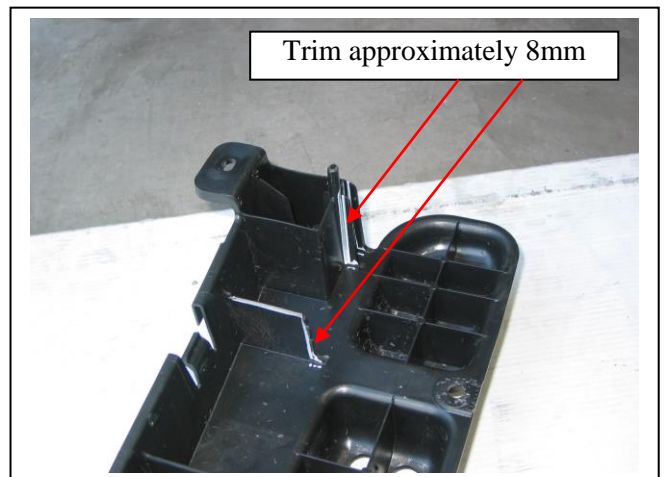


Figure 10 – Passenger side shown.

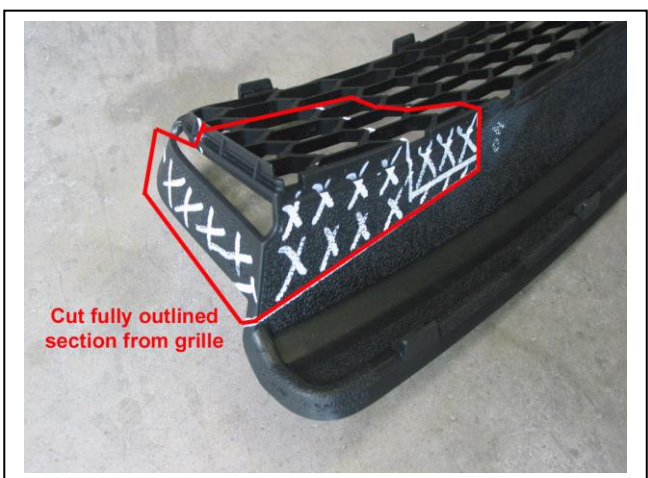


Figure 11 - Grille trim. Use fins in grille as reference for cut distances.



Figure 12 – Passenger side shown. Loosely fit original nuts and bolts to make it easier to refit bumper cover.



East Coast Bullbars (ECB Pty Ltd)

Tel: 07 3897 5700

Fax: 07 3283 1168

ecb@ecb.com.au www.ecb.com.au

WORLD'S BEST
ALLOY BULLBARS

29 Snook St
Clontarf QLD 4019
Australia

Po Box 122
Margate QLD 4019
Australia

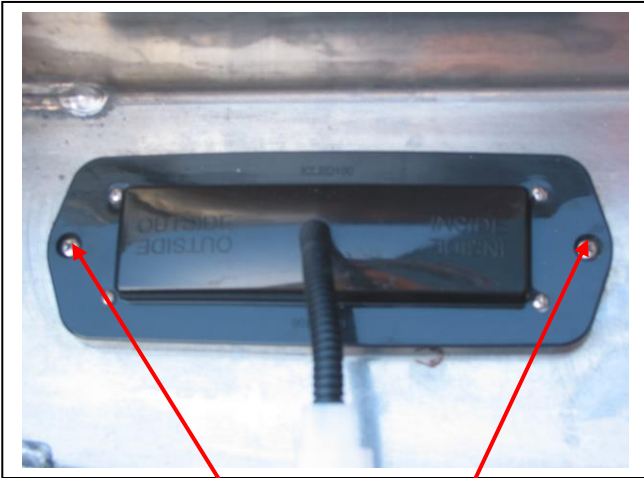
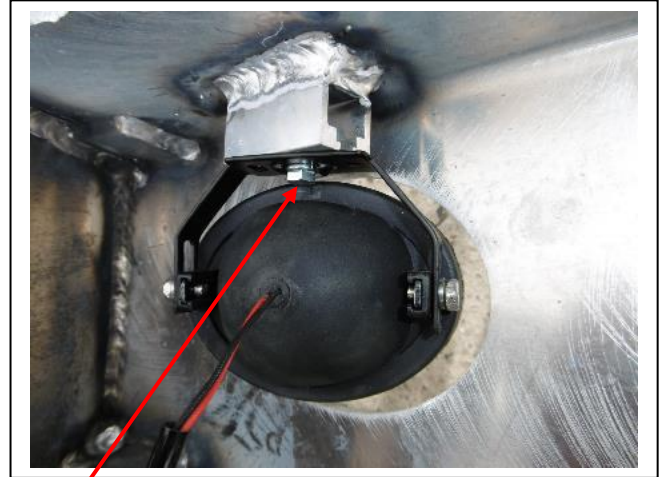


Figure 13
Stainless steel self-tappers



M6 bolt **Figure 14**



Figure 15 – Passenger side shown

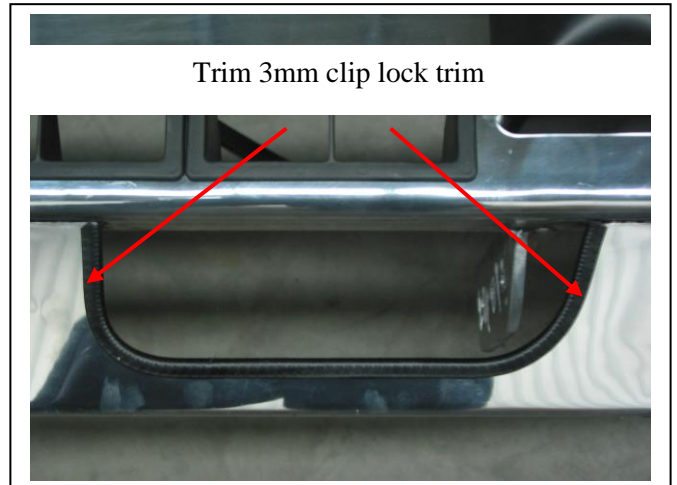


Figure 16 – Passenger side shown.



Figure 17 - Front view.



Figure 18 – Side view.



**WORLD'S BEST
ALLOY BULLBARS**

East Coast Bullbars (ECB Pty Ltd)

Tel: 07 3897 5700

Fax: 07 3283 1168

ecb@ecb.com.au www.ecb.com.au

29 Snook St
Clontarf QLD 4019
Australia

Po Box 122
Margate QLD 4019
Australia



WORLD'S BEST
ALLOY BULLBARS

East Coast Bullbars (ECB Pty Ltd)

Tel: 07 3897 5700

Fax: 07 3283 1168

ecb@ecb.com.au www.ecb.com.au

29 Snook St
Clontarf QLD 4019
Australia

Po Box 122
Margate QLD 4019
Australia

DESPATCH CHECKLIST BH20SY

ICZBKCH20



Work Order #	
Finish:	
Transport:	
Due Date:	

- 1 – Pair steel mounting brackets.
- 1 – Pair lower steel mounting brackets.
- 1 – Bolt Kit
- 1 – ECB LED Indicator / Park lights kit.
- 1 – Pair ECB fog lights.
- 2 – Fog light surrounds.
- 1 – 2100mm length 6mm clip lock.
- 2 – 430mm lengths 3mm clip lock trim.
- 2 – ECB overrides – **Fitted to bar.**
- 3 – 6mm air scoops – **Fitted to bar.**

**See other side of
this page for
photos of all
mounts**



Is this product “the best it can be” Yes _____/_____

Wrapper's initials / Checker initials

If **NO** fix before continuing

All parts checked and completed by:

Nut and bolts: _____ Date __/__/__

Order control: _____ Date __/__/__

Final wrap check: _____ Date __/__/__



**WORLD'S BEST
ALLOY BULLBARS**

East Coast Bullbars (ECB Pty Ltd)

Tel: 07 3897 5700

Fax: 07 3283 1168

ecb@ecb.com.au www.ecb.com.au

29 Snook St
Clontarf QLD 4019
Australia

Po Box 122
Margate QLD 4019
Australia

