



East Coast Bullbars (ECB Pty Ltd)

Tel: 07 3897 5700

Fax: 07 3283 1168

ecb@ecb.com.au www.ecb.com.au

29 Snook St
Clontarf QLD 4019
Australia

Po Box 122
Margate QLD 4019
Australia

BH128SY

REPLACES: 00.00.00

REVISED: 12.01.18

FITTING INSTRUCTIONS

HOLDEN CAPTIVA 1/16 on BIG TUBE BAR WITH FOG LIGHTS & SENSORS VEHICLE FRONTAL PROTECTION SYSTEM (VFPS) FOR AIR BAG & ADR COMPLIANT VEHICLES

Caution: To minimise vibration on vehicle, the ECB mounting system must be fully fitted as per these instructions. Failure to do this will void the warranty and could potentially cause product failure.

Note: Vehicle comes with two styles of outer parking sensor. One is like the centre sensor in fitment. The other type uses a multi part push and clip system (these break easily. Please use care when fitting). Parking sensors fit into Protection bar differently.

Where fog lights are not fitted to vehicle, an aftermarket wiring harness will need to be fitted to vehicle. These are available from ECB, part number (ASLWIRING).

Check installation hardware before commencing.

Special tools:

Air impact driver (wrench) with socket set.

1. Lift bonnet.
2. Remove plastic filler panel between grille and radiator support, nine plastic screw clips.
3. Remove headlights from vehicle, two 10mm head bolts from headlight to radiator support mounts and one 10mm head bolt from lower grille side. Disconnect wiring as removing.
4. To remove bumper cover. Remove two 7mm head screws from front of wheel arch (per side), one 7mm head screw from rear of join in plastic bumper and guard (per side), two 7mm head screws from under side of bumper cover(per side) and three 13mm head bolts from underside centre of plastic bumper. Carefully pull side of plastic bumper out from vehicle to release plastic clips, then pull forward to release clips where headlights are removed. Remove plastic bumper cover.
5. Unclip wiring harness from bonnet lock support. Remove two 10mm head bolts from bumper support to bonnet lock support and one 10mm head bolt from oil cooler pipe. **See figure 1.**
6. Remove air dam from driver side of radiator, three plastic screw clips.
7. Remove four 12mm head bolts from radiator support to crash can (per side).
8. Remove two 12mm head bolts (per side) from inside of crash can to chassis rail. Slide ECB steel crash can support mounting bracket (supplied) between radiator crash can, **See figure 2.** Fit using two M8 x 35 bolts, spring washers and flat washers (supplied) into front of chassis rail. **Tighten all bolts.**
9. Slide ECB steel lower mounting brackets (supplied) between radiator support and crash can with lower mounting bracket hole to inside, matching lower hole in ECB steel crash can support. Fit two outer M8 x 30 bolts, spring washers and flat washers (supplied) into crash can. **Finger tighten only.**



East Coast Bullbars (ECB Pty Ltd)

Tel: 07 3897 5700

Fax: 07 3283 1168

ecb@ecb.com.au www.ecb.com.au

29 Snook St
Clontarf QLD 4019
Australia

Po Box 122
Margate QLD 4019
Australia

10. Fit ECB steel outer mounting bracket (supplied) on outside of radiator support using two M8 x 120mm bolts, spring washers and flat washers (supplied) and one 3/8 x 1 1/4 bolt, flat washer, spring washer and nut (supplied) into lower hole in mount. **See figure 3.** Using top holes in outer mount as a guide, drill to 10mm. **Note: Blow filings clear and treat all exposed metal with a rust inhibitor.** Install two 3/8 x 2 3/4 bolts, flat washers, spring washers and nuts (supplied). **Finger tighten only.**
11. Remove outer 12mm head bolt from crash can to radiator support. Replace bolt with M8 x 35 bolt, flat washers and spring washer (supplied). Tighten M8 x 35mm bolts from crash can to chassis rail. Fit ECB steel chassis rail support mount (supplied) to rear of chassis rail at crash can join using M8 flat washers, spring washers and nuts (supplied). **Tighten in position.** Using mount as a guide, drill two 10mm holes in lower flange of chassis rail. **See figure 4. Note: Blow filings clear and treat all exposed metal with a rust inhibitor.** Fit using two 3/8 x 1 bolts, flat washers, spring washers and nuts (supplied). **TIGHTEN ALL BOLTS.**
12. **Tighten all bolts on mounting system.**
13. Disconnect indicator and parking lights on vehicle. Install ECB quick click wiring harnesses (supplied) between disconnected harness and indicator / park lights on vehicle. Run wiring out from under lights ensuring clearance from sharp edges and moving parts.
14. Splice ECB fog light wiring harness into original equipment wiring harness using cable locks (supplied). Should vehicle not have fog lights fitted, an aftermarket wiring harness will be required for fitment.
15. Remove number plate holder from front of bumper cover. Turn over. Remove top and bottom plastic and polystyrene bumper cushioning and top only of lower grille from inside of plastic bumper cover.
16. Remove parking sensors and wiring from rear of plastic bumper.
17. Install parking sensors into their respective holes in the bar using sensors mounts provided and install wiring loom through the cut outs in the alloy mounts. Using zip ties provided tighten tie the sensor to the mount, holding it in position. **Note: Ensure sensors are held firm but not tight and the face is parallel to the channel. See figure 5.**
18. Remove light trims and fog lights. Refit trims only. This allows for ECB wiring harness to pass through bumper in correct area.
19. Refit bumper to vehicle as per reverse of step 4. Ensure ECB wiring harnesses are fed through fog light holes on each side of bumper. Do not fit radiator support to grille cover at this time. Trim air dam to fit around ECB steel mounting brackets. **See figure 6.**
20. Fit ECB LED indicator / park lights into protection bar as per instructions supplied with the LED indicator kit.
21. Attach ECB fog light bracket only to protection bar. Place M6 x 20 bolts, spring washers (supplied) through light mount from inside and attach nut to top. Slide assembly into light mount in Protection bar and centralize light to hole. **TIGHTEN FIRM ONLY. See figure 8.**
22. Attach 6mm clip lock trim (supplied) to top of ECB protection bar. **NOTE:** Trim off lower edge on an angle so trim will sit flush with end of protection bar. **See figures 9, 10 and 11. Do not fit air vents at this time.**
23. Fit ECB protection bar to ECB steel mounting brackets using six 1/2 x 1 1/2 bolts (per side) (supplied). Front bolts are accessed through fog light holes in bullbar. Rear bolt is accessed by placing impact gun into rear of channel from under vehicle behind bumper, then from front of bar manoeuvre impact gun to bolts to tighten. Tighten until just firm.



East Coast Bullbars (ECB Pty Ltd)

Tel: 07 3897 5700

Fax: 07 3283 1168

ecb@ecb.com.au www.ecb.com.au

WORLD'S BEST
ALLOY BULLBARS

29 Snook St
Clontarf QLD 4019
Australia

Po Box 122
Margate QLD 4019
Australia

24. Align ECB protection bar to vehicle. **See figures 12 and 13. Tighten all bolts.**
25. Fit radiator support to bumper cover trim using original plastic screw clips.
26. Fit fog lights to fog light brackets. Install air vents to centre of bar. Gently tap air vents into bar using rubber mallet to ensure vents are correctly seated.
27. Connect and check fog lights and indicator lights and parking sensors for correct operation.

ENSURE NUMBER PLATE IS CLEARLY VISABLE

Note: When fitting/refitting the licence plate to the vehicle, ensure there is no obstruction to licence plate vision in accordance with local authorities. If required relocate licence plate to an alternate location.

Further VFPS Notes:

- a) Do not attach VFPS to the vehicle using anchorages not intended for this purpose (e.g. engine mounting bolts).
- b) Do not use this product for any vehicle make or model, other than those specified by the VFPS manufacturer.
- c) Do not remove the plaque or label from the VFPS.
- d) Do not modify the structure of the VFPS in any way.
- e) No accessory or fitment should project forward of the VFPS forward profile.
- f) **ENSURE THESE INSTRUCTIONS ARE LEFT WITH VEHICLE OWNER AND/OR OPERATOR.**

IMPORTANT INFORMATION

Periodically check bolts and nuts for correct tightness, especially if travelling on rough roads

FITTING KIT

1 – Pair ECB steel chassis rail supports	18 – M8 flat washers
1 – Pair ECB steel crash can support mounts	18 – M8 spring washers
1 – Pair ECB steel outer mounting brackets	4 – M8 nuts
2 – ECB steel lower mounting brackets	6 – M6 x 20 bolts
4 – Alloy Sensor mounts	6 – M6 x 1.0 nuts
6 – ½ x 1 ½ bolts	12 – M6 flat washers
12 – ½ flat washers	6 – M6 spring washers
6 – ½ spring washers	2 – M6 nuts
6 – ½ nuts	4 – 22mm black plugs (ICINSERT22)
2 – 3/8 x 1 ¼ bolts	10 – 300mm zip ties
4 – 3/8 x 2 ¾ bolts	1 – ECB LED Indicator / Park light kit
4 – 3/8 x 1 bolts	1 – Quick Click Indicator / Park light harness (IC16HCA7IPDH)
20 – 3/8 flat washers	1 – ECB fog light kit
10 – 3/8 spring washers	1 – 2400mm length, 6mm clip lock trim
10 – 3/8 nuts	2 – Fog light trims
6 – M8 x 35 bolts	4 – Cable locks
4 – M8 x 30 bolts	7 – 6mm air vents (include in fitting kit)
4 – M8 x 120 bolts	



East Coast Bullbars (ECB Pty Ltd)

Tel: 07 3897 5700

Fax: 07 3283 1168

ecb@ecb.com.au www.ecb.com.au

WORLD'S BEST
ALLOY BULLBARS

29 Snook St
Clontarf QLD 4019
Australia

Po Box 122
Margate QLD 4019
Australia



Figure 1: Vehicle with bumper removed



Figure 2: Slide ECB crash can support between chassis mounting and radiator support.

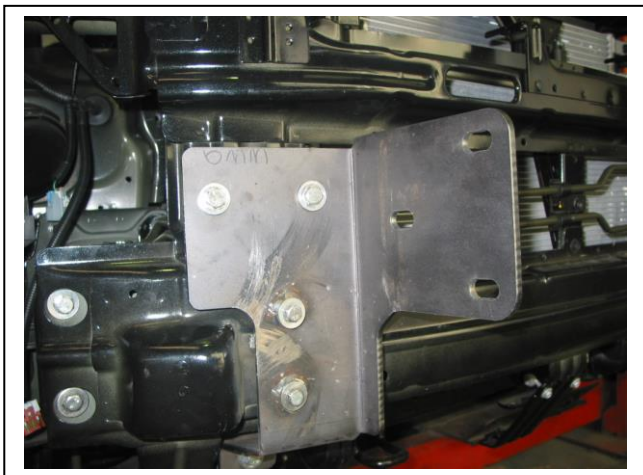


Figure 3: Outer mounting bracket fitted to front of radiator support

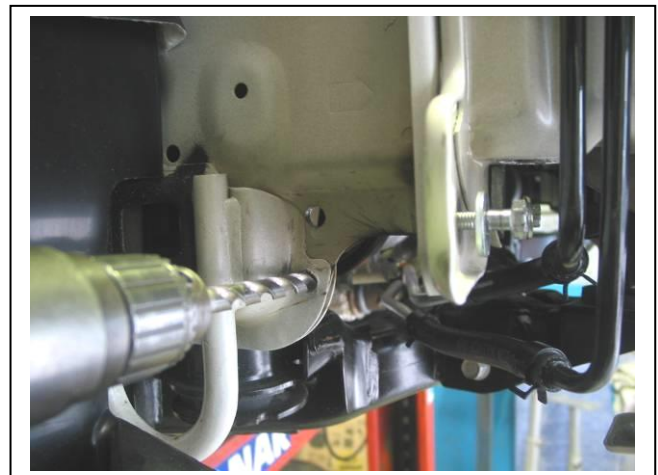


Figure 4: Drill rear chassis rail plate holes to 10mm.



Figure 5: Sensor harness in bar



Figure 6: Bottom corner of driver side air dam. Trim along white line.



East Coast Bullbars (ECB Pty Ltd)

Tel: 07 3897 5700

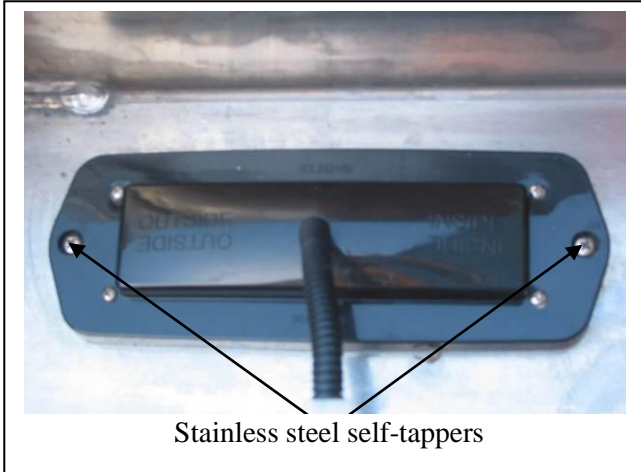
Fax: 07 3283 1168

ecb@ecb.com.au www.ecb.com.au

WORLD'S BEST
ALLOY BULLBARS

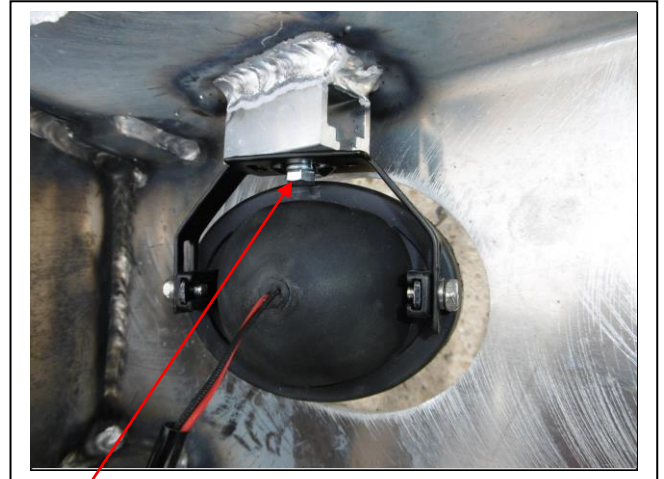
29 Snook St
Clontarf QLD 4019
Australia

Po Box 122
Margate QLD 4019
Australia



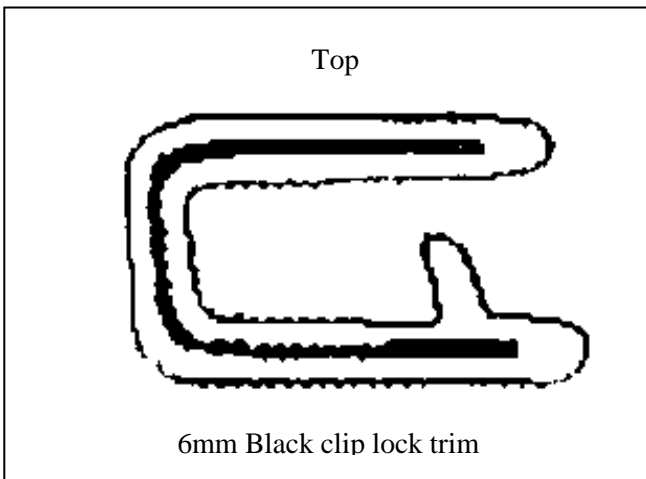
Stainless steel self-tappers

Figure 7



M6 bolt

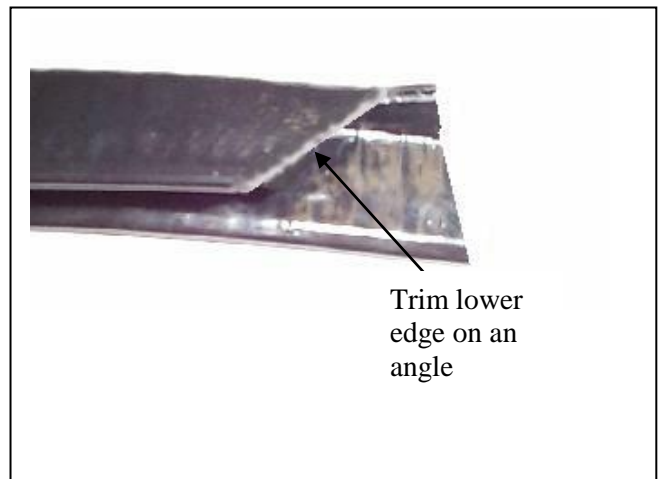
Figure 8



Top

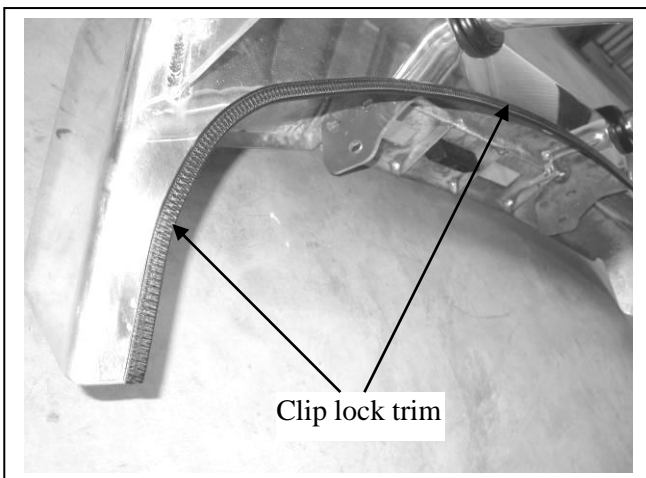
6mm Black clip lock trim

Figure 9



Trim lower edge on an angle

Figure 10



Clip lock trim

Figure 11

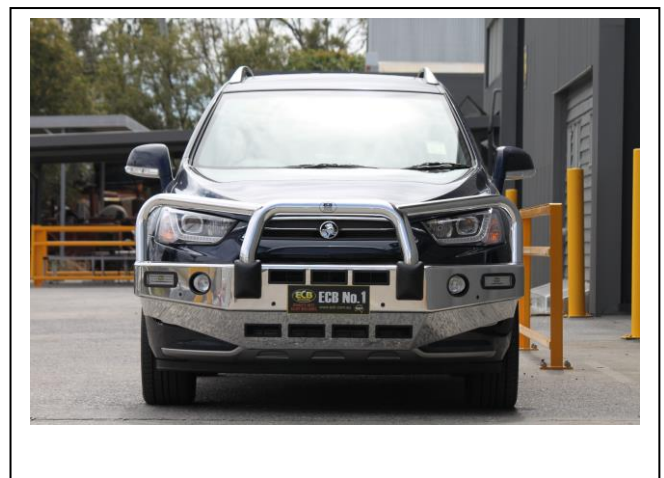


Figure 12: Front view



**WORLD'S BEST
ALLOY BULLBARS**

East Coast Bullbars (ECB Pty Ltd)

Tel: 07 3897 5700

Fax: 07 3283 1168

ecb@ecb.com.au www.ecb.com.au

29 Snook St
Clontarf QLD 4019
Australia

Po Box 122
Margate QLD 4019
Australia



Figure 13: Side view



**WORLD'S BEST
ALLOY BULLBARS**

East Coast Bullbars (ECB Pty Ltd)

Tel: 07 3897 5700

Fax: 07 3283 1168

ecb@ecb.com.au www.ecb.com.au

29 Snook St
Clontarf QLD 4019
Australia

Po Box 122
Margate QLD 4019
Australia

We value your comments

Dear Fitter,

ECB would like to know how you went with the installation of this product. We value your comment and may need to contact you to clarify some details so please complete your contact details clearly.

We would appreciate if you could complete as many of the following details as possible.

Your Name:	Your contact No.
Product Part No.	Product Invoice No.
Product Description:	Make, model, and year of vehicle:
Product Work Order No.	Company your from/Company product purchased from:

Date of Fitment: ____/____/____

Was the fitting hardware supplied complete?

Yes

No

If no what was not supplied

Did the installation go well?

Yes

No

Please provide comments

Please draw diagrams if you need to.

Post to
Reply Paid 122
PO Box 122
Margate QLD 4019

Fax to
(07) 3283 1168



WORLD'S BEST
ALLOY BULLBARS

East Coast Bullbars (ECB Pty Ltd)

Tel: 07 3897 5700

Fax: 07 3283 1168

ecb@ecb.com.au www.ecb.com.au

29 Snook St
Clontarf QLD 4019
Australia

Po Box 122
Margate QLD 4019
Australia

DESPATCH CHECKLIST BH128SY

Work Order #		See other side off this page for photos of all mounts
Finish:		
Transport:		
Due Date:		

- OC.....1 – Pair Steel outer mounting brackets.
- OC.....1 – Pair steel crash can support mounts
- OC.....1 – Pair steel chassis support mounts
- OC.....4 – Alloy Sensor mounts
- OC.....2 – Lower mounting brackets
- BK.....1 – Bolt Kit.
- BK.....1 – LED ECB indicator / park light kit.
- BK.....1 – Quick Click indi / park kit (IC16HCA7IPDH)
- BK.....1 – Fog light kit
- BK.....1 – 2400mm length 6mm clip lock
- OC.....7 – 6mm Air Vents – **in fitting kit (not fitted to bar)**
- OC.....2 – ECB Overrides – **Fitted to Bar**



Is this product “the best it can be” Yes _____/_____

Wrapper's initials / Checker initials

If **NO** fix before continuing

All parts checked and completed by:

Nut and bolts: _____ Date __/__/__

Order control: _____ Date __/__/__

Final wrap check: _____ Date __/__/__



East Coast Bullbars (ECB Pty Ltd)

Tel: 07 3897 5700

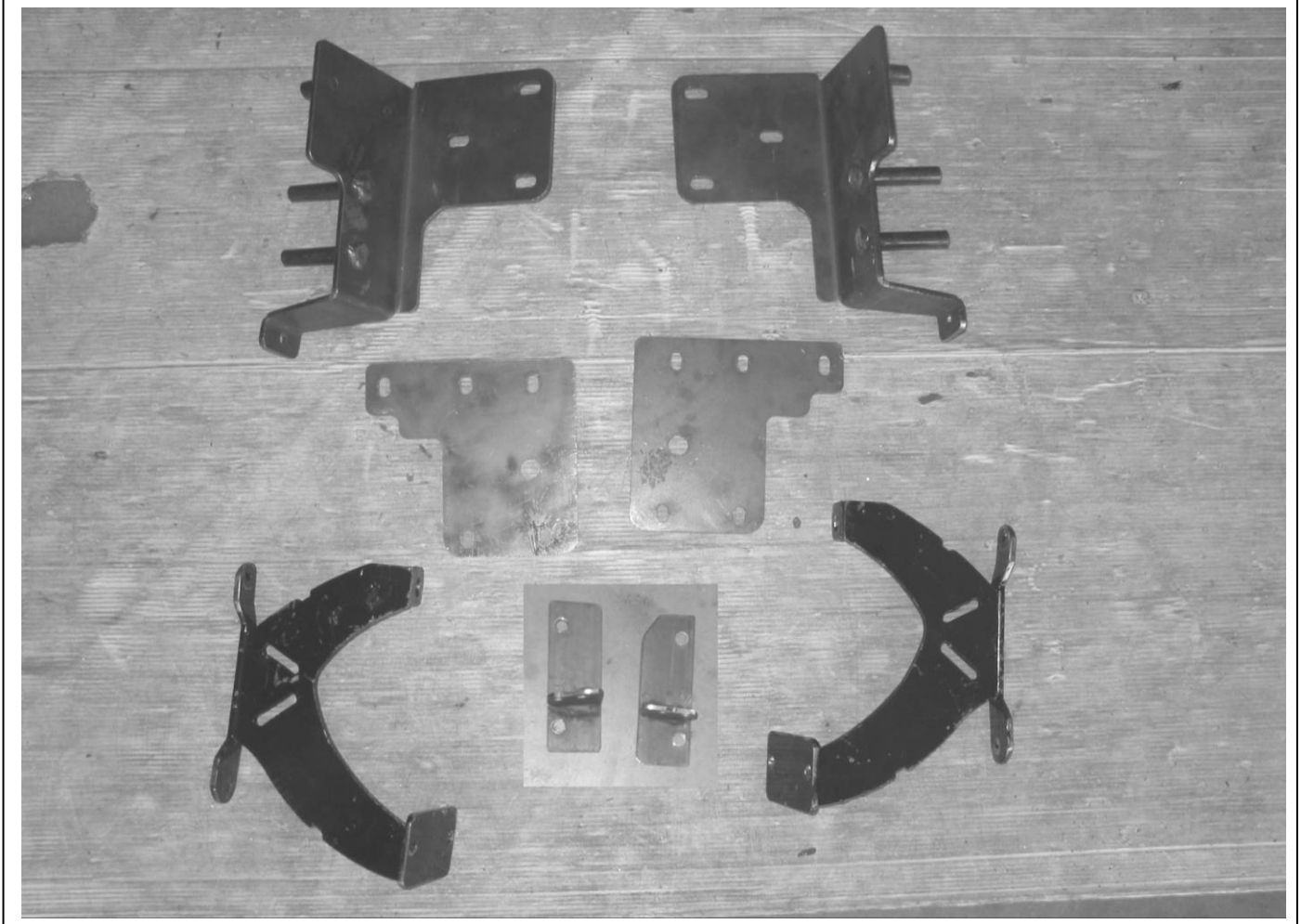
Fax: 07 3283 1168

ecb@ecb.com.au www.ecb.com.au

WORLD'S BEST
ALLOY BULLBARS

29 Snook St
Clontarf QLD 4019
Australia

Po Box 122
Margate QLD 4019
Australia



_____/_____
Wrapper's initials / Checker initials