



WORLD'S BEST
ALLOY BULLBARS

East Coast Bullbars (ECB Pty Ltd)

Tel: 07 3897 5700

Fax: 07 3283 1168

ecb@ecb.com.au www.ecb.com.au

29 Snook St
Clontarf QLD 4019
Australia

Po Box 122
Margate QLD 4019
Australia

BH127SY

REPLACES: 16.04.12

REVISED: 06.05.14

FITTING INSTRUCTIONS

HOLDEN CAPTIVA 7 SERIES 2 3/11 on BIG TUBE BAR VEHICLE FRONTAL PROTECTION SYSTEM (VFPS) FOR AIR BAG & ADR COMPLIANT VEHICLES

Caution: To minimise vibration on vehicle, the ECB mounting system must be fully fitted as per these instructions. Failure to do this will void the warranty and could potentially cause product failure.

Check installation hardware before commencing.

Special tools:

Air impact driver (wrench) with socket set.

1. Lift bonnet.
2. Remove plastic filler panel between grille and radiator support, nine plastic screw clips.
3. Remove headlights from vehicle, two 10mm head bolts from headlight to radiator support mounts and one 10mm head bolt from lower grille side. Disconnect as removing.
4. To remove bumper cover. Remove two 7mm head screws from front of wheel arch(per side), one 7mm head screw from rear of join in plastic bumper and guard (per side), two 7mm head screws from under side of bumper cover(per side) and three 13mm head bolts from underside centre of plastic bumper. Carefully pull side of plastic bumper out from vehicle to release plastic clips, then pull forward to release clips where headlights are removed. Remove plastic bumper cover. Disconnect fog lights if fitted.
5. Unclip wiring harness from bonnet lock support. Remove two 10mm head bolts from bumper support to bonnet lock support and one 10mm head bolt from oil cooler pipe. **See figure 1.**
6. Remove air dam from drivers side of radiator, three plastic screw clips.
7. Remove four 12mm head bolts from radiator support to crash can (per side).
8. Remove two 12mm head bolts (per side) from inside of crash can to chassis rail. Slide ECB steel crash can support mounting bracket (supplied) between radiator and crash can , **See figure 2.** Fit using two M8 x 35 bolts, spring washers and flat washers (supplied) into front of chassis rail. **Tighten all bolts.**
9. Slide ECB lower steel mounting bracket (supplied) between radiator support and crash can with lower mount hole to inside, matching lower hole in ECB steel crash can support. Fit two outer M8 x 30 bolts, spring washers and flat washers into crash can (supplied). **Finger tighten only.**
10. Fit ECB steel outer mounting bracket (supplied) on outside of radiator support using two M8 x 120mm bolts, spring washers and flat washers (supplied) and one 3/8 x 1 1/4 bolt, flat washer, spring washer and nut (supplied) into lower hole in mount. **See figure 3.** Using top holes in outer mount as a guide, drill to 10mm. **Note: Blow filings clear and treat all exposed metal with a rust inhibitor.** Install two 3/8 x 2 3/4 bolts, flat washers, spring washers and nuts (supplied). **Finger tighten only.**



**WORLD'S BEST
ALLOY BULLBARS**

East Coast Bullbars (ECB Pty Ltd)

Tel: 07 3897 5700

Fax: 07 3283 1168

ecb@ecb.com.au www.ecb.com.au

29 Snook St
Clontarf QLD 4019
Australia

Po Box 122
Margate QLD 4019
Australia

11. Remove outer 12mm head bolt from crash can to radiator support. Replace bolt with M8 x 35 bolt, flat washers and spring washer (supplied). Tighten M8 x 35mm bolts from crash can to chassis rail. Fit ECB chassis rail support mount (supplied) to rear of chassis rail at crash can join using M8 flat washers, spring washers and nuts (supplied). Tighten in position. Using mount as a guide, drill two 10mm holes in lower flange of chassis rail. **See figure 4. Note: Blow filings clear and treat all exposed metal with a rust inhibitor.** Fit using two 3/8 x 1 bolts, flat washers, spring washers and nuts (supplied). **TIGHTEN ALL BOLTS.**
12. **Tighten all bolts on mounting system.**
13. Splice Disconnect indicator and parking lights on vehicle. Install ECB quick click wiring harnesses (supplied) between disconnected harness and indicator / park lights on vehicle. Run wiring out from under lights ensuring clearance from sharp edges and moving parts.
14. Remove number plate holder from front of bumper cover. Turn over. Remove top and bottom plastic and polystyrene bumper cushioning and top only of lower grille from inside of plastic bumper cover. Trim grille to fit between ECB steel mounting system.
15. Remove light trims and fog lights. Refit trims only. This allows for ECB wiring harness to pass through bumper in correct area.
16. Refit bumper to vehicle as per reverse of step 4. Ensure ECB wiring harnesses are fed through fog light holes on each side of bumper. Do not fit radiator support to grille cover at this time. Trim air dam to fit around ECB steel mounts. **See figure 5.**
17. Fit ECB LED indicator / park lights into protection bar as per instructions supplied with the LED indicator kit. **NOTE: Ensure park light is to outside. See figure 6.**
18. Attach 6mm clip lock trim (supplied) to top of ECB protection bar. **NOTE: Trim off lower edge on an angle so trim will sit flush with end of protection bar. See figures 8, 9 and 10. Do not fit air vents at this time.**
19. Fit ECB protection bar to ECB steel mounting brackets using six 1/2 x 1 1/2 bolts (per side) (supplied). Front bolts are accessed through fog light holes in bullbar. Rear bolt is accessed by placing impact gun into rear of channel from under vehicle behind bumper, then from front of bar manoeuvre impact gun to bolts to tighten. **Finger tighten only.**
20. Align ECB protection bar to vehicle. **See figures 11 and 12. Tighten all bolts.**
21. Slide lower bumper grille from top between bumper cover and radiator support into position behind bumper cover. Refit to bumper cover by pulling on grille and pushing on bumper cover to clip into position. **See figure 13**
22. Fit radiator support to bumper cover trim using original plastic screw clips.
23. Connect and check indicator lights for correct operation.

ENSURE NUMBER PLATE IS CLEARLY VISABLE

Note: When fitting/refitting the licence plate to the vehicle, ensure there is no obstruction to licence plate vision in accordance with local authorities. If required relocate licence plate to an alternate location.



East Coast Bullbars (ECB Pty Ltd)

Tel: 07 3897 5700

Fax: 07 3283 1168

ecb@ecb.com.au www.ecb.com.au

WORLD'S BEST
ALLOY BULLBARS

29 Snook St
Clontarf QLD 4019
Australia

Po Box 122
Margate QLD 4019
Australia

Further VFPS Notes:

- a) Do not attach VFPS to the vehicle using anchorages not intended for this purpose (e.g. engine mounting bolts).
- b) Do not use this product for any vehicle make or model, other than those specified by the VFPS manufacturer.
- c) Do not remove the plaque or label from the VFPS.
- d) Do not modify the structure of the VFPS in any way.
- e) No accessory or fitment should project forward of the VFPS forward profile.
- f) **ENSURE THESE INSTRUCTIONS ARE LEFT WITH VEHICLE OWNER AND/OR OPERATOR.**

IMPORTANT INFORMATION

Periodically check bolts and nuts for correct tightness, especially if travelling on rough roads

FITTING KIT

1 – Pair ECB steel chassis rail supports	10 – 3/8 nuts
1 – Pair ECB steel crash can support mounts	6 – M8 x 35 bolts
1 – Pair ECB steel outer mounting brackets	4 – M8 x 30 bolts
2 – ECB lower steel mounting brackets	4 – M8 x 120 bolts
6 – ½ x 1 ½ bolts	18 – M8 flat washers
12 – ½ flat washers	18 – M8 spring washers
6 – ½ spring washers	4 – M8 nuts
6 – ½ nuts	1 – ECB LED Indicator / Park light kit
2 – 3/8 x 1 ¼ bolts	1 – Quick Click Indicator / Park light harness (IC11CAP5ECB100H)
4 – 3/8 x 2 ¾ bolts	1 – 2400mm length, 6mm clip lock trim
4 – 3/8 x 1 bolts	2 – 600mm length, 6mm clip lock trim
20 – 3/8 flat washers	4 – 6mm air vents (include in fitting kit)
10 – 3/8 spring washers	



Figure 1: Vehicle with bumper removed

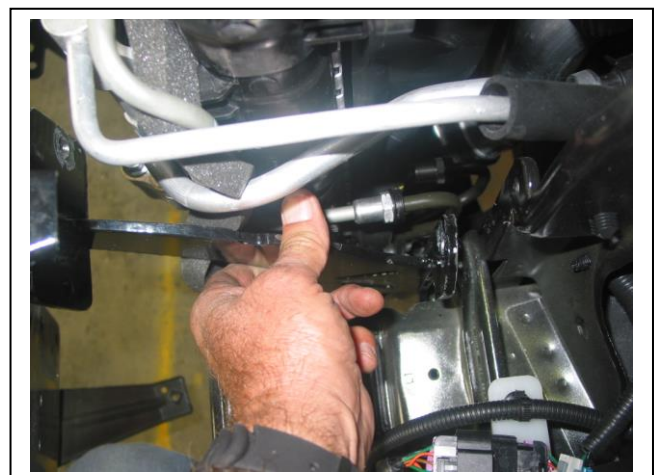


Figure 2: Slide ECB crash can support between chassis mounting and radiator support.



East Coast Bullbars (ECB Pty Ltd)

Tel: 07 3897 5700

Fax: 07 3283 1168

ecb@ecb.com.au www.ecb.com.au

WORLD'S BEST
ALLOY BULLBARS

29 Snook St
Clontarf QLD 4019
Australia

Po Box 122
Margate QLD 4019
Australia

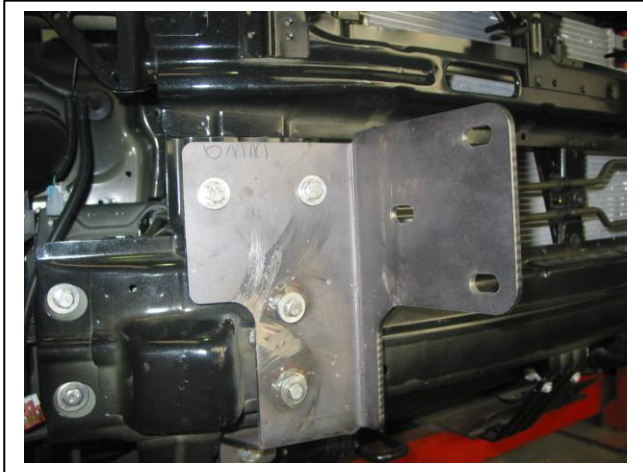


Figure 3: Outer mounting bracket fitted to front of radiator support

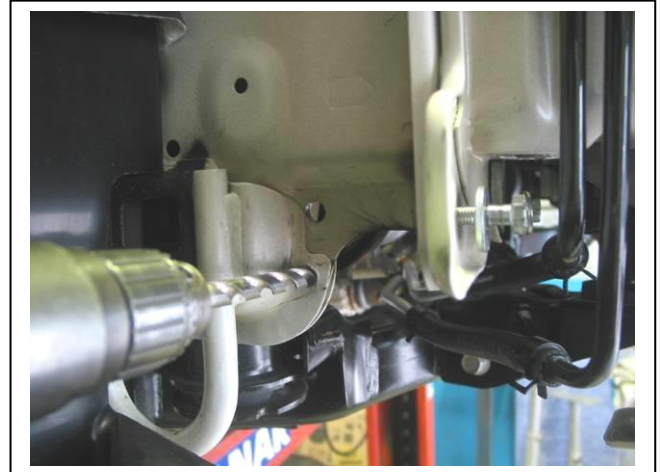
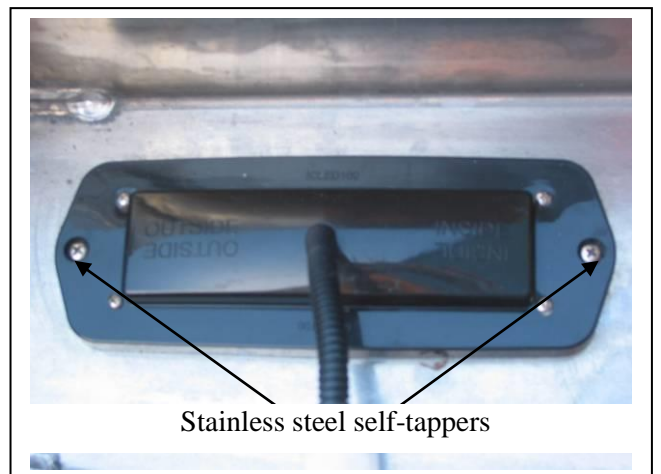


Figure 4: Drill rear chassis rail plate holes to 10mm.

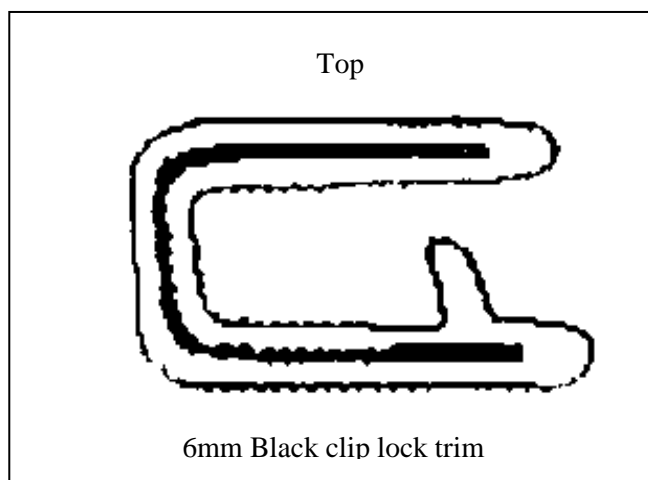


Figure 5: Bottom corner of drivers side air dam.
Trim along white line.



Stainless steel self-tappers

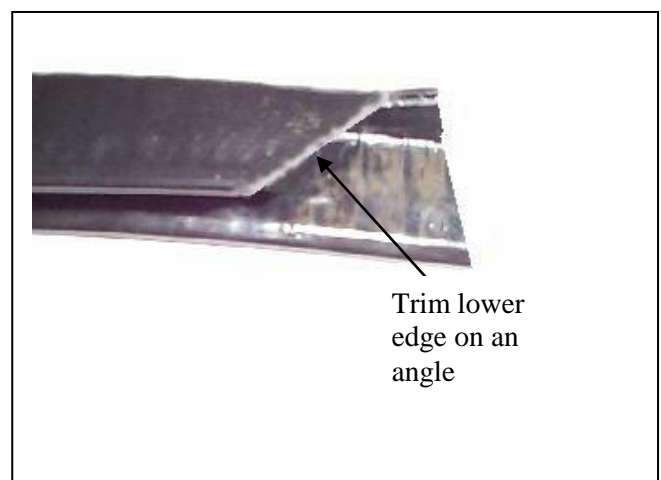
Figure 6



Top

6mm Black clip lock trim

Figure 7



Trim lower
edge on an
angle

Figure 8



**WORLD'S BEST
ALLOY BULLBARS**

East Coast Bullbars (ECB Pty Ltd)

Tel: 07 3897 5700

Fax: 07 3283 1168

ecb@ecb.com.au www.ecb.com.au

29 Snook St
Clontarf QLD 4019
Australia

Po Box 122
Margate QLD 4019
Australia

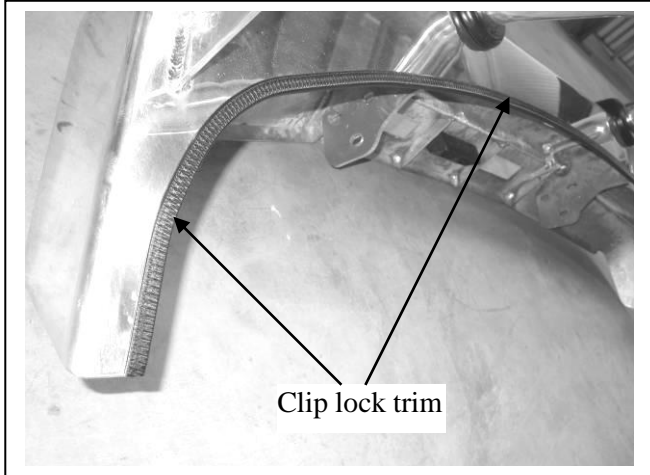


Figure 9



Figure 10: Front view



Figure 11: Side view



Figure 12: Slide trimmed grille behind bumper and clip into place.



**WORLD'S BEST
ALLOY BULLBARS**

East Coast Bullbars (ECB Pty Ltd)

Tel: 07 3897 5700

Fax: 07 3283 1168

ecb@ecb.com.au www.ecb.com.au

29 Snook St
Clontarf QLD 4019
Australia

Po Box 122
Margate QLD 4019
Australia

We value your comments

Dear Fitter,

ECB would like to know how you went with the installation of this product. We value your comment and may need to contact you to clarify some details so please complete your contact details clearly.

We would appreciate if you could complete as many of the following details as possible.

Your Name:	Your contact No.
Product Part No.	Product Invoice No.
Product Description:	Make, model, and year of vehicle:
Product Work Order No.	Company your from/Company product purchased from:

Date of Fitment: ____/____/____

Was the fitting hardware supplied complete?

Yes

No

If no what was not supplied

Did the installation go well?

Yes

No

Please provide comments

Please draw diagrams if you need to.

Post to
Reply Paid 122
PO Box 122
Margate QLD 4019

Fax to
(07) 3283 1168



WORLD'S BEST
ALLOY BULLBARS

East Coast Bullbars (ECB Pty Ltd)

Tel: 07 3897 5700

Fax: 07 3283 1168

ecb@ecb.com.au www.ecb.com.au

29 Snook St
Clontarf QLD 4019
Australia

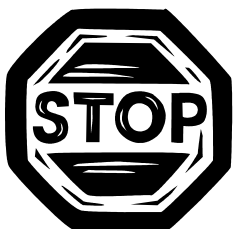
Po Box 122
Margate QLD 4019
Australia

DESPATCH CHECKLIST BH127SY

Work Order #	
Finish:	
Transport:	
Due Date:	

- 1 – Pair Steel outer mounting brackets.
- 1 – Pair steel crash can support mounts
- 1 – Pair steel chassis support mounts
- 2 – Lower mounting brackets
- 1 – Bolt Kit.
- 1 – LED ECB indicator / park light kit.
- 1 – Quick Click Indi / park Kit (IC11CAP5LED100H)
- 1 – 2400mm length 6mm clip lock
- 2 – 600mm length, 6mm clip lock
- 2 – ECB Overrides – **Fitted to Bar**
- 4 – 6mm Air Vents – **in fitting kit (not fitted to bar)**

**See other side of
this page for
photos of all
mounts**



Is this product “the best it can be” Yes _____ / _____

Wrapper's initials / Checker initials

If **NO** fix before continuing

All parts checked and completed by:

Nut and bolts: _____ Date __/__/__

Order control: _____ Date __/__/__

Final wrap check: _____ Date __/__/__



East Coast Bullbars (ECB Pty Ltd)

Tel: 07 3897 5700

Fax: 07 3283 1168

ecb@ecb.com.au www.ecb.com.au

WORLD'S BEST
ALLOY BULLBARS

29 Snook St
Clontarf QLD 4019
Australia

Po Box 122
Margate QLD 4019
Australia

