



WORLD'S BEST
ALLOY BULLBARS

East Coast Bullbars (ECB Pty Ltd)

Tel: 07 3897 5700

Fax: 07 3283 1168

ecb@ecb.com.au www.ecb.com.au

29 Snook St
Clontarf QLD 4019
Australia

Po Box 122
Margate QLD 4019
Australia

BH117SY

REPLACES: 00.00.00

REVISED: 20/10/17

FITTING INSTRUCTIONS

VF COMMODORE SV6 / SS / SS-V 5-13 on FOG LIGHT BIG TUBE BAR VEHICLE FRONTAL PROTECTION SYSTEM (VFPS) FOR AIR BAG & ADR COMPLIANT VEHICLES

Check installation hardware before commencing.

Special requirements: T15, T20 and T25 Torx bits and associated drivers.

If vehicle does not come with fog lights from factory. An ASL wiring kit has been included in this fitting kit to allow connection of ECB fog light into vehicle.

1. Lift bonnet.
2. From underside of bumper remove nine T20 Torx screws and two 13mm head bolts. Front of wheel arch remove three T15 Torx head screw (per side). Remove six 10mm head bolts and six T20 Torx head screws from top to bumper between grille and radiator. Remove cover trim. Remove two clips from top of bumper to radiator support. Unplug bumper sensor harness from under drivers side headlight. Pull out on rear bumper wing to release clips on guard (see **figure 1**) and forward to release plastic clips under headlights. Remove bumper from vehicle.
3. Remove under bumper skid plate. Three T15 Torx head screws from under front of wheel arch (per side) and four 13mm head bolts on underside.
4. Windscreen washer bottle unbolts (four 10mm head bolts) from rear of alloy cross member. **NOTE:** A deep socket is best suited for removing the three 10mm head bolts. Use caution near radiator; position a thin piece of metal or cardboard between ratchet and radiator to ensure no damage.
5. Remove alloy cross member from front of chassis. Six 13mm head bolts and two 10 mm head bolts on inside rear of chassis beside washer bottle bolts.
6. Install M10 x 30 bolt and washer on wire (supplied) through hole in bottom of chassis rail from front of chassis rail. Loosely fit steel support mount to bottom of chassis rail using flat washer, spring washer and nut in front slot. Test fit ECB mount bracket centrally to front of chassis rail using original equipment bolts. Align rear hole of ECB mount bracket to front hole of ECB support bracket and tighten bolt through chassis. **See figure 2.** Using rear hole of ECB support bracket as a guide drill, rear hole to 10mm. **Note: Blow filings clear and treat all exposed metal with a rust inhibitor.** Remove ECB mount bracket and install M10 x 30 bolt and washer on wire into rear hole. Install M10 x 30 bolt and washer on wire through hole in bottom of chassis rail from front of chassis rail. **See figure 3.** Do not tighten.
7. Slide steel mounting brackets (supplied) over alloy cross member and align all holes in steel mounting brackets to centre of holes in alloy cross member. Mark and drill 10mm holes both sides as per **figure 4.** **NOTE:** Holes drilled on underside of cross member, not on top.
8. Attach steel mounting brackets (supplied) to alloy cross member using 3/8 x 2 bolts, 3/8 nut plate on wire, flat and spring washers (supplied). **TIGHTEN BOLTS/NUTS.**
9. Trim plastic air dam using sharp knife, die grinder or similar, to allow fitment of steel mounting brackets. **See figure 5 and 6.**



**WORLD'S BEST
ALLOY BULLBARS**

East Coast Bullbars (ECB Pty Ltd)

Tel: 07 3897 5700

Fax: 07 3283 1168

ecb@ecb.com.au www.ecb.com.au

29 Snook St
Clontarf QLD 4019
Australia

Po Box 122
Margate QLD 4019
Australia

10. Fit steel mounting brackets and alloy cross member to front of chassis using six M8 x 1.25 x 30mm bolts, flat and spring washers (supplied) and original equipment 10mm head bolts to rear of chassis rails. **See figure 7.**
LOOSELY TIGHTEN BOLTS AT THIS POINT.
11. Check Passengers side support mount to ensure air conditioning lines are well clear of mount. Some adjustment of the air conditioning lines may be required.
12. Refit windscreen washer bottle to rear of cross member using original bolts. **NOTE:** Use caution near radiator, position a thin piece of metal or cardboard between ratchet and radiator to ensure no damage. **TIGHTEN ALL BOLTS** attaching steel mounting brackets and cross member to front of chassis.
13. Disconnect and remove all parking sensor from rear of plastic bumper and wiring harness. Remove fog light blanking and DRL from bumper cover on both sides to allow wiring to exit vehicle.
14. Fit and wire ECB ASL wiring kit to allow fitment of fog lights.
15. Trim lower grille and backing inserts in bumper cover to fit over steel mounting brackets. **See figure 8.**
16. Refit bumper cover using original bolts and clips.
17. Disconnect indicator and parking lights on vehicle. Install ECB quick click wiring harnesses (supplied) between disconnected harness and indicator / park lights on vehicle. Run wiring out from under lights ensuring clearance from sharp edges and moving parts.
18. Fit ECB LED indicator /DRL/ park lights into protection bar as per instructions supplied with the LED indicator kit. **See figure 9.** Connect wiring to DRL harness on vehicle using inline connectors (supplied) on positive wire only. **Do not reconnect original DRL.**
19. Attach ECB fog lights to protection bar. Place M6 x 20 bolts, spring washers (supplied) through light mount from inside and attach nut to top. Slide assembly into light mount in Protection bar and centralize light to hole. **TIGHTEN FIRM ONLY. See figure 10.**
20. Loosely zip tie parking sensor wiring harness into rear of ECB protection bar. **See figure 11.**
21. Ensure parking sensors have silicon ring around edge of sensor area of part. Gently place sensor into hole in ECB protection bar and twist into mounting bracket in rear of protection bar. Make sure sensor silicon ring is not folded or crimped in any way and is holding sensor away from protection bar. Connect sensor to wiring harness. Run zip tie (supplied) through both holes in mounting bracket from wiring side on mounting, under rear of sensor (wired connector end) and back through zip end of tie. Ensure sensor is sitting centrally in hole. Alloy sensor mount can be bent to suit. **See figure 12. Do not over tighten.**
22. Tighten parking sensor wiring harness into rear of protection bar. Ensure wiring to parking sensors does not affect fitment of parking sensors.
23. Attach 6mm clip lock trim (supplied) to top and the skirt cut outs of ECB protection bar. **NOTE:** Trim off lower edge on an angle so trim will sit flush with end of protection bar. **See figures 13, 14 and 15.**
24. Fit protection bar to inside of steel mounting brackets using six M10 x 30bolts, nuts, flat and spring washers (supplied). Note: Rear bolts are accessed from under vehicle.



East Coast Bullbars (ECB Pty Ltd)

Tel: 07 3897 5700

Fax: 07 3283 1168

ecb@ecb.com.au www.ecb.com.au

WORLD'S BEST
ALLOY BULLBARS

29 Snook St
Clontarf QLD 4019
Australia

Po Box 122
Margate QLD 4019
Australia

25. Align protection bar with vehicle. Refer to **figure 17** for front view and **figure 18** for side views. **TIGHTEN ALL BOLTS.**
26. Connect parking sensors to original equipment harness. Check sensor for correct operation. NOTE: Adjustment may be required.
27. Connect and test indicator /drl/ park lights and fog lights for correct operation.
28. Refit under body skid plate using original clips. Attach front of under body skid plate to front of bumper using original bolts. Ensure all other clips and bolts are refitted to top of bumper and plastic inner guard.

ENSURE NUMBER PLATE IS CLEARLY VISABLE

ENSURE THESE INSTRUCTIONS ARE LEFT WITH VEHICLE OWNER AND/OR OPERATOR

Note: When fitting/refitting the licence plate to the vehicle, ensure there is no obstruction to licence plate vision in accordance with local authorities. If required relocate licence plate to an alternate location.

Further VFPS Notes:

- a) Do not attach VFPS to the vehicle using anchorages not intended for this purpose (e.g. engine mounting bolts).
- b) Do not use this product for any vehicle make or model, other than those specified by the VFPS manufacturer.
- c) Do not remove the plaque or label from the VFPS.
- d) Do not modify the structure of the VFPS in any way.
- e) No accessory or fitment should project forward of the VFPS forward profile.
- f) **ENSURE THESE INSTRUCTIONS ARE LEFT WITH VEHICLE OWNER AND/OR OPERATOR.**

IMPORTANT INFORMATION

Periodically check bolts and nuts for correct tightness, especially if travelling on rough roads

FITTING KIT

1 – Pair Steel mounting brackets	2 – M6 x 20 bolts
1 – Pair steel support mounts	2 – M6 spring washers
2 – 3/8 x 2 bolts.	2 – M6 nuts
2 – 16 x 25 x 6mm, 3/8 nut plate on 400mm wire.	1 – ECB indicator park light kit (ICLED105ECB)
6 – M10 x 1.5 x 30 bolts	1 – ECB Quick click harness kit (IC13HOCOINDH)
4 – M10 x 1.5 x 30 bolts and washer on 300mm wire	1 – ECB fog light kit
10 – M10 x 1.5 nuts	2 – Fog light surrounds
18 – M10 flat washers	2 – Inline solder connectors
12 – M10 spring washers	1 – 2250mm Length 6mm clip lock trim
6 – M8 x 1.25 x 30 bolts.	2 – 450mm length 6mm clip lock trim
12 – M8 x 17 flat washers.	6 – 150mm zip ties
6 – M8 spring washers.	8 – 300mm zip ties
6 – M8 x 1.25 nuts	1 – ECB ASL wiring kit



**WORLD'S BEST
ALLOY BULLBARS**

East Coast Bullbars (ECB Pty Ltd)

Tel: 07 3897 5700

Fax: 07 3283 1168

ecb@ecb.com.au www.ecb.com.au

29 Snook St
Clontarf QLD 4019
Australia

Po Box 122
Margate QLD 4019
Australia



Figure 1

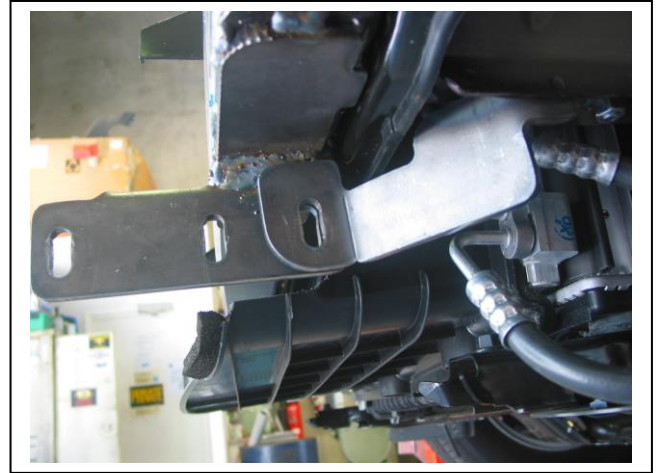


Figure 2 – Align rear hole in mount



Figure 3 – Assembled support mount

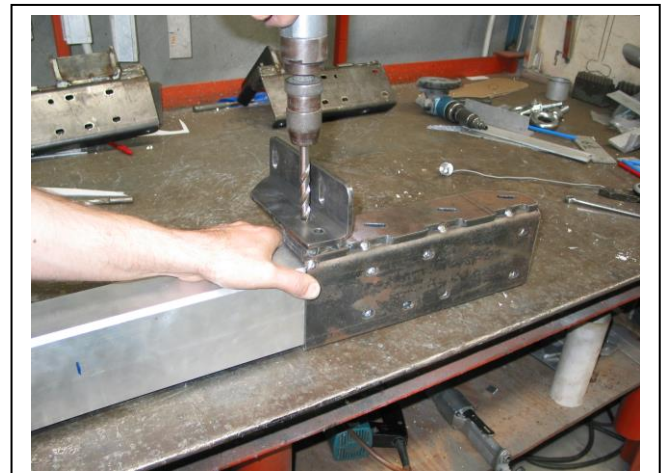


Figure 4

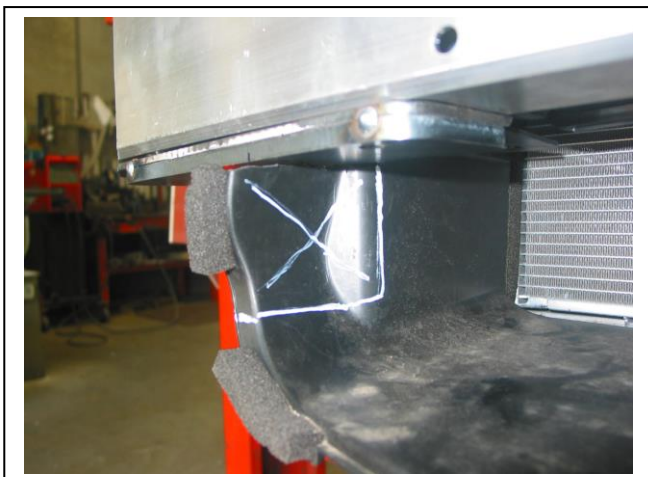


Figure 5 – Driver's side shown

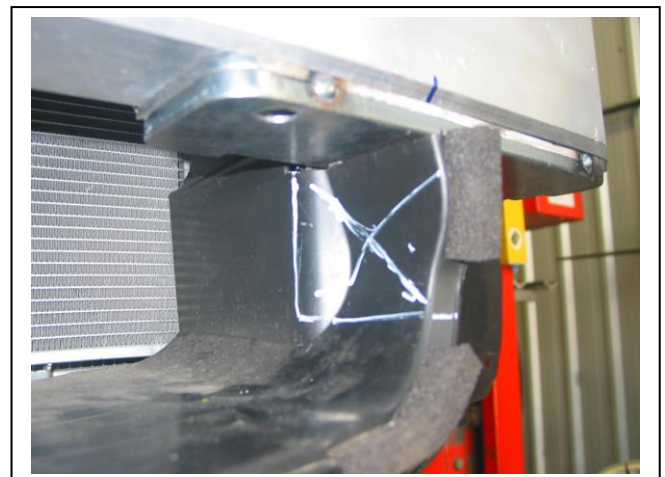


Figure 6 – Passengers side shown



East Coast Bullbars (ECB Pty Ltd)

Tel: 07 3897 5700

Fax: 07 3283 1168

ecb@ecb.com.au www.ecb.com.au

WORLD'S BEST
ALLOY BULLBARS

29 Snook St
Clontarf QLD 4019
Australia

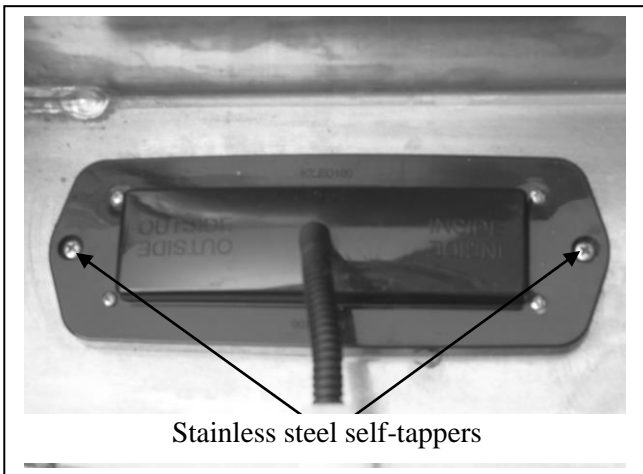
Po Box 122
Margate QLD 4019
Australia



Figure 7 – Steel mount fitted

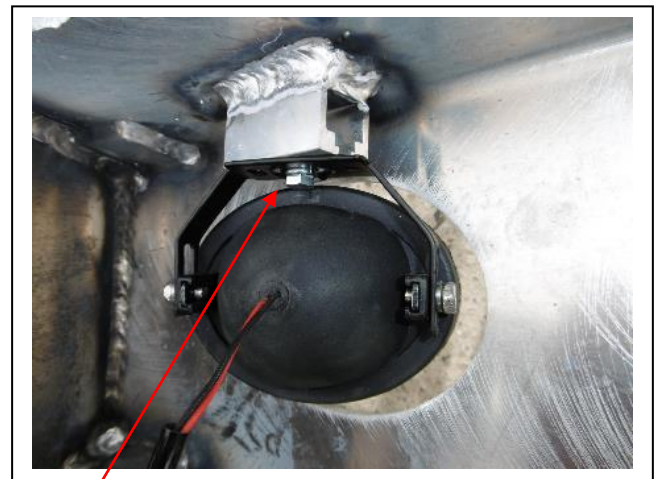


Figure 8 – Grille trim for steel mount



Stainless steel self-tappers

Figure 9



M6 bolt

Figure 10

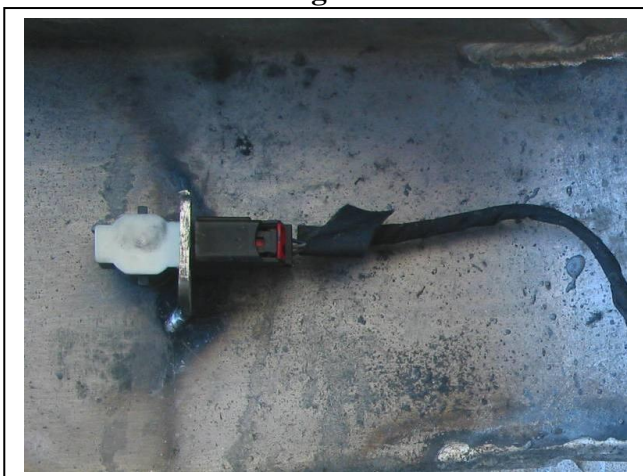


Figure 11 – Sensor mount fitted

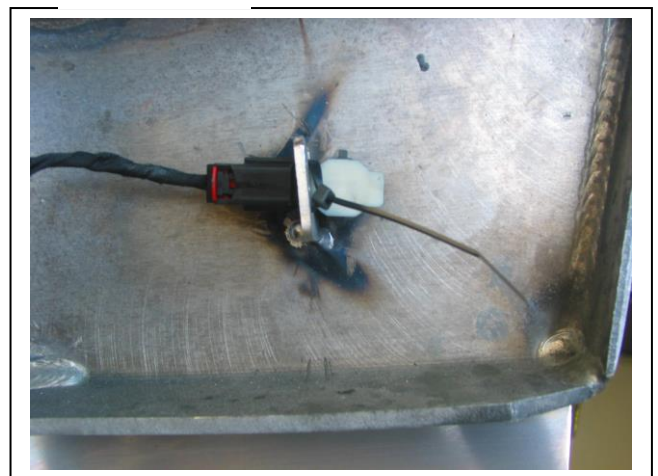


Figure 12 – Protection bar with sensors fitted



**WORLD'S BEST
ALLOY BULLBARS**

East Coast Bullbars (ECB Pty Ltd)

Tel: 07 3897 5700

Fax: 07 3283 1168

ecb@ecb.com.au www.ecb.com.au

29 Snook St
Clontarf QLD 4019
Australia

Po Box 122
Margate QLD 4019
Australia

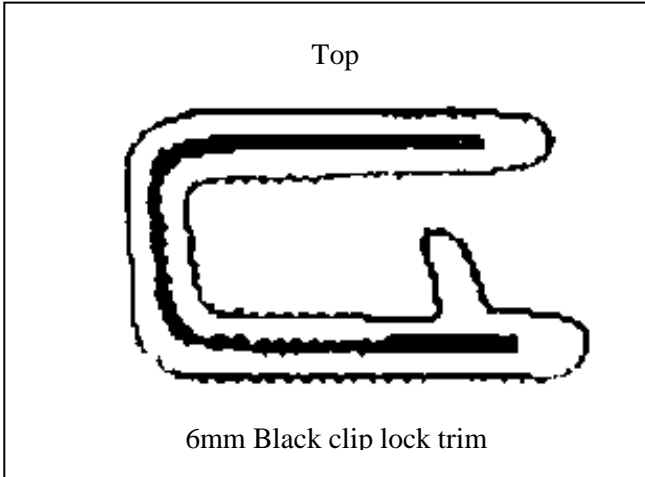


Figure 13

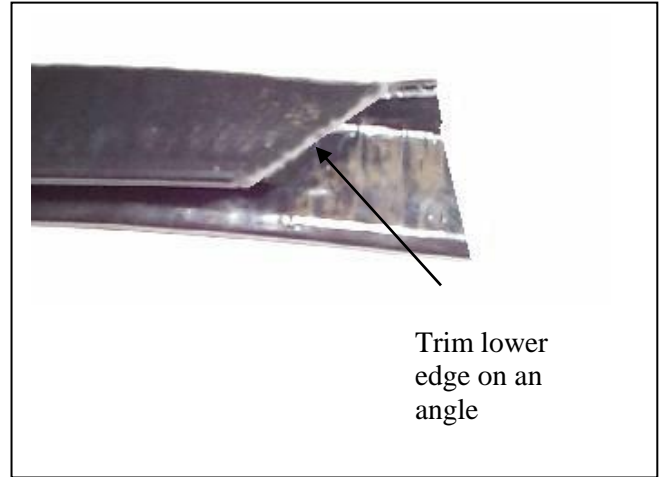


Figure 14

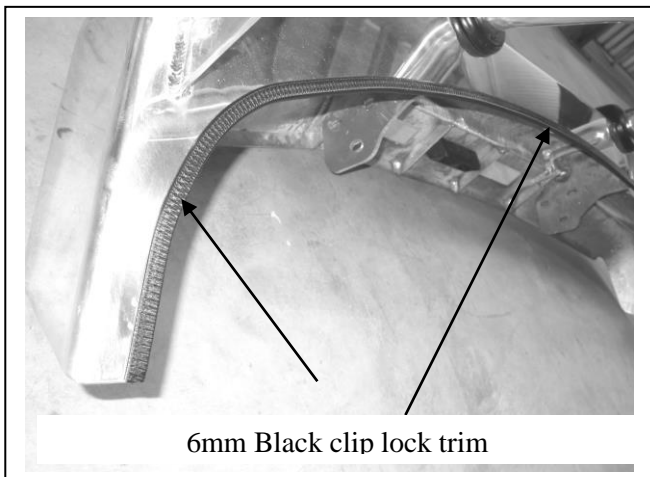


Figure 15



Figure 16 - Side View



Figure 17 – Side View



**WORLD'S BEST
ALLOY BULLBARS**

East Coast Bullbars (ECB Pty Ltd)

Tel: 07 3897 5700

Fax: 07 3283 1168

ecb@ecb.com.au www.ecb.com.au

29 Snook St
Clontarf QLD 4019
Australia

Po Box 122
Margate QLD 4019
Australia

We value your comments

Dear Fitter,

ECB would like to know how you went with the installation of this product. We value your comment and may need to contact you to clarify some details so please complete your contact details clearly.

We would appreciate if you could complete as many of the following details as possible.

Your Name:	Your contact No.
Product Part No.	Product Invoice No.
Product Description:	Make, model, and year of vehicle:
Product Work Order No.	Company your from/Company product purchased from:

Date of Fitment: ____/____/____

Was the fitting hardware supplied complete?

Yes

No

If no what was not supplied

Did the installation go well?

Yes

No

Please provide comments

Please draw diagrams if you need to.

Post to
Reply Paid 122
PO Box 122
Margate QLD 4019

Fax to
(07) 3283 1168



**WORLD'S BEST
ALLOY BULLBARS**

East Coast Bullbars (ECB Pty Ltd)

Tel: 07 3897 5700

Fax: 07 3283 1168

ecb@ecb.com.au www.ecb.com.au

29 Snook St
Clontarf QLD 4019
Australia

Po Box 122
Margate QLD 4019
Australia



WORLD'S BEST
ALLOY BULLBARS

East Coast Bullbars (ECB Pty Ltd)

Tel: 07 3897 5700

Fax: 07 3283 1168

ecb@ecb.com.au www.ecb.com.au

29 Snook St
Clontarf QLD 4019
Australia

Po Box 122
Margate QLD 4019
Australia

DESPATCH CHECKLIST BH117SY

Work Order #	
Finish:	
Transport:	
Due Date:	

- OC.....1 – Pair steel mounting brackets.
- OC.....1 – Pair steel support mounts
- BK.....1 – Bolt Kit.
- BK.....1 – ECB indicator/DRL/ park kit (ICLED105ECB)
- BK.....1 – ECB fog light kit
- BK.....1 – 2250mm Length 6mm clip lock trim
- BK.....2 – 450mm length 6mm clip lock trim
- BK.....1 – ECB Quick click harness kit (IC13HOCOINDH)
- BK.....1 – ECB ASL wiring kit
- OC.....1 – **Overrides fitted to bar**



Is this product “the best it can be” Yes _____/_____

If NO fix before continuing

All parts checked and completed by:

Nut and bolts: _____ Date __/__/__

Order control: _____ Date __/__/__

Final wrap check: _____ Date __/__/__



East Coast Bullbars (ECB Pty Ltd)

Tel: 07 3897 5700

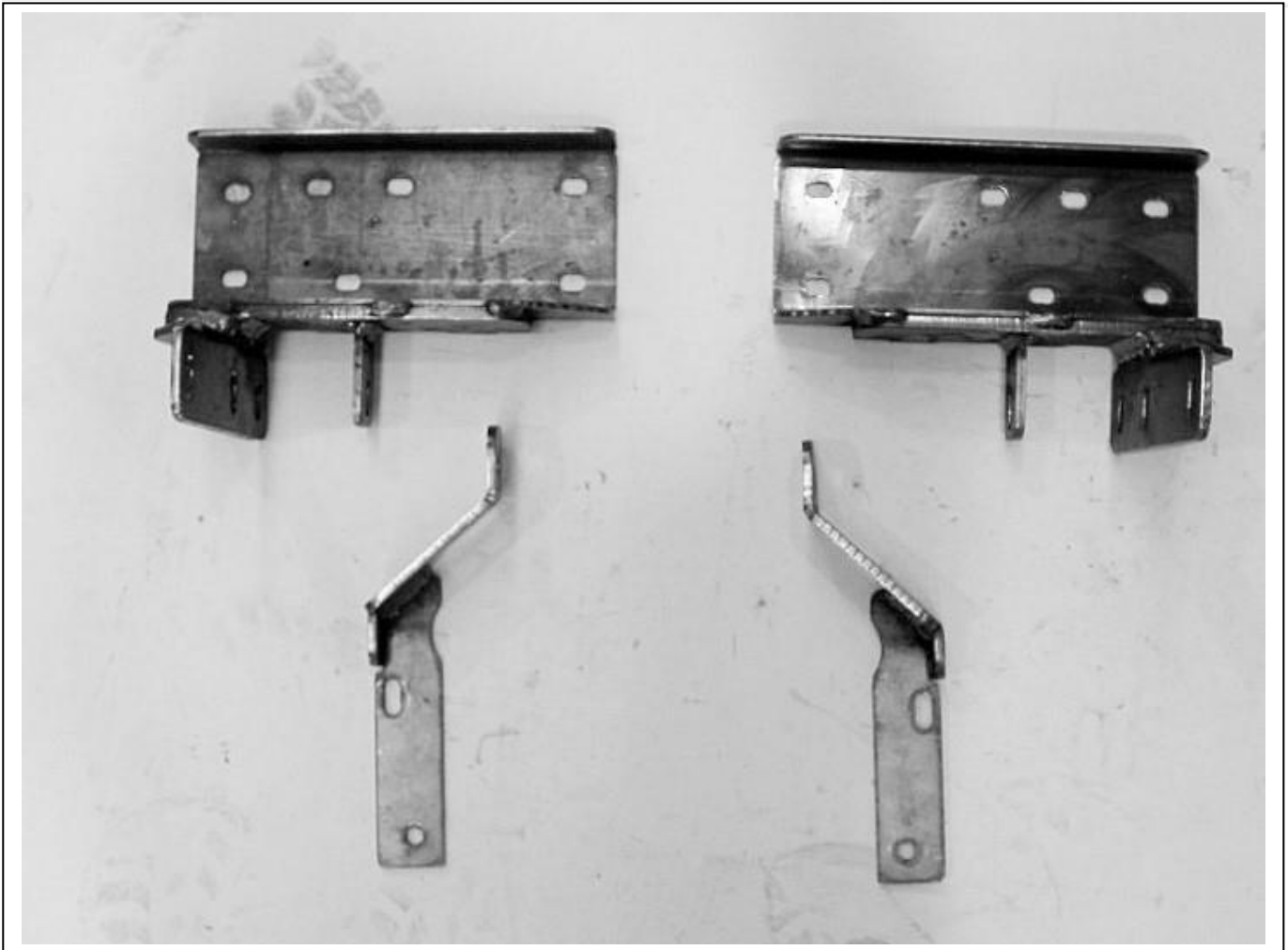
Fax: 07 3283 1168

ecb@ecb.com.au www.ecb.com.au

WORLD'S BEST
ALLOY BULLBARS

29 Snook St
Clontarf QLD 4019
Australia

Po Box 122
Margate QLD 4019
Australia



Wrapper's initials / Checker initials