



WORLD'S BEST
ALLOY BULLBARS

East Coast Bullbars (ECB Pty Ltd)

Tel: 07 3897 5700

Fax: 07 3283 1168

ecb@ecb.com.au www.ecb.com.au

29 Snook St
Clontarf QLD 4019
Australia

Po Box 122
Margate QLD 4019
Australia

BF77SY

REPLACES: 31.07.12

REVISED: 12.01.18

FITTING INSTRUCTIONS

FORD RANGER 10/11-8/15on BIG TUBE™ BAR WITH FOG LIGHTS VEHICLE FRONTAL PROTECTION SYSTEM (VFPS) FOR AIR BAG & ADR COMPLIANT VEHICLES

Check installation hardware before commencing.

NOTE: During the installation of these products, the bumper support is removed. Please ensure bumper support is given to the vehicle owner and they are aware they will require to be refitted if the product is removed. **See figure 1** for photo of items to be returned.



Figure 1 – Bumper support shown in two parts for photo

1. Lift bonnet
2. Remove three push pull clips from top cover on grille. Slide hand under cover and push centre of clip to rear to remove two clips on sides and eight clips holding front of cover. Remove cover. **CAUTION:** Excessive force will damage clips on cover. **See figure 2.**
3. Remove two push pull plastic clips from top outer corners of grille. Pull top of grille forward to allow hand room under centre air dam. Using a flat screw driver, place tip of screw driver through hole between air dam and bumper on outer corner of bumper/grille join. Gently lever clip down to release centre of clip while pulling grille forward. Release all clips on grille. **See figures 3 and 4.**
4. From behind grille remove one 10mm head bolt and one push pull plastic clip from inner lower corner of headlight and two plastic screw clips from under grille.
5. Under front of wheel arch remove four plastic screw clips and one 7mm head PK screw (per side), where bumper meets guard. Remove four 10mm head bolts from underside of bumper. Gently pull side of bumper out to release from guard clips. Remove bumper cover.
6. Remove plastic air dam from front of bumper support, four push pull plastic clips.
7. Remove two grey plastic clips from plastic air dam on rear of bumper support and two 15mm head bolts from front of under body steel guard. Loosen only the rear bolts from the under body steel guard and remove.
8. Remove bumper support, four 15mm head bolts. Return to customer for future refit should protection bar be removed.
9. Remove radiator air dams, two 8mm head bolts (per side). Retain bolts for refit at a later stage. Trim lower front from air dams to allow room for ECB steel mounting bracket. **See figures 5 and 6.** Drill holes in rear section of air dam to allow refit of air sensor.



**WORLD'S BEST
ALLOY BULLBARS**

East Coast Bullbars (ECB Pty Ltd)

Tel: 07 3897 5700

Fax: 07 3283 1168

ecb@ecb.com.au www.ecb.com.au

29 Snook St
Clontarf QLD 4019
Australia

Po Box 122
Margate QLD 4019
Australia

10. Remove four lower bumper supports. **See figures 7 and 8.**
11. Refit radiator air dams to radiator support using original equipment 8mm head bolts.
12. Remove plastic bumper supports from under headlight and guard edge, four 10mm head bolts and one 10mm head screw. Refit one 10mm head bolt into front corner of guard to headlight. **Tighten bolts.**
13. Fit ECB steel mounting bracket (supplied) to front of chassis by sliding down from top of chassis. Rear of steel mounting bracket will be tight on outside of chassis. This is an expansion fit. Refit four original equipment bolts to front of chassis rails and two 3/8 x 1 1/2 bolts, flat washers, spring washers and nuts (supplied) to front hole on side of chassis. **See figure 9. NOTE: Extra holes in steel mounting bracket chassis face plates are not required for non winch bars.**
14. Using ECB steel mounting bracket as a guide, drill rear hole in chassis to 10mm. **Blow filings clear and treat all exposed metal with a rust inhibitor.** Fit 3/8 x 1 1/2 bolts, spring washer, flat washer and nut and washer on 300mm wire (supplied).
15. Fit plastic air dams to rear of ECB mounting bracket using original equipment grey plastic clips. Refit air sensor
16. Disconnect indicator and parking lights on vehicle. Install ECB quick click wiring harnesses between disconnected harness and indicator / park lights on vehicle. Run wiring out from under lights ensuring clearance from sharp edges and moving parts.
17. Install ECB quick click wiring harness into original equipment fog light connectors. Should vehicle not have original equipment fog lights, an aftermarket wiring harness will need to be installed.
18. Attach ECB lower grille mounts (supplied) to lower mount of headlight using original equipment 10mm head bolt. **See figure 10. Finger tighten only.**
19. Fit grille to vehicle using original equipment top clips. For lower mounts, rotate ECB lower grille mounts so outer front edge supports outer enclosed section of grille. Using ECB lower grille mounts as a guide, drill 4mm guide hole through lower section of grille. Rotate ECB lower grille mounts out of way and enlarge guide holes to 8mm. Fit grille to ECB lower grille mounts using black plastic clips removed from front of bumper support. Place head to top (grille) side. **Tighten all bolts. See figure 11.**
20. Attach ECB rear guard infill's to front bumper rear mounting point on guard using original equipment 8mm head screws. Align to run level with edge of guard. **See figure 12.**
21. Attach three pieces of 6mm clip lock trim (supplied) to top of ECB protection bar, one to centre and one each side to outer wing sections of protection bar. **NOTE:** Trim off lower edge on an angle so trim will sit flush with end of protection bar. **See figures 13, 14 and 15.**
22. Attach ECB alloy headlight infill's to top of protection bar using M6 x 25 bolts, spring washers and flat washers. **See figure 16. Finger tighten only.**
23. Fit ECB LED indicator / park lights into protection bar as per instructions supplied with the LED indicator kit. **NOTE: Ensure park light is to outside. See figure 17.**
24. Attach ECB fog lights to protection bar. Place M6 x 20 bolts, spring washers (supplied) through light mount from inside and attach nut to top. Slide assembly into light mount in Protection bar and centralize light to hole. **TIGHTEN FIRM ONLY. See figure 18.**



**WORLD'S BEST
ALLOY BULLBARS**

East Coast Bullbars (ECB Pty Ltd)

Tel: 07 3897 5700

Fax: 07 3283 1168

ecb@ecb.com.au www.ecb.com.au

29 Snook St
Clontarf QLD 4019
Australia

Po Box 122
Margate QLD 4019
Australia

25. Fit ECB protection bar to outside of ECB steel mounting bracket using ½ x 1 ½ bolts, flat washers, spring washers and nuts (supplied). **Finger tighten only.**
26. Align ECB protection bar to vehicle. **See figures 19 and 20. Tighten all bolts.**
27. Align ECB alloy headlight infill's with vehicle headlights and tighten. **Caution:** Do not over tighten as this could damage or possibly remove the nuts from the alloy infill.
28. Connect and check ECB indicator / park lights and fog lights for correct operation.
29. Install ECB under body guards to top of lower leg of channel section of protection bar with rear flange pointing down. **See figure 21.** Access to inner hole from side of plate, rear hole from behind inner guard and front outer hole through access hole in under body guard. Use two M6 x 25 bolts, one M6 x 25 bolt and washer on 100mm wire, flat washers and nyloc nuts (per side). **See figure 22**
30. Using under body guard as a guide, drill holes in inner guard to 6mm and attach using two M6 x 20 bolts, flat washers and nyloc nuts (per side). Trim inner guards from bottom of channel to vehicles inner guard removing lower section. **See figure 23.**

ENSURE NUMBER PLATE IS CLEARLY VISABLE

Note: When fitting/refitting the licence plate to the vehicle, ensure there is no obstruction to licence plate vision in accordance with local authorities. If required relocate licence plate to an alternate location.

Further VFPS Notes:

- a) Do not attach VFPS to the vehicle using anchorages not intended for this purpose (e.g. engine mounting bolts).
- b) Do not use this product for any vehicle make or model, other than those specified by the VFPS manufacturer.
- c) Do not remove the plaque or label from the VFPS.
- d) Do not modify the structure of the VFPS in any way.
- e) No accessory or fitment should project forward of the VFPS forward profile.
- f) **ENSURE THESE INSTRUCTIONS ARE LEFT WITH VEHICLE OWNER AND/OR OPERATOR.**

IMPORTANT INFORMATION

Periodically check bolts and nuts for correct tightness, especially if travelling on rough roads

FITTING KIT

1 – ECB Steel mounting bracket	8 – M6 x 25 bolts
1 – Pair alloy under body guards (powdercoated black)	2 – M6 x 25 bolt on 100mm wire
1 – Pair steel lower grille mounts	10 – M6 x 20 bolts
1 – Pair Alloy headlight infill's with 430mm of 3mm clip lock trim and M6 nutsert fitted	32 – M6 flat washers
1 – Pair Alloy rear guard infill's (powdercoated black)	6 – M6 spring washers
8 – ½ x 1 ½ bolts	2 – M6 nuts
16 – ½ flat washers	14 – M6 nyloc nuts
8 – ½ spring washers	1 – ECB indicator / park light kit (ICLED100)
8 – ½ nuts	1 – ECB quick click harness kit (IC11RANGLED100H)
4 – 3/8 x 1 ½ bolts	1 – ECB fog light kit
6 – 3/8 flat washers	1 – ECB fog light quick click kit (IC11RAN1004ECBH)
4 – 3/8 spring washers	2 – ECB fog light surrounds
2 – 3/8 nuts	2 – 380mm Lengths 6mm clip lock trim
2 – 3/8 nut and washer on 300mm wire	1 – 1200mm Length 6mm clip lock trim



East Coast Bullbars (ECB Pty Ltd)

Tel: 07 3897 5700

Fax: 07 3283 1168

ecb@ecb.com.au www.ecb.com.au

WORLD'S BEST
ALLOY BULLBARS

29 Snook St
Clontarf QLD 4019
Australia

Po Box 122
Margate QLD 4019
Australia



Figure 2: Clip on front of grille cover



Figure 3: Clip on underside of grille



Figure 4: Position of clip with grille removed.



Figure 5: Drivers die air dam

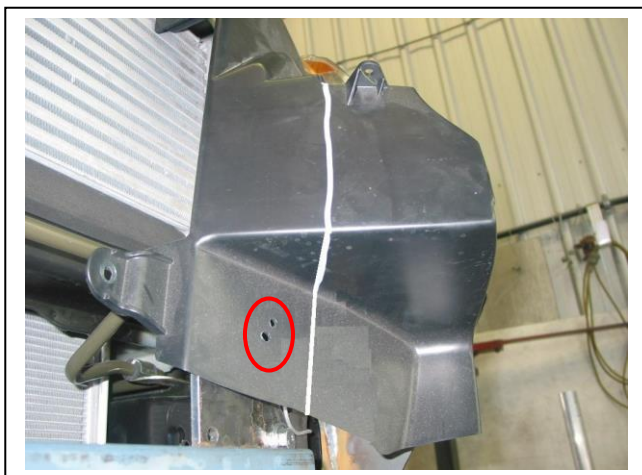


Figure 6: Passengers side air dam trim line and Air sensor positioning shown.



Figure 7: Remove center lower bumper supports



East Coast Bullbars (ECB Pty Ltd)

Tel: 07 3897 5700

Fax: 07 3283 1168

ecb@ecb.com.au www.ecb.com.au

WORLD'S BEST
ALLOY BULLBARS

29 Snook St
Clontarf QLD 4019
Australia

Po Box 122
Margate QLD 4019
Australia



Figure 8: Remove side lower bumper supports.
Use removed bolts to fit ECB inner guard supports

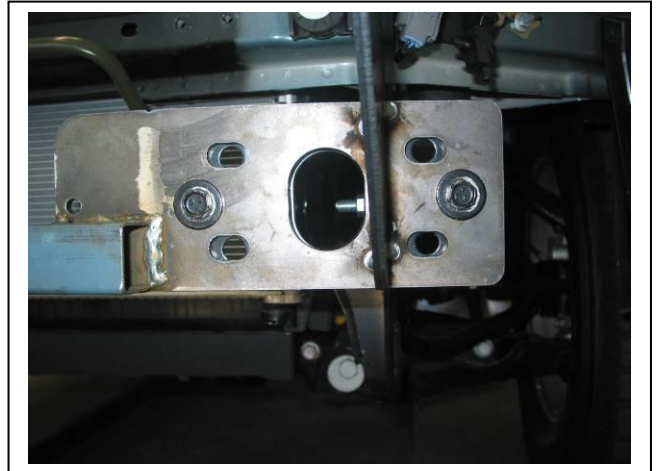


Figure 9: Use original equipment bolts in front of chassis

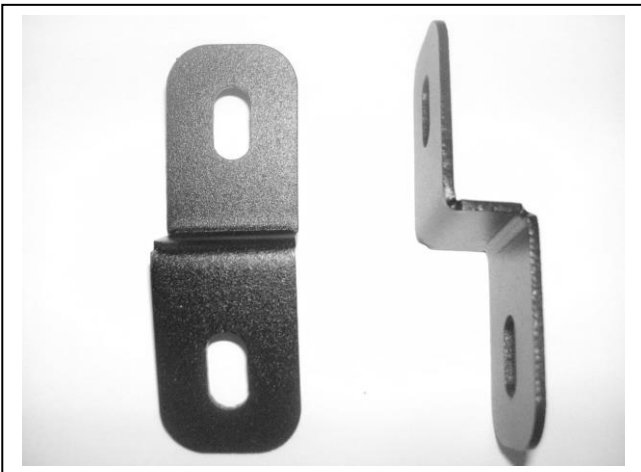


Figure 10: Lower grille mount

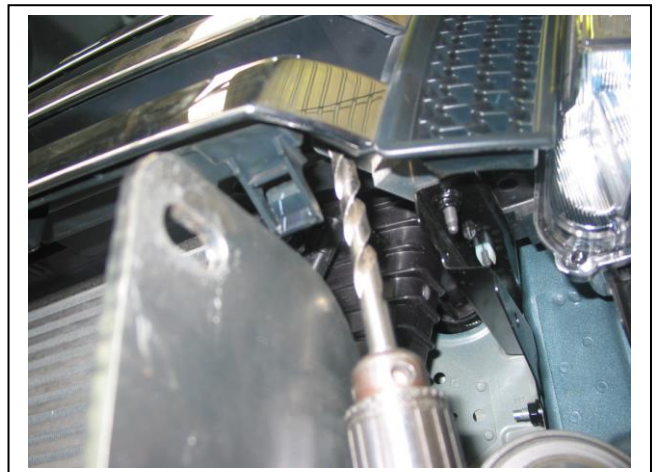


Figure 11: Drilling ECB lower grille mounts

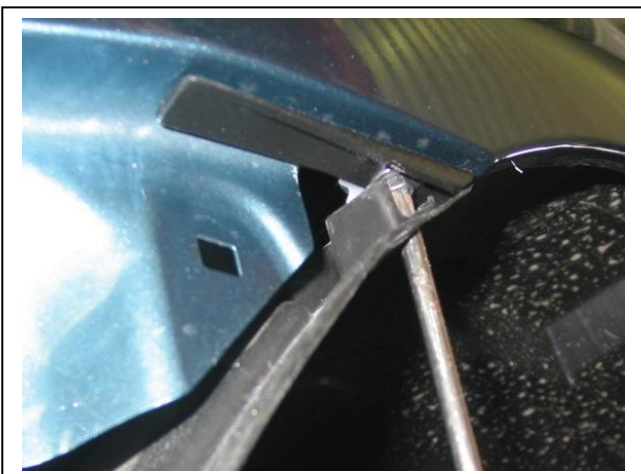


Figure 12: ECB rear guard infills



Figure 13: Passengers side clip lock trim fitted



East Coast Bullbars (ECB Pty Ltd)

Tel: 07 3897 5700

Fax: 07 3283 1168

ecb@ecb.com.au www.ecb.com.au

29 Snook St
Clontarf QLD 4019
Australia

Po Box 122
Margate QLD 4019
Australia

WORLD'S BEST
ALLOY BULLBARS



Figure 14: Centre clip lock trim fitted

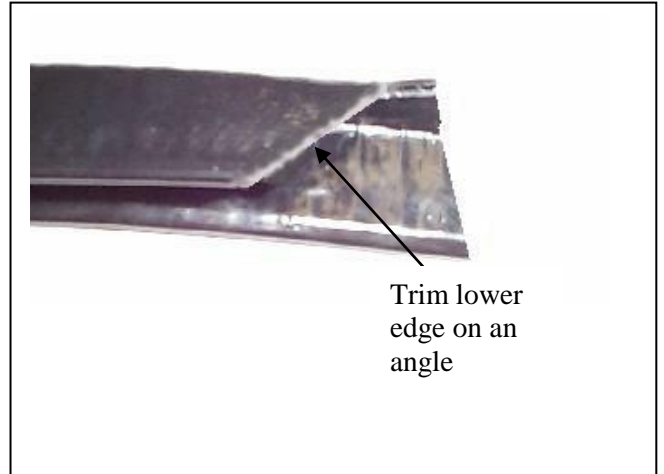


Figure 15



Figure 16

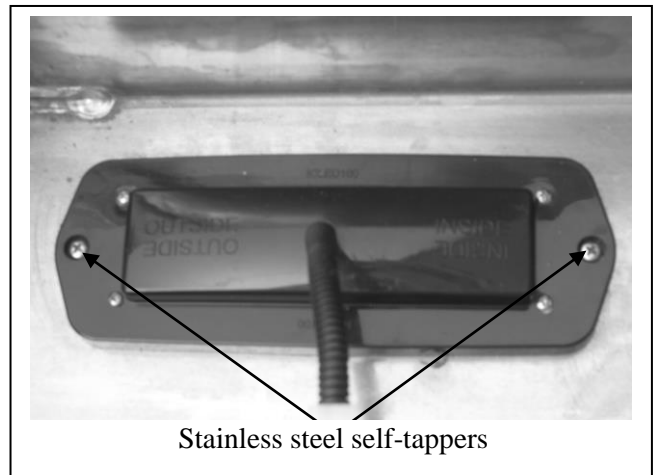
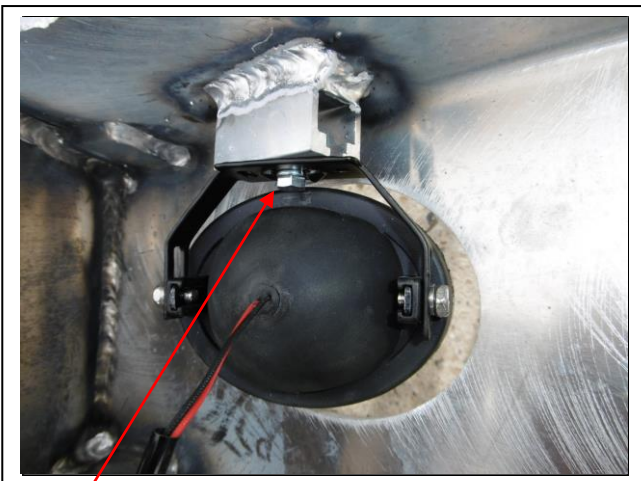


Figure 17



M6 bolt

Figure 18



Figure 19: Front view



**WORLD'S BEST
ALLOY BULLBARS**

East Coast Bullbars (ECB Pty Ltd)

Tel: 07 3897 5700

Fax: 07 3283 1168

ecb@ecb.com.au www.ecb.com.au

29 Snook St
Clontarf QLD 4019
Australia

Po Box 122
Margate QLD 4019
Australia



Figure 20: Side view



Figure 21: Placement of under body guard.
Bumper removed for photo.

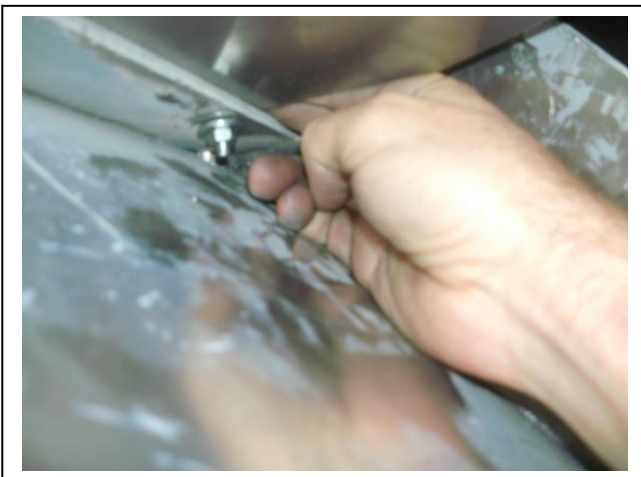


Figure 22: Placing bolt in from side of under body guard.



Figure 23: Cut line for inner guard.



**WORLD'S BEST
ALLOY BULLBARS**

East Coast Bullbars (ECB Pty Ltd)

Tel: 07 3897 5700

Fax: 07 3283 1168

ecb@ecb.com.au www.ecb.com.au

29 Snook St
Clontarf QLD 4019
Australia

Po Box 122
Margate QLD 4019
Australia

We value your comments

Dear Fitter,

ECB would like to know how you went with the installation of this product. We value your comment and may need to contact you to clarify some details so please complete your contact details clearly.

We would appreciate if you could complete as many of the following details as possible.

Your Name:	Your contact No.
Product Part No.	Product Invoice No.
Product Description:	Make, model, and year of vehicle:
Product Work Order No.	Company your from/Company product purchased from:

Date of Fitment: ___/___/___

Was the fitting hardware supplied complete?

Yes

No

If no what was not supplied

Did the installation go well?

Yes

No

Please provide comments

Please draw diagrams if you need to.

Post to
Reply Paid 122
PO Box 122
Margate QLD 4019

Fax to
(07) 3283 1168



WORLD'S BEST
ALLOY BULLBARS

East Coast Bullbars (ECB Pty Ltd)

Tel: 07 3897 5700

Fax: 07 3283 1168

ecb@ecb.com.au www.ecb.com.au

29 Snook St
Clontarf QLD 4019
Australia

Po Box 122
Margate QLD 4019
Australia

DESPATCH CHECKLIST BF77SY

ICZBKCF77



Work Order #		See other side off this page for photos of all mounts
Finish:		
Transport:		
Due Date:		

- OC..... 1 – Steel mounting bracket.
- OC.....1 – Pair Alloy Under Body Guard marked (F) (P/C BLACK)
- BK.....1 – Pair steel lower grille mounts (P/C BLACK)
- OC.....1 – Pair alloy headlight infill's with **430mm clip lock trim and M6 nutsert fitted** (P/C black for polished bar, Colour to bar for P/C finishes)
- BK.....1 – Pair alloy rear guard infills (P/C black)
- BK.....1 – Bolt Kit.
- OC.....1 – Pair ECB Overriders – **Fitted to Bar**
- OC.....7 – 6mm Air Scoops – **Fitted to Bar**
- BK.....1 – ECB indicator / park light kit (ICLED100)
- BK.....1 – ECB indicator wiring harness kit (IC11RANGLED100H)
- BK.....1 – ECB fog light kit
- BK.....1 – ECB fog light wiring harness kit (IC11RAN1004ECBH)
- BK.....2 – Fog light surrounds
- BK.....2 – 380mm lengths, 6mm clip lock trim
- BK.....1 – 1200mm length, 6mm clip lock trim
- OC..... Agi-pipe must be put on the end of the bar – see photo for placement**



Is this product "the best it can be" Yes _____ / _____
Wrapper's initials / Checker initials

If **NO** fix before continuing

All parts checked and completed by:

Nut and bolts: _____ Date __/__/__

Order control: _____ Date __/__/__

Final wrap check: _____ Date __/__/__



East Coast Bullbars (ECB Pty Ltd)

Tel: 07 3897 5700

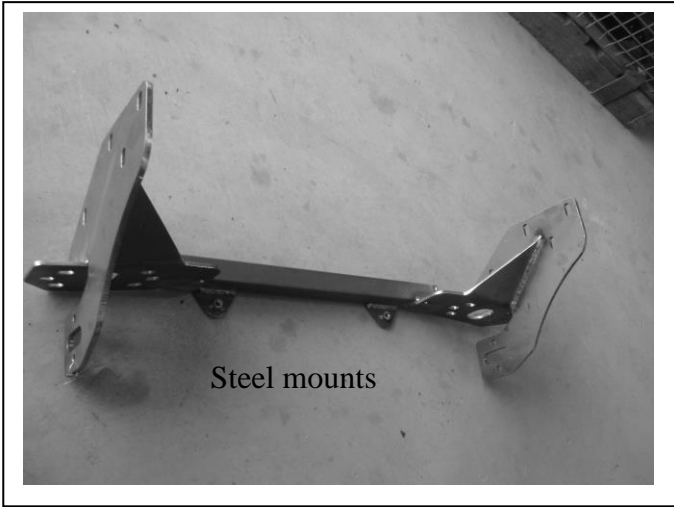
Fax: 07 3283 1168

ecb@ecb.com.au www.ecb.com.au

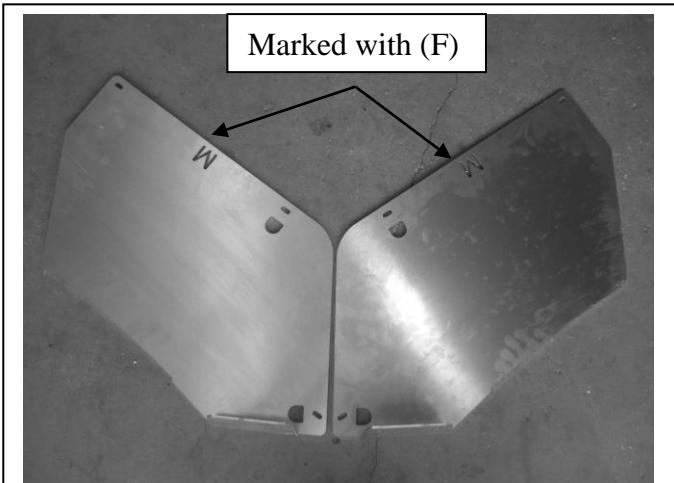
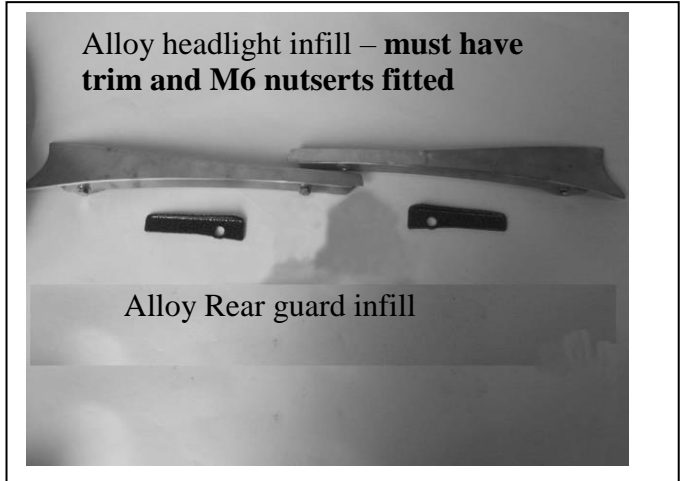
29 Snook St
Clontarf QLD 4019
Australia

Po Box 122
Margate QLD 4019
Australia

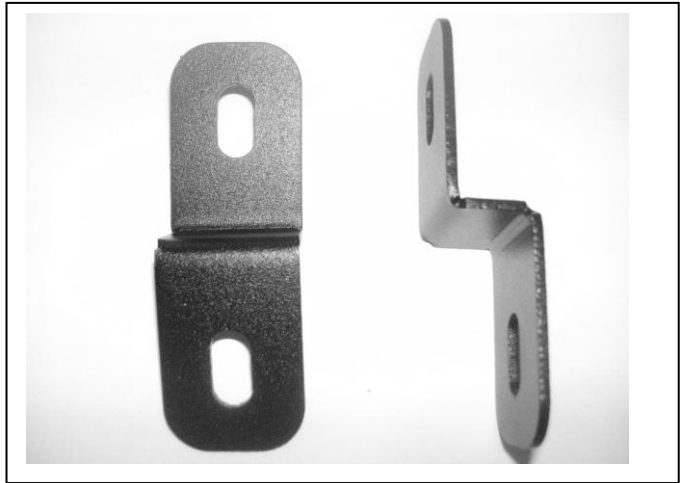
**WORLD'S BEST
ALLOY BULLBARS**



Steel mounts



Alloy Under Body Guards (F)



Steel Grille mounts



Ensure Wing is wrapped with Agi-Pipe