



**WORLD'S BEST  
ALLOY BULLBARS**

**East Coast Bullbars (ECB Pty Ltd)**

Tel: 07 3897 5700

Fax: 07 3283 1168

ecb@ecb.com.au www.ecb.com.au

29 Snook St  
Clontarf QLD 4019  
Australia

Po Box 122  
Margate QLD 4019  
Australia

**BF69SY**

REPLACES: 18.02.10  
REVISED: 09.07.10

## **FITTING INSTRUCTIONS**

### **FORD RANGER PK 04/09-09/11 BIG TUBE™ BAR VEHICLE FRONTAL PROTECTION SYSTEM (VFPS) FOR AIR BAG & ADR COMPLIANT VEHICLES**

Check installation hardware before commencing.

1. Lift bonnet. Remove grille, two plastic clips (one each side of bonnet latch), two Phillips head screws and two plastic clips (one screw, one clip each side) beside headlamps. Gently pull grille forward at top, slide hand to underside to release clips, pull grille upward and forward to remove.
2. Remove bumper cover from vehicle. Two Phillips screws and two push pull plastic clips from under grille, two 10mm head bolts and two 8mm bolts from rear of bumper wings under guards (one each side), light wiring from rear of lights and two plastic clips from under front of bumper cover. Carefully pull cover toward side of vehicle and unclip. Gently lift bumper forward and remove.
3. Remove bumper cover support. Access from under front of support, two 17mm head bolts (one each side) and inside engine bay on top of chassis rail. Two 17mm head bolts (one each side). **See figure 1.**
4. Locate vehicle wiring loom for indicator / park lights on front of radiator support under headlamps. Splice ECB indicator / park light wiring (supplied) into vehicle wiring loom. Use cable locks (supplied).
5. Remove passenger side tow hook / tie down bracket. Four 17mm head bolts. **See figure 2.**
6. Remove driver's side tie down bracket. Two 17mm head bolts.
7. Attach ECB steel angle bracket (supplied) to tie down hook captive nuts, angle leg to outside of vehicle. Use two M12 x 1.5 x 35mm bolts, flat and spring washers (supplied) on underside of chassis. **FINGER TIGHTEN ONLY. See figure 3.**
8. Gently bend front tube on oil cooler vertically (if fitted) as per **figures 4 and 5**, to clear mount. **CAUTION:** Excessive force will damage cooler.
9. Attach steel mounting bracket (supplied) to chassis where bumper cover support brackets were removed. Place lower leg to inside of angle brackets attached to chassis. Use original bolts for top fitment and two 3/8 x 1 1/2 bolts, flat and spring washers and nuts (supplied) (each side) for lower leg. Align with vehicle, checking bracket is centred. **TIGHTEN IN POSITION ON TOP FRONT BOLTS ONLY. NOTE: Steel mounting bracket must not touch turbo cooler, oil cooler or air conditioning receiver dryer. See figures 6 and 7. If steel mounting brackets are scratched when fitted then treat with a rust inhibitor or similar.**
10. **TIGHTEN BOLTS**, front of chassis rail first, followed by top of chassis rail, tow points on chassis rail and finally mounting bracket lower leg to steel angle brackets.
11. Refit bumper cover in the reverse order to step 1.
12. Fit ECB LED indicator / park lights (supplied) into protection bar as per instructions supplied with the LED indicator kit. **NOTE: Ensure park light is to outside. See figure 8.**



East Coast Bullbars (ECB Pty Ltd)

Tel: 07 3897 5700

Fax: 07 3283 1168

ecb@ecb.com.au www.ecb.com.au

WORLD'S BEST  
ALLOY BULLBARS

29 Snook St  
Clontarf QLD 4019  
Australia

Po Box 122  
Margate QLD 4019  
Australia

13. Fit 6mm clip lock trim (supplied) to rear of protection bar **NOTE:** Trim off lower edge on 6mm trim on an angle so trim will sit flush with end of protection bar. **See figures 9,10,and 11**
14. Attach protection bar to inside of steel mounting brackets. Use six ½ x 1 ½ bolts, flat and spring washers and nuts (supplied) **DO NOT TIGHTEN.**
15. Align protection bar with vehicle. **See figures 12 and 13. TIGHTEN ALL BOLTS.**
16. Connect indicator / park light wiring. **CHECK OPERATION.**

**NOTE:** For turbo diesel models upper three air vents are to be fitted with ECB logo at bottom direct air onto turbo cooler.

### **ENSURE NUMBER PLATE IS CLEARLY VISABLE**

**Note:** When fitting/refitting the licence plate to the vehicle, ensure there is no obstruction to licence plate vision in accordance with local authorities. If required relocate licence plate to an alternate location.

#### **Further VFPS Notes:**

- a) Do not attach VFPS to the vehicle using anchorages not intended for this purpose (e.g. engine mounting bolts).
- b) Do not use this product for any vehicle make or model, other than those specified by the VFPS manufacturer.
- c) Do not remove the plaque or label from the VFPS.
- d) Do not modify the structure of the VFPS in any way.
- e) No accessory or fitment should project forward of the VFPS forward profile.
- f) **ENSURE THESE INSTRUCTIONS ARE LEFT WITH VEHICLE OWNER AND/OR OPERATOR.**

### **IMPORTANT INFORMATION**

Periodically check bolts and nuts for correct tightness, especially if travelling on rough roads

#### **FITTING KIT**

1 – Steel mounting bracket.	6 – ½ nuts
1 – Pair steel angle mounting brackets.	16 – ½ flat washers.
4 – 3/8 x 1 ½ bolts.	10 – ½ spring washers.
4 – 3/8 nuts	1 – ECB LED Indicator / Park light kit
8 – 3/8 flat washers.	6 – Cable locks
4 – 3/8 spring washers.	1 – 2300mm length of 6mm clip lock trim
4 – M12 x 1.5 x 35mm bolts.	2 – 150mm zip ties.
6 – ½ x 1 ½ bolts	



East Coast Bullbars (ECB Pty Ltd)

Tel: 07 3897 5700

Fax: 07 3283 1168

ecb@ecb.com.au www.ecb.com.au

WORLD'S BEST  
ALLOY BULLBARS

29 Snook St  
Clontarf QLD 4019  
Australia

Po Box 122  
Margate QLD 4019  
Australia

17mm bolt Bumper Cover Support 17mm head bolt

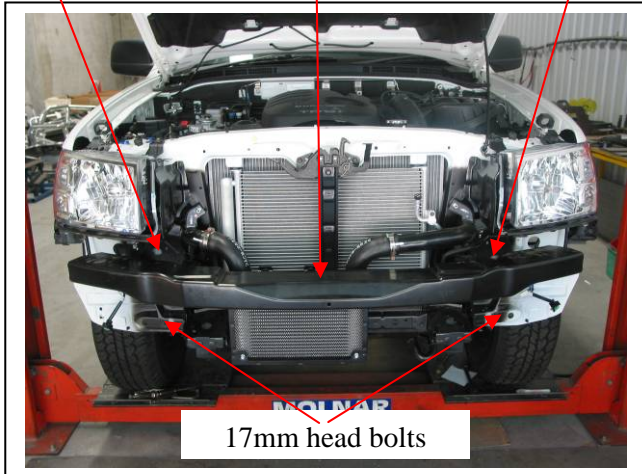


Figure 1

17mm head bolts

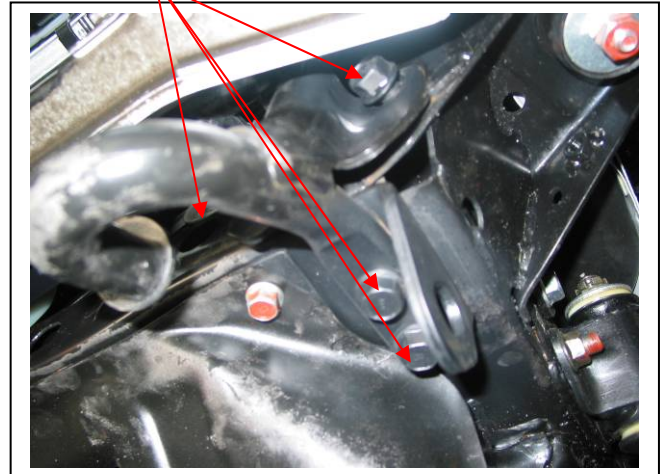


Figure 2 – Passenger side shown

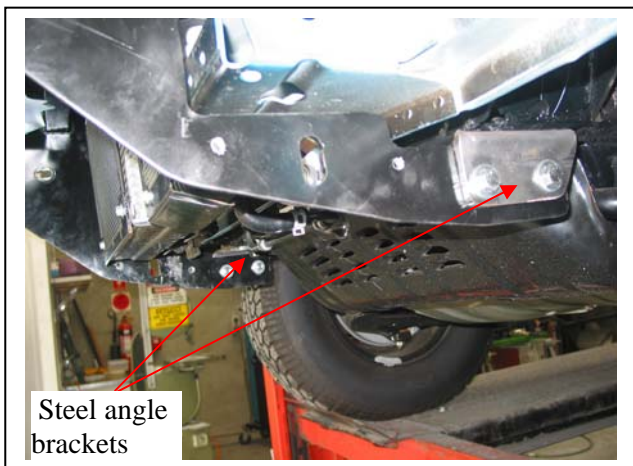


Figure 3

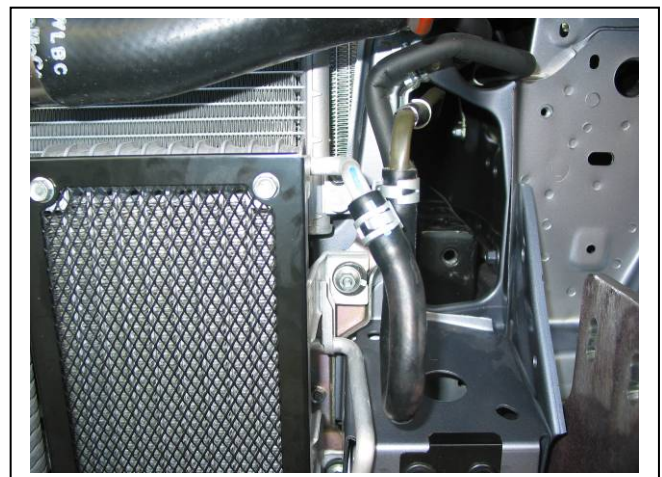


Figure 4

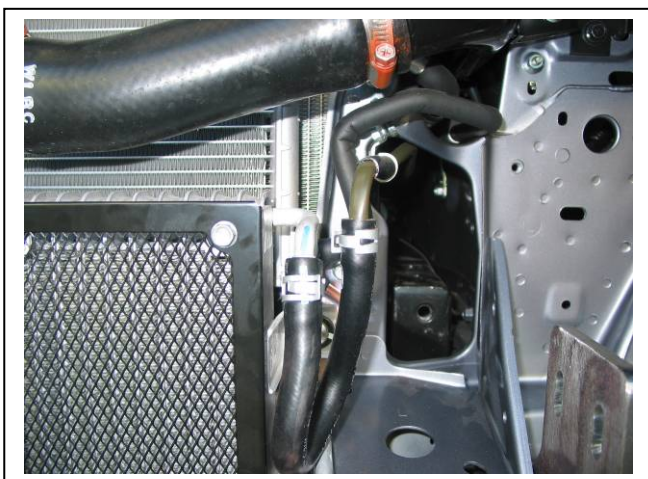


Figure 5



Figure 6 – Drivers side shown



East Coast Bullbars (ECB Pty Ltd)

Tel: 07 3897 5700

Fax: 07 3283 1168

ecb@ecb.com.au www.ecb.com.au

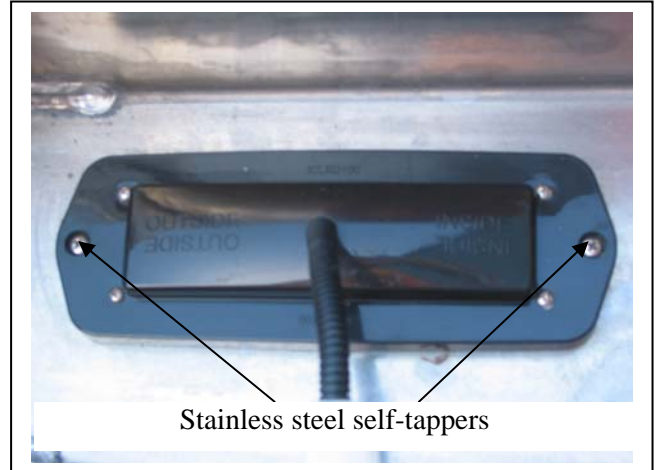
WORLD'S BEST  
ALLOY BULLBARS

29 Snook St  
Clontarf QLD 4019  
Australia

Po Box 122  
Margate QLD 4019  
Australia

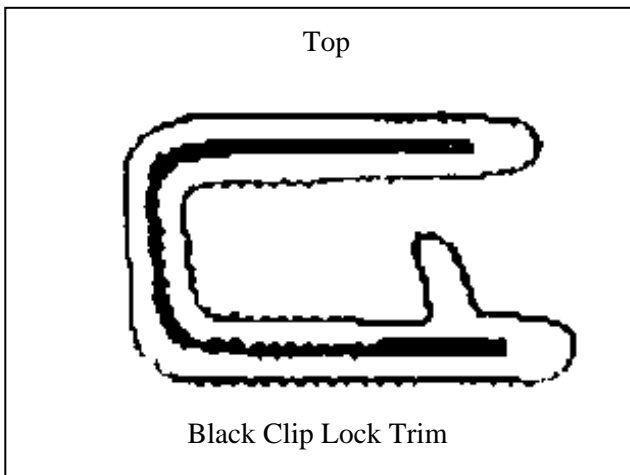


Figure 7 – Passenger side shown



Stainless steel self-tappers

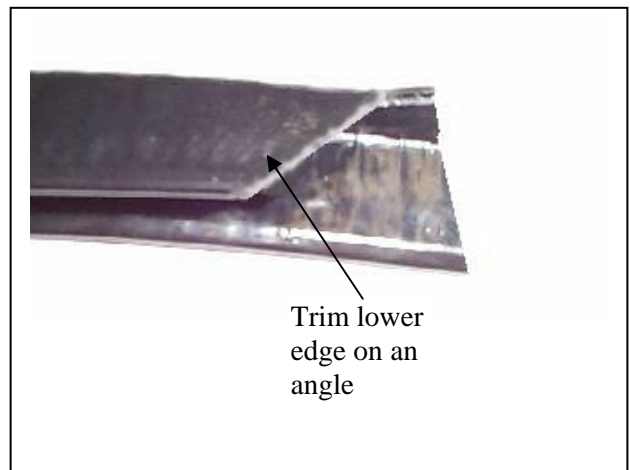
Figure 8



Top

Black Clip Lock Trim

Figure 9



Trim lower  
edge on an  
angle

Figure 10



Attach black clip lock trim

Trim level with the  
back of protection bar

Figure 11



Figure 12– Front view shown



**East Coast Bullbars (ECB Pty Ltd)**

Tel: 07 3897 5700

Fax: 07 3283 1168

ecb@ecb.com.au www.ecb.com.au

**WORLD'S BEST  
ALLOY BULLBARS**

29 Snook St  
Clontarf QLD 4019  
Australia

Po Box 122  
Margate QLD 4019  
Australia



**Figure 13**– Side view shown



**WORLD'S BEST  
ALLOY BULLBARS**

**East Coast Bullbars (ECB Pty Ltd)**

Tel: 07 3897 5700

Fax: 07 3283 1168

ecb@ecb.com.au www.ecb.com.au

29 Snook St  
Clontarf QLD 4019  
Australia

Po Box 122  
Margate QLD 4019  
Australia

**We value your comments**

Dear Fitter,

ECB would like to know how you went with the installation of this product. We value your comment and may need to contact you to clarify some details so please complete your contact details clearly.

We would appreciate if you could complete as many of the following details as possible.

<b>Your Name:</b>	<b>Your contact No.</b>
<b>Product Part No.</b>	<b>Product Invoice No.</b>
<b>Product Description:</b>	<b>Make, model, and year of vehicle:</b>
<b>Product Work Order No.</b>	<b>Company your from/Company product purchased from:</b>

**Date of Fitment:** \_\_\_\_/\_\_\_\_/\_\_\_\_

Was the fitting hardware supplied complete?

Yes

No

If no what was not supplied

\_\_\_\_\_  
\_\_\_\_\_

Did the installation go well?

Yes

No

Please provide comments

\_\_\_\_\_  
\_\_\_\_\_  
\_\_\_\_\_

Please draw diagrams if you need to.

**Post to**  
Reply Paid 122  
PO Box 122  
Margate QLD 4019

**Fax to**  
(07) 3283 1168



WORLD'S BEST  
ALLOY BULLBARS

East Coast Bullbars (ECB Pty Ltd)

Tel: 07 3897 5700

Fax: 07 3283 1168

ecb@ecb.com.au www.ecb.com.au

29 Snook St  
Clontarf QLD 4019  
Australia

Po Box 122  
Margate QLD 4019  
Australia

## DESPATCH CHECKLIST BF69SY

Work Order #	
Finish:	
Transport:	
Due Date:	

- 1 – Steel mounting bracket.
- 1 – Pair steel angle mounting brackets.
- 1 – Bolt kit.
- 1 – ECB LED Indicator / Park light kit.
- 1 – 2300mm length 6mm clip lock trim.
- 2 – ECB overrides – **Fitted to Bar**
- 6 – 6mm air scoops – **Fitted to Bar**

**See other side of  
this page for  
photos of all  
mounts**



Is this product “the best it can be” Yes \_\_\_\_\_ / \_\_\_\_\_  
Wrapper’s initials / Checker initials

If **NO** fix before continuing

All parts checked and completed by:

Nut and bolts: \_\_\_\_\_ Date \_\_/\_\_/\_\_

Order control: \_\_\_\_\_ Date \_\_/\_\_/\_\_

Final wrap check: \_\_\_\_\_ Date \_\_/\_\_/\_\_



East Coast Bullbars (ECB Pty Ltd)

Tel: 07 3897 5700

Fax: 07 3283 1168

ecb@ecb.com.au www.ecb.com.au

29 Snook St  
Clontarf QLD 4019  
Australia

Po Box 122  
Margate QLD 4019  
Australia

**WORLD'S BEST  
ALLOY BULLBARS**

