



**WORLD'S BEST  
ALLOY BULLBARS**

**East Coast Bullbars (ECB Pty Ltd)**

Tel: 07 3897 5700

Fax: 07 3283 1168

ecb@ecb.com.au www.ecb.com.au

29 Snook St  
Clontarf QLD 4019  
Australia

Po Box 122  
Margate QLD 4019  
Australia

**BF28SY**

COMMENCED: 11.05.17  
REVISED: 07.06.17

## **FITTING INSTRUCTIONS**

### **FORD F250 SUPER DUTY 1/17 ON WINCH PROTECTION BAR (suits 16.5 Ti Warn winch) VEHICLE FRONTAL PROTECTION SYSTEM (VFPS) FOR AIR BAG & ADR COMPLIANT VEHICLES**

Check installation hardware before commencing.

1. Remove plastic covers from area around tow hooks to access bolts.
2. Remove four 18mm head bumper bar bolts from front of chassis per side, **see figure 1**. Remove two 13mm head bolts from bumper stay per side at chassis rail end. Unplug fog lights if required and unplug wiring loom from left hand side chassis rail under radiator. Remove bumper.
3. Remove four 18mm head bolts from tow hook per side.
4. Remove two 18 mm head bolts from under run brackets per side.
5. Move support brace on winch to rear (if necessary for your winch). **See figure 2**.
6. Fit fairlead roller to front of ECB winch frame using bolts supplied with winch. **Finger tighten only**.
7. Install winch into ECB winch frame (supplied) using bolts supplied with winch. Attach control box mount to winch frame using two M10 x 35 bolts, flat washers, spring washers and nuts (supplied). Attach control box to mount with bolts as per instructions supplied with winch.
8. Install ECB right angle steel mount (supplied) to inside of chassis rail **finger tighten only** using two M12 x 40 bolts, flat washers, spring washers and nuts (per side) (supplied). **See figure 3**.
9. Place tow hooks into holes in winch frame as shown in **Figure 4**. Fit winch frame onto chassis rails and fix with three M12 x 40 bolts, flat washers, spring washers and nuts (supplied) on outside of winch frame per side. Fit two M12 x 40 bolts, flat washers, spring washers and nuts (per side) (supplied) into inside chassis mount holes. Use original bolts for tow hooks. **Tighten all bolts**.
10. Wire winch as per winch instructions.
11. Remove wiring harness from rear of bumper. Install harness to rear of Protection bar using Zip ties supplied. NOTE: the harness needs to run under the outer holes in the channel for tow hooks and above the centre hole for the winch cradle. **See figure 5**. Attach ECB fog lights to protection bar. Use M6 x 20 bolts and washers (supplied) with M6 nuts on wire (supplied). **TIGHTEN FIRM ONLY. See figure 5**.
12. Fit ECB LED indicator / park lights into protection bar as per instructions supplied with the LED indicator kit. **NOTE: Ensure park light is to outside. See figure 6**.
13. Splice ECB fog light wiring harness into fog light harness on vehicle using cable locks supplied. Ensure harness is clear of sharp edges and moving parts. **See figure 7**.



**WORLD'S BEST  
ALLOY BULLBARS**

**East Coast Bullbars (ECB Pty Ltd)**

Tel: 07 3897 5700

Fax: 07 3283 1168

ecb@ecb.com.au www.ecb.com.au

29 Snook St  
Clontarf QLD 4019  
Australia

Po Box 122  
Margate QLD 4019  
Australia

14. Splice ECB wiring harness into wiring harness behind headlight using cable locks (supplied). Ensure harness is clear of sharp edges and moving parts.
15. Attach 6mm clip lock trim (supplied) to top of ECB protection bar. **NOTE:** Trim off lower edge on an angle so trim will sit flush with end of protection bar. **See figures 8, 9 and 10.**
16. Fit underbelly plate to rear winch mount and chassis rail using three M6 x 25 bolts, flat washers and nyloc nuts and two M10 x 35 bolts on 200mm wire, flat washers, spring washers and nuts. **See figure 11.**
17. Fit protection bar onto winch frame using three M12 x 40 bolts, flat washers, spring washers and nuts per side (supplied). Align protection bar to front of vehicle and tighten bolts. Align fairlead roller and tighten bolts. **See figures 12 and 13.**
18. Connect indicator/ park and fog lights and check for correct operation.

#### **ENSURE NUMBER PLATE IS CLEARLY VISABLE**

**Note:** When fitting/refitting the licence plate to the vehicle, ensure there is no obstruction to licence plate vision in accordance with local authorities. If required relocate licence plate to an alternate location.

#### **Further VFPS Notes:**

- a) Do not attach VFPS to the vehicle using anchorages not intended for this purpose (e.g. engine mounting bolts).
- b) Do not use this product for any vehicle make or model, other than those specified by the VFPS manufacturer.
- c) Do not remove the plaque or label from the VFPS.
- d) Do not modify the structure of the VFPS in any way.
- e) No accessory or fitment should project forward of the VFPS forward profile.
- f) **ENSURE THESE INSTRUCTIONS ARE LEFT WITH VEHICLE OWNER AND/OR OPERATOR.**

#### **IMPORTANT INFORMATION**

Periodically check bolts and nuts for correct tightness, especially if travelling on rough roads

#### **FITTING KIT**

|  |  |
|--|--|
| 1 – Steel Winch frame                              | 2 – M6 x 20 bolts                                    |
| 1 – Pair Steel support mounts                      | 3 – M6 x 25 bolts                                    |
| 1 – Control box mount                              | 6 – M6 flat washers                                  |
| 1 – Underbelly plate                               | 2 – M6 spring washers                                |
| 20 – M12 x 1.75 x 40 Bolts                         | 3 – M6 nyloc nuts                                    |
| 40 – M12 Flat washers                              | 2 – M6 nuts  |
| 20 – M12 Spring washers                            | 1 – ECB LED Indicator / Park light kit (ICLED104ECB) |
| 20 – M12 x 1.75 Nuts                               | 10 – Cable locks                                     |
| 4 – M10 x 1.5 x 35 Bolts                           | 1 – ECB Fog light kit                                |
| 2 – M10 x 1.5 x 35 bolts and washers on 300mm wire | 4 – Fog light surrounds                              |
| 10 – M10 Flat washers                              | 1 – Length 6mm clip lock trim 2500 long              |
| 6 – M10 Spring washers                             | 1 – Length 6mm clip lock trim 650 long               |
| 6 – M10 x 1.5 nuts                                 | 10 – 300mm Zip ties                                  |



East Coast Bullbars (ECB Pty Ltd)

Tel: 07 3897 5700

Fax: 07 3283 1168

ecb@ecb.com.au www.ecb.com.au

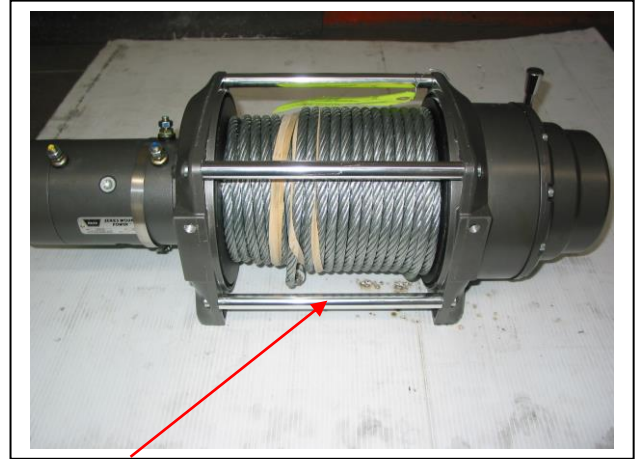
WORLD'S BEST  
ALLOY BULLBARS

29 Snook St  
Clontarf QLD 4019  
Australia

Po Box 122  
Margate QLD 4019  
Australia



Figure 1: Remove four 18mm head bolts per side.



Refit to rear of winch

Figure 2

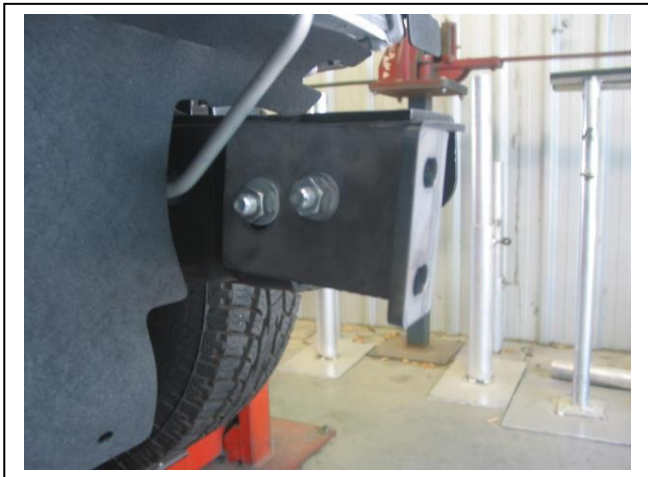


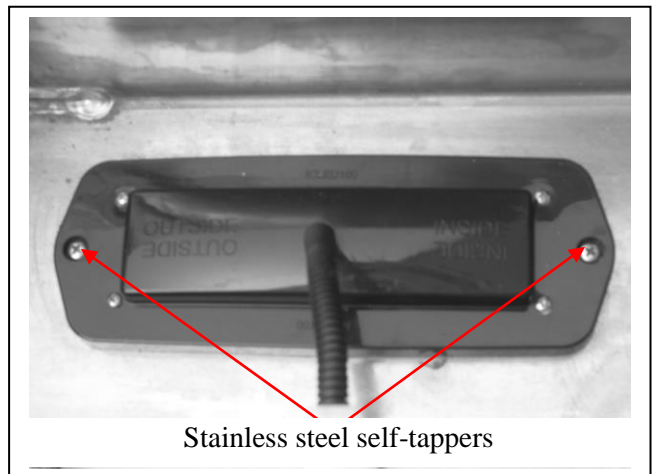
Figure 3:



Figure 4:



Figure 5: Note wiring on top at winch hole and under on tow point holes



Stainless steel self-tappers

Figure 6



East Coast Bullbars (ECB Pty Ltd)

Tel: 07 3897 5700

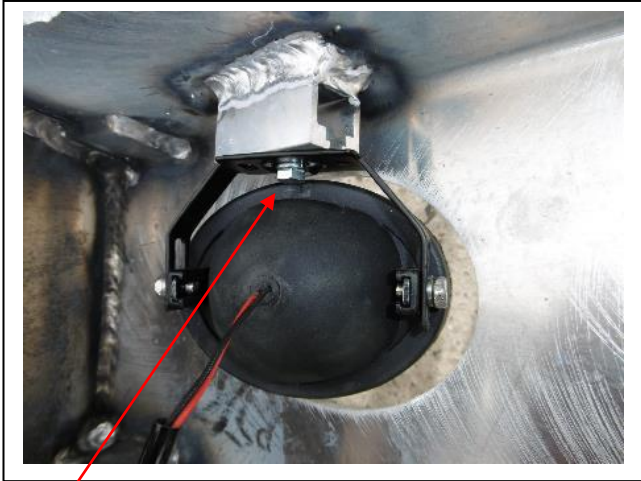
Fax: 07 3283 1168

ecb@ecb.com.au www.ecb.com.au

29 Snook St  
Clontarf QLD 4019  
Australia

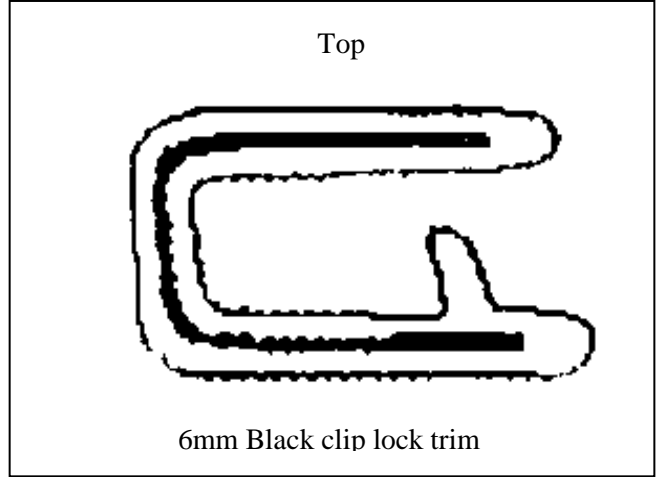
Po Box 122  
Margate QLD 4019  
Australia

WORLD'S BEST  
ALLOY BULLBARS



M6 Bolt

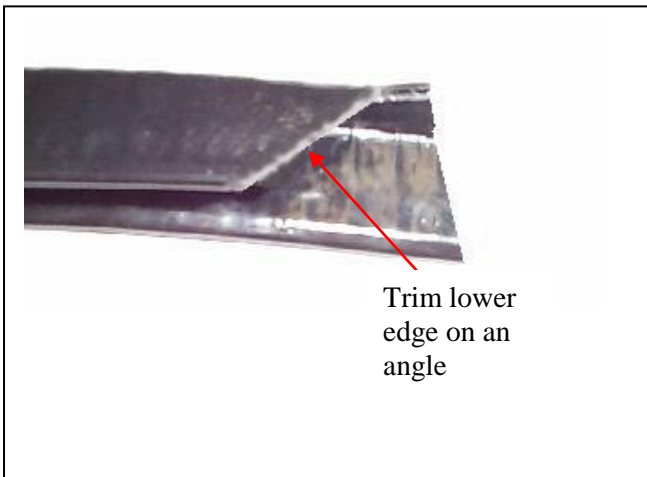
Figure 7:



Top

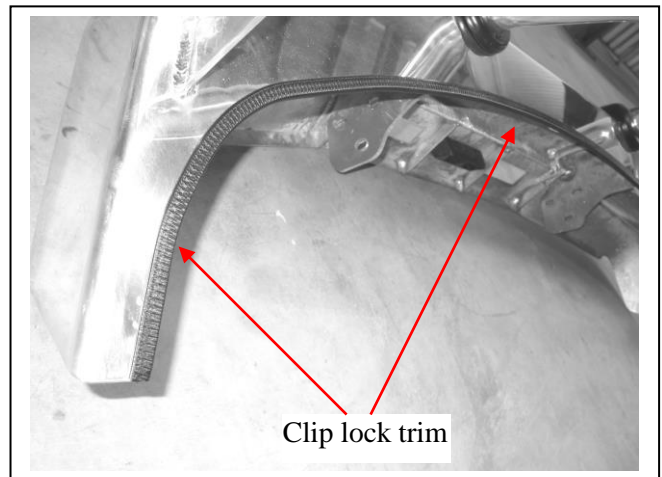
6mm Black clip lock trim

Figure 8:



Trim lower  
edge on an  
angle

Figure 9



Clip lock trim

Figure 10



Figure 11: underbelly plate



Figure 12: Front view





**WORLD'S BEST  
ALLOY BULLBARS**

**East Coast Bullbars (ECB Pty Ltd)**

Tel: 07 3897 5700

Fax: 07 3283 1168

ecb@ecb.com.au www.ecb.com.au

29 Snook St  
Clontarf QLD 4019  
Australia

Po Box 122  
Margate QLD 4019  
Australia



**Figure 13: Side view**





WORLD'S BEST  
ALLOY BULLBARS

East Coast Bullbars (ECB Pty Ltd)

Tel: 07 3897 5700

Fax: 07 3283 1168

ecb@ecb.com.au www.ecb.com.au

29 Snook St  
Clontarf QLD 4019  
Australia

Po Box 122  
Margate QLD 4019  
Australia

## DESPATCH CHECKLIST BF28SY

|              |  |   |
|--------------|--|---|
| Work Order # |  | <b>See other side of<br/>this page for<br/>photos of all<br/>mounts</b> |
| Finish:      |  |   |
| Transport:   |  |   |
| Due Date:    |  |   |

OC.....1 – Pair Steel support brackets.

OC.....1 – Winch frame.

OC.....1 – Control box mount.

OC.....1 – underbelly plate

BK.....1 – Bolt kit.

BK.....1 – ECB LED indicator / park light kit. (ICLED104ECB)

BK.....1 – ECB fog light kit

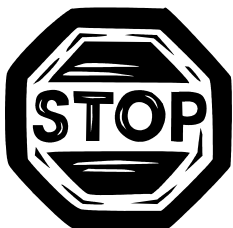
BK.....4 – Fog light surrounds

BK.....1 – Length 6mm clip lock 2500mm long.

BK.....1 – Length 6mm clip lock 650mm long.

OC.....2 – ECB Overrides – **Fitted to Bar**

OC.....8 – 6mm Air Vents – **Fitted to Bar. Trim centre air vents next to winch cut out parallel to front, to 13mm depth.**



Is this product “the best it can be” Yes  
If NO fix before continuing

\_\_\_\_\_/\_\_\_\_\_  
Wrapper's initials / Checker initials

All parts checked and completed by:

Nut and bolts: \_\_\_\_\_ Date \_\_/\_\_/\_\_

Order control: \_\_\_\_\_ Date \_\_/\_\_/\_\_

Final wrap check: \_\_\_\_\_ Date \_\_/\_\_/\_\_



East Coast Bullbars (ECB Pty Ltd)

Tel: 07 3897 5700

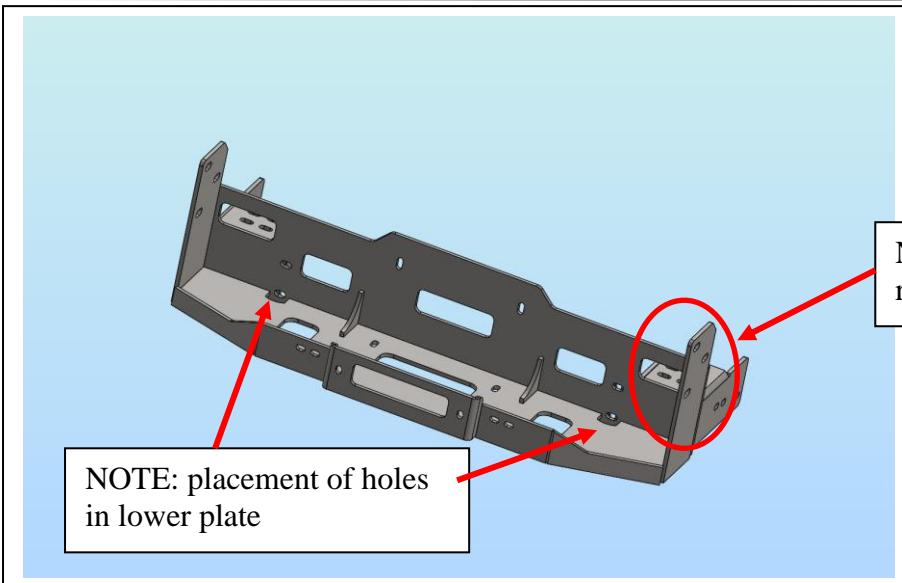
Fax: 07 3283 1168

ecb@ecb.com.au www.ecb.com.au

WORLD'S BEST  
ALLOY BULLBARS

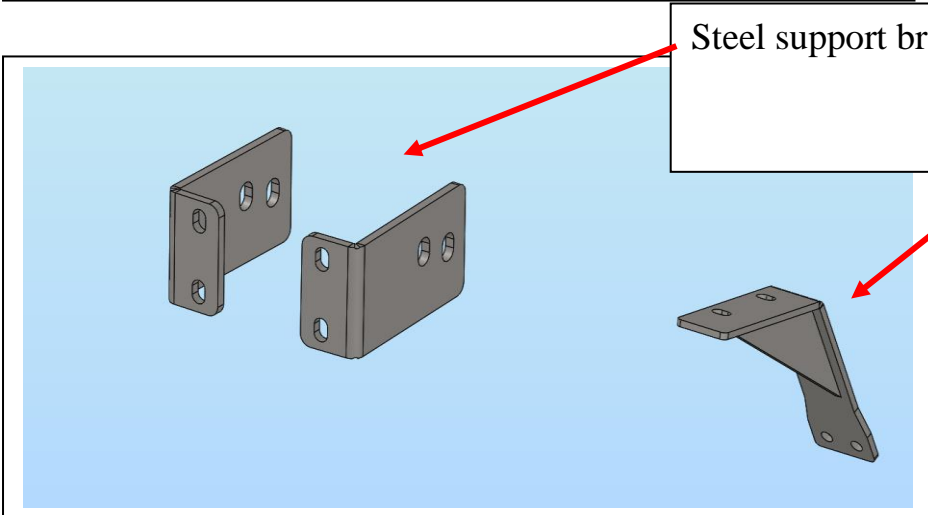
29 Snook St  
Clontarf QLD 4019  
Australia

Po Box 122  
Margate QLD 4019  
Australia

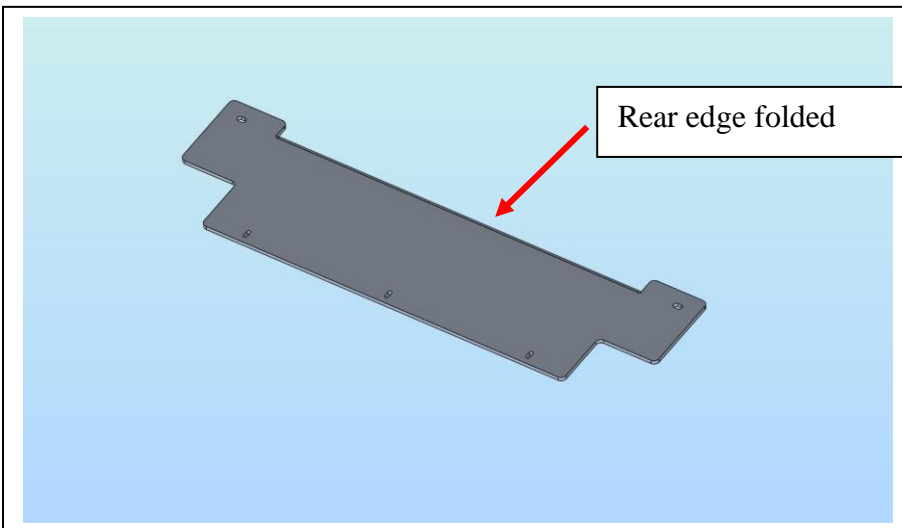


NOTE: placement of holes  
in lower plate

NOTE: four bolt holes to  
rear of frame



Steel support brackets (1 Pair)  
Control Box Mount



Rear edge folded

\_\_\_\_\_  
Wrapper's initials / Checker initials