



**WORLD'S BEST
ALLOY BULLBARS**

East Coast Bullbars (ECB Pty Ltd)

Tel: 07 3897 5700

Fax: 07 3283 1168

ecb@ecb.com.au www.ecb.com.au

29 Snook St
Clontarf QLD 4019
Australia

Po Box 122
Margate QLD 4019
Australia

BF27SY

REPLACES: 00.00.00

REVISED: 15.12.14

FITTING INSTRUCTIONS

FORD F250 SUPER DUTY 7/14 ON WINCH PROTECTION BAR (suits 16.5 Ti Warn winch) VEHICLE FRONTAL PROTECTION SYSTEM (VFPS) FOR AIR BAG & ADR COMPLIANT VEHICLES

Check installation hardware before commencing.

1. Remove two 18mm head bumper bar bolts from front of chassis per side, **see figure 1**. Remove two 13mm head bolts from bumper stay per side. Unplug fog lights if required and unplug wiring loom from driver's side chassis rail under radiator. Remove three Christmas tree plugs and soft rubber infill from rear of bumper, remove bumper.
2. Remove three 18mm head bolts from tow hook per side.
3. Remove four 18 mm head nuts from under run brackets per side.
4. Move support brace on winch to rear (if necessary for your winch). **See figure 2**.
5. Install winch into ECB winch frame (supplied) using bolts supplied with winch. Attach control box mount to winch frame using two M10 x 35 bolts, flat washers, spring washers and nuts (supplied). Attach control box to mount with bolts as per instructions supplied with winch.
5. Fit fairlead roller to front of ECB winch frame using bolts supplied with winch. **Finger tight only**.
6. Install ECB right angle steel mount to inside of chassis rail **finger tight only** using two M12 x 40 bolts on left side and two M12 x 50 bolts on right side (side with oil cooler), flat washers, spring washers and nuts (supplied). **See figure 3**.
7. Place tow hooks into holes in winch frame as shown in **Figure 4**. Fit winch frame onto chassis rails and fix with three M12 x 40 bolts, flat washers, spring washers and nuts on outside of winch frame per side, use 40 x 40 x 6 washer on inside of chassis rail in outer rear hole (supplied) **See figure 5**. Fit two M12 x 40 bolts, flat washers, spring washers and nuts per side into inside chassis mount holes. Use original bolts for tow hooks. **Tighten all bolts**. Install Christmas tree clips and soft rubber infill to underside rear of winch frame.
8. Wire winch as per winch instructions.
9. Fit ECB LED indicator / park lights into protection bar as per instructions supplied with the LED indicator kit. **NOTE: Ensure park light is to outside. See figure 6**.
10. Attach ECB fog lights to protection bar. Place M6 x 20 bolts, spring washers (supplied) through light mount from inside and attach nut to top. Slide assembly into light mount in Protection bar and centralize light to hole. **TIGHTEN FIRM ONLY. See figure. 7**.
11. Splice ECB fog light wiring harness into fog light harness on vehicle using cable locks supplied. Ensure harness is clear of sharp edges and moving parts.



**WORLD'S BEST
ALLOY BULLBARS**

East Coast Bullbars (ECB Pty Ltd)

Tel: 07 3897 5700

Fax: 07 3283 1168

ecb@ecb.com.au www.ecb.com.au

29 Snook St
Clontarf QLD 4019
Australia

Po Box 122
Margate QLD 4019
Australia

12. Splice ECB wiring harness into wiring harness behind headlight using cable locks (supplied). Ensure harness is clear of sharp edges and moving parts.
13. Attach 6mm clip lock trim (supplied) to top of ECB protection bar. **NOTE:** Trim off lower edge on an angle so trim will sit flush with end of protection bar. **See figures 8, 9 and 10.**
14. Fit oil cooler deflector on driver's side chassis rail. **See figure 11.**
15. Fit protection bar onto winch frame using three M12 x 40 bolts, flat washers, spring washers and nuts per side (supplied). Align protection bar to front of vehicle and tighten bolts. Align fairlead roller and tighten bolts. **See figure 12 and 13.**

ENSURE NUMBER PLATE IS CLEARLY VISABLE

Note: When fitting/refitting the licence plate to the vehicle, ensure there is no obstruction to licence plate vision in accordance with local authorities. If required relocate licence plate to an alternate location.

Further VFPS Notes:

- a) Do not attach VFPS to the vehicle using anchorages not intended for this purpose (e.g. engine mounting bolts).
- b) Do not use this product for any vehicle make or model, other than those specified by the VFPS manufacturer.
- c) Do not remove the plaque or label from the VFPS.
- d) Do not modify the structure of the VFPS in any way.
- e) No accessory or fitment should project forward of the VFPS forward profile.
- f) **ENSURE THESE INSTRUCTIONS ARE LEFT WITH VEHICLE OWNER AND/OR OPERATOR.**

IMPORTANT INFORMATION

Periodically check bolts and nuts for correct tightness, especially if travelling on rough roads

FITTING KIT

1 – Winch frame	2 – M10 Spring washers
2 – Steel mounts	2 – M10 x 1.5 nuts
1 – Oil cooler deflector	2 – M6 x 20 bolts
1 – Control box mount	2 – M6 spring washers
2 – 40 x 40 x 6 steel washer	2 – M6 nuts
2 – M12 x 1.75 x 50 Bolts	1 – ECB LED Indicator / Park light kit
18 – M12 x 1.75 x 40 Bolts	10 – Cable locks
40 – M12 Flat washers	1 – ECB Fog light kit
20 – M12 Spring washers	4 – fog light surrounds
20 – M12 x 1.75 Nuts	1 – Length 6mm clip lock 2500 long
2 – M10 x 1.5 x 35 Bolts	1 – Length 6mm clip lock 650 long
4 – M10 Flat washers	2 – Length 6mm clip lock 300 long



East Coast Bullbars (ECB Pty Ltd)

Tel: 07 3897 5700

Fax: 07 3283 1168

ecb@ecb.com.au www.ecb.com.au

WORLD'S BEST
ALLOY BULLBARS

29 Snook St
Clontarf QLD 4019
Australia

Po Box 122
Margate QLD 4019
Australia

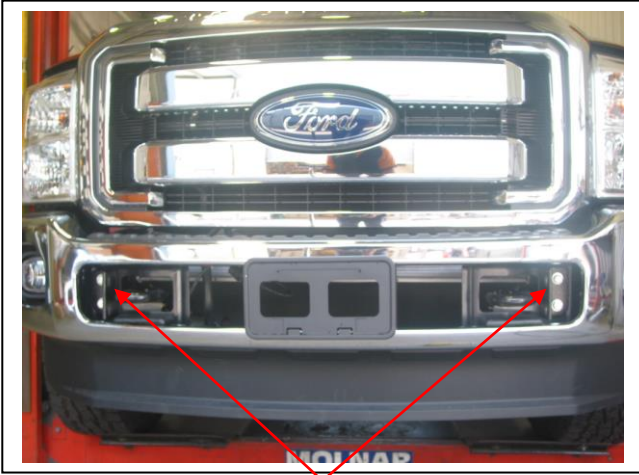
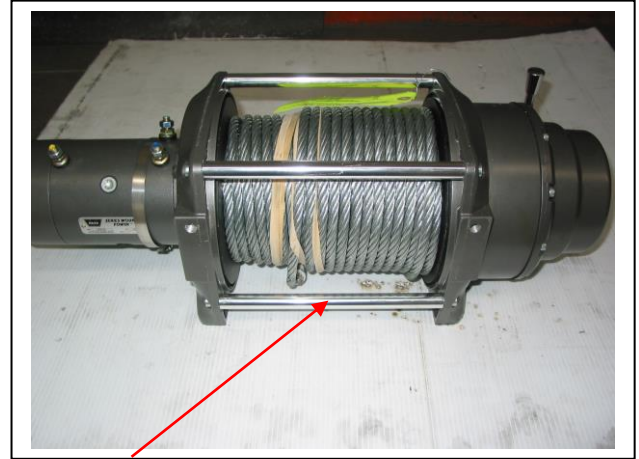


Figure 1: Remove two 18mm head bolts per side.



Refit to rear of
winch

Figure 2

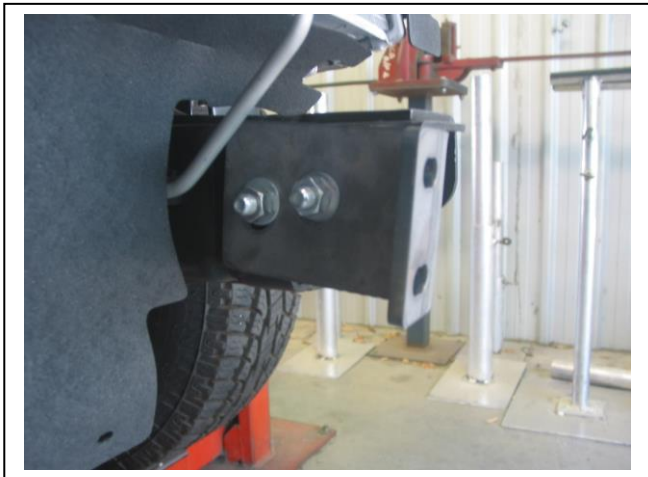


Figure 3:

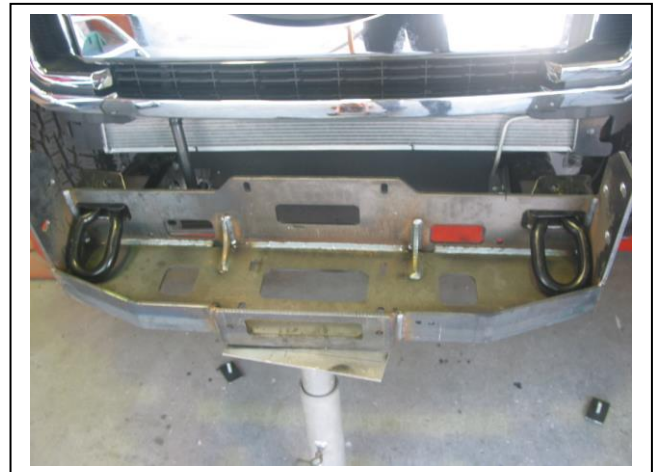


Figure 4:

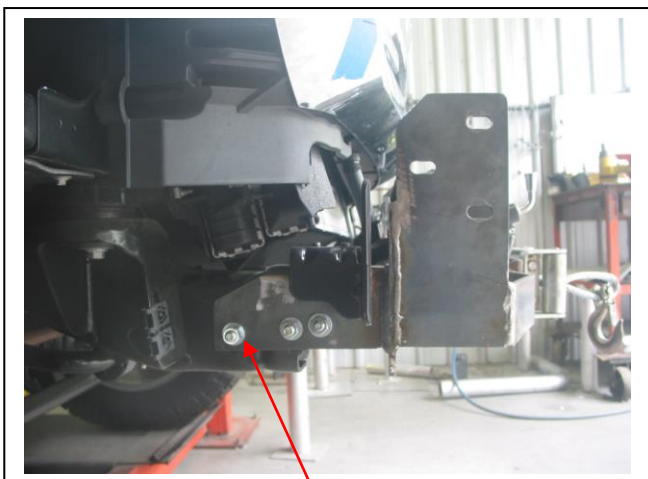
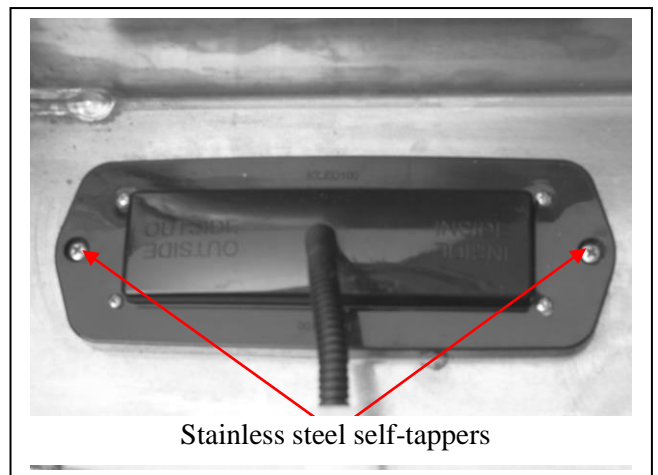


Figure 5: Use washer in this hole.



Stainless steel self-tappers

Figure 6



East Coast Bullbars (ECB Pty Ltd)

Tel: 07 3897 5700

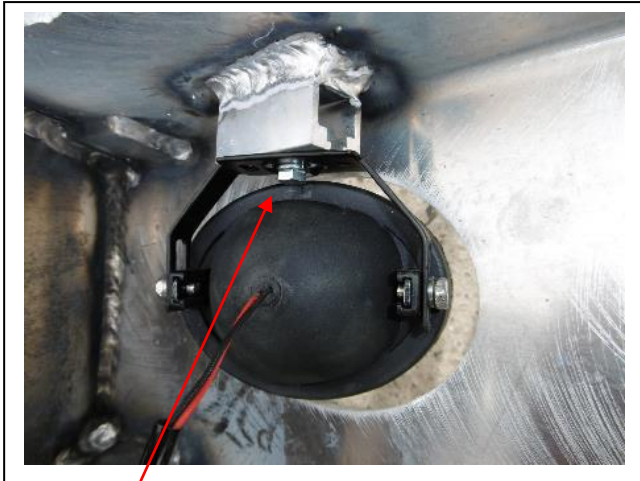
Fax: 07 3283 1168

ecb@ecb.com.au www.ecb.com.au

29 Snook St
Clontarf QLD 4019
Australia

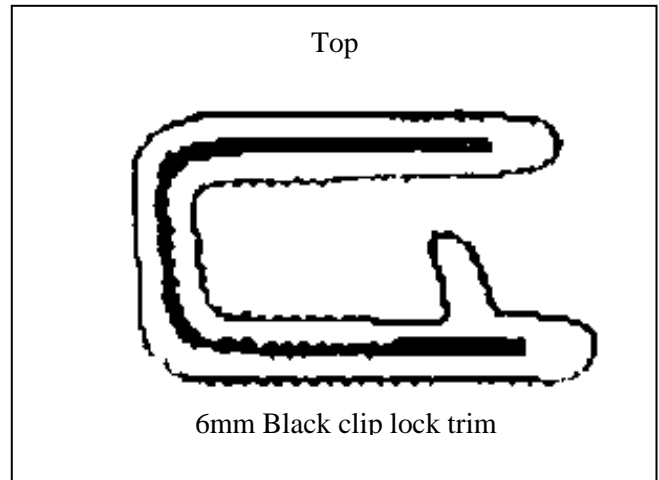
Po Box 122
Margate QLD 4019
Australia

WORLD'S BEST
ALLOY BULLBARS



M6 bolt

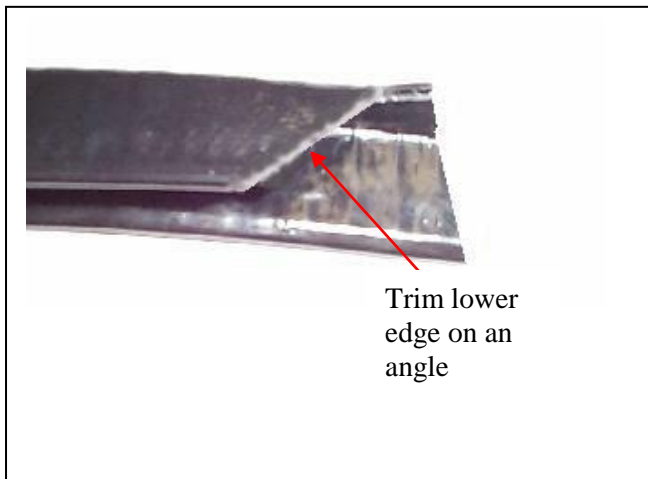
Figure 7:



Top

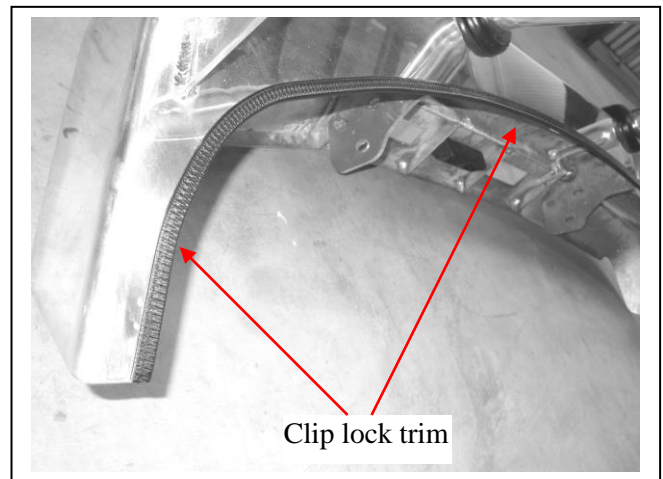
6mm Black clip lock trim

Figure 8:



Trim lower
edge on an
angle

Figure 9



Clip lock trim

Figure 10



Figure 11: Oil cooler deflector



Figure 12: Front view



**WORLD'S BEST
ALLOY BULLBARS**

East Coast Bullbars (ECB Pty Ltd)

Tel: 07 3897 5700

Fax: 07 3283 1168

ecb@ecb.com.au www.ecb.com.au

29 Snook St
Clontarf QLD 4019
Australia

Po Box 122
Margate QLD 4019
Australia



Figure 13: Side view



**WORLD'S BEST
ALLOY BULLBARS**

East Coast Bullbars (ECB Pty Ltd)

Tel: 07 3897 5700

Fax: 07 3283 1168

ecb@ecb.com.au www.ecb.com.au

29 Snook St
Clontarf QLD 4019
Australia

Po Box 122
Margate QLD 4019
Australia

We value your comments

Dear Fitter,

ECB would like to know how you went with the installation of this product. We value your comment and may need to contact you to clarify some details so please complete your contact details clearly.

We would appreciate if you could complete as many of the following details as possible.

Your Name:	Your contact No.
Product Part No.	Product Invoice No.
Product Description:	Make, model, and year of vehicle:
Product Work Order No.	Company your from/Company product purchased from:

Date of Fitment: ____/____/____

Was the fitting hardware supplied complete?

Yes

No

If no what was not supplied

Did the installation go well?

Yes

No

Please provide comments

Please draw diagrams if you need to.

Post to
Reply Paid 122
PO Box 122
Margate QLD 4019

Fax to
(07) 3283 1168



WORLD'S BEST
ALLOY BULLBARS

East Coast Bullbars (ECB Pty Ltd)

Tel: 07 3897 5700

Fax: 07 3283 1168

ecb@ecb.com.au www.ecb.com.au

29 Snook St
Clontarf QLD 4019
Australia

Po Box 122
Margate QLD 4019
Australia

DESPATCH CHECKLIST BF27SY

Work Order #		See other side of this page for photos of all mounts
Finish:		
Transport:		
Due Date:		

- OC.....2 – Steel mounting brackets.
- OC.....1 – Winch frame.
- OC.....1 – Control box mount.
- OC.....1 – Oil Cooler Deflector
- BK.....1 – Bolt kit.
- BK.....1 – ECB LED indicator / park light kit.
- BK.....1 – ECB fog light kit
- BK.....4 – Fog light surrounds
- BK.....1 – Length 6mm clip lock 2500mm long.
- BK.....1 – Length 6mm clip lock 650mm long.
- BK.....2 – Length 6mm clip lock 300 mm long
- OC.....2 – ECB Overrides – **Fitted to Bar**
- OC.....6 – 6mm Air Vents – **Fitted to Bar**



Is this product “the best it can be” Yes
If **NO** fix before continuing

_____/_____
Wrapper's initials / Checker initials

All parts checked and completed by:

Nut and bolts: _____ Date __/__/__

Order control: _____ Date __/__/__

Final wrap check: _____ Date __/__/__



East Coast Bullbars (ECB Pty Ltd)

Tel: 07 3897 5700

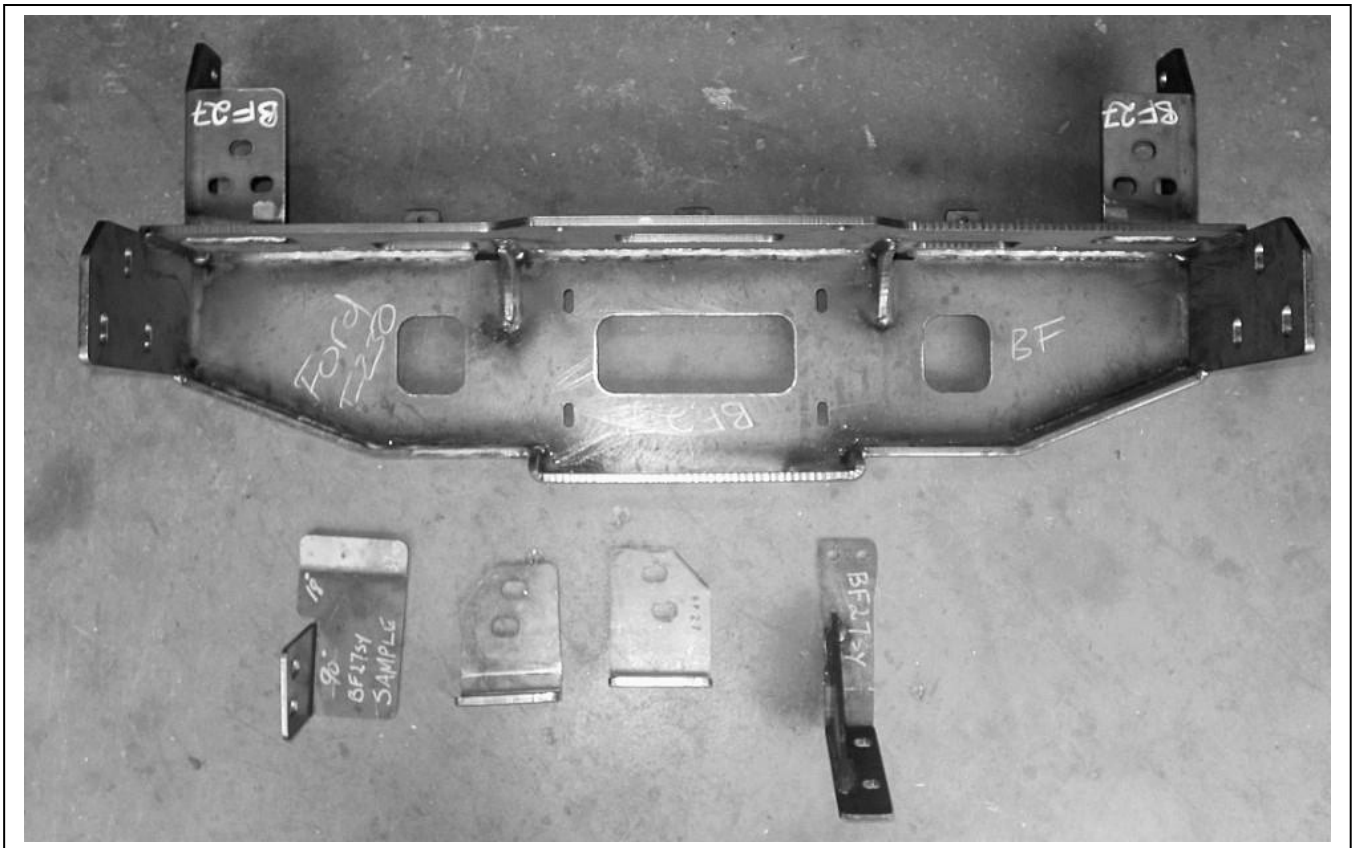
Fax: 07 3283 1168

ecb@ecb.com.au www.ecb.com.au

29 Snook St
Clontarf QLD 4019
Australia

Po Box 122
Margate QLD 4019
Australia

WORLD'S BEST
ALLOY BULLBARS



_____/_____
Wrapper's initials / Checker initials